

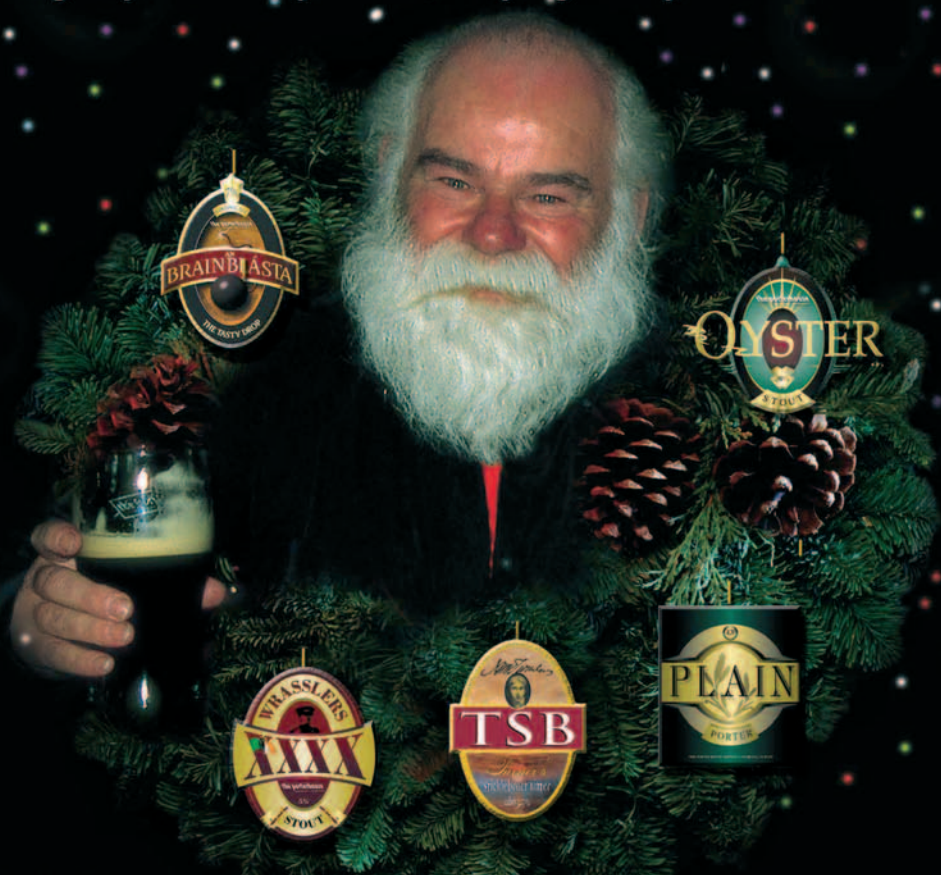


**CAMPAIGN  
FOR  
REAL ALE**



The Coach & Horses, Barnes. See page 11.

Enjoyed by many jolly ol' souls\*.



# Merry Christmas

from all at...

\* By the way this isn't Santa, it's Dardis, a distinguished Wrassler XXXX drinker who happens to be a jolly ol' soul.



Ireland's  
Largest Genuine Irish Brewery

The Porterhouse, Maiden Lane, Covent Garden WC2 E7NA  
tel. 020 7379 7917 fax 020 7379 7991

[www.porterhousebrewco.com](http://www.porterhousebrewco.com)



## EDITORIAL

### GASTRO PUBS ARE A FAD

**P**ick up any trade publication and you would be forgiven for thinking that the introduction of food to public houses is the solution to trading woes and the core ingredient to the business plan of many a new public house.

Indeed, ever since the very first notable gastro pub, the Eagle at Farringdon, many operators have followed suit and it's now commonplace in London for restaurant quality food to be served up in informal public house surroundings. The public house and restaurant definitions are increasingly blurred and this has been welcomed by the ever discerning consumer.

Today, particularly in London, there is a vast array of gastro pub operations – in excess of 60 around London alone at my last count. At first glance, these are fabulous operations; strong investment generally means that the premises are well presented both externally and internally, often with a theatre style kitchen in full view of diners. The operations are busy, in particular, just when you want to convene with friends for an evening's cheer; it's a relaxed and informal experience being catered for by true professionals and at value for money prices. Without question, there are some fabulous operations with some truly superb offerings for drinkers and diners alike. So much for the general perception.

The operator on the other hand sees things in a different light altogether. Indeed, we have identified a growing trend amongst London gastro pub operators, where the operator over capitalises at the start of his tenure, either by way of payment of a premium or by way of fit out/refurbishment. This is often coupled with high wage/running costs that are associated with operations of this nature. Consequently, there is insufficient return for the operator on the all important bottom line, in spite of strong levels of turnover and good gross profits at the top half of the P&L. This cycle then leads to the operator telephoning Fleurets to consider their options only to experience frustration at why, in spite of much acclaim, award or review in the press, their most likely outcome on sale will mean that they realise less than their initial investment, resulting in the whole experience being viewed as a financial failure.

Some operate tied leases and others free of tie leases. Even established gastro operators that run businesses perceived as being successful are disappointed with the insufficient return on their investment and consequently many will think twice before embarking on similar enterprises in future.

Whilst it is a cliché, the phrase “turnover for vanity, profit for sanity” is appropriate here. From a property perspective, what this boils down to is, once again, the profits method of valuation.

In essence, gastro operations (or indeed any public house operation)

*Views expressed in this publication are those of their individual authors and are not necessarily endorsed by the Editor or the Campaign for Real Ale Limited.*

*London Drinker is published by Mike Hammersley on behalf of the London Branches of CAMRA, the Campaign for Real Ale Limited, and edited by Geoff Strawbridge.*

*Material for publication should preferably be sent by e-mail to [geoff@coherent-tech.co.uk](mailto:geoff@coherent-tech.co.uk).*

*Press releases and letters by post should be sent to Tony Hedger, 7 The Square, Peabody Estate, Fulham Palace Road, London W6 9PX*

*Changes to pubs or beers should be reported to Capital Pubcheck, 2 Sandtoft Road, London SE7 7LR or by e-mail to [capitalpubcheck@hotmail.com](mailto:capitalpubcheck@hotmail.com).*

*For publication in February 2006, please send electronic documents to the Editor no later than Wednesday 11th January.*

*SUBSCRIPTIONS: £3.00 for mailing of 6 editions should be sent to Stan Tompkins, 52 Rabbs Mill House, Chiltem View Road, Uxbridge, Middlesex, UB8 2PD (cheques payable to CAMRA London).*

*ADVERTISING: Peter Tonge: Tel: 020-8300 7693.*

*Printed by Cliffe Enterprise, Lewes, East Sussex BN7 2RJ*

## IN THIS ISSUE

Binge drinking	5
News round-up	10
London Pubs Group	18
Letters	20
Branch Diary	24
Capital Pubcheck	27
Membership form	29
Cask Marque	33
London for free	34
Pubs in SE23	39
Readership survey	41
Idle Moments	44
Crossword	46

# De Olde Mitre

Ely Court, between Ely Place  
and Hatton Garden,  
London EC1N 6SJ  
020 7405 4751

**Historic and traditional Ale-House**  
**CAMRA Listed • Cask Marque Award**

***Merry Christmas and  
a Happy New Year  
to all our Customers  
old and new***

**Adnams Bitter and Broadside  
and Deuchars IPA always available**

**Open 11-11pm Monday to Friday  
(try our famous toasties)**

**Nearest tubes: Chancery Lane/Farringdon**

## EDITORIAL

showing a marginal or small profit are only likely to sell for a nominal/small premium and often this figure is *less* than the initial capital investment. Consequently, our advice to gastro pub operators who are considering a sale is often difficult to comprehend.

The market is ever growing in sophistication and, ultimately, this will be commonly understood by vendor and purchaser, newcomer and experienced operator alike.

In time, I envisage the less profitable gastro pubs will adapt, once again, to a more profitable format and a new phase in the evolution of the public house will unfold.

*Yaser Martini*

Director, Fleurets Chartered Surveyors



**The London Drinker team would like to  
wish our readers, our contributors and our  
advertisers a Merry Christmas and a  
Happy New Year. Drink safely, everyone,  
and don't drive.**



# Hemingford Arms

158 Hemingford Road, London N1 1DF

Tel: 020 7607 3303

Email: [enquiries@hemingfordarms.com](mailto:enquiries@hemingfordarms.com)



*The Hemingford Arms. You can't miss this for the stunning floral displays that Una shows off here. Inside is no less impressive with a fine array of traditional ales and food and a friendly service, second to none. All this goes to making the Hemingford one of London's best free houses. The locals will be up in arms that we've told you!*

## A GOLDEN OPPORTUNITY: AWAITING OR A WASTING?

*“Binge” drinking, particularly among the young, has become a matter of public concern. So far, the response of Government to the problem has been piecemeal and ineffective. Here, Brian Sheridan argues that the current interest in binge drinking offers an opportunity for us to formulate a coherent strategy for Government which will protect CAMRA’s interests and further its objectives. However, he sounds a warning: the window of opportunity may not stay open long and we need to act quickly.*

Let me first stress that I am using the term “binge drinking” in a narrow sense - confining it to the antisocial methods of imbibing alcohol currently prevalent among young people. I am aware that there are those who think that binge drinking is not a matter of concern for CAMRA. Presumably they are not concerned about the city centres in which it is no longer safe to go out for a quiet pint or three because of the gangs of feral youths roaming around spewing or urinating in the streets or starting fights at the slightest excuse. Presumably they are not concerned about the number of good city centre pubs either changed by their owners into sordid kiddie bars or even closed altogether because of a decline in trade. Presumably they are not concerned that some of the measures known to be under consideration would hit responsible drinkers, responsible publicans, or both. And presumably they are not even aware that CAMRA’s stated policy is to be against irresponsible drinking!

So far, the response from Government has suggested either that they do not have a coherent strategy to tackle the social and health problems caused by binge drinking; or that they have not yet faced the fact that a working solution is likely to arouse the ire of “big alcohol” - the mega brewers and alcopop merchants who are happy to see young people drinking themselves to oblivion and early death as long as their drinks of choice are nasty adulterated beers and ciders and overpriced spirit plus mixer concoctions. In the absence of a coherent strategy to deal with the problem, we are treated to a series of piecemeal measures, the latest of which - trailed in the press as I write - is to ban alcohol on buses and trains. (Wow!)

The opportunity is thus there for CAMRA to exploit. What we have to do is to put together a “joined up” policy comprising a package of measures which, taken together, will stand a genuine chance of improving matters and yet should forestall the implementation of measures (such as increased taxation) which will do little if anything to alleviate the problem and will penalise the innocent along with the guilty. Once the policy is developed, we should then discuss it with other bodies who are concerned about the problem in the hope that a jointly supported strategy can be put to Government and be taken seriously. I do not pretend that this will be simple, but I nonetheless believe it is possible. Of course it requires a concerted effort from an

appropriately constituted group of individuals who are committed to seeing the project through and not to looking for reasons to procrastinate on minor points of detail. The silly bits of the process can never be avoided but they should be left until later.

So what should this policy contain? I suggest that the following general areas need to be looked at, but I do not claim that the list is exhaustive and, if anyone feels there is something to add to the list, then please write to the Editor.

◆ *the role of the licensing system:* Now that responsibility for licensing is devolved to Local Authorities, we can point to ways in which they can tackle the problem, for example by refusing or revoking licences or by imposing conditions on them (e.g. on whether music will be allowed or on the layout of premises or on permitted numbers). Existing powers may be adequate, but we should consider whether all that is needed is the will to use them or whether additional ones are needed.

◆ *Opening hours:* Although CAMRA favours the principle of 24 hour opening, we should accept that the privilege to open premises whenever the licensee wishes must continue to be subject to restriction in individual cases, and actively promote this principle as part of our stated strategy. The idea that continental style drinking hours will lead to continental style drinking habits is laughable: the problem in the UK is primarily due to the prevailing culture of drinking, not to 11pm closing.

◆ *Taxation:* We need to spell out why increasing taxation is unlikely to work and will bring unwelcome effects such as increased smuggling (with the problems this will cause UK based producers) and will penalise, for example, those on lower incomes whose few affordable pleasures include a pint with friends at their local. There is surely plenty of evidence to show that, in comparisons with other countries, there is next to no correlation between the availability of cheap alcohol and antisocial drinking, and we should marshal that evidence in our arguments.

◆ *The role of mass media advertising and sponsorship:* The idea of a ban on the mass media advertising of alcohol rarely gets a mention among measures which could be taken against binge drinking, yet I believe it is central. Despite the efforts of the Portman Group (big alcohol’s fig leaf organisation) to convince us that “responsible” mass

# WHAT'LL IT BE THEN?

A PINT OF THE USUAL, OR A  
LIFE-CHANGING EXPERIENCE?

Allow us to introduce you to an old friend. Fuller's ESB, three times Champion Beer of Britain, seen here in its smart new livery. Don't worry, the beer's just the same as ever. But if it's been a while, maybe it's time you reacquainted yourself with its uniquely rich, deliciously fruity flavour and long, satisfying finish. It could well be the happiest reunion of your life.



ESB. THE CHAMPION ALE.

advertising is possible, it remains a fact that nearly all mass advertising is designed to brainwash impressionable youth into drinking whatever junk products are being promoted. Moreover, if the adverts for Carlsberg Lager, Tetley Bitter, WKD or Bacardi are examples of “responsible” advertising, then God preserve us from “irresponsible” advertising. Yes, I appreciate that we do not want to bring about a regime where local brewers cannot promote their products in the local press, on the sides of buses or on poster sites but a ban on TV advertising, national press advertising and major sponsorship need not create this problem. Indeed if CAMRA does not attempt to show that there is a difference between, on the one hand, advertising designed to brainwash and sponsorship designed to associate alcohol with sporting success and, on the other, advertising designed simply to inform, then there is a danger that measures will one day be implemented (if not by the UK then by the EU) which will stifle both. Incidentally, CAMRA also favours a ban on mass media advertising because of the way in which it distorts competition in the market in favour of the big national and international companies, so there is a lovely double whammy for us here which it would be a betrayal of all CAMRA stands for to ignore.

◆ *The criminal justice system and the role of the police:* We should consider whether there are any ways in which the system can be changed in order to tackle the problem. I am not proposing anything specific here (although I rather like the idea of “drunk tanks”) but this is an area which must be looked at as part of the development of a coherent policy and, if ideas are forthcoming, then they should be looked at with a view to inclusion.

◆ *Education:* It may be contentious to suggest it but the UK needs to develop ways for the education system to promote the concepts of responsible drinking and drinking for enjoyment as opposed to drinking for oblivion. It won’t be easy, as the anti-alcohol lobby will scream blue murder. (These people are likely to be of similar mind set to those who object to sex education and advice on contraception on the grounds that they will encourage promiscuity; then bemoan the high incidence of teenage pregnancy.) Yet just as the young will always want to explore sex, they will also want to explore alcohol, so it makes sense at least to try to offer guidance.

I suggest that the development of a policy on the lines I have set out can lead to a rational, effective, and non-perverse way of tackling what is now



**6X<sup>®</sup> education**

**WADWORTH**  
**6X<sup>®</sup>**  
*Handmade in Devices*

**Lessons available at a pub near you**

perceived as a major social problem. I say this because the package does not just attack the problem in the short term (by the use of the licensing system and possible new penal measures for example) but includes measures (e.g. restrictions on advertising and the introduction of "drinking education") designed to change the culture in the longer term. Make no mistake, this problem will only be addressed successfully if a long term approach supplements short term palliatives: politicians don't like to hear this bad news but there's really no escaping it.

There *are* people in CAMRA who, collectively, could put flesh on the bones and develop a coherent policy. For example, I know that three such individuals are to be found on our Campaigns Strategy Committee, so there is a nucleus of a task force already at hand. Yet time is not on our side; the Government is currently thrashing about, seemingly

without a proper strategy, and the danger is that panic measures will be introduced which will not work but which will pre-empt the introduction of some of the good measures which are available. What we need to do is to commission a small group to start work on the development of our strategy *immediately*. Because CAMRA is, above all, a democratic organization, it will be necessary for any policy produced to be available for the membership to consider it and come to a judgment on it at next April's AGM. This will require an outline of the major strands of the policy to be set out no later than the April 2006 *What's Brewing*. This is certainly a challenging task, but not an impossible one, provided someone is prepared to show the drive and leadership needed to take it forward. That someone should now be getting ready to step up to the plate.

Brian Sheridan

## CHRISTMAS PRESENT PROBLEM SOLVED?

**T**reat your nearest and dearest to a copy of the best-selling, lavishly-illustrated **Licensed to Sell: The History and Heritage of the Public House** by Geoff Brandwood, Andrew Davison and Michael Slaughter and published by English Heritage.

Copies can be mailed direct with a message of your choice on a slip of paper. And, if you haven't got your own copy yet, then now's your chance. The price in the shops is £14.99 but *London Drinker* readers can purchase for just £13.50 (incl. p&p) by cheque made out to Geoff Brandwood and sent to 15 Aston Street, London E14 7NE.

# The Inn at Kew Garden

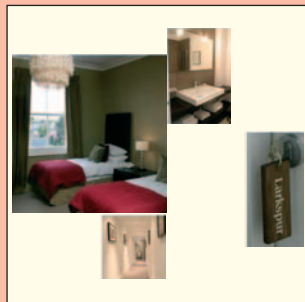
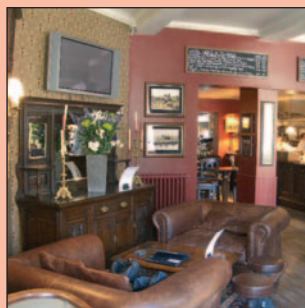
(Kew Gardens Hotel)

292 Sandycombe Road, Kew, Surrey TW9 3NG

Tel: 020 8940 2220

Email: [enquiries@theinnatkewgardens.com](mailto:enquiries@theinnatkewgardens.com)

*The Inn at Kew Gardens, recently restored to its original splendour - and then some! This beautiful pub boasts at least six traditional ales plus superb wine and reserve spirit list. With a wonderful garden, dining room and stunning mezzanine available for private hire, not to mention 19 bespoke hotel rooms, The Inn at Kew Gardens is no ordinary free house and too good to miss! Oh, and did we mention the food? Outstanding!*



ADNAMS. BEER FROM THE COAST.



ADNAMS PLC, SOLE BAY BREWERY, SOUTHWOLD, IP18 6JW. [WWW.ADNAMS.CO.UK](http://WWW.ADNAMS.CO.UK)

## NEWS ROUND-UP

E-mail: [ldnews@btinternet.com](mailto:ldnews@btinternet.com).

### ◆ Surprise move by Fuller's

**W**hilst we were all watching for Greene King or Wolverhampton & Dudley's next move, Fuller, Smith & Turner of Chiswick have sprung a surprise by acquiring the family-owned George Gale and Company in Horndean, Hampshire. The price was reported to be £92 million. Michael Turner, Fuller's chief executive, said a decision over the future of the 158 year old brewery and its 100 staff would be taken in a couple of months as part of a major review of Fuller's operations but all the brands would be retained. The deal adds 111 pubs to Fuller's estate, bringing them up to 361, well on the way to their stated target of 500. Gale's also has a substantial free trade portfolio. To answer your next question, Young's have 206 tied houses plus 500-600 free trade outlets.

To be fair, it is hard to criticise Fuller's because this makes good business sense to them and there is no evidence that there has been any opposition to the move from Gales; it looks like another 'cashing in', as with Ridleys. CAMRA is concentrating on the practical and has pledged to fight to prevent the closure of the brewery and will be seeking assurances from Fuller's that Gale's pubs will not lose the identity of the Hampshire brewer. Mike Benner,

chief executive, said, "*Gale's is a brewing landmark in Hampshire, brewing award-winning beers such as HSB and Festival Mild. We will campaign to protect this unique Victorian tower brewery from closure. There are potential beer portfolio clashes and we don't want to see Gale's Butser Bitter or Gale's Best handpumps replaced with Fuller's Chiswick or London Pride. Drinkers in Hampshire will not take kindly to the loss of their favourite beers.*"

Mr Benner continued, "*CAMRA has a good relationship with Fuller's and it has demonstrated its commitment to an interesting range of quality cask beers. We will be pressing Fuller's to continue this tradition and ensure Gale's beers continue to be brewed in their Horndean heartland.*" John Cryne, CAMRA's Brewery Liaison Officer and former National Chairman of CAMRA, said, "*Whilst we clearly oppose the takeover, it does provide some sort of counterbalance to the growing domination of W&DB and Greene King. Hopefully the fact that a family owned brewery has this time found shelter with another member of the Independent Family Brewers of Britain, rather than joining the 'big two' where its identity would quickly be subsumed, will result in a future for both Gale's and Fuller's.*" We can hope...

## There are now 14 more reasons to try GRAND UNION'S award winning ales.

The Grand Union range of award winning fine ales and beers continues to go from strength to strength.

During 2005 we've collected 14 more awards at CAMRA & SIBA beer festivals including 'Champion' Beer at the SIBA Southeast Beer Competition.

The Grand Union Brewery has rapidly established a reputation amongst fine ale enthusiasts for its range of high quality cask ales. It would appear that the festival judges are in full agreement.



**GRAND UNION BREWERY**



Brewhouse Lock, 10 Abenglen, Betam Road, Hayes, Middlesex, UB3 1SS • Tel: 020 8573 9888 • [info@gubrewery.co.uk](mailto:info@gubrewery.co.uk)

## ◆ Good news from Enterprise

**E**nterprise Inns, the pub chain with 9,400 outlets, has come to a welcome deal with SIBA (Society of Independent Brewers) to join their Direct Delivery scheme whereby Enterprise tenants can order from a range of more than 600 beers produced by 160 of SIBA's member breweries. The beers will need to be ordered centrally but delivery will be direct from the brewery rather than through Enterprise's national distribution chain, thereby safeguarding quality.

Enterprise meanwhile have pulled out of talks to buy the Spirit group and instead were planning to return £200 million to investors by way of increased dividends and share buy-backs. Interestingly, Enterprise's Chief Executive, Ted Tuppen, puts the group's success down to operating community and country pubs rather than 'high street' outlets, which are suffering in the current climate.

Spirit, who have already sold 360 underperforming pubs to the property entrepreneur Robert Tchenguiz, have also sold 178 bars, including the the Henrys and Bar 38 chains, which are very much 'high street', to the private equity company Alchemy for £177 million. This sees Alchemy's return to the pub business a year or so after it sold its InnSpired chain to Punch Taverns. Spirit are also negotiating with InBev to take Stella Artois and Lowenbrau lagers in their remaining pubs.

## ◆ Medals for Young's

**Y**oung's were the only British brewery to win two gold medals at the Brewing Industry International Awards in Munich this year which saw gold, silver and bronze medals presented to breweries from 18 countries as far apart as New Zealand, Russia and Canada. Young's Ram Rod and Oatmeal Stout were voted best in their class by the judges. Ram Rod, available throughout the year in bottles and which recently completed a two-month spell as a seasonal draught ale, had won a silver medal in the international awards in 1994. Oatmeal Stout, a firm favourite in the United States, has won two medals before in the awards: silver in 200 and bronze in 1998. In all, Young's have won 25 medals in the awards in the past 18 years: four championships, nine gold, seven silver and five bronze.

## ◆ and bouquets...

**L**esley Greenstreet, who runs the Coach & Horses in Barnes High Street, won the overall championship in Young's 2005 gardens competition. The judges, from the London Gardens Society, said; *"The patio is divided into compartments with the use of raised brick planters and trellis, which is covered in climbers. The colours and content of the hanging*

*baskets suspended from the trellis are excellent. Large wooden tubs with extra large cannas provide additional height and colour against the pub, which is covered in Virginia creeper. The whole effect is intimate but extremely colourful."*

Lesley, who received her prize when the result was announced at a ceremony at London's Guildhall, has been at the Coach & Horses only since last year and has no history of gardening. She puts her victory down to teamwork, with particular praise for her assistant manager, Jo Dimond-Brown, who is pictured with her on the patio in the cover photograph.

## ◆ Smoking

**W**ith the ban in Scotland ready to go next April, it has now been announced that Northern Ireland will ban smoking in all workplaces - including pubs, bars and restaurants - and public enclosed spaces as from 1 April 2007. For England and Wales, there have been rumours that the original concept of allowing smoking where food was not served - with all its problems of interpretation - is falling out of favour and the most likely possibility is now a total ban.

The latest Department of Health press release (issued 27 October) however indicates no change of plan: *"The Health Bill delivers the pledge in the Choosing Health White Paper to ban smoking in all enclosed public places apart from licensed premises that do not serve or prepare food and private members' clubs. This decision reflects the Government's commitment to reduce smoking and to cut the number of smoking related deaths. The measures will take effect from the summer of 2007. Their impact will be monitored from the outset and a review completed at the end of three years. We believe that these proposals offer the right balance between reducing the public health risk whilst allowing an element of choice for those who do want to smoke with a drink to do so in a way which has minimal impact on other people."* The mention of a review after three years could be significant.

## ◆ Cheers! An exhibition about local pubs

**T**here will be an exhibition at the Wandsworth Museum from 23 November 2005 to 26 February 2006. The introduction explains that "many of our local pubs have histories that date back several centuries. Over the years, these landmark buildings have been more than just places of refreshment. The pub has been a place to socialise, to hold business meetings and to gather together to discuss community affairs. Some local pubs began life as coaching inns while others became well-known centres for sport. Some have even quirkier

## NEWS ROUND-UP

histories. Find out about the local haunts of highwaymen, the pubs at the centre of Wandsworth's famous mock-elections, the inn at which Death provided refreshment for a group of undertakers and the notorious Red House (once described as 'a place out of hell which surpassed Sodom and Gomorrah')". The Museum is housed in The Courthouse, 11 Garratt Lane, SW18 4AQ - very close to Young's brewery.

### ◆ O'Hanlons link with Wetherspoons

O'Hanlon's Brewery, which moved from Vauxhall to Whimple in Devon a few years back, have announced that their beers are going to be supplied to 20 Wetherspoons outlets across Devon. This is quite an achievement given the competition in that part of the country. There has been little news on the Wetherspoon front recently, which is probably a good sign, although it is reported that they are still continuing with the policy of buying back their shares and they are opening seven new pubs, including one at the NEC in Birmingham. These are unlikely to serve Shepherd Neame Spitfire however as Wetherspoons and SN have fallen out over the price for supplying Spitfire, which is why it

has been replaced by Marston's Bitter in many outlets.

### ◆ A matter of taste...

The Japanese company, Asahi Breweries plans to release Asahi Super Yeast Draft Beer this winter, a new beer whose taste changes over time. The new brew contains yeast that continues to ferment to change the smell and taste of the beer as time passes. Yeast, which is placed in the bottles just prior to shipment, prolongs fermentation for two to three months. The brewer said that it will launch the drink in Hokkaido and six north-east prefectures on 30 November, with other parts of eastern Japan being supplied from 7 December. Sorry but I thought that the concept of beer changing flavour with time was long-established. It is called 'going off'...

### ◆ Rectory revived

Another friend (cor! That's two he's got), Paul Free who is Brewery Liaison Officer for the Rectory Ales Brewery in Plumpton Green, East Sussex, has passed on a press release from the directors of this unique company which has a clergyman as its brewer and is owned by his

# The Fox



◆ Ever changing guest beers - recently Sharp's Doom Bar, Timothy Taylor Ram Tam plus a selection of Winter Warmers and seasonal 'Mulled Wines'

◆ Maggie's Home Cooking

◆ Contained Pub Garden

◆ Quiz Night Thursdays

◆ Christmas Eve - Carols followed by disco

◆ Xmas Lunches and Dinners

◆ New Year's Eve Party

A genuine traditional family pub situated in a quiet side road, yet just 100 yards from the Grand Union Canal and Hanwell flight of locks.

Idyllic cycle and rambling routes.

Timothy Taylor's Landlord always alongside Deuchars IPA and London Pride.

10 minutes from Hanwell BR station.  
Tube - Boston Manor.

**Voted CAMRA West Middlesex  
Pub of the Year**



Green Lane, Old Hanwell, London W7 Tel: 020 8567 3912  
Open 11am - 11pm Monday - Saturday, 12am - 10.30pm Sunday

3 MINUTES WALK FROM THE NORTH END OF LONDON BRIDGE ...

“ *The oldest small pub  
in the City of London* ” ... Time Out

## THE BELL

29 Bush Lane, London EC4

Five cask ales always available including  
Deuchars IPA, Spitfire, Young's Bitter, Courage Best  
and a rotating guest beer

AND 3 MINUTES WALK FROM THE SOUTH END OF LONDON BRIDGE ...

## THE WHEATSHEAF

6 Stoney Street, London SE1

A full range of Young's cask & bottled ales  
and the occasional guest beer

Winner of 2004–05 Young's beer quality  
and cellar management competition

“ *Boasts the best atmosphere  
of any of the Borough  
Market pubs* ” ... Time Out



THE RED CAR PUB COMPANY

parishioners, with profits going towards the upkeep of three local churches. Brewing at the Streat Hill Brewery had to be suspended whilst the brewer was unwell but happily the Rev'd Godfrey Broster is back to near full health and he wishes to recommence producing his Traditional Sussex South Downs Beers & Stouts. The Board wishes him well and looks forward to seeing many old customers and visitors back to the Brewery on the South Downs. Brewing was due to start again on 22nd September 2005. Two celebratory ales were planned: 'Resurrection Ale (5.5% ABV) and 'Men in Black' (5.5% ABV).

### ◆ Whitbread bow out

**W**hitbread have sold their former brewery at Chiswell Street in the City. This includes the Porter Tun Room which had been converted into an events venue, used by CAMRA for its annual Awards Dinner. The purchasers, ironically, are CAMRA's landlords for the Great British Beer Festival, Earls Court and Olympia Ltd. The price paid was £55 million but, to Whitbread's embarrassment, the chief executive of EC&O Ltd said after completion that he thought that the site was worth at least £25 million more than what they paid for it and called the deal 'the steal of the century'. Rumours persist that Whitbreads, which

now consists mainly of the David Lloyd health clubs, Costa Coffee, Pizza Hut and TGI Friday operations and the Travel Inn hotel business, is going to be broken up.

### ◆ Odd happenings in Suffolk – and beyond

**S**hareholders in Adnams Brewery have recently been receiving telephone calls from an organisation called CS International, claiming to be working for the brewery. Not so, said Adnams' Chairman, Simon Loftus, So who were they working for then? Let us hope that it is not the usual suspects.

Adnams have just been given a Queen's award for improving the environmental impact of their brewing operation. Meanwhile, on the Isle of Wight, I note that Greene King were fined £11,000 after a failure of the sewage treatment plant at the Folly Inn, Whippingham, polluted the adjoining River Medina.

### ◆ Win for the White Horse

**C**ongratulations to Mark Dorber of the White Horse, Parsons Green for coming top of the Morning Advertiser's poll of the country's top 20 pubs. The award was voted on by leading industry figures, including chief executives and trade

## Mitre

24 Craven Terrace, London W2 3QH

Tel: 020 7262 5240

Email: [enquiries@mitrebayswater.com](mailto:enquiries@mitrebayswater.com)

*The Mitre, the most splendid of listed, beautifully restored London free houses.*

*Always a fine selection of well kept traditional ales on offer here accompanied by some delicious home-cooked favourites.*

*One of the most elegant bar counters in London makes this a must for true beer enthusiasts!*



# Relax

no need to rush...

our great ales  
are available  
even longer

most of our pubs  
are now open:

Sunday – Thursday  
9am – Midnight

Friday – Saturday  
9am – 1am

For your locals opening times, visit our  
website at [www.jdwetherspoon.co.uk](http://www.jdwetherspoon.co.uk)



**wetherspoon**

representatives from breweries and pub companies. Mark's success was down to his consistently high standards and attention to detail, especially with regards to matching – and encouraging customers to drink – beer to food.

## ◆ The ideal job?

**M**arketPublic, who provide 'mystery shopper' services to retailers are extending their services to the licensed trade. The idea is that a licensee can arrange a visit to help them assess the standard of service in the pub. They can either have the check done against a standard set of criteria or choose specific areas to be examined, including the standard of food. The cost per visit is £36 plus expenses. I recall the words of Yosser Hughes from 'Boys from the Black Stuff' many years ago: "I can do that; gissa job". Alternatively, the licensee could just spend some time in his or her own pub and see what is going on, I suppose...

## ◆ Flexible hours

**G**o on, have a drink, it's Christmas – or do I have to say 'festive season' now? The deadline for licence renewals has passed and, as we go to press, I have not heard anything to substantiate the various

'doom and gloom' stories that were doing the rounds a few weeks back.

Meanwhile, London's first 24-hour pub is reported to be the Swan Tavern, a discreet and very pleasant Fullers house in Ship Tavern Passage, off Gracechurch Street in the City. But would there be 24 hour a day business here? Simon Emeny, Fuller's retail director explained, "*There is no intention to run it all hours – it merely saves on the need to get special licences to allow customers to watch out-of-hours events such as the Lions rugby tour Down Under.*" The police were apparently worried about the noise but, as Mr Emeny pointed out, the customers of the Swan are 'at the more mature end' and nobody actually lives near the pub anyway.

Matthew Harris of the Griffin in Norwich was actually planning to open for 70 consecutive hours from Friday 25 November to Sunday 27 November in order to prove that the new laws will provide flexibility and benefits rather than cause disorder. Good luck to him and his customers.

## ◆ Government elf warning

**F**rom the Real Beer website, a topical item... State officials in Connecticut want to ban a holiday beer label they worry might entice children to drink beer, sparking a possible constitutional battle and virtually guaranteeing the beer will sell out. At issue is the label on the British import, Seriously Bad Elf. It shows a scowling elf with a slingshot firing Christmas ornaments at Santa's sleigh as it flies overhead. State liquor regulations bar alcohol advertising with images that might appeal to children, and the regulations specifically mention Santa. "*There are certain symbols and images that appeal more strongly to children and this regulation includes the most obvious among them,*" Attorney General Richard Blumenthal said. "*The state has wide discretion to regulate the sales of alcohol.*" The state Liquor Control Division notified Massachusetts-based Shelton Brothers distributors that it was rejecting its application to sell the beer, a bitter winter ale brewed at the Ridgeway Brewery in England. Bad Elf and Seriously Bad Elf are sold in 30 other states without any problems.

## ◆ Yet another loss for Bud

**A**nheuser-Busch have lost yet another court case, this time in the European Court of Human Rights. They were appealing against a 2001 decision by Portugal's Supreme Court, which ruled that Budejovicky Budvar had the right to use the brand name under a 1986 treaty between the Czech Republic and Portugal, which protects registered designations of origin.

Tony Hedger

**North London Pub of the Year 2005**  
 With our ever changing range of guest beers  
 as well as Milton Brewery Ales  
 on our 8 Handpumps  
 plus Czech Budvar, Real Cider and Pub Grub  
 The Oakdale is well worth a visit!

**OAKDALE ARMS**  
 283 Hermitage Road, Harringay, N4 1NP  
 0208 800 2013 [www.individualpubs.co.uk/oakdale](http://www.individualpubs.co.uk/oakdale)

## A REVITALISED PUB AND A BREWERY IN HAMPSTEAD!

For the first time since time immemorial, there is to be a brewery in Hampstead, admittedly very small, but a brewery nonetheless and full mash. Not only that, it will operate from about mid-February next year from a pub that for many months has been on its last legs, the former Wetherspoons pub, the Three Horseshoes at 28 Heath Street. Wetherspoons sold it a little while ago to the London & Edinburgh Pub Co who have sold it on to a private company, and so this is definitely a free house. The pub will be closed for a while for a major refurbishment that will include a kitchen. The head brewer is a young Australian, Jasper Cuppaidge, who has actually been over here for 15 years and has wide experience and contacts in the brewery world.

Jasper tells me that they intend having two of their own real ales on the bar, a house beer and a seasonal, along with guests. Some of the guests will be served

straight from the cask behind the bar. Already they have ripped out all the nasty British brewed lagers and replaced them with three continental lagers including Amstel. There is also a good bottled beer range. Real ales on at the time of writing were Adnams Bitter, Adnams Explorer and St Peter's Organic Best Bitter, all in very good condition.

Likely to be called the McLaughlin Brewhouse - Jasper tells me McLaughlin is a family name - the brewery will be in the pub cellar with a glass window to a corridor. With already superb pubs in Hampstead such as the Holly Bush, the Duke of Hamilton and the Flask, a revived real ale pub run with enthusiasm and commitment is great news, particularly with a brewery, not forgetting the well known fringe theatre, Pentameters, upstairs. Watch out for further details.

*Robin Forshaw-Wilson*

### Not the Good Beer Guide

The 2006 Real Ale Pub Guide produced by Foulsham Publishing is not a CAMRA publication, nor does it claim to be one. Its area listings of pubs and breweries are inconsistent and unreliable. Of ten pub entries for London SW15, one is now a building site and two others are for the same pub, under its old and new names. A foul sham indeed.

## The Magpie & Crown

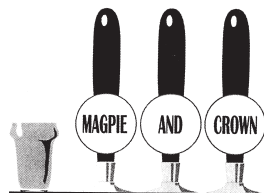


- ◆ Draught Budvar, Hoegaarden, Paulaner Münchener Lager & Bavarian Wheat Beer
  - ◆ Quiz Night Thursday
  - ◆ Bar billiards
  - ◆ Cycle rack
  - ◆ 2006 Good Beer Guide
  - ◆ Beers from Grand Union and Twickenham Breweries
- AT THE TIME OF THIS ADVERTISEMENT WE HAVE SERVED 1402 1525 DIFFERENT BEERS

**Come and celebrate our 10th anniversary  
4th January 2006**

**128 High Street  
Brentford, Middx  
Tel: 020 8560 4570**

- ◆ Only 30 minutes from main line Waterloo
- ◆ 4 ever-changing guest ales from £2.10
- ◆ 3 traditional ciders & the occasional perry
- ◆ Foreign bottled beers selection
- ◆ Food is back  
Thai menu Mon - Sat  
Trad Sunday roast



*Steve and the staff look forward  
to seeing you soon*

**T**hirteen people went on the London Pubs Group (LPG) crawl of North London on Saturday 15 October. This was fewer than usual but it did clash with the Twickenham Beer Festival and some London football matches. The only pub we could not get into was the Army and Navy, Matthias Road, N16 because it was full of people watching the football and there seemed to be some function on there as well. After we left the last pub on the crawl, the Stag's Head, Orsman Road, N1, some of us visited the Macbeth, Hoxton Street, N1 because we had heard that it had recently reopened after refurbishment. Generally the interior did not impress us but one feature was outstanding – a very large tiled mural along one wall depicting the scene in “Macbeth” when Banquo's ghost appears at the banquet. It is well worth visiting the pub to see this mural.

There is news on some pubs on the London Regional Inventory. The Clifton, Clifton Hill, NW8 has been sold by Mitchells and Butlers but I do not know who has bought it – any information on this would be welcome. The Old Pack Horse, Chiswick High Road, W4, which featured in one of our crawls earlier this year, has been refurbished but they have done a good job. I understand that the Assembly House, Kentish Town Road, NW5 is being, or has been, refurbished – if anyone has an update on this I should be grateful. Queen's Hotel, Broadway Parade, N8 is

also being refurbished but the plans do not appear to compromise the historic features of the pub. The Duke's Head, Lower Richmond Road, SW15 has been statutorily listed at Grade II.

Have you visited the LPG website [www.londonpubsgroup.co.uk](http://www.londonpubsgroup.co.uk) yet? The site has news about pubs on the Regional Inventory, write ups of LPG crawls, a contacts page, announcements of future LPG meetings and crawls and a new section called “Historic Pubs”. This section is designed to contain articles and pictures of pubs which are on the London Regional Inventory. If you would like to submit any pictures and/or articles for this section of the website please e-mail them to me [janeandrob@beeb.net](mailto:janeandrob@beeb.net).

Finally, as I mentioned in a letter to *London Drinker* some time ago, I wonder if any reader can enlighten me – the Starting Gate, Wood Green was refurbished several years ago but before it was refurbished it had some lovely painted panels depicting pastoral scenes and one panel showed Alexandra Palace. During refurbishment these panels were removed. Does anyone know what happened to the panels? If you have the answer to this or any news about pubs on the London Regional Inventory please e-mail me at the above address or send a letter to *London Drinker*.

*Jane Jephcote*  
Chair of London Pubs Group



**realale.com**

**THE PERFECT CHRISTMAS/  
NEW YEARS GIFT -  
A LOT BETTER THAN A PAIR  
OF SOCKS!**

We specialise in selling a large range of bottle-conditioned ales and ciders. In our shop and online you will find 2 to 3 microbrewers represented from each of the following regions; Scotland, Northern England, the Midlands, East Anglia the South of England and others to be added in the near future (South West).

**Over 60 ales and ciders!**

*Order online or call our mail order  
number now!*

**020 8892 3710**

**[info@realale.com](mailto:info@realale.com)**

Real Ale Limited, 371 Richmond Road  
Twickenham TW1 2EF

**Come on down to the  
TULSE HILL  
TAVERN**

**150 Norwood Road  
London SE24 9AY**

**Tel: 020 8674 9754**

**We pride ourselves on the quality of our Real  
Ales - Marston's Pedigree available at all times.**

**At the time of going to press we have  
Greene King IPA plus ever continuing Guest  
Ales from Black Sheep, Wadworth &  
Shepherd Neame**

- ◆ Bar snacks par excellence
- ◆ Good range of bottled beers
- ◆ Beer garden front and back
- ◆ Disabled toilet facilities
- ◆ “Board Games” Night every Wednesday
- ◆ Function Room available Friday nights
- ◆ Darts - random mixed doubles each month
- ◆ Karaoke on Saturdays



## TRAFALGAR FREEHOUSE

A traditional 'local'

23 High Path, Merton, SW19 2JY

Phone: (020) 85425342 e-mail: [trafalgar@thetraf.com](mailto:trafalgar@thetraf.com)

Web: [www.thetraf.com](http://www.thetraf.com)

**Always a choice of cask conditioned beers**

\*\*\* 5 minutes walk from South Wimbledon Tube \*\*\*  
see [www.thetraf.com](http://www.thetraf.com) for a map...



### Christmas & New Year Opening

Sat 24th December: Midday to 10pm  
Sun 25th December: Midday to 2.30pm  
Mon 26th December: Midday to 10pm  
Tue 27th December: Midday to 10pm  
Wed 28th December: 11am to 11pm  
Thu 29th December: 11am to 11pm  
Fri 30th December: 11am to 11pm  
Sat 31st December: Midday to 8pm\*\*\*  
Sun 1st January: 2pm to 10pm  
Mon 2nd January: Midday to 10pm

\*\*\*Private Party after 8pm on New Years Eve

**Quiz every Monday night from 8.30pm (ish...)**

### Food at the 'Traf'

#### Tuesday 13th December 2005

From 7.30pm until 9pm

Steak & Kidney Pie or Butter Bean & Mushroom Pie  
Served with Horseradish Mashed Potatoes  
& Seasonal Vegetables

**£5.99**

Includes a pint of beer, a 175ml glass of wine or a soft drink

#### Christmas Lunch - £8.95

Monday to Friday 12 to 2

12th to the 23rd December

Advance bookings only - See website for details

#### Tuesday 10th January 2006

7.30pm until 9pm

Curry and a Pint

**£5.99**

# Ye Olde Monken Holt

193 High Street, Barnet, Herts EN5 5SU

Tel: 020 8449 4280

Email: [enquiries@yeoldemonkenholt.com](mailto:enquiries@yeoldemonkenholt.com)



*Ye Olde Monken Holt, North London's best-kept secret. A wonderful, cosy, locals' pub, serving an excellent selection of at least 3 real ales with regular guests. Delicious home-cooked food, the best Sunday lunches and a stunning conservatory and beer garden to enjoy in the summer along with sizzling barbecues. A must-see for all. Frances and her staff are always hugely welcoming.*

Dear Editor

## A FULLER CHOICE?

In July last year I wrote to *London Drinker* concerning the Plough in Northolt. My letter appeared in the October/November 2004 issue and described the pub as a rare local outlet for cask ESB. The sad update is that the Plough has now stopped selling not only ESB but also London Pride on handpump. It joins the nearby White Hart at Yeading as a Fuller's pub no longer selling real ale.

The other local Fuller's issue is the site of the Master Brewer at Hillingdon Circus which the Brewery appears determined to sell off for supermarket development in spite of opposition from residents and other traders in the area. This local blight gives a misleading impression when the overall Fuller's outlook is so positive. London Pride is more widely available than ever. ESB could have been allowed to wither and die; instead it has been relaunched and promoted with a new livery. Winter and spring saw the welcome return of dark beers with Porter and Hock, which should go on to win well deserved awards.

I hope that one day some of the glittering prizes might trickle down to the deprived drinkers of Northolt and Yeading. Otherwise long may the Fuller's success story continue.

Roger O'Brien  
South Ruislip

Dear Editor

## BEER CULTURE – PARISIAN STYLE

Drinking beer has suddenly become hip among the trendy young people of Paris. But is not beer as we know it – flavoured beers are the styles being pushed by the big brewers. The favourite is Desparados, a disgusting mixture of beer and tequila.

It is also next to impossible to find anything about French beer and hard to find products from the smaller brewers on sale in many Parisian bars.

On a recent visit to Paris I came across a reference to a new bar complex – Culture Bière – on the Champs Elysées and I was eager to find out more. The bar appears to be run by Heineken and largely showcases that brewery's products. On the ground floor is a bar selling the company's beers and a range of souvenirs and books. In the basement is an achingly hip bar and the first floor is an upscale restaurant which uses beer in its dishes.

For the beer connoisseur the place is somewhat disappointing, because only the most popular (and blandest) brands are on sale. On the other hand there were leaflets and brochures about the various beer styles and (this being France) the foods they can

be served with, which is welcome if they encourage visitors to try something else than lager. The staff were friendly and the barman spoke excellent English and seemed very knowledgeable about beer. It is just a pity that he did not have anything interesting to serve.

Culture Bière  
65 avenue des Champs Elysées  
Tel: 01 42 56 88 88  
[www.culturebiere.com](http://www.culturebiere.com)  
Simon Fowler

Dear Editor

I am a collector of old brewery cast iron bottle openers. I am trying to get one of each brewery's opener. I was hoping readers of *London Drinker* could help. I am looking for cast iron bottle openers from the following breweries: Fullers; Harris Browne; Jenners Noakes; Smith Garretts Trumans; Wests. If any readers could help I would be most grateful if they could contact me on 01422 379334.

Andrew Wright  
Halifax

Dear Editor

## EVA HART

I notice that the 2006 Good Beer Guide includes the Wetherspoon Eva Hart in Chadwell Heath, East London. The pub is named after a local woman was a survivor of the Titanic disaster and lived in Chadwell Heath for the rest of her life. However the current GBG description, which has also appeared in previous editions, claims that she was the longest-lived survivor, which is incorrect. When Eve died in 1996, aged 91, there were still another six or seven alive and as at April 2005 there were still three remaining survivors.

I have pointed out this error to Wetherspoons who have stated that they do not describe Eva as the longest-lived survivor in their descriptions of the pub and the pub memorabilia. I have also pointed out this error to CAMRA HQ and to the local SW Essex Branch.

Don't let this error put you off visiting the Eva Hart or the nearby Wetherspoon, the Standard Bearer in Goodmayes, which also has some memorabilia about Eva. I would recommend both pubs, which deserve their GBG entries.

For those of you who are a little flush and can afford somewhere more expensive than a Wetherspoon, another local pub you could try is the Hawbush in Barley Lane, Little Heath where a pint of Bass will set you back £1.85.

Colin Price  
Barking

THE CAMPAIGN FOR REAL ALE (SOUTH WEST LONDON BRANCH)  
PRESENTS



Design by John Geipel

# **The 16<sup>th</sup> Battersea Beer Festival**

**Over 100 Real Ales from across Britain**

**Ciders and perries - Foreign beer - Food**

**8 – 10 February 2006**

**Open Wednesday to Friday, from noon till 11pm**

**Grand Hall, Battersea Arts Centre**

**Lavender Hill, London SW11**

**10 minutes walk from Clapham Junction Station**

**£2 admission (£3 after 5pm)**

**(£1 Wed before 5pm)**

**£1 discount for CAMRA members at all times**

**The Red Lion**  
**1 Mill Lane,**  
**Godalming,**  
**Surrey**  
**01483 415207**



**The only family-owned and  
run Freehouse in Godalming**

*(5 minutes from Godalming station on the  
Waterloo/Portsmouth line)*



Still offering excellent fresh food  
and delicious Sunday lunches

## **The 42 Beers of Christmas**

*To celebrate the Landlord's  
Birthday & Christmas*



*Wishing all our supporters a  
Merry Christmas &  
a Happy New Year*



*We are open all day every day  
Surrey/Hants CAMRA Surrey Pub of  
the Year 2002*

*CAMRA Good Beer Guide  
1994/5/6/7/8/9/2000/1/2/3/4/5*

Email: bestpubbloke@aol.com

## **LETTERS**

**Dear Editor**

I have just ploughed through Vol 27#3 – usual standard and variety but I must point out, since it really gets on my (and others') nerves:

- i) the continuous use of the childish term 'crawl'.  
What lads!
- ii) They always 'retire to' or 'adjourn' ...
- iii) ... and to where? A hostelry, of course.
- iv) Once inside they 'imbibe', 'sample' or 'quaff' their 'beverages'.

What lads indeed! Why cannot the authors of such articles 'visit' or 'go' on a pub 'tour' and 'go into a pub for a drink' or 'try a pint of beer/ale'?

And certain CAMRA types make their visit obvious – charging up and down sampling, childishly or laddishly calling out. Very often there is at least one with anorak and beard.

And there cannot be any objection to women drinking pints – but do we all need to know? There is noise about the glass size at the bar and/or the parading of the pint, often to the furthest table from the bar.

CAMRA does a very good job but there are too many 'types' who attract adverse comments.

*A N Onimus, North London*

## **TWO DOVES**

37 Oakley Road, Bromley Tel 020 8462 1627



*A warm welcome awaits you in the  
relaxed surroundings of this friendly pub*

**PUB OF THE YEAR 2000**  
CAMRA SE London

**Young's selection of Real Ales**  
**Young's Award Winning Garden**

**CAMRA Good Beer Guide listed**  
**Mature Clientele • Light Snacks**  
Bus 320 from Bromley North and Bromley South  
railway stations stops outside

Hours: Mon-Thu 12-3, 5.30-11; Fri 12-3, 5-11.30;  
Sat all day 12-11; Sun 12-4, 7-10.30

Smarter Music presents



**CHAS 'n' DAVE'S**  
**CHRISTMAS BEANO**

Special guests **THE ROLLIN STONED**  
**THURSDAY 15TH DECEMBER 2005**  
**SHEPHERDS BUSH EMPIRE**  
0870 771 2000 020 7734 8932 08702 643 333  
Book online [www.smartermusic.net](http://www.smartermusic.net)

**JAH WOBBLE**  
& the English  
Roots Band  
+ Gaz Mayall's  
Fusion Vinyl Mix



**100 CLUB**  
100 Oxford Street, London W1  
**Wed 28th December 2005**  
[www.bangbang-live.com](http://www.bangbang-live.com)  
Ticket agencies: 0207734 8932  
08702 643 333 08700 600 100

## Club Bang! Bang! @ the 100 Club

Fri 9 Dec – Only London date  
**THE DYLAN PROJECT**  
Simon Nicol, Dave Pegg, Steve Gibbons,  
PJ Wright, Gerry Conway

Fri 16 Dec – The Christmas Ska Ball  
From **THE SPECIALS** and **FUN BOY 3** + **DJ DAVE EDWARDS**  
**NEVILLE STAPLE**  
9 TON PEANUT SMUGGLERS + CHANNEL 1 SOUND SYSTEM



Fri 23 Dec – Fantastic Double Bill:  
**Wilko Johnson**  
**Wreckless Eric**

Thu 29 Dec: Space Rock Double-header  
From Wales **MAN** From elsewhere **THE GREEN RAY**

Fri 30 Jan: Alternative New Year's Eve  
**CHAS 'n' DAVE**  
**ED TUDOR-POLE + SMASHING TIME**

Fri 6 Jan: The King of Ska – Exclusive  
**DESMOND DEKKER**  
& **THE ACES + SKA DADDY**

Thurs (£16.50 adv) & Fridays (£18.50 adv) 19, 20; 26, 27 Jan 2006  
FOUR OF THOSE DAYS IN ENGLAND: A Unique Retrospective (#2)  
**ROY HARPER** + **MATT CHURCHILL** + guests  
These events are **NO SMOKING**



**100 CLUB, 100 Oxford Street, London W1**  
Midway between Oxford Circus & Tott. Court Road tubes. TWO REAL ALES. Tickets/info:  
**[www.bangbang-live.com](http://www.bangbang-live.com)**  
Stargreen\* 020 7734 8932 Seetickets\* 08702 643 333 Ticketweb\* 08700 600 100  
Tickets for personal callers at face value (cash only) from: JB'S RECORDS, 36 Hanway Street, W1 between  
1pm and 7pm, Mon-Sat (Tottenham Court Road tube). \*Tickets bought from agents subject to booking fee.

# BRANCH DIARY

**W**elcome to our regular details of London CAMRA contacts and events. This is where branches can say what is happening in their areas that might be of interest to drinkers across London. Events for December 2005 and January 2006 are listed below.

Branch meetings and socials are open to all - everyone is welcome to come along.

## LONDON REGIONAL MEETING

**January - Wed 25 (8pm)** London Liaison Committee (Regional co-ordination meeting for London Branches). Royal Oak, Tabard St, SE1. *Secretary: geoff@coherent-tech.co.uk*

**LONDON PUBS GROUP** *Jane Jephcote 020-7720 6327, janeandrob@beeb.net*

**December - Wed 7** Evening crawl of Maida Vale and Bayswater: (7pm) Warrington Hotel, 93 Warrington Cresc, W9; (7.45) Prince Alfred, 5a Formosa St, W9; (8.15) Warwick Castle, 6 Warwick Pl, W9; (9.15) Victoria, 10a Strathearn Pl, W2; (10pm) Mitre, 24 Craven Terr, W2; (10.45) Black Lion, 123 Bayswater Rd, W2. Public transport will be required at times.

**January - Wed 18 (7.15 for 7.30)** Mtg. Royal Oak, Tabard St, SE1 (upstairs). All branches and members interested in pub research and preservation welcome.

*Website: www.londonpubsgroup.co.uk*

**BEXLEY** *Martyn Nicholls 01322 527857 (H), contacts@camrabexleybranch.org.uk*

**December - Wed 14 (8.30)** Mtg Old Wick, Bexley followed by Xmas meal at Old Greek Taverna (tbc).

**January - Wed 11 (8.30)** Mtg. One Bell, Crayford.

*Website: www.camrabexleybranch.org.uk*

**CROYDON & SUTTON** *Terry Hewitt 020-8660 5931 (H), 020-7126 4448 (W)*

**December - Thu 1 (8.30)** Mtg and LD pick-up: Windsor Castle (Cottage Room), 378 Carshalton Rd., Carshalton. - **Sun 4 (noon)** Xmas social: Beer Circus, 282 High St., Croydon (please bring items to raffle). - **Mon 19 (8.30)** Croydon Social: Hoghead, 58-60 High St. - **Thu 29 (8pm)** Jazz at Lord Napier, 111 Beulah Rd., Thornton Heath.

**January - Wed 11** SE19 Crawl: (8pm) Cambridge, 2 Church St; (9pm) Royal Albert, 42 Westow Hill; (10pm) Postal Order, 31-3 Westow Hill. - **Wed 18 provisional (6.30)** Presentation of Wallington Beer of the Festival. Griffin Brewery, Chiswick W4 (places limited). - **Thu 26 (8.30)** Mtg and LD pick-up (incl. boro' selection for PotY and GBG selection): Windsor Castle (Cottage Room), 378 Carshalton Rd., Carshalton.

*Website: www.croydoncamra.org.uk*

**EAST LONDON & CITY** *Marion Robbins 07960 268773*

**December - Thu 8/Fri 9 (6pm - 11pm)** Leyton Orient Supporters Club mini beer festival, new club house, Oliver Rd E10. Free half pint on CAMRA/supporters club membership card. - **Tue 13 (7.30)** Mtg. Coborn Arms E3 - **Tue 20 (8pm)** Pre-Xmas social. Drum E10.

**January - Tue 13 (7.30)** Mtg. City Pride, Farringdon La.

*Website: www.pigsear.org.uk*

**ENFIELD & BARNET** *Sandie Ward 020-8884 0075 (H)*

**December - GBG promotion socials (both 8.30): -Thu 1 (and LD pick up)** Sebright Arms, 9 Alston Rd, Barnet EN5 - **Tue 6** Woolpack, 52 High St, Southgate N14; (both 9pm): **Thu 15** Catcher in the Rye, 315-319 Regents Park Rd, N3. - **Tue 20** Crown & Horseshoes, 15 Horseshoe La (off Chase Side), Enfield EN2

**January - Sun 1** 12 noon Cobweb Social, Orange Tree Highfield Rd, Winchmore Hill N21. - **Thu 5** North Finchley N12 two pub social: (8.30) Malt & Hops; (9.45) Elephant Inn. - **Wed 11 (8.30)** Branch mtg (CAMRA members only - BRING MEMBERSHIP CARD) Enfield Town Club, Old

Park Av, Enfield. EN2. - **Tue 17 (9pm)** Madden's, 130 East Finchley High Rd, N2. - **Thu 26 (9pm)** Social and LD pick up. Old Wheatsheaf, 3 Windmill Hill, Enfield EN2.

**Advance Notice:** Fri 11 to Sun 13 March. Trip to St. Niklass Beer Festival, Belgium. Approx. cost £160: booking deadline 26 January. Contact Tony Roberts 020 8482 9673 (H) 0772 419 3414 (M), [anthonyroberts@hotmail.com](mailto:anthonyroberts@hotmail.com)

**KINGSTON & LEATHERHEAD** *Clive Taylor*

*0208.949.2099. (H) 0208.540.1901 (W), clive@paylor2005.wanadoo.co.uk, kandi@camrasurrey.org.uk*

**December - Thu 1 (8.15).** Mtg. Berrylands, Chiltern Drive, Berrylands, nr rail station. - **Sat 3.** Day visit to Reading by train, whichever route is most convenient. Meet (12-12.30) Three Guineas on station, then Outlook, Kings Rd; Eldon Arms, Eldon Terr and others. Let me know if interested. - **Tue 6.** (7.30) Pre Xmas dinner. Woodies, New Malden. Deposit £5, book by 28 Nov. - **Tue 20 (7.30 for 8pm)** Xmas dinner. Wych Elm, Kingston. Deposit £5, book by 13 December.

**January - Thu 5 (8.15)** Mtg. Bishop out of Residence, Kingston. - **Fri 13** Kingston crawl: (8pm) Albert Arms, Kingston Hill, then including Park Tavern, Wych Elm and Willoughby Arms. - **Tue 17 (8pm).** Surrey Staff Club, Penrhyn Rd, Kingston Help to 'lick and stick' mail out for AGM.. Real ales available. - **Tue 24** Curry evening in Surbiton. Meet (7.30). New Prince then across road to nearby curry house. - **Thu 26 (8.30)** Cttee mtg. Waggon & Horses, Surbiton.

*Website: www.camrasurrey.org.uk*

**NORTH LONDON Social contact: Mike Rose 07986 458517, mikewrose@blueyonder.co.uk; Branch contact: John Cryne 020-8452 6965, john.cryne@uk.pwc.com**

**December - Tue 6 (8pm).** London Drinker Beer Festival planning mtg. Wenlock Arms, 26 Wenlock Rd, N1. - **Tue 13 (7pm)** Xmas Party. Doric Arch (former Head of Steam) Euston Station Colonnade, 1 Eversholt St, NW1. - **Tue 20 (8pm)** WC1 Winter Warmer Social. Rugby Tavern, 19 Great James St; Lamb, 94 Lambs Conduit St; Calthorpe Arms, 252 Grays Inn Rd.

**January - Tue 3 (8pm)** N1 Social. George & Vulture, 67 Pitfield St; Eagle, 2 Shepherdess Walk; Wenlock Arms, 26 Wenlock Rd. - **Tue 10 (8pm)** Winter Pub of the Season presentation. Junction Tavern, 101 Fortess Rd, NW5. - **Tue 17 (8pm)** Social. Oakdale Arms, 283 Hermitage Rd, N4. - **Tue 24** GBG & POS selection (8pm) Kings Arms, 11a Northington St WC1.

*Website: www.camranorthlondon.org.uk*

**RICHMOND & HOUNSLOW** *Brian Kirton 020-8384 7284 (H), sk014j4253@blueyonder.co.uk*

**December - Thu 8 (8.30)** Mtg. Old Anchor, 71 Richmond Rd, Twickenham. - **Thu 15** Joint social with West London Branch in Chiswick and Brentford. Meet (7pm) City Barge, 27 Strand on the Green W4, then (7.30) Bell & Crown; (8.15) Express; (9.15) Brewery Tap; (10.15) Maggie & Crown. - **Fri 16** Branch Xmas party. Cabbage Patch, 67 London Rd, Twickenham. Meet (8pm) for meal around 8.30. Booking essential via the web site or John Austin, 020-8892 6169, [john.austin@blueyonder.co.uk](mailto:john.austin@blueyonder.co.uk). Menus and further details on web.

**January - Thu 5 (8pm)** Social 'run' (jog, skip, walk, slither) in Mortlake from Charlie Butler, 40 Mortlake High St; then (8.45) Railway, Sheen La; (9.30) Ship Tavern, 10 Thames Bank; (10.15) Jolly Gardeners, 36 Lower Richmond Rd. - **Thu 12 (8.30)** Mtg. Coach & Horses, Kew Green. All welcome with suggestions for the 2007 GBG - **Thu 19 (8pm)** Informal social. Fox, Church St, Twickenham.

*Website: www.camra.org.uk/richmond*

**SOUTH EAST LONDON.** *Richard Martin 020-8402 0424*

**December - Tue 6 (8pm)** Branch/Cttee mtg and social. Gowlett, Gowlett Rd, SE15. - **Sat 10 (8pm)** Branch Xmas

# BRANCH DIARY

Party. Royal Oak, 44 Tabard St, SE1.

**January – Thu 5** (8pm) Branch/Cttee mtg. Tigers Head, 350 Bromley Rd, SE6. - **Sat 7** Giant beer scoring crawl of SE10 Greenwich: (12 noon) Pilot; (1pm) Star & Garter, 60 Woolwich Rd; (2pm) Yacht, 5 Crane St; (2.35) Trafalgar Tavern, Park Row; (3.30) Plume of Feathers, 19 Park Vista, thence ring Roz on the day on 07796 272 730. - **Tue 10** SE16 Social. (7.30) Ship, 39/47 St. Marychurch St, then Mayflower, 117 Rotherhithe St. - **Tue 17** (7.30) Social. Cricketers, 93 Chislehurst Rd, Orpington. - **Sat 21** Brockley crawl: (4pm) Wickham Arms, 69 Upper Brockley Rd; (5pm) Brockley Barge, 184 Brockley Rd; (6pm) Brockley Jack, 410 Brockley Rd; (7pm) Mr Lawrence's, 389 Brockley Rd. - **Thu 26** (7.30 prompt) **Branch AGM**. Bromley Labour Club, HG Wells Centre, St Marks Rd, Bromley. - **Mon 30** (8pm) 2006 Catford Beer Festival planning mtg. Dog & Bell, Prince St, Deptford SE8.

Website: [www.selcamra.org.uk](http://www.selcamra.org.uk)

**SOUTH WEST ESSEX.** Andrew Clifton 01708 765150

(H), [swessex@clara.co.uk](mailto:swessex@clara.co.uk)

**December – Thu 1** (7pm) Social at Harwich & Dovercourt Winter Ale Festival, Kingsway Hall, Dovercourt (For further details see Colchester Branch website

[www.colchestercamra.org.uk](http://www.colchestercamra.org.uk) or Harwich Net website

[www.harwich.net/beerfest.htm](http://www.harwich.net/beerfest.htm)). - **Tue 6** (7pm) Bowling social.

The Brewery, Romford (bookings to Anne Radley 01708

250146) followed by Moon and Stars, 99/103 South St.

Nominations required for GBG 2007. If you can't make this

and want to suggest a pub, please contact Andrew Clifton

(Branch Contact) - **Fri 16** (8.30) Xmas social. Britannia, 1

Church Rd, Barking, just off Ilford La/Fanshawe Ave (A123).

Come and enjoy Rita's legendary buffet!!! - **Tue 20** (8.30)

Social. Crumpled Horn, 33-37 Corbets Tey Rd, Upminster. -

**Thu 29** (8.30) Social, Eva Hart, 1128 High Rd (A118, corner of

Station Rd), Chadwell Heath.

**January – Thu 5** (8pm) Chelmsford Social, either 7th

Chelmsford Winter Beer Festival (venue TBC) or Queens

Head, 30 Lower Anchor St. - **Fri 13** (8pm) Branch 30th

Anniversary social. The Lodge, Corbets Tey Rd, Upminster. -

Tickets £6 inc Buffet; Beer 30/- a pint. Tickets/enquiries to

Branch Contact. - **Tue 17** (8.30) Social, White Horse, 173

Coxtie Green Rd, Coxtie Green - **Thu 26** (8.30) Social, Bell,

High Rd, Horndon on the Hill.

**Advance Notice: February – Wed 15** (8.30) **Branch AGM**.

Travellers Friend, 496/498 High Rd (A104), Woodford Green.

Nominations and motions/matters for discussion to Secretary,

Andrew Clifton, 46 Havering Dr, ROMFORD RM1 4BH or

by e-mail by Wed 8 February.

Website: [www.swessex.clara.net](http://www.swessex.clara.net)

**SOUTH WEST LONDON** Mark Bravery 020-8540 9183

(H), 020-7147 2860 (W), [markbravery@blueyonder.co.uk](mailto:markbravery@blueyonder.co.uk)

**December – Mon 5** (7.30) Xmas meal and social. King's Arms,

96 Wandsworth High St SW18. Names to Branch Contact by

Thu 1 December. - **Sat 17** (11am) Branch mail-out session.

Priory Arms (upstairs room), 83 Lansdowne Way, South

Lambeth SW8. - **Tue 27** Joint social with W London: (6.30-

7pm) White Horse, 1 Parsons Green; (8pm) Duke on the

Green, 235 New Kings Rd, Parsons Green; (9pm) Bricklayers

Arms, 32 Waterman St, Putney SW15; (10pm) Old Spotted

Horse, 122 Putney High St.

**January – Sun 8** (12.15) Branch/Cttee mtg, followed (approx

1 pm) by GBG deletion and short-listing mtg. Sultan, 78

Norman Rd, South Wimbledon SW19. - **Mon 23** (8pm)

Battersea Beer Festival planning mtg. Rose & Crown, 55

Wimbledon High St SW19. - **Mon 30** (7pm) Battersea Beer

Festival publicity crawl. Rose & Crown, 2 The Polygon,

Clapham SW4.

Website: [www.swlcamra.org.uk](http://www.swlcamra.org.uk)

**WATFORD & DISTRICT** Andrew Vaughan 01923 230104, 07854 988152 (M), [branch@watfordcamra.org.uk](mailto:branch@watfordcamra.org.uk)

**December – Wed 7** (8.30) Club social. Watford Town & Country Club, Rosslyn Rd, Watford. This is a members' club and visitors may need to be signed in. - **Thu 15** (8pm) Talk by the Watford Museum on the Pubs of Watford High Street. Watford Museum, Lower High St. Everyone welcome.

**January – Thu 5** (8.15) Open cttee mtg. Estcourt Arms, Watford. - **Fri 20** Pre-Xmas pub crawl around London EC1: Start (6pm) Hand & Shears, Middle St. Contact branch or see upcoming details on our website. - **Thu 26** (8.30) Social. Swan, Bushey. - **Mon 30** (8.15) Open cttee mtg. Estcourt Arms, Watford.

Website: [www.watfordcamra.org.uk](http://www.watfordcamra.org.uk)

**WEST LONDON** Alasdair Boyd (Social Secretary) 020 7930

9871 ext 143 (9am-2.45/6pm-9.30 Mon-Fri or leave message),

[banqueting@ncl.org.uk](mailto:banqueting@ncl.org.uk) Fax 020-7839 4768. Branch Contact

Kim Martin 07915 383029, [kimberlymartin@yahoo.com](mailto:kimberlymartin@yahoo.com)

**December – Mon 5** (7pm) West London Beer Fest 2007 inaugural planning mtg. Carpenter's Arms (upstairs), 12

Seymour Pl, W1. - **Tue 6** (7.30) Social. Victoria, 10A Strathearn

Pl, W2. - **Mon 12** (7 for 7.30) Branch Xmas Party. Function

Room Wenlock Arms, 26 Wenlock Rd, N1. Tkt £10 (£5

deposit required with SAE to A. Boyd, Flat 1, Vincent House,

Regency Street, London SW1P 4BX). - **Thu 15** Joint social

with Richmond & Hounslow Branch. See above. - **Mon 19**

SW1 Belgravia social: (7.30) Fox & Hounds, 29 Passmore St;

(8.30) Duke of Wellington, 63 Eaton Terr; (9.30) Antelope, 22

Eaton Terr. - **Tue 20** (7.30) Branch mtg and 2007 GBG

selection. Upstairs Room, Harp, 47 Chandos Pl, W1. - **Tue 27**

Joint social with SW Branch. See above.

**January – Mon 9** W1 Mayfair social: (7.30) Running Footman,

5 Charles St; (8.45) Coach & Horses, 5 Hill St. - **Tue 10** W9

Social: (7.30-9pm) Chippenham, 207 Shirland Rd; (10pm)

Prince Alfred, 5A Formosa St. - **Sun 15** WC2 Covent Garden

tour: (3.15) Marquis of Anglesea, 38 Bow St; (5.15) Lamb &

Flag, 33 Rose St; (10.30) Bear & Staff, 11 Bear St. - **Tue 17**

(7.30) Branch mtg and 2007 GBG selections. Coach & Horses,

5 Hill St, W1. - **Fri 20** (7pm) Darts social with ELAC Branch.

One Tun, 58b Goodge St, W1. - **Mon 23** (7.30) Edgar Wallace,

40 Essex St; (8.45) Cheshire, 5 Little Essex St; (9.30)

Wellington, 351 Strand; (10.15) Coach & Horses, 4 Wellington

St, WC2.

**WEST MIDDLESEX** David Bender 07734 509111 or

[contact@westmiddx-camra.org.uk](mailto:contact@westmiddx-camra.org.uk)

**December – Fri 2** (8pm) *London Drinker* pick up. Magpie &

Crown, High St, Brentford, then (9.30) Fox, Green Lanes,

Hanwell. - **Wed 14** (8pm) CAMRA London Club of the Year

Presentation. Questors Grapevine Bar, Mattock La, Ealing. -

**Sat 17** (7pm) Christmas Party. West London Trades Union

Club, High St, Acton. Membership Card Required. -

**Wed 28** (8pm) Out of Branch social. Land of Liberty, Peace &

Plenty, Long La, Heronsgate.

**January – Thu 5** Greenford two pub social: (8pm) Black

Horse, Oldfield La North; (9.30) Bridge Hotel, Western Ave. -

**Wed 11** (8.30) Mtg. Queens Head, Windsor St, Uxbridge. -

**Thu 19** (8pm) 15 year GBG Award & social. Red Lion, St.

Mary's Rd, Ealing. - **Tue 24** (8pm) Stout & Porter social.

Botwell Inn, Coldharbour La, Hayes. - **Fri 27** (8pm) *London*

*Drinker* pick up. Magpie & Crown, High St, Brentford, then

(9.30) Fox, Green Lanes, Hanwell. - **Mon 30** (8pm) 10 Year

GBG Award & social. Load of Hay, Villier St, Uxbridge.

Website: [www.westmiddx-camra.org.uk](http://www.westmiddx-camra.org.uk)

Electronic copy deadline for the February/March 2006 edition: 11th January 2006. Please send entries to [geoff@coherent-tech.co.uk](mailto:geoff@coherent-tech.co.uk).



# THE BITTER END

139 Masons Hill, Bromley  
Tel: 020 8466 6083

107 Camden Road, Tunbridge Wells  
Tel: 01892 522918

## *REAL ALE* *AT HOME FOR* *CHRISTMAS*

**Beers from over 300 breweries**

**Minipins** (18 pints) fresh for up to 3 weeks...from **£30.00**

**Polypins** (36 pints) fresh for up to 4 weeks...from **£59.00**

**Firkins** (72 pints) ideal for larger parties.....from **£99.00**

**Real Ale** and **Real Cider** also sold by the pint in smaller containers for take home same day drinking.

An extensive collection of bottled beers world wide.

**IDEAL CHRISTMAS GIFT**

**DELIVERY OF MINI / POLYPINS ANYWHERE**

**IN UK (mainland) p&p £10.00**

# CAPITAL PUBCHECK - UPDATE 186

The aim of 'Capital Pubcheck' is to share information about the latest happenings on the London pub scene including new pub and bar openings, name changes, acquisitions, closures, notable changes to beer ranges etc.

Information is gathered from a variety of sources including London Drinker readers, individual CAMRA members and branch contacts, breweries, pub operators, landlords etc. If you would like to contribute to 'Pubcheck' please send your news to the address below.

The big news this time is the opening of a brand new brewpub in SE1 Borough, dispensing real ale. More good news is that Sam Smith's have reinstated real ale in one of their fizz pubs in SW1 Westminster. The bad news is that the opportunity has not been taken to do the same at a recently reopened and refurbished Sam Smith's pub in WC1 Bloomsbury. Both are traditional pubs with a strong beer following. We report on a small, discreet and amiable free house with real ale discovered in SW6 Parsons Green and a bar and restaurant specializing in draught cider and perry in SW1 Pimlico. There has been a slow but welcome reinstatement of real ale in a few discerning pubs across London. More pubs have been converted to restaurants, particularly in Central London, including a prominent Laurel pub in EC4. Two

large Beefeater pub/restaurants on main trunk roads have been run down and closed in suburban South East London, with an eye on their redevelopment value as housing sites, despite a lack of pubs generally in the surrounding areas.

Some errors and omissions in the recent West London Pub Guide are also noted.

Cross references to CAMRA's various pub guides covering Greater London are provided to enable easy updating. The numbers in brackets after each entry refer to the page numbers in the following guides: E - East London & City Beer Guide, 3rd edition; H - Hertfordshire Guide to Real Ale, 2000 edition; HB - Holborn & Bloomsbury Pub Guide; IS - N1 Islington Real Ale Guide; K - Guide to Kent Pubs, 10th edition; 8K - Real Ale Guide to Kent Pubs, 8th edition; KT - Kingston Pub Guide; N - North London Beer Guide, 3rd edition; SE - South East London Pub Guide, 4th edition; 3SE - South East London Pub Guide, 3rd edition; SW - South West London Pub Guide, 2nd edition; W - West London Pub Guide, 2nd edition; X - Essex Beer Guide, 9th edition.

If you would like to report changes to pubs or beers, please write to: Capital Pubcheck, 2 Sandtoft Road, London SE7 7LR or e-mail: capitalpubcheck@hotmail.com.

## NEW & REOPENED PUBS & PUBS CONVERTED TO REAL ALE

### CENTRAL

EC1, BAR 170, 243 Old St. Renamed **BAR RIA**. Young; Bitter. Formerly CROSBY HEAD. (E14, U97, U174)

EC1, DRY BAR, 13-17 Long Lane. No real ale. Free House/bar. Formerly CITY SLICKERS but not previously reported. Currently closed.

EC4, BELL, BOOK & CANDLE, 42 Ludgate Hill. Reverted to OLDE LONDON (YE). Adnams: Bitter, Broadside; Greene King; IPA; Marston: Pedigree; Wells: Bombardier. A reinstatement of real ale and traditional décor, with good riddance to the dreadful 'Eerie Pub Co' horror theme. Now Spirit, ex-S&N. Bars on ground floor and in basement. (E50, U162)

EC4, SPORTS ACADEMY, 28 King William St. Renamed DIZZYS. Fuller: London Pride. Fitted out with bare floorboards and sofas. Ground floor only, kitchen now in basement. Opens 11-11 Mon-Fri only. Formerly BULL, BEAR & BANKER. Note correct address. (E46, U130)

WC1, CROWN, 51 New Oxford St. No real ale. Reopened by Sam Smith's in July after refurbishment in a very traditional style with wood panelling and furnishings etc. Incredibly, the opportunity has not been taken to reinstall the handpumps removed in 1990 during the great Sam Smith's purge of real ale from its London estate. Sadly, Sam Smith's OBB is only available in keg form, despite the high preponderance of bitter drinkers. Come on, Sam Smith's, how about offering some real choice. (W18)

WC1, SPORTSMANS BAR, President Hotel, Guilford St. No real ale. Free House/bar attached to hotel to left of foyer. The only hotel bar in the Imperial Hotel chain not offering real ale.

### NORTH

N1, KING CHARLES 1, 57 Northdown St. Adnams: Bitter; Caledonian: Deuchars IPA. Reinstatement of real ale. Formerly CRAIG HOUSE and CHARLES THE FIRST. (N39, U137, U184, U185)

N10, GREEN MAN, 56 Muswell Rd. Reopened and renamed HILL (THE). No real ale. Now a bar and restaurant. (N103, U157, U182)

ENFIELD (EN1), FORM, 7 Genotin Rd. No real ale. Free House/bar opened in early 2005 in former shop premises.

ENFIELD EAST (EN3), TURKEY, 3 Turkey St. Greene King: IPA. (N242)

### NORTH WEST

NW1, CROWDALE, 10 Ferdinand St. No real ale. Reopened

some time ago and thankfully not developed for flats as apparently intended. (N164, U168)

NW1, MINT, 18 Kentish Town Rd. No real ale. A Free House/bar not previously reported and now renamed **G LOUNGE**.

NW5, TORRIANO, 140 Leighton Rd Rd. Fuller: London Pride. Reopened as a pub and not converted to flats as erroneously reported in Update 153. (N200, U153).

### SOUTH EAST

SE1, BAR 242, 242 Blackfriars Rd. No real ale. Free House/basement bar up ramp under railway arch near Southwark St junction.

SE1, BREW WHARF, Brew Wharf Yard, Stoney St. Brew Wharf: Bitter (3.6%), Best (4.2%), both at £2.80 a pint. New brewpub and restaurant opened in September by a small local pub and restaurant group in three interconnected railway arches, previously used as part of the adjacent Vinopolis World of Wine tour and close to Borough Market and the Market Porter pub. Large French windows along frontage, and heated outdoor drinking area at front. Steps lead from the entrance down to the bar area with white tiled flooring, exposed brickwork and simple wooden chairs and tables. The second arch contains a viewable 'cellar' behind a screen, and open kitchen (shared with Wine Wharf next door) and the third offers views of the brewing equipment (1.5 hectolitre capacity), behind a glass screen and is used as a restaurant area. The brewing team of David Smith and Iain Peebles use Fuggles hops in the bitter and Goldings in the Best and seasonal brews are planned. Meantime Brewery keg beers including Pilsner, Union, Raspberry, Wheat and Kolsch are dispensed from founts and Meantime and quality foreign bottled beers from Belgium, USA, etc. are available. Optional table service. Alsace style food. Meals 11-3, 6-10.30. Can be hired for private functions. Open 11-11 Mon-Sat, 12-4 Sun. A welcome addition to the London beer scene, being the fourth brewpub in the whole of Greater London and the only one brewing cask conditioned beers.

SE1, FESTIVAL SQUARE, Royal Festival Hall, Belvedere Rd. No real ale. Free House/bar and restaurant with entrance at rear of Hall.

SE1, FOYER BAR, Queen Elizabeth Hall, Belvedere Rd. No real ale. Free House/bar and cafeteria.

SE1, SKINKERS, 42 Tooley St. Davy's Ordinary Bitter (4.0%), Old Wallop (4.8%) - believed to be Courage Best Bitter and Directors. Traditionally decorated Davys Free House/wine bar and restaurant now dispensing real ale through silver handpumps. Sawdust sprinkled floors, barrel tables, cabinets and pictures on walls, chandelier lighting and wooden beams. Separate restaurant and eating areas. Open 11-11 Mon-Fri.

SE1, TALL HOUSE, 134 Southwark St. No real ale. Free House/bar and oriental restaurant.

PURLEY, JOLLY FARMERS, 7 Purley Rd. Adnams: Bitter;

# CAPITAL PUBCHECK - UPDATE 186

Greene King: IPA: Shepherd Neame: Spitfire. Reinstatement of real ale. (3SE268, U48, U120, U185)

## SOUTH WEST

**SW1(P), CHIMES**, 26 Churton St. No real ale but varying range of traditional ciders and perries on handpump and draught from the cellar, e.g. Biddenden Draught Extra Dry, Chimes Medium Dry Traditional and Westons Old Rosie Dry Scrumpy sold in half pints only. Small traditional bar with bare floorboards, pews and tables, white décor, potted plants and clocks. Country wines, bottled beers and food service. In CAMRA's new 'Good Cider Guide'. Open 12-2.30, 5.30-10.15 Mon-Sat; 12-3, 5.30-10 Sun.

**SW1(P), HESPERIA LONDON VICTORIA HOTEL BAR**, 2 Bridge Place. No real ale. A Free House/bar attached to hotel with additional separate entrance to street.

**SW1(W), CARDINAL**, 23 Frances St. Samuel Smith: Old Brewery Bitter. Yes, miracles do sometimes happen and Sam Smith's have reinstated handpumps and real ale in one of their London fizz pubs! The handpumps were removed upon acquisition of the pub by Sam Smith's in 1996, despite it having previously sold a range of ales and having appeared in the Good Beer Guide. Real ale is entirely appropriate in this traditional, wood-panelled, popular local and Sam Smith's are to be congratulated for recognising the potential and offering the choice. We hope this enlightened policy might spread to their other 15 or more fizz pubs in Greater London, but the lack of handpumps in the recently reopened Crown in WC1 (see above) does not bode well. (SW47)

**SW6, ARAGON HOUSE**, 247 New Kings Rd. Hogs Back TEA; varying guest beer (currently McMullen: Country Bitter). A Free House/bar and grill opened in 2002 in premises owned and operated by the Royal British Legion Club next door and formerly a function room. Approached through iron gates along a short path through a patio area, the entrance door appears to be that of a private dwelling with minimal external signage. Homely furnishings, with quarry tiled flooring, cream and yellow décor, leather chairs and sofas, polished wooden furnishing, etc. Garden bar in secluded garden at rear for barbecues. Lunches 12-3 Mon-Fri, brunch from 12 noon Sat/Sun. Open all existing permitted hours, over 21s only and no dogs.

**SW17, LITTLE HOUSE**, 13 Tooting Grove. Greene King: Abbot Ale. Formerly QUEEN VICTORIA. (SW110, U181, U184)

**SW19, VENUS BAR AND BRASSERIE**, 12-14 Christchurch Rd. No real ale. Free House/bar and brasserie in former shop unit near Colliers Wood tube station.

## WEST

**W9, CHIPPENHAM**, 207 Shirland Ave. Greene King: Morland Old Speckled Hen. Accommodation upstairs. Open all existing permitted hours. (W114)

**W9 SKIDDAW**, 46 Chippenhams Rd. Adnams: Bitter; Taylor: Landlord; Guest beer (e.g. Greene King: IPA). Now a gastropub, retaining wood panelling, stained glass windows and a lounging area at rear. Kitchen open to view. (W115).

## PUBS CLOSED OR CEASED SELLING REAL ALE

## CENTRAL

**EC1, LIQUID LAB**, Free, converted to Indian restaurant. (U164)

**EC1, PAVILION**, Free (Porter Black). Renamed NYLON and H removed by mid 2005 and now converted to 'Rocco' Italian restaurant. Formerly POETS CORNER. (U130, U156, U168)

**EC2, THREE CROWNS**, Greene King. Delete reference in U179 to conversion to medical centre – the pub remained in the basement. However, now closed and absorbed in a construction site. (E36, U179)

**EC4, HOG'S HEAD**, 12 Ludgate Circus, Laurel (ex-Whitbread), converted to 'Leon' restaurant. Formerly HOGSHEAD and originally OLD KING LUD. The loss of yet another famous

London pub on a prominent site, once the flagship of the Whitbread estate. (E52, U83, U162, U172) (W32)

## EAST

**E7, EAGLE**. Reverted to EAGLE & CHILD, ex-Taylor Walker, closed, planning application submitted for redevelopment for flats. (E107, U70, U79, U185)

**WOODFORD GREEN, WOODMAN**, ex-Watney and then Intreprenure, closed and awaiting redevelopment for flats. Was renamed BEDROCK for a while. (X132, U175)

## NORTH

**N1, WATERSIDE INN**, ex-Whitbread, now demolished to make way for a pure leisure development. The loss of a relatively new canalside pub. (N61, U181)

**N9, PYMMES PARK INN**, now Enterprise, ex-Whitbread, closed and boarded up. (N100, U158)

**N11, TURRETTS**, ex-Courage, now being demolished. Formerly GROVE INN and KITES CAFÉ BAR AT THE TURRETTS (N107, U109, U110, U170, U182)

**N15, CONNAUGHT TAVERN**, ex-Taylor Walker, closed and rumoured to be being converted to housing. (N123, U165)

**ENFIELD EAST (EN3), DELANEYS**, Free, converted to a Turkish restaurant. (U160)

**ENFIELD EAST (EN3), ENTERTAINER**. Aveybur Taverns, closed and boarded up. Formerly PRINCE OF WALES. (N241, U134, U166, U175)

**ENFIELD EAST (EN3), ROSE & CROWN**, Enterprise, ex-Whitbread, closed and boarded up. (N242, U162)

## NORTH WEST

**NW1, LION & LAMB**, Phoenix, now converted to flats. (N169, U112, U164)

**NW1, ST MARTINS TAVERN**, Free, closed and for sale. (N175)

## SOUTH EAST

**SE1, STUDIO 6**, Free, H removed. (SE35, U102, U150)

**SE3, FLAME BAR**, Free, converted to 'Kathmandu' Nepalese and Indian restaurant. (U166)

**SE6, GREEN MAN**, Whitbread (Beefeater), planning application for redevelopment for housing submitted following fire damage. Some doubt about listed status. (SE68, U184)

**SE9, WELCOME INN**, Whitbread (Beefeater), closed and boarded up, future uncertain for this large, prominent building on the South Circular Road serving a wide residential area bereft of any other pubs. Reputedly hosted Status Quo's first gig. (SE88, U102)

**CROYDON, BAR MED**, ex-SFI, closed pending outcome of bankruptcy proceedings. (U156)

**CROYDON, HARE & HOUNDS**, ex-Taylor Walker, H unused but possibility of reintroducing real ale. (3SE243)

**CROYDON, LITTEN TREE**, ex-SFI, closed pending outcome of bankruptcy proceedings. (U153)

## SOUTH WEST

**SW1(P), DOLPHIN**, ex-Shepherd Neame, still closed and boarded up. (SW40, U157)

**SW6, JOLLY BREWERS**, ex-Bass, closed, boarded up and sold for development. (SW68)

**SW12, PRINCE OF WALES**, Ascot Estates, H unused. (SW93, U170)

**SW16, P O (YE OLDE)**, Free, premises now partly converted to 'Illusions' night club and partly to 'Take 2wo' Caribbean restaurant with no draught beer. Delete from pub database. Formerly SOCCERS BAR. (U131, U142)

# CAPITAL PUBCHECK - UPDATE 186

**SW17, HOLLYWOOD BAR**, Free, now converted to a printing shop. Formerly SPINDLES. (SW110, U147, U157)  
**SW17, PITCHER & PIANO**, Wolves & Dudley, closed. (U149)  
**SW18, TONSLEY TUP**. Reverted to **ROYAL STANDARD**, Massive, H removed. (SW114, U144, U157)  
**SURBITON, LAMB**, Free, closed, future uncertain. (SW161, U135, U144, KT42)  
**WALLINGTON, MERRY GO ROUND**, ex-S&N, now converted to shop. (SW126)

## WEST

**W4, ALL BAR ONE**, M&B, H removed. (W86)  
**TWICKENHAM, UP N UNDER**, Free, H removed. Now a gastropub. (W205)

## OTHER CHANGES TO PUBS & BEER RANGES

### CENTRAL

**EC2, HELL**. Renamed **BAR MUSIC HALL**. (U185)  
**EC4, WALKABOUT**. Renamed **ALIBI**. Formerly **OLD COBBLEERS, CROWN & ANCHOR, FLEETS** and **SPATZ**. (E54, U69, U118, U161, U174)  
**WC1, QUEENS LARDER**, -beers listed except Greene King: Abbot, seasonal beer. Guest beers removed and now operated fully by Greene King. (N30, HB13, W25)  
**W1 (S), MAI TAI BAR**. Renamed **SIROCCO**, still no real ale. (W67)

### EAST

**E7, PRINCESS ALICE**. Renamed **BAR MONASTERY**. (E108, U164)

## NORTH

**N1, BAR & DINING HOUSE**. Renamed **WINCHESTER**, still no real ale. Formerly **FW'S, FINNEGANS WAKE** and **MARKET TAVERN**. (N51, U109, U152, U157, U181)  
**N1, CENTURIA**. Renamed **BASTILLE**, H still unused. Formerly **NEW CROWN**. (N53, U121, U184)  
**N1, SHAWS**. Renamed **KINGS CROWN PUB** but remains closed and to let. (N57, U174)  
**N2, CLISSOLD ARMS**, -Courage: Directors; +Wells: Bombardier; +Young: Bitter. Conservatory added. (N65, U137)  
**N2, FIVE BELLS**, -Fuller: London Pride; +Marston: Pedigree. Refurbished in modern style and now operated by Orchard Inns, formerly **Spirit** – John Barras. Play area removed. (N66, U106, U174, U181)  
**N6, ROSES ALE HOUSE**. Renamed **HIGHGATE INN**, -beers listed; +Adnams: Bitter. Refurbished and under new management. Thai food. Formerly **BLACK ROSE**. (N81, U120)  
**NEW BARNET (EN4), BELL & BUCK**, -Draught Bass; +Fuller: London Pride; +Greene King: IPA. Formerly **BAILEY**, originally **WARWICK HOTEL**. (N247, U157, H83, U182, U185)  
**NEW BARNET (EN5), WISHING WELL**. Renamed **STABLE**. Formerly **FIDDLERS** and **LYTTON ARMS**. (N251, H84, U157, U160, U165)

## NORTH WEST

**NW1, CAMDEN BREWING CO**. Reverted to **CAMDEN ARMS**, -beers listed; +Harvey: Best Bitter. (N162, U132, U175)  
**NW1, WINDSOR CASTLE**. Recent guest beers include Orkney: Dark Island and Fuller: Discovery. (N177, U131, U144, U156, U184)  
**NW3, ROEBUCK**, -beers listed; +Greene King: IPA. Trendy, upmarket, modern refurbishment. (N189, U175)

## APPLICATION TO JOIN CAMRA

I/We wish to become members of the Campaign for Real Ale Limited and agree to abide by the Memorandum and Articles of Association of the Campaign.

Name(s) \_\_\_\_\_

Address \_\_\_\_\_

Postcode \_\_\_\_\_

Signature \_\_\_\_\_ Date \_\_\_\_\_



**CAMPAIGN  
FOR  
REAL ALE**

I/We enclose the remittance for individual/joint membership.

	Individual Annual		Joint Annual		Individual Life		Joint Life	
UK and EEC	£18	<input type="checkbox"/>	£21	<input type="checkbox"/>	£325	<input type="checkbox"/>	£378	<input type="checkbox"/>
Rest of the World	£22	<input type="checkbox"/>	£25	<input type="checkbox"/>	£396	<input type="checkbox"/>	£450	<input type="checkbox"/>
Under age 26	£10	<input type="checkbox"/>						
Unemployed/Disabled	£10	<input type="checkbox"/>	Date of birth _____					
OAP	£10	<input type="checkbox"/>	£13	<input type="checkbox"/>	£180	<input type="checkbox"/>	£234	<input type="checkbox"/>

Send your remittance (payable to CAMRA Ltd) to:  
 Membership Secretary, CAMRA Ltd, 230 Hatfield Road, St Albans, Herts AL1 4LW

# CAPITAL PUBCHECK - UPDATE 186

**NW4, AN PONTIN STILL.** Renamed **GALLERY**, a bar and restaurant run by John Kelly Leisure. (U120)  
**NW6, INN ON THE GREEN.** Renamed **DOG & 6 STORIES**, still no real ale. Former S&N pub and now believed to be owned by a development company seeking redevelopment for flats. The name reputedly refers to locals' campaign to restrict development to six storeys in height. Formerly **FINNEGANS WAKE**, originally **PRINCE OF WALES**. (N205, U146, U174)

## SOUTH EAST

**SE1, MBIBE.** Should read **IMBIBE** (correction to U153). Formerly **BABUSHKA**. (SE10, U102, U153)  
**SE1, ROEBUCK.** -beers listed; +Marston: Pedigree (£2.70 a pint). Refurbished, light and airy, some leather chesterfields. Food. Live jazz on Sundays. Function room available. (SE31, U159)  
**SE13, JORDAN.** Reverted to **JOLLY FARMERS**, -beers listed. Retains varying guest beers on H and direct from air-cooled casks behind bar inherited from Hogshead days, e.g. Skinners and Ringwood beers. Now Enterprise, ex-Laurel. Formerly **HOGSHEAD**. (SE120, U165)  
**SE14, HATCHAM ARMS.** Renamed **DOWN THE HATCH**. (SE127, U158)  
**BEXLEY, BLUE ANCHOR.** Now Spirit, ex-S&N. (3SE208, U107, K32)  
**BROMLEY, TOWN HOUSE.** Reverted to **GREYHOUND**, still no real ale. (3SE218, U86, U158)  
**CROYDON, BARELLES.** Renamed **GRADISCA**, still no real ale. (U181)

## SOUTH WEST

**SW1(W), FINNEGANS WAKE** Renamed **STRUTTON ARMS**, -beers listed; +Adnams: Broadside; +Wells: Bombardier; +Young:

Bitter. Now Spirit, ex-S&N. (SW48)

**SW1(W), SPEAKER.** -beers listed except Young: Bitter; +Shepherd Neame: Bitter; +Guest beers (e.g. Battersea and Grand Union beers). Now Enterprise, ex-Unique. Formerly **ELEPHANT & CASTLE**. (SW48, U137, U142, U176)

**SW12, BEDFORD.** -beers listed; +Courage: Best Bitter; +Fuller: London Pride; +Wadworth: 6X; +Young: Bitter. Now operated by Onifas, ex-Intreprenuer. (SW91)

**SW12, BLITHE SPIRIT.** -beers listed; +Marston: Pedigree. Now Wolves & Dudley (Pathfinder Inns), ex-Wizard. Formerly **ECLIPSE**. (U124, U146, U159, U168, U174)

**SW17, FROG & FORGET-ME-NOT.** Reverted to **SELKIRK**, -beers listed except Fuller: London Pride. Re-furnished in contemporary style with leather sofas and high-backed settles. (SW110, U144, U163, U174)

**SW17, KINGS HEAD.** -Wells: Bombardier; +Caledonian: Deuchars IPA; +Fuller: London Pride; +guest beer. (SW109, U142, U151, U157, U169)

**SW17, WHITE LION.** +Young: Bitter. (SW110, U142)

## CORRECTIONS TO UPDATE 185

### NEW PUBS ETC

**PURLEY, ELLIOTS.** Is a Free House.

**PURLEY, RECTORY.** Opened in former shop premises.

### PUBS CLOSED ETC

**BELVEDERE, ROYAL STANDARD.** Add ref: (3SE207).

**BEXLEYHEATH, KINGS ARMS.** Add ref: (3SE212).

### OTHER CHANGES ETC

**W1 (S), MOON & SIXPENCE.** Ref should read (W67).

# Pakenham Arms

1 Pakenham Street, London WC1X 0LA

Tel: 020 7837 6933

Email: [enquiries@pakenhamarms.com](mailto:enquiries@pakenhamarms.com)



*The Pakenham Arms, a genuine free house offering at least six traditional ales.*

*A locals' favourite and a real jewel for those who discover it. Shortly to have a spruce up, to ensure you have an even nicer environment in which to drink some of London's best-kept ales. Home-cooking and friendly service abound... All you could wish for in a freehouse pub!*

# The 'All New' Narrowboat

St Peter Street, London N1



...a unique canal-side pub introducing real  
ales to the heart of Islington

---

Serving Fuller's London Pride,  
Adnams Best & Broadside

---

Two Bars including the Towpath Bar  
Function Room/Bar available

---

For more information telephone:

**020 7288 0572**



*A genuine Free House featuring a selection of the very best in Cask Ales, Traditional Cider and Perry*

- Mild always available
- Liefmans Kriek & Bitburger Pils both on draught
- Wide selection of continental bottled including Duvel and Chimay
- Function room free to CAMRA members
- Thursday night is Quiz Night
- Jazz piano Sunday afternoons
- Jazz/Blues every Friday and Saturday evening
- Open daily from midday



**CAMRA  
NORTH LONDON  
PUB OF THE YEAR  
1995, 1996,  
THE MILLENNIUM 2000  
AND 2004**

**26 Wenlock Road  
London N1**

020 7608 3406

Nearest Tube stations are Old Street (exit 1) and Angel. Wenlock Road is off City Road via Windsor Terrace  
<http://www.wenlock-arms.co.uk/>

## CAPITAL PUBCHECK - UPDATE 186

N1, KING EDWARD IV. Should read KING EDWARD VI. N1, HEAD OF STEAM. Delete reference to Holt: Bitter.

EAST BARNET, BAILEY. Should read NEW BARNET. Refs should read (N247, U157, H83, U182, U183).

SE1, RED LION (now CHARLES DICKENS). Open 11.30-11 Mon-Fri, 12-6 Sat and 12-8 Sun.

BELVEDERE, CHEQUERS. Add ref: (3SE206).

BELVEDERE, LEATHER BOTTLE. Add refs: (3SE207, U149).

BELVEDERE, VILLAGE INN. Refs should read (3SE207, K32, U163).

BEXLEYHEATH, POLO. Should read POLO BAR. Add refs: (3SE211, U61, U66).

BEXLEYHEATH, PRINCE ALBERT. Add refs: (3SE212, U59, U127).

BEXLEYHEATH, YACHT. Add refs: (3SE214, U107).

NORTUMBERLAND HEATH (ERITH), ROYAL OAK. Add ref: (3SE256).

SW8, MASON'S ARMS. Should read Jacomb & Guinness (and also for W4, PILOT, W6 STONEMASON'S ARMS and W9 GRAND UNION).

### CORRECTIONS TO WEST LONDON PUB GUIDE

Copies of the new guide reviewed in the last issue, replacing the comprehensive 1989 guide to pubs in the West End, West London postal districts and outer west and north west areas of Greater London, can now be obtained from WLPG, 30 Whitton Road, Hounslow, TW3 2DA, price £5.95 (£4.95 for CAMRA members - quote membership no.) plus 60p p&p, with cheques payable to CAMRA West London Pub Guide.

Corrections and omissions, together with extra archival information, will be documented for reference at [www.londondrinker.org.uk](http://www.londondrinker.org.uk) These include the following (page numbers in brackets):

### MAPS

KEY MAP. Ruislip should read HA4 (not HA3). (6)

MAP 4. Nos 23 and 50 in WC2 should be transposed. (39)

MAP 30. No 5 in West Drayton (Sipson) should read 6; No 6 should read 7 and be a black dot; No 7 should read 8; No 8 should read 5 and be an open circle. (161)

MAP 48. No 2 in West Drayton (Harmondsworth) should be a black dot. (224)

### PUB LISTINGS

WC1, QUEENS HEAD, 66 Acton St. Map ref should read 6-35. (24)

WC1, QUEENS HEAD, 64 Theobalds Rd. Map ref should read 2-21. (25)

WC2, BEAR & STAFF. Formerly Old Kings Head (in 1989). (28)

WC2, BLOOMSBURY. Formerly Bloomsbury Tavern (in 1989). (29)

WC2, O'NEILL'S, 166-170 Shaftesbury Ave. Flyman & Firkin was a brewpub. (36)

WC2, QUEEN MARY. Should read QUEEN MARY (TS). (38)

W1(Mar), AUBERGE. Map ref should read 5-23A. (50)

W1(Mar), INN 1888. Address should read 21A Devonshire Street. (53)

W1(May), FULLERS ALE LODGE. Formerly Yates's Wine Lodge (in 1989). (59)

W1(S), WHITE HORSE, 16 Newburgh St. Map ref should read 1-108. (70)

W1(S), WHITE HORSE, 45 Rupert St. Map ref should read 3-81. (70)

W1(S), ZEBRANO. Formerly Freedom, a Continental style brewpub, equipment now removed. (70)

# CAPITAL PUBCHECK - UPDATE 186

**W2, SHAKESPEARE.** Formerly Piers (in 1989). (78)

**W2, TOUCH.** Formerly Kings Arms (in 1989). (80)

**W6, RAVEN.** Owner should read Trust Inns. (104)

**HAMPTON, WORLDS END.** Complete entry omitted in error. (145):

**WORLDS END**

88 Station Rd, TW12 2AX

(020) 8979 3073

Free

11-11; 12-10.30 Sun

**Draught Bass, Fuller's London Pride**

Welcoming independently run single bar pub on Hampton's shopping street, mainly regular trade. Family area (until 7pm).

Outdoor drinking area. Lunchtime meals. Near Hampton railway station.

**HARROW MATRIX.** Formerly Farmers (in 1989). Originally Tithe Farm House. (154)

**HOUNSLOW, ROYAL ALBION (JALANDAR).** Should read (JALANDHAR). (170)

**PINNER.** Heading should read 'Includes Eastcote and Hatch End'. (179)

**TEDDINGTON, PARK.** Formerly Clarence Hotel (in 1989). (196)

**TWICKENHAM.** Heading should read 'Includes St Margarets and Whittton'. (200)

**WEST DRAYTON, CALLAGHANS.** Formerly Captains Bar and Brunel Bar (in 1989). (222)

## BEERS & BREWERIES

Two entries omitted in error:-

**BUNKER**

Bunker, 41 Earlham St, London WC2H 9LX

Continental style brewpub with no cask conditioned beers. (228)

**MASH**

Mash Ltd, 19/21 Great Portland St, London W1W 8QB

Continental style brewpub with no cask conditioned beers. (230)

## PLACE NAME INDEX

Hatch End, Pinner should read Hatch End, Pinner or Wealdstone, and pages 135 or 216. (252)

Hayes. Add Map 34. (252)

St Margarets, Twickenham. Delete map refs shown, add Map 33. (252)

# CASK MARQUE AWARDS

Formed in 1997, Cask Marque is an independent accreditation scheme jointly funded by participating brewers and retailers, which recognises excellence in the service of cask ale. The award is made not to the pub but to the licensee, who has to pass two unannounced inspections with assessors sampling up to six beers checking temperature, appearance, aroma and taste. Further inspections are made twice a year, with additional random inspections triggered by customer comment.

## ADDITIONS

New Cask Marque awards to licensees of pubs in Greater London notified since September are listed below.

### SOUTH EAST

**BEXLEY, BLUE ANCHOR,** Bridgen Rd. Spirit. (3SE208, U107, K32, U186)

### SOUTH WEST

**SW6, SOUTHERN CROSS,** 65 New Kings Rd. Greene King. (SW71)

**SW11, WOODMAN,** 60 Battersea High St. Hall & Woodhouse. (SW90, U146)

### WEST

**TWICKENHAM, DUKE OF CAMBRIDGE,** Kneller Rd, Whittton. Enterprise. (W202)

## DELETIONS

The following outlets no longer hold the Cask Marque award.

**EC3, HOG'S HEAD,** 25 St Mary Axe

**W1(S), MOON & SIXPENCE**

**ENFIELD WEST (EN2), PLOUGH**

**SE9, OLD POST OFFICE**

**W4, ALL BAR ONE**

Over 3,150 licensees have the Cask Marque award. The beer in their outlets has been independently inspected for beer quality.

Visit the Cask Marque Website  
[www.cask-marque.co.uk](http://www.cask-marque.co.uk) and download a regional guide. Why not visit a brewery?

[www.visitabrewery.co.uk](http://www.visitabrewery.co.uk)

Cask Marque - for the licensee who serves the 'perfect pint' of cask beer.

**The Cask Marque Trust,  
Seedbed Centre, Severalls  
Park, Colchester, Essex  
CO4 9HT  
Tel: 01206 752212**



# LONDON FOR FREE - MORE POUNDS TO SPEND ON BEER

## ART FOR YOUR SAKE

England has some of the finest art galleries in the world, and what's best, the permanent collections are now free to the public. National treasures are accessible to all, so plan a day for art - for your sake.

**Tate Britain** (Millbank, SW1; Pimlico Tube; 020 7887 8008; [www.tate.org.uk](http://www.tate.org.uk)) contains works of British art from 1500-2004, while Tate Modern, also located on the Thames and accessible by a boat trip titled 'Tate to Tate' (free), houses modern and contemporary art. Take your choice, or visit both for your day out. Special exhibits are constantly changing, and a fee may be charged for these, but the permanent collections are free to the visitor. My choice was to view the British collection, so I headed for Millbank. The Tate Britain, formerly the Tate Gallery, has been reorganized into logical groupings. A free floor plan is available when you first enter, but the high-ceilinged galleries, some of which are air-conditioned, provide the viewer with paintings that heretofore have been viewed solely as images in books or note cards. The paintings are enveloped by intricately beautiful frames, every bit as worthy of study as the works themselves. The gallery entitled

'London: A Modern City' fascinated me. I could pinpoint places I'd walked in London, discovering what they had looked like in earlier times and how the city had changed. In the well-stocked shop at the Tate Britain, I purchased a postcard of one of my favorites from this gallery, William Logdail's *St Martin-in-the-Fields*, a church you'll see when you visit the National Portrait Gallery and the National Gallery. The costumes and the people have changed but the façade of the church has not. That's part of what makes London the great and familiar city it is. My favourite gallery is 'Art and Victorian Society', filled with some of the Pre-Raphaelite paintings I've studied for the past 35 years. The thrill of seeing them firsthand repeats itself constantly.

Other galleries are devoted to 'William Blake & Illustrations', 'William Hogarth', two to 'John Constable', 'Making British History', and 'Aubrey Beardsley & Decadence', among others. Of course, the Turner Bequest and the Turner Collection could keep you busy for at least a day. In addition, a brochure is available in some of the galleries that gives additional information; a copy can be picked up from the information desk.

Check the website for free tours led by the staff and free talks available the day you plan to visit. Something is always going on here. Although you have paid nothing to get into the Tate Britain, make a donation, eat in the café, buy yourself some books and souvenirs from the shop. As the plan states, 'Admission to the Collections displays is free, but donations from visitors continue to support our work. Please give generously'.

Now that you have taken advantage of a spectacular cultural experience, head down the street to a pub for refreshment, or, if you prefer to walk a few blocks, try a second pub. The first is the **Morpeth Arms**, a Young's pub I listed in my article on literary pubs of London (58 Millbank; Pimlico Tube; 020-7834 6442). Always popular, the pub serves well-kept Young's beers, and the food looked decent as well. In good weather, sit outside; in cooler weather, enjoy the large area at the front of the pub. If you want an air-conditioned pub and are willing to walk a few blocks, visit the **White Swan** (14 Vauxhall Bridge Rd, SW1; 020-7821 6568), which is located closer to Pimlico Tube station. A refurbished pub with at least four real ales, serving both tourists and locals, its seating areas make for more privacy and room than in small pubs. If you're adventurous and want to try out another pub, pay it a visit.

Now head for home, confident that you have had a visually pleasing, educational day at Tate Britain, topped off by a visit to a nearby pub.

© 2004 Judith Black

## THE ROYAL OAK



44 TABARD STREET, LONDON SE1

Tel - 020 7357 7173

Traditional Harvey's Sussex Ales  
Served in a Traditional Atmosphere

Open Mon-Fri 11am - 11pm

Food Available  
Lunchtime & Evenings

And now open Saturdays 6pm - 11pm  
also Sundays 12 midday - 6pm  
with traditional Sunday lunches

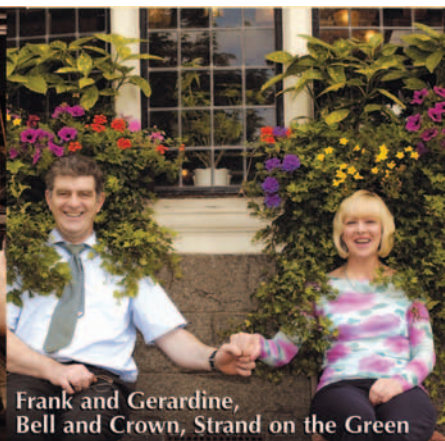
Nearest tube - The Borough



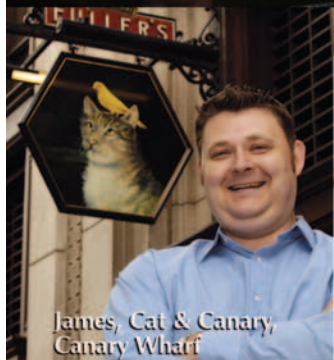
Natasha,  
Barrow Boy & Banker,  
London Bridge



Gerry, Churchill Arms,  
Kensington



Frank and Gerardine,  
Bell and Crown, Strand on the Green



James, Cat & Canary,  
Canary Wharf



Sinead, The Fleetwood,  
Moorgate



TJ & Christine, George & Devonshire,  
Chiswick

## It's not just our beers that are full of character.

Great pubs need great beer. As a London Drinker reader, we are sure you agree with that. But just as customers love a good pint, they enjoy good people too. So at Fuller's, we employ people who are not just passionate about beer, but life as well. Take Gerry. His enthusiasm has seen him through 20 years at the Churchill Arms. He doesn't have regulars, but friends. Because, like all our managers,

he knows that the pub business is a people business. And that humour, friendliness and patience are just as important to our pubs as hops, yeast and barley are to our beers.



# TRAFALGAR, TRAFALGAR

The 200th Anniversary, Nelson's Revenge, Nelson's Delight, England expects - I expected it would be a good 'do', somewhere I'd never been before, a small, narrow, back-street pub five minutes from South Wimbledon tube station, so also not far from the wonderful Sultan.

This is Nelson country, yes, SW19, with Nelson Road, Hardy Road, Hamilton Road, Victory Road, Trafalgar Road and all. Merton was the home of Lord Nelson and Lady Hamilton and there are local pubs with connections: the Nelson Arms, the

Victory (whoops, that one underwent a massive refurbishment and is now the Colliers Tup!) and of course the Trafalgar along High Path.

Adorned with Nelson memorabilia and with the right name for the day, this was the perfect setting to celebrate the anniversary, on the twenty first of October, of one of Britain's greatest heroes. I'd heard about the pub from several people on the Northern Line from North West London.

Arriving at about 7pm, I found that the tiny and intimate pub was already heaving. I bumped into several SW London CAMRA members as I entered and was then asked to move out of the way as an elderly lady, welcomed as Lady Hamilton, made her way past to join the landlord's wife and friends.

Innocently I asked the SW London 'Press Gang' what they suggested I drank. I should have realised this was a stupid question, particularly as amongst them was our editor and his son, Martin, the brewer at the Downton Brewery near Salisbury. "Why, Downton Nelson's Delight, of course!" Well of course, and a splendid golden beer of which I'm sure his Lordship would have been proud.

I managed to get up the gangway to the bar and back to the jolly SW London crew, narrowly avoiding spilling my pint. We didn't realize we were all about to be put at the end of the gang plank by one big pirate chief cum Quiz Master, also called Robin. "Get on with it, Robin!" I did, I had another pint, Gale's Trafalgar 200. Everyone had to enter, not for any prize money but press-ganged once again. Every question had something to do with Nelson - definitely his Revenge and I soon had a pint of Woodforde's. We all thought we were fairly well up on the great Admiral; not a bit of it. I'm glad they didn't read out the scores and you could mark your own answers. Highly entertaining though and we learned quite a bit as we tried to crib from the Nelson and Trafalgar information on the walls.

Then blow me down, or blow the man down, sea shanties were played and the local Morris Men arrived. Two of our crew mutinied and jumped ship, but they missed a most amusing mummies' play parodying the death of Nelson, with Lady Hamilton (no, not the one sitting with the landlady), Hardy, Napoleon and all. And there was even a sword dance, God knows how, in such a small space with us drinking right in front of them. After the play came traditional English folk songs: no Polly on the Shore or Banks of the Nile but I digress.

A wonderful, truly historic evening drinking beers named after Nelson in a pub named after the battle on the very day of the bicentenary of one of the greatest naval victories of all time. Kiss me Hardy 'cos it's hard to believe!

*Robin Forshaw-Wilson*

## Advertise in the next LONDON DRINKER

Our advertising rates are as follows:

Whole page £260 (colour) £220 (mono)

Half page £150 (colour) £110 (mono)

Quarter page £80 (colour) £55 (mono)

Phone Peter Tonge now on

020 8300 7693

*The Charles Dickens*  
FREE HOUSE - BAR & RESTAURANT

**SIX REALE ALES !**

FOR A FULL MENUE, EVENTS AND FUNCTIONS  
CHECK OUR WEBSITE  
[www.TheCharlesDickens.co.uk](http://www.TheCharlesDickens.co.uk)

our Special SUNDAY ROAST

This genuine 'Freehouse' awaits you...  
and offers a 'Warm Welcome'

join THE QUIZ ON WED

160 Union Street  
London SE1 0LH  
Tel: 020 7401 3744  
[www.TheCharlesDickens.co.uk](http://www.TheCharlesDickens.co.uk)

## WETHERSPOON'S BUS TOUR

The JD Wetherspoon chain held another of their excellent beer festivals from Monday 31 October to Sunday 13 November 2005, and on 12 November Ron Andrews and George Ingleby organised a tour of a number of their pubs in the CAMRA East London and City branch outer area. At each one we tried a different pint during an approximate 45 minute stay. What better place to start than a former Pub of the Year, the Drum in Leyton E10. We met before 11am so some took advantage of the breakfast available. Using a £3 bus pass or equivalent for the day, we then caught a 257 to our next JDW pub, the Walnut Tree in Leytonstone E11.

Then on to a W14 to the George in Wanstead E11. This fine building, an ex-Trumans pub, was once a hotel, and Wetherspoons have done a fine job in refurbishment, the first floor being totally non-smoking. Those who had not had breakfast opted for a late lunch before we boarded a 101 to East Ham E6. After a slow progression down the High Street the bus arrived near our next port of call, the Millers Well. Here staff dealt well with a customer who had consumed too much alcohol – I hasten to add not one of our group!

The sun had gone down by the time we left. A 325 took us on a rather circuitous route to the front door of the Hudson Bay, E7. Another pint down and a short walk to the Romford Road and an 86 awaited us round the corner. This took us to Stratford Broadway E15, a familiar location to most of us as

the nearby Old Town Hall had been the home of the now much missed Pigs Ear Festival. Diagonally across the Broadway we entered the Golden Grove where some took an evening meal along with the customary pint.

Up until this point the buses had gone well with never more than a seven minute wait. We intended to get a 158 to the Kings Ford in Chingford E4 but after a 15 minute wait after the advertised time the bus that arrived was on a 'short journey' going no further than Walthamstow. We decided to cut our losses and get a 257 back to the Drum, our starting point some nine hours earlier.

By visiting six different pubs in a day we were able to choose from some 30 of the 50 beers advertised as being available during the festival, among them Rebellion Written Off, Charles Wells Banana Bread (not tried on draught since its launch at the London Drinker Beer Festival a few years ago), Batemans Black Beered, Daleside Blonde, Nethergate Jolly Roger, Elgoods Black Dog and Arkells 3B.

We hope to do a follow up of the Inner East London Postal Area JDW pubs during their next beer festival in the spring of 2006; so watch this space.

*Ron Andrews*

### Real Ale Walks

Imagine a walk in the fantastic unspoilt Somerset countryside to a traditional pub for a pint of Cotleigh, Exmoor or any one of a dozen or so local brews.

*Sound like your idea of paradise?*

Real Ale Walks run all inclusive packages from just £75 per day.

- ◆ 4 diamond en-suite accommodation
- ◆ All meals including pub lunch
- ◆ Free tastings
- ◆ Evening entertainment
- ◆ Fully guided walking

Contact Lynne or Ian on  
01278 732228

or email: [drinker@realalewalks.co.uk](mailto:drinker@realalewalks.co.uk)  
[www.realalewalks.co.uk](http://www.realalewalks.co.uk)



**PUB OF THE YEAR, CAMRA SW LONDON  
2002 GREATER LONDON REGIONAL PUB OF THE YEAR  
VOTED TIME OUT PUB OF THE YEAR**

# The Sultan

78 Norman Road, South Wimbledon, SW19 020 8544 9323  
(off Haydons Road via De Burgh Road)

***The only Hop Back pub in London***

*Come and try our award winning beers*

GFB • Crop Circle • Entire Stout •

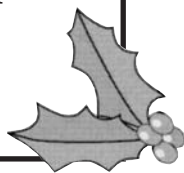
Summer Lightning (award winner) plus guests  
plus bottled Entire Stout, Summer Lightning

& Crop Circle (Gold winner at GBBF)

also available by case £20

Sample our ever-changing Beers of the Month!

**Angie & staff wish all their  
customers a very Happy  
Christmas and New Year**



**Beer orders for Christmas now being taken**  
*36 pint polypins from £50 18 pint minipins from £25*  
(both require minimum 24 hours notice but 48 hours during the Christmas period please)

**Quiz night every Tuesday from 8.30pm**

**Nearest tubes: Colliers Wood or South Wimbledon**  
**Buses: 57, 156, 200**

## A GRAND TOUR OF ALL PUBS IN SE23

**S**E23 is not one of those well known postcodes of London; basically it is an area around Forest Hill somewhere between South Peckham and West Catford, lovely! It is indeed quite residential and surrounded by green spaces. At a local party earlier this year, a few local drinkers were commenting on the different pubs that are in the area and had any one visited them all? No was the answer, so it was decided that we should try and visit all the public houses in our postal area. In the sober light of day there are 12 public houses in existence and one that has been turned into flats, a challenge!

Saturday March 12th dawned bright, sunny and breezy and we met at the **Moore Park Hotel** on Wood Vale. A good start but sadly it is no longer in existence (been turned into flats) but that did not stop us from setting up an impromptu bar, a small piece of wood and a bottle of home brew imperial stout! A Moore Park Hotel sign was erected on a large sheet of paper, then we tried to entice a few locals to join in our ad hoc bar, hmm not much success, never mind. Next stop was the **Chandos** on Brockley Rise, handpumps but no real ale, so bottles of Mann's Brown were consumed while football was shown on the screen. After not lingering long, it was a quick trip across the road to a good back street pub, the **General Napier** on Bovil Road. We gently consumed halves of Greene King IPA in an



## Teddington Arms

38-40 High Street, Teddington TW11 8EW

Tel: 020 8973 1510

Email: [enquiries@teddingtonarms.com](mailto:enquiries@teddingtonarms.com)

*The Teddington Arms, a genuine free house offering traditional ales together with real home-cooking. Extensive wine list with a great range of both classic and new world wines by the glass. A choice of over 20 malt whiskies.*

*The menu serves high quality meat and fish from the chargrill as well as a range of small bites and hot sandwiches.*



# A GRAND TOUR OF ALL PUBS IN SE23

interestingly laid out pub.

Next stop was the **St Germain's** further down on Brockley Rise, a well-known Irish hostelry. It was very lively with a rugby match on many screens featuring Ireland's team. No handpumps so Guinness was the natural thing to consume in this friendly atmosphere. We pressed on to the next pub, the **Blythe Hill Tavern**, a Good Beer Guide entry right on the South Circular, again showing the Irish rugby match was being shown. Cheese and onion toasties accompanied more Guinness, but it is one of the best pints for miles. The Blythe Hill Tavern is one of those pubs you can spend all day in and it is well worth a visit, however time was pressing so off to next one, meeting up with another chap who joined the crawl.

Between two pubs in the district, we had to pass the front door of the **Rutland Arms** which is outside it but, well, if passing why not go in? A lovely pub with jazz and blues music, it has been in the Good Beer Guide in previous years and still offered good selection of hand pump beers. On to the **Prince of Wales**, Perry Rise for a quick half of Bass and then we wind our way in the back streets to the Railway Telegraph on the South Circular. It is a good Shepherd Neame pub where we met some more

drinkers for the crawl, had a decent pint of Sheps and a bit of a long interlude. Then round the corner to the **Forest Hill Hotel** on Stanstead Road, a pub we had not been to before, where we had a quick half before going on to the **Hob**. This is a Wychwood Brewery pub but sadly no longer with any hand pumps. There was a selection of bottled beers, so one quick bottle and it was off to the Wetherspoons across the road.

The **Capitol** is a converted Grade 2 listed cinema on



the South Circular. We stayed for a pint or two along with some welcome food. Next stop was an ex-Wetherspoons, the **Bird in Hand** on Dartmouth Road. After a quick half it was then off to what was known as the Malt Shovel, now renamed as **Q's**, where a selection of Belgian bottled beers could be had in a pub serving pizzas with DJs playing soul music. Tracing our footsteps back, we found the **Dartmouth Arms** now turned into a gastropub, but the welcome sight of a couple of handpumps, including Charles Wells Bombardier.

Under the underpass below the railway and the last pub in the crawl, the **Foresters Arms** on Perry Vale. Recently this pub has been having jazz on Saturday nights, and a excellent three piece was in full swing as we arrived to sample some Bass on hand pump. By this time it's 10 o'clock, so with all the pubs in SE 23 visited, we called it a day. Well two of us decided the better thing to do was to go to the recently announced SE London Pub of the Year, the **Gowlett** in SE15 for an impromptu CAMRA social, but that is another story!

So, in all, 13 pubs were visited in SE 23, and two other pubs - quite an achievement in an afternoon and evening. All of us have discovered one or two pubs that we haven't been to before and will return to in the future.

*Ian White*

## The Hope

1 Bellevue Rd, London SW17 7EG  
020 8672 8717

### 5 cask ales available

from a wide selection including  
Young's Bitter and Deuchars IPA,  
and seasonal guest beers.

## I.P.A. ALE CLUB

### FREE MEMBERSHIP

Fortnightly meetings for members  
with invited breweries making  
monthly visits.

## CHRISTMAS ALE FESTIVAL

1st - 31st December

Featuring 25 Seasonal Ales

CASK MARQUE AWARDED

*THERE IS ALWAYS THE HOPE*

*Into Perfect Ales*

## OUR READERSHIP SURVEY

I would describe the results of the survey we carried out between February and June this year as interesting but not necessarily significant. Who were our respondents? Well, mostly male and mostly over fifty. Of course, the ladies and the younger readers may have more important things to do with their time than fill in surveys, and who can blame them.

Almost everyone thinks *London Drinker* is good campaigning, and 44 of you took out or renewed postal subscriptions. That is encouraging, but then it is surprising that so many people are the *only* reader of their copy. Come on, folks, if it's worth reading, it is worth sharing. Pass it on to a friend or colleague, or just leave it in a friendly pub or on the train or tube.

You seem to like the balance of articles, but the editorial team will read your constructive criticisms carefully. You also suggested lots of ideas for our advertising manager, which I shall pass on.

All in all, it was an educational and valuable exercise; our thanks to you all. My own thanks go to Maurice Grehan without whom I might not have got round to it this year or even next. His help was invaluable. Thanks to CAMRA's marketing group for advice and for formatting the survey sheet, and to our editor who got so exasperated by my going on about

the need for a survey that he told me to go away and do it! Thanks, Geoff: I hope you like the results.

The results of the survey will be tabulated at [www.londonrinker.org.uk](http://www.londonrinker.org.uk). The raw data will be held for a while, in case a real statistician wants to do a proper analysis. I repeat our earlier assurance that respondents' names and addresses will not be used for any other purposes. Finally, congratulations to Tony Hooper of South Ruislip who receives a free copy of the new West London Pub Guide.

*Richard Larkin*

### Advertise in the next LONDON DRINKER

Our advertising rates are as follows:

Whole page £260 (colour) £220 (mono)

Half page £150 (colour) £110 (mono)

Quarter page £80 (colour) £55 (mono)

Phone Peter Tonge now on

020 8300 7693

## Local CAMRA Pub of the Year ...



**The Red Lion**

Linkfield Road, Isleworth

[www.red-lion.info](http://www.red-lion.info)

020 8560 1457

**Wishing You A  
Merry Christmas  
& A Prosperous  
New Year**

**Always A  
Warm Welcome**

**9 Guest Ales**

### BBQ and Pub of the Year presentation at the Orange Tree, Winchmore Hill

The weather was not with us on 13 August; no sooner had we lit the charcoals than the rain started, and it lasted for the rest of the afternoon and evening. But thanks to the gazebos provided by the pub we were able to continue without too many problems. At least it was warm rain!

The sausages and burgers were supplied by the East London Sausage shop of Walthamstow. The former were three from a range of over 30: we had beef, mustard and horseradish; lamb and mint; and Honey roast pork. The burgers were massive six ounce ones so no one went hungry. To wash it down we mainly stayed on the excellent guest ale, Brakspears bitter.

During the course of the afternoon we presented licensees John and Maria with the Pub of the Year certificate. This was determined by a ballot of Enfield and Barnet members collected at many branch events and by post. The Orange Tree has won at least five times.

### Peterborough Beer Festival

On 27 August we met at Potters Bar station, changed at Stevenage and, having negotiated the inner ring road twice and the shopping arcade we eventually saw our goal. The festival is held in three

giant marquees on the grass beside the River Nene. Like last year, the grass was rather damp as there had been heavy rain earlier in the week, but the organisers had coped well with walkways.

Although by Saturday some beers were finished, including Peterboro's own Oakham Brewery stand, there was still plenty of choice of styles and gravities. This festival has an afternoon break and so, before last orders, we moved off to the nearby Charters Bar, an old Dutch grain barge moored up near the town bridge. As it became crowded we returned through the pedestrianised shopping area and continued north for some 20 minutes to the Hand & Heart in Highbury Street.

The only entry for Cambridgeshire in the CAMRA National Inventory of Historic Pub Interiors, it is a two roomed 1930s pub with a hatchway servery into a tiled drinking corridor.

It was well worth the walk. On our return to the town centre and the station we were able to sample the Oakham Ales in their Brewery Tap, along with a Thai meal.

### Hertfordshire ramble

For our fourth ramble in Hertfordshire we started on 3 September from Watton at Stone station (between Hertford North and Stevenage), having



## THE LAND OF LIBERTY, PEACE AND PLENTY FREEHOUSE

**Licensees - CAMRA members Martin & Gill, and staff offer a warm welcome to all**

### Real Ales

Up to 6 Great Beers

### Christmas Buffets in December

**BOOK NOW!**

### Open Christmas Day

Drinks only 12.00 - 3.00pm

- ◆ Lunches every day
- ◆ Sunday roasts
- ◆ Regular events
- ◆ Large car park
- ◆ Dog friendly
- ◆ Over-sized lined glasses
- ◆ Real log fire
- ◆ No under 14's in the bar, sorry

**See [www.landoflibertypub.com](http://www.landoflibertypub.com) for Real Ales on soon and future events.**

**The Land of Liberty, Peace and Plenty, Long Lane, Heronsgate, Hertfordshire WD3 5BS**

**Tel: 01923 282226**

*2/3 mile M25 junction 17. Follow sign to Heronsgate. 1 mile from Chorleywood station.*

*Real Ales, Real Food and a Real Welcome in a Real Pub!*

caught a WAGN train from Enfield Chase. With the 4 for 2 offer we were able to travel for about. £3 return.

We made our way via the church to the Bull in the main street. There were four beers on, but we chose Jennings Cumberland. Then on to the Waggon & Horses at the western end of the village. Here Greene King IPA and Shepherd Neame Spitfire were on offer.

The walking started seriously now with a continuous moderate climb for about a mile, passing recently cut wheat fields, on to a green lane, and after a further ? mile out to the principal pub of the walk. This is the Lordship Arms at Benington, where a beer festival normally takes place at this time of the year. This year was to be the exception owing to staffing difficulties, but the landlord hopes to revive it for 2006.

However it was not a problem as the pub is a mini festival at all times, having eight beer handpumps and one for cider. The pub has been a GBG entry for a number of years and also North Herts branch Pub of the Year on several occasions. We had lunch here, simple wholesome fare offering good value for money.

A slightly longer, but generally downhill route took us back, including a permissive footpath through Frogmore Hall estate and under the railway before returning to Watton at Stone.

As it was only early evening we decided to stop for a couple of hours in Hertford, visiting a couple of GBG pubs, the Old Cross Tavern and the White Horse, the former a free house, the latter a Fullers pub but with a good array of guests as well.

Ron Andrews

## A LAST WORD ON RIDLEY'S

**H**ere is a letter that appeared in the *Morning Advertiser* on 1 September. It came from Mr Jim Clark, a Ridley's employee from Witham.

*"Standing on the loading bay of Ridley's Brewery as the swallow flies in to feed its second lot of young, I wonder if, like us, this will be the last year that it has a chance of raising a family at Hartford End.*

*The old brewery is slowly dying, with staff leaving as their time here is over. The last four brews are being brewed this week, office staff are just going through the motions of work, a family is about to be broken up and I do not mean the Ridley family, I mean the family of workers, because that is what we were.*

*All the employees at the brewery enjoyed their work. It was not the best paid work in the world but you had a sense of belonging and loyalty to the brewery. To name just a few of the long-serving staff: Billy Price and wife, 30 years' service; Nick Arnold, wife and daughter, 25 years' service; his father before him, Terry Cook, his whole life spent working for the brewery. There are, of course, many more. Mind you, when I say that, there were only 60 people employed here but it was a way of life that we all enjoyed, whether we were production or office-based.*

*The thing that really gets to me is that we were making a profit. We were not going bankrupt like so many companies that are taken over, even though one of our directors bought a company two years ago that has since been dragging us down. We had a unique company – a tower brewery that produces real ale. No disrespect to the microbreweries or to the Campaign for Real Ale, this was the way beer was really made – from a copper to an open*

*fermenting vessel, then after seven days of fermenting racked directly into the cask, with every cask unique in its contents. With no additives and yeast from each brew naturally entering the cask, I has a pride about our beers. Although not everyone's cup of tea, we all knew that Ridley's beers were still produced like they were over 100 years ago.*

*I know that one part of the family will have no financial worries, but the other part all have to find new careers. Do not blame Greene King for this. They were one of the many our company was offered to, with total disregard for the employees. Whether this was greed or not, I do not know, but the loyalty given by all the workers was not even recognised. If only some thought had gone into making sure that the employees would be looked after in their redundancy, instead of having to defend themselves.*

*All I can say, to whom it may concern, is enjoy your money, but think of what you have lost – friendship, loyalty but most of all a sense of belonging to a family that would always have stuck by you through thick and thin.*

*The last brew party is on 9 September, and then we say goodbye to Ridley's; goodbye to the swallows – I hope that you find a new home – and goodbye Old Bob, you have a special place in my heart. And so ends a life of 40 years in the brewing industry, treasured and never to be repeated."*

*That just says it all and beautifully put too. All that remains is to wish Mr Clark and his former colleagues all the very best for the future.*

Tony Hedger

## IDLE MOMENTS

**G**reetings one and all – and while we are at it, Seasonal Felicitations. Having decided to make no disparaging comments about thirty-odd year old pop songs trotted out endlessly yet again, I shall try to amuse you with an apposite quotation on the subject of Christmas – about the best I can think of without raking up Billy Bennett (Almost a Gentleman) yet again is this brief offering from W.C.Fields:

*A Merry Christmas to all my friends except two.*

I wonder if they've twigged yet. Right! Let's get on with the number puzzles; and this month I think I have managed to avoid slipping in the odd answer in the middle:

1. 6 KHW (TL their H)
2. 22 P in a RUT(IR)
3. 1000 L of WW a T
4. 1 is O and AA (and EMSBS)
5. 44 BC – M of J C
6. 288 H of C (TD)
7. 7 E in the H
8. 181 HNYCB in D
9. 4 Q in a C
10. 168 S on a S of D (DS)

Couldn't find anything particularly Christmassy in the brewery anagrams, so you'll have to make do with this lot:

1. OLD MAN
2. CROPPED ONGAR
3. UNREST AS CULT
4. I BRAND HIND
5. DIVER'S IRE
6. HOOPED MAN
7. HOW ODD, ANNE
8. DON'T BURN FIG
9. BOLD EAR
10. GLEE FINDER

I don't know if it was a touch of nostalgia or the fact I've bought a new turntable so I can play all my old vinyl again but I was suddenly stuck by the idea of calling this month's 5BY4, "How well do you know your Beatles?" – and don't you know I actually have ten Beatles LPs. So I picked one track from each and shuffled them up for you to unshuffle. For those of you too young to remember, the albums are the first list and the songs make up the second:

1. Abbey Road
2. A Hard Day's Night
3. Sgt. Peppers Lonely Heart Club Band
4. Help!
5. Please Please Me
6. Revolver
7. Rubber Soul
8. Magical Mystery Tour (the LP!)

9. With The Beatles
10. Beatles for Sale
- A. It Won't Be Long
- B. Here, There and Everywhere
- C. In My Life
- D. Can't Buy Me Love
- E. Yesterday
- F. Eight Days a Week
- G. Twist and Shout
- H. Penny Lane
- I. When I'm Sixty Four
- J. Here Comes the Sun

For the general trivia questions I thought of putting one in involving the king of Nepal, but somehow it didn't happen. Instead I seem to have started off somewhat heavily laden with geography – then it all goes downhill:

1. The Shatt al Arab is formed by the confluence of which two rivers?
2. The city of Manaus stands near the confluence of which two rivers?
3. Of what South American country is Cayenne the capital city?
4. And of what country is Bratislava the capital?
5. Who is the architect who warranted a song about him on Simon and Garfunkel's "Bridge Over Troubled Water"?
6. Presidentially (in the USA, that is), what links Nos. 2 and 6 with Nos. 41 and 43 (and as an aside what is the significance of Nos. 22 and 24)?
7. The World Champion in 2003 was Werner Schlager of Austria, in 2001 it was Wang Liqin of China and the last English World Champion was Johnny Leach in 1949. What is the sport?
8. What toxin is produced from the beans of the castor oil plant?
9. Who is the patron saint of archers (perhaps ironically as he is frequently, if inaccurately, depicted as being martyred by arrows)?
10. Who is supposed to have nailed his "95 Theses" opposing the sale of indulgences to raise money for the building of St Peter's in Rome to the door of the church in Wittenberg?

Gyanendra Bir Bikram Shah Dev, by the way. If you are confused, see above.

And finally may I wish you all a truly splendid Christmas and a happy prosperous New Year – especially our illustrious editor (in the hope that he will be able to spare enough space this month for this to be readable). Answers next time (as always) by which time we'll be looking forward to the onset of Spring!

*Andy Pirson*

# IDLE MOMENTS

## OCTOBER'S ANSWERS

As promised, here are the solutions to the puzzles set in October's Idle Moments column.

### NUMBER PUZZLES:

1. 82 Scoring Areas on a Dart Board
  2. 4 Strings on a Violin
  3. 23 Railway Cuttings, East Cheam
  4. 7 Veils in the Dance
  5. 10 is the Cube Root of a Thousand
  6. 3 Points on a Trident
  7. 10,000 Grand Old Duke of York's Men
  8. 19 Jim Laker's Wickets in a Test Match against Australia in 1956
  9. 6 Wheels on a London Trolley Bus (except No. 63)
  10. 2 Bridges over the Course of the University Boat Race
- ... and thanks to all those of you who did not point out my cock-up on number 4

### BREWERY ANAGRAMS:

1. SKY AND CRAB - BRANDY CASK
2. NUMBER THORN, LAD - NORTHUMBERLAND
3. BEATS RATE - BATTERSEA
4. HIP? NO, LUNG - PLOUGH INN
5. CHIDE FILL - LICHFIELD
6. IN TREWS - WINTER'S
7. TIN RACE CON - CONCERTINA
8. MRS. ACHE - MARCHES
9. NOR VENT - VENTNOR
10. LONG SAD FIR - FROG ISLAND

### 5BY4:

#### Trees

1. Aspen - Populus tremula
2. Ash - Fraxinus excelsior
3. Beech - Fagus sylvatica
4. Scots pine - Pinus sylvestris
5. Holly - Ilex aquifolium
6. Yew - Taxus baccata
7. Field Maple - Acer campestre
8. English (common) oak - Quercus robur
9. Lime (small leaved) - Tilia cordata
10. Silver Birch - Betula pendula

### GENERAL KNOWLEDGE:

1. In the Second World War, "Station X" where German cipher messages were decoded was at Bletchley Park.
2. The service that ran in London from 16th May 1931 until 9th May 1962 was the Trolleybuses.
3. Heights of places on O.S. maps are measured "above ordnance datum" which is mean sea level at Newlyn. (I hope the clue didn't cause too much confusion)
4. Once upon a time there was a Tate Gallery - now there are four, two in London, and the other two are in Liverpool and St. Ives.
5. Brown Willy is 1,377 feet high (and it's still not rude!) and it is the highest point of Bodmin Moor.
6. Phossy Jaw was a necrotic bone disease affecting the jaw which was prevalent among match makers during the 19th Century (No, not personal introduction agencies).
7. Founded by Sir Henry Wood in 1895, it was the Proms that were always held in Queen's Hall, London until it was bombed on 10th May 1941.
8. In Alice's Adventures in Wonderland, the label of the Mad Hatter's Hat bore the legend "In this style 10/6."
9. Cast in Bronze and suspended from a plain crimson ribbon - it is The Victoria Cross.
10. Samuel Taylor Coleridge was interrupted by the arrival of "a person on business from Porlock" in 1797 and so never got beyond line 54 of the poem Kubla Khan (or A Vision in a Dream).

**Advertise in the next  
LONDON DRINKER**  
Our advertising rates are  
as follows:

**Whole page £260 (colour)  
£220 (mono)**

**Half page £150 (colour)  
£110 (mono)**

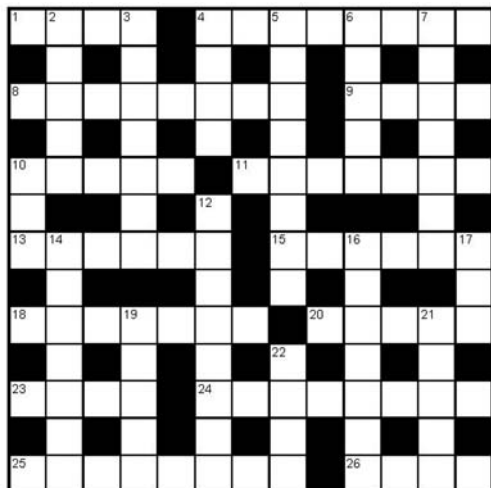
**Quarter page £80 (colour)  
£55 (mono)**

**Phone Peter Tonge now on  
020 8300 7693**

# LONDON DRINKER CROSSWORD

Compiled by DAVE QUINTON

£20 PRIZE TO BE WON



Name .....

Address .....

.....

.....

All correct entries received by first post on 25th January will be entered into a draw for the prize.

Prize winner will be announced in the April London Drinker.  
The solution will be given in the February edition.  
All entries to be submitted to:  
London Drinker Crossword  
25 Valens House  
Upper Tulse Hill  
London SW2 2RX

## SOLUTION TO OCTOBER'S CROSSWORD



## ACROSS

1. Left idiot to be idle. [4]
4. Model typist departed. [8]
8. Writing to be brought back into the country. [8]
9. Fly returning for bite. [4]
10. Look into people supplying fruit. [5]
11. Forced papers to take on journalist. [7]
13. Stop boy making jam perhaps. [6]
15. Some automatons love apple [6]
18. Number one story written about pride. [7]
20. Stick rabbit on spit initially. [5]
23. Spare list. [4]
24. Wanders around and puts article into repairers. [8]
25. Get lost with one no good creature. [8]
26. Plant provides a buck up. [4]

## DOWN

2. No area for fresh air. [5]
3. Decoration on small jugs. [7]
4. Boy gets in final upper cut. [4]
5. Mist near looming towers. [8]
6. Position of many from America. [5]
7. Beat man to the line. [7]
10. Rabad mongrel always dies first. [3]
12. Grass fit for the queen. [8]
14. Drink intended to cause illness? [7]
16. Mother with little alternative to becoming killer. [7]
17. It's all right to sit round a tree. [3]
19. Group turned over half the joint. [5]
21. Elgar variation is great. [5]
22. Girl will perhaps swallow beer finally. [4]

Winner of the prize for the August Crossword:  
Brian Collins, South Norwood, SE25

Other correct entries were received from:  
Imogen Aryfrend, Geoff B, M.Broadhead, Ben Burfutt, Eddie Carr, Chris Fran & a spotted dog, Charles Creasey, K.Creighton, Paul Curson, Des Daniels, John Dodd, Richard & Clever Clogs Douthwaite, Maria Ellis, Kathryn Everett, Mike Farrelly, S.Ford, Arthur Fox-Ache, Sally Fullerton, Gibberish @, Chloe Gilbey, Marion Goodall, Paul Gray, J.E.Green, Alan Greer, Stuart Guthrie & Kaiser R Serrar, Tarnya Haigh, Brian Hall, John Harmer, John Heath, Alison Henley, Kevin Henriques, Graham Hill, William Hill, Sheerluck Holmes, Tom Kemp, Joe Kerrigan, Pete Large, Terry Lavell, J.G.McDonnell, Mike McHugh, K.I.May, Alec Moore, M.J.Moran, Stewart Moul, Mick Norman & Mumsie, Alf O'Coyle, Jeanette Powell, Rod Prince, Derek Pryce, Richard & Joy, Richard Rogers, Emma Royd, Steve Slater, Steve Slater & Stuee G, Bryan Smith, Lesley Smith, N.Stone, Ken Taylor, Bill Thackray, Thamesmeado, The A Team, Mark Thompson, John Vallintine, Neil Walton, Tony Watkins, Martin Weedon, Ian Whiteman, Sue Wilson.



# RELAX

**we haven't  
changed the beer**

Young's Bitter

has always been a favourite,  
so we thought it deserved  
a smart new look.

Look out for our

new brand identity

gracing discerning bars

everywhere – confident

that it's the same

great pint of bitter

you've come to

expect from

Young's.

**THIS IS A RAM'S WORLD**

[youngs.co.uk](http://youngs.co.uk)





# Have a Great Christmas



## with Hogs Back

Book your Christmas ale NOW to avoid disappointment  
T.E.A. & other fine Hogs Back draught ales are available  
to take away in container sizes to suit all parties.

Call our shop direct on 01252 784495

Also bottled beers & gift ideas

