



CAMPAIGN
FOR
REAL ALE



The Market Porter, SE1. See page 12.

SINGLE MINDED.



TURNER'S STICKLEBRACKT BITTER

A traditional style pale ale with a modern interpretation using a single variety of New Zealand hop, the Sticklebract.

Originally created to celebrate the opening of
The Porterhouse in Covent Garden, London, in July 2000.

Only available at The Porterhouse.

The Porterhouse
Maiden Lane, Covent Garden WC2 E7NA
tel. 0207 379 7917 fax 0207 379 7991

www.porterhousebrewco.com



Ireland's
Largest Genuine Irish Brewery



EDITORIAL

TIME TO GET WILD ABOUT MILD

In May CAMRA members will once again be turning their thoughts to supporting one of our oldest beer styles. The focus of this campaign is Mild Day on 6th May.

Sales at beer festivals in the London area show that this style of beer is very popular amongst beer aficionados, with stocks of it running out long before the last cask has been drained. There has also been a small increase in the number of pubs selling it too.

But what is a mild? Normally under 4% in ABV, they range from black to dark brown to pale amber in colour. Malty and possibly sweet tones dominate the flavour profile but there may be a light hop flavour or aroma. Slight butterscotch flavours may also be noted. Pale milds have a lightly fruity aroma and gentle hoppiness. Dark milds may have a light roast malt or caramel character in aroma and taste. There are also a few stronger milds, up to 6% ABV, which are fuller bodied with a malty richness. They may also be richer in caramel, or have a light roast malt character in aroma and taste. Quite a few milds do not have the word in their name, so you may even be drinking one without knowing it.

Mild Month in May is already an established part of the calendar for many pubs, breweries and CAMRA branches. Because of this it is the time of the year that most seasonal milds are produced, and a time when more milds are easily available at the pub. CAMRA branches will as usual be organising a variety of events during the month to celebrate this fantastic beer style. These will include socials and pub-crawls involving pubs selling mild, as well as mild tastings. Details of the events in the London area will be found on the Branch Diary Pages within this magazine; please support them.

And where might you be able to get Wild about Mild yourself? We are hoping that a good number of pubs in London will get behind this campaign as usual. Any pubs needing ideas of what to stock and where to get it from are referred to the CAMRA web site: www.camra.org.uk. The Royal Oak, SE1, the Trafalgar, SW19 and the Wenlock Arms, N1 usually sell mild all year round, so are good bets. During May try the Brewery Tap, SW19, the Junction Tavern NW5, the Oakdale Arms, N4, the Pembury Tavern, E8 and the Priory Arms, SW8 as well. It is also understood that Fuller's pubs will be selling Gales Festival Mild, albeit brewed at Chiswick, for at least part of the month.

Please search out this wonderful style of beer and give your taste buds a treat. You may even end up being as Wild about Mild as I am!

John Norman

Enjoy beer drinking in New Zealand with Sue and 'Arry Hart -
visit the Travel Pages at www.londondrinker.org.uk

Views expressed in this publication are those of their individual authors and are not necessarily endorsed by the Editor or the Campaign for Real Ale Limited.

London Drinker is published by Mike Hammersley on behalf of the London Branches of CAMRA, the Campaign for Real Ale Limited, and edited by Geoff Strawbridge.

Material for publication should preferably be sent by e-mail to geoff@coherent-tech.co.uk.

Press releases and letters by post should be sent to Tony Hedger, Apartment 11, 3 Bevelly Street, London SW19 1XE

Changes to pubs or beers should be reported to Capital Pubcheck, 2 Sandtoft Road, London SE7 7LR or by e-mail to capitalpubcheck@hotmail.com.

For publication in June 2006, please send electronic documents to the Editor no later than Wednesday 17th May.

SUBSCRIPTIONS: £3.00 for mailing of 6 editions should be sent to Stan Tompkins, 52 Rabbs Mill House, Chiltern View Road, Uxbridge, Middlesex, UB8 2PD (cheques payable to CAMRA London).

*ADVERTISING: Peter Tonge:
Tel: 020-8300 7693.*

*Printed by Cliffe Enterprise,
Lewes, East Sussex BN7 2RJ*

IN THIS ISSUE

News round-up	5
Book reviews	17
London for free	19
Letters	23
Branch diaries	25
Capital Pubcheck	27
Membership form	30
Cask Marque	37
Idle Moments	44
Crossword	46

10th
Anniversary



THE RED LION

Linkfield Road, Isleworth

Tel: 020 8560 1457 (Isleworth British Rail 2 mins)

10th
Anniversary

May Day Weekend
Champions
Beer Festival
28th April - 1st May

Friday Noon to Monday 11pm

Over 50 different Award Winning Real Ales from breweries across the country

Entertainment & Food on all four days
music includes The Ginny Brown Band, Steve Whalley, TKF
and The Good Old Boys, additional entertainment in the
garden including Mark our children's entertainer

Admission Free

Real Ales & Real Entertainment - A Real Local Pub

Visit our website at www.red-lion.info

NEWS ROUND-UP

E-mail: ldnews@btinternet.com.

◆ Licensing laws

Still no hordes of drunks rampaging through our streets then? In fact, Home Office figures showed a substantial reduction in alcohol-related violent crime over Christmas. There is still some confusion over the issuing of licences, however. The Welsh Liberal Democrats claimed that at least 175 pubs in North and Mid-Wales were operating illegally but the local authorities concerned said that they were all properly licensed. There are also still some problems with interpretation. In different parts of the country, the police have closed pubs on the spot where they found that the licensees were not present on the premises. This is, according to the *Morning Advertiser*, contrary to the guidelines issued by the DCMS (Department of Culture, Media & Sport).

There have been a number of cases where publicans have successfully appealed against unreasonable conditions. For example, a village pub near Leicester was required to have door staff seven days a week and have a specific family area. Magistrates agreed that neither condition was reasonable and overruled

the local council, awarding the licensee £1,250 costs. My view is that we can put these down to 'teething troubles' with local authorities and the police just learning how to use their new powers.

◆ Smoking ban

The Government has finally put its proposals to Parliament and, with the a free vote on the bill avoiding it being a party issue, smoking will be banned in all enclosed public places, including pubs, bars, restaurants, private members' clubs, cinemas and offices from the summer of 2007. The vote was 453 to 125. It is however only the start of the process; the bill has a long way to go yet and the tobacco lobby is not without influence.

From what has been said in the *Publican* and the *Morning Advertiser*, the pub trade in general has accepted the ban as inevitable, although there are very serious concerns that the timescale for implementation is too short. For instance, Michael Turner of Fuller's said that a start date any earlier than the end of 2008 would be unrealistic. The pub trade also welcomed the 'level playing field' created



WADWORTH
6X[®]
Handmade in Devizes

objects

Found only in the best London pubs.

www.wadworth.co.uk

by the inclusion of private members' clubs in the ban. There was however some surprise that the fines for permitting smoking would be up to £2,500 instead of the anticipated £200.

Mark Hastings of the British Beer & Pub Association still thought that there was the prospect that hundreds of community pubs will close and people will lose their jobs. A British Institute of Innkeeping survey reported that 35% of its members would leave the trade if the ban happened whilst 97% said that they would lay off staff. The *Morning Advertiser* however said that it was time to attract a 'lost generation of anti-smoking trade' and Charles Wells is to spend £1 million on providing outside areas for smokers. In the meantime, start buying shares in firms that make gazebos, garden umbrellas and outdoor heaters...

Meanwhile a ban is due to come into force on 1 April in Scotland although the pub chain London & Edinburgh, along with one of their licensees, are considering a judicial review on the grounds that the Scottish Executive has exceeded its powers. Their chairman, Alan Bowes, believes that the ban on smoking in pubs will lead to more smoking at home and more children being put at risk from passive smoking. Scottish publicans are also concerned that there is no clear definition of 'outdoor area'.

◆ Fuller's

I suspect that most readers of this column will be saddened but not at all surprised at the announcement that the old Gales brewery in Horndean, Hampshire will close at the end of March. Interestingly, I was in a Fuller's pub recently that was advertising HSB and Festival Mild on its future beers board. I hadn't thought that Fuller's might make their versions of the Gales beers available in their existing pubs. It will be interesting to see how they are labelled. A friend whose local is an (ex)-Gales house in Sussex also mentioned to me that London Pride has not gone down well there as a replacement for Butser, and so the brewery are offering Chiswick instead. Perhaps this could be a lifeline for Fuller's lowest-volume cask beer?

◆ Everards introduce tasting notes

Leicester-based regional brewers Everards have introduced basic tasting notes for their beers on the back of pump clips for staff and on beer mats for customers. The information given is the strength, the colour, the smell and the taste. It also indicates bitterness and sweetness in terms of one to five hop cones and sugar lumps. For example, Beacon Bitter is amber, hoppy, dry, bitter moreish and rates 4 hop cones and 2 sugar lumps. It may not be terribly sophisticated but it gets the message across. Good on them.

◆ Mixed views for cask beer

SIBA, the Society of Independent Brewers, has predicted that growth will return to the cask ale market in the next 18 months. SIBA chairman Keith Bott said that their "2006 Local Brewing Industry Report" showed that SIBA members are bucking the trend and the strength of demand for local beer is there for all to see. Paul Nunny of Cask Marque commented: "It is a bold statement to make but it reflects the positive performance of the membership of SIBA". A spokesman for the British Beer & Pub Association however put a dampener on it with the comment that "other industry sources show a greater decline in the cask ale market in 2005 so predictions of such a growth are highly optimistic".

◆ Good reports for CAMRA's National Pubs Week

I am pleased to report that for the second year running, the trade press were very enthusiastic and complimentary about National Pubs Week. The *Publican* gave particularly favourable coverage to the new campaign for Porters, Stouts and Old Ales. And let's not forget Mild with May not too far away.

◆ Sheps get shot at

Shepherd Neame's World War Two advertising is under attack again. This time it was one that included a spoof crossword including the letters 'SS'. I have to say that I did not see this although it sounds dangerously close to tasteless. There were complaints to the Advertising Standards authority



The very first

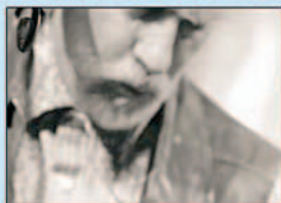
Rhythm Festival

August 4th, 5th, 6th, 2006

Twinwood Arena, Clapham, Nr Bedford



**JERRY LEE
LEWIS**



ROY HARPER
performs Stormcock with FRIENDS



DONOVAN

ARLO GUTHRIE

**THE BLUES BAND • CHAS & DAVE • CULTURE
CLASH • DESMOND DEKKER & THE ACES • THE
DYLAN PROJECT • FASTLANE ROOGALATOR
GENO WASHINGTON & THE RAM JAM BAND
HUGH CORNWELL • JAH WOBBLE & THE
ENGLISH ROOTS BAND • JOHN COOPER
CLARKE • JOHN OTWAY • NINE BELOW ZERO
PAUL THE GIRL • THE ROLLIN STONED • SETH
LAKEMAN • THE STORYS • WILKO JOHNSON**

PLUS MORE ARTISTS TO BE ANNOUNCED ON 2 STAGES

WEEKEND TICKETS: £75.00 each (£59.00 for 12-17 year-olds) one child (11 & under) free with every adult, extra children £29.00 each. All under 18s must be accompanied • **Camping:** £15.00 per tent Campervans: £29.00 each • **LIMITED DAY TICKETS** (no camping): Fri £29.00 Sat £39.00 Sun £39.00 • Buy online or by post (cheques payable to 'Smarter Music Ltd) from Rhythm Festival Office, 16 The Woodlands, London SE13 6TY (no callers) 020 8698 7834 jim@rhythmfestival.net

Festival updates/ buy online: www.rhythmfestival.net



Credit cards: tel 020 7734 8932 (10am-7pm) b/fee applies

Supervised campsite • showers • top loos • extensive market • quality food
kids domain & events • healing & alternative field • fringe events • lots more

Real ales from Charles Wells of Bedford

Supporting Amnesty International



who are now considering the matter. According to the Daily Telegraph, Mayor of London, Ken Livingstone, described the advert as “astonishingly evil” and added that Spitfire was a mediocre beer. His Office said that the remarks, which appeared on an unofficial website, were not attributable to the Mayor. In its eight years, the campaign has raised almost £10,000 for the RAF Benevolent Fund and other service charities. I just wonder what they will come up with for the football World Cup in Germany in a few weeks time...

Better news for Sheps' was that their Bishops Finger Kentish Strong Ale has won a silver award in the Best UK Drink/Beverage category of the Daily Telegraph's Taste of Britain Awards 2006. The ale has its own charter, which decrees that it must be brewed only on Fridays by the head brewer and holds the rare distinction of being granted a Protected Geographical Indication the EU. Bishops Finger is believed to be unique in that it is entirely the product of a single county. The ingredients are simply water from Shepherd Neame's 200ft deep artesian well combined with Goldings hops and Winter Pearl malting barley, both grown in Kent.

◆ Pubs in Time

Although announced as part of National Pubs Week but worth a mention in its own right is

CAMRA's Pubs in Time plaque project. Assisted by London School of Economics academic Simon Davies, CAMRA has short listed 14 pubs which it feels are worthy of being awarded a specially designed plaque which recognises pubs with a remarkable history.

CAMRA Chief Executive Mike Benner said: “Hundreds of pubs across the country have a story to tell, and these first 14 are only the beginning. We want to encourage more licensees to come forward and apply for Pubs in Time accreditation, which we expect will soon be considered as a stamp of authenticity for the incredible stories surrounding pubs handed down through the years. This includes the arts and popular culture, with pubs playing host to writers, poets and musicians. Momentous scientific discussions such as the discovery of DNA took place in a pub, as well as pivotal military events with pubs hosting meetings between luminaries such as the Duke of Wellington and the Emperor of Russia.” Each of the Pubs in Time plaques will feature a brief synopsis of the event that took place.

Mind you, CAMRA Research and Information Manager Iain Loe added : “No-one would believe how much nonsense and mythology there is around pub history. Even the celebrated dispute over which pub the Great Train Robbery was planned in turns out to be fiction – the robbery was planned in a safe

Hemingford Arms

158 Hemingford Road, London N1 1DF

Tel: 020 7607 3303

Email: enquiries@hemingfordarms.com

The Hemingford Arms is Barnsbury's finest freehouse, serving traditional ales in a friendly atmosphere

- At least 5 real ales on offer
- Una's fab home cooking
- Thai food in the evenings served 6 nights a week
- Come and try our theme nights or the Super Quiz on Monday evenings
- Live music at weekends with Irish bands
- All the latest football and Rugby action shown

Why not hire out our lovely upstairs function room and bar?



ADNAMS. BEER FROM THE COAST.

ADNAMS PLC, SOLE BAY BREWERY,
SOUTHWOLD IP18 6TW,
WWW.BEERFROMTHECOAST.CO.UK



house in Oxfordshire. The great poet John Dryden was supposedly nearly killed in an alleyway next to one London pub, but CAMRA discovered the alley was not built until 71 years after his death."

There are two London pubs on the first list. The Town of Ramsgate in Wapping is where the infamous Judge Jeffries, who presided over the Bloody Assizes, enjoyed his last moments of freedom before being captured whilst the Clissold

proper Caerphilly cheese and Welsh leeks. This could be an interesting idea if it goes country-wide.

◆ St Albans best for a pint

Ask Marque inspectors have aggregated the marks awarded for the 19,278 pints sampled in their various inspections and the best town for beer in Britain, with an average mark of 19.7 out of 20, is none other than CAMRA's home of St Albans. Unfortunately, the period of the survey was not mentioned. The West Country did well with Plymouth, Truro, Taunton, Portsmouth and Bristol all in the top ten.

◆ S'truth!

Shane Parr, an Australian, has set up a microbrewery, the Offa's Dike Brewery in Trefonen, Shropshire after developing a passion for beer after arriving in the UK six years ago. Why is this worth reporting? Simply because Mr Parr is only Australian in the first place because his great-great-grandfather was transported there for illegal brewing. Good on yer, mate!

◆ One up for the Doctor

Those of you who watch a forthcoming Doctor Who episode in which Billie Piper is chased around a room full of shiny cylinders by some aliens may be interested to know that these are the fermenters at Inbev's lager factory at Magor. My recollection is that the good Doctor often has to fight strange creatures who pass themselves off as something else and here he, at least, stopped production of cloned Stella Artois for a few precious hours.

◆ More technology

Are any of you old enough to remember the Canned Draught Guinness that you frothed up with a strange syringe-like device? Well, Guinness have updated the concept. They are spending £2.5 million on marketing a plug-in electrical gadget called a 'surger' which you use to send an ultrasound signal through a glass of Guinness poured from a widgetless can to create a 'velvet pint with a creamy head' to match what you would get in a pub. A kit, including the Surger, a pint glass and two cans of Guinness, costs £16.99.

Just in case you are wondering, this last item is not an April Fool's joke. I have not included one this year because I can't compete with what is actually happening...

Tony Hedger

(The news that Greene King have bought Young's Brewery is of course embargoed until the morning of 1 April - Ed.)



Arms, Fortis Green, was the site of the first public performance of Ray and Dave Davies, founding members of the Kinks, in December 1960.

◆ News from Wetherspoon

All has been quite on this front for a while, which has probably been good news. Pre-tax profits were up by 21% to £27 million for the six months ended 22 January 2006 on a turnover which had increased by just 1% to £406 million. Predictions for the immediate future are not good, however, because of the smoking ban in Scotland, the expected impact of the football World Cup and the reduced takings from the pubs which JDW have already made non-smoking - down by 20%.

As a consequence, the plan to make all pubs non-smoking has now been suspended and JDW will just go with events. They are also going to install televisions in all of their pubs, which will disappoint many customers. The reason is not the World Cup; it is so that those who go in when the pubs open at 9am can watch the morning news whilst having their breakfast. What is shown will be at the discretion of pub managers. Meanwhile, JDW have introduced a Welsh speciality menu in their pubs in Wales, featuring such delights as Welsh Dragon sausages (not actually made with dragon-meat), Welsh lamb,

The Willoughby Arms's Tenth Successive St. George's Day Beer Festival

Featuring 40 traditional
English Real Ales &
Farmhouse Ciders
Festival T-Shirts

Glasses
Discount Ale-Trail Cards
Traditional English Music



For further details call 020 8546 4236 or
Visit www.thewilloughbyarms.com

2006
97/06

"Cry
Ale!
For
England,
Harry &
St. George!"

Thursday 20th April
Till

Sunday 23rd April
Noon till midnight
each day

Live Music...

Friday ***"The Bourbon
Street Revival"***

8 till Midnight

Saturday **"SPIKE"**

8 till Midnight

Sunday **"St. George's
English" Quiz**

9 till Midnight **FREE to Enter**

The Willoughby Arms

47 Willoughby Road
Kingston upon Thames Surrey KT2 6LN

MARKET PORTER CARRIES AWAY THE CROWN

The 2005 Pub of the Year for the South East London CAMRA branch area is the Market Porter, Stoney Street, SE1. This well known pub next to Borough Market is famed for its large selection of ales from around the country. The landlord, Nick Porter, is keeping the quality of the beer consistently high. The Market Porter has appeared in the Good Beer Guide six times in the last 12 editions and, after a refit to enable more customers to enjoy the ales, it is now very difficult to get standing room in this very popular traditional public house.

Branch Chairman, Andrew McGuinness said "To make this announcement during National Pubs Week is an extra pleasure, so go out and enjoy your local and if that's the Market Porter, what a lucky little imbibber you are". The presentation will take place at the pub on 11 April, some time after 8pm.

Roz Cox, SE London CAMRA

A YEAR OF PLENTY AT THE LAND OF LIBERTY

Martin Few, ex-chairman of Watford & District branch, came up with an interesting plan for New Year's Eve a couple of years ago. He racked up a couple of firkins of ale in the back yard of his house in Sutton Road, Watford; broke out his collection of traditional pub games and invited a few friends round for the night. Thus was born the Sutton Arms, and a regular New Year's tradition that continues to this day, albeit now at a genuine pub, the *Land of Liberty, Peace and Plenty*, which Martin and his partner Gill Nicoll took over in January 2005.

The pub is situated in Heronsgate, one of the more rural outposts of the Watford & District branch area. It can be pretty tricky to get to, so Martin and Gill have had to put a lot of effort into raising the pub's profile. As you would expect from keen CAMRA

members, the real ales were a big priority and the Land of Liberty has seen over 200 beers come and go over the last year, most of which came from smaller breweries. In addition to the beer offering, which now includes a changing range of continental bottled beers, the pub holds regular quizzes and music nights, which are always popular, as well as themed food nights, tutored beer tastings and a monthly traditional pub games night that helps to keep the spirit of the Sutton Arms alive throughout the year. The more clement spring and summer months have seen the extensive outside area used for Morris dancing, spit roasts and even a dog show.

Forthcoming events are listed in Gill's monthly newsletter and on the web site www.landoflibertypub.com, which also has a

constantly updated list of upcoming beers. Martin and Gill's hard work seems to be paying off as their first-year anniversary party in January saw the pub packed and the car park full for an evening of beer and music.

The party's revelries were enhanced by the news that the licensees' paper, the *Morning Advertiser* had named Martin and Gill 'Carlton Region Best Newcomers' at its Best Pub awards.

No sooner had this happened than the pub bagged another award, when Watford & District branch named the Land of Liberty its Pub of the Year for 2005. Presentation of the certificate necessitated another visit (oh well), which took place on the same night as one of the regular quizzes, as it happens. The Land of Liberty is a cosy place and once again it was packed, with quiz-

goers and CAMRA members alike jostling for space and seats; but everyone enjoying themselves – not least of all Gill and Martin. It was clear that Martin was very pleased that the pub had received the award, especially after having given it to other winners himself so many times before.

If you fancy a visit to the pub it can be found on Long Lane, which is a 20-minute uphill walk from Chorleywood Metropolitan Line Station (you'll need a map or street plan) or a 2-minute drive from Junction 17 of the M25. Red Rose Travel operates the R4 shuttle bus, which starts in Watford Town Centre and visits Long Lane, but services are infrequent. It can take a bit of effort to get there but it's well worth it.

Andrew Vaughan



PEMBURY TAVERN, GREAT FOR E8

The Pembury Tavern, 90 Amhurst Rd, E8 (near Hackney Downs or Hackney Central stations) was built in the mid 19th Century. In the late 1990s it closed after a fire. The pub is located at the junction of Amhurst Road and Dalston Lane, it reopened on 6 January 2006; the official opening party was held on 18 February when 14 ales were available. When you enter the pub by one of the three entrances the sight of 16 handpumps impresses you. All you have to do then is decide which beer to have first.

After several enjoyable visits East London & City CAMRA members wanted to hold a branch social here. The social, on 10 February, was very well supported. We were too busy drinking and talking to do a head count but we had at least 30 people there. Everyone agreed that the Pembury Tavern is what E8 has been waiting for. There was a cider from Welsh County called Seider'O'Sir and 11 ales: from Milton, Minotaur, Uluru, Sparta, Pegasus, Nero and Mammon; from Jarrow, Bitter, Rivet

Catcher and Joblings; from Castle Rock, Hemlock and from Nottingham, EPA. All were top quality. Bar snacks for the event were very generously supplied by the management.

You can get an idea of the atmosphere on the night from the pictures. This **no** smoking, **no** Guinness and **no** big brand keg lager pub does sell Budweiser Budvar on draught; bottled European beers, mainly from Belgium; a tempting selection of single malts and a selection of wines. Food is not available at the moment but there are plans to start cooking when the kitchen refurbishment is completed later in the year. Some Hackney councillors who are also CAMRA members unwind after meetings here. A variety of board games is on offer, as well as cards, bar billiards and pool.

We have planned a triple branch social on 16 May with North London and Enfield & Barnet.

John Pardoe

Advertise in the next LONDON DRINKER

Our advertising rates are as follows:

Whole page £260 (colour) £220 (mono), Half page £150 (colour) £110 (mono)

Quarter page £80 (colour) £55 (mono)

Phone Peter Tonge now on 020 8300 7693

Mitre

24 Craven Terrace, London W2 3QH

Tel: 020 7262 5240

Email: enquiries@mitrebayswater.com

The Mitre is one of London's most splendid listed free houses, beautifully restored and newly refurbished.

- Home to fine ales including Greene King IPA, Adnams Bitter, Hogs Back TEA, Bombardier and London Pride and other guests
- Come and try our delicious traditional home cooked food
- Outside seating to enjoy the spring sunshine
- Beautiful upstairs function room and basement bar are also available to hire for your party.





Welcome to the Carlisle Arms

Bateman Street, London W1

Tel: 020 7479 7951

We feature Ales of the Week from
Micro Breweries at all times -
12 new ales every month.

London Pride always a regular.

**Many thanks to our locals and
guests for making our special
British Pub Week so successful.**

We sampled:

- ◆ Greengate Pale Ale
- ◆ Skinners Best Bitter
- ◆ Coach House Flintlock
- ◆ Mordue Workie Ticket
- ◆ Itchen Valley Wat Tyler
- ◆ Atlas Nimbus

Come and see us sometime - our
pub's tiny but perfectly formed!

You'll get a warm welcome and
always the chance to try something
new.

Your host Dave Magee is a long time
CAMRA member and dedicated to
Real Ale.



*A genuine Free House featuring a
selection of the very best in Cask
Ales, Traditional Cider and Perry*

- Mild always available
- Liefmans Kriek on draught
- Wide selection of continental bottled beer
including Duvel and Chimay
- Function room free to CAMRA members
- Thursday night is Quiz Night
- Jazz piano Sunday afternoons
- Jazz/Blues every Friday and
Saturday evening
- Open daily from midday



**CAMRA
NORTH LONDON
PUB OF THE YEAR
1995, 1996,
THE MILLENNIUM 2000
AND 2004**

**26 Wenlock Road
London N1**

020 7608 3406

Nearest Tube stations are Old Street (exit 1)
and Angel. Wenlock Road is off City Road
via Windsor Terrace
<http://www.wenlock-arms.co.uk/>

PLANET THANET ALE FESTIVAL

The Thanet branch of CAMRA are holding the first Planet Thanet Ale Festival on Good Friday and Easter Saturday, 14 and 15 April 2006. The venue is the stunningly located grade II listed Monkey House on the West Cliff, Ramsgate, Kent overlooking the sea. Entry is £3 on Friday and £2 on Saturday (but free to card-carrying CAMRA members). There will be good quality live entertainment and food will be available at all times. Oh.. and 40-odd real ales plus Kentish ciders.

There is also a Continental market being held in

the town so there will be plenty to see, eat and drink, making it a good seaside Bank Holiday weekend for everybody.

We are looking for volunteers to help out: any assistance will be gratefully accepted (please call Chrissy on 01843 853311). We look forward to welcoming as many of you as possible here on the Planet.

Cheers!

Damien Clark

01843 853311, dclark@monstergraphics.co.uk

BOOMING BATTERSEA

South West London Branch are pleased to report an extremely successful Battersea Beer Festival. Virtually all of the beer and cider was sold and we had to close the doors when the fire limit was reached quite early on each of the three nights; many thanks to all of you who queued so patiently in the freezing cold. We are always amazed at how loyal our customers are, not least the couple who were en route from Alaska to Salzburg and who passed the 8 hours that they had to change planes at Gatwick by coming up to Battersea. The whale that arrived a week earlier was however nothing to do with us.

The Branch would like to thank all of its members and friends from other branches who helped out, thus making this success possible. Special mention must go to Peter Sutcliffe and his team on the Foreign Beer bar who put in a Rorke's Drift-style performance when the cask beer ran out. For the first time ever, we were without stalwarts 'Arry and Sue Hart because of illness but I am pleased to say that this was only temporary. This was the first festival held in London under the new licensing arrangements and the new insurance requirements and congratulations are due to the Festival Committee and, in particular, Chief Steward Gill Felton for coping with it all.

As is traditional, the Branch's Pub of the Year was

announced on the Thursday afternoon. The winner was the Grapes (Yongs) in Fairfield Street, Wandsworth. The announcement was, most fittingly, made by the Mayor of Wandsworth, Councillor Diana Whittingham, who admitted that, as it is next to the Town Hall, the pub was not unknown to her. There was a substantial delegation from Young's, led by Ken Don, present to hear the announcement as well. Our congratulations go to Des Madden and Sharon Callan, the licensees. This makes it a hat-trip for the Irish, following Angie Shaw of the Sultan in 2003 and Fergal O'Hanlon of the Trinity Arms last year. The runners-up were the Priory Arms (Stockwell), The Prince of Wales (Garratt Lane) and the Gardeners Arms (Southfields).

Other notable guests were the Mayor of Lambeth, the Deputy Mayor of Merton and Battersea MP Martin Linton. There was also an opportunity for Councillor Whittingham to meet Wandsworth's other brewer, Stephen Nockolds of the Battersea Brewery Company.

The festival was opened by Sue, partner of our dearly-missed comrade, John Barry. The event was dedicated to John's memory and we think that we did him proud.

Tony Hedger

7th KINGSTON BEER FESTIVAL, JUNE 23-24 (Fri-Sat)

SURREY COUNTY STAFF CLUB, PENRHYN ROAD, KINGSTON UPON THAMES
(Nr Crown Court and County Hall).

45+ cooled Real Ales plus ciders and perries. Food available at all sessions, including hot food on Fri eve and Sat. Lounge (after 1pm on the Fri), outdoor marquee and beer hall.

Open Fri 11-3 (free), 5.30-11 (£2); Sat 11-9 (£1.50) (note new Sat hours); card carrying CAMRA members £1 Fri eve, free at all other times.

15 mins walk from Kingston or Surbiton Railway Stns. Buses 71, 281, 406, 418, 465, K2 and K3 between the two pass the door.

Staff required: contact Steve Hill on 020 8399 4637 or kbf7staffing@camrasurrey.org.uk.

All other enquiries to kbf7@camrasurrey.org.uk.



CAMPAIGN
FOR
REAL ALE



CAMPAIGN
FOR
REAL ALE

FIRST BEXLEY BEER FESTIVAL



21-23 April 2006

Sidcup Sports Club
Crescent Farm, Sydney Road,
Sidcup DA14 6RA

60 Beers & Ciders

**Souvenir glasses, snacks,
entertainment**

Admission:

Friday 21 April	11am-5pm	£1, CAMRA members free
	5pm-11pm	£2, CAMRA members £1
Saturday 22 April	11am-11pm	£2, CAMRA members £1
Sunday 23 April	Noon-3pm	(if any beer left) Free

All rights of admission reserved



CAMPAIGN
FOR
REAL ALE



CAMPAIGN
FOR
REAL ALE

THROUGH THE GATEWAY TO THE SOUTH

This brand new, handy little guide gets its name from an old Peter Sellers sketch that refers to Balham – the Gateway to the South (hilarious I assure you and worth checking out).

It is almost 10 years now since the last South West London CAMRA Pub Guide and it looks unlikely there'll ever be another one in the present format. The way forward is for smaller guides covering just parts of a CAMRA branch area. North London have followed this path with their essential guides to Holborn/Bloomsbury and N1 and this is a start for South West London. It covers all pubs down the Northern Line from Balham to Morden, taking in the whole of the SW12 and SW17 postal districts, all of SW19 south of the main line railway from Waterloo and Morden SM4.

I've always thought that some of the very best pubs in London were on the Northern line and this book proves it. Don't start thinking, 'God, what a hell of an area!' It might be uncharted as far as you are concerned but it is definitely a part of London to explore.

There are as the guide describes some wonderful pubs – treasures – and full of historical interest as well as good ale. Sadly, there are also great patches still of pubs with schoolboy joke names selling schoolboy joke drinks. Never mind, these are mentioned briefly and you'll know well to avoid them. But who knows – one day?

Let me give you a few examples of some intriguing pubs. Obviously this area has a good number of Young's pubs; one such is the cheery Nightingale in Balham. Then there's the CAMRA National Inventory King's Head in Tooting. The award winning Sultan in South Wimbledon is the only Hop Back pub in London and the little Trafalgar is in Nelson country close by. And how about a genuine Irish pub with real ale: Ganley's Irish Bar in Morden? You'll find in the guide a great number of surprises (although funnily enough no pub of that name), some fascinating descriptions, important details, maps and photographs.

Don't be a Goon. Go on, treat yourself. At £2.00 the guide costs less than most pints. Hop on the Northern Line, no liberty lost passport or ID necessary for this Gateway to the South!

Robin Forshaw-Wilson

LONDON PUB WALKS

This book contains 30 walks, each of five to eight or so pubs, mainly in and around central London. It is the idea of Bob Steel, a member of CAMRA's Croydon & Sutton Branch, who researched it all, sold the idea to CAMRA books and

worked with the other London branches of CAMRA to refine the final product. I understand that although he is a regular contributor to newsletters etc, this was Bob's first attempt at a full-scale book and he is to be congratulated for producing a really top quality work.

For those of you who remember early CAMRA guides such as the one to the Waterways, this bears absolutely no resemblance whatsoever. It is beautifully, almost overpoweringly, produced in colour throughout, with some excellent photos and artistic but still practical maps. It also includes some interesting supporting articles and is very strong on pub history and heritage.

Whether you are a visitor or a Londoner who needs to entertain visitors, or just yourself for that matter, this book is well worth having. Perhaps not all of the pubs listed would be automatic Good Beer Guide entries but that does not detract from its purpose. I recommend it unreservedly and if the editor remembers to grab back the review copy from me, I will happily pay £8.99 for my own copy.

I apologise to those who wanted to buy a copy at the Battersea Beer Festival but it was not made available to us because its launch was part of National Pubs Week's campaigning ten days later. It can be obtained from CAMRA HQ easily enough.

Tony Hedger

WEST LONDON PUB GUIDE

- ◆ Lists 1310 pubs (1/4 of London)
- ◆ Contains 48 maps
- ◆ Every pub located on a map (except Heathrow Airport pubs)
- ◆ Has 230 pub photos

Covers:

WEST END – WC1, WC2 & W1 (440 pubs)

Covent Garden, Soho, Mayfair, Bloomsbury, Holborn, Marylebone etc

ALL W POSTAL DISTRICTS (374 pubs)

Paddington, Maida Vale, Kensington, Hammersmith, Chiswick, Ealing etc

WEST MIDDLESEX DISTRICTS (496 pubs)

Twickenham, Teddington, Hampton, Feltham, Heathrow Airport, Uxbridge, Hayes, Hounslow, Harrow, Wembley etc.

Copies from WLPG, 30 Whitton Rd, Hounslow TW3 2DA, price £5.95 (£4.95 for CAMRA Members – quote membership number) plus 60p p&p with cheque payable to CAMRA West London Pub Guide, or order from CAMRA HQ on 01727 867201 or at www.camra.org.uk/shop





CAMRA West Middlesex Branch is pleased to announce that the 17th Ealing Beer Festival "**Beer on Broadway**" will be held in the Town Hall, New Broadway, Ealing, London, W5 **10th–13th May 2006** with about **120 Cask Beers**, Ciders & Perries, draught & bottled Foreign beers, & **RAiBs**

Large halls, more space and plenty of seating.

Open from 5:00 pm to 11:00 pm on the 10th May,
11:00 am to 11:00 pm on the 11th & 12th May
and 11:00 am until 9:00 pm on the 13th May.

We will have a wide range of hot and cold foods

Help from **CAMRA** volunteers is required between 7th and 14th May 2006.

More details from Graham Harrison on +44 (0) 7971 547738 or at <http://www.beeronbroadway.org.uk> or <http://www.westmidx-camra.org.uk>

RUN, PIGLET, RUN!

Leyton Orient's team may have problems satisfying their fans, but their supporters' club bar certainly doesn't.

February saw the 2nd Piglet Beer Festival of this season take place, and with support from East London & City CAMRA it was a rip-roaring success. Club bar manager Mike Childs managed to source over 30 unusual beers plus Pitfield cider. Around 3,000 pints were drunk, 80% up on the first festival that took place last December.

I am assured that there will be more of these events after this season, with the next one planned for October. Now, if only the players moved as fast as the beer!

Mick Lewis

LONDON FOR FREE - MORE POUNDS TO SPEND ON BEER

CITY TREASURES

This excursion should be planned around the days that the recommended pubs and attractions are open. In an historic area of London, you will find many things to see and do, so make good decisions about what suits you best.

Prince Henry's Room (17 Fleet Street, London EC4; Blackfriars Tube) is a treasure often overlooked, as it's on the first floor of an ancient building in Fleet Street, one of the few to survive the Great Fire of London in 1666. Under the aegis of the Corporation of London, this little known attraction was 'part of the property granted to the Knights Templar, which in 1312 passed to the Knight Hospitallers of the Order of St. John of Jerusalem', according to the Corporation's web site (www.cityoflondon.gov.uk/corporation/leisure_heritage/architecture). Walk up the stairs of the private office building to see a room allegedly set aside for use by Henry, Prince of Wales, in 1610. Other clues to the Prince's identity include the three feathers symbolizing the Prince of Wales and 'the letters PH in a star-shaped border'. On my visit there, I was regaled with stories about the Prince, Samuel Pepys, who was born nearby, and Charles Dickens. The well-versed guide who met us is a retired man who worked on Fleet Street for 40 years; he comes to London two days a week from Kent to greet visitors to the room. You may be the sole visitors there, so take advantage of this time and the guide's knowledge to ask questions about the room and exhibits.

Samuel Pepys, the eponymous diarist and man-about-London, was born in Salisbury Court, Fleet Street, in early 1633. The exhibit honouring Pepys was opened in 1975 and consists of 'contemporary items, prints and paintings depicting the diarist and the London in which he lived'. Having seen the Pepys Exhibit at the Museum of London and read about his influence on the Royal Navy while visiting Greenwich, I believe that this venue complements what I had learned about Pepys before. The room is free of charge and open to the public Mon-Fri, from 11am to 2pm. For more information, ring 020-7936 2710 or consult the web address given above. Note the street address carefully, as you can easily pass the narrow door and stairs leading to Prince Henry's Room.

Having visited a property once owned by the Knights Templar, head for a beer and perhaps a meal at a nearby Wetherspoon's pub called the **Knights Templar** (95 Chancery Lane; 020-7831 2660; Chancery Lane Tube). A pub in the legal district which is open on Saturday is enough of a rarity to note. This huge Wetherspoon's has the value-for-

money menu we all know plus the variety of reasonably priced beer. In addition, it is spacious, with an upstairs seating/dining area, and exceptional loos downstairs; I know that the Ladies has won 'Loo of the Year', a well-deserved award! I don't normally take photos of loos but had to show my husband how special its design and materials are.

Everyone knows the Knights Templar from the 'Ivanhoe' novel by Sir Walter Scott and the subsequent films, but this area of London was where their headquarters was located. **The Temple Church** ('off street' between Fleet Street and the River Thames) 'was built by the Knights Templar, the order of crusading monks founded to protect pilgrims on their way to and from Jerusalem in the 12th century', according to The Temple Church's website (www.templechurch.com/pages/history.htm). If you wish to visit this building filled with history, it is open 'generally Wednesday - Sunday'; however, call the Verger at 020-7353 3470 to make certain that the church will be accessible when you plan to come. The Inner Temple Garden is open weekdays from 12.30 to 3pm; see the interactive web site www.innertemple.org.uk/garden/garden_plan.html

De Olde Mitre

Ely Court, between Ely Place
and Hatton Garden,
London EC1N 6SJ
020 7405 4751

Historic and traditional Ale-House
CAMRA Listed • Cask Marque Award

*Adnams Bitter and Broadside
and Deuchars IPA always
available*

**Commemorative ales will be
available throughout the
next two months**

**and remember we are open for the
GBBF weekend 4th & 5th August**

**Open 11-11pm Monday to Friday
(try our famous toasties)**

Nearest tubes: Chancery Lane/Farringdon

Beer Festival at the Bread & Roses

Thursday April 21st to Sunday April 23rd

The Supreme Champion Beers of Britain

1990-2005 will be available at the pub over the weekend for all our customers

Ind Coope Burton Ale, Black Adder, Woodfordes Norfolk Nog & Wherry, Timothy Taylors Landlord, Cottage Normans Conquest, Mordue Workie Ticket, Coniston Bluebird, Black Cat Mild, Oakham JHB, Caledonian Deuchars IPA, Harviestoun Bitter & Twisted, Kelham Island Pale Rider, Crouch Vale Brewer's Gold.

In addition, Roger Protz, editor of the Good Beer Guide, will be giving tutored beer tasting seminars upstairs at the pub for £8.00 a ticket (cost includes the six beers tasted) on Friday April 22nd at 8pm.

Terrific food served all weekend from the Bread and Roses kitchen, to complement the award-winning beers.

Call Ben or Chris on 020 7498 1779 info@breadandrosespub.com



CROYDON UNISON SOCIAL CLUB 1st CUSC BEER FESTIVAL 21ST TO 23RD APRIL 2006



Around 20 beers from micro-breweries (all at £2.00 per pint)

Friday 21st April 6pm to 11pm
£3.00 in advance, £4.00 on the door



Saturday 22nd April 12pm to 3pm
£2.00 in advance, £3.00 on the door

Saturday 22nd April 6pm to 11pm
£3.00 in advance, £4.00 on the door

Sunday 23rd April 12pm to 3pm
Free admission

**Food available at all sessions
Entertainment**

Tickets available from:

Croydon Unison Social Club, Chatsworth Hall, Chatsworth Road, Croydon CR0 1HE

Please state which sessions you require tickets for and make cheques payable to Croydon Unison Social Club

Please note that ticket numbers are limited to 100 per session



Croydon Unison Social Club, Chatsworth Hall, Chatsworth Road, Croydon
About 10 minutes walk from East Croydon Station
Telephone no. 020 8688 8142



LONDON FOR FREE - MORE POUNDS TO SPEND ON BEER

An unusual note about the garden: in its three acres is a War of the Roses border with 16 red rose plants to represent the House of Lancaster and 16 white rose plants to represent the House of York, bordered by Rosa Mundi, a red/pink/white rose representing the coming together of the two Houses after the war.

For an unusual place to visit, then go to the **London Silver Vaults** (Chancery House, Chancery Lane, London WC2; Chancery Lane Tube). On my first visit to the Vaults, I heard a customer being quoted £550 for one item, a bit out of my price range! However, I loved looking at the 37 different shops in the guarded vaults on the premises of Chancery Lane Safe Deposit, opened in 1876 to safeguard valuables of wealthy Londoners. The web site (www.thesilvervaults.com/home.htm) claims that there has never been a robbery here, quite a statement to make! If you like to window shop or to buy silver, antique or modern, here is the place for you.

For your last beer in the vicinity, go to the **Seven Stars** (53-53 Carey St., WC2; Chancery Lane Tube; 020-7242 8521). Built in 1602, this building also survived the Great Fire of London. Open Mon-Sat from 11am to 11pm and closed Sunday, the pub serves Adnams and guest beers. Of course, it is a 'local' of the people working in the law courts nearby. Ladies, beware: the loo is located up very steep steps and is quite cramped—quite a change from the Ladies at The Knights Templar but certainly in keeping with the age and character of this wonderful pub. The 'London Regional Inventory' describes it as 'Grade II listed' and as a 'famous old pub north of the Royal Courts of Justice'. However, the Seven Stars, recommended to us by the landlord of a favourite pub in another area of Greater London, is well worth the visit just to see what an authentic pub was - and still is.

© 2005 Judith Black

Advertise in the next LONDON DRINKER

Our advertising rates are as follows:

Whole page £260 (colour) £220 (mono), Half page £150 (colour) £110 (mono)

Quarter page £80 (colour) £55 (mono)

Phone Peter Tonge now on 020 8300 7693

Pakenham Arms

1 Pakenham Street, London WC1X 0LA

Tel: 020 7837 6933

Email: enquiries@pakenhamarms.com



The Pakenham Arms, a genuine free house and a great locals' pub. Newly refurbished and decorated, come and see our changes!

- try our excellent home cooked food from our new spring menu
- some of London's best ales on offer including Fuller's, Greene King, Adnams, Charles Wells plus exciting guests.
- Watch out for monthly charity Quiz Nights
- Open early from 9am for breakfast
- Late nights weekends until 2am



Live Entertainment
Thursday - Saturday

Large Quiet Bar and
No Smoking area
available at all times

Organised by
South East London Branch of
Campaign for Real Ale
www.selcamra.org.uk

Admission:
Wed: £1.50

CAMRA Members £0.50
Thurs: after 5pm £2.50
CAMRA Members £1.50
Friday: after 5pm £3.50
CAMRA Members £2.50
Sat: Free all day

Opening Times:
Wed 5pm - 11pm
Thurs - Sat noon - 11pm

Dear Editor

A couple of thoughts prompted by your items about attracting younger people to real ale.

The worst thing to do is to let a bunch of old farts in the marketing department think they can concoct some new brews that will attract young folk today. In my view this is what resulted in Ridleys doing away with a perfectly good range of beers and replacing them with a sticky and bland IPA, an indescribable strong bitter not a bit like the strong pale ale - Old Bob - that it was named after and the affected coriander confection, Prospect. The failure of these beers to keep the existing custom and their equal failure to attract anybody new resulted in Ridleys weakness when they followed former Essex brewers Grays and Rayments into the maw of Greene King.

The idea that it is the pub, rather than the beer, that attracts new and younger people to real beer is borne out by the history of Wetherspoons. When they started they attracted a young crowd on Friday and Saturday nights. Folks on the cusp of education and work found the 'bring your own atmosphere' approach ideal for gathering together before going on to parties, clubs and the like. They filled the time, and themselves, with quantities of Youngers Scotch bitter at 99p a pint. OK, later that night they got stuck in to Diamond White or WKD and then moved on to herbal or pharmacological pleasures, but a start had been made.

One final thing. Young people do have money to burn, but so do a lot of older folks. It may be that the brewers' commercial nous isn't so far wrong when they pitch real beer at those still in work but with the kids flown the nest. It may be that you just have to grow up and have the disposable income before you can appreciate ales.

Nik Wood, London E9

Dear Editor

Following on from Roy Fenton's *Real Ale and the Morris* in the Feb/March edition of LD I feel I should report on another scarce form of a particularly English dance. That is Northern Soul; it may not have the centuries of history behind it as does the noble art of the Morrismen/women, but in its own way it does have a similar dedicated following. For those who have never heard of it, it is particular type of soul music mostly from the early and mid 1960s but encompassing some funk and early disco. The most important thing about northern soul is the dancing, it may be a great song but if you can't dance to it, what's the point. I have recently got back into the Northern scene and I'm sorry to report there is a distinct lack of real ale represented at the various venues throughout

Greater London. One exception is the Castle Soul Club (blatant plug) held on the last Friday of every month at the Castle, 38 Tooting High Street, across the junction from Tooting Broadway tube station. This excellent Young's pub has the full range of Young's beers including seasonals. The soul nights are held in the function room to the rear of the pub but there is access to the pub bar. So, to any ex-soulies out there, come along and be reminded what you've been missing.

Simon Stevenson

Dear Editor,

Fullers takeover of Gales

Whilst I am saddened at the loss of jobs at Horndean, and at the erosion of choice for real ale drinkers, I am eagerly anticipating the relocation of brewing to Chiswick.

Usually beer quality goes down upon relocation but I bet that HSB, Festival Mild etc out of Chiswick will be improved beers. Please, Mr Keeling, (*Fuller's Brewing Director - Ed*) don't replicate the beers too "authentically" - can we have the HSB (CSB?) of the early eighties, please?

Thank you

Bob Selwood, Aldershot



realale.com



**AN ALE IS NOT JUST
FOR CHRISTMAS**

*CAMRA Members Discount -
Register online today!*

**020 8892 3710
info@realale.com**

BRANCH DIARIES

Welcome to our regular details of London CAMRA contacts and events. This is where branches can say what is happening in their areas that might be of interest to drinkers across London. Events for April and May are listed below.

Branch meetings and socials are open to all - everyone is welcome to come along.

LONDON REGIONAL MEETING

May - Wed 31 (8pm) London Liaison Committee (Regional co-ordination meeting for London Branches). Royal Oak, Tabard St, SE1. *Secretary: geoff@coherent-tech.co.uk*

ALL LONDON YOUNG MEMBERS' SOCIAL

April - Tue 18 (7pm) Crosse Keys, Gracechurch St, EC2. *Contact Paul Johnson: operationmindcrime060804@yahoo.co.uk*

LONDON PUBS GROUP *Jane Jephcote 020-7720 6327, jephcotej@hotmail.co.uk*

April - Wed 19 Evening Crawl of W1 Marylebone: (7pm) George, 55 Great Portland St; (7.45) Stag's Head, 102 New Cavendish St; (8.15) Dover Castle, 43 Weymouth Mews; (9pm) Golden Eagle, 59 Marylebone Lane; (9.30) Tudor Rose, 44 Blandford St; (10pm) Barley Mow, 8 Dorset St. **May - Wed 17 (7.15 for 7.30)** Mtg. Royal Oak, Tabard St, SE1 (upstairs). All branches and members interested in pub research and preservation welcome. *Website: www.londonpubsgroup.co.uk*

BEXLEY *Martyn Nicholls 01322 527857 (H), contacts@camrabexleybranch.org.uk*

April - Wed 12 (8.30) Mtg. Blue Anchor, Bexley. - **Fri 21 - Sun 23** First Bexley Beer Festival, Sidcup Sports Club, Crescent Farm, Sydney Rd, Sidcup
May - Wed 10 (8.30) Mtg. Robin Hood & Little John, Bexleyheath. *Website: www.camrabexleybranch.org.uk*

CROYDON & SUTTON *Terry Hewitt 020-8660 5931 (H), 020-7126 4448 (W)*

April - Mon 3 (8.30) Beer Festival Working Party. Dog & Bull, Surrey St, Croydon. - **Wed 5 (8.30)** Social. Claret, Lower Addiscombe Rd, Addiscombe. - **Thu 20 (8.30)** Social. Robin Hood, West St, Sutton. - **Tue 25 (8.30)** Branch AGM. Dog & Bull, Surrey St, Croydon (upstairs room)
May - Mon 22 Beer Festival Working Party. Dog & Bull, Surrey St, Croydon. - **Thu 1 June (8.30)** Mtg Windsor Castle, Carshalton. *Website: www.croydoncamra.org.uk*

EAST LONDON & CITY *John Pardoe, elacbranch@yahoo.co.uk*

April - Tue 11 (8pm) Branch & Pigs Ear Festival mtg. Nags Head, 9 Orford Rd, E17 (in marquee behind pub). - **Fri 14 (8pm)** Joint social with North London. Oakdale Arms Beer Festival, 283 Hermitage Rd N4. - **Sat 22** Social to Maldon, Essex, visiting the Beer Festival and pubs in the village (groups of 4 will cost £7.60 pp for train and bus pass). Email branch for departure times or to come along.
May - Tue 2 (8pm) Pigs Ear Festival mtg. Birkbeck Tavern 45 Langthorne Rd, E11. - **Sat 6** Walthamstow E17 Mild Day social: (8pm) Castle, corner of Eden Rd and Grosvenor Rise East; then Nags Head (check out the milds at the Nags Head throughout May). - **Tue 9 (8pm)** Branch AGM. Birkbeck Tavern, E11. - **Tue 16 (8pm)** Triple branch Mild Month social with North London and Enfield & Barnet. Pembury Tavern, 90 Amhurst Rd, E8. *Website: www.pigsear.org.uk*

ENFIELD & BARNET *Sandie Ward 020-8884 0075 (H)*
April - Sat 1 (1-6.30pm) Barnet Elizabethan Rugby Football Club, Byng Rd, Barnet EN5. - **Tue 4** New Crown, 80-84 Chase Side, Southgate N14. - **Wed 12** N20 Three pub social: (8.30) York Arms; (9.15) Rising Sun; (10pm) Cavalier. - **Wed 19 (8.30)** Jolly Butchers, 168 Baker Street, EN1. - **Sat 22** Wanderings around Ware. Meet (10.45) Waltham Cross Bus Station (contact Owen Woodliffe 020-8529 4454 for details). - **Thu 27** New Barnet two pub social: (8.30) Bailey, 187 Victoria Rd; (9.30) Lord Kitchener, 49 East Barnet Rd.
May - Wed 3 Mild social, Madden's, East Finchley, N2. - **Sat 6** Joint Richmond crawl with Richmond and Hounslow. Meet (12noon) Orange Tree, 45 Kew Rd. - **Thu 11** Mild social, Orange Tree, Highfield Rd, Winchmore Hill N21. - **Tue 16 (8pm onwards)** Joint Social with ELAC and North London, Pembury Tavern, 90 Amhurst Rd, E8. - **Wed 24 (8.30)** Mild social. Winchmore Hill Cricket Club, The Paulin Ground, Fords Grove (access from Firs Lane) N21 (CAMRA MEMBERS ONLY: BRING MEMBERSHIP CARD). - **Thu 1 June** Social and *London Drinker* pick up. Old Mitre, 58 High St, Barnet.

KINGSTON & LEATHERHEAD *Clive Taylor*

0208.949.2099, (H) 0208.540.1901 (W), clive@paylor2005.wanadoo.co.uk, kandle@camrasurrey.org.uk
April - Tue 4 (8.15) Branch mtg. Royal Oak, Coombe Rd, New Malden. - **Sat 22 (12 noon)** Visit to Young's Brewery, Wandsworth. Charge of £5.50 in advance.
May - Tue 9 (8.15) Branch mtg. Rising Sun, Heathcote Rd, Epsom. - **Thu 18 (8pm)** Kingston mild crawl. Meet Porter Blacks, on river front, then to other nearby pubs.
Wed 24 - (8pm) Claygate crawl. Meet Foley Arms, then to Hare & Hounds, Winning Horse, and Griffin. - **Fri 26 (8pm)** Joint mild evening with SW London. Trafalgar, High Path, South Wimbledon. *Website: www.camrasurrey.org.uk*

NORTH LONDON Social contact: Mike Rose 07986 45817, mike@wrose@blueyonder.co.uk; Branch contact: John Cryne 020-8452 6965, john.cryne@uk.pwc.com

April - Tue 4 (8pm) Branch mtg and Pub of the Year selection. Three Compasses, 62 High St, N8. - **Tue 11 (8pm)** New Members Social (all welcome: free pint for new members). Wenlock Arms, 26 Wenlock Rd, N1. - **Fri 14 (8pm)** Joint Good Friday social with ELAC. Oakdale Arms Beer Festival, 283 Hermitage Rd, N4. - **Tue 25 (8pm)** Wellington, 119 Balls Pond Rd, N1; then Talbot, 109 Mortimer Rd, N1.
May - Tue 2 N4 Mild Month social: (8pm) Salisbury, 1 Grand Parade, Green Lanes; then Oakdale Arms, 283 Hermitage Road. - **Tue 9** N1 Mild Month Social: (8pm) Narrow Boat, St Peter's St; then Island Queen, Noel Rd; Charles Lamb, Elia St. - **Tue 16 (8pm)** Joint Mild Month social with ELAC and Enfield & Barnet. Pembury Tavern, 90 Amhurst Rd, E8. - **Tue 23 (8pm)** Mild Month social. Wenlock Arms, 26 Wenlock Rd, N1. - **Tue 30** Euston NW1 Mild Month social: (8pm) Euston Flyer, 83 Euston Rd; then Head of Steam/Doric Arch, Euston Station Colonnade. *Website: www.camranorthlondon.org.uk*

RICHMOND & HOUNSLOW *Brian Kirton 020-8384 7284 (H), sk014j4253@blueyonder.co.uk*

April - Thu 6 (8pm) Social. Goat, 241 Hampton Rd, Twickenham. - **Thu 27 (8pm)** Branch AGM. Fox, 39 Church St, Twickenham.
May - Thu 11 (8.30) Branch mtg. Halfway House, 24 Priests Bridge, East Sheen. - **Sat 20 (9.30am)** Beer Festival workers outing to Brighton via W J King brewery at Horsham, Branch contact for details. - **Thu 25** Kew crawl: (8pm) Inn on Kew Gardens, 292 Sandycroft; then (8.45) Railway, Station

BRANCH DIARIES

Parade; (9.30) Coach & Horses, 8 Kew Green.

Website: www.camra.org.uk/richmond

SOUTH EAST LONDON. Roz Cox 07796 272730 (or 0208-697 6939 eve or weekends only), email roz@selcamra.org.uk

April – Mon 3 (8pm) Cttee mtg and social. Gowlett, 62 Gowlett Rd, SE15. - **Tue 11** (8pm) Social and 2005 PotY presentation. Market Porter, 9 Stoney St, SE1. - **Thu 20** (8pm) Social Sovereign of the Seas, Queensway, Petts Wood. - **Tue 25** (8pm) 2006 Catford Beer Festival planning mtg and social. Roses, 49 Hare St, SE18.

May – Tue 2 Social: (8pm) Sydney Arms, Old Perry St, Bromley, then Tigers Head, Watts La, Chislehurst. - **Mon 8** (8pm) Cttee mtg and social. Pommeliers Rest, 196-198 Tower Bridge Road, SE1. - **Sun 14** Lewisham Walking Festival. Meet (7pm for 7.30 start) Watch House (Wetherspoons) 198-204 Lewisham High St, SE13. A gentle crawl also visiting the Jolly Farmers, London & Rye and the Catford Ram. - **Thu 18** Lewisham Walking Festival. Meet (6.30 for 7pm start) Brockley Barge (Wetherspoons), 184 Brockley Rd, SE4. Three pubs and two hills, so a good thirst can be worked up while admiring the views, ending at the Blythe Hill Tavern, 319 Stanstead Rd, SE23. - **Mon 22** (8pm) Catford Beer Festival planning mtg. Ashburnham Grove, SE10.

Website: www.selcamra.org.uk

SOUTH WEST ESSEX. Andrew Clifton 01708 765150 (H), swessex@clara.co.uk

April – Tue 4 (8pm) Out of area social. Royal Oak, 44 Tabard St, SE1. - **Wed 12** (8.30) Social. Britannia, 1 Church Rd, Barking (off Ilford La/Fanshawe Ave). - **Wed 19** (8pm) Social. Maldon Beer Festival, Town Hall, Market Hill, Maldon (for more details see www.dengiecamra.org.uk/festival.htm). Coach from Chadwell Heath, Romford, Upminster and Stanford le Hope. Details/bookings contact Graham Platt on 020-8220 0215. - **Thu 27** (8.30) Out of area social. George, 159 High St, Wanstead.

May – Thu 4 (8.30) Social. Traitors Gate, 42 Broadway, Little Thurrock. - **Thu 11** (8.30) Social. JJ Moons, 48/52 High St (A124), Hornchurch. - **Tue 16** (8.30) Social. Cricketers, 299-301 High Rd (A11), Woodford Green. - **Wed 24** (8.30) Social. Eva Hart, 1128 High Rd (A118) (junction with Station Rd (A1112)), Chadwell Heath. - **Thu 1 June** (8.30) Out of area social. Molettrap, Tawney Common, Theydon Mount (OS: TL501014).

Website: www.swessex.clara.net

SOUTH WEST LONDON Mark Bravery 020-8540 9183 (H), 020-7147 2860 (W), markbravery@blueyonder.co.uk

Cricket contact: Martin Frost 07748 183772 (New players welcome for Sunday afternoon matches starting in May) **April – Wed 5** (7.30) Open branch cttee mtg. Windmill on the Common, Clapham Common South Side, SW4. - **Thu 27** (7.30) Branch Pub of the Year social and presentation, Grapes, 39 Fairfield St, Wandsworth SW18.

May – Thu 11 (7.30) Open branch cttee mtg followed (8pm) by Branch AGM. Priory Arms, 83 Lansdowne Way, South Lambeth SW8 (upstairs room). Written nominations to reach Branch Contact no later than 10 May. - **Fri 26** (7pm) Joint Mild Month social with Kingston & Leatherhead. Trafalgar, 23 High Path, Merton SW19.

Website: www.swlcamra.org.uk

WATFORD & DISTRICT Andrew Vaughan 01923 230104, 07854 988152 (M), branch@watfordcamra.org.uk

April – Tue 4 Watford High Street pub crawl: (8.30) Moon Under Water; (9.15) Counting House; (9.45) One Bell;

(10.30) One Crown. - **Tue 11** Abbots Langley social: (8.30) Swan, College Rd; (9.15) Compasses, 95 Tibbs Hill Rd. - **Mon 24** (8.15) Branch mtg. Estcourt Arms, St. John's Rd Watford. - **Sat 29** (from 1pm) Weekend social. Rose & Crown, Hatfield Rd, Rickmansworth.

May – Wed 10 Ealing Beer Festival social, Ealing Town Hall. Meet (6pm and hourly thereafter) Products stand. - **Tue 16** (8.30) Paper Mill, Stationer's Place, Apsley. - **Mon 22** (8.15) Branch mtg. Estcourt Arms.

Website: www.watfordcamra.org.uk

WEST LONDON Alasdair Boyd (Social Secretary) 020 7930 9871 ext 143 (9am-2.45/6pm-9.30 Mon-Fri or leave message), banqueting@nlc.org.uk Fax 020-7839 4768. Branch Contact Kim Martin 07717 795284, kimberlymartin@yahoo.com

April – Tue 4 Branch mtg (7.45 sharp) Nell of Old Drury, 29 Catherine St, WC2 (upstairs room). - **Fri 14** (12 noon at entrance) Visit to Inaugural Planet Thanet Ale Fest, Gallery Iota, Western Esplanade, Ramsgate. - **Tue 18** 4th West London Beer Fest planning mtg (7.30), Carpenters Arms, 12 Seymour Place, W1 (upstairs room). - **Sat 22** (11.30 at Foreign Beer Bar) Social at 1st Bexley Beer Fest, Sidcup Sports Club, Crescent Farm, Sydney Road, Sidcup. - **Tue 25** W8 Tour: (7.30) Windsor Castle, 114 Campden Hill Rd; (8.15) Churchill Arms, 119 Kensington Church St; (9pm) Elephant & Castle, 40/42 Holland St; (10.15) Uxbridge Arms, 13 Uxbridge St. - **Sat 29** (12 noon Cider Bar) Trip to Reading Beer Fest, Kings Meadow, Napier Rd.

May – Tue 2 W14: (7.30) Radnor Arms, 247 Warwick Rd; (9.30) Crown & Sceptre, 34 Holland Rd. - **Wed 10** West End: (7.30) Angel, 61/62 St Giles High St, WC2; (9.30) Cambridge, 93 Charing Cross Rd, WC2; (10.15) Spice of Life, 37/38 Romilly St, W1. - **Tue 16** SW3 Chelsea: (7.30) Coopers Arms, 87 Flood St; (8.45) Resident, 23 Smith St. - **Thu 25** Branch mtg (7.30 sharp) followed by AGM (both upstairs) Jugged Hare, 172 Vauxhall Bridge Rd, SW1. - **Sun 28** WC2: (3pm) Lamb & Flag, 33 Rose St; (4pm) Harp, 47 Chandos Place; (5.30-6.45) Salisbury, 90 St Martin's La. - **Tue 30** SW1 Belgravia: (7.30) Star Tavern, 6 Belgrave Mews West; (8pm) Nags Head, 53 Kinnerton St.

WEST MIDDLESEX David Bender 07734 509111 or contact@westmiddx-camra.org.uk

April – Thu 6 (8.30) Social. Star, Uxbridge Rd, Hillingdon. - **Wed 12** (8.30) Mtg. Drayton Court, The Avenue, West Ealing. - **Fri 14** (6pm) Beer Festival. Fox, Green La, Hanwell. - **Thu 20** BOB Publicity Crawl. Start (8pm) Ealing Park Tavern, South Ealing Rd, Ealing. - **Tue 25** BOB Publicity Crawl. Start (8pm) Wheatshaf, Haven La, Ealing. - **Fri 28** BOB Publicity Crawl. Start (8pm) Duke, South Parade, Chiswick.

May – Mon 1 BOB Publicity Crawl. Start (12noon) Kings Arms, Park Ln, Harefield. then (5pm) Good Yarn, High St, Uxbridge. - **Wed 10-Sat 13** Ealing Beer Festival. - **Thu 18** (8.30) Social. Crown, Colham Green Rd, Uxbridge. - **Wed 24** Ickenham two pub social: (8pm) Coach & Horses, High Rd; (9.30) Tichenham Inn, Swakeleys Rd. - **Tue 30** Cranford High St two pub social: (8pm) Queens Head; (9.30) Jolly Gardeners. - **Fri 2 June** (8pm) London Drinker pick up. Maggie & Crown, High St, Brentford; then (9.30) Fox, Green La, Hanwell.

Advance notice: Wed 14 June (8pm) Branch AGM. Conservative Club, Fairlawn, Southall.

Website: www.westmiddx-camra.org.uk

Electronic copy deadline for the June/July edition: 17th May 2006. Please send entries to geoff@coherent-tech.co.uk.



RELAX

**we haven't
changed the beer**

Young's Bitter

has always been a favourite,
so we thought it deserved
a smart new look.

Look out for our

new brand identity

gracing discerning bars

everywhere – confident

that it's the same

great pint of bitter

you've come to

expect from

Young's.

THIS IS A RAM'S WORLD

youngs.co.uk



The aim of 'Capital Pubcheck' is to share information about the latest happenings on the London pub scene including new pub and bar openings, name changes, acquisitions, closures, notable changes to beer ranges etc. Information is gathered from a variety of sources including London Drinker readers, individual CAMRA members and branch contacts, breweries, pub operators, landlords etc. If you would like to contribute to 'Pubcheck' please send your news to the address below.

This time we record 11 pubs in Central, South West and West London acquired by the expanding Capital Pub Co, nine from the Spirit Group, now under Punch control, who are busy selling off pubs. Two Wetherspoon pubs in Barnet and Twickenham have been acquired and renamed by the small Heart Vale pub company. The Edgar Wallace pub in WC2 is fully exploiting the deal allowing SIBA brewers to supply micro products to Enterprise pubs. A second pub, this time in WC1, has been acquired by the Beaujolais'. A former Davy's bar in EC1 has been converted to a Bavarian beerhouse. Fuller's have renamed a pub in W1 Mayfair. More closures and conversions to other uses are reported throughout London.

A new pub guide, *Through the Gateway to the South*,

covering SW12, SW17, SW19 (part) and Morden (SM4) down the Northern Line from Balham to Morden was published by South West London Branch in February 2006, updating the coverage of those areas in the comprehensive 1997 South West London Guide. Capital Pubcheck now includes cross references to the new guide.

Cross references to CAMRA's various pub guides covering Greater London are provided to enable easy updating. The numbers in brackets after each entry refer to the page numbers in the following guides: BM - Balham to Morden Pub Guide; E - East London & City Beer Guide, 3rd edition; H - Hertfordshire Guide to Real Ale, 2000 edition; HB - Holborn & Bloomsbury Pub Guide; IS - N1 Islington Real Ale Guide; K - Guide to Kent Pubs, 10th edition; 8K - Real Ale Guide to Kent Pubs, 8th edition; KT - Kingston Pub Guide; N - North London Beer Guide, 3rd edition; SE - South East London Pub Guide, 4th edition; 3SE - South East London Pub Guide, 3rd edition; SW - South West London Pub Guide, 2nd edition; W - West London Pub Guide, 2nd edition; X - Essex Beer Guide, 9th edition.

If you would like to report changes to pubs or beers, please write to: Capital Pubcheck, 2 Sandtoft Road, London SE7 7LR or e-mail: capitalpubcheck@hotmail.com.

NEW & REOPENED PUBS & PUBS CONVERTED TO REAL ALE

EAST

E1, HOTEL ST GREGORY, 92-102 Shoreditch High St. No real ale. Bar attached to hotel, open to public, with separate street entrance.

E1, LANE (THE), 12-20 Osborn St. No real ale. Free House/bar and restaurant attached to 'City Hotel' with separate entrance from street.

E1, LE BAR, Ibis Hotel, 5 Commercial St. No real ale. Free House/hotel bar with separate entrance for general public.

E2, CAMEL, 277 Globe Rd. Adnams: Bitter, Broadside. Reopened Free House in same ownership as FLORIST at No 255. (E79, U75, U79, U89, U158)

E8, FOX, 372 Kingsland Rd. Fuller: London Pride; W&D: Marston Pedigree. (E113)

ILFORD, BLACK HORSE, 1 Chapel Rd. Fuller: London Pride. (X72)

NORTH

N1, EDINBURGH CASTLE, 125 Newington Green. Caledonian: Deuchars IPA. Handpump is on side bar. Thai food available all day. TV for football. Ceramic tilework at side entrance survives. Formerly EDINBURGH. (N42, U159)

N1, WILLIAM IV, 7 Shepherdess Walk. Badger: Flowers IPA; Black Sheep: Best Bitter. Reopened as a Punch leased pub, ex-Bass, with reinstatement of real ale. (N62, U184)

N2, ALEXANDRA, 98 Fortis Green. Badger: Flowers IPA; Young: Bitter. Reopened with real ale. (N65)

N4, BEACONSFIELD, 357 Green Lanes. Fuller: London Pride; Greene King: IPA. Welcome installation of real ale. (N73)

N4, CLUB IMPERIAL, Spring Park Hotel, 400 Seven Sisters Rd. No real ale. Basement bar under hotel, open to general public. Formerly BAR 400 but not previously

reported.

N4, DUKE OF EDINBURGH, 20 Fonthill Rd. Reopened and renamed RED RITA WINE BAR. H reinstalled during refurbishment but currently unused. (N73, U184)

N5, WOODBINE, 225 Blackstock Rd. No real ale. Reopened after refurbishment. (N79, U184)

NORTH WEST

NW2, CROWN HOTEL, 152 Cricklewood Broadway. Now simply CROWN. Taylor: Landlord. Former Taylor Walker pub and grade II listed, acquired by Irish Moran Hotels and Bars chain in 1998 and now connected to the newly constructed Crown Moran Hotel next door by an impressive glass and steel atrium, which gives access to the side bar that has the real ale. Live music Thurs, Fri and Sun. Address of combined pub and hotel now Nos 142-152. (N179)

NW3, ROOM SIXTY EIGHT, 68 Heath St. No real ale. Reopened as an upmarket Free House/bar and restaurant after short spells as a Chinese restaurant and then a wine bar. The original façade is still intact, as are the ornate ceilings. Originally the late lamented HORSE & GROOM, sold off by Young's in 2001. (N186, U157, U161, U171).

NW6, LONGROOM, 105 Salusbury Rd. No real ale. New Free House/bar, run by Faucet Inns, opened by May 2005.

NW6, SALUSBURY TAVERN, 50/52 Salusbury Rd. Adnams: Bitter, Broadside. Reinstatement of real ale. Formerly SALUSBURY. (N207, U109, U137)

NW9, O'HANLONS, 210 The Broadway, West Hendon. No real ale. Free House/bar in former shop unit. Originally CASEY'S BAR but not previously reported.

SOUTH WEST

SW3, TUGGA, 312 Kings Rd. No real ale. Free House/bar in former restaurant, opened by May 2005.

The Land of Liberty, Peace and Plenty Freehouse

CAMRA Pub of the Year - Watford & District

Easter Beer Festival

13th-17th April inc.

20+ ales, real cider, perry and Belgian bottled beers

Live jazz Friday evening

Hog roast and Morris Men on May Day

Real Ales, Real Food and A Real Welcome in a Real Pub!

See www.landoflibertypub.com for Real Ales on soon and future events



- ◆ Lunches
- ◆ Sunday roasts
- ◆ Large car park
- ◆ Dog friendly
- ◆ Large beer garden
- ◆ Real log fire
- ◆ Over-sized lined glasses
- ◆ No under 14s in bar

The Land of Liberty, Peace and Plenty

Long Lane, Herongate, Hertfordshire WD3 5BS Tel: 01923 282226

$\frac{2}{3}$ mile M25 junction 17, follow sign to Herongate; 1 mile Chorleywood station

Ye Olde Monken Holt

193 High Street, Barnet, Herts EN5 5SU

Tel: 020 8449 4280

Email: enquiries@yeoldemonkenholt.com



Ye Olde Monken Holt is the place to be in Barnet!

- Try our fantastic quiz nights on Thursdays - cash prizes and our Grand Final on 4th May.
- Friday is Disco Fever with DJ Nick spinning his favourite tunes
- Saturday - Blues, jazz and rock n' roll bands playing an eclectic mix of sounds
- Chilled out Sundays with Frances' great home cooked roasts, followed by our acoustic evening.
- BBQs over Easter in our lovely beer garden.
- Real Ale Festival in May with plenty of live events and fabulous beers...watch this space!

CAPITAL PUBCHECK - UPDATE 188

SW4, XIAN, 32 Abbeville Rd. No real ale. Free House/bar and Chinese restaurant in former shop unit, opened by September 2005.

SW5, COLEHERNE, 261 Old Brompton Rd. Fuller: London Pride. (SW62)

SW6, COCK, 360 North End Rd. Fuller: London Pride; Greene King; IPA; Guest beer. Acquired by Capital Pub Co from Spirit in January with welcome reinstatement of real ale. Formerly a S&N pub. (SW66, U158)

SW16, PERFECT BLEND, 8/9 Streatleigh Parade, Streatham High Rd (near Streatham Hill Station). No real ale. A Free House/gastropub in former restaurant.

SW16, WATERFRONT, 426 Streatham High Rd. Courage: Best Bitter. (U156)

WEST

W3, COYOTE, 100/102 Churchfield Rd. No real ale. New Free House/bar and restaurant in former shop unit.

W11, RUBY & SEQUOIA, 6/8 All Saints Rd. No real ale. New Free House/bar in former restaurant.

PUBS CLOSED OR CEASED SELLING REAL ALE

CENTRAL

W1(S), LYRIC TAVERN. Now simply LYRIC, Spirit, closed, future uncertain. (W67)

EAST

E1, ARTICHOKE, ex-Watney, still closed and boarded

up. (E60, U156)

E1, CASTLE, Free, H unused. (E62)

E1, HUNGERFORD ARMS, ex-Watney, no real ale. (E68)

E1, QUEENS HEAD, 57 Greatorex St, ex-Phoenix, confirmed demolished and now residential block under construction. (E71, U112, U155, U164)

E1, SEVEN STARS, 112, Whitechapel High St, ex-Taylor Walker, demolished and site used for a temporary car park. (E73, U153)

E1, THOMAS NEALE, Free, H unused. (E74)

E10, OLIVER TWIST, ex-Whitbread, closed and boarded up. (E125, U80, U86, U179)

E12, PHARAOHS BAR, Free, ground floor now converted to pharmacy with residential above. Formerly LJ'S BAR, originally THREE RABBITS. (E133, U100, U117, U131, U143, U159)

E17, COACH & HORSES, Enterprise, ex-S&N, closed and boarded up. (E166, U106, U168)

ILFORD, BLUE ICE, ex-Whitbread, H now removed. Formerly PROVOKE, originally HOGSHEAD. (X73, U162, U185)

NORTH

N3, INNISFREE, Free, closed, future uncertain. Formerly LEGENDS. (N69, U152)

N7, DEVONSHIRE CASTLE, Enterprise, ex-Truman, closed. (N86)

The Magpie & Crown

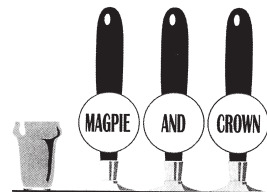


- ◆ Draught Budvar, Hoegaarden, Paulaner Münchener Lager & Bavarian Wheat Beer
- ◆ Quiz Night Thursday
- ◆ Bar billiards
- ◆ Cycle rack
- ◆ 2006 Good Beer Guide
- ◆ Beers from Grand Union and Twickenham Breweries
- ◆ Hours of opening: Mon-Wed 11-12 midnight, Thurs-Sat 11-1am, Sun 12-12 midnight

AT THE TIME OF THIS ADVERTISEMENT WE HAVE SERVED ~~1551~~ **1587** DIFFERENT BEERS

**128 High Street
Brentford, Middx
Tel: 020 8560 4570**

- ◆ Only 30 minutes from main line Waterloo
- ◆ 4 ever-changing guest ales
- ◆ 3 traditional ciders & the occasional perry
- ◆ Foreign bottled beers selection
- ◆ Food is back
English and Thai food is back all week



Steve and the staff look forward to seeing you soon

CAPITAL PUBCHECK - UPDATE 188

N7, SPOOFERS BAR. Renamed **METRO**, Free (Porter Black), H removed. Formerly TAPPIT HEN. (N90, U121, U155, U168)

N7, WIG & GOWN. Renamed **LIL' RED**, Free, H unused. (N91)

N9, STEPS (MURRAY'S BAR), ex-Whitbread, closed and boarded up. Formerly subtitled **KELLY'S BAR**. (N101, U160, U181)

N11, NEW SIR JOHN LAWRENCE, ex-Whitbread, closed and boarded up. Formerly **GAELIC GROUNDS**. (N107, U159)

N14, BAMBORA, Free, closed. Formerly **WELCOME INN**, originally **BRAMBLES**. (N119, U162, U169)

N14, WHITE HART, S&N, no real ale. (N120, U163, U169)

N16, CALEDONIAN, ex-Courage, converted to shop. (N128)

N16, CAVA BAR, Free, closed and for sale. (U176)

N17, CITY ARMS, ex-Taylor Walker, still closed and boarded up. (N133, U166)

N19, NEW BRUNSWICK, Greene King, H removed despite advertising 'traditional ales' on board outside. Was **PICKLED NEWT (NEW BRUNSWICK)** for a while. (N144, U109, U117, U164)

N22, DUKE OF EDINBURGH, ex-Bass, H now removed. (N155)

BARNET (EN5), GREEN MAN, McMullen, closed, future uncertain. (N250, H19)

BARNET (EN5), STABLE, Free, closed. Formerly **WISHING WELL, FIDDLERS** and **LYTTON ARMS**.

(N251, H84, U157, U160, U165)

NORTH WEST

NW3, HEATH STREET, M&B, closed and to let. Formerly **ALL BAR ONE** and **NACHOS**. Originally **NAGS HEAD**, once a **CAMRA** Investments pub. (N188, U144 U145, U171)

NW3, JACK STRAWS CASTLE, ex-Bass, ground floor now converted and for sale as 'commercial' space. Upper floors now converted and let as residential. (N186, U167)

NW4, CLADDAGH RING, ex-Taylor Walker, H removed. Refurbished in modern style with mock Irish tat also removed. (N193)

NW4, HENDON. Now **Greene King**, ex-Whitbread, H removed. (N194)

NW5, NEWBERRY ARMS, Free, now demolished. (N200, U156, U184)

NW6, BRONDESURRY ARMS, ex-Watney, now converted to residential use. (N204, U149)

NW6, DROP INN, Free, converted to religious centre. (N204)

NW6, FOLLY BAR, Regent Inns, converted to Pizza restaurant. Formerly **LA FOLIE**. (U137, U161)

NW6, TRICYCLE THEATRE BAR, Free, now bottles and wine only, no draught beer; delete from pub database. (N207)

NW6, ZD BAR, Free, closed. (U173)

NW9, KINGS ARMS. Renamed **ROWAN'S**, Enterprise, ex-S&N, H removed following refurbishment. (N218, U106, U153)

APPLICATION TO JOIN CAMRA

I/We wish to become members of the Campaign for Real Ale Limited and agree to abide by the Memorandum and Articles of Association of the Campaign.

Name(s) _____

Address _____

Postcode _____

Signature _____ Date _____



**CAMPAIGN
FOR
REAL ALE**

I/We enclose the remittance for individual/joint membership.

	Individual Annual		Joint Annual		Individual Life		Joint Life	
UK and EEC	£18	<input type="checkbox"/>	£21	<input type="checkbox"/>	£325	<input type="checkbox"/>	£378	<input type="checkbox"/>
Rest of the World	£22	<input type="checkbox"/>	£25	<input type="checkbox"/>	£396	<input type="checkbox"/>	£450	<input type="checkbox"/>
Under age 26	£10	<input type="checkbox"/>						
Unemployed/Disabled	£10	<input type="checkbox"/>	Date of birth	_____				
OAP	£10	<input type="checkbox"/>	£13	<input type="checkbox"/>	£180	<input type="checkbox"/>	£234	<input type="checkbox"/>

Send your remittance (payable to CAMRA Ltd) to:
Membership Secretary, CAMRA Ltd, 230 Hatfield Road, St Albans, Herts AL1 4LW

3 MINUTES WALK FROM THE NORTH END OF LONDON BRIDGE ...

“ *The oldest small pub
in the City of London* ”

THE BELL

29 Bush Lane, London EC4

Five cask ales always available including
Deuchars IPA, Spitfire, Young's Bitter, Courage Best
and a rotating guest beer

AND 3 MINUTES WALK FROM THE SOUTH END OF LONDON BRIDGE ...

THE WHEATSHEAF

6 Stoney Street, London SE1

A full range of Young's cask and bottled ales
and the occasional guest beer

Winner of 2004–05 Young's beer quality
and cellar management competition

“ *Boasts the best atmosphere
of any of the Borough
Market pubs* ”



THE RED CAR PUB COMPANY

CAPITAL PUBCHECK - UPDATE 188

EDGWARE (HA8), RAILWAY HOTEL, ex-S&N, closed, future uncertain. On London Regional Inventory of historic pub interiors. (N257, U106, U153)

SOUTH EAST

SE1, PRINCE OF WALES, 23 Lant St, ex-Belhaven, demolished. (SE29)

SE3, NEW TIGERS HEAD, Enterprise, ex-S&N, closed and for sale. (SE46, U107, U125)

SE4, MALT & HOPS. Renamed **ALBERTINES'S**, now Free, ex-Whitbread, H removed. (SE52)

SE6, PLOUGH & HARROW, Enterprise, ex-Bass, H unused. (SE68)

SE6, RISING SUN, Enterprise, ex-Bass, H unused. Now an Afro-Caribbean pub with ethnic food. Was **GOOSE & GRANITE** for a while. (SE68, U120, U164)

SE16, LITTLE CROWN, ex-Watney, still closed and boarded up. (SE148, U166)

SE17, ARCHDUKE CHARLES, ex-Ascot, closed and boarded up. (SE155, U113)

SE17, TEMPLE BAR, ex-Bass, H removed. (SE160, U108)

SE18, ADMIRAL, ex-Watney, closed, future uncertain. (SE164)

SE27, BRICKLAYERS ARMS, 29 Chapel Rd, ex-Bass, closed and boarded up. (SE228)

SE27, JACK STAMPS BEER HOUSE. Now simply **JACK STAMPS**, Faucet Inns, closed and boarded up. Formerly **G E ALDWINKLES** and originally **THURLOW ARMS**. (SE229, U102, U121, U138, U168)

CROYDON, BRANNIGANS, Free, reopened briefly and renamed **LATINOS** but now closed again. (U159, U177)

CROYDON, QUICKSNACK, East Croydon Station, Free, draught beer removed from the snack bars on all three platforms. Delete from pub database. (3SE241, U54, U109)

THORNTON HEATH, VICTORY, Enterprise, ex-Watney, closed and for sale, future uncertain. (3SE285, U56)

THORNTON HEATH, MCKENZIE BROS, Free, ex-Taylor Walker, now demolished. Formerly **PRINCE OF WALES**. (3SE283, U160, U177)

SOUTH WEST

SW2, HOP POLES, Enterprise, closed. (SW53)

SW4, FALCON, ex-Bass, H removed. (SW60, U142)

SW5, DOME, Free, converted to 'Zizzi' pizza restaurant. (SW62)

SW6, WHITE HART. Renamed **SW6 BAR & RESTAURANT**, ex-Bass, but now closed with signage removed. (SW71)

SW8, DUCHESS OF YORK, Free, H removed. (SW76, U141)

SW9, LOUGHBOROUGH HOTEL, Free, closed and for sale. (SW82)

SW9, QUEEN, ex-Bass, closed and being demolished. (SW83, U141, U172)

SW13, BAR ESTILO, Free, converted to 'Mamma' restaurant. (U178)

SW15, PUTNEYBRIDGE, Free, converted to 'Thai

Square' restaurant; correct address is 2-4 Richmond Rd. (U126)

MITCHAM (CR4), SKINNERS ARMS, Greene King, now demolished, believed for housing. (SW146, U137, U181)

SURBITON (KT5), RISING SUN, now converted to flats. (SW162, U140, U145, U172, KT43, U179)

WEST

W2, ROYAL OAK. No real ale. Acquired by Capital Pub Co from Spirit in January. (W78)

TWICKENHAM (TW1), HOBGOBLIN. Renamed **FILTHY'S**, now S&N Pub Enterprises, ex-Wychwood, H unused. (W203)

OTHER CHANGES TO PUBS & BEER RANGES

CENTRAL

EC1, COLONEL JASPERS. Renamed **BAVARIAN BEERHOUSE**, H removed. Sold by Davys and now a Free House/Bavarian basement bar and restaurant. Has 8 German keg beers from Diebels, Erdinger, Hofbrauhaus, Koppers, Paulaner and Warsteiner breweries plus occasional specials. £6.90/litre, £3.60/0.5 litre, £2.20/0.3 litre. Bare floors, long tables and benches. German food including lunchtime specials. Waitress service only. Open 11-11 Mon-Thurs, 11-1am Fri, 1pm-1am Sat, 11-10.30 Sun. (E14)

EC1, SHAKESPEARE. Now Spirit, ex-Taylor Walker via Punch. (E23, U75, U113)

EC4, WHITE SWAN, 108 Fetter La. -beers listed except Fuller: London Pride and Young; Bitter; +Adnams: Bitter; +real perry. Was **MUCKY DUCK** for a while. (E56, U87, U179)

W1(Mar), BEEHIVE, 126 Crawford St, acquired by Capital Pub Co from Spirit. (W50)

W1(May), FULLER'S ALE HOUSE. Renamed **IRON DUKE**, +Fuller; Discovery. Remains a Fuller's pub with some interior refurbishment, now with pictures and portraiture relating to the Duke of Wellington. (W59, U186)

W1(May), HOG IN THE POUND. Acquired by Capital Pub Co from Spirit in January. (W60)

W1(May), HOG'S HEAD. Renamed **BONDS**, beer range unchanged. (W60)

W1(S), BAR MONACO. Address should read 18/20 Ganton St. Formerly **BRASSERIE NORMAN**. Correction to W London Guide. (W63)

WC1, OVERDRAUGHTS, 51 Eagle St. Renamed **BOUNTIFUL COW**, -beers listed; +Adnams: Bitter, Broadside. Free House acquired by Roxy and Nathan Beaujolais who also run the Seven Stars in Carey St WC2. The pub is devoted to beef. Note revised address. (N26, HB11, W22)

WC2, EDGAR WALLACE, -beers listed except Adnams: Bitter; +House beers: Edgars Pale Ale (EPA) 3.5%, in fact Nethergate IPA; +Guest beers from micros supplied direct from SIBA brewers under the arrangement with Enterprise; +regional brewers' beers supplied by Enterprise itself. Beer festivals held three times a year. (W32)

WC2, MARQUIS OF GRANBY, 142 Shaftesbury Ave. Acquired by Capital Pub Co from Spirit in January. (W35)

CAPITAL PUBCHECK - UPDATE 188

EAST

E1, CAUTHENS. Renamed **BAR LOCKS**. Real ale not always available. (E63)

E1, CITY DARTS. Reverted to **PRINCESS ALICE**, -beers listed; +Courage: Best Bitter; +Fuller: London Pride; +Shepherd Neame: Spitfire. Now Free, ex-Thornley Taverns. (E63, U125)

E1, COMMERCIAL TAVERN, 142 Commercial St, -beers listed; +Fuller: London Pride; +two guest beers (e.g. Black Sheep, Brains); +real cider. Note correct address. (E63)

E1, GOLDEN HEART, -beers listed; + Adnams: Bitter, Broadside. (E66, U83)

E1, GUN, -beers listed; +Adnams: Bitter; +Courage: Best Bitter; +Wells: Bombardier; +Young: Bitter. (E67)

E1, PEWTER PLATTER. Renamed **POET**, -beers listed; +Draught Bass; + Greene King: Old Speckled Hen. Beers may vary. Formerly **PEWTER PLATTER TAVERN**. (U79, U156)

E1, KINGS STORES, -Fuller: London Pride; +Greene King: IPA, Abbot Ale, seasonal beers. (E69, U161, U184)

E1, TEN BELLS, -beers listed; +Wells Bombardier; +Guest beer. (E74)

E1, WILLIAMS (WINE & ALE HOUSE), -beers listed except Greene King: Abbot Ale; +Greene King: IPA, seasonal beers on handpump and by gravity. Now Greene

King, ex-Laurel, originally Whitbread. (E76, U98)

E3, CROWN. Renamed **MAR I TERRA**, -beers listed except St Peter's: Best Bitter. Former Singhboulton organic pub, now sold off as a Spanish tapas bar and restaurant. Small bar retained but mainly ancillary to restaurant. Real ale not always available. (E89, U79, U155)

E8, PEMBURY TAVERN, +real cider. No smoking throughout. (E114, U156, U187)

NORTH

N2, MADDENS ALE HOUSE, -beers listed except Fuller: London Pride; +Greene King: Abbot Ale; +W&D: Marston Pedigree; + two guests. Formerly **WELSH'S ALE HOUSE**. (N67, U120)

N4, FLAG. Renamed **BIG FAT SOFA**, Punch, ex-Pubmaster, still no real ale. Formerly **RACECOURSE** and previously **TAP & SPILE**. (N77, U130, U157)

N4, WORLDS END, -beers listed; +Guest beers (e.g. Archers). Now badged as part of Barracuda's 'Smith & Jones' chain. (N77, U137)

N7, HOBGOBLIN. Renamed **STUDY (THE)**, -beers listed; +Greene King: IPA; +Young: Bitter. Now Faucet Inns, ex-Wychwood. (N89, U120)

N8, QUEENS. Now a 'Pub & Dining Room', -beers listed; +Fuller: London Pride; +Wells: Bombardier; +Guest beer (e.g. Greene King IPA). (N95)

N9, BEEHIVE, -beers listed except Adnams: Bitter and



◆ Ever changing guest beers - recently Adnams Broadside, Robinsons Robin plus a selection of Winter Warmers and seasonal 'Mulled Wines'

◆ Maggie's Home Cooking

◆ Contained Pub Garden

◆ Quiz Night Thursdays

**DON'T FORGET OUR FAMOUS
EASTER BEER FESTIVAL**

14th-16th April

20+ real ales from microbreweries

A genuine traditional family pub situated in a quiet side road, yet just 100 yards from the Grand Union Canal and Hanwell flight of locks.

Idyllic cycle and rambling routes.

Timothy Taylor's Landlord always alongside Deuchars IPA and London Pride.

10 minutes from Hanwell BR station.
Tube - Boston Manor.

**Voted CAMRA West Middlesex
Pub of the Year**



Green Lane, Old Hanwell, London W7 Tel: 020 8567 3912
Open 11am - 11pm Monday - Saturday, 12am - 10.30pm Sunday

W&D: Marston Pedigree; +Greene King: IPA; +Tetley: Bitter. Now Spirit, ex-Taylor Walker. (N99)

N9, STAG & HOUNDS, -beers listed; +Fuller: London Pride; +Greene King: Old Speckled Hen; +Wells: Bombardier. Now part of M&B's Ember Inns estate. (N101, U151, U165)

N14, OSIDGE ARMS. Now badged as Q's by Spirit. (N119, U185)

N16, JOLLY BUTCHERS. Renamed **FATHER TED'S**, still no real ale. (N128)

N16, KRYSTAL'S. Renamed **TONIC**, still no real ale. Originally **HARE & HOUNDS**. (N128, U165)

N16, PRINCE, -beers listed; +Courage: Directors Bitter; +Fuller: London Pride; +Greene King: Abbot. Formerly **PRINCE OF WALES**. (N130, U166)

N17, ELBOW ROOM, -beers listed; +Guest beer from Archers. (N134, U138, U166)

N19, BAILEYS CORNER. Renamed **FLORIN**, still no real ale. Formerly **MULBERRY TREE**. (N144, U164)

N20, ORANGE TREE. Now an M&B Ember Inns pub. (N147, U187)

N21, DOG & DUCK, -beers listed; +Greene King: IPA; +Hopback: Summer Lightning; +Taylor: Landlord; +Wadworth: 6X. (N151)

N21, GRYPHON. Renamed **HARVESTER**, retains Draught Bass. (N151, U174)

N21, KINGS HEAD, -beers listed; +Caledonian: Deuchars IPA; +Fuller: London Pride. Owned by Geronimo Inns. (N152, U176)

N22, NELSON (RATTLE & HUM). Now **LORD**

NELSON, retains Greene King: Abbot Ale. (N156 U151)

BARNET (EN5), MOON UNDER WATER.

Refurbished and renamed **MISTY MOON**, -beers listed except Greene King: IPA and Abbot Ale; +Courage: Best Bitter; +Guest beer from Greene King list. Now run by Heart Vale pub company (parent company believed to be Valeart Design), ex-Wetherspoon. (N252, H19, U170, U179)

BARNET (EN5), WEAVER. Now **WEAVERS BAR**, -beers listed; +Greene King: IPA. (N253, H21)

NORTH WEST

NW1, SOMERS TOWN COFFEE HOUSE, +Courage: Directors Bitter. Now French owned with a French food menu. (N174)

NW2, OLD BIDDY MULLIGANS. Renamed **TAVERN**, H now removed. Formerly **CRICKLEWOOD TAVERN**. (N179, U117, U120)

NW3, RAT & PARROT. Reverted to **GEORGE**, -beers listed; +Courage: Best Bitter; +Greene King: IPA; +W&D: Marston Pedigree; +Young: Bitter. (N185, U143)

NW5, JOLENE CELESTE. Renamed **OXFORD**, -beers listed except Fuller: London Pride; +Greene King: Old Speckled Hen. Now owned by Real Pub Co. Formerly **VULTURES PERCH**, originally **OXFORD TAVERN**. (N201, U155, U158)

NW6, DUKE O'ROURKES should read **DUKE (O'ROURKES)**, the latter being a subtitle. Formerly **McGARVEYS**. (N205, U149)

NW6, SHENANIGANS. Reverted to **SHAMROCK**. (N207, U149)

The Tea Clipper

19 Montpelier Street, Knightsbridge

London SW7 1HF

Tel: 020 7589 5251

Email: enquiries@teaclipperknightsbridge.com



The Tea Clipper is Knightsbridge's best free house, a stone's throw from Harrods and set in Knightsbridge's peaceful backstreets. Just refurbished with an exciting new menu.

- Selection of great real ales on offer, including: Young's; Hogs Back TEA and London Pride
- Delicious home cooked food from our all new menu
- Outdoor seating overlooking the lovely surrounding area
- Catch all the major sporting action shown here

CAPITAL PUBCHECK - UPDATE 188

SOUTH EAST

SE1, OLD KINGS HEAD. Now S&N Pub Enterprises, ex-Courage. (SE28)

SE10, GLOUCESTER. Renamed **GRENWICH PARK**, a 'bar and grill'. Now Free, ex-Bass, still no real ale. (SE95)

SE11, FINCA. Reverted to **WHITE HART**, refurbished with original features removed. (SE111, U102)

SE13, ROSE OF LEE. Renamed **DIRTY SOUTH**, still no real ale. A 'Late Bar' with live music. Formerly **HOBGOBLIN** for a while. (SE122, U102, U107, U161)

SE13, JOLLY FARMERS. Rotating beers include those from Adnams, Fuller's, Jennings and Ringwood, +Guest beer and House beer (to come). Food Mon-Fri 7.30-10.30 breakfast, 12-3.30 lunch (Sun 12-2.45). (SE120, U165, U186)

SE17, KINGS HEAD. Renamed **MONAGHANS**. (SE159)

SE19, O'NEILL'S.

Reverted to **WHITE HART**, -Draught Bass; +Guest beers (e.g. Exmoor and Greene King). Refurbished back to a more traditional décor, with wood flooring, exposed brickwork and original fireplaces etc but some novel features. Heated outdoor garden area. Open kitchen and adventurous food menu.

(SE181, U102, U115)

CHISLEHURST, RAMBLERS REST. Now S&N Pub Enterprises, ex-Courage. (3SE227, 8K63)

CROYDON, VILLAGE INN. Renamed **HARVESTER (CRICKETERS)**. (3SE238, U49, U120)



SOUTH WEST

SW1(B), JOINERS ARMS. Renamed **THOMAS CUBITT**, -beers listed except Greene King: Old Speckled Hen; +W&D: Marston Pedigree. Now S&N Pub Enterprises, ex-Spirit. Formerly **VINO VERITAS**. (SW40, U167)

SW1(B), PLUMBERS ARMS. Now Spirit, ex-S&N. (SW39)

SW1(SJ), THREE CROWNS. Now Spirit, ex-S&N. (SW46)

SW1(W), BAG O'NAILS. -beers listed; +varied beer range. Now Spirit, ex-S&N and 'T&J Bernard' badged. (SW47)

SW1(W), DUKE OF YORK. Now Spirit, ex-S&N. (SW48)

SW1(W), KINGS ARMS. Now Spirit, ex-S&N. (SW48)

SW1(W), SHAKESPEARE. Now Spirit, ex-S&N. (SW49)

Come on down to the TULSE HILL TAVERN

150 Norwood Road
London SE24 9AY

Tel: 020 8674 9754

We pride ourselves on the quality of our Real Ales - Greene King IPA available at all times.

At the time of going to press we have Sharps Cornish Coaster and Shepherd Neame Spitfire.

- ◆ Bar snacks par excellence
- ◆ Good range of bottled beers
- ◆ Beer garden front and back
- ◆ Disabled toilet facilities
- ◆ "Board Games" Night every Wednesday
- ◆ Function Room available Friday nights
- ◆ Darts - random mixed doubles each month
- ◆ Karaoke on Saturdays

TWO DOVES

37 Oakley Road, Bromley Tel 020 8462 1627



A warm welcome awaits you in the relaxed surroundings of this friendly pub

**Young's selection of Real Ales
Young's Award Winning Garden**

**CAMRA Good Beer Guide listed
Friendly Clientele • Light Snacks**

Bus 320 from Bromley North and Bromley South railway stations stops outside

Hours: Mon-Thu 12-3, 5.30-11; Fri 12-3, 5-11.30;
Sat all day 12-11; Sun 12noon-11

SW1(W), STAGE DOOR. Now Spirit, ex-S&N. (SW50)
SW3, CAHOOTS. Renamed **CAFÉ BODEGA.** (SW56)
SW3, CHELSEA POTTER. Now Spirit, ex-S&N. (SW56)

SW3, WELLESLEY ARMS. Acquired by Capital Pub Co from Spirit in January, ex-S&N. (SW58)

SW6, DURELL ARMS. Acquired by Capital Pub Co from Spirit in January, ex-S&N. Still no real ale. Formerly **RAT & PARROT.** (SW70, U163, U175)

SW6, GREENE ROOM. Renamed **BUTCHERS HOOK.** Retains Greene King beers. Formerly **CROSS EYED NEWT (CHELSEA).** (SW66, U157, U167)

SW6, LARRIK. -beers listed; +Greene King IPA; +W&D: Marston Pedigree. Free House acquired by Capital Pub Co by June 2005. Formerly **KINGS ARMS.** (SW68, U132, U161, U162)

SW6, MARTINI BAR. Renamed **NORTH END** and renamed again **MEUM COR,** a bar and restaurant, still no real ale. (SW67, U157, U162)

SW9, HARLEM. Renamed **PRINCE (THE).** Formerly **PRINCE OF WALES.** (SW82, U184)

SW11, FALCON. -beers listed except Fuller: London Pride; +Greene King IPA, Old Speckled Hen; +Wells: Bombardier. (SW88, U144, U159)

SW11, PRINCE ALBERT. Now Spirit, ex-S&N. (SW89, U125, U177)

SW12, BALHAM ARMS. Renamed **CLARENCE** after a

second major refurbishment within 18 months, -beers listed; +Adnams: Explorer, Broadside (though beer range may vary). Keg beers include Meantime (Kolsch and Raspberry), Erdinger and Maredsous. Now leased by Capital Pub Co to independent operator Scott Collins, who also runs the Bishop in SE22 East Dulwich and the Castle in SE5 Camberwell. Formerly **PUZZLE.** (SW93, U180, BM6)

SW15, LITTEN TREE. Renamed **WALKABOUT.** Formerly **SLUG & LETTUCE.** (SW104, U167, U176)

SW15, SPENCER ARMS, +Adnams: Explorer, Broadside. Formerly **PUTNEY PAGE** for a while. (SW104, U169, U185)

SW16, RAILWAY HOTEL. Now **RAILWAY (THE).** (SW108, U153, U182)

KINGSTON (TW9), KINGS TUN. Now branded by Wetherspoon as a 'Lloyds No 1'. (U126)

RICHMOND, DUKE OF YORK. Now acquired by Capital Pub Co from Spirit, ex-Punch. Formerly **ARKWRIGHTS WHEEL** for a while. (SW154, U137, U153)

WEST

W2, TOUCH. Renamed **SESTO BAR.** (W80, U186)

W4, BARLEY MOW, 9 Heathfield Terr, 270 Chiswick High Rd. Acquired by Capital Pub Co from Spirit in January. Note full address. (W86)

W5 GREYSTOKE, -beers listed except Courage: Best Bitter; +Fuller: London Pride; +Wells: Bombardier; +Young: Bitter. Badged as part of the 'John Barras' estate. (W96)

W5, TJ DUFFYS. Free House acquired by Capital Pub Co in October 2005. (W99)

W6, HOP POLES. Acquired by DCG Acquisitions from Spirit, -Fuller: London Pride; +Courage: Best Bitter. (W103)

TWICKENHAM (TW1), MOON UNDER WATER. Renamed **MISTY MOON,** -beers listed except Fuller: London Pride; +Greene King IPA, Old Speckled Hen; +Young: Bitter; +Guest beer. Acquired from Wetherspoon by Heart Vale pub company (parent company believed to be Valeart Design). (W203)

CORRECTIONS TO UPDATE 187

NEW PUBS ETC

E8, PEMBURY ARMS. Should read **PEMBURY TAVERN.**

SW7, HARRINGTON'S. Is a Free House.

PUBS CLOSED ETC

E2, O2 BRASSERIE (BAR). Should read **E1.**

E8, PRINCE ARTHUR. Formerly **LADY DIANA.**

E10, FOUR FINCHES. Should read **FOUR FINCH'S.**

OTHER CHANGES ETC

N20, BLACK BULL. Add: -beers listed.

NW10, THREE BARRELLS. Should read **THREE BARRELS.**

SW1(SJ), Name omitted: **CLARENCE.**

SW17, A BAR 2 FAR. Now Enterprise, ex-Inntrepreneur. **TWICKENHAM.** Add 'WEST' as heading.

Real Ale Walks

Imagine a walk in the fantastic unspoilt Somerset countryside to a traditional pub for a pint of Cotleigh, Exmoor or any one of a dozen or so local brews.

Sound like your idea of paradise?

Real Ale Walks run all inclusive packages from just £75 per day.

- ◆ 4 diamond en-suite accommodation
- ◆ All meals including pub lunch
- ◆ Free tastings
- ◆ Evening entertainment
- ◆ Fully guided walking

Contact Lynne or Ian on
 01278 732228

or email: drinker@realalewalks.co.uk
www.realalewalks.co.uk

TRAFALGAR FREEHOUSE

A traditional 'local'

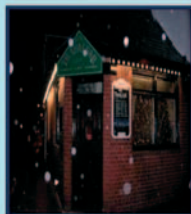
23 High Path, Merton, SW19 2JY

Tel: (020) 8542 5342 e-mail: trafalgar@thetraf.com

www.thetraf.com



5 minutes from South Wimbledon Tube
see www.thetraf.com for a map...



The 'Traf' Dark-fest

Mild - Porter - Stout

Throughout May we will have a
fantastic selection of Milds,
Porters and Stouts.

Try the dark and see the light!!!



Food at the 'Traf'

Tuesday 11th April

7.30pm to 9pm

**Polish food night!
Bigos**

A stew of meat, smoked
sausage and sauerkraut
served with a hunk of
bread

Tuesday 9th May

7.30pm to 9pm

**'Mild' Chilli Night
Beef and borlotti beans**
cooked in dark mild, as
spicy as you like, with rice

£5.99

Includes a pint of beer, a
175ml glass of wine or a
soft drink

Veggie option available



St George's Day

Sunday 23rd April

Roast Beef and Yorkshire pud

With all the trimmings!!!

Served from Midday to 3pm

£5.99



Thames Bridges Bike Ride

On Sunday 14th May a team of 8 from the 'Traf' will take part in
the Thames Bridges Bike Ride - 14 bridges and 32 miles -
in aid of the Stroke Association (www.stroke.org.uk). Our aim is
to raise more than £1000. If you would like to sponsor us, please
contact David at trafalgar@thetraf.com or at the above address
or phone number - Tal

Always a choice of cask conditioned ales

Regular beers: Timothy Taylor Golden Best and Gales HSB plus up to four guests...

The WINDSOR CASTLE



378 Carshalton Road Carshalton Surrey SM5 3PT

Tel: 020 8669 1191 Website www.windsorcastlepub.com

Why not join us at our

ANNUAL BEER FESTIVAL

on Friday 28th April through to Monday 1st May

35 Cask Ales from nationwide micro breweries

Courtyard and garden open with Barbecue, hot salt beef sandwiches
Home-made pizzas

Friday 28th April - Preview Night 7pm - 11.30pm 'Josh and The Daredevils'

Saturday 29th April - BBQ from 12-6pm. Live music 9pm - 11.30pm 'Bad To The Bone'

Sunday 30th April - BBQ and Carvery 12 - 4.30pm 'Driver'

Monday 1st May - BBQ 12-4pm. 'Jam' Night 9 - 11pm

All musicians welcome. Charity raffle draw

Added bonus - Art Exhibition by local artist Vic Eve

A weekend to savour and enjoy!

CASK MARQUE AWARDS

Formed in 1997, Cask Marque is an independent accreditation scheme jointly funded by participating brewers and retailers, which recognises excellence in the service of cask ale. The award is made not to the pub but to the licensee, who has to pass two unannounced inspections with assessors sampling up to six beers checking temperature, appearance, aroma and taste. Further inspections are made twice a year, with additional random inspections triggered by customer comment.

ADDITIONS

New Cask Marque awards to licensees of pubs in Greater London and deletions notified since January are listed here.

CENTRAL

EC1, SHAKESPEARE, 2 Goswell Rd. Spirit. (E23, U75, U113, U188)

WC2, SHIP TAVERN, 12 Gate St. S&N. (W41)

NORTH

N1, NARROW BOAT, 119 St Peters St. Free. (N53, U174, IS18)

SOUTH EAST

SE1, OLD KINGS HEAD, 45 Borough High St. S&N. (SE28, U188)

CHISLEHURST, RAMBLERS REST, Mill Place. S&N. (3SE227, 8K63, U188)

SOUTH WEST

SW1(B), PLUMBERS ARMS, 14 Lower Belgrave St. Spirit. (SW39, U188)

SW1(SJ), THREE CROWNS, 19 Babmaes St. Spirit. (SW46, U188)

SW1(W), DUKE OF YORK, 130-134 Victoria St. Spirit. (SW48, U188)

SW1(W), KINGS ARMS, 77 Buckingham Palace Rd. Spirit. (SW48, U188)

SW1(W), SHAKESPEARE, 93 Buckingham Palace Rd. Spirit. (SW49, U188)

SW1(W), STAGE DOOR, 3 Allington St. Spirit. (SW50, U188)

SW3, CHELSEA POTTER, 119 Kings Rd. Spirit. (SW56, U188)

SW11, PRINCE ALBERT, 85 Albert Bridge Rd. Spirit. (SW89, U125, U177, U188).

DELETIONS

W1(F), DUKE OF YORK, 47 Rathbone St. Greene King
E4, PLOUGH, Sewardstone Rd. McMullen

Over 3,745 licensees have the Cask Marque award. The beer in their outlets has been independently inspected for beer quality.

Visit the Cask Marque Website
www.cask-marque.co.uk and download a regional guide. Why not visit a brewery?

www.visitabrewery.co.uk

Cask Marque - for the licensee who serves the 'perfect pint' of cask beer.



**The Cask Marque Trust,
Seedbed Centre, Severalls
Park, Colchester, Essex
CO4 9HT
Tel: 01206 752212**

ST GEORGE'S ALE CHEERS THE ENGLISH

St George's Ale, the archetypal patriotic English beer from Young's, has an extended season on draught this year to help celebrate the Six Nations rugby union tournament, St George's Day on 23 April and the football World Cup in the summer.

Also available in bottles throughout the year, St George's Ale is brewed at 4.3% ABV from the finest English malted barley and hops, and is available in Young's own pubs across the South of England and in selected free houses and pubs belonging to other companies. The only brew licensed to bear the name in Britain, it supports a campaign by John Young who has been calling for many years for England's patron saint to be given at least equal status to the patron saints of Ireland, Scotland and Wales.

In July Young's pubs will again be serving Golden Zest, followed in September by Ram Rod, before Winter Warmer comes back with the dark evenings at the end of October.



LAGRAD LONDON GROUP

LAGRAD (Lesbian and Gay Real Ale Drinkers) is a group of CAMRA members extending the Campaign to the lesbian and gay scene. The London group now meets regularly on the third Wednesday of every month from 7pm onwards in the basement of ? to Heaven. The Surrey & Sussex group meets on the second Sunday of every month from 9pm onwards in either the back bar of the Bedford Tavern, Western St, Brighton (odd numbered months) or the PV, Upper North St, Brighton (even numbered months), and the Scottish Group in the Regent, 2 Montrose Terrace, Edinburgh on the first Monday of every month from 8.30 onwards. All welcome to all events. Contact the group convenor on LAGRAD@ukgateway.net, or visit www.lagrad.org.uk

April - Mon 10 (7pm). Half Way, 7 Duncannon St, WC2, (020-7930 8312), second Monday programme planning meeting in the basement. - **Thu 27 (7pm)** Kings Arms, Poland St, Soho.

May - Mon 8 (7pm) New members' social. Upstairs at Compton's, Old Compton St. London Pride at £1.50 a pint: happy hour all evening! - **Tue 23 (7pm)** Harvey's Royal Oak, Tabard Street, nr Borough tube for something to eat, then 10 minutes walk to the Fort, 131 Grange Rd, SE1 (020-7237 7742). Don't arrive early as it opens at 8pm. Usually has a Young's beer.

North London Pub of the Year 2005

The Oakdale Arms EASTER BEER FEST

12-18th April

35+ Real Ales
Ciders & Perries



283 Hermitage Road
London, N4 1NP
020 8800 2013

www.individualpubs.co.uk/oakdale

The Willoughby Arms
Presents,
In support of CamRa's



"Mild Month of May"

Mild & Morris Dancers

With the....



Four Milds, Twenty Morris Men & Barbecue!!

Thursday 4th May from 8pm

The Willoughby Arms

47 Willoughby Road
Kingston upon Thames Surrey KT2 6LN

For further details call 020 8546 4236 or
Visit www.thewilloughbyarms.com



THE ROYAL OAK



44 TABARD STREET, LONDON SE1

Tel - 020 7357 7173

Traditional Harvey's Sussex Ales
Served in a Traditional Atmosphere

Open Mon-Fri 11am - 11pm

Food Available
Lunchtime & Evenings

And now open Saturdays 6pm - 11pm
also Sundays 12 midday - 6pm
with traditional Sunday lunches

Nearest tube - The Borough

The Nelson Brewery require a FREELANCE SALESPERSON

to cover London and the South East.

Commission negotiable.

Immediate start.

In the first instance apply to:

Lorraine or Michael

The Nelson Brewing Co
The Old Posthouse, Church Lane
The Historic Dockyard
Chatham ME4 4TE

Phone: 01634 832828

Fax: 01634 832278

email:

lorraine@nelsonbrewingcompany.co.uk

WHAT'LL IT BE THEN?

A PINT OF THE USUAL, OR A
LIFE-CHANGING EXPERIENCE?

Allow us to introduce you to an old friend. Fuller's ESB, three times Champion Beer of Britain, seen here in its smart new livery. Don't worry, the beer's just the same as ever. But if it's been a while, maybe it's time you reacquainted yourself with its uniquely rich, deliciously fruity flavour and long, satisfying finish. It could well be the happiest reunion of your life.



ESB. THE CHAMPION ALE.

THE RED LION, EALING

Eight people from Fuller's, led by John Roberts, the beer and brands director, were at the Red Lion, St Mary's Road, Ealing on 19 January for the presentation by the West Middlesex Branch of a certificate for 15 consecutive entries in the *Good Beer Guide*.

The Red Lion is a splendid example of a traditional London pub. The earliest record of it is believed to be in the local newspapers in the early 1700s. It has been a Fuller's pub ever since Fuller, Smith & Turner of Chiswick was formed in 1845 and is known to its regulars as *Stage Six*, the hallowed watering hole of characters, workers and actors from the famous Ealing film studios which are almost opposite. Inside, the walls are hung with photographs depicting glorious moments in British filmmaking.

Jonathan and Victoria Lee took a ten-year lease from Fuller's in June 2001, having beaten off competition from about 60 applicants. There soon followed a major refurbishment that has won much praise as a very rare example of an extension actually improving a pub. The front of the pub was virtually unchanged and the new, rear part was decorated and furnished in a style compatible with the rest of it. The character and ambience of the pub was preserved.

Chiswick, Discovery, London Pride and ESB are always on tap, and usually there is the current seasonal beer as well. In the absence of seasonal beer there is always a guest ale. Whenever I ask branch members to send me their comments on beer quality in pubs in the branch area, I receive more accolades for the Red Lion than anywhere else. It was branch pub of the year in 2002, 2003 and 2004. In 2004 Jonathan and Victoria won the highly coveted Griffin award for having the best of the then 240 Fuller's pubs. Their prize was a holiday of their choice to a value of £3000.

Upmarket food is a major aspect of the business, although great care has been taken to maintain the integrity of the pub. Lunch is served from 12 to 2.30 Monday to Saturday, 12 to 4 on Sunday, and dinner from 7 to 9.30 Monday to Saturday. The head chef is Jonathan and Victoria's son, Keiran, who previously worked at the highly regarded Old Parsonage in Oxford.

The pub is almost equidistant between Ealing Broadway and South Ealing stations. The 65 bus passes the door.

Brian Lawrence
Chairman, West Middlesex Branch

TJ Duffy's

282 Northfields Avenue, Ealing
London W5 4UB

Tel: 020 8932 1711

Email: enquiries@tjduffy.com



TJ Duffy's, a great genuine free house, just 1 minute's walk from Northfields underground station

- *Not to be missed - our Wednesday Curry nights or Thursday Steak nights*
- *A great selection of real ales including favourites such as Bombardier, Hogs Back TEA and London Pride*
- *Monday night is Quiz night - come and put your general knowledge to the test in our friendly and laid back atmosphere*
- *Live music every Sunday evening*
- *No smoking area - perfect for enjoying our delicious home cooked food*

MAY



coming soon... it will be worth the wait!

look out for updates: www.jdwetherspoon.co.uk

THE LOAD OF HAY

Some three years late, on 30 January, the West Middlesex Branch finally presented an award to the Load of Hay for ten consecutive years in the *Good Beer Guide*. We considered giving a certificate for 13 years, but not unnaturally the pub's owners thought that would look very odd and said they would prefer a ten-year one. As I pointed out when I made the presentation, it means they will only have to wait 12 years between receiving a ten- and a 25-year certificate!

The Load of Hay is the only genuine free house in Uxbridge. Near Brunel University in Villier Street, a few yards off Cleveland Road, it is well worth seeking out, having deservedly won several local CAMRA pub of the year awards. It was built on the site of the officers' mess and stables of the Elthorne Light Militia, and has been a public house since the 1870s. The main public part of the pub was originally stables, from which its name derives. The bottom section of it is a no-smoking area. There is also a cosy front lounge that is normally open to the public, but it can be used for private functions.

Fuller's London Pride is the regular, and best selling, real ale. Normally, there are three guest beers from an ever-changing list; they are usually from small breweries, but always from the independents. The pub changed ownership in September 2003, but the commitment to selling real ale in top condition is undiminished.

The Load of Hay is open from 11am until 11.30pm Monday to Saturday and from noon to 11.30pm on Sundays. Food is served from noon to 2.45 and from 7 to 9.45 Mondays to Saturdays, and from noon to 3.45 and from 7 to 9.30 on Sundays. Booking is strongly advised for the very popular Sunday lunches. Darts is very popular; the pub boasts two darts teams.

The U1 and U3 buses go down Cleveland Road, passing within a few yards of the pub. There is a stop just beyond Villier Street for buses travelling towards Uxbridge, but coming from Uxbridge the nearest stop is in The Greenway. The 207 and 607 buses stop in Hillingdon Road at the junction of the Greenway, from which the pub is about a five-minute walk.

Brian Lawrence

Advertise in the next
LONDON DRINKER

Our advertising rates are as follows:

Whole page £260 (colour) £220 (mono),

Half page £150 (colour) £110 (mono)

Quarter page £80 (colour) £55 (mono)

Phone Peter Tonge now on 020 8300 7693

A constantly changing selection of real ales from microbreweries - over 3,000 different ales to date.

Adnams Bitter and Broadside, Hop Back & Harvey's Best always available

- **A selection of 20 malt whiskies**
- **20 different wines by the glass**
- **Totally new range of German bottled beers**
- **NEW MENU!**
Food available from 12noon to 9.30pm Mon - Sat.
'Sunday Lunch' from 12noon to 5pm

**CAMRA
SW London Pub
of the Year 1992,
1994, 1996,
1998, 2000 and
2002**



Priory Arms
a genuine free house

83 Lansdowne Way, Stockwell, SW8
(5 minutes Stockwell Tube) Tel 020 7622 1884

NELSON WINES

THE FOREIGN BEER CENTRE
BEER OF YOUR CHOICE INSTORE

500 BEERS IN STOCK

including:

130 Belgian, 220 British and
30 German, also 30 ciders

**10% DISCOUNT ON 12 BOTTLES
OR OVER**

**FAST SELECTION OF RUMS,
MALT WHISKIES, TEQUILAS,
VODKAS etc.**

Opening hours:

Mon - Fri 6pm - 11pm;

Sat 1pm - 3pm & 5pm - 11pm

Sun 1pm - 3pm & 5.30pm - 10.30pm

Payment by credit/debit card accepted

168 MERTON HIGH ST, LONDON SW19 1AZ

FREE GLASS HIRE • CASE DISCOUNTS • SALE OR RETURN

020 8542 1558

LOWER RED LION



**36 Fishpool Street,
St Albans AL3 4RX**

Tel: 01727 855669

Nine Real Ales

Draught Czech and Belgian beers

Belgian bottles and Malt Whiskies

MAY BANK HOLIDAY BEER FESTIVALS

**Friday 28th April to
Monday 1st May
60+ Beers, Cider
& Barbecue**

**Friday 26th May to
Monday 29th May
Favourites &
Barbecue**

ALEHOUSE FESTIVAL 31st March - 3rd April

IDLE MOMENTS

As promised, here are the solutions to the puzzles set in February's Idle Moments column.

NUMBER PUZZLES:

- 86 Million Miles to the Sun
- 13 Amps is the Current Rating of a Three Pin Plug (Domestic)
- 1840 Issue of the First Postage Stamp (Penny Black)
- 22 Balls on a Snooker Table
- 4 Cardinal Points on a Compass
- 70 Three Score and Ten
- 18 Millimetres is the Diameter of a Five Pence Coin
- 85 Dominoes in a Double Nine Set
- 10 Points are Awarded to the Winner of a Formula One Grand Prix Race
- 72 Pints in a Firkin

BREWERY ANAGRAMS:

- CLAN LORD - CRONDALL
- WEARS TOWEL - LOWESWATER
- GRAN FOUGHT LORDS - STRANGFORD LOUGH
- NOT DOWN - DOWNTON
- REMOTE RAG - GREAT ORME
- WALLY NEEDS "E" - WENSLEYDALE
- DIM SAFELY - MAYFIELDS
- WE'RE HARD - HEReward
- BONK CURLY CAT - BLACK COUNTRY
- HAULS THE GROUSE - SLAUGHTERHOUSE

5BY4:

We didn't have a 5BY4 last time. Instead I asked you how to make £32:17/8/2d out of a dozen things; did you get all these?

- A stone - 14 pounds (£14)
- A bicycle - penny farthing (1¹/₄)
- A singer - tenor (£10)
- A man's name - Bob (1/-)
- Jupiter, Saturn, Neptune - "three far things" (3¹/₄)
- Leather worker - tanner (6d)
- 50% of a pair of panties - half a knicker (10/-)
- Royal headdress - crown (5/-)
- Unwell sea creature - sick squid (£6)
- Simian leg joint - ape knee (1¹/₂d)
- King Charles II - sovereign (£1)
- Exotic fowl - guinea (£1/1/-)

If you add that lot up (assuming you remember how many thingummies in a whatsit) I can assure you that you will reach the appointed sum.

GENERAL KNOWLEDGE:

- In the Bafta and Emmy award winning television play, "The Gathering Storm" about Churchill's life in the mid-thirties the Butler, David Inches was played by Ronnie Barker.
- The title taken when he became a peer by Tony Banks (when, apparently he was not allowed his first choice - Lord Banks of the Thames!) was Lord Stratford of Stratford.
- Churchwards and Colletts are railway locomotives of the Great Western Railway (named after the Chief Mechanical Engineer at the time they were built).
- The Nuffield Radio Astronomy Laboratories are more commonly known as Jodrell Bank.
- The event run every other August from Cowes to Plymouth - the long way round - is the Fastnet Race.
- Aston Martin cars derive the second part of their name from Lionel Martin who started the company but the "Aston" comes from Aston Clinton - a hill climb course on the edge of the Chilterns, near Aylesbury.
- The modern technology named after Harold, King of Denmark (from about 940 to 985) is Bluetooth.
- The surface of the Dead Sea is 1340 feet or 408 metres below sea level (according to my copy of Encarta).
- In 1955 the Englishman who won the round Italy Mille Miglia race at the record average speed of 97.95mph was Stirling Moss in a 3 litre Mercedes. The navigator was "Jenks" (Dennis Jenkinson).
- Eleanor Velasco Thornton was the secretary (and more, we believe) to the Second Lord Montagu of Beaulieu. She was also reputedly the model for the Spirit of Ecstasy - the bonnet mascot of Rolls Royce cars.

IDLE MOMENTS

Hello fans! How are things with you? Hopefully by the time you read this Spring will be well under way and the weather will be a bit warmer than it is as I write this. I found this quotation from Robert Frost in a diary and it struck a chord: *The brain is a wonderful organ. It starts working the moment you get up in the morning, and does not stop until you get into the office.*

Right, let's start off with the Number Puzzles; I trust you won't find them all too easy:

- | | |
|--------------------------|-----------------------|
| 1. 7 A of M (by WS) | 6. 5 S on the AF |
| 2. 35,840 O in a T | 7. 4 A in a D of C |
| 3. 3 B in a G of B | 8. 1728 CI in a CF |
| 4. 100 DC is the BP of W | 9. 8 is the S R of SF |
| 5. 18 G in a K | 10. 6 TM |

So now it's time for the Brewery Anagrams. Can you sort these out?

- FULSOME LIL
- YES, SAVE WILLY
- LOB WAND
- I DRAG YEW
- HUGE SABLES
- PETER'S TORCH
- BARD READ IRON HAND
- FIRST TOY - I CLING
- ERIC WASN'T SOLD
- LASS REMAINED

How often do you see beers from small breweries in your local free house and wonder whereabouts they come from? Well, I have taken that as the basis for this month's 5BY4 - all you have to do (or not if you so choose) is match the breweries with the counties where they are located.

- | | |
|--------------------|-----------------------|
| 1. Goacher's | A. Bedfordshire |
| 2. All Nations | B. Greater Manchester |
| 3. Moles | C. Essex |
| 4. Marble | D. Derbyshire |
| 5. Leatherbritches | E. Nottinghamshire |
| 6. Potton | F. Wiltshire |
| 7. Rooster's | G. Kent |
| 8. Mighty Oak | H. Lancashire |
| 9. Moorhouses | I. Shropshire |
| 10. Castle Rock | J. North Yorkshire |

And with the inevitability of night following day we end with a few General Knowledge questions:

- Kakadu National Park was established in 1979 - but in what British Commonwealth country is it situated?
- Stanley Michael Bailey ??? (aka Mike the Bike) won the first of his nine world championships in 1961 on a 250cc Honda - so what was his surname?
- In what state of the USA are the Organ Mountains to be found?
- What ceremony takes place in July every year between Sunbury and Abingdon on the River Thames and for what purpose?
- What is Monty's Pass?
- Jacqui McShee, Bert Jansch, John Renbourn, Danny Thompson and Terry Cox were the original line-up of which group?
- Zymology (also known as zymurgy) is the study of what?
- The largest archaeological monument in Britain runs some 150 miles between the rivers Wye and Dee. What is it called?
- What is the capital city of Morocco?
- Juan Fangio won the first of his five Formula 1 world championships in 1951, but at what age - and in what make of car?

That's about it for another couple of months - see you next time.

Andy Pirson

The Red Lion
1 Mill Lane,
Godalming,
Surrey
01483 415207



**The only family-owned and
run Freehouse in Godalming**
*(5 minutes from Godalming station on the
Waterloo/Portsmouth line)*



Still offering excellent fresh food
and delicious Sunday lunches

*Thank you for your support of
our Easter Festival - the
North East (28 ales)
Extravagana*

**REMEMBER - MAY IS
MILD MONTH**

**By the time you see this
advertisement we should
be serving traditional cider
on draught**

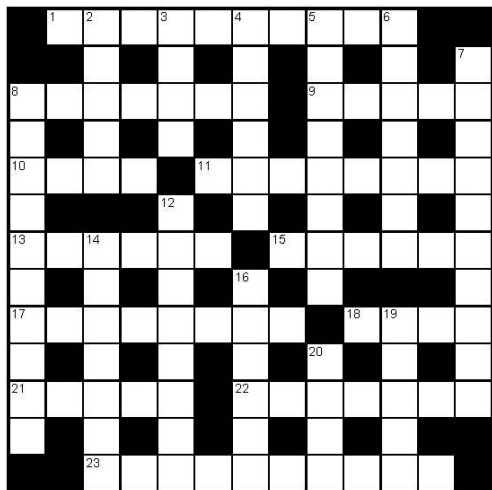
CAMRA Good Beer Guide
1994/5/6/7/8/9/2000/1/2/3/4/5/6

Email: bestpubbloke@aol.com

LONDON DRINKER CROSSWORD

Compiled by DAVE QUINTON

£20 PRIZE TO BE WON



Name

Address

.....

All correct entries received by first post on 31st May will be entered into a draw for the prize.

Prize winner will be announced in the August London Drinker.

The solution will be given in the April edition.

All entries to be submitted to:
London Drinker Crossword
25 Valens House
Upper Tulse Hill
London SW2 2RX

SOLUTION TO FEBRUARY'S CROSSWORD



ACROSS

1. Tea tires me out now. [6,4]
8. Bird to drink last of gin. [7]
9. Body cut at the end roughly. [5]
10. Pub's new store room. [4]
11. Low calls in the boatyard. [8]
13. Went back with horse for drink. [3,3]
15. Idiot drowned in sea all together. [6]
17. Illumination on landing. [8]
18. First punk song duo. [4]
21. Sails off with him. [5]
22. It may be taken for acceptance. [2,5]
23. Take steps to include crate in flights. [10]

DOWN

2. Flower festival mainly' [5]
3. Meet up for a drop. [4]
4. Chance to upset Mad Ron. [6]
5. Bury girl gets break..... [8]
6.and makes mistake about shopping. [7]
7. Thought about merging Tory Party with revolutionary. [10]
8. Book group for church meeting. [5,5]
12. Resort to throwing ashes out. [8]
14. Noisy crowds put away gallons in brewery. [7]
16. At home set up a kind of screen for this sport. [6]
19. A party is lively. [5]
20. Band of sailors coming and going. [4]

Winner of the prize for the December Crossword:
Paul Gray, Crawley, West Sussex.

Other correct entries were received from:
Tony Alpe, Mrs. Pat Andrews, Geoff B, John Barker, Steve Block, John Blundell, Jeremy Brinkworth, M.Broadhead, J.Bromley-Challenor, David Brown, Ben Burfutt, John Cattemull, Chris Fran & a spotted dog, John Cole, Richard Conway, Charles Creasey, Kevin Creighton, Paul Curson, Richard & Clever Clogs Douthwaite, Duke & Inky, Arthur Fox-Ache, Chloe Gilbey, J.E.Green, Alan Greer, Tarnya Haigh, John Heath, Kevin Henriques, Orel Hershiser, Graham Hill, William Hill, Sheerluck Holmes, P.J.Kerrigan, Les Jenkins, Terry Lavell, David Lopatis, K.I.May, M.J.Moran, Mick Norman, Anna Partridge/Ena Pertree, Rod Prince, Derek Pryce, Richard Rogers, Geoff S, D.Shaftoe, Bryan Smith, Lesley Smith, Puffer 'Dave' Smurff, Peter Staniforth, Rosetta Stone, Ken Taylor, Bill Thackray, Thamesmeado, Martin Weedon, Ian Whiteman, John Williamson, Sue Wilson, Jon Witts.

BREWOMATIC

MORE PROFITS WITH THE No.1 BEER LINE CLEANING SYSTEM - THE PERFECT PINT EVERY TIME

PRODUCT SAVINGS

- Facility to sell beer prior to clean or to clean quickly between barrel changes. Quick rinse facility also stops any fobbing on barrel changeovers.

TIME SAVINGS

- Option to use fast, standard or extended clean custom fit to your premises. The standard programme takes only minutes for the weekly clean.

INTERCOMMUNICATION

- A convenient two-way intercom between cellar and bars, garden, living quarters. Plus sounder alarm enabling attention to be drawn to a problem situation.

RENTAL

- No capital outlay - Convenient monthly payments - Service calls included
- Fixed term contract - 100% recoverable

APPROVED

- By many major and regional brewers. And used by over 10,000 customers.

TRIAL

- Customers can now evaluate the Brewmatic cleaning system and measure potential savings (in product and time).
- Beer Systems Ltd is so confident of increasing your profit that we will install the system on approval for 28 days without obligation.



For further details ring Beer Systems Ltd FREEPHONE 0800 316 0877

Carlton House, 101 New London Road, Chelmsford, Essex CM2 0PP

Telephone: 0800 316 0877 Fax: 0800 316 0876 Mobile: 07779 801097

Web Site: www.beersystemsltd.com Email: info@beersystemsltd.com



Its Champion !



**Hogs Back's
'A over T'**

**Supreme Champion Winter Ale
CAMRA's Winter Ale Festival
Manchester 2006**



Coming shortly to Wetherspoon's

**From early May Hogs Back's 'A over T'
will be available at J D Wetherspoon's.
Supplies are strictly limited so try one
while you have the chance . . .
This may never be repeated.**



**Also available Bottle Conditioned
by Mail Order from our website**

www.hogsback.co.uk

**or call our shop direct on
01252 784495**