

Vol 29
No 3

LONDON DRINKER

CAMRA
CAMPAIGN
FOR
REAL ALE

June
July
2007



Judging starts for the 2007 Pub of the Year (see page 20)

"India is 1,269,000 square miles.
Don't tell me Greene King
couldn't find it."

Mr N Parmar, Landowner, Rajasthan



The India Pale Ale that never made it to India.

In the late 1800s, we created an ale specifically for India. To help this crisp, refreshing beer survive the long sea journey, we brewed it with more hops. But when the pint took off in Britain, we didn't bother to ship it. Sorry Mr Parmar, you might have a big country but you're not getting the big taste of Britain's favourite IPA.

For more information on this great beer visit www.greenekingipa.co.uk



London Drinker is published by Mike Hammersley on behalf of the London Branches of CAMRA, the Campaign for Real Ale Limited, and edited by Geoff Strawbridge.

Material for publication should preferably be sent by e-mail to geoff@coherent-tech.co.uk.

Press releases and letters by post should be sent to Tony Hedger, Apartment 11, 3 Bewley Street, London SW19 1XE

Changes to pubs or beers should be reported to Capital Pubcheck, 2 Sandtoft Road, London SE7 7LR or by e-mail to capitalpubcheck@hotmail.com.

For publication in August 2007, please send electronic documents to the Editor no later than Wednesday 11th July.

SUBSCRIPTIONS: £3.00 for mailing of 6 editions should be sent to Stan Tompkins, 52 Rabbs Mill House, Chiltern View Road, Uxbridge, Middlesex, UB8 2PD (cheques payable to CAMRA London).

ADVERTISING: Peter Tonge: Tel: 020-8300 7693.

Printed by Cliffe Enterprise, Eastbourne, BN22 8TR

Views expressed in this publication are those of their individual authors and are not necessarily endorsed by the Editor or the Campaign for Real Ale Limited.

Advertise in the next
LONDON DRINKER

Our advertising rates are as follows:
Whole page £260 (colour), £220 (mono)
Half page £150 (colour), £110 (mono)
Quarter page £80 (colour), £55 (mono)
Phone Peter Tonge now on
020 8300 7693

In this issue

News round-up	4
Easy tasting	14
Pubs of the Year	20
Branch festivals	22-25
Hampstead pubs	26
John Young	29
Letters	30
Branch diaries	32
Capital Pubcheck	34
Membership form	35
London for free	44
Idle Moments	48
Crossword	50



Another budget for binge drinkers and alcoholics

In the budget statement from the Treasury in March, the Chancellor said that if the excise duty on spirits had risen in line with inflation then the tax would have, prior to this budget, risen by £1.79. Well, he didn't raise it this time, either, and nor for that matter did he increase the tax on alcopops. Every year, CAMRA complains at the extra 1p excise duty on beer, an increase that typically impacts on drinkers through a 5p or 10p increase in brewers' or pubcos' prices over the bar, but we have failed until now to expose the scale of market distortion engineered by a government that is arguably biased towards distillers if not actively prejudiced against beer drinkers.

Jeff Bell's letter on page 30 spells out the absurdity of such unequal treatment by a government rightly determined to reduce alcohol abuse. I believe, too, that drinking real ale in a pub is the healthiest, most responsible and most environmentally sustainable as

well as the most enjoyable alcoholic experience and I am disappointed that government action and media manipulation continue to conspire to destroy our centuries-old pub heritage.

Sitting in the Willoughby Arms recently I was trying to work out with licensee Rick Robinson (of *The Pub Landlord* fame) just how much we pay per unit of alcohol for a pint of session beer in a pub compared with a bottle of spirits in a supermarket. A pint, or two units, costs about £2.50. A half bottle of rum from the Co-op, or ten units, costs £4.99. As a route to alcohol abuse, drinking spirits is at least two and a half times less expensive; I say at least: the full bottle of rum costs only £8.99. Insofar as beer can do less damage, it should be much cheaper. If taxes are supposed to help discourage binge drinking, they should impact much more on the spirits that fuel it.

Geoff Strawbridge



Out and about on the website

Enjoy Derby's GBG pubs for a week with Paul Kirsten, join Owen Woodliffe sampling real ales on day trips with Enfieldian Tours or find out from Ken Donald about the beers available in China. Visit the Travel Pages at www.londondrinker.org.uk

Correction

The bookshop in East Sheen that stocks *Across the Commons* is called "Bookstop", not "Bookshop" as shown in the last *London Drinker*.

Beer – the cause of, and solution to, all of life's problems – *Homer Simpson*.

Encouraging view from CAMRA

CAMRA held its AGM and Members' Weekend in Wolverhampton at the end of April. The key policy debate was around the brewing industry in the 21st century. Chief Executive Mike Benner gave an upbeat address, seeing a promising future for real ale and cider as being the type of product that will benefit from the growing consumer preference for locally sourced produce that does not clock up excessive 'food miles'. The meeting consequently agreed the following policy:

- to highlight the environmental credentials of real ale;
- to promote the provenance and local identity of real ale, brewers and pubs;

- to support real ale brewers regardless of size, encouraging them when they support our policies and campaigning against activities which are contrary to our policies;
- to encourage consumption of real ale in pubs;
- to identify and expose distortions in the market for real ale.

The meeting was also addressed by Ralph Findlay, Managing Director of Marstons (Wolverhampton & Dudley Breweries as was). Mr Findlay spoke on the topic of how national, family and micro breweries can work together. He too saw a good future for real ale and stressed his company's commitment to it. He also explained the name change. The W&D name was too local and they did not want to invent a meaningless new name so they opted to use the Marstons name because it is a strong brand.

Some might have had doubts

about Marstons' commitment, however, because shortly before the meeting they had announced the discontinuation of Hanson's Mild. Mr Findlay graciously accepted CAMRA's petition against this move before he spoke.

Promising research

CAMRA are not the only ones taking an optimistic view. The British Guild of Beer Writers commissioned a company called Storm Lantern to research Britain's drinking habits. From interviews with 25,000 people, the findings were that beer drinkers are young, affluent and sophisticated and that there are now over 7.2 million people who want to read more in the media about beer, an increase of over one million since the research was first undertaken in 2005.

Beer fans shatter the stereotype many have of beery people. They are upmarket, tend to be

De Olde Mitre

Ely Court, between Ely Place
and Hatton Garden,
London EC1N 6SJ
020 7405 4751

**Historic and traditional Ale-House
CAMRA Listed • Cask Marque Award**

*Adnams Bitter and Broadside and
Deuchars IPA always available.*

*Scotty and Cathy would like to thank all
our customers for making our
MILD MONTH such a success.*

*Remember we are open for the Great
British Beer Festival weekend
11th and 12th August 12 noon to 5pm.*

**Daily Telegraph 'Perfect Pub Award'
London & Kent Region (May 2006)**

Open 11-11pm Monday to Friday
(try our famous toasties)

Nearest tubes: Chancery Lane/Farringdon

The Oakdale Arms

283 Hermitage Road, London N4 1NP

Summer Beer Festival

19-23 June

Royal Ascot Week

*Over 30 real ales
ciders and perries
and all the week's
racing on the BIG screen*

DON'T MISS IT!!



For a taste of Thailand
we'll take you there.

Authentic, delicious Thai food from traditional Fuller's pubs.



Old Pack Horse

434 Chiswick High Road
Chiswick
London
W4 5TF

T: 020 8994 2872

Old Fish Market

59 - 63 Baldwin Street
Bristol
BS1 1QZ

T: 01179 211 515

Harpden Arms

188 High Street
Harpden
Hertfordshire
AL5 2TR

T: 01582 461 113

Elephant Inn

283 Ballards Lane
Finchley
London
N12 8NR

T: 020 8343 6110

Queen's Head

120 Church Street
Old Chesham
Buckinghamshire
HP5 1JD

T: 01494 778 690

Prince Albert

30 Hampton Road
Twickenham
Middlesex
TW2 5QB

T: 020 8894 3963

Latymers

157 Hammersmith Road
Hammersmith
London
W6 8BS

T: 020 8748 3446

Churchill Arms

119 Kensington Church St.
Kensington
London
W8 7LN

T: 020 7727 4242



aged 25-44 and half a million of them are women.

British Guild of Beer Writers Chairman Tim Hampson said: *"The research buries the myth that only wine is the drink of sophistication. Beer is not only an equal to wine, it clearly deserves greater serious coverage by the media – especially among those papers trying to appeal to people in the 25-44 age group. Beer fans are into beer because they are interested in food and drink generally. They also enjoy drinking good quality wine, like new recipes, new food products and exotic dishes. And better still they are avid readers of broadsheet press and magazines."* Apparently beer drinkers are twice as likely to read papers such as the *Independent*, *Guardian* and *FT* as the population as a whole and 20% of all *Guardian* readers are beer fans. Hmm... interesting...

Misleading dispense

CAMRA's National Executive put forward an emergency motion on the subject of a new wave of fake handpumps. These appear to be traditional handpumps but are designed to dispense processed beer. I have received no reports of anything like this in London but if any reader comes across anything suspicious, please let us know. The handpump is the symbol of real ale; deception like this is simply not acceptable.

Smoking ban latest

I have received some petition forms against the ban. We should acknowledge that the ban is not universally popular and so if anyone wants to add their name, contact

www.democraticchoice.co.uk.

Democratic Choice describe themselves as an independent non-profit organization in support of liberty, equality, fairness and tolerance. I can't help thinking however that it is all too late.

Admiral Taverns has acquired 869 pubs from Punch Taverns for £326m (an average of £375,000

per pub). Reports say that these pubs have been identified in advance of the ban as smaller outlets with little potential for food sales. Marstons have similarly identified some 300 pubs for disposal. There is, of course, no guarantee that any of these pubs will continue as licensed premises.

A different approach to the challenge presented by the ban is being tried by Mike Mitchell, licensee of the Endeavour pub in Chelmsford. He has engaged a hypnotherapist to run 'giving up smoking' sessions in the pub. More than half of the regulars who have attended have either quit or cut down markedly.

The responsibility for enforcement of the ban falls to local authorities. However, a survey carried out by the London Lite paper reveals that of the 33 authorities in Greater London, only seven will be recruiting additional staff. Most are simply giving the new work to their already overburdened Environmental Health Officers. Still, if they have got to be in the pub anyway, perhaps they could also check for full pints.

Curiously though, just as sales of them must be booming, the garden centre chain Wyevale has stopped selling patio heaters because of their climate change impact.

The Publican Live

The trade paper *The Publican* held an exhibition at Olympia in April and courtesy of our Editor, that nice Mr Strawbridge, I attended with my first ever press pass. The show gave an interesting snapshot of the modern pub trade. The smoking ban dominated the event, with large displays from catering supplies and equipment companies – 3663 had a huge stand – and those selling outdoor shelters and heaters. One item caught my attention; it was a tall patio-type heater with three-quarters sides to it. It looked like an old-fashioned pissoir minus the p*ss. You could only get one per-

son in there at a time so quite how much use it would be, I really don't know. I was however struck by the price of this equipment. Equipping a pub these days is not a cheap exercise.

Also heavily featured were companies selling security equipment and gambling machines, finance companies and crisp-makers – loads of them. A few breweries had stands – Archers and Sharps for example, plus Bulmers Cider. Encouragingly, there were two companies that produced traditional pub signs, so all is not yet lost.

News from Fuller's

Discovery Blonde Beer, as it is now known, has proved to be a successful brand. Fullers have however decided to "tighten up" on the beer's serving temperature. From now on, Discovery will only be served through a cooler, at a temperature of between eight and 10 degrees. CAMRA regards proper cellar temperature to be between 12 and 14 degrees. To emphasise the fact that Discovery is always served chilled, the brand will now look cooler on the bar, with a new white-handled font and the word 'chilled' added to the pump clip. As an extra reminder for customers at eye-level, the pump handle features the words Delicious Chilled Blonde Beer.



Fuller's brands marketing manager, David Spencer, said: *"Discovery has performed very well for us, but it is clearly most popular where it is served at a lower temperature. With this in mind, we have decided to only sell the beer in venues that have the ability and equipment to serve the beer between eight and 10 degrees. Discovery is fulfilling a useful role as a bridge from lager to real ale, and the lower temperature aids this process."*

Fullers have also launched a new TV advertising campaign for their flagship ale, London Pride. Fuller's Beer Company managing director, John Roberts, said: "Whenever we conduct research into why people choose London Pride, the outstanding quality and flavour of our beer always comes out on top. We wanted a campaign that reflected this, and one that focused on how we ensure the quality is there in the first place, which is the pride our

brewers put into every drop."

The ads, screened throughout April and May on terrestrial channels in London and the South East, and nationwide on satellite, cable and digital, appear around programmes that appeal specifically to an upmarket male audience, such as live sport, dramas and documentaries. Sounds as if Fuller's have read the research mentioned above.

News from Young's

Young's have terminated their contract with CAMRA founder-member Michael Hardman for the company's public relations work. This seems a touch mean after his 26-odd years of working for them and especially in view of the work that Michael put in for them during the brewery closure, but no doubt they have a different view of their business now.


Michael's good friend, Roger

Protz, was refused permission to put a motion to the CAMRA Members' meeting as it was not considered to be appropriate business but he did request that all CAMRA members contact Young's Chief Executive, Stephen Goodyear, on the subject. Roger certainly has strong views on the matter, as anyone who has seen his *Morning Advertiser* article of 29 March will know. You can probably still see this on their website.

It should of course be remembered that 130 other people lost their jobs at Young's and there is a rumour that delivery work is being contracted out, so that there may well yet be more.

News from the pub chains

Wetherspoons have issued a profits warning in anticipation of the cost of preparing their bars for the smoking ban, having extended existing no-smoking



Only £5.95
inc. p&dp & VAT

See our new
T-shirt at it's best - visit
www.wadworth.co.uk/tshirt

Found the pub. Drank the beer. Now get the 'T'.

Send the completed form below, stating your size: M, L, XL or XXL together with a cheque/P.O for £5.95 each, payable to Wadworth & Co. Ltd to: Northgate Brewery, Devizes, Wiltshire, SN10 1JW.

Offer closes 31st December 2007. Subject to availability.
Please allow 28 days for delivery.

Order Form (please complete) LD

Name: _____

Address: _____

_____ Postcode: _____

Size: _____ Quantity: _____

No. of shirts: _____ Total £: _____

areas to 80% of customer space. They have however also spent a lot of money on their new chilling systems. The company is prospering overall however with like-for-like sales over the 13 weeks to 29 April increasing by 3.4%.

Wetherspoons also appear to be starting a cider price war. I noticed recently that they are selling Magners for £2.99 but Bulmers for £2.79. Meanwhile, Magners are trying out their product in Barcelona and Munich, where the launch will overlap with the Oktoberfest. You have got to admire their confidence but then perhaps reasonably so because brand-owner's C&C profits rose 77% to £144.5 million in the year ending 28 February with a 232% (yes 232) increase in sales in Britain in that period.

Spirit Group, part of Punch Taverns, is giving 'serious consideration' to opening its 273 pubs across the country from 7pm to

11pm on Christmas evening. The move is meeting opposition from publicans, trade unions and the Church.

Scottish & Newcastle are coming under takeover pressure with a £9 billion joint deal from Diageo and SABMiller. The plan is that Diageo would take the UK beer business (John Smiths, Fosters, Strongbow etc) whilst SABMiller would take S&N's overseas assets. S&N said that the report was "no more than media speculation".

Sustainable communities

CAMRA was well represented, nationally and locally, at the rally held on 26 March at the Methodist Central Hall in support of the Sustainable Communities Bill, which is currently going through Parliament. The campaign is backed by many other bodies including the Women's Institute and Greenpeace. Although the rally was addressed

by party leaders Sir Menzies Campbell and David Cameron plus the Communities Minister Phil Woolas, CAMRA is, of course, non-party political. We are looking beyond party politics to the opportunities that the bill would give us to promote local brewing, local beers and local sourcing of ingredients and to protect local pubs from closure and conversion or demolition.

News from Twickenham Fine Ales

TFA did well at the recent Reading Beer Festival. There was a 'Local Beer of the Festival' competition which included around 80 beers from 23 breweries located within 30 miles of the festival site 'as the crow flies'. This took place in the form of blind tastings on the Thursday afternoon before the festival opened and the results were announced soon after. Daisy

Join John & Heather at

The Brewery Tap

Three rotating Real Ales (many from micro-breweries)

Fuller's London Pride and Adnams Bitter permanently and now we often stock mild ale and Aspoll's Suffolk Cider.



Food served every lunchtime and Tues, Wed and Thurs evenings.

Quiz on Mondays from 8.30pm

Open all permitted hours.

Digital juke box.

68 High Street, Wimbledon Village SW19

(10 minutes walk from Wimbledon station)

020 8947 9331



ALE AND WINE WEDNESDAY

At your local Wetherspoon pub

Perfect Wine



Perfect
Quality,
Freshness,
Temperature
every time.

Finest Guest Ales

Featuring ales such as:



Over 600
regional
ales sold
nationally.

SPECIAL PRICES EVERY WEDNESDAY

Find your nearest Wetherspoon at www.jdwetherspoon.co.uk at participating free houses.

wetherspoon

Cutter came 1st in the Strong Bitter category and then 2nd overall whilst Crane Sundancer came 2nd in the Session Bitter category.

Glasses ban proposal

Pass this on from the programme for Reading Beer Festival. Thames Valley Constabulary have proposed that any licensed premises in Reading serving alcohol after 11pm will, on those nights concerned, have to serve all drinks in plastic glasses from 9pm onwards. Once again, we have the prospect of a 'one answer to all problems' solution – and a false one at that – being imposed on us.

Fortunately, the licensed trade are against this as well. I might add, having mentioned the Sustainable Communities Bill, that these polycarbonate glasses are made from an unsustainable oil-based plastic which is beyond most local authority recycling capabilities. They might also be a

health risk, leaching chemicals into the beer.

Greene King

Further to my editorial last issue, I should make it clear that I am not advocating outright opposition to Greene King, just to some of their policies and practices. They provide the only real ale available in many areas and their commitment to real ale is unquestionable. I am pleased to report that Mark Bravery, a South West London Branch colleague, recently spotted a pump-clip for Morland Tanners Jack that stated 'brewed in Bury St Edmunds'.

I should also, in fairness, mention a situation that uniquely confounds my point about relocating beers. When Ridleys took over Tolly Cobbold, they actually dismantled the brewing plant and moved it to Hartford End. Does anyone know what became of it when GK took over?

There has been a successful

resolution in the dispute over the Lewes Arms in Lewes, Sussex. For those who don't know the story, this is a former Beards house acquired by Greene King in 1998 which had until last December always sold Harveys Best as a guest beer. GK however decided to end that arrangement and as a consequence, regulars staged a boycott of this most traditional of pubs. It was very effective and GK have conceded. Harveys is back on sale.

Meanwhile, Greene King have reorganized their managed pubs operation into two divisions, 'Destination' pubs, of which there are 280 and 'Local' pubs (510). The change sees the departure of Mark Angela, the current head of the Managed Pubs Division and a great defender of the removal of Harveys from the Lewes Arms. The two events are not thought to be connected. The Destinations pubs will be run by the former Chief Executive of Hardys &

The Magpie & Crown

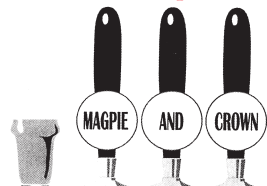


- ◆ Draught Budvar, Hoegaarden, Paulaner Münchener Lager, Stiegl Lager & Bavarian Wheat Beer
- ◆ Quiz Night Thursday
- ◆ Bar billiards
- ◆ Cycle rack
- ◆ 2007 Good Beer Guide
- ◆ Beers from Grand Union and Twickenham Breweries
- ◆ Hours of opening: Mon-Wed 11-12 midnight, Thurs-Sat 11-1am, Sun 12-12 midnight

AT THE TIME OF THIS ADVERTISEMENT WE HAVE SERVED ~~1780~~ 1816 DIFFERENT BEERS

128 High Street
Brentford, Middx
Tel: 020 8560 4570

- ◆ Only 30 minutes train journey from main line Waterloo
- ◆ 4 ever-changing guest ales
- ◆ 3 traditional ciders and the occasional perry
- ◆ Foreign bottled beers selection
- ◆ Food is back
Tues-Sat eves 6.30 - 10pm
Sat lunch 12 - 2pm
Sun 12.30 - 5.30pm



Steve and the staff look forward to seeing you soon

2007

Rhythm Festival

TWINWOOD ARENA
Clapham, nr. Bedford
MK41 6AB

August 3\4\5

First acts booked (alphabetical order):

Three days of great music on three stages plus 'fringe' events. Large variety of high quality food at sensible prices. Delicious real ales, beers & lagers from Wells & Young's of Bedford. Guest ales. Real ciders. Supervised campsite, quality showers, luxury loo. Comedy Stage. Folk Club. 'The Woodlands' Alternative Therapy and Culture Field. Enlarged Kids' Domain, Children's Entertainers, Dodgems and Junior Olympics. Solar-Powered Cinema. Top Roots, Blues & Folk DJs. General Store, Workshops, Crafts & Trade Markets. Free car-parking. Taxi shuttle from Bedford rail station.

Adult weekend tickets £89
Weekend youth (12-17) £69
Kids (11 and under) one free with each adult, then £25 each. Camping £20 per tent, £30 per campervan. Book online or by post (no booking fee) cheques to 'Smarter Music Ltd':
16 The Woodlands, London SE13 6TY

Ticket hotline/info:
01234 350413

Sunday

ROCK

ALABAMA 3
DR JOHN
STEVE HARLEY
& COCKNEY REBEL
HOTHOUSE FLOWERS
SETH LAKEMAN
LEVELLERS
JOHN MAYALL
& THE BLUES BREAKERS
PRINCE BUSTER

BAND FROM COUNTY HELL • THE BEAT •
THE BLOCKHEADS • BUICK 6 •
BARRY CRYER & RONNIE GOLDEN •
DR FEELGOOD • EDDIE & THE HOT RODS •
DEAN FRIEDMAN • IAIN MATTHEWS •
THE MEN THEY COULDN'T HANG •
RICHIE MILTON & THE LOWDOWN •
JOHN OTWAY/WILD WILLY BARRETT
REUNION • DAVE PEGG & PJ WRIGHT •
TERRY REID • NEVILLE STAPLE •
SKACOUSTICA • 3 DAFT MONKEYS • TINY
TIN LADY • THE TURNS • KING NAAT
VELIOV'S ORIGINAL KOKANI ORKESTRA •
WAKING THE WITCH • THE YARDBIRDS •
STAN WEBB'S CHICKEN SHACK

Line up subject to change

Visit us/book tickets online (no booking fee):

www.rhythmfestival.net

Hansons, Jonathan Webster. The Local pubs will be run by someone recruited from Sainsburys.

Heritage pubs website

CAMRA has launched a new website www.heritagepubs.org.uk - devoted to the most important and unique pub interiors in Britain. The site celebrates those pubs which remain wholly or largely as constructed. They range from simple rural pubs to late-Victorian extravaganzas, from the genuinely old to the aggressively modern, from urban back-street boozers, through suburban estate pubs and picture postcard rural idylls. Every architectural style is represented, be in Art Nouveau or Art Deco, High Gothic or post-war Brutalism. The centrepiece of the site is CAMRA's National Inventory of pub interiors of exceptional historic or architectural importance. The website offers descriptions and in many cases photos of the 254 pubs currently on the National Inventory. Visitors to the site can easily locate entries in particular parts of the country or in whole regions.

And finally...

I mention this only as a warning to others in the spirit of CAMRA's policy of sensible drinking. Walter Reckling, a German lorry driver, was running late, possibly because he had stopped for a few beers. He therefore decided to cook himself some sausages on the move using a portable gas stove. Unfortunately, it toppled over, burning out his lorry. Walter was three times over the limit...

In Brazil, a former beer-taster for AmBev has succeeded in a claim for damages worth £25,000 against his former employer for not taking proper care of his health in preventing him from becoming an alcoholic. His work involved drinking 16 to 20 small glasses of beer each 8-hour shift. AmBev's defence was that he was already an alcoholic when they recruited him but the judge's

response was that they should not have recruited him then...

In Stockton-on-Tees, according to the Sun, the Council has printed 25,000 beer mats with pictures of persons who are banned from the city centre under ASBOs. Drinkers are asked to report any sightings, although this may be difficult because after ten minutes on pub tables, I suspect that all of those featured will have moustaches and glasses.

Meanwhile, the beer mats advertising Carling's latest cold fizz, C2, carry the strapline 'Great tasting mid strength'. Well I suppose 2% ABV is midway between water and the average beer

The new St Pancras Eurostar terminal will feature a Champagne Bar, 90 metres in length. Why not a British and Continental beer bar?

Tony Hedger

Take it to the top

Sign CAMRA's Full Pints Petition to the Prime Minister

Pub customers were robbed of £481 million in 2006. Beer drinkers are being mugged of £1.3m a day! How and why are these crimes against beer drinkers happening? The answer - short measure.

Recent CAMRA surveys of local authorities' trading standards departments have revealed that 26.6%, more than a quarter of all pints are served over 5% short. And the worst example found by officers was 13% short.

CAMRA is calling on the Government to stop this legalised robbery. 76% of pub goers want the Government to stick to its promise, made in 1997, to ensure that drinkers get a full pint. Since Labour made that promise, beer drinkers have lost an estimated £4.5 billion.

In April, CAMRA launched a national petition at www.takeittothetop.co.uk calling on Government to define a pint of beer as a pint of beer and to require licensees to endeavour to serve a full pint every time. Drinkers can alternatively sign and return petition cards for the Prime Minister's attention. Credit card sized short measure cards are available so that drinkers can get an immediate check by how much they are being short changed.

Pub managers are often under pressure from their bosses to squeeze extra pints from their casks and kegs. The training manuals of some pub companies advise licensees to serve 95% pints. The current British Beer and Pub Association code of practice recommends that its members serve a 95% pint to customers but that if they ask for a top up it should be given, and with good grace. But when was the last time you shopped for a kilo of potatoes or a dozen eggs and had to ask the shop keeper to give you more because they had originally given you short measure?

So let's end this short measure disgrace. For the first time in its 35 year history, CAMRA has taken out advertisements in national media in order to let consumers know how to make a stand against this unfair practice. Click on www.takeittothetop.co.uk and sign up to the petition.

Letters and articles for publication in London
Drinker may now be submitted online at
www.londondrinker.org.uk

Exceptional

REFRESHINGLY HOPPY PREMIUM GOLDEN ALE

"S.A Gold is a full-flavoured, hoppy and refreshing golden ale brewed to 4.7%. The beer is late-hopped using Cascade and Styrian Goldings, giving it complex and refreshing citrus aromas and flavours. It's delicious on its own and also makes a great accompaniment to food."

Bill Dobson, Head Brewer



Please enjoy responsibly

www.sabrain.com



Easy tasting

Last year CAMRA teamed up with a number of brewers, initiated by Everards from Leicester, to encourage people to appreciate the variety of tastes associated with real ale. Called Cyclops, after its one eye imagery, the idea is to have a universal tasting scheme that is simple to comprehend and would help to demystify tasting beer. This came out of research that showed that one in three adults thought that such a scheme would encourage them to try more real ale. The number increased with those aged 18-24; the scheme offers a genuine opportunity to encourage younger people to try real ale.

With the summer real ale festivals in full swing, and the Great British Beer Festival just weeks away (7-11 August, Earls Court), what better time to get to know the scheme and to use it to help you choose the beers you will like.

With over 2,500 different real ales being brewed in Britain by over 600 breweries, some help in finding your way through is always welcome. Cyclops uses easy to understand descriptions and eye, nose and mouth symbols to help inform and educate drinkers of what different beers look, smell and taste like before they even try or buy a beer. It

also covers the beer style and strength of the beer. However, even within one beer style there is a large range of tastes and so, to help guide people a little further, each real ale is given a score out of five for how bitter and sweet it is.

So what are the beer styles? As part of its Champion Beer of Britain and Winter Beer of Britain judging, CAMRA divides real ales into thirteen types, which helps give some overall guidelines as to what the beer is. The first six beer styles you will find at the forthcoming Great British Beer Festival and, with the hundreds of beers available, these give you a great chance to compare and contrast and become your own expert:

- **Milds, ABV <4%:** These are not always dark and can range from black to dark brown to pale amber in colour. Malty and possibly sweet tones dominate the flavour but usually the hops (and bitterness) is light.
- **Ordinary bitters, ABV <4%:** Typically brown, tawny, copper or amber but can be paler. Medium to strong bitterness with hops and a little fruitiness.
- **Best bitters, ABV 4 - 4.6%:** More robust than ordinary bitters. Colour range is similar to bitters. They have medium to strong bitterness

CAMRA Award winner two years running

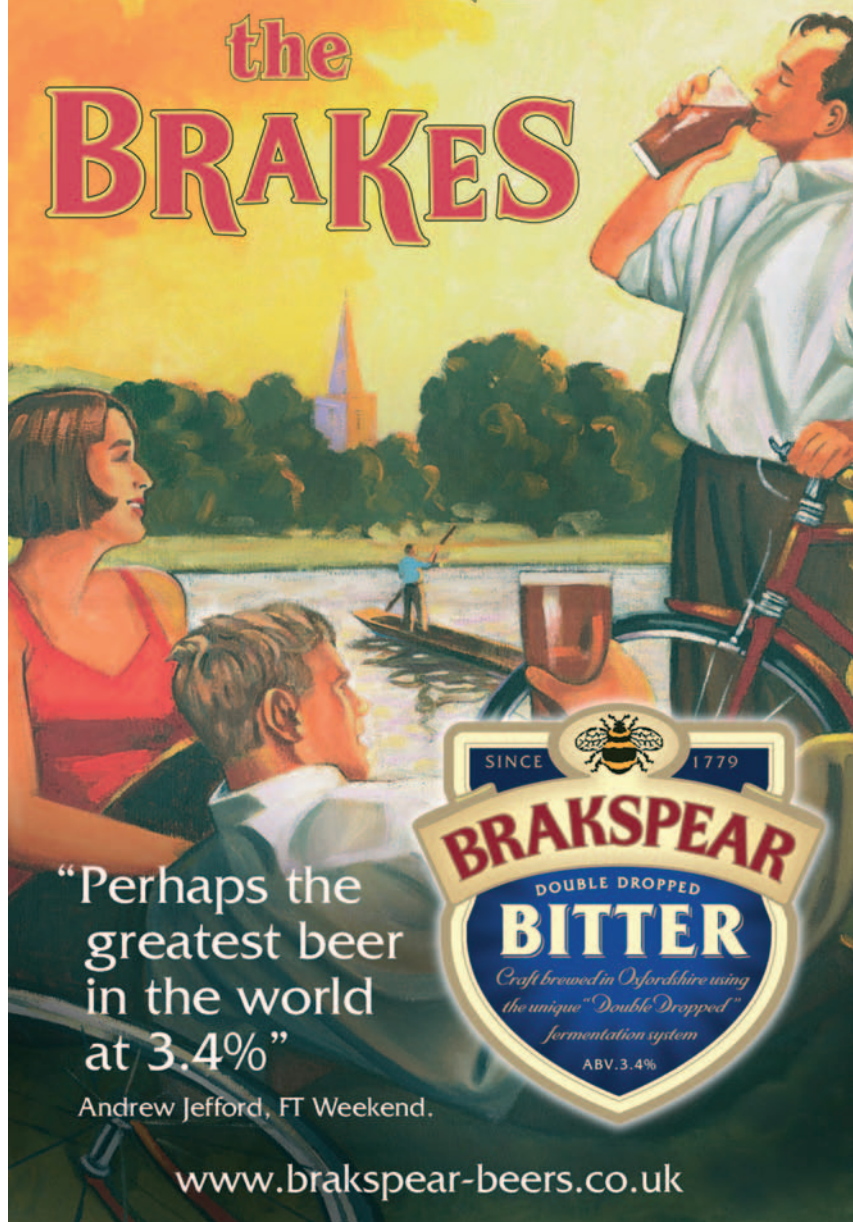


The Red Lion
Linkfield Road
Isleworth
Middx TW7 6QE
www.red-lion.info
020 8560 1123
(BR 2 mins)

Beer Festivals May & August

- ★ The Friendliest Pub in Town
- ★ Live Music
- ★ Traditional Real Ales
- ★ Cask Marque Approved
- ★ Live Sports TV Coverage
- ★ Amateur Pub Theatre
- ★ Pub Garden
- ★ Traditional Local

It's time to **APPLY** the **BRAKES**



“Perhaps the
greatest beer
in the world
at 3.4%”

Andrew Jefford, FT Weekend.



www.brakspear-beers.co.uk

balanced by some maltiness. A strong hop character should be evident but fruit should be limited.

- **Golden ales**, ABV <5.3%: Pale amber, gold, yellow or straw coloured with low to strong bitterness and a strong hop character creating a refreshing character. A light to medium malt character and fruit may be present.
- **Strong bitters**, ABV 4.6 - 6.5%: Full bodied and hoppy, often with strong malt notes that linger. They have medium to strong bitterness and fruit. Typically brown, tawny, copper, or amber but can be paler.
- **Speciality beers**, ABV variable: These are different from standard British cask beer styles and may be produced using one or more novel ingredients including fruits, herbs, honey, cereals other than malted barley and flowers other than hops. The category includes cask-conditioned lagers, wheat beers, spiced and fruit beers.

WINTER BEERS:

- Loosely called, because many of these are only brewed in winter but you can find some brewed all year round, these comprise:
- **Old ales**, ABV 4 - 6.5%: Typically black or dark brown but can be paler; they are full bodied with a malty richness with some fruitiness. **Strong milds** are similar but can have a light roast character and some caramel.
- **Porters**, ABV 4 - 6.5%: Complex in flavour and are typically black or dark brown. The darkness comes from the use of dark malts, unlike stouts, which use roasted barley. Porters should have a pronounced finish with a bitter hoppy character.
- **Stouts**, ABV 4 - 8%: Typically black and includes roasted barley, which dominates the flavour. **Dry stouts** have an initial malt and caramel flavour with a dry, roast bitterness in the finish. **Sweet stouts** are distinctively sweet in taste and aftertaste through the use of lactose (milk sugar), which can be cloying.
- **Barley wines**, ABV 6.5 - 12%: Colour can be amber to copper to tawny in colour and can range from sweet to dry. Many barley wines have a fruitiness that is balanced by the bitterness. **Strong old ales** have similar characteristics but are typically dark brown or black and may have a very rich, malty character.

STYLE

**Beer styles - e.g. Bitter
Golden Ale
Mild, Stout, Porter**



**See - e.g. Pale straw
Golden, Copper
Dark Ruby, Black**



**Smell - e.g. Chocolate,
Toffee, Roasted, Citrus,
Berries, Spicy**



**Taste - e.g. Bitter, Rich,
Fruity, Refreshing,
Zesty, Sweet, Smooth**

BITTER



SWEET



If you want to find out more, CAMRA has produced a Cyclops information leaflet which it hopes will increase real ale sales for all the breweries participating in Cyclops. Licensees are being encouraged to participate and can order point of sale material such as posters, beer mats, tasting cards, leaflets etc direct from breweries that have already produced their material by visiting www.camra.org.uk/cyclops. Over the next few months it is hoped to have a directory of hundreds of Cyclops tasting notes on the website for licensees to use and promote to their customers. Keep a look out and encourage your local pub to get involved. It really could help increase real ale sales.

Christine Cryne

Advertise in the next LONDON DRINKER

Our advertising rates are as follows: Whole page £260 (colour), £220 (mono)
Half page £150 (colour), £110 (mono), Quarter page £80 (colour), £55 (mono)
Phone Peter Tonge now on 020 8300 7693

Le Gothique

RESTAURANT & BAR

The next time you go out for a drink with friends or a bite to eat why not consider somewhere completely different. The grade 11 listed high Gothic splendour of the Royal Victoria Patriotic Building houses the discreet, hard to find, oasis that is...Le Gothique. This is not a chain or a rolled out theme pub. Le Gothique is just a quirky bar and French biased restaurant. Perhaps you should think of us as a BistroPub.

Off street secure free parking is available for those intrepid individuals who make the effort to go somewhere out of the ordinary. What you will find is a small gothic bar mezzanine floor dining room and award winning garden. Very reasonable bar and food prices make this charming privately owned venture an ideal location for affordable private parties and weddings (up to 90 seated).

OPEN:

Monday to Friday 12 noon to 12 midnight

Saturdays 6 - 12 midnight

Sundays by arrangement.

Daily lunchtime specials £8.95
Bar meals all £6.95 - £9.95

Evening meals 3 courses £15

Real Ales from Ballards of Hampshire and Shepherd Neame of Kent. Large selection of quality wines by the glass and bottle.



CONTACT US:

The Royal Victoria Patriotic Building,
Fitzhugh Grove, Trinity Road,
London SW18 3SX

Tel: 020 8870 6567 / 020 8871 0130

e-mail: mark@legothique.co.uk

Website: www.legothique.co.uk



Great British Beer Festival 2007

The Great British Beer Festival will be held again this year at Earls Court, between Tuesday 7 and Saturday 11 August. Save money, avoid the queues and book your tickets today!

Tuesday 7 August Trade Session 12.00-17.00: Admission to trade by advance ticket only

Tuesday 7 August 17.00-22.30; Wednesday 8, Thursday 9 and Friday 10 August noon-22.30: Non-members £6.00, CAMRA members £5.00

Saturday 11 August 11.00-19.00: Non-members £5.00, CAMRA members £3.00

Tickets purchased on the door will be priced at £8.00 for non-members and £6.00 for members Tuesday-Friday and £6.00 for non-members and £4.00 for members on Saturday.

To buy tickets, please visit online booking site www.gbbf.org or call the booking hotline on 0870 380 0150.

Win a pair of Great British Beer Festival tickets!

CAMRA is offering 25 lucky winners a pair of Great British Beer Festival tickets. All you need to do to enter this competition is email or post your answer to this simple question by Friday 6 July.

When does the 2007 Great British Beer Festival start?

Please title your email 'GBBF Competition 2007' and send your answers to tony.jerome@camra.org.uk or post to Tony Jerome, GBBF Competition 2007, Senior Marketing Manager, CAMRA, 230 Hatfield Rd, St Albans, Herts, AL1 4LW. Winners will be notified and sent their tickets before Friday 13 July. If you are not a CAMRA member and would like to be sent some more information on our organisation then please let us know on your email or posted entry.



Be Ringwood's brewer for a day

At the Great British Beer Festival, CAMRA is auctioning the unique opportunity for two people to brew for a day in autumn 2007 at Ringwood's Brewery in Hampshire.

Back in the early 1800s the town of Ringwood had four breweries but only one, Carters, made it into the next century, surviving a further 23 years. It was famous for its 5000 gallon vat inside which parties were held! Ringwood, which is on the site of a brewery owned originally by Stephen Tunks, was one of the earliest microbrewers and has gone from strength to strength, celebrating its 30th birthday next year.

Ringwood has a number of well known beers and anyone getting this auction lot will be in for a real taste treat. Their regular beers feature Fortyniner (named after its strength at 4.9% ABV), which is one of the brewery's older beers, first brewed in 1978. Its strongest beer, Old Thumper at 5.6%, came into being the next year and was named through a competition in the local press. It won CAMRA's Champion Beer of Britain in 1988. In 1980, Ringwood started brewing another winner, the XXXX Porter, which won Silver in CAMRA's annual Winter Beer Competition in January 2002.

The auction will be taking place on the Thursday evening 9 August at Earls Court. If you can't get there, postal bids are being taken; contact: baustin@supanet.com. Alternatively, you could visit Ringwood on one of their summer brewery tours, which take place every Wednesday from May to September: www.ringwoodbrewery.co.uk. What better way to celebrate the success of one of Britain's flourishing small brewers.

Corporate Hospitality

For work colleagues or clients, the Great British Beer Festival can offer a variety of packages to suit most tastes and budgets. Please contact georgina.rudman@camra.org.uk

Woodcote Festival of Ales, Friday 13 to Sunday 15 July

Moving and stationary steam engines, vintage vehicles, art and craft fair, aerobatic displays, hot air balloons, food stalls, live music on Friday and Saturday evenings and over 35 beers from local brewers, cider, perry and wine. Bar open Fri.6-11; Sat.11-10.30; Sun.12-5.30.

Entry to rally site off A4047, Woodcote, Oxfordshire, **free on Friday but £8 Sat and Sun or £6 for card carrying CAMRA members** (£4 for children and senior citizens). Thames Travel X40/142 service to site and from Reading Station. Why not make a weekend of it? Camping available for working members. www.woodcote-festival-ales.org.uk



A genuine Free House featuring a selection of the very best in Cask Ales, Traditional Cider and Perry

- Mild always available
- Liefmans Kriek on draught
- Wide selection of continental bottled beer including Duvel and Chimay
- Function room free to CAMRA members
- Thursday night is Quiz Night
- Jazz piano Sunday afternoons
- Jazz/Blues every Friday and Saturday evening
- Open daily from midday



**CAMRA
NORTH LONDON
PUB OF THE YEAR
1995, 1996,
THE MILLENNIUM 2000
AND 2004**

**26 Wenlock Road
London N1**

020 7608 3406

Nearest Tube stations are Old Street (exit 1) and Angel. Wenlock Road is off City Road via Windsor Terrace
<http://www.wenlock-arms.co.uk/>

THE ★ STAR

**17 Church Street
Godalming, Surrey**

4 mins from Godalming station
on the Waterloo/Portsmouth line

**Open all day
7 days a week**

**We now have 5 draught
ciders available plus 3
from the cellar as well as
beers also dispensed from
the cellar**

**Thank you everybody for
your continued support**

**DON'T FORGET
HALLOWEEN -
CONCENTRATING ON
BEERS FROM THE
LAKE DISTRICT**

**Look forward to
seeing you**

**More details available on line:
www.thestargodalming.co.uk**

CAMRA Greater London 2007 Pub of the Year Competition

Shown on the cover is our 2006 Pub of the Year, the **Lion**, 27 Wick Road, Teddington. The Lion enters the 2007 competition once again as the CAMRA Richmond & Hounslow branch winner. This year's other entrants are the **Robin Hood & Little John**, 78 Lion Road, Bexleyheath; the **Cricketers**, 47 Shirley Road, Croydon; the **Palm Tree**, Haverfield Road, Mile End; the **Wonder**, 1 Batley Road, Enfield; **Woodies**, Thetford Road,

New Malden; the **Calthorpe Arms**, 252 Grays Inn Road; the **Red Lion**, 10 North Road, Bromley; the **Britannia**, 1 Church Road, Barking; the **Bricklayer's Arms**, 32 Waterman Street, Putney; the **Crown & Sceptre**, 34 Holland Road, Kensington; and the **Fox**, Green Lane, Hanwell. Contact your local CAMRA Branch (see pages 32 and 33) if you would like to help us decide the winner. It's thirsty work!

Bexley Pub of the Year

No guesses as to the winner voted by local CAMRA members. Yes, it's the Robin Hood and Little John, Lion Road, Bexleyheath, which has won for the eighth consecutive time. If you have never visited this delightful little backstreet pub with eight well-kept real ales on offer do so immediately you won't be disappointed! Since 1980 the Johnson family Ray, Caterina and son Tony, have run a very friendly, welcoming pub. At lunchtimes (except Sunday) Caterina's home-cooked food with themed specials and regular Italian dishes warrant a mention. These can be eaten inside at tables made from old Singer sewing machines. On 9 May the 2007 presentation took place, with a mild also available as part of CAMRA's Make Made a Mild Month campaign.

Runner-up was the Old Wick in Vicarage Road, Bexleyheath, a Shepherd Neame tied house that features all the seasonals including the porter when available, and in third place was the Black Horse in Albert Road, Bexley, another back-street local with

good lunchtime food, where Courage Best is complemented by a couple of ever-changing guest ales. Once again narrowly beaten into fourth spot was the Portrait in Elm Parade, Sidcup. This Smith and Jones Barracuda Group pub sells Greene King Old Speckled Hen, normally an ale from both Westerham and Archers and one other.



Kingston & Leatherhead Pub of the Year Awards 2007

Both Kingston & Leatherhead CAMRA Pubs of the Year are hidden gems, slightly off the beaten track..

Surrey winner, the **Royal George**, 130 Hersham Road was cut off from the village by the A244 bypass many years ago and has been in the Good Beer Guide many times. This is a carefully run Young's pub with a South London born tenant.

Landlord Ray Bush commented "This is a real local and my recipe for success is an excellent team, including my wife Sandra, and Simon the cellarman, who is an unsung hero." The recipe is also helped by a selection of Thai food, which complements the real ale very well. Built in 1964, the local, which has two spacious bars, is named after an 18th Century ship.

London winner, **Woodies**, originally a cricket pavilion, is still full of sporting memorabilia, predominantly London football programmes from the last 20 years. It is off Thetford Road and is also known as 'New Malden's best kept secret!'

A delighted landlady Linda Thompson-Jones said "I've been connected with Woodies for 15 years and absolutely love the place. We are very pleased to have won for the second consecutive time. We've increased our beer range over the last year and feature many different microbreweries beers now."

Woodies' third annual Beer Festival runs from 7.30 on Friday 17 August to Sunday 19 August 2007. Admission is free, with 40 real ales, live music, barbecue, sports and entertainment for all ages.

Second time round for the Red Lion

The South East London branch of the Campaign for Real Ale is pleased to announce that its 2007 Pub of the Year is the Red Lion, North Road, Bromley. "It was 1997 when Chris and Siobhan first won the coveted award; since then the traditional community local has gone from strength to strength" said Branch Chair Andrew McGuinness. "Even in this hard time for the trade, when the area is losing so many pubs to the property developers, it goes to show that a well run public house is still a viable proposition". Congratulations to all staff on an excellent achievement.



The Bricklayer's Arms licensee Becky Newman and son, Luke, with Branch Chairman, Martin Butler and Wandsworth Mayor, Cllr Jim Maddan at the South West London award presentation on 30 April.

The FOX

- ◆ Ever changing guest beers - recently Archers Golden, Hopback Summer Lightning & Odyssey
- ◆ Food served daily Mon to Fri 12 - 3pm
Sats 12.30 - 9.30pm
Mon to Thurs evenings 6 - 9pm,
Fri evenings 6 - 9.30pm. Sunday roast
- ◆ Contained Pub Garden
- ◆ Quiz Night Thursdays

DON'T FORGET SATURDAY 16th JUNE
Visit our tent at the Hanwell
Carnival & Fair and remember
The Fox is only five minutes away

A genuine traditional family pub situated in a quiet side road, yet just 100 yards from the Grand Union Canal and Hanwell flight of locks. Idyllic cycle and rambling routes. Timothy Taylor's Landlord always alongside Black Sheep Best Bitter and London Pride.

10 minutes from Hanwell BR station.
Tube - Boston Manor.

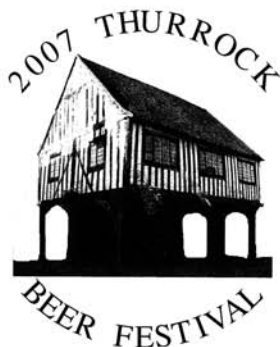


Green Lane, Old Hanwell, London W7 Tel: 020 8567 3912
Open 11am - 11pm Monday - Saturday, 12am - 10.30pm Sunday



BEER FESTIVAL

CAMRA PRESENTS



at The THURROCK CIVIC HALL, Blackshots Lane, Grays
on

TUESDAY, 5th JUNE - SATURDAY, 9th JUNE
TUESDAY - FRIDAY, 12 - 3 p.m. and 6 - 11 p.m.
SATURDAY, OPEN ALL DAY! 12 Noon - 11 p.m.

**A LARGE SELECTION OF SUPERB REAL ALES,
CIDER, PERRY & COUNTRY WINE**

TUESDAY to FRIDAY LUNCH TIME ADMISSION FREE

EVENING ADMISSION TUES & WEDS - FREE, £2.00 THURS*

£4.00 FRIDAY* £1.00 SAT* BEFORE 6.00 P.M., £2.00 SAT* AFTER 6.00 P.M.

***INCLUDES LIVE ENTERTAINMENT**

CAMRA MEMBERS FREE AT ALL TIMES

WE REGRET UNDER 18s MUST LEAVE THE PREMISES BY 6 p.m.

NO SMOKING AT THE BAR

THURS.	THE CELEBRATED ONION BAND
FRI.	UNDERCOVER
SAT.	RUMFORD MORRIS MEN & THE MOST
SAT EVE.	CAPTAIN MORGANS RUM DO

OUTDOOR DRINKING AREA AVAILABLE

Website: www.swessex.clara.net

15th CATFORD BEER FESTIVAL

6th- 9th June 2007



Broadway Theatre,
Catford SE6 4RU
www.broadwaytheatre.org.uk



70 Real Ales, Cider & Perry, Foreign Beers, Country Wines

Live Entertainment

*Large quiet bar
available at all times*

*No Smoking Venue
Smokers will be accommodated*

*Opening Times:
Wed 6th: 5pm - 11pm
Thurs 7th - Sat 9th: Noon - 11pm*

*Family Room
Fri / Sat noon - 6pm*

*Admission:
Wed - £1.50
Thurs - £1.50 until 5pm, then £2.50
Fri - £1.50 until 5pm, then £3.50
CAMRA Members:
£1.00 off Wed - Fri
Sat - Free
R.O.A.R.*

*Organised by South East London Campaign for Real Ale
For more details www.selcamra.org.uk*

So don't be late!

Bexley's second Beer Festival

On a warm Saturday afternoon in April after watching Sidcup defeat Eltham at rugby you could relax, sit on the grass and while scoffing a baguette and quaffing a pint, watch a game of cricket or indeed tennis. Such was the scene of Bexley's second beer festival.

Once again at Sidcup Sports Club, Sydney Road, from Thursday evening through to Saturday evening, 913 customers appeared and drank all 29 gallons of cider/perry and almost all of the 65 firkins of beer. The first cask to run out was Archers Bouncing Bunnies, (donated by the Portrait pub in Sidcup, thanks Tom) of which luckily we had a second firkin. This was closely followed by Westerham's (our glass sponsors, thanks Robert) William Wilberforce Freedom Ale. The third and fifth were from our local Kent brewer Millis with Dartford Wobbler and Gravesend Guzzler. Fourth was Strathaven Claverhouse Red Ale and sixth Wooden Hand's Cornish Buccaneer.

The festival had six Milds, four Porters and four Stouts, although London Porter from Meantime was replaced by their 7.5% IPA.

We would like to thank Ian Anderson (treasurer) and Jeanie Lovell (bar manager) and her staff for allowing us to use their premises and for all their help and advice they gave us, Wetherspoon's, in the shape of Stuart Birch at the Wrong 'Un, for sponsorship of the staff T-shirts, the Robin Hood and Little John, our Pub of the Year for the eighth consecutive time, for donating four firkins of beer. (thanks Ray, Tony and Caterina and well done). Thanks also to all who attended and those that worked, without you... well you know the rest.

Finally a special thank you to F.C.Pipework, in the guise of the extended French family, for supplying both transport and a special beer, the latter being brewed by John Millis, entitled 'Boakeseys Trout' and given as a thank you in recognition of all the thought and hard work that is put into organising and running a beer festival. All those in Bexley that were involved salute you!!

If you didn't come this year then we hope to see you next year, sometime in April.

Peter Trout

Letters and articles for publication in London Drinker may now be submitted online at www.londondrinker.org.uk

Strike Gold this Summer!

...A wonderful golden, flavourful ale with a refreshing, hoppy bite and delicate citrus aroma.

Twickenham Fine Ales
Summer Gold
ABV 4.1%
Inspired by Tradition

Twickenham Fine Ales
Tel: 020 8241 1825
www.twickenham-fine-ales.co.uk

THE ROYAL OAK

44 TABARD STREET, LONDON SE1
Tel - 020 7357 7173

Traditional Harvey's Sussex Ales
Served in a Traditional Atmosphere

Open Mon-Fri 11am - 11pm

Food Available
Lunchtime & Evenings

And now open Saturdays 6pm - 11pm
also Sundays 12 midday - 6pm
with traditional Sunday lunches

Nearest tube - The Borough

Kingston & Leatherhead Branch of the Campaign for Real Ale presents:



29th and 30th June 2007

Join us to celebrate motor racing history in the branch area, including the centenary of the opening of the Brooklands race track*

Surrey County Staff Club, Penrhyn Road, Kingston, KT1 2DN
(next to County Hall and near Crown Court)

(buses 71, 281, 406, 418, 465, 514, 515, K2 and K3 pass the door)

Open 11am to 3pm and 5.30pm to 11pm Friday,
11am to 9pm Saturday

- More than 45 real ales plus a range of cider and perry
- Food available all sessions (including hot food Fri Eve and Sat)
- Lounge seating (not Fri lunch) and outdoor drinking area

Admission:

FREE Fri lunchtime, £2 Fri evening, £1.50 Sat

£1 Fri evening, FREE at other times to CAMRA members (cards must be shown on door)

***Remember that alcohol and driving don't mix. Please come by public transport or nominate a non-drinking driver.**
Soft drinks will be available from the club bar.

Evening crawl of Hampstead

The evening of Wednesday 18 April saw the London Pubs Group visit pubs of interior architectural interest in the Hampstead area. Twenty-five members in all took part in the tour, with most making it by 7.30 to the official starting point, the **Horseshoe** at 28 Heath Street. This pub was chosen for its convenient location near to the Underground station but has had a varied history. Formerly the Three Horseshoes and a rather jaded Grand-Met Truman pub, it was acquired by Wetherspoon in 1992 and seemed to enjoy a number of successful years in that role. Alas, it appears the latter company are only interested in 'mega' ex-bank or cinema conversions nowadays and it joined the many north London pubs they disposed of in 2003.

For a while afterwards it continued in a sort of 'Wetherspoon-lite' mode under London & Edinburgh control before receiving a thorough makeover to emerge in its latest incarnation, the independently owned Horseshoe (singular) in 2006. The emphasis is very much on food, with a large open plan stainless steel kitchen prominent in the bar, but real ale is not forgotten, as the pub brews on the premises. The clientele seems to be a mix of young trendies and suits and a complete change from the former Wetherspoon's crowd. The service appeared a little brusque, at least in the writer's experience, and I was left wondering if the owners would really prefer to be a restaurant selling beer as opposed to a pub offering food. On the plus side there is usually at least home-brewed bitter available, plus guests from breweries such as Adnams and Sharps.

A short walk along Holly Mount took us to the **Holly Bush**, one of Hampstead's most famous pubs. This is both Grade II listed and on the London Regional Inventory (LRI), and deservedly so. With an exterior finished in painted stucco, parts of the building date back to c.1797. Despite the inevitable alterations over time, and even in recent years, the

Victorian bar-back and counter survive as do some elements of screen-work and etched glass. The predominately dark colours used for interior decoration and low lighting level help evoke an 'Olde World' atmosphere, as do the various separate drinking areas which still remain, some rather newer than others given the progressive expansion to the rear. Of particular note is the so-called 'coffee room' on the left with its fixed bench seating. The exterior livery still bears allegiance to Benskins' Brewery but the actual beers available were Adnams Bitter and Broadside, Fuller's London Pride and Harvey's Sussex Bitter.

Just prior to our departure, the staff presented our table with some free nibbles. Whether this is normal practice or an attempt to make us linger was unclear, and in the event unsuccessful, as we had to move on to the Flask. Traversing the picturesque stairs leading to Heath Street, the route took us past the remains of two former Hampstead pubs. The erstwhile McMullen's Nag's Head at number 79 had once been the Cruel Sea theme pub and was also the subject of the ill-fated CAMRA Investments pub-owning experiment. Almost opposite at number 68 was a more recent casualty, the Horse & Groom. This was Hampstead's 'other' Young's pub, but always seemed to live in the shadow of its more illustrious neighbour. It has now closed and been converted to a restaurant but, despite this, the old name sign on the upper storey is still on display.

The **Flask** stands, appropriately, in Flask Walk and, like the Holly Bush, is Grade II and LRI-listed.



Interior of the Holly Bush.



One of the Jan Van Beers paintings in the Flask.

The pub was rebuilt in 1874 and what makes it special today is the full-height timber and glass screen that divides the front two bars. On the saloon bar side are five delightfully sentimental paintings, perhaps added later, and signed by Jan Van Beers. A bit of research has since revealed the following: *"At the Brussels Salon of 1881, a scandal broke out over two entries by Jan Van Beers (1852-1927), a promising Belgian artist who had been living and working in Paris for some time. The scandal centred on the accusation made by three art critics that Van Beers's canvases were mere overpainted photographs or had at least, in some way or another, been made with the help of photographic means"*. The paintings in the Flask certainly have a photographic quality about them.



The Flask public bar.

A surviving etched window reveals that there was once a small private bar on the left, which has been subsequently joined to the public bar. Other features still in situ include mahogany and glass partitions, bar fittings and counter; cast-iron fireplaces with tiled surrounds and moulded cornices. When the rear of the premises was extended in 1990 to provide a conservatory dining area, a brick vaulted cellar was discovered. Evidence of the Wells-Young's link-up was the presence of Charles Wells' Bombardier in addition to the usual Young's 'Ordinary' and Special.

Leaving the pub we turned right into New End Square and then along Willow Road. This next leg of the crawl was the longest distance between pubs. En-route participants were invited to observe numbers 1, 2 & 3 Willow Road, designed in 1938 by the noted modernist architect Erno Goldfinger and now owned by the National Trust. We also glimpsed the Freemasons' Arms in Downshire Hill which has

a London Skittles alley. When Charrington's were planning to rebuild the pub in the 1930s, the locals sent a petition of protest to Hampstead Council. This included the signatories' occupations, but instead of the usual upper middle-class professions found in other areas of the capital, this list was crowded by those describing themselves as painters, sculptors, playwrights, lino-cutters, poets and lithographers etc!

Just off the junction of South End Road at 2a South Hill Park is the **Magdala**, named after the 1868 battle of the same name. This involved British and Ethiopian forces, with Sir Charles Napier commanding the British and the Ethiopians under Emperor Tewodros II. The British won the battle, after which Tewodros committed suicide. Previously, the moderniser Tewodros had realised the importance of powerful weapons and asked Britain for assistance in making cannons. When this was refused, he kidnapped a group of 60 European diplomats and missionaries and instructed them to build a cannon for him, prompting Britain to mount an expedition to Ethiopia using British and Indian troops. Napier was subsequently created 1st Baron Napier of Magdala and was also remembered in the Lord Napier in Goodmayes and Napier Arms in Woodford.

Although the fabric of the Magdala is mid-Victorian, it later underwent a thorough mid-30s modernisation including buff ground floor exterior tiling and attractive green and clear glass leaded windows. These are absolutely typical of former



The Magdala.

Charrington's pubs and can be found all over the capital, albeit in steadily declining numbers. In some cases, horizontal sections carried the brewery's name or other lettering, whilst oval-shaped pieces of glass often bore the company's trademark toby jug symbol. Some of these decorated panes in pubs appear to have been replaced by plain glass under Bass Charrington's ownership, perhaps during 'modernisation'.

London Pubs Group

Certainly many others have gone since; though it may be possible that others were never lettered in the first place and were blank from new (for the record, the Cooper's Arms in Kilburn High Road still has an exceptional set of such lettered glass).

Most of the pub now has a dull modern look, but on the right is a pleasant and remarkably intact room from the 1930s. Walls are elegantly wood-panelled to half height, above which is low-key Art Deco frieze. The counter is panelled in the style of the walls and the picture is completed by a Tudor-style pink marble fireplace. Beerwise, the Magdala was offering Greene King IPA and Fuller's London Pride.

Of course the Magdala's main claim to fame nowadays is for being where Ruth Ellis shot her abusive lover, David Blakely, on Easter Sunday 1955. For many years it was claimed that bullet holes were still visible on the exterior tiling but other sources have since suggested that these were actually 'improved' or even created by a former landlord keen to cash in on the notoriety. The present owners acknowledge the event in a restrained way in the form of a framed newspaper cutting.

From the Magdala it was a short walk past Hampstead Heath station to our penultimate port-of-call, the **Garden Gate** at 14 South End Road. This classic example of Brewers' Tudor was appropriately named the Railway Tavern until 1999

and was described in the first edition of the North London Beer Guide as having a "typical and unspoilt Charrington interior with leaded glass windows and wood panelling". Sadly only a fraction of this is still extant. That which does remain includes some good wooden panelling in one area, original wooden parquet flooring, two door lobbies and fragments of the former coloured window glass. On handpump were Greene King ('Morland's') Old Speckled Hen (which ran out during our arrival!), Greene King IPA and the seemingly ubiquitous London Pride.

After leaving the Garden Gate, South End Road and Fleet Road took us to the apex of Constantine and Fleet Roads and the **White Horse**. Rebuilt in 1904, this has some impressive ironwork, two door lobbies, a carved mirrored wooden island bar-back



Interior detail in the White Horse.

with built-in clock and extravagant iron lampholders. But what really sets this place apart is the striking geometric and floral patterned enamelled sectioned ceiling, which must be unique. A small amount of stained, cut and etched glass also survives and, as always, gave us a glimpse of what must have been lost. Although the White Horse was once owned by Grand Met-Watney, today's real ales usually consist of Courage Best and Charles Wells' Bombardier. This was the last pub on our itinerary and proved a worthy conclusion to another successful LPG tour. Next time, why not join us?

Kim Rennie

HOOPERS

28 Ivanhoe Road, London, SE5 8DH
Tel: 020 7733 4797
www.hoopersbar.co.uk

A traditional pub, off the beaten path!

Come in for a pint of Harvey's or one of our regular micro-brewed guest ales.

We have a great bottled beer selection too!

**Open from 5:30-11:00pm Mon-Fri
Sat/Sun 2:00-11:00pm**

HOOPERS BAR & CAFE
28 Ivanhoe Road
London SE5 8DH
020 7733 4797
www.hoopersbar.co.uk

'Acting Up' by John Young

Born in Winchester in 1921, John Young came from a well-to-do family who also had useful connections for his later life. From an early age, his parents encouraged him in one of his lifetime interests, sailing and generally messing about in boats. He was once stranded overnight with his brother, James and his family never came looking for them but trusted them to return safely. His schooling at various prep and private schools was very mixed and he left with few qualifications but later went on to Cambridge, gaining a 2nd Class degree in two years, interrupted by six years' war service.

Serving with the Fleet Air Arm during the War, he fought with distinction in Europe and the Far East and, at 24, became the youngest Lieutenant Commander in the Navy. He flew twenty five different types of aircraft, from 42 airfields, and landed on six carriers. After he had finished at Cambridge, his father forbade him from having anything to do with the brewery. He had some acting ambitions and recalls being smitten with both Vivienne Leigh and Elizabeth Taylor, whom he met in the Coach & Horses at Kew.

However, his father persuaded him to join a shipping firm, and he was accepted by Runciman's, a company reputedly so mean that no seagulls would

ever follow their ships. Whilst working for them he met his wife, Yvonne, a French-speaking Belgian from Liège. But then he was summoned to the brewery as most of the existing family wanted to retire. He found himself as Managing Director, with his father staying on as Chairman until 1962.

He immediately set about sorting out the brewery, especially the stables, but was advised that the business was about pubs and the people who run them. So he embarked on a six month pub crawl, always having a bottle of Worthington White Shield for breakfast before setting out in his famous London cab for a pint in each pub he visited.

When keg beer arrived, he described it as 'boring' and decided that Young's beer was a great heritage that they should keep and promote. Everyone else thought he was mad and that the brewery would be bust in five years but, with the advent of CAMRA, sales suddenly took off and at one stage they had to ration their beer!

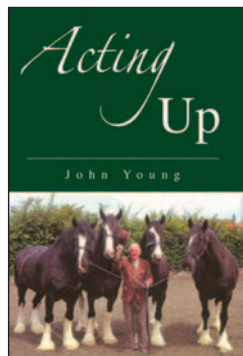
From later years, John Young recalls fondly his work for the then National Hospital for Nervous Diseases, for which he received a CBE, his battles to save the Shire Horse and the Queen's visit to the brewery in 1981. He was always ready to tell a story against himself and his book is crammed with very funny stories involving the famous people he met and, more tellingly, the brewery workers whose characters he brings to life. In a chapter about his mistakes and gaffes he recounts how his trousers had a habit of falling down at the wrong moments, various run-ins with Prince Philip and the time he appeared on 'Top of the Pops' by mistake.

John Young was truly a larger than life character. He saved the brewery and loved to promote its beer. I had the privilege to meet him and drink with him on a few occasions and he was great company. He is sadly missed by a huge number of people, as witnessed at his memorial service at Southwark Cathedral. He died only weeks after completing his memoir.

Do buy a copy of this marvellous book which kept me spellbound from beginning to end.

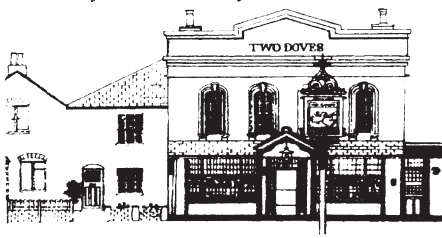
Chris Cobbold

Acting Up, My Life and Times by John Young, CBE, ISBN 1 84104 167 X, is published by The Memoir Club, priced £19.95.



TWO DOVES

37 Oakley Road, Bromley Tel 020 8462 1627



A warm welcome awaits you in the relaxed surroundings of this friendly pub

Young's selection of Real Ales
Young's Award Winning Garden

CAMRA Good Beer Guide listed
Friendly Clientele • Light Snacks

Bus 320 from Bromley North and Bromley South
railway stations stops outside

Hours: Lunchtime: Mon-Thu 12noon-3pm

Evenings: Mon 5-11pm, Tues-Thurs 5.30-11pm

Fri & Sat 12noon-11.30pm; Sun 12noon-11pm

Dear Editor

Britain has a binge drinking culture, as the media never tire of reminding us. For many people, getting smashed on a Friday and Saturday night is what weekends are all about. It's a desperately sad existence for those that partake in the weekly ritual, and it's a terrible burden on those who have to pick up the pieces. If the Government can act to discourage such behaviour, they should do so. I doubt there are many readers of the *London Drinker* who wouldn't agree with that. So why are we being hit in the wallet by yet another rise in beer duty? This year's budget introduced a 1p rise on beer, while freezing the levy on spirits for the tenth year running. Tax on beer in this country is almost three times that charged in Denmark, the next highest on the list. What kind of message does this send out?

I'm 28, so it wasn't very long ago that I was a teenager myself. In my home town there was binge drinking scene, and as a young lad I went along with it. I'm not proud of it now, but it does give me a standpoint of knowledge. Was it traditional cask ale that got people in a fighting mood? No, it was poor quality premium strength lager washed down with shots of spirits. Real ale doesn't offer the dubious rewards of fast intoxication, and it isn't served in the places that deliver drunken young people into the hands of our police and ambulance services at 11pm on a Friday night.

Other countries in this world play to their strengths, and their governments take every opportunity to promote what their people have given to the world. One of our strengths lies in our beer. Our pale ales, bitter, porters, milds and stouts have been replicated throughout the world, but rarely surpassed. You can track the course of our rich history in the development of our beer culture. Our traditional pubs are the very best in the world. Like anything else that needs to be carefully crafted and handled, real ale is a civilising influence.

Those in the Westminster village seem to have forgotten this. It's our job to remind them, and anyone else who will listen. We all need to do our bit to disassociate real ale from the harmful binge drinking culture that has a grip on our young people. It's got nothing to do with us, and we support efforts to tackle it. Real ale is a national treasure, and those that govern us should be helping it to flourish, not stifling it through over-zealous taxation. CAMRA are in a position to lead the charge and, as a member, I hope they do.

Jeff Bell (aka Stonch of STONCH'S BEER BLOG - beer and pubs: <http://stonch.blogspot.com>)

Dear Editor

Several years ago I wrote an article for *London Drinker* about the pubs of Barking where I then lived. Since then three pubs have been demolished.

The Volunteer, a large road house on the A13, was demolished to facilitate the widening of the road. The Stag, on the south side of the town centre has been replaced by a Lidl supermarket. The third pub was the Fishing Smack, in Abbey Road by the River Roding, which has been replaced by a residential development. The Smack got its name from a type of boat used in the fishing industry which was based in Barking in years gone by.

There was quite a large fishing industry in Barking but it declined in mid Victorian times as the coming of the railways made it easier to land the fish on the East Coast and bring it to London by rail. Some of the Barking fleets relocated to the East Coast and there is a pub in Great Yarmouth called the Barking Smack which, according to Internet searches, serves real ale.

Some of the other pubs in Barking have names connected with the fishing industry: Jolly Fisherman, Lighterman, Barge Aground and the Short Blue, which takes its name from one of the old fishing fleets.

Another pub in Barking, the Westbury Arms, is closed and boarded up but has not been demolished yet.

Colin Price

Dear Editor

The last Capital Pubcheck in London Drinker said that the Plough in Ilford was now a Redeemed Christian Church of God. This is not strictly correct. The pub is still there and no work has been done on it. As far as I am aware, the plan is that it will be demolished and a Health Centre will be built on the site, but nothing has happened yet.

While the building is still there the rooms are available for hire and have been used by the Redeemed Christian Church of God for services but they are not using it on a permanent basis. Still, "Wherever two or three are gathered in my name".

Colin Price

Dear Editor

To follow up Robin Forshaw-Wilson's letter about Fairport Convention in the last *London Drinker*, Fairport fans may like to know there is a biography of the group's late singer, Sandy Denny, by Clinton Heylin called *No More Sad Refrains*.

Colin Price

SPREADING THE MESSAGE

Thanks to the generous support of Wetherspoons, the circulation of *London Drinker* has now increased to 28,000 copies.



Young's Bitter

Decades of
brewing expertise
have gone into
making Young's Bitter
a favourite of those
who value great cask ale.
Available on discerning bars
across the capital -
you'll find the great pint
you've always
enjoyed



Branch diaries

Welcome to our regular details of London CAMRA contacts and events. This is where branches can say what is happening in their areas that might be of interest to drinkers across London. Events for June and July are listed below.

Branch meetings and socials are open to all - everyone is welcome to come along.

LONDON REGIONAL EVENT

July - Wed 25 (8pm) London Liaison Committee (Regional co-ordination meeting for London Branches). Royal Oak, Tabard St, SE1. Secretary: geoff@coherent-tech.co.uk

LONDON PUBS GROUP

Jane Jephcote 020-7720 6327, jephcotej@hotmail.co.uk

June - Sat 16 Daytime crawl of South East London: (11.30am) Blythe Hill Tavern, 319 Stanstead Rd, SE23; (12.30pm) Capitol, 11-21 London Rd, SE23; (1.30) Forest Hill Tavern, 108 Forest Hill Rd, SE22; (2.45) Herne Tavern, 2 Forest Hill Rd, SE22; (3.45) Ivy House (formerly Stuart Arms), 40 Stuart Rd, SE15; (4.30) Man of Kent, 2 Nunhead Green, SE15; (5.15) Gowlett, 62 Gowlett Rd, SE15; (6.15) Hoopers (formerly Ivanhoe), 28 Ivanhoe Rd, SE5; (7.15) Joiners' Arms, 35 Denmark Hill, SE5. Public transport will be required at times.

July - Wed 11 (7.15 for 7.30) Mtg. Royal Oak, Tabard St, SE1 (upstairs). All branches and members interested in pub research and preservation welcome.

Website www.londonpubsgroup.co.uk

BEXLEY

Martyn Nicholls 01322 527857 (H), contacts@camrabexleybranch.org.uk

June - Wed 13 (8.30) Mtg. Prince of Wales, Upper Belvedere. - **Sat 23 (11.30am)** Branch AGM. Old Wick, Bexley.

July - Wed 11 (8.30) Mtg. White Cross, Bexley.

Website: www.camrabexleybranch.org.uk

CROYDON & SUTTON

Michael Fairweather 07905 611978, 0203 039 0379 (H)

June - Mon 4 (8.30) Social and Pub of the Year presentation (Sutton area). Race Horse, 17 West St, Carshalton. - **Tue 12 (8.30)** Social and Pub of the Year presentation (Croydon area). Cricketers, 47 Shirley Rd, Addiscombe. - **Tue 26 (8.30)** Mtg. Dog and Bull (upstairs room) 24-25 Surrey St, Croydon.

July - Tue 3 Beer of the Festival presentation (2006) at Fuller's/Gales (to be confirmed, limited availability). Contact social secretary for further details. - **Tue 10 (8.30)** Social. Good Companions, Limsfield Rd, Hamsey Green, Surrey (to be confirmed). - **Thu 26 (8.30)** Mtg. Robin Hood, 52 West St, Sutton.

Website: www.croydoncamra.org.uk

EAST LONDON & CITY

John Pardoe 07757 772564, elacbranch@yahoo.co.uk

June - Sat 2 (1pm) Beer Festival mtg. North Woolwich railway museum. - **Sat 9** Visit to Swan Beer Festival, Little Totham. Travel by train to Witham and then a cab to the Swan: contact branch for details. - **Tue 12 (8pm)** Branch and Pig's Ear festival mtg. Birkbeck Tavern, E11. - **Thu 14 (8pm)** Pub of the Year presentation. Palm Tree, Haverhill Rd, E3. - **Fri 22 (8pm)** EC2 crawl, starting Old Dr Butlers Head, Masons Ave: contact branch for exact location on night.

July - Sat 7 Visit to Ballards Brewery to present Beer of the Festival award: contact branch for details. Special rates for PE festival workers. - **Tue 10** Mtg. Black Lion, Plaistow. - **Fri 20 (8pm)** EC1 crawl, starting Cock & Woolpack, Finch La: contact branch for exact location on night.

Website: www.pigsear.org.uk

ENFIELD & BARNET

Sandie Ward 020-8884 0075 (H), Branch Mobile 07757 710008
June - Wed 6 (8.30) Branch AGM (CAMRA MEMBERS ONLY: BRING MEMBERSHIP CARD), Enfield Town Club, Old Park

Ave, Enfield. - **Tue 12** N20 Two pub garden social: (8.30) Griffin; (9.30) Three Horseshoes. - **Thu 21 (9pm)** Summer Solstice social. Hollybush, 200 Lancaster Rd, Enfield. - **Wed 27 (9pm)** Garden social. Orange Tree, 7 Totteridge Village, Whetstone N20.

July - Tue 3 (8.30) Mtg. Sebright Arms EN5. - **Thu 12 (8.30)** Patio social. Southgate Cricket Club, Waterfall Rd., N14 (BRING MEMBERSHIP CARD); - **Sat 21 (4pm)** BBQ. Orange Tree, Winchmore Hill N21. Tickets must be bought in advance: £5 from contact. - **Thu 26 (9pm)** London Drinker pick up and garden social. Crown & Horseshoes, Enfield. - **Tue 31 (8.30)** Garden social. Railway Bell, New Barnet.

Website: www.camra-enfield-and-barnet.org.uk

KINGSTON & LEATHERHEAD

Clive Taylor 020-8949 2099 (H), 020-8540 1901 (W), clive@paylor2005.wanadoo.co.uk

June - Sat 2 Bus trip to Rare Breeds Beer Festival, Kent. Pick up Surbiton rail station 10.30. Fare £15 approx. Contact Brian Kirton (R&H) 0208.384.7284. **Tue 5 (8.15)** Mtg. Royal George, Hershams Rd, Hershams. - **Wed 6 (7.30)** Social gathering at Catford Beer Festival, see page 23. - **Sun 10** KBF publicity crawl around Surbiton: meet (12.30) Coronation Hall. - **Sat 16** Minibus trip to Three Moles Beer Festival, Selham, W Sussex, also incorporating a micro brewery and some other pubs along the way. Pick up Surbiton rail station 11am, return about 8pm. Fare £15. Deposit £10 to book. **Fri 29/Sat 30** Kingston Beer Festival, see page 25. **July - Wed 4 (8.15)** Mtg. Worcester Park, Worcester Park. - **Sat 7 (12 noon)** Surrey liaison. Garland, Redhill. - **Thu 12** Esher crawl: (8pm) Bear; then Wheatshaf and Albert (8 micro beers). - **Sun 15** Train day out to the Watercress Line at Alton. Travel on 10.30 from Surbiton.

Website: www.camrasurrey.org.uk

NORTH LONDON

Social contact: Steve Ducker 07910 151494, steve.ducker@yahoo.co.uk; Branch contact: John Cryne 020-8452 6965, john.cryne@uk.pwc.com

June - Tue 5 NW8 Social: (7pm) New Inn, 2 Allisten Rd; (8pm) Real Ale & Cricket Guide Launch. Star, St. Johns Wood Terrace (special guest appearance by Guide author Roger Protz). - **Tue 12 (7pm)** Pub of the Year presentation. Calthorpe Arms, 252 Grays Inn Rd, WC1. - **Tue 19** WC1 Social: (8pm) Rugby Tavern, 19 Great James St; Dolphin Tavern, 44 Red Lion St; Queens Larder, 1 Queen Square. - **Tue 26 (8pm)** London Drinker Beer Festival debrief mtg. Wenlock Arms, 26 Wenlock Rd, N1. **July - Tue 3** NW6 Social: (7pm) Golden Egg, 155 Kilburn High Rd; Good Ship, 289 Kilburn High Rd; Black Lion, 274 Kilburn High Rd; North London Tavern, 375 Kilburn High Rd. - **Tue 10** NW5 Social: (8pm) Lord Palmerston, 33 Dartmouth Park Hill; Dartmouth Arms, 35 York Rise. - **Tue 17 (8pm)** Branch AGM. Calthorpe Arms, 252 Grays Inn Rd, WC1. - **Tue 24** NW3 Social: (8pm) Ye Olde White Bear, Well Rd; Duke of Hamilton, 23-25 New End; Holly Bush, 22 Holly Mount. - **Tue 31** N16 Social: (8pm) Rochester Castle, 145 Stoke Newington High St; Prince, 59 Kynaston Rd; Rose & Crown, 199 Stoke Newington Church St. Website: www.camranorthlondon.org.uk

RICHMOND & HOUNSLOW

Brian Kirton 020-8384 7284 (H), sk014j4253@blueyonder.co.uk

June - Sat 2 (10am) Vintage coach trip to Woodchurch beer festival at rare breeds centre. - **Thu 14 (8pm)** Mtg. O'Briens, 11 London Rd, Brentford. - **Sat 16 (1pm)** Joint social with Staines ramblers starting at Hole in the Wall, 5 Mephram St, Waterloo. - **Sat 23 (10am)** Beer festival workers' outing: details to follow. - **Sat 30 (12noon)** Social at Kingston beer festival, see page xx. **July - Tue 12 (8.30)** Mtg. Britannia, 5 Brewer's La, Richmond. - **Sat 14 (10am)** Trip to Thornbridge brewery: details to follow. - **Thu 24** Ham crawl: (8pm) Ham Brewery Tap, 4 Ham St; (9.30) Royal Oak, Ham St; (9pm) Hand & Flower, Upper Ham Rd; (9.30) New Inn, 345 Petersham Rd; (10.15) Dysart, 135 Petersham Rd.

Website: www.camra.org.uk/richmond

SOUTH EAST LONDON

Roz Cox 07796 272 730 or 020-8697 6939 *evening or weekends only*, roz@selcamra.org.uk

June – Mon 4 and Tue 5 (9am-6pm) Set up for Catford Beer Festival. - **Wed 6 - Sat 9** Catford Beer Festival, see page 23. Volunteers needed for all sessions, contact Roz as above or check website for staffing form. - **Wed 20** (8pm) New Members' Social. SEL Pub of the Year, Red Lion, 10 North Rd, Bromley. - **Mon 25** (8pm) Social. Roses (Prince Albert), 49 Hare St, Woolwich SE18. - **Sat 30** (12 noon onwards) Social. Old Mill Beer Festival, 1 Old Mill Rd, Plumstead SE18. This is also continuing on Sunday 1st if you have the stamina.

July – Tue 3 Social. Capitol, 11-21 London Rd, SE23. Behind the scenes inc old circle and rooftop tour, small fee payable, also possibility of ordering any favourite beers to be available that night. - **Tue 10** (8pm) Catford Beer Festival Post Mortem. Old Nun's Head, 15 Nunhead Green, SE15. - **Mon 16** SE3 Blackheath Crawl: (8pm) Railway, 16 Blackheath Village; Crown, 49 Tranquil Vale; Hare & Billet, Hare And Billet Rd; Princess of Wales, 1a Montpelier Row; finishing at Zero Degrees, Montpelier Vale, Blackheath Village. - **Sat 21** (from 1pm) Social. Old Jail, Jail La, Biggin Hill, Kent. R2 bus from Orpington stops outside.

Website: www.selcamra.org.uk

SOUTH WEST ESSEX

Andrew Clifton 01708 765150 (H), swessex@clara.co.uk

June – Tue 5-Sat 9 Thurrock Beer Festival, Thurrock Civic Hall, Blackshots Lane, Grays, see page 22 (for more details see www.swessex.clara.net/page6.html) - **Tue 14** (8pm) Social. Braintree Beer Festival, Braintree Institute, Bocking End, Braintree (for more details see festival's website www.braintreebeerfestival.co.uk) - **Wed 20** (8pm) Tigers Island Beer Festival Social. White Hart, Swan La, Margaretting Tye CM4 (OS: TL684011). Transport from Chadwell Heath, Romford, Upminster and Thurrock: contact Graham Platt on 020-8220 0215 (for more details, see www.the-whitehart.co.uk). - **Fri 22** (7pm at Brewery) Trip to Pitfields Low Organic Brewery, London Rd, Great Horkesley CO6. Transport from Chadwell Heath, Romford, Upminster and Thurrock: contact Graham Platt on 020-8220 0215. - **Sat 23** (5pm) Beer Festival Social. Theobald Arms, 141 Argent St/King's Walk, Grays. - **Thu 28** Wanstead Good Beer Guide crawl: (8pm) George, High St; then Nightingale, 51 Nightingale La and Duke of Edinburgh, 79 Nightingale La.

July – Thu 5 (8.30) Social. White Lion, Lion Hill (B1420), Fobbing. - **Tue 10** (8pm) Social. Chelmsford Beer Festival, Moulsham Mill, nr. Army and Navy Roundabout, Chelmsford (for more details see festival's website www.chelmsfordcamra.org.uk/festival/index.html). - **Thu 12** (8pm) Beer Festival Social. White Horse, 173 Coxtie Green Rd, Coxtie Green. - **Thu 19** (8.30) Social. Cricketers, 299-301 High Rd (A11), Woodford Green. - **Sat 21** (12noon at Brewery) Trip to Pledgon Brewery, Unit 2, Pledgon Hall Farm, Henham, Bishops Stortford CM22. Transport from Chadwell Heath, Romford, Upminster and Thurrock: contact Graham Platt on 020-8220 0215. - **Mon 23** (8.30) Social (& Mtg to approve AGM Minutes). Crooked Billet, 113 River Rd, Creekmouth, Barking. - **Thu 26** (8.30) Branch Essex Pub of the Year presentation. White Hart, 168 High St/Kings Walk, Grays.

Website: www.swessex.clara.net

SOUTH WEST LONDON

Mark Bravery 020-8540 9183 (H), 020-7147 2860 (W), markbravery@blueyonder.co.uk; Cricket: Tom Brain 07796 265972, thomas.brain@horuath.co.uk. New players always welcome for friendly Sunday afternoon matches.

June – Mon 4 Streatham crawl: (6.30) Moon under Water, 1327 London Rd, Norbury; (7.15) Pied Bull, 498 Streatham High Rd; (8.15) Railway Hotel, 2 Greyhound La; (9.15) Holland Tringham, 107 High Rd; (10.15) Five Bells, 68 High Rd. - **Tue 19** (7.30) Mtg. Railway (upstairs bar), 202 Upper Richmond Rd, Putney SW15 (opp Putney station).

July – Sat 14 GBBF publicity crawl. (12.15) Green Man, Putney

Heath SW15. Late joining point (3pm) Fox & Grapes, Camp Rd, Wimbledon Common SW19. - **Mon 23** (7.30) Mtg. Beehive, 197 St John's Hill, Battersea SW11. - **Sat 28** Battersea award trip to Bazen's Brewery, Salford. Contact philip.blanchard@aerionfm.com for details.

Website: www.swlcamra.org.uk

WATFORD & DISTRICT

Andrew Vaughan 01923 230104 (H) 07854 988152 (M)

June – Sat 9 (from 9am) Morning social. Rose & Crown, Woodcock Hill, Rickmansworth (Farmers' Market). - **Wed 20** Watford Town Centre social: (8.30) Druids 2; (9pm) Estcourt Tavern; (9.45) Wellington Arms; (10.15) Estcourt Arms. - **Mon 25** (8.15) Mtg, Estcourt Arms ('Lynch's'). - **Sat 30** Sarratt stumble: (12.30) Plough, Belsize; (1.15) Cart & Horses, Commonwood; (2pm) Boot, Sarratt. (Catch 352 bus from Watford Town Centre, 12 noon.)

July – Thu 12 (8pm prompt) Branch Darts Tournament. West Herts Sports Club. All members welcome to take part. - **Tue 24** (8.30) Out of area social. Black Boy, Old Watford Rd, Bricket Wood.

Website: www.watfordcamra.org.uk

WEST LONDON

Alasdair Boyd (Social secretary) 020-7930 9871 ext 143 (2.30-3.15/6pm-9.30 Mon-Fri), banqueting@nlc.org Fax 020-7839 4768. Branch contact Kim Martin 07717 795284,

kimberlymartin@yahoo.com westlondoncamrabranch@hotmail.co.uk

June – Thu 7 (7pm, Cider Bar) Social at Catford Beer Festival, see page 23. - **Tue 12** (7 for 7.30, upstairs room) Mtg. Carpenter's Arms 12 Seymour Pl, W1. - **Thu 21** (7.30) Out of Branch social. Oakdale Arms Beer Festival, 283 Heritage Rd N4. - **Tue 26** SW6 social (7.30) Durrell, 704 Fulham Rd; (8.30) Chancery Bar & Kitchen, 314 Lillie Rd.

July – Wed 4 West Brompton beer scoring and GBBF publicity tour: (7pm) Chelsea Ram, 32 Burnaby St, SW10; full details on website. - **Tue 10** Mtg. (7.30, upstairs room) Duke of York, 47 Rathbone St, W1. - **Tue 17** SW6 beer scoring and GBBF publicity tour: (7pm) White Horse, 1 Parsons Green; full details on website. - **Sat 28** SW1 beer scoring and GBBF publicity tour: (11am) Lord Moon of the Mall, 16-18 Whitehall; full details on website. - **Tue 31** W6 Hammersmith beer scoring and GBBF publicity tour: (7pm) Hammersmith Ram, 81 King St; full details on website.

Website: www.westlondon-camra.org.uk

WEST MIDDLESEX

David Bender 07734 509111, contact@westmiddx-camra.org.uk

June – Thu 14 (8pm) Mtg; (8.30) Branch AGM. Southall Conservative Club, Fairlawn, High St, Southall.

July – Wed 11 (8.30) Mtg. Greystoke, Queens Drive, North Ealing W5.

Website: www.westmiddx-camra.org.uk

Electronic copy deadline for the August/September edition: 11th July 2007. Please send entries to geoff@coherent-tech.co.uk.

Lesbian and Gay Real Ale Drinkers events

A group of lesbian and gay members of the Campaign for Real Ale organising to extend the Campaign to the lesbian and gay community. All welcome to all events. Or visit our website at <http://www.lagrad.org.uk>. The group convenor can be contacted on info@lagrad.org.uk.

The Greater London Group meets at 7pm on the second Monday of every month alternating between a 'branch' meeting in the basement of the Half Way, 7 Duncannon Street, WC2, 020-7930 8312 (even numbered months – Feb, April...) and a new members' social upstairs at Compton's, Old Compton Street (odd numbered months – Jan, Mar...) with London Pride and Greene King IPA at £1.50 a pint (on sale downstairs) – happy hour all evening. There are also other events elsewhere in Greater London between these meetings – see website for others' suggestions, or make your own!

Capital Pubcheck - update 195

The aim of 'Capital Pubcheck' is to share information about the latest happenings on the London pub scene including new pub and bar openings, name changes, acquisitions, closures, notable changes to beer ranges etc.

Information is gathered from a variety of sources including London Drinker readers, individual CAMRA members and branch contacts, breweries, pub operators, landlords etc. If you would like to contribute to 'Pubcheck' please send your news to the address below.

This time we welcome a new brewpub in SW6 Fulham, the first of a possible chain operated as a joint venture by David Bruce's Capital Pub Co, a sort of 'Son of Firkin'. A genuine real ale free house owned and run by CAMRA Member Jamie Hooper has opened in SE5 Denmark Hill and a successful beer festival has already taken place. Local action continues across London aimed at saving various pubs under threat of demolition or conversion to other uses such as flats and restaurants, particularly following sell-offs by the big pubcos, Punch (Spirit) and M&B.

NEW & REOPENED PUBS & PUBS CONVERTED TO REAL ALE

CENTRAL

WC2, POLAR BEAR, 30 Lisle St. Reopened and renamed KU. No real ale. Former M&B pub now an independently owned Free House/gay bar in contemporary style. (W37, U191)

EAST

E16, DURHAM ARMS, 24 Stephenson St. Greene King: IPA. Reinstatement of real ale. (E159, U167, U170, U182)

NORTH

N1, BACKPACKERS, 126 York Way. Renamed CROSS KINGS. Fuller: London Pride. Reopened late in 2006 as a Free House after some years as a music club. Food, live music. Open 12-12 Sun-Thu, 12-2am Fri, 4.30-2am Sat. Note corrected former name. (N38, U181)

ENFIELD WEST (EN2), HOLLYBUSH, 200 Lancaster Rd. Adnams: Bitter or Greene King: IPA; Shepherd Neame: Spitfire. Enterprise, ex-Whitbread pub now run by 'Real Pub' chain. Reinstatement of real ale. (N235, U110)

NORTH WEST

NW1, BUCKS HEAD, 202 Camden High St. Fuller: London Pride. Refurbished. Real ale not always available. Formerly HARVEY FLOORBANGERS for a while. (N162, U107, U109, U138, U159)

SOUTH EAST

SE1, HORSE, 122 Westminster Bridge Rd. Greene King: IPA; Wells: Bombardier. Formerly HORSE & GROOM. Reinstatement of real ale. (SE22, U166)

SE5, BRB THE GROVE, 26 Camberwell Grove. Renamed GROVE. Wells: Bombardier; Young: Bitter, seasonal beer (currently Waggedance). Refurbished by Young's as a 'Pub & Dining' experience. Non-smoking throughout. Food including Sunday lunch. Outside seating. Quiz night, TV, live music (jazz Sun afternoon). Originally GROVE HOUSE TAVERN. Open Sun-Thu 11-11, Fri/Sat 11-12 midnight. (SE58, U166, U193)

Cross references to CAMRA's various pub guides covering Greater London are provided to enable easy updating. The numbers in brackets after each entry refer to the page numbers in the following guides: BM - Balham to Morden Pub Guide; BRP - Barnes to Raynes Park Pub Guide; CE - Camden & Euston Real Ale Guide; E - East London & City Beer Guide, 3rd edition; H - Hertfordshire Guide to Real Ale, 2000 edition; HB - Holborn & Bloomsbury Pub Guide; IS - N1 Islington Real Ale Guide; K - Guide to Kent Pubs, 10th edition; 8K - Real Ale Guide to Kent Pubs, 8th edition; KT - Kingston Pub Guide; N - North London Beer Guide, 3rd edition; SE - South East London Pub Guide, 4th edition; 3SE - South East London Pub Guide, 3rd edition; SW - South West London Pub Guide, 2nd edition; W - West London Pub Guide, 2nd edition; X - Essex Beer Guide, 9th edition.

If you would like to report changes to pubs or beers, please write to: Capital Pubcheck, 2 Sandtoft Road, London SE7 7LR or email: capitalpubcheck@hotmail.com.

SE5, IVANHOE, 28 Ivanhoe Rd. Renamed HOOPERS. Harvey: Sussex Best Bitter; 2 changing guest ales. Former Enterprise pub (ex-Labatts, ex-Courage) opened as a Free House by CAMRA Member Jamie Hooper in March. Being sensitively refurbished in traditional style with wood panelling, polished floor, large windows and mixture of furniture. Display cabinets contain Jamie's eclectic breweriana collection including a Watney Red Barrel dispense! Board games available. British and Belgian bottled beers. Occasional beer festivals. Open Mon-Thu 5.30-11, Fri 4-11, Sat/Sun 2-11. Bus P13 stops nearby. A genuine community pub and a welcome addition to the London real ale scene. (SE58, U102)

SE5, OLD DISPENSARY, 325 Camberwell New Rd. No real ale. Irish bar in former bank opened some time ago and not previously reported.

SE9, TUDOR BARN, The Pleasaunce, Well Hall Rd. Fuller: London Pride. Former council owned restaurant in listed building, now operated as a Free House/pub and restaurant. Food lunchtime. Open 12-11 Sun-Fri, 11-11 Sat.

SE18, DIRECTOR GENERAL, 55 Wellington St. Young: Bitter. Reinstatement of real ale may be short lived since the Government Office for London has chosen not to intervene and the London Mayor has given his approval to the planning application for the new Council civic offices and Tesco development in Woolwich town centre which, in a last minute change, included the site of the locally listed pub. This leaves Greenwich Council free to implement the planning permission it granted itself to demolish the pub. (SE167, U193, U194)

SOUTH WEST

SW2, HOP POLES, 60 Upper Tulse Hill. Courage: Best Bitter; Theakston: XB. Reopened. (SW53, U188)

SW3, PITCHER & PIANO, 316 Kings Rd. Reopened and renamed BABUSHKA. No real ale. (U137, U172)

SW6, DURRELL, 704 Fulham Rd, Adnams: Broadside, Fuller: London Pride; Greene King: IPA. Reinstatement of real ale. Formerly DURRELL ARMS and RAT & PARROT. (SW170, U163, U175, U188, U191)

SW16, GREYHOUND, 151 Greyhound La. No real ale. Reopened, now independently owned, ex-Spirit. A sad

Capital Pubcheck - update 195

demise for a former brewpub. (SW105, U131, U153, U169, U179, U189)

SW19, RSVP. Renamed **SLUG & LETTUCE** in April. Caledonian: Deuchars IPA; Fuller: London Pride. Formerly **YATES'S WINE LODGE**. (U152, U155, U184, U187, BM30)

SW19, SLUG & LETTUCE, 21 Worpole Rd. Reopened and renamed **MAGNOLIA**. No real ale. Formerly **BAR MED**. (U148, U181, U190, BRP35)

WEST

W5, FINNEGANS WAKE, 1 Ealing Green. Courage: Best Bitter, Directors. Acquired by Tattershall Castle Group (TCG) from Punch (ex-Spirit). (W93)

W9, TRUSCOTT ARMS, 55 Shirland Rd. Reopened and renamed **IDLEWILD**, Caledonian: Deuchars IPA; Guest beers (e.g. Bath Gem). Now operated by the Ruby pub chain, ex-Barracuda. Infamous for its ten handpumps and once a regular GBG entry, it has been 'designer-refurbished' as a bar and restaurant with pewter bar top, chandeliers and wooden flooring. First floor is now a cocktail bar. (W115, U192)

W13, ASHBY'S, 128 Uxbridge Rd. Adnams: Bitter or Wadworth: 6X. (W125)

GREENFORD (UB6), RED LION, Ruislip Rd. Fuller: London Pride; Shepherd Neame: Spitfire. (W142)

TWICKENHAM (TW1), FILTHY'S, 11 London Rd. Renamed **GRAND UNION**. Courage: Best Bitter; Caledonian: Deuchars IPA or Fuller: London Pride. Formerly **HOBGOBLIN**. (W203, U188)

PUBS CLOSED OR CEASED SELLING REAL ALE

CENTRAL

EC1, BOTTLESCRUDE, Free (Davys), closed after 34 years, premises currently empty. (U121, U131)

EC1, ROYAL STAR, Enterprise, ex-Watney via Unique, no real ale. (E23)

EC2, PLOUGH, Free, closed and boarded up. (E34)

EC3, WINE LODGE, Young, confirmed closed, future uncertain following unviable rent increase. (E39, U194)

EC4, CLACHAN. Renamed **SERJEANTS** by 2005, ex-S&N, closed and boarded up. (E47)

WC2, BAT & BALL. Renamed **FUDGE**, H removed.

Now completely transformed from a traditional pub into a contemporarily decorated gay bar. (W28)

W1(F), PINT POT. Renamed **BAR AT TCR**, H removed. Another trendy refurbishment and under new management. Believed disposed of by Punch (ex-Spirit). (W48)

W1 (Mar), ALL BAR ONE, 7-9 Paddington St, sold by M&B and renamed **LA VINA**, H removed, a wine bar and restaurant retaining small bar area with keg beers. (W49)

W1(S), CALLAGHAN'S, Free, closed by January along with whole Regent Palace Hotel, future uncertain. (W64)

EAST

E1, BARLEY MOW, ex-Watney. Former pub converted to residential use, now demolished. (E60, U92, U163). (E79, U124)

E2, HOPE (YE OLDE), Free, closed and demolished. Formerly **BUCKERS FREE HOUSE** for a while. (E79,

APPLICATION TO JOIN CAMRA

I/We wish to become members of the Campaign for Real Ale Limited and agree to abide by the Memorandum and Articles of Association of the Campaign.

Name(s) _____

Address _____

Postcode _____

Signature _____ Date _____



**CAMPAIGN
FOR
REAL ALE**

I/We enclose the remittance for individual/joint membership.

	Individual Annual		Joint Annual		Individual Life	Joint Life
	DD	Non-DD	DD	Non-DD		
UK and EEC	£20 <input type="checkbox"/>	£22 <input type="checkbox"/>	£25 <input type="checkbox"/>	£27 <input type="checkbox"/>	£360 <input type="checkbox"/>	£450 <input type="checkbox"/>
Rest of the World	£25 <input type="checkbox"/>	£27 <input type="checkbox"/>	£30 <input type="checkbox"/>	£32 <input type="checkbox"/>	£450 <input type="checkbox"/>	£540 <input type="checkbox"/>
Under age 26/Student	£11 <input type="checkbox"/>	£13 <input type="checkbox"/>	£14 <input type="checkbox"/>	£16 <input type="checkbox"/>	-	-
Unemployed/Disabled	£11 <input type="checkbox"/>	£13 <input type="checkbox"/>	-	-	-	-
Over 60	£11 <input type="checkbox"/>	£13 <input type="checkbox"/>	£14 <input type="checkbox"/>	£16 <input type="checkbox"/>	£198 <input type="checkbox"/>	£252 <input type="checkbox"/>

Send your remittance (payable to CAMRA Ltd) to:

Membership Secretary, CAMRA Ltd, 230 Hatfield Road, St Albans, Herts AL1 4LW

Capital Pubcheck - update 195

U69, U75, U79)

E3, MATTER OF TIME, Punch, closed. Formerly FLAUTIST & FIRKIN, originally HORN OF PLENTY. (E90, U96, U155)

E3, MOULDERS ARMS, Enterprise, now demolished. (E91, U76, U160, U174, U189)

E3, TENTERDEN ARMS, Enterprise, closed and boarded up. (E93, U159, U191)

E6, GREEN MAN, S&N Pub Enterprises ex-Taylor Walker, closed and for sale. (E104, U191)

E7, OLD SPOTTED DOG, ex-Watney, still closed. (E108, U131, U163, U180)

E7, WHITE HART. Renamed **TERRY SPINKS MBE**, ex-Bass, closed, future uncertain. (E109, U162)

E8, EARL OF ZETLAND, ex-Whitbread, latterly an hotel, now demolished in April 2007. (E112, U83, U96, U194)

E8, HAVELOCK ARMS, ex-Whitbread, now demolished. (E113, U163)

E14, BRUNSWICK ARMS, ex-Watney, closed and boarded up. (E142, U187)

E16, HENLEY ARMS, ex-Bass, no real ale. (E159, U147)

E18, HOGS HEAD, Laurel, ex-Whitbread. Renamed **SLUG & LETTUCE**, H removed. Originally **HOGSHEAD**. (U147, U163, U181)

BARKING, FISHING SMACK, ex-Taylor Walker. Now being demolished along with surrounding buildings and to be replaced by residential development. (X11, U165, U166, U170, U185)

GOODMAYES, STANDARD BEARER, ex-Wetherspoon. A planning application for residential development has predictably now been submitted to Redbridge Council. (U152, U191)

LITTLE HEATH, HAW BUSH, ex-Bass (Harvester). Now a planning application for conversion to residential use has been submitted to Redbridge Council. (X81, U192)

NORTH

N1, CROWN & ANCHOR, ex-Watney, previously reported as converted to flats, now being converted to a single residence. (N40, U137, U159, U182)

N1, ED VI, Free, converted to church. Formerly **KING EDWARD VI**. (N49, U182, U185)

N1, PENNY FARTHING, ex-Bass, now being converted to pizza restaurant. (N54, U189)

N7, CALEDONIAN ARMS, Free, previously reported as converted to café, now a hostel. (N85, U178, U184)

N7, PROGRESS BAR. Renamed **TUFNELLS**, Enterprise, no real ale. Formerly **TUFNELL PARK TAVERN**. Note correct previous name. (N91, U184)

N16, MONARCH, Enterprise, ex-Labatts, no real ale. (N129, U109)

N16, SUTTON ARMS, Free, confirmed now converted to flats. (N131, U165)

N19, BLARNEY STONE, ex-Taylor Walker, closed, future uncertain. Formerly **ALL POINTS WEST**, **SALTBAR** and originally **RAILWAY HOTEL**. (N145,

The Ailsa Tavern

St Margarets, Twickenham

NEW! NEW! NEW!

- Innovative new chef with new daily lunchtime and evening menu
- 3 fantastic beers always available:
London Pride, Black Sheep and Timothy Taylor's Landlord
- Contained pub garden
- Quiz Night Thursdays

**Watch this space for details of
forthcoming Beer Festival this August**

*15 minutes walk from St Margarets station; H37 bus stops just outside;
5 mins walk from Twickenham Lock on the Thames; 20 mins walk from
Richmond station, District Line; 10 mins walk to Twickenham Rugby Stadium.*

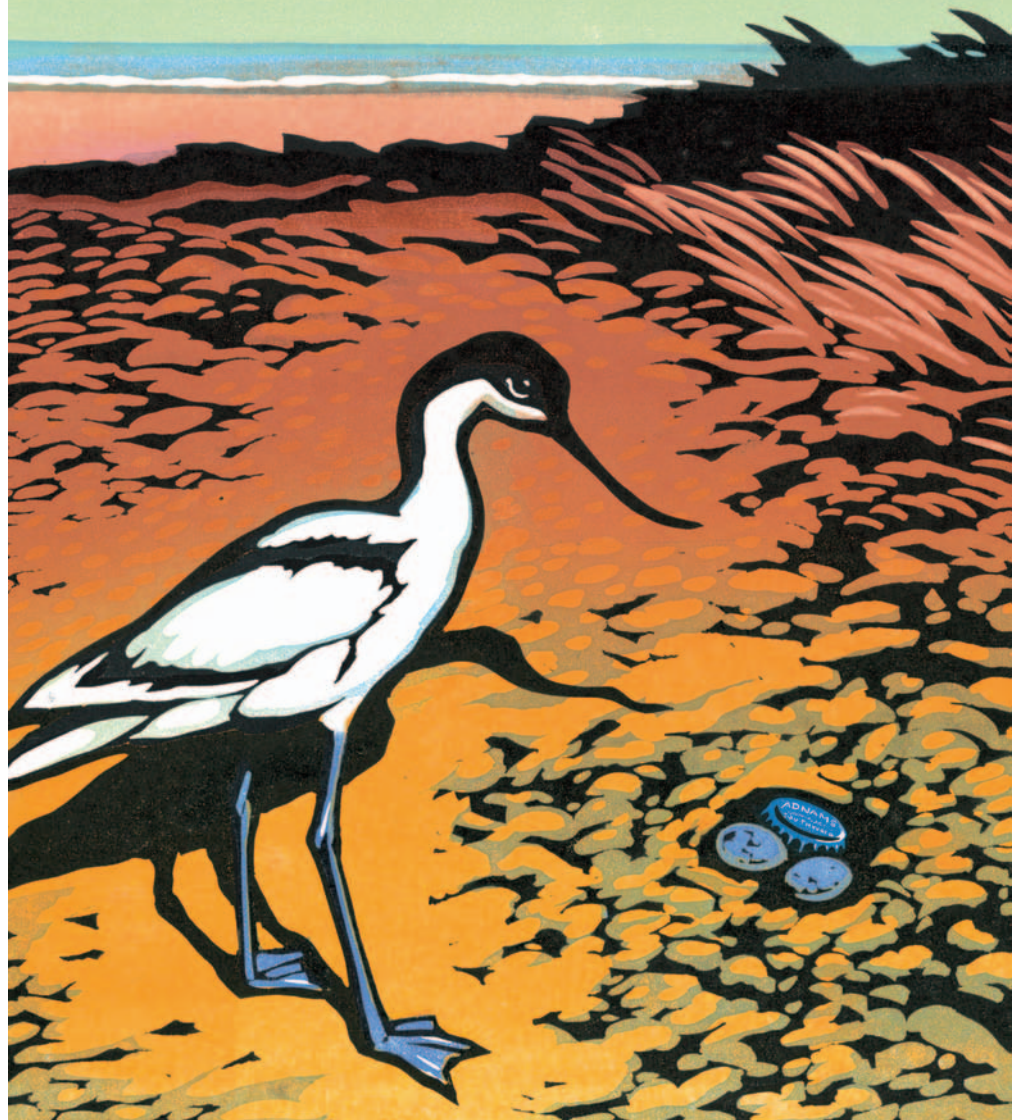
263 St Margarets Road, St Margarets, Twickenham, Middx TW1 1NJ

Tel: 020 8892 1633

Open 11am - 11pm Monday to Saturday, 12 noon - 10.30pm Sunday

ADNAMS. BEER FROM THE COAST.

ADNAMS PLC, SOLE BAY BREWERY,
SOUTHWOLD IP18 6JW,
WWW.BEERFROMTHECOAST.CO.UK



Capital Pubcheck - update 195

U158, U167, U168, U176)

ENFIELD EAST (EN3), ORDNANCE, Punch, ex-Bass, closed, future uncertain. Formerly **BARNYARD**. (N239, U160)

ENFIELD EAST (EN3), BLACK HORSE, Enterprise, ex-Watney via Unique, no real ale. (N239)

ENFIELD EAST (EN3), GOLDEN HIVE, Punch, ex-Bass, no real ale. (N240)

ENFIELD EAST (EN3), WHITE HORSE, Greene King, closed and boarded up. (N242, U162, U189)

ENFIELD EAST (EN3), WHITE HOUSE, Enterprise, ex-Watney via Unique, no real ale. (N242)

NORTH WEST

NW1, ABBEY, ex-Bass, no real ale. (N161, U175, U183)

NW1, CAMDEN FALCON, Free, planning permission now granted to convert former bar area to residential use to match upper floors. (N162, U184)

NW1, CELLARS, Free, no real ale. Regent Hotel, now renamed Landmark. (N163)

NW1, LUSH. Renamed 'Fifty-five', Enterprise. No draught beer, bottled beers only: delete from pub database. Formerly **BLAKES**, originally **LOCOMOTIVE**. (N169, U138, U184)

NW1, ROYAL EXCHANGE, ex-Courage, planning application now submitted for oriental karaoke bar. (N174, U192)

NW5, DUKE OF ST ALBANS, S&N Pub Enterprises, H

unused. Was **PLATINUM BAR** for a while. (N198, U106, U158, U192)

NW10, FINNIGANS WAKE (SAL'S BAR), 249-253 Neasden La, Free. The **FINNIGANS WAKE** part at 251-253 is closed and due to be converted to a William Hill betting shop. **SAL'S BAR** remains open now separately at 249. (N222, U109)

COCKFOSTERS (EN4), BAR MED. Renamed **MOJO BAR**, Free, closed, future uncertain. Formerly **GERSHWINS**. (N246, U157, H41, U162)

WEMBLEY (HA9), PLOUGH, Greene King, H removed. (W221)

SOUTH EAST

SE1, ALL BAR ONE, 1 Chicheley St, M&B, H removed. (U150)

SE1, FLORENCE NIGHTINGALE, ex-S&N, now demolished. (SE16, U107, U184)

SE6, GREEN MAN, ex-Whitbread (Beefeater). The prospective developer has lodged an appeal against Lewisham Council's recent refusal of planning permission for residential development. (SE68, U184, U186)

SE6, RUTLAND ARMS, ex-Free. A local community campaign has been launched to oppose a planning application to Lewisham Council from the developer owner to convert and extend the building for residential use. (SE68, U192)

SE11, BAR ROOM BAR, ex-Bass, no real ale. Formerly **TANKARD**. (SE111, U152)

Priory Arms a genuine free house

83 Lansdowne Way, Stockwell, SW8
(5 minutes Stockwell Tube) Tel 020 7622 1884

The Cask Marque logo guarantees the quality of our beer. Here's our ever changing range...



- Hop Back Summer Lightning, Adnams and Harveys Best always available
- Two guest beers always available from Sharps, Titanic, Downton, Nethergate, York, JW Lees etc
- Budweiser Budvar and Erdinger always on draught
- Thatchers dry cider
- Recently renovated interior
- The Continental Bottle Beer Selection includes 12 different brands and changes weekly
- PLUS fruit beers and wines including Belgium's Chimay and Duvel
- 20+ Irish and Scottish Malt whiskies
- 20 wines by the glass or bottle
- Sunday night quiz

FOOD AVAILABLE MONDAY - SATURDAY 12 NOON - 9PM
SUNDAYS 12 NOON - 5PM

SE11, SOUTH LONDON PACIFIC, Free, ex-Bass. No draught beer, bottled beer only: delete from pub database. (SE106, U129, U168)

SE17, MONAGHAN'S, ex-Watney, closed. Formerly **KINGS HEAD**. (SE159, U188)

SE18, UNION TAVERN, Free, now demolished. The loss of one of the few remaining Woolwich town centre pubs. (SE174, U102, U180)

SE24, BROCKWELL PARK TAVERN. 133 Dulwich Rd. Renamed **GANLEYS** ten years ago but not previously reported, H removed. Acquired by Capital Pub Co in April and being fitted out as a brewpub (see SW6 COCK, below) (SE209)

SE26, GREYHOUND, M&B, no real ale. What was once one of Allied Breweries' heritage pubs and a gem with mosaic tiling, central bar and etched mirrors was partially ruined during its time as the Fweter & Firkin in the late '90s and then ripped apart after takeover by Bass (now M&B) as an 'Arena' music themed pub. It is now under threat of closure with the car park already flogged off to developers for residential use. The Sydenham Society are campaigning to save the pub (an inn has stood here since the 18th Century) but English Heritage are reported to have declined to intervene, ironically on the grounds of 'lack of original features'. A classic case of how our pub heritage is being destroyed by a combination of insensitive pub companies and greedy developers. How will Lewisham Council react to yet another planning application involving the loss of a prominent pub on its patch? (SE223, U114, U122, U151, U164)

BROMLEY, SKY, Free, closed, future uncertain. Formerly **ROYAL BELL**. (3SE220, U53, U58, U70, U163, 8K50, U193)

CHISLEHURST, FOX & DRAGON. Renamed **JIM THOMPSONS**. Converted to 'Zizi's' Italian restaurant. Originally **FOX & HOUNDS**. (3SE226, 8K63, U163)

CROYDON, CRICKETERS ARMS, 23 Southbridge Place, ex-Bass, closed and boarded up. (3SE238)

CROYDON (SELSDON), FORESTDALE ARMS, ex-S&N, no real ale. Formerly **DALES**. (3SE239, U49, U107)

CROYDON, WADDON, Spirit, ex-Taylor Walker, no real ale. Formerly **WADDON HOTEL**. (3SE251, U55)

THORNTON HEATH, GRANGE, ex-Whitbread, H unused. (3SE282, U56)

THORNTON HEATH, HORSESHOE, Enterprise, ex-Courage, no real ale. (3SE283)

THORNTON HEATH, PARCHMORE TAVERN, Enterprise, ex-Labatts, no real ale. Formerly **SIMLA**. (3SE285, U98, U108)

THORNTON HEATH, PRINCE GEORGE, Enterprise, ex-Truman, no real ale. (3SE283)

THORNTON HEATH, WELCOME INN, Free, no real ale. Formerly **BRICKLAYERS ARMS**. (3SE282, U94)

THORNTON HEATH, WHEATSHEAF, M&B, ex-Bass, no real ale. (3SE285, U153)

SOUTH WEST

SW1(B), ROYAL COURT TAVERN, Free, closed, stripped of fittings, all signage removed, future uncertain. (SW39)

SW2, TWO WOODCOCKS, ex-Conway, now converted to offices. (SW54, U173)

SW3, BEAUFORT HOUSE, Free. No draught beer, cocktails and bottled beers only: delete from pub database. Formerly **BABUSHKA** and previously **DOME**. (SW56, U167, U184)

SW4, FINE LINE. Renamed **BISON BAR**, no real ale. Now a Mint Group pub, ex-Fullers. (U148)

SW8, CAFÉ MONEYPENNY. Renamed **REZ'S**, Free, no real ale. Formerly **MARKET TAVERN**. (SW76)

SW8, STOCKERS, Free, closed, future uncertain. Formerly **RED STILETTO**. (SW79, U171)

SW11, ANCHOR, Enterprise, ex-Inntrepreneur via Unique, H removed. (SW86)

SW11, PINE TAVERN, ex-Inntrepreneur. Previous report of demolition premature. Still standing although closed and boarded up. Planning permission now submitted to Wandsworth Council for demolition and replacement by flats. (SW89, U170, U175)

SW11, UNITY. Renamed **LITTLE BAY** by Feb 2005. Free. No draught beer, cocktails and bottles only: delete from pub database. Formerly **PORTER BLACK'S BAR** and **WALSH'S** for a while. (SW90, U151, U160, U170)

SW11, YATES'S WINE LODGE. Renamed simply **YATES'S**. Laurel, ex-Yates's, and now renamed again to **REVOLUTION** following sale to 'Inventive Leisure Services Ltd'. H removed. (U149, U155)

SW14, TAPESTRY BAR, Greene King, H unused. Formerly **JOLLY MILKMAN**. (SW98, U170)

SW15, KINGS HEAD, Enterprise, still closed, planning application for site redevelopment turned down by Wandsworth Council. (SW101, U137, BRP21)

SW16, HORSE & GROOM, ex-S&N, closed and boarded up. Was **BIG HAND MO'S** for a while. (SW105, U153, U185)

SW18, JOLLY GARDENERS, Enterprise, ex-Inntrepreneur via Unique, H unused. (SW113, U138, U183)

SW18, LITTEN TREE, ex-SFI, now demolished for site redevelopment. (SW113, U146, U175)

SW18, ROYAL OAK, Punch, H unused. (SW114, U152, U177)

SW19, KING OF DENMARK, Globe, still closed, planning application for site redevelopment turned down by Merton Council but appeal lodged. (SW118, U193, BRP34)

SW19, PRINCE OF WALES, 336 Western Rd, Wellington Pub Co, closed since 2003 but planning application for site redevelopment turned down by Merton Council by reference to its pub protection policy. (SW119, U142, U174, BM29, U192)

SW19, THE BAR CAFÉ, Free, closed apparently due to building subsidence. (U164, U187, BM32, U192)

NEW MALDEN (KT3), BOBOS. Renamed **RONNIES** by mid 2005, Enterprise, ex-Inntrepreneur, closed. Formerly **B WON**. (SW151, U172, KT35)

MITCHAM (CR4), BEEHIVE, ex-Bass. Flats being built behind retained facade. (SW145, U177, U185)

WEST

W4, CROWN & ANCHOR. Sold by Capital Pub Co to unknown owners. Refurbished, H removed. The saga continues for this former Young's pub 'rescued' by Capital at some cost from rumoured intended conversion to a

Capital Pubcheck - update 195

shop. (W87, U185)

W7, **RED LION**, Greene King, closed in August 2006, future uncertain. (W108)

W11, **CAFÉ MED**, Free, converted to a 'Mediterranean Kitchen' restaurant. (W118)

GREENFORD (UB6), **WHITE HART**, Enterprise, closed following fire damage. (W142)

HEATHROW AIRPORT (TW6), **PARALLEL 54**, closed and dismantled. (W162)

HOUNSLOW (TW3), **RIFLEMAN**, JT Davies, closed and boarded up. (W170)

RUISLIP (HA4), **GEORGE**, M&B, H removed. (W182)

RUISLIP (HA4), **TALLY HO**, ex-Bass, 'Lost local' in W guide reported as demolished following fire, now replaced by housing. (W227)

RUISLIP (HA4), **WHITE BEAR**, Enterprise, H removed. (W184)

RUISLIP (HA4), **WINDMILL**, M&B, closed. (W184)

SOUTHALL (UB1), **BEACONSFIELD ARMS**, Free, demolished: only pub pole sign remaining. (W186)

SOUTHALL (UB2), **BLACK DOG**, Free, closed and boarded up. (W186)

SOUTHALL (UB1), **LADY MARGARET**, S&N Pub Enterprises, closed and boarded up. (W186)

TWICKENHAM (TW2), **AUSTINS BAR**, Free, closed, future uncertain. (W200)

UXBRIDGE (UB8), **CHILTERN VIEW**, Greene King, closed, future uncertain. (W206)

UXBRIDGE (UB8), **FIG TREE**, Greene King,, H removed. Formerly **OLD BILL**. (W211, U190)

UXBRIDGE (COWLEY PEACHEY) (UB8), **TURNING POINT**. Renamed **WATERS EDGE**, no real ale. (W215)

OTHER CHANGES TO PUBS & BEER RANGES

CENTRAL

EC1, DUKE OF YORK, -beers listed; +Wells: Bombardier. Now Massive, ex-Watney. (E15)

EC1, NEW MARKET, 26 Smithfield. Renamed **26 SMITHFIELD**. Note correct address. Was **FROG & FIDDLE** for a while. (E21, U83, U121, U152, U169)

EC1, PEASANT, +Guest beers. Formerly **GEORGE & DRAGON**. (E16, U19, U80, U92, U157, U168)

EC2, BULL, -beers listed; +Fuller: London Pride (not always available). Recently refurbished. Loud music and pop videos now predominate. Formerly **COLLINS** for a while. (E30, U82, U169)

EC2, WHITE HART, -beers listed; +up to four changing real ales from regional brewers. (E36, U64, U67)

WC1, ENTERPRISE, -beers listed; +three changing regional brewers' beers (e.g. Caledonian, Everards and Hook Norton). (N22, HB7, W18)

WC1, GOOSE. Reverted to **MARQUIS CORNWALLIS**, -beers listed; +Shepherd Neame: Spitfire; +Taylor: Landlord; +Guest beers (e.g. Batemans, Exmoor and Okells); +Weston Vintage Cider. Traditional décor with plenty of seating. (N24, U124, U159, HB8, W19)

WC1, PRINCESS LOUISE. Temporarily closed until November while a major refurbishment takes place in the listed pub. Let's hope that Sam Smiths retain real ale, which has been lost in some of their recent refurbishments in London. (N29, U130, HB12, W24)

WC2, NELL GWYNNE TAVERN. Grade II listed pub currently under threat of closure due to unwillingness of landlords, Family Leisure Holdings, to renew the lease of 14 years. It is rumoured that the owners have aspirations to convert the pub for residential or office purposes if planning permission can be obtained from Westminster Council, although it is thought no application has yet been submitted. (W36)

W1 (Mar), **DUSK**. Renamed **COCO MOMO**, now Free, ex-Spirit, still no real ale. (W52)

W1 (Mar), **MARYLEBONE BAR & KITCHEN**. Renamed **TEMPERANCE** in Dec 2006, -Fuller: London Pride; +Adnams: Broadside; +Greene King: IPA. Now Free, ex-Spirit, under same management as the Endurance in W1 Soho. (W53)

EAST

E2, HARE, -beers listed; +Greene King: IPA; +Taylor: Landlord. (E81, U112, U158, U164)

E3, BOW BELLS, +Guest beer (e.g. Wooden Hand brewery). (E89, U137, U140)

E14, NARROW STREET (PUB & DINING ROOM). Renamed **NARROW (THE)** by new owner Gordon Ramsay, +Caledonian: Deuchars IPA. Formerly **BARLEY MOW**. (E142, U171, U192)

NORTH

N1, WELLINGTON, - Greene King: Abbot; +Courage: Best Bitter; +Guest beers from microbreweries. (N41, U159, U185)

N4, OLD DAIRY, -beers listed; +Shepherd Neame: Spitfire; +Taylor: Landlord. Acquired by Real Pubs Ltd from Broken Foot. (U130, U168)

N8, MAYNARD ARMS. Now simply **MAYNARD**, +Greene King: Abbot; +Guest beers. Formerly **HUNGRY HORSE (THE MAYNARD)** for a while. (N94, U117, U143, U157)

N9, ROSIES (OF EDMONTON). Freehold for sale by Greene King. Formerly **RAT & CARROT**. (N100, U117, U181, U194)

N10, MAID OF MUSWELL, -beers listed; +Adnams: Broadside; +Taylor: Landlord; +Guest beers changing weekly. Refurbished with new family menu and larger outdoor garden area. (N104)

N20, THREE HORSESHOES, -beers listed except Fuller: London Pride; +Greene King: IPA; +Taylor: Landlord. (N148)

N21, HALF MOON. Renamed **THREE WISHES**, -beers listed except Greene King: IPA, Abbot; +Fuller: London Pride. (N151, U145, U163, U194)

N22, SEVEN OAKS. Renamed **SKOLARS** by Oct 2004, -beers listed; +Greene King: IPA. Now Punch, ex-Bass. (N157)

NORTH WEST

NW3, WHITE BEAR (YE OLDE), -beers listed except Fuller: London Pride; +rotating range of guest beers including from Batemans, Archers and micros. (N191, U159)

NW6, CARLTON TAVERN, -beers listed; +Young: Bitter, Special. Now Punch, ex-Bass. (N204, U149)

NW6, RED LION. Renamed **WESTBURY**. Renovated with a pool lounge and DJs at weekends. Still no real ale. (N206, U149)

WHAT'LL IT BE THEN?

A PINT OF THE USUAL, OR A
LIFE-CHANGING EXPERIENCE?

Allow us to introduce you to an old friend. Fuller's ESB, three times Champion Beer of Britain, seen here in its smart new livery. Don't worry, the beer's just the same as ever. But if it's been a while, maybe it's time you reacquainted yourself with its uniquely rich, deliciously fruity flavour and long, satisfying finish. It could well be the happiest reunion of your life.



ESB. THE CHAMPION ALE.

Capital Pubcheck - update 195

BARNET (EN5), WEAVERS BAR. Former Chinese restaurant premises next door now incorporated into pub increasing size by c 40%. Formerly **WEAVER**. (N253, H21, U188)

EAST BARNET (EN4), KINGS HEAD. Renamed **DRUM**, -beers listed; +Greene King: IPA. Now Punch, ex-Taylor Walker (not Free). Name now matches hanging pub sign which for some years has featured a drum and drumsticks! (N247, U165, U170, H46)

EDGWARE (HA3), BLACKING BOTTLE. Renamed **THREE WISHES**, -beers listed except Courage: Best Bitter; +Guest beer. Sold by Barracuda to the Wishing Well group late in 2006. (N255, U138, U140, U153)

HAREFIELD (UB9), PICKLE JAR. Renamed **HAREFIELD**, -Wells: Bombardier; +Boddington: Bitter. Renovated as a smart non-smoking pub. Beer Club Wednesdays 6-9pm with real ale no more than £2/pint. (W147)

HAREFIELD (UB9), WHITE HORSE, -beers listed; +Greene King: IPA; +Wells: Bombardier. Under new ownership and now Free, ex-Spirit. (W148)

NORTHWOOD (HA6), NORTHWOOD HILLS. Has become a pub-cum-Indian restaurant with a contemporary refurbishment removing original features. Still no real ale. (W178)

SOUTH EAST

COULSDON, FOX. Correct address is Fox Lane, off Coulsdon Common. (3SE229)

COULSDON, LION, -beers listed; +two beers each from Hepworth (of Horsham) and Shepherd Neame breweries always available. (3SE244)

COULSDON, PISTOLS WINE BAR. Correct address is 208 Brighton Rd. (U168)

THORNTON HEATH, WETHERSPOONS. Renamed **FLORA SANDES**. The name refers to a First World War heroine of the Serbian Army presumably with some local connection. (U141)

SOUTH WEST

SW1(W), OLD STAR, -beers listed; +Greene King: IPA, Abbot. Acquired by Greene King from Laurel (ex-Whitbread) by early 2005. (SW49, U187)

SW4, PRINCE OF WALES, -beers listed except Adnams: Bitter; +Taylor: Landlord; +Guest beer (e.g. Thwaites Original). Now Enterprise, ex-Whitbread. (SW60, U145)

SW6, CHANCERY, -beers listed; +Greene King: IPA, Abbot. Formerly **FRONT ROOM**, originally **HALFWAY HOUSE**. (SW67, U136, U150, U167)

SW6, COCK, 360 North End Rd. Renamed **COCK & HEN** in March and now a brewpub, -beers listed: +two Adnams beers (e.g. Explorer, Oyster Stout or Regatta), +Cock & Hen: Bonobo Beer (4.5%), a dark and fruity beer brewed on the premises. A joint venture between entrepreneur Scott Collins and the Capital Pub Co, it has been fitted out with a 47 barrel brewing plant by consultant microbrewer Dave Porter. Czech, German and Meantime keg beers also available. Optional table service for drinks. Food available. Large dark wood panelled bar leading at rear to large outdoor patio. Open 12-11.30 Sun-Thu, 12-12.30am Fri/Sat. (SW66, U158, U188)

SW6, WHITE HORSE, M&B. Long time licensee Mark Dorber has now left after some 25 years at the pub.

Adventurous beer range (currently Adnams: Broadside, Fuller: ESB, Harvey: Best Bitter, Oakham: JHB and Rooster: Yankee) continues under new management. (SW71, U168))

SW8, BELL. Renamed **BAR SW8**. Was **TURNERS 2** for a while. Some original signage remains. (SW76, U171, U178)

SW11, CEDARS. Renamed **AMNESIA (BAR)**, although retaining original name at top of building. (SW87, U141)

SW11, DOVEDALE HOUSE. Renamed **LIGHTHOUSE**, -Adnams: Bitter; +Ansell: Bitter. Now owned by Sabretooth Vintners, ex-Bass. Formerly **BAR ROOM BAR**, originally **CLOCK HOUSE**. (SW87, U125, U171, U192)

SW11, DUKE OF WELLINGTON. Planning permission now granted by Wandsworth Council to convert/extend to provide 11 flats. (SW87)

SW11, MATILDA. Renamed **WESTBRIDGE**, -Fuller: London Pride; +Adnams: Bitter. Free, now styled a 'Public House & Dining Rooms'. Previously **BLUE MANGO**, **PRODIGALS RETURN** and **PIG ON THE BRIDGE**. (U155, U175, U176, U180, U184)

SW11, PLOUGH. Still open whilst Wandsworth Council is reportedly minded to approve Young's planning application for demolition and provision of residential units, restaurant/café and a replacement pub. CAMRA objection notes the rarity of surviving 1960s pubs, the distinguishing tiled mural depicting the plough constellation and the cut glass stars in the glazed panel in the side entrance. (SW89)

SW17, MITRE. Renamed **LONG ROOM** in April as a 'bar & hotel' after complete internal refurbishment, still no real ale. (SW110, U151, U174)

SW17, ROUNDED OAK. Still open although licence reportedly revoked at police instigation owing to inadequate fire exits, infringement of permitted opening hours and a fatal stabbing in December. Formerly **GORDON BENNETT**. (SW109, U135, U151, U152, U159, U168, U174, U187, BM19, U192)

SW18, D BAR. Renamed **SAIGON LOUNGE** in 2006, still no real ale. Now a Vietnamese restaurant and bar. Formerly **JUST SO BAR**, originally **FOOTE & FIRKIN**. (U130, U146, U154, U165, U178)

SW19, BAOBAB. Renamed **BLUE**, now a music bar, still no real ale. Formerly **RIVERSIDE**, originally **ROYAL SIX BELLS**. (SW119, U142, U170, U173, U178, U179, U182, BM24)

WEST

W5, BELL. Renamed **LODGE TAVERN** after reft. (W92)

W5, CHANDLERS. Retains Adnams: Broadside + four other beers from regional brewers. (W92)

W7, ROYAL VICTORIA. Renamed **MCCANNS**, still no real ale. Was **LARKIN INN II** for a while. (W108, U191)

FELTHAM (TW18), ROSE & CROWN. Renamed **MANSSION (THE)**. No change to beer range. (W137)

HILLINGDON (UB10), LITTLE FOX. Renamed **CHAMPIONS**, still no real ale. (W165)

HOUNSLOW (TW3), LARKIN INN. Renamed **LARKINS CELLAR BAR**, still no real ale. (W170)

RUISLIP (HA4), ORCHARD, -beers listed; +Fuller: London Pride; +Greene King: Old Speckled Hen. Now

M&B, ex-Whitbread. (W182)

RUISLIP (HA4), SWAN. Regulars and staff are campaigning against plans by owners, Spirit Group (now Punch) to sell the historic pub to the Café Rouge restaurant chain. Letters and a petition have been sent to Hillingdon Council opposing Café Rouge's plans to convert the pub. (W183)

SOUTHALL (UB1), THREE HORSESHOES. Pub is under threat from the West London Tram scheme. (W188, U194)

TEDDINGTON (TW11), RAILWAY. Renamed **BLOATED MALLARD**, -Guest beers; +Draught Bass; +Courage: Best Bitter; +Harvey: Sussex Best Bitter. (W197)

TWICKENHAM (TW1), HOOK, LINE & SINKER. Renamed **RANCH** by new owners Mint Group, ex-Fullers, -beers listed; +Wells: Bombardier. (W203)

UXBRIDGE (UB8), GARDENERS ARMS, +rotating guest beer from regional breweries. (W148)

UXBRIDGE (UB8), GOOD YARN, +Grand Union and Rebellion beers. (W210)

CORRECTION TO UPDATE 192

PUBS CLOSED ETC

NW1, CROWDALE. Delete 'demolished' etc and replace with 'closed, building work under way'.

CORRECTIONS TO UPDATE 194

NEW & REOPENED PUBS ETC

NW2, SHISH. Delete entry; already in U191.

WEALDSTONE (HA3), HARE. Add: Punch, ex-Allied.

PUBS CLOSED ETC

ILFORD, PLOUGH. Delete 'now converted to'; replace with 'still closed but rooms available for hire, including to the church'.

N15, CONNAUGHT TAVERN. Formerly **BULL**. Refs should read: (N123, U165, U186)

Peter Smith

We are sad to report the unexpected death in March of Peter Smith. Peter was an active member of South West London Branch until he moved to Reading several years ago. He still returned each year however to do duty as a bar manager at Battersea Beer Festival, as well as working at Reading Beer Festival where the Quiet Tent this year was named 'Smithy's Bar' in his honour. Peter was also an early and active member of the Society for the Preservation of Beers from the Wood (SPBW).

Peter's approach to campaigning for real ale was to drink as much of it as possible. Former South West London Chairman Laurie Bishop remembers Peter as a very committed character who had a special ability to puncture inflated egos, especially, in the late 1970s, those of visiting National Executive members. Laurie also recalls Peter's ability to always find a good pub anywhere, and not always a GBG-listed one. Peter was renowned for his ability to put together tours of groups of rural pubs using only public transport and his legs.

Peter did not do things by half. In his obituary in *What's Brewing*, John Dearing mentions Peter setting out to read his way through the top 100 books in literary history from a list found in a national newspaper. It is understood that he had almost finished this project. Mike Moran of SW London Branch remembers him taking to opera in a similar fashion and attending performances of the major works in record time, with what Mike describes as a Teutonic passion. Peter also did the



Young's 135 round regularly, once in a week and a half. He also did the Harvey's and Fuller's equivalents several times.

Another story concerns a large, two-handled beer glass - possibly a double quart - that Peter spotted in a pub in the Midlands. Peter had it filled but was challenged by a local that he wouldn't finish it. The local left and returned to find Peter with an inch or so of beer left in the glass. The local was jubilant that he has been right about Peter not being able to finish it until the

pub guv'nor pointed out that Peter was on his third.

I remember Peter as a great sporting man with a keen interest in cricket, rugby and, not least, horse racing. He was going racing the day he died. He was also a great raconteur and my favourite story of Peter's comes from his surveying for the South West London Pub Guide in 1996. He went into a dubious pub in Battersea and, as part of the survey, asked the barman if they ever had any special events at the pub. The reply was, "Well, a bloke was mugged in the toilets the other lunchtime". I have also been told a story concerning a duck but I will leave that one there.

Some 80 friends attended Peter's funeral, with both SW London and Reading Branches of CAMRA well represented as well as the SPBW, and he was given the sort of send-off that he would have wanted.

Tony Hedger

Photo: Frantzesco Kangaris/ Wandsworth Borough News

Across the Commons

This article offers a healthy, long walk to a number of pubs in Wimbledon Village and surrounding areas. The walk will begin at East Putney tube station, then proceed to Putney Hill; then go across Wimbledon Common, and lead you, thirsty and tired, to wonderful watering holes to reward your efforts. In June, 2005, London was declared the third most expensive city in the world, after Tokyo and Kyoto, Japan, so walk for your physical well-being and your pocketbook and save those pennies to spend on good beer.

After leaving East Putney station, head down to Putney High Street for Putney Hill, the home of a famous 19th century author. After living with Dante Gabriel Rossetti in Chelsea for a number of years, another eccentric and talented writer, Algernon Charles Swinburne, ill and weak, moved to Putney to the home of poet, novelist and critic Theodore Watts-Dunton, who literally saved Swinburne's life. At No. 11, The Pines, Putney Hill, Swinburne found peace and refuge for nearly thirty years until his death in 1909, inspired by his daily traversing of Wimbledon Common. Every day Swinburne took his constitutional by walking to a pub, the Rose and Crown, in Wimbledon Village, one of our destinations on this walk.

After passing The Pines, continue on to the two Commons, Putney and Wimbledon, arriving eventually at the famous Windmill. If you wish, for a modest admission fee (£1 adults; 50p children and concessions), you can visit the Wimbledon Windmill Museum (Windmill Road, Wimbledon SW19), run by volunteers and open only on weekends. See www.wimbledonwindmillmuseum.org.uk/displays.htm for more information. According to Walking Literary London, 'During the 19th century, the millers acted as policemen, watching for duels from the windmill's balcony'. Among those who duelled were MPs and prime ministers. The Commons information centre is behind the windmill. If you are hungry, the café, run independently, is open every day from 10am. to 5pm and is famous for its greasy spoon breakfasts, although it also serves a variety of food and refreshments.

Before heading for the Village, take a short south westerly detour to two nearby Young's pubs, the Crooked Billet (15 Crooked Billet; 020-8946 4942) and the Hand in Hand (6 Crooked Billet; 020-8946 5720), a personal favorite which has an attractive front beer garden to sit in if the weather permits. A green is available for drinkers across from both pubs. About the Hand in Hand, the Good Beer Guide says, 'Originally a bakery, beer has been sold here since the 1860s when the pub was rented from the Watney family' and bought by Young's in 1974. The Crooked Billet 'has been selling Young's beers since

the 1880s and the brewery has owned it since 1928.' I found it strange that two Young's pubs are so close to each other, but each has its ambience. You know the beer will be good, so make your decision based on food, décor, or other preference.

Head north around the corner to Cannizaro Park (West Side Common, Wimbledon SW19), maintained by Merton Council, home of lovely gardens as well as operatic and jazz performances, open air dramatic offerings and family fun days in summer festivals, all with fees attached. However, the 'vast and beautiful landscaped garden' itself is free and was once the garden of Cannizaro House, now a hotel next door. Colourful flowers, statuary and an aviary are there to enjoy in a leisurely stroll and an atmosphere quite different from your walk across Putney and Wimbledon Commons. Peaceful, calming, and off the beaten track, this park is a surprise to come upon.

On the other side of the Common, in the Village, is our destination pub, the Rose and Crown (55 High Street, Wimbledon; 020 8947 4713), a Young's pub/hotel refurbished in 2002. At one time, Swinburne had his own chair here, but apparently it's disappeared. Another poet, Leigh Hunt, wrote in a letter about this pub, 'When I find myself in the little room with the window open, the garden before us and a glass of Claret on the table, care seems to be excluded.' And this is the atmosphere that still exists here, whether you want a quiet drink, a meal, or a sun-drenched beer in the beer garden at the back. Dating from the 17th century, the pub dominates the High Street and has something for everyone. Games and books are available in the non-smoking area, and children are allowed until 8pm. The usual range of Young's beers is available, very well kept.

After your long walk, take time to have a few pints responsibly and enjoy your time in Wimbledon. Having been on three intensive pub crawls there, ranging from four to eight pubs during the evening, I can vouch that Wimbledon and its surrounding area are full of good pubs, and so you have a wide choice.

© 2006 Judith Black

*(A walk across the commons from Wimbledon to Roehampton and Putney is among the **London Pub Walks**, published in February 2006 by CAMRA Books @ £8.99 and reviewed in the April/May 2006 issue of this magazine. All of the pubs in the area are described in the new local pub guide **Across the Commons** published by CAMRA SW London branch in February 2007 @ £2.00. Ed.)*





THE SWAN TAVERN

"A delightful marble topped ale bar" - TIME OUT

77 Gracechurch Street, EC3

a FULL RANGE of FULLERS CASK and BOTTLED ALES
and a CONSTANTLY ROTATING GUEST ALE



THE BELL

"The oldest small pub in the City of London" - TIME OUT

29 Bush Lane, EC4

FIVE CASK ALES always AVAILABLE including
DEUCHARS IPA, SPITFIRE, YOUNG'S BITTER, COURAGE BEST
and a ROTATING GUEST BEER



LONDON BRIDGE



THE WHEATSHEAF

"Boasts the best atmosphere of any of the Borough Market pubs"

6 Stoney Street, SE1

a FULL RANGE of YOUNG'S CASK and BOTTLED ALE
and the OCCASIONAL GUEST BEER

WINNER of the 2004-05 YOUNG'S BEER QUALITY
and CELLAR MANAGEMENT COMPETITION

- TIME OUT



Sixty years ago

I arrived in this country in May 1947 at the age of 24 having just married, in Rome, a member of the British occupying - or liberating - forces at the tail end of the Second World War. Being an Italian, I was used to drinking wine with my meals from an early age, while beer was considered almost a soft drink, to be drunk very cold and when thirsty, mainly in the summer. Of course, what was available in Rome was mainly the Italian 'Peroni', or the German 'Dreher' and 'Löwenbrau', all lagers.

As my husband had been on active service in North Africa and Italy for three years, he was granted three months' leave before resuming work as a civil servant. So we bought two bicycles and set off from London through the southern counties, eventually reaching Wales. We spent the nights in Youth Hostels, an institution which I found very strange as we were required to do some chores before leaving (but the price of the stay was very low!).

The summer of 1947 was very, very hot and as we cycled along I often became thirsty; and that's when I came into contact with the refreshing variety

of British beers but, to me, the very odd pub laws. In the afternoons, when we were very hot and bothered after cycling quite a few miles, the pubs were shut! I remember one landlord, who was just closing at 2pm, had pity on us and let us in for a short time. I found all this very puzzling. Equally strange was the expectation, almost a requirement, that ladies should want to drink only gin and orange or else Babysham. And of course, when we reached Wales, my husband made sure that we left it before a Sunday as the pubs were closed all day on Sundays.

It was also impossible to find any food in a pub and, as I was used to drinking alcohol only with food, I was sometimes very angry and occasionally embarrassed my husband by eating a sandwich I had brought with me: it was really a faux pas!

When our daughter, Paula, was born a couple of years later, the problems with pubs multiplied. But that is another story...

Laura Mardon

(now aged 84, and enjoying a beer in a pub at any time!)

As traditional restrictions are progressively lifted, some new ones are imposed. With the smoking ban imminent, the Editor would be glad to hear from other readers wishing to reminisce and compare drinking pleasures old and new.

TRAFALGAR FREEHOUSE

A traditional 'local'

23 High Path, Merton, SW19 2JY

Tel: (020) 8542 5342 e-mail: trafalgar@thetraf.com

www.thetraf.com

Always a choice of cask conditioned ales

Regular beer: Timothy Taylor Golden Best plus up to five guests



QUIZ NIGHT

Why not Come and join in our free to enter Quiz from about 8.30pm each Thursday - There is a prize for first and last place.

Dinner at the 'Traf'

On the second Tuesday of each month, between 7.30 and 9pm, we have a food night... come and enjoy a main course and a pint for just £5.99.

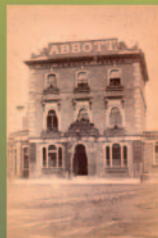


5 minutes from South Wimbledon Tube or Morden road tram stop...

The Pembury Tavern

90 Amhurst Road, London E8 1JH

**Third Beer Festival
18th – 22nd July 2007**



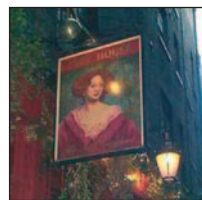
**40 Real Ales
Cider and Perry**

**Open 12–11 every day
Food served 12–3 and 6–9
and 12–9 on Sundays**

<http://www.individualpubs.co.uk/pembury/>

SPBW London Pub of the Year

It is one of London's most historic pubs, said to have been frequented by Nell Gwynne and, more recently, by Jude Law and Sienna Miller. Now the pub, named after the mistress of Charles II, is threatened with closure because of plans to redevelop the site. Situated in Bull Inn Court, a tiny alley off the Strand, the Nell Gwynne is a former finalist in the Evening Standard Pub of the Year competition. Licensee Trish Murphy said there had been a pub on the site since the Middle Ages. *"It used to be called the Bull Inn and Nell Gwynne used to use it,"* she said. *"She was very popular and after her death it was named the Nell Gwynne."*



Described on one website as "winningly old-fashioned", the current building dates back to the late 19th century, when the old pub was demolished to make way for the expansion of the Adelphi Theatre next door. *"It is very, very small,"* said Mrs Murphy, 61. *"It's not a tourist pub. People go down the Strand and don't know it's there. It is a proper boozer. I don't do food, only sandwiches."*

A petition to save the pub has been launched at <http://petitions.pm.gov.uk/savetheNell>

Anyone who has ever loved and lost a great old pub will understand.

THE LAND OF LIBERTY, PEACE AND PLENTY FREEHOUSE

CAMRA Award Winning Pub!

**Darts Tournament 18th June
Stub It Out Mini Fest
June 29th – 1st July
Kozmik Musik Kwiz
30th June
Games Day
Petanque & Aunt Sally
July 28th with Live Music**



- **5+ Real Ales**
- **NEW Garden Pavilion !**
- **Food Monday Evenings to 7.30pm**
- **Free Soft Drinks for Drivers of 3 + beer drinkers**
- **Over-sized lined glasses**
- **Indoor & Outdoor Games**
- **No under 14s in bar**

Real Ales, Real Food and a Real Welcome in a Real Pub!

See www.landoflibertypub.com or call us for further details

The Land of Liberty, Peace and Plenty

Long Lane, Heronsgate, Hertfordshire, WD3 5BS 01923 282226

R4 Bus Direct from Watford & Rickmansworth

2/3 mile M25 Junction 17, Follow sign to Heronsgate; 1 mile Chorleywood station

Idle Moments

THE ANSWERS

As promised, here are the solutions to the puzzles set in the April Idle Moments column.

NUMBER PUZZLES:

1. 1936 Crystal Palace Destroyed by Fire
2. 5 Digits in a Zip Code
3. 600 Feet in a Cable
4. 275 MilliLitres in a Half Pint Bottle of Beer
5. 1 Borough of London Spans the River Thames
6. 48 Contiguous States of the United States
7. 1066 Battle of Stamford Bridge
8. 3 Blind Mice
9. 10 Minutes in the Sin Bin for a Yellow Card
10. 1936 Year of the Berlin Olympics

BREWERY ANAGRAMS:

1. GRIND BROTH - BRIDGNORTH
2. NO STOCK SPEAKER - PEAKSTONES ROCK
3. WILT REALM - WATERMILL
4. BRA STARE - BAREARTS
5. BUCK FOILS PEER - ISLE OF PURBECK
6. DIE ON A TWIG - WINDIE GOAT
7. THAT SMEW - MATTHEWS
8. CHARTS DALE - CATHEDRAL'S
9. HATTER'S VAN - STRATHAVEN
10. MAD HAM GOON - GOODMANHAM

SBY4:

The beers described as "A bit beastly" come from the following breweries:

1. Dog Daze - Stumpy's
2. Fox - Exmoor
3. Gannet Mild - Earl Soham
4. Parmigan - Harviestoun

5. March Hare - Digfield
6. Vixen's Vice - Alcazar
7. Coyote Bitter - Wolf
8. Iron Horse - Hepworth
9. Slurping Stoat - Gribble
10. Azza Newt - Burrington

GENERAL KNOWLEDGE:

1. The World's first circular airport terminal building, now known as The Beehive, is at Gatwick Airport.
2. The particular characteristic of a painting called a tondo is that it is circular.
3. The dog in Jerome K. Jerome's Three Men in a Boat was Montmorency.
4. And still on the subject of dogs, Mr. Punch's is called Toby.
5. ... and Winston Churchill's dog, Rufus, was a poodle.
6. The event that took place near Cheddington, Buckinghamshire on 8th August 1963 was the Great Train Robbery.
7. In the Goon Show the musical interlude provided by Max Geldray was on the harmonica (as you can confirm by listening to BBC7 - digital radio - every Monday at 7.00pm).
8. And still with the Goon Show, the announcer was Wallace Greenslade.
9. In "I'm Sorry I haven't a Clue" the other original contestants alongside Graham Garden and Tim Brooke-Taylor were Bill Oddie and Jo Kendall (also from I'm Sorry I'll Read That Again).
10. And finally, in Hancock's Half Hour (on the wireless) the two actresses who preceded Hattie Jacques were firstly Moira Lister and then Andre Melly (sister of George Melly).



Red Squirrel Brewery

Producer of the finest quality hand crafted cask conditioned ales

Red Squirrel Brewery supports local small business, commerce, employment and positive environmental conservation.

For more information contact:-

Red Squirrel Brewery
14B Mimram Road
Hertford, Hertfordshire
SG14 1NN
Tel 01992 501100

gary@redsquirrelbrewery.co.uk



"Everything is funny so long as it is happening to someone else." (Will Rogers 1879-1935).

So much for humour. Welcome to Idle Moments. If you have a few moments to idle away, maybe you will find amusement in these little puzzles - but then again you might not.

This month, by way of no change at all, I think I shall start with some number puzzles. If you have a very long memory you may even remember some of these; they have all appeared before some time since 1993, except for one which is new:

1. 5 OGM of SSR
2. 3 AS
3. 7 W from E to W
4. 9 F is the L of a TTT
5. 1 FO the CN
6. 6 OTB
7. 12 RUC in the GP
8. 3 S on a SS
9. 2 C have LB with the US
10. 8 RSN OH

And now, if you are really clever (or is that sad?) you may be able to reconstruct the names of the breweries that I ripped apart just to produce these meaningless phrases:

1. NEVER DO
2. ST. POODLE
3. CAME WITH NINE FLAKES
4. LASS MOWER
5. WANTED BOLT
6. DOWNLOADS
7. HARRIDAN READ BOND
8. WAS HOLDER
9. SLAVE? NEVER!
10. DIG FRONT BUN

And so with awful inevitability we come to 5BY4. This month I have given it the subtitle, "How well do you know the Underground?" All you have to do is match the stations with the Underground line on which they are positioned. I did think of being really mean and putting in some stations that are on two lines but I didn't because I thought that might lead to other possible solutions and make it too much like that SodYouCo, or whatever it's called. Anyway here they are so see what you make of them:

- | | |
|-------------------------|-----------------------|
| 1. Tufnell Park | A. Central |
| 2. Highbury & Islington | B. Bakerloo |
| 3. Turnpike Lane | C. Hammersmith & City |
| 4. Shoreditch | D. Jubilee |
| 5. Maida Vale | E. Northern |
| 6. Goldhawk Road | F. Piccadilly |
| 7. Pinner | G. District |
| 8. Chiswick Park | H. East London |
| 9. Kilburn | I. Victoria |
| 10. Bethnal Green | J. Metropolitan |

And now (There I go starting another sentence with "And"!) we come to the last round which I laughingly call General Knowledge (more like Esoteric Knowledge sometimes). Pick the bones out of this lot as my old Mum might have said:

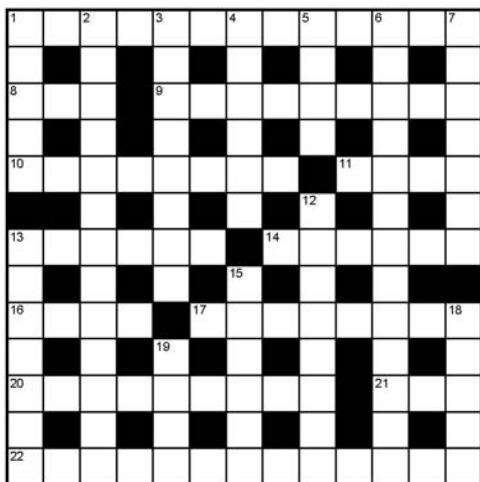
1. On what river do the Victoria Falls stand?
2. This river is about 34 miles long and flows from Lake Erie into Lake Ontario - what is it called?
3. The Isle of Wight has three rivers of which the largest is the Medina but what are the other two called?
4. What mutual help organisation was formed when New York stockbroker Bill W and surgeon Bob S met in Akron Ohio in 1935?
5. Also in Akron, Ohio what competition has taken place annually since 1934 for contestants aged between 11 and 15 years?
6. In Gaelic it is known as Ellan Vannin, but by what name do we English know this place?
7. Tokinesse, Singapura, American curl, Cymric and Cornix Rex are all breeds of what domestic animal?
8. In what film did Marilyn Monroe play the part of Sugar Kane?
9. What star sign (if you believe in such things) is shared by the aforementioned Marilyn Monroe, Judy Garland, Thomas Hardy, The Duke of Edinburgh and the Marquis de Sade?
10. The martlet is a mythical bird, like a swallow but with no legs, of which six appear on the arms of which English county?

Letters and articles for publication
in *London Drinker* may now be
submitted online at
www.londondrinker.org.uk

**Advertise in the next
LONDON DRINKER**
Our advertising rates are as follows:
Whole page £260 (colour),
£220 (mono)
Half page £150 (colour),
£110 (mono),
Quarter page £80 (colour),
£55 (mono)
Phone Peter Tonge now on
020 8300 7693

Crossword

Compiled by DAVE QUINTON



Name

Address.....

.....

All correct entries received by first post on 25th July will be entered into a draw for the prize.

Prize winner will be announced in the October London Drinker.

The solution will be given in the August edition.

All entries to be submitted to:

London Drinker Crossword

25 Valens House

Upper Tulse Hill

London SW2 2RX

SOLUTION TO APRIL'S CROSSWORD



£20 PRIZE TO BE WON

ACROSS

1. Ground for pub facing road. [5,4,4]
8. Take some strange attitudes. [3]
9. Distant small estate extended. [9]
10. Buy tea in bag. [8]
11. Leading boozier always poetic after drink. [4]
13. Show off extremely frail relative. [6]
14. Irritated initially, could have a fit every day. [6]
16. No noise after god appears. [4]
17. Quiet time for the beer supporter. [8]
20. Top medic with ptomaine poisoning? It's a farce! [9]
21. Either way it's a performance. [3]
22. They may be religious but sit feebly and mess about. [6,7]

DOWN

1. Western aid for the young. [5]
2. Bury citizen is a top player. [13]
3. The panel redesigned jumbo. [8]
4. Testify to watching cricket? [6]
5. Drop race division. [4]
6. How one may hang two fish outside of opening delicatessen. [5,2,6]
7. Stopped circling city and went on. [7]
12. Swerves round officer in trenches, perhaps. [8]
13. Fare to local eatery. [4,3]
15. I am involved in celebrities' flight. [6]
18. Carefully moves top off barriers. [5]
19. Refusal to do without exercise. [4]

Winner of the prize for the February Crossword:
Pete Large, Ilford

Other correct entries were received from:

The A Team, Ted Alleway, Pat Andrews, Mark Antony, Geoff B, Mike Belsham, S.J.Block, Gladys Boyle, Eddie Carr, Chris Fran & a spotted dog, Dick "Tight Lines" Conlay, Charles Creasey, Kevin Creighton, Paul Curson, Kevin Deadman, John Dodd, Richard & Clever Clogs Douthwaite, Chris Ellis, Kathryn Everitt, Brian Exford, Arthur Fox Ache, George Gaskin, Marion Goodall, Paul Gray, J.E.Green, Alan Greer, Jez Haigh, Peter Haines, John Heath, Kevin Henriques, Andrew Hick, Graham Hill, William Hill, Sheerluck Holmes, Irish, David Jiggins, Terry Lavell, Mike Lloyd, Donald McAuley, Ian McNicol, Steve Maloney, K.I.May, Terry Mellor, M.J.Moran, Al Mountain, John Nevitt, Nigel Parsons, Mark Pilkington, Rod Prince, Derek Pryce, Richard Rogers, Bryan Smith, Helen Smith, Lesley Smith, Ken Taylor, Bill Thackray, Thamesmeado, Trevor Turner, Leo Walsh, Tony Watkins, Martin Weedon, Elizabeth Whale, John Williamson, Sue Wilson, Jon Wits, David Woodward, R.P.Wright..



**CAMPAIGN
FOR
REAL ALE**

The Cricketers

47 Shirley Road, Croydon

CR0 7ER

020 8655 3507

CROYDON CAMRA PUB OF THE YEAR 2007

*A family run pub with a friendly
atmosphere.*

Harveys ale on permanently

3 rotating ales from micro breweries

Crib night every Thursday

*Home cooked food available
midday to evenings*

*Appearing 5th July
The Bogus Blues Brothers 7pm*

*Watch out for our
'Meet the Brewer Night'*

New from

Hogs Back



Just taste it!

Hogs Back Brewery Ltd. Manor Farm, The Street, Tongham, Surrey. GU10 1DE
Tel 01252 783000 Fax 01252 782328 www.hogsback.co.uk