

Vol 30
No 4

LONDON DRINKER

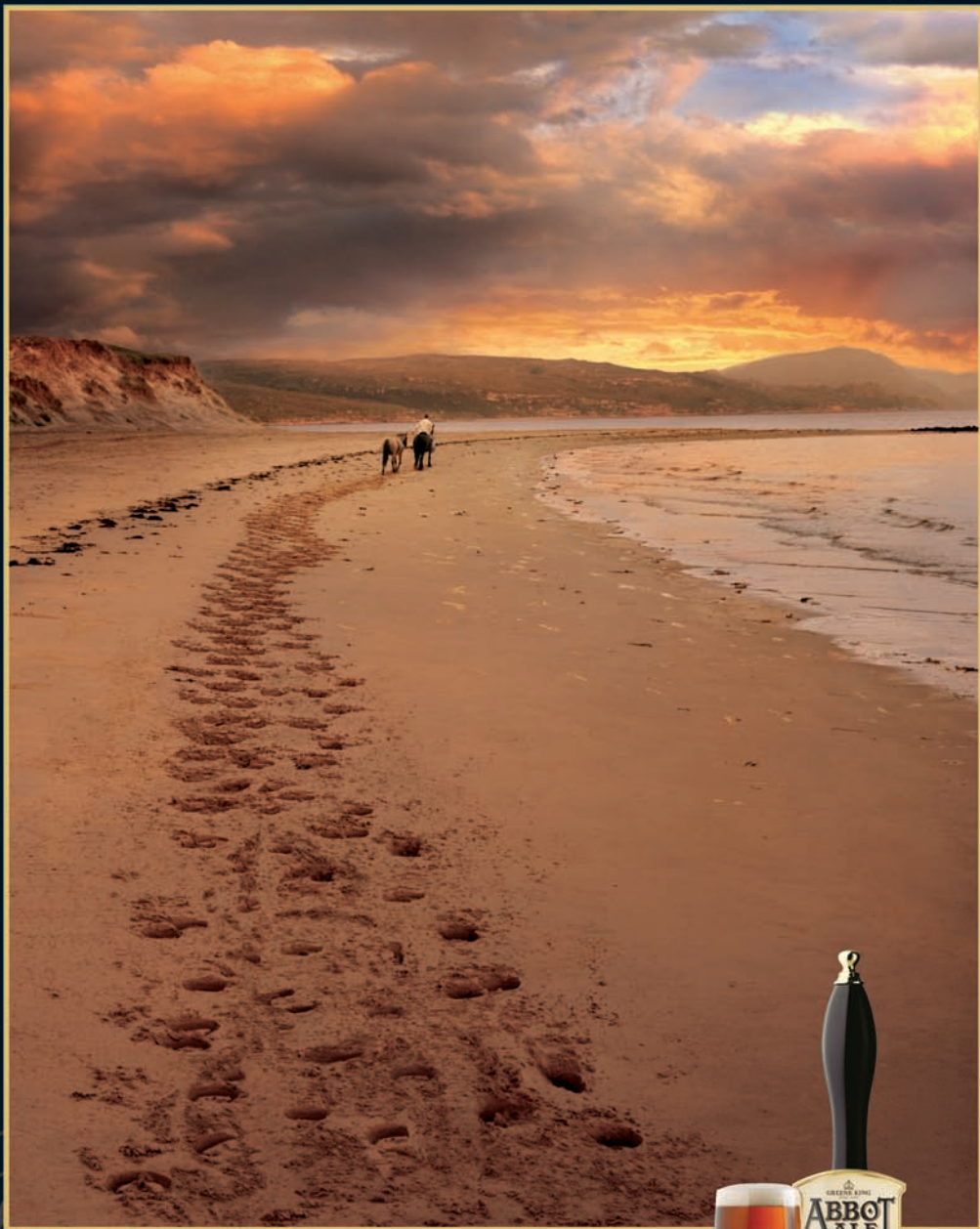
CAMRA
CAMPAIGN
FOR
REAL ALE

Aug
Sept
2008



The Mitre, Lancaster Gate (see page 37)

Brewed longer for a distinctive, full flavour



Real character doesn't happen overnight.
Nor are hidden depths immediately obvious.
But given time, they emerge.

WHEN YOU'RE READY, YOU'LL FIND IT.

London Drinker is published by Mike Hammersley on behalf of the London Branches of CAMRA, the Campaign for Real Ale Limited, and edited by Geoff Strawbridge.

Material for publication should preferably be sent by e-mail to geoff@coherent-tech.co.uk.

Press releases and letters by post should be sent to Tony Hedger, Apartment 11, 3 Bewley Street, London SW19 1XE

Changes to pubs or beers should be reported to Capital Pubcheck, 2 Sandtoft Road, London SE7 7LR or by e-mail to capitalpubcheck@hotmail.com.

For publication in October 2008, please send electronic documents to the Editor no later than Wednesday 10th September.

SUBSCRIPTIONS: £3.00 for mailing of 6 editions or £6.00 for 12 should be sent to Stan Tompkins, 52 Rabbs Mill House, Chiltern View Road, Uxbridge, Middlesex, UB8 2PD (cheques payable to CAMRA London).

ADVERTISING: Peter Tonge:
Tel: 020-8300 7693.

Printed by Cliffe Enterprise,
Eastbourne, BN22 8TR

Views expressed in this publication are those of their individual authors and are not necessarily endorsed by the Editor or the Campaign for Real Ale Limited.

Advertise in the next
LONDON DRINKER

Our advertising rates are as follows:

Whole page £300 (colour)
£240 (mono)

Half page £180 (colour), £135 (mono)

Quarter page £95 (colour), £70 (mono)

Phone Peter Tonge now on
020 8300 7693

In this issue

Alcohol Disorder Zones	6
News round-up	10
GBBF, Earl's Court	22
Pubs of the Year	25
Pub profile	27
Westerham	30
Letters	35
Young's pubs	36
Branch diaries	38
Capital Pubcheck	41
Membership form	43
Purity	55
Pub design awards	57
Tales from the trade	59
Idle Moments	60
Crossword	62



Down with Initiatives!

According to a two-page article in *New Scientist*, 24 April 2008, there was to be a 'war' on alcohol. Is alcohol a country? With an army? Is it represented at the United Nations? Hardly! This is yet another example of the authorities invoking the rhetoric of violence in aid of their aims. Who remembers that George Bush's reference to a 'crusade' revolted public opinion in the Islamic world, and brought the whole policy into disrepute? For Islam, the 'Crusades' were looting and rapine, and nothing to do with God. Similarly, preaching violence, even if only as a rhetorical device, must alienate any civilised person. Let us leave this sad convention behind, as a relic of twentieth century politics which didn't work then, and is hardly likely to work now.

What is the problem? It is confusing effect with cause - to do a Boris Johnson: arguing 'post hoc ergo propter hoc'. It is not alcohol that is to blame for drunkenness, but drinking too much; not food that causes obesity, but eating too much; not cars that cause road 'accidents' but bad driving. Alcohol, food and cars are not sentient; their users (and abusers) are. What next? A war on food? Or on cars? Of course, we already have both: the government's watchdog proposing Guideline Daily Amounts (GDAs) on dietary limits, without thinking them through; the former Mayor of London's anti-

traffic exercises (although these pale into insignificance compared to Camden's long-standing obsessively anti-motorist policies!)

This thinking is only another symptom, and logical consequence, of the blame culture, and only reinforces antisocial behaviour. So does the refusal to accept that everyone has duties and responsibilities, and the notion that the world owes one a living. It seems as though if someone has something which I do not, it is his fault; and it serves him right if I take it from him. And 'society' is to blame. If I behave irresponsibly, it is society's fault for not teaching me better; but society must respect my rights by not telling me what to do. In this context Margaret Thatcher was right when she said there is no such thing as society.

Can anything be done? Can a change be brought about by the authorities? It has been done successfully in the past. Older readers will remember the television campaign in the 1950s and 60s against spitting in the street. It worked! As did the 'coughs and sneezes spread diseases' one. OK, a new generation has revived the disgusting spitting habit, but you watch: it is obvious to any onlooker that youngsters' spitting is a fashion! As is their irresponsible disposing of bottles and cans in the street. To illustrate this latter assertion: I once saw a youth carefully standing an empty bottle on the pavement, just five feet from a litter bin (say 1.7m,

for younger readers). It would have cost him less effort to bin it, but that would not have shown off how insouciant he was. Show him that it only gains him contempt, and watch the change.

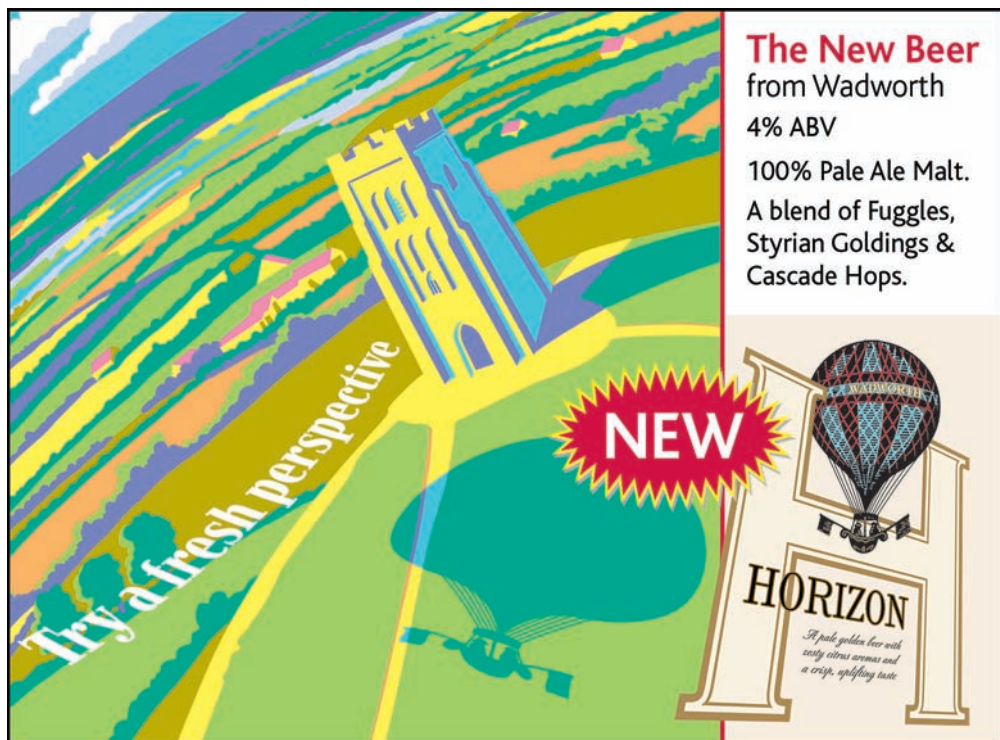
What would work? A campaign to convince people that they are responsible for their own actions; that their self-respect demands that they accept responsibility. Parents and teachers both must learn to bring up their charges to civilised standards. One thing I learned in the army is that if you treat an adult like a bloody fool, he will act like one. Let people drink as much as they wish, but getting drunk is not acceptable; eat as much as they wish, but obesity is not acceptable; drive where and what and when and how they like, but not at other people's peril. They can poison themselves with drugs lawful and unlawful, but cannot excuse themselves from the con-

sequences. They can ruin their own lives, but not others; nor may they expect other people to put the pieces back together. Above all, they can recognise that for every right there is a corresponding duty. Ah, duty: a four-letter word if ever there was one.

The media can help by refraining from glorifying the drugs and drunkenness culture of our (i.e. their) celebrities. Yes, the media create celebrities. According to Boorstin (*The Image*, 1961), 'The celebrity is a person who is known for his well-knownness'. And that 'well-knownness' is manufactured by the media. Those same celebrities' managers and promoters could also play a part - if that didn't impinge on their incomes! Where I was brought up, in a small, ordinary market town the man, and it was a man, who made a habit of drinking too much was looked down on: 'Oh, him, he

can't hold his drink!' - said with pity and/or contempt. My contemporaries and I absorbed this way of thinking from the example of our elders: there was no 'message'; no 'initiative'. It just **was**.

What has not worked? War! Targets! Government 'initiatives'! Nagging and nannying! 'Sending a message'! Lies! Yes, governments and their agencies believe that they are entitled to lie to us if they think it is for our own good; and they think we are so stupid that we will not recognise their lies for what they are. And the result of these lies: we do see them for what they are and we lose our respect for the authorities. Even when they tell us the truth, we doubt it. (Are children still taught the story of the boy who cried "Wolf"; were our lords and masters taught it?) In the watchword of a certain newspaper: "Comment is free;



Try a fresh perspective

NEW

The New Beer
from Wadworth
4% ABV
100% Pale Ale Malt.
A blend of Fuggles,
Styrian Goldings &
Cascade Hops.

HORIZON
*A pale golden beer with
sassy citrus aromas and
a crisp, uplifting taste.*

Mere words can not describe!



The Churchill Arms, Kensington Church Street, London W8 t: 020 7727 4242

facts are sacred" (C.P.Scott, 5 May 1921, in the *Manchester Guardian*).

Our government seems to believe that it is better to be seen to do something now, than to take enough time to work out what will actually work and then do that. There is an alternative, as recently proposed in *New Scientist*: this time the 23rd May edition. It had a four page article suggesting that all government initiatives be subject to controlled, randomised testing and that the results of these tests determine whether the policy be adopted. This will do far more good than the prevalent government attitudes that something must be true because we want it to be, and that 'we must do it because it is our policy'. These attitudes must be recognised as a substitute for thought and for taking responsibility. They must

play no further part in running the country.

An aside on 'sending a message': when I worked in telecommunications, it was not enough to send the message. It was my job to see that it arrived, and that the addressee received it. Broadcasting it was not enough. We didn't just put the messages in bottles and throw them into the sea! Does our government check that its messages arrive? Or are understood? Or are acted on? I see no evidence of it; quite the opposite: just more bottles.

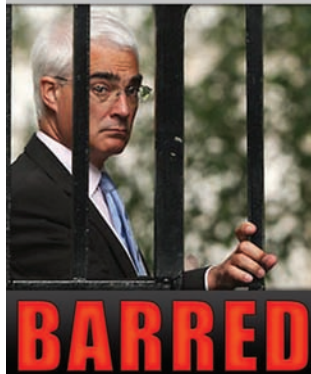
Am I an angry old man? Old, and a man, yes. Angry? More frustrated by the incompetence of those whose salaries I must pay. If only the Advertising Standards Authority had authority over government and quango propaganda, including party manifestoes. If only the Government Chief Scientist and the Head of

the Office of National Statistics were required to write an annual report on the Government's abuse and misrepresentation of knowledge and of available facts.

©Richard Larkin, 2008



We hereby give notice that Alistair Darling, Chancellor of the Exchequer, is barred from this pub until further notice.



Trafalgar Freehouse

23 High Path, Merton, SW19 2JY
(020) 8542 5342 - trafalgar@thetraf.com

SWL
CAMRA
Pub of
the Year

Visit our website...

www.thetraf.com

for details of upcoming events.

"A Truly
Excellent
Back Street
Local"

Live Jazz

Every Sunday
2.30pm to 5.30pm



"I'M ONLY HERE FOR THE BEER."



THE 2ND ASCOT RACECOURSE BEER FESTIVAL

Friday 26th and Saturday 27th September 2008

- Exclusive HALF PRICE admission for CAMRA members - prices from just £5 on Friday and £7.50 on Saturday.
- Excellent programme of racing.
- Over 130 real ales, ciders and perries to sample with tasting notes. All at £1.25 per half pint and £2.50 per pint.
- Hot and cold food available all day.
- Gates and Bars open at 11am. Last orders 4.15pm on Friday and 5.45pm on Saturday.
- Live music on both days.
- Free parking or a 7 minute walk from Ascot Railway Station.



To book tickets, call **0870 727 1234** or visit **ascot.co.uk**
quoting CAMRA08.

Ascot 
The World's Most Famous Racecourse

Alcohol Disorder Zones

The regulations for establishing Alcohol Disorder Zones have been approved by Parliament. Local Authorities can now, if they choose, charge licensed premises with the cost of policing alcohol-related nuisance and disorder in designated town and city centres. Supermarkets and convenience stores will be able to escape the charge owing to a 'principal use' test.

The zones could see licensed premises paying a weekly charge, assessed in relation to their rateable value. Larger community pubs could be faced with charges of £100 a week or more.

Any CAMRA branch faced with the introduction of an Alcohol Disorder Zone in their area has been encouraged to seek support from CAMRA's national headquarters. There are strong arguments against having these zones.

Launching an Alcohol Disorder Zone will blight the reputation of an area, thus driving away

responsible drinkers and leading to worsening disorder.

Introducing the zones is hugely bureaucratic and any Local Authority attempting to do so will face the threat of legal action from multiple sources.

The 'principal use' test will allow much of the off trade to escape the charge.

Responsible licensees will be treated exactly the same as irresponsible licensees.

The zones will threaten the future of community pubs owing to increased costs and a falling trade as responsible drinkers are deterred by the negative publicity.

The zones are likely to lead to resentment towards the Police and the Local Authority, which will undermine co-operation within the community.

Advertise in the next LONDON DRINKER. Our advertising rates are as follows:

Whole page £300 (colour), £240 (mono); Half page £180 (colour), £135 (mono)

Quarter page £95 (colour), £70 (mono). Phone Peter Tonge now on 020 8300 7693

THE FINAL COPY DATE FOR ADVERTISING IN OUR NEXT ISSUE (OCTOBER/NOVEMBER) IS THE FIRST OF SEPTEMBER

THE HORSESHOE



- Monday nights - Mongolian Karaoke with menu to match
- Serious darts played here
- Regular quizzes on Thursdays
- Special 60s soul night every 2 months
- First Sunday of every month - traditional English folk jam session

We are a traditional pub in Southwark, nestling in the shadow of Guy's Hospital and just a few minutes walk from London Bridge.

Apart from our cosy bars we've got a roof garden, patio area and function room.

Brakspear's is always on draught together with either London Pride or Bombardier PLUS ALWAYS a seasonal beer changing through the week.

Our extensive bar menu is available all day every day from sandwiches to mains.

Visit our website www.horseshoepubse1.co.uk



26 MELIOR STREET, OFF ST THOMAS'S STREET, LONDON SE1 TEL: 020 7403 6364



Wed 24th - Sat 27th September
ALBAN ARENA THE ALBAN ARENA ST ALBANS

OVER 300 REAL ALES plus CIDERS, PERRIES & FOREIGN BEERS



Wednesday 24th	5.00pm - 10.30pm	£2.50	
Thursday 25th	11.00am - 10.30pm	£2.50	(£2.00 before 4.00pm)
Friday 26th	11.00am - 10.30pm	£3.00	(£2.00 before 4.00pm)
Saturday 27th	11.00am - 10.30pm	£4.00	(£2.00 before 4.00pm)



Beer with the Feelgood Factor ! Sat. Sept. 27th Dr FEELGOOD

CAMRA MEMBERS FREE EVERY DAY, ANY TIME. NO ONE UNDER THE AGE OF 18 CAN BE ADMITTED
www.stalbansbeerfestival.com Box office 01727 844488 Contact: realales@yahoo.com

"When I read about the evils of drinking, I gave up reading." Henny Youngman – but not until you have read my column, please...

New trade campaign

One of the most significant developments in the pub trade in the last 20 years has been the demise of the pub-owning 'vertically integrated' brewery and the growth of the pub-owning company or 'pubco'. Whatever we drinkers might feel about them, pubco tenants have had very mixed experiences. Now certain prominent figures in the pub trade have formed a campaign called Fair Pint which seeks to reduce the power of pubcos and make them treat tenants better by making the voluntary recommendations of the 2004 Parliamentary Trade and Industry Select Committee mandatory. It also wants the tie removed from all pubs, except those owned by brewers with fewer than 500 sites. The man who is reported to be funding the campaign, Vince Power, former owner of the Mean Fiddler music group, said, *"either beer should be cheaper for licensees, or the rent should"*.

Fair Pint's first moves are to meet with the all-party Beer Group and the Department for Business, Enterprise and Regulatory Reform (and how many of you knew that we had one of them?). The reaction from the pubcos has been cautious. The Chief Executive of Enterprise Inns said, *"It is important to see this as a review of TISC rather than a new enquiry"* and Punch Taverns said, *"This will give us the opportunity to demonstrate how Punch has positively acted in respect of the original committee report and will reinforce our commitment to safeguard the future of the great British pub"*. That sounds to me like the politician's old defensive chestnut 'I'm glad that you asked me that question'.

I suspect that Fair Pint would not be interested in CAMRA's

views as we are consumers and not 'trade' but, given that the pub and real ale are so interdependent, what they do must be of interest to real ale consumers and vice versa. After all, CAMRA now has over 90,000 members, 10% of who are under 30, and chief executive Mike Benner was listed in the *Morning Advertiser* recently as being number 42 in the list of the pub trade's most influential people.

Perhaps the pubcos should take a look at the way that independent family brewer, Batemans do business. They have been praised for their 'Eyes Wide Open' code which governs their dealings with their tenants. Their aim is to make all dealings honest and transparent and they also acknowledge tenants' efforts by paying them when they leave a pub for the goodwill that they created in their time there. Batemans look for a return-on-capital rate of 12% whereas most pubcos look for at least 20%. When the code was introduced two years ago, Batemans had 15 vacant pubs in its 70-strong estate. Now it has just two. Perhaps the Batemans are just nice people – see 'And finally...' below.

St Louis booze

On the international front, the big news is the take-over by InBev of Anheuser-Busch, the manufacturers of Budweiser. Firstly, does it really matter to UK real ale drinkers? Here I am inclined to agree with Roger Protz that the prospect of an even more powerful InBev is not an attractive one. Roger commented in the *Morning Advertiser* that he never thought that he would wish A-B success in its struggle to remain free from takeover or merger, but better the devil you know...

Patriotic American drinkers were up in arms about this and A-B proudly proclaimed their wish to stay independent having put together a top defence team,

hired investment banks to fend off the takeover and started talks to merge with the Mexican brewers Grupo Modelo as protection. A-B's defence plan also included a cost-cutting exercise intended to cut \$1 billion off of its production costs and employee pension benefits. They refused InBev's third formal offer of \$46 billion (£24 billion) and it turned nasty when in return, InBev applied to US Securities and Exchange Commission to replace all of A-B's existing directors with its own nominees on the grounds that the existing ones only represent 4% of the shareholding.

Although still presided over by August Busch IV, Anheuser-Busch were no longer an independent family-owned concern. Perhaps they should have stayed that way although one of InBev's main supporters was a family board member, Adolphus Busch IV. Not unlike the Scottish & Newcastle and Carlsberg/ Heineken saga, there were suggestions that despite all the bluster, the right offer would succeed and indeed it did when it was upped to £26 billion. It seems that, in this business at least, everybody does have their price.

Curiously, one company who wanted to "lend fraternal support to another iconic brewer" was none other than Czech Brewers, Budweiser Budvar. Despite their 100-year long trademark dispute, their UK chief executive said that he intended to sign the on-line petition to save this great all-American institution from falling into foreign hands. Then again, I don't suppose that BB want a new round of court cases with InBev's lawyers.

Something that InBev's directors can look to is playing with A-B's private air force of eight Dassault Falcon executive jets worth \$41 billion plus two Bell helicopters and a hot air balloon.

Final thought; according to an

WYCHWOOD BREWERY

HOBGOBLIN



AFRAID YOU MIGHT
TASTE SOMETHING
LAGERBOY?

article in the *Economist* on the takeover: "Sales of mass-market beers have been weak of late, as microbreweries and premium beers have taken market share, which bodes well for InBev's European lagers". What does 'premium' actually mean then? Our Editor, Mr Strawbridge, suggests that it may refer more to the amount of money spent advertising the brand rather than the quality of the product itself.

Law and order

An interesting contrast here; I have commented several times in this column and in editorials that the authorities were not using the powers given to them under the Licensing Act, in favour of blanket measures. Full credit then to the police in Sidcup who suspended the licence of the particular bar at the centre of one of the recent epidemic of knife murders for seven days and only permitted its

reopening with stringent new conditions, including metal detector checks.

That said, the Borough Council concerned, Bexley, has upset many of its local licensees with its 'Challenge 21' scheme. Under this, all licensees are being urged to sign an 'Acceptable Behaviour Contract' covering the 'responsible retailing of alcohol', in particular under-age drinking. The British Beer and Pub Association have urged members to ignore the move because, as they said in a letter to the Council's Licensing Department, it is "*in direct contradiction with (sic) both the letter and the spirit*" (of the Licensing Act) and "*is going beyond what the law requires*". I agree; why in any circumstances do you need to have people sign a contract to obey the law and where is the fairness in treating pubs like, for example, long-time Bexley Pub of the Year winner, the Robin Hood and

Little John, in the same way as the bar mentioned above?

With under-age drinking control in mind, the Guild of Master Vintners has stepped into the National Identity Card debate. They have written to the Home Office saying that they are in favour of the carrying of ID cards being compulsory. Avoiding the employment of illegal workers was another reason given. The GMV want the Government to consult more widely in the licensed trade.

One bit of good news: there will be no blanket glass bans in pubs. This was the message sent to everyone who signed the *Morning Advertiser's* petition. The Home Office's Expert Group on Glassware (bet you didn't know that we had one of those either) instead "*aims to achieve a workable solution to address the industry's concerns*". Preferable to trying to enforce an unworkable one, I suppose.

THE ELEANOR ARMS, BOW



The Eleanor is a traditional pub sticking to the traditions of good hospitality. A seafood spread is served on Sunday afternoons and during winter we have a warm, welcoming fire. The pub is only two minutes walk from the Gunmakers Gate of Victoria Park, London's second biggest park, and the Hertford Union Canal. Walkers are always welcome to pop in, relax and quench their thirst.

A traditional Shepherd Neame pub. Why not call in, Frankie and Lesley extend a warm welcome.

- ◇ Secluded garden
- ◇ Smoking facilities
- ◇ Disabled-friendly
- ◇ Traditional pub games including pool, darts and shove ha'penny



460 OLD FORD ROAD, BOW, LONDON E3 5JP TEL: 020 8980 6992



The **BOTTLE** *of* **BRITAIN**

www.spitfireale.co.uk

Smoking ban

I thought that this issue was going to die out but perhaps not. A survey commissioned by the *Publican* has found that although more than half of the 1,500 licensees surveyed said that their pubs have lost trade in the last year, the majority of them would not want to go back to allowing smoking in their pub and they put the blame for the continuing poor trade on the increases in Duty and the 'credit crunch'.

Curiously though, according to *BBC London News*, this does not apply to London. They reported that 73% of licensees said they would overturn the ban if they could. The survey however found 78% of drinkers were pleased about the smoking ban and 71% felt pubs were better places to visit as a result.

Perhaps going too far is a petition launched on the 10 Downing

Street website recently calling for smoking to be banned from beer gardens. The petition reads: *"Why should non-smokers sit in a beer garden with loads of smokers? I propose that at least half of all beer gardens be made non-smoking"*. There is however another petition asking for the introduction of 'smoking licences' for pubs. The latter had 4,048 names on it at the last count, as opposed to just 21 for the beer gardens petition.

News from Fuller's

Fuller's have reported a 4% increase in pre-tax profits to £23 million, although it was the comments made by Chairman Michael Turner that made the headlines. Fullers operate 363 pubs and own the freehold of 90% of them. Two-thirds of the pubs are tenanted. Mr Turner said, *"We have always said that it is in the interests of shareholders to own the freeholds wherever possi-*

ble". He had some very interesting comments to make about what he sees as short-term thinking in the trade and the current fad for REITs (real estate investment trusts). More of that below. Mr Turner also made an interesting contribution to the 'premium' issue (see above) in saying, *"Those brands that are heavily discounted in supermarkets but then want to be premium in pubs have a serious problem"*.

Fuller's have struck a deal with the Ossett Brewery from West Yorkshire. Ossett's ten pubs will serve a Fuller's beer as a regular guest, replacing Timothy Taylors, and Ossett beers will have two of Fuller's guest beer slots.

News from Young's

Whilst some may not like what Young's are doing with their pubs, others obviously do and are demonstrating it with their cash. In the year ended 29



- Up to 5 quality cask-conditioned ales on hand-pump
- Guest ciders on hand-pump
- A selection of bottled ales and lagers from around the world
- Traditional food cooked by the landlady using locally-sourced ingredients



the bull
at horton kirby

lombard street, horton kirby
dartford da4 9df
tel: 01322 862274
web: www.thebullpub.co.uk

CAMRA Gravesend & Darent Valley Branch Pub of the year 2008 !!

Belgian Beer Festival

At The White Horse on Parsons Green

Friday 22nd August – Monday 25th August



- * Over 50 Bottled Beers from Belgium
- * Belgian Cask Ale
- * Belgian Style Cask Ale Brewed by Ascot Ales & The White Horse
- * Over 20 Belgian Draught Beers
- * BBQ and Hog Roast
- * Chimay Cheese Plates
- * Mussels and Chips

Information: 0207 7362115

**1-3 Parsons Green
London
SW6 4UL
www.whitehorsesw6.com**



March, Young's revenue was up 6.6% to £122 million. Although like-for-like sales fell 2%, food sales increased by 16% and food now accounts for 25.4% of revenue. The dividend rises 34% to 12.5p. So far, of the £46.6 million raised by selling the Wandsworth Ram Brewery site, Young's have spent £36 million of it on buying and refurbishing pubs.

Around the pubs

More inventive diversification: the GBG-listed Dartmouth Arms in NW5 now has a hair-dresser visit once a week. Nearby in Camden Town, the opening of Gordon Ramsey's new pub, his fourth, the York and Albany, has been put back to the autumn. This is to allow for redecorating to be carried out, particularly to the ten letting bedrooms. The pub will also have a delicatessen: more diversification.

The Anchor at Bankside is reopening after a £1.6 million refurbishment by Spirit Group. A new feature will be a fish and chip counter where customers can queue as if it were a traditional chippie and either eat in the pub or take their meal away. The site's coffee machine is being upgraded too!

The Intrepid Fox in Soho, once thought to be under threat of redevelopment, is available for lease as a pub again. The rent would be around £200,000 per annum. The pub is not listed but it is in a conservation area.

Charles Wells have sold two London pubs, the King of Denmark in Islington and the Marquis of Anglesey in Paddington, to Allied Capital. Both pubs are still trading but the new owners plan mixed-use developments on the sites in due course.

News from the trade

The Mitchells & Butlers saga continues. In another share deal, Robert Tchenguiz has increased the holding in the company under his control to 29.77% and has been able to put two of his lieutenants on the board. They will act as non-executive directors advising on property matters. Elpida investments, run by Irish tycoons John Magnier and JP McManus of racehorse fame, have also increased their stake to 8.08%. Despite all that has happened, the aim still appears to be conversion to a REIT. British Land, one of the country's biggest property groups, recently reported a loss of £1.61 billion for 2007 as against profits of 1.3 billion the year before. Quite why pubcos want to play this market, especially ones who have already had their fingers burnt, I just do not know.

Bi-Annual Beer Festival



August Bank Holiday Weekend

23rd - 25th August

Live Music Sunday 24th August

David Bruce has stepped down as chief executive of the Capital Pub Company. His business partner, Clive Watson, will succeed him. There is nothing to read into this. The company saw an increase in revenue of 32% to £18.8 million over the year ended 29 March. Mr Bruce said that he wants to focus on his non-executive directorships and his new farm shops enterprise. Then again, given his track record, who knows what Mr Bruce might get up to.

A report in the *Sunday Times* says that JD Wetherspoon chairman Tim Martin has bought another £700,000 worth of shares in his pub group recently, giving him around 24% of the company. I have no idea whether or not it is his intention but at this rate, it will not be long before Mr Martin will be in a position to take JDW back into private ownership.

The Laurel Pub Company is selling 94 of its leasehold sites, mostly from its Yates's, Hog's Head, Litten Tree and Bar Med operations. 22 of them are already closed. It is not all bad news however. Laurel have signed a deal with Wells & Young's Brewery Company to put Wells Bombardier in all of its real ale outlets with selected pubs having other beers such as Young's Ordinary and Courage Directors. W&YBC will be providing cask ale training, marketing support and advice.

According to the *Financial Times*, Marston's could spend up to £180m on acquisitions to bolster its pub estate or brewing operations. Chief executive Ralph Findlay said valuations looked more favourable than 'a year or so ago'. One possibility might be Regent Inns which, according to the *Times*, has revealed that it is currently con-

sidering a number of possible takeover bids. The Walkabout and Jongleurs chain has experienced a fall in like-for-like sales of nearly 11% in the 19 weeks ended 14 May, mostly in the Walkabout outlets.

Greene King increased its revenue by 5% to £960 million over the year ended 4 May with profits rising 2% to £142 million and its dividend up 14% to 26p. Chief executive Rooney Anand said, "*Given the costs that we had to absorb, I think we can be pleased*". Err, do you think that the customers might have made some contribution as well?

However, at the same time, GK have announced that they will be selling off more than 80 of their smaller tenanted and leased pubs, hoping to raise £30 million. Apparently they are not interested in pubs with a throughput of less than 100 barrels per annum. A trade insider was quoted in the

ALDBOROUGH HALL FARM BEER FESTIVAL

Craft/Antiques Fayre and Farmers Market
28th-31st August 2008

*Up to 50 Real Ales, Ciders and Perries
Essex Wines*

Hot and cold food, pub games and entertainment

See website for details and CAMRA members offer
www.aldboroughrealale.co.uk or call 01245 422113

Free car parking. Camping facilities available - please book to avoid disappointment.
Courtesy mini-bus service from Newbury Park Station on the Central Line

Thursday 28th - Beer Festival 5-11pm

Friday 29th - Beer Festival 11am-11pm

Saturday 30th - Beer Festival & Farmers Market 11am-11pm

Sunday 31st - Beer Festival & Craft/Antiques Fayre 11am-6pm

ALDBOROUGH HALL FARM, ALDBOROUGH ROAD NORTH, ILFORD, ESSEX IG2 7TD

The Star

17 Church Street
Godalming, Surrey

**For a little pub we're making a big impression
We're now the CAMRA Surrey & Sussex Cider Pub of the Year 2008**



We have a unique 'INSIDE-OUTSIDE' room, ideal in the summer for a cool drink. It is also available for private or corporate hire.



About the Star

The Star Inn has existed for over 175 years and is a quaint old pub in Godalming's quaintest old street. Open 7 days a week we serve traditional pub food every day including our famous home-made 'Starburgers' and Cumberland sausages from our local Cumberland butcher!



Our delightful 'suntrap' garden with heated canopy offers refuge to many a stranded smoker. You can relax here in comfort throughout the year.

VISIT OUR WEBSITE www.thestargodalming.co.uk

The Star

Tel: 01483 417717

**Our wide range of real ale and ciders has ensured our entry into
CAMRA's Good Beer Guide**



Cider's BIG in The Star. Choose from 6 draught ciders, 4-6 scrumpies and perries at any time as well as over 36 bottled British and French ciders. If you don't like cider, perhaps British apple brandy might satisfy an urge!



As you may have guessed by now, we also have an extensive selection of Belgian bottled beers including Duvel, Hoegaarden, Chimay, Leffe, Bellevue Kriek, Christoffel etc.

About the drinks

We offer an ever-changing selection of real ales from around the country - there's a choice of 6 to 8 available at any time.

We also present both Easter and Halloween Festivals as well as our traditional Christmas Selection. Last year we quaffed 37 different Christmas ales in 4 festive weeks!



Not only do we sell the ales but we also take our customers to the breweries. In the last 12 months we've visited Hogs Back, Surrey Hills, Triple fff, Itchen Valley, Ringwood, Dark Star and Harveys.

***For fear of being early,
prepare yourselves for our
'Black Country' Halloween
Beer Festival. Starts Friday
31st of October.***

Publican as saying that most of the pubs, although small, were attractive and in good order and that there are "some nice pubs in there".

This sale may not be entirely unconnected with the report that GK is sounding out major City investors about following Enterprise Inns in converting to a REIT, especially as Enterprise's share price shot up by 115p to 510p after their announcement. Normally, converting to a REIT would involve splitting the company into separate arms, a property company and an operating company, but HM Revenue & Customs have advised that this will not be necessary in GK's case.

A new pub company, Urban Inns, is looking to acquire some 20 sites in the next few years, starting with joint operations with Enterprise and Young's respectively at the Old Ship in Hackney and the Coach & Horses in Isleworth. The company, set up by entrepreneurs David Catling and Don MacIntyre, is setting out to 'recreate the traditional inn experience, with a modern twist'. Catling, an ex-Rank executive said, "*We're modernising the traditional British inn experience - our sites will not be gastropubs or boutique hotels.*"

Adnams' eco-friendly beer East Green is now being made available in cask form following its success as a bottled brand. Adnams claim that the cask version is even more environmentally friendly because it does not involve bottles – a fair point.

The Norfolk fruit wine maker Broadland Wineries is to launch a new range of 'bag in box' perries under the brand name Belgars. The 7.5% perries (a medium dry and medium sweet) will be made on-site in Norfolk, using natural yeasts and flavours, and will be available in three-litre fridge-ready boxes. The company says that the product has been developed specifically for the BBQ and summer market and consumers

are encourage to enjoy it over ice. I wish that they had not added that bit.

Scottish & Newcastle have had the Newcastle Brown Ale Brewery building spectacularly demolished with explosives. The building, which dated from 1927, will be replaced by a Science City.

More news from abroad

Shares in SABMiller rose 7% following speculation that if InBev's bid for Anheuser-Busch fails, InBev will make a bid for them. Meanwhile, InBev have announced a 4% ABV version of Stella Artois. This, apparently, will become their 'flagship' lager, with the 5.2% version '*remarketed as a super-strength extension*'. Ah! Could this be what premium means?

Heineken is planning to introduce oversize glasses as part of a plan to relaunch its lagers by serving them with a big head in the 'Continental' way. Their UK sales director said, "*We want to bring pride and passion into serving lager*" whilst their marketing controller said that the issue of yields being lower (which I assume means the loss incurred by serving a full pint) had to be weighed against the fact that "*customers will pay a premium price for a premium product*". Ah! That word again...

The move has been welcomed by CAMRA because, whatever it is a pint of, a full pint is a full pint.

And finally...

Does anyone recall the Everest Double Glazing TV advert that featured England's highest pub, the Tan Hill Inn in

Swaledale? A new version has been produced and Everest have spent £90,000 on improvements to the pub including windows, solar water-heating and a boiler. Unfortunately, no-one thought to apply for planning permission and the oversight was spotted by Richmondshire District Council. The Council says that the case will be looked at like any other, but it is unlikely that they will insist on demolition.

A final thought on 'premium'; Fosters has created a limited edition beer called Crown Ambassador Reserve lager. The beer sells in 750ml bottles at \$60 Australian which works out (I think) about £20 per pint. Fosters' master brewer John Cozens said: "*It is expensive to make and it is expensive to package but it is Australian, it is luxury and let us hope there is more to come*". No, let us not.

And talking of Australia, how could I resist this? Somewhere near Alice Springs, a policeman stopped an unregistered car and was shocked to find a 30-can pack of beer safely strapped into a seat whilst a 5 year old child bounced about loose. The driver was fined the equivalent of £360.00 – or half a crate of Fosters' new beer.

To end, a nice quote: writing in the company paper, the *Windmill Times*, Bateman's managing director Stuart Bateman commented; "Already half-way through the year. Does it go quicker as you get older, fatter and balder? If so, next year should take about a fortnight". Stuart, I understand...

Tony Hedger

Advertise in the next LONDON DRINKER.

Our advertising rates are as follows:

Whole page £300 (colour), £240 (mono)

Half page £180 (colour), £135 (mono)

Quarter page £95 (colour), £70 (mono)

Phone Peter Tonge now on 020 8300 7693

THE FINAL COPY DATE FOR ADVERTISING IN OUR NEXT ISSUE
(OCTOBER/NOVEMBER) IS THE FIRST OF SEPTEMBER



THE SWAN TAVERN

"A delightful marble topped ale bar" – TIME OUT

77 Gracechurch Street, EC3

a FULL RANGE of FULLERS CASK and BOTTLED ALES
and a CONSTANTLY ROTATING GUEST ALE



THE BELL

"The oldest small pub in the City of London" – TIME OUT

29 Bush Lane, EC4

FIVE CASK ALES always AVAILABLE including
DEUCHARS IPA, SPITFIRE, YOUNG'S BITTER, COURAGE BEST
and a ROTATING GUEST BEER



LONDON BRIDGE



THE WHEATSHEAF

"Boasts the best atmosphere of any of the Borough Market pubs"

6 Stoney Street, SE1

a FULL RANGE of YOUNG'S CASK and BOTTLED ALE
and the OCCASIONAL GUEST BEER

WINNER of the 2004–05 YOUNG'S BEER QUALITY
and CELLAR MANAGEMENT COMPETITION
– TIME OUT

DON'T FORGET OUR LATEST...

THE CASTLE

Furnival Street EC4

a huge range of rotating guest
beers from microbreweries



RED CAR PUBS

EARL'S COURT, TUESDAY 5 – SATURDAY 9 AUGUST

You will find over 500 draught bitters, milds, stouts, porters, golden ales and wheat beers as well as bottle-conditioned beers, ciders and perries and traditional foreign beers at the Great British Beer Festival at Earl's Court.

There will also be food, live music and other entertainment, games, tombolas, and quizzes. Why not catch up and socialise with friends, unwind after work,

or just soak up the friendly festival atmosphere! Other features include

Family Room – all those under the age of 18 must remain in the Family Room throughout the festival and must be supervised by a family member.

Hat Day – Thursday 6 August. As usual we will be asking people to wear their silly hats on Thursday. So whether you have got one in the cupboard, or even better make one for the day, make sure you remember those hats! The best hats will win prizes.

Opening times are Tuesday 5-10.30; Wednesday, Thursday and Friday 12-10.30; Saturday 11-7.

Tickets can be bought in advance on www.gbbf.org for a £2 discount.

Admission: Daily £8 (CAMRA members £6), Season Ticket £23 (CAMRA members £20)

For more information please visit www.gbbf.org

**GREAT BRITISH
BEER FESTIVAL**

5th - 9th August 2008
Earls Court, London



Enjoy Hampshire's premier real ale whenever you want! We are now delivering into Greater & Central London at least twice a week, for latest promotions on our core and seasonal ranges call us today...

Itchen Valley Brewery Limited

Prospect Commercial Park, Prospect Road, New Alresford, Hampshire, SO24 9QF

Tel 01902 735111 Fax 01902 735678

Email info@itchenvalley.com Web www.itchenvalley.com

Great Beers * Real Service * Happy People *

De Olde Mitre

Ely Court, between
Ely Place and
Hatton Garden,
London EC1N 6SJ
020 7405 4751



CAMRA GOOD BEER GUIDE 2008
East London & City Pub of the Year 2008

Historic and traditional Ale-House

*Adnams Bitter and Broadside and
Deuchars IPA always available together
with other guest beers.*

**Open for the GBBF weekend Sat 9th
& Sun 10th August 12-5pm**
**Guest Scottish Ales for the whole week
4th-10th August**

Open 11-11pm Monday to Friday
(try our famous toasts)
Nearest tubes: Chancery Lane/Farringdon

LONDON HERITAGE PUBS

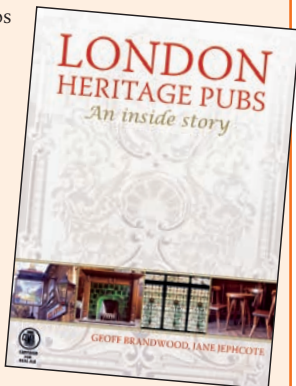
CAMRA's new, definitive guide to London's historic pubs, went on sale on 8 July, replacing the previous 'London Regional Inventory' publication. *London Heritage Pubs - An Inside Story* features 150 of the oldest, most distinctive and renowned pubs in the capital that are still thriving today.

The product of over seven years' research by co-authors Geoff Brandwood and Jane Jephcote, the book is divided into seven sections, progressing through the Greater London postal districts. While explaining the historical context and layout of each individual pub, the book also raises issues surrounding the sustainability of the public house and its changing face in the twenty-first century. There are also features about the evolution of London pubs, what's distinctive about them, historic brewing in the capital, and London beer styles.

Geoff Brandwood said, *'With all the bad press surrounding pub closures and the increase on beer tax, we do still have many marvellous, genuine historic pubs in the capital and it's great to see them making something of their heritage and offering value within the community. There's been so much drastic change to our traditional pubs in recent decades it's important to preserve what we have left. The pubs in this book are all part of our national heritage and a great, unique British institution. Enjoy!'*

It may be a tall order for pub lovers to visit all 150 pubs but the authors have therefore highlighted the following 'ten pubs not to miss':

Cittie of Yorke,
Holborn
Olde Cheshire
Cheese, Holborn
Princess Louise,
Holborn
Black Friar,
Blackfriars
Red Lion,
St James's
Falcon, Battersea
Forester, Ealing
Prince Alfred,
Maida Vale
Salisbury, Harringay
Eastbrook, Dagenham



London Heritage Pubs - An Inside Story can be bought in all good book shops or ordered online at www.camra.org.uk/shop, priced £14.99 (£12.99 for CAMRA Members).



R.A.F.A. KENLEY & CATERHAM
661 BRANCH 2008

Commemorating the 90th Anniversary of the RAF at the historic former RAF Kenley Battle of Britain airfield.

**Great beer selection,
many from local breweries,
plus a range of ciders.**

Brewed specially for us by the Pilgrim Brewery, Reigate, will be

'615' Hurricane Squadron
- a golden, hoppy 6° bitter

DEFIANT
- a dark 4° ale

A selection of specially prepared
hot & cold food will be available
at all times during the festival.

FREE shuttle transport to and from
Whyteleafe & Upper Warmingham
rail stations - leave the car at home and let the
Southern train take the strain.

A display of historic WW2 military vehicles by
the Invicta Military Vehicle Preservation Society.

FRIDAY 5th SEPTEMBER 11am - 11pm
SATURDAY 6th SEPTEMBER 11am - 11pm
SUNDAY 7th SEPTEMBER 12noon - 11pm

For more information www.kenleybeerfestival.co.uk

Admission £5 or £4 for CAMRA members

For advanced tickets send SAE & cheque made payable to
'Brian Seddon', 113a Buxton Lane, Caterham, Surrey CR3 5HN

Pictures courtesy of www.deroeck.co.uk

2008 WALLINGTON BEER FESTIVAL

Thursday 9th to
Saturday 11th
October
Wallington Hall
Stafford Road
Wallington
Surrey



A genuine Free House featuring a selection of the very best in Cask Ales, Traditional Cider and Perry

- Mild always available
- Liefmans Kriek on draught
- Wide selection of continental bottled beer including Duvel and Chimay
- Function room free to CAMRA members
- Thursday night is Quiz Night
- Jazz piano Sunday afternoons
- Jazz/Blues every Friday and Saturday evening
- Open daily from midday



**CAMRA
NORTH LONDON
PUB OF THE YEAR
1995, 1996,
THE MILLENNIUM 2000
AND 2004**

**26 Wenlock Road
London N1**

020 7608 3406

Nearest Tube stations are Old Street (exit 1) and Angel. Wenlock Road is off City Road via Windsor Terrace
<http://www.wenlock-arms.co.uk/>

THE TENTH TWICKENHAM BEER & CIDER FESTIVAL



from the Richmond & Hounslow
Branch of CAMRA

(Around 70 draught beers plus ciders, perries and foreign bottled beers)

at YORK HOUSE

Richmond Road, Twickenham, TW1 3AA

5 minutes from Twickenham Station

Bus Routes 110, 267, 281 and 290 to Twickenham King Street

Bus Routes 33, 490, H22, R68, R70 pass the entrance to York House

Opening Times

Thursday 23rd October	-	5.00pm to 10.30pm
Friday 24th October	-	11.00am to 10.30pm
Saturday 25th October	-	11.00am to 10.30pm

Admission £1.50 (£1.00 Friday lunchtime)

CAMRA members 50p (FREE Friday lunchtime)

www.rhcamra.org.uk

Families welcome until 6.30 p.m. Friday and Saturday

PUB OF THE YEAR AWARD FOR THE BLYTHE HILL TAVERN

A fiercely traditional pub has received the award of 2008 Pub of the Year from the South East London branch of CAMRA. The Blythe Hill Tavern, 319 Stanstead Road, Forest



Hill SE23, received the award from branch chairman Alan Jepson. *"At a time when many pubs are being converted into flats or restaurant-style gastro-pubs",* said Alan, *"the Blythe Hill Tavern stands proud as an example of how a pub should be: traditional, no-nonsense, no fancy food and three separate rooms. A place where people come for good*

conversation and a drink. To put it simply, there aren't many places like the Blythe Hill left. A rarity in London."

The pub is included in CAMRA's Regional Inventory for London, which lists pubs that have interiors of special historic interest. The special features of the Blythe Hill, a purpose-built late Victorian corner pub, include its 1920s woodwork details and the fact that it has resisted the trend to knock down partitions to create one large soulless room.

Additionally, the Blythe Hill Tavern is keeping alive the tradition of live Irish music in bars, with a regular and well attended session of fine musicians every Thursday.

The pub is to be praised for offering a range of four real ales, including one from Westerham, a local Kent brewery. It won the award against some very strong competition that included the Jolly Woodman in Beckenham, the Ramblers Rest (Chislehurst) and Hooper's Bar (Camberwell).

Congratulations on an excellent achievement go to licensee Con Riordan, who has been running the pub for a remarkable 20 years, and manager Terry MacSweeney.

Neil Pettigrew

CROYDON & SUTTON PUB AWARDS

Croydon & Sutton CAMRA has made its annual Pub of the Year presentations to award winners in each borough. The Croydon award was to the Green Dragon in High Street Croydon, a thriving town centre pub offering music, comedy, other events and food in addition to beer both on handpump and gravity. It has also hosted two beer festivals in the last year.



The Sutton award went to the Windsor Castle in Carshalton, which also offers good food, music, quizzes and a range of real ales. Unfortunately you have just missed its long established May Beer Festival for this year!

Pictures show branch chair David Lands making the awards to Esther at the Green Dragon and Pam at the Windsor Castle.



**FORMER PUB OF THE YEAR, CAMRA SW LONDON
2002 GREATER LONDON REGIONAL PUB OF THE YEAR
VOTED TIME OUT PUB OF THE YEAR 2004**

The Sultan

78 Norman Road, South Wimbledon, SW19 020 8544 9323
(off Haydons Road via De Burgh Road)

The only Hop Back pub in London

Annual Beer Festival

**Friday and Saturday
3rd and 4th October**

A selection of beers from around the country
plus a full range of Hop Back beers available

Barbecue both days

Beer Garden

Cases of Entire Stout and Summer Lightning only £23

36 pint polypins from £56 & 18 pint minipins from £29

Special Hop Back seasonal brews each month

Nearest tubes: Colliers Wood or South Wimbledon (5 mins walk)
Local buses: 57, 156, 200

The Star, Godalming



Have you ever visited a pub far from home, fallen in love and wished it were *your* local? It's happened to me just a handful of times over the years. One such was the Red Lion in Godalming, run by Ian Thomson. Everything was right: the atmosphere, choice of beer, friendliness of the locals and the quirky eccentricity of Ian himself.

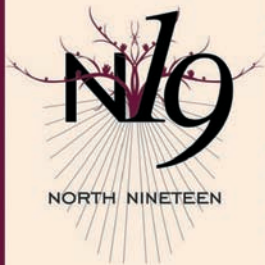
Ian now runs the Star - same town, different street! His e-mail begins *bestpubbloke*... so I took

the fast train from Waterloo to find out whether the "BPB" had worked the magic again. And if so, what is his secret at a time when all is gloom and despair in the British pub trade?

Just 5 minutes walk from Godalming station and there I am in *deja-vu* land. This pub is everything the Red Lion was, and more. On top of all the aforementioned qualities there is a wide range of ciders and perries both on draught and bottled. The double page spread elsewhere in the issue will fill in the details. Pinning Ian down in the secluded garden I put forward some questions to which I thought our readers, fellow landlords and not a few pucos would like answers.

So, 'Best Pub Bloke', give us some background history.

Ian: "I started in the pub business in 1979 with the Chef and Brewer chain covering pubs from Cookham in Berkshire to the Café de la Gare in London's Waterloo. They included a nightclub. Then the Orange Brewery, Pimlico, which was the first managed house brewery - we went from 100 to 1000 barrels a week in year one. Successes followed in other ventures and then the Host Group debacle occurred and I left to



HOLLOWAY'S BEST PUB

Simply the best beer, food and music the area has to offer all under one roof at North Nineteen. Unusual Ales. Superb Wines and top quality Spirits on offer all the time with a wide range of Lagers. All our food is made from scratch on the premises - nothing frozen at all. So come and relax over a freshly prepared meal and well kept pint.



NORTH NINETEEN, 194 - 196 SUSSEX WAY, LONDON N19 4HZ
tel: 020 7281 2786 | web: www.northnineteen.co.uk

join Taylor Walker who were absolute rubbish! Then there was a joint venture company between myself, two colleagues and Whitbread on the Isle of Wight and south coast. We took the Bugle Hotel in Yarmouth from £350 to to £5,000 in the first three months! We went from one to twelve sites on the back of these efforts."

When did you 'go it alone'?

"I set up my own company in '87 and took on a Charrington lease near Liverpool Street. That was so successful it became a managed house- my success left with me!"

A varied background, then; how did you finish up here in Godalming?

"That was after Liverpool Street. I took over the Red Lion in Godalming, together with the Star, as well as a restaurant in Wimbledon and, even a flower shop! Over the last 21 years I have divested everything but the Star."

The Red Lion was hugely successful. How have you repeated the story in the Star?

"For 16 years it languished as a tied pub going nowhere (three landlords later). Some 18 months ago with some arm-twisting and some unexpected vision from the landlord I was able to increase the real ale offer to an interesting variety of up to eight ales at any moment. On the back of the ales we increased our volumes by 250% and, as a direct result of this, all our other products have increased as well, especially our cider sales. Also, many of the Red Lion's clientele followed me to the Star when I left, together with many more when the Lion was forced to close!"

What about the smoking ban?

"Our trade has improved substantially. The smoking area was created and open some two months before the ban and was already being used heavily. Most of our competitors did not do anything until after the event or did not have the space. The low-ceilinged bar area was terrible for smoke but now the lunch business is brisk. Some 80% of our customers used to smoke and thus I had to wait for a government ban to deal with the problem and maintain an equal playing field."

Finally, I wanted Ian's views on three of CAMRA's bugbears: excessive beer duty, supermarket competition and irresponsible drink marketing.

"My views on duty are basically that the Government takes too much out of all our coffers and, as a result, every time the Treasury increases the take the Big Boys use it as an excuse to take a further disproportionate bit as well. Producer duty should be on a sliding scale where narrow bandings based on volumes should be introduced. That is where a charge is incurred in relation to the band and not where the previous volumes get dragged into the higher price."

And supermarkets?

"This is classic big company 'cut off your nose to spite your face' and has gone on from the start of time. Sell at reduced prices to other pub companies and

supermarkets, to the total detriment of your own estate, then wonder why your tenant leaseholders struggle! My landlord was selling to a high street pub company recently at a rate that undercut us by £1 a pint, and then wondered why our volume of the same product stopped moving! The same happens with supermarkets where you can get lager for 22p a 500ml can and three bottles of vodka or equivalent for about £10. These products are subsequently consumed in an uncontrolled environment - normally, in my experience, foolishly! Pubs then get the blame. Having said that, there are some high street pubcos that fuel the problem further. Because they still have to make their few bob they sell shots and caffeine products at times of the day that are injudicious. A nearby local has just started a 'Ten Pint Challenge', for pity's sake!"

No sign of any of that in the Star on the Friday I visited- that's for sure. And I'll visit many times again, like so many other Londoners do. 'Best Pub Bloke'? Ian's got to rank extremely high in that league. And the CAMRA 'Good Beer Guide' rating? Go judge for yourself!

Peter Tonge

Letters and articles for publication in London Drinker may now be submitted online at www.londondrinker.org.uk

Strike Gold this Summer!

...A wonderful golden, flavoured ale with a refreshing, hoppy bite and delicate citrus aroma.

Twickenham Fine Ales

Summer Gold

ABV 4.1%

Inspired by Tradition

Twickenham Original, Twickenham Export, Advantage, Twickenham Special, Twickenham Spring Ale

Twickenham Fine Ales

Tel: 020 8241 1825

www.twickenham-fine-ales.co.uk



Young's Bitter

Decades of
brewing expertise
have gone into
making Young's Bitter
a favourite of those
who value great cask ale.
Available on discerning bars
across the capital -
you'll find the great pint
you've always
enjoyed



Westerham, a brewing experience

Earlier this year, at a “Meet the Westerham Brewer” evening at the Moon under Water, Norbury, I entered a competition for a visit to the brewery. Much to my surprise I was phoned the next week to tell me that I had won.

The day started well. Gale force winds and rain had been forecast and arrived as I was waiting for my bus to Norbury but I made it to the pub in time for my lift to Crockham Hill near Edenbridge with pub manager Sam Jennings and her area manager, Graham Roberts. The brewery is in converted farm buildings on National Trust land and we were met by the founder Robert Wicks and brewer Toby Munn, a recent graduate from the brewing course at Herriot-Watt University. I was very surprised to find that the brewery had only been started in 2004 as I feel as though I have been drinking Westerham beers for longer than that.

The beer to be brewed that day was Finchcocks’ Original, a 3.5% session beer made using local hops from Goudhurst. I managed to avoid carrying sacks up a ladder to the top of the auger feeding the mash tun but enjoyed raking out the mash tun later.

It was a busy day at the brewery. Deliveries are made direct and, in spite of the weather, a delivery was going out to the Dover area. There was also a bottling collection due and it was interesting to see

that the transport containers were filled from the bottom. Fairly obvious to anyone who has filled a carry-out container at a beer festival, but something I had never thought about. I was impressed by the hygiene standards. My previous brewery visit had been to Young’s in Wandsworth when the last brew was in their open fermentation tank which made an interesting contrast to the more modern equipment. Toby said that he spends 90% of his time cleaning out the tanks and the lines used to transfer the beer between tanks. Very comprehensive records are kept of the times and details of each brew.

At the end of the afternoon our brew was transferred to the fermentation tank and after a week in fermenter and a week conditioning in the brewery, the beer was ready in time for the Wetherspoons beer festival and a social at the Moon under Water to sample the brew. The pub had originally ordered two casks but these had sold out so quickly that by our social we were sampling from a third with another in the cellar which wasn’t quite ready to put on. I had an enjoyable evening and hope the other CAMRA members there did too. (*We did – Ed.*)

Ellen Eames



Sept 17th ~ 22nd @ The Oakdale Arms
283 Hermitage Road, London, N4 1NP
Tel.No:020 8800 2013 / www.individualpubs.co.uk/oakdale



BEERFest-Iv-Ale

Ye Be Invited To Join Thee Crew
Celebrating National Talk-Like-A-Pirate-Day

25+ Brews of Grog

Yards O'Ale
Serving Wenches

Outside Bar & Wii Bar
Dont Miss Yaar Share Of The Booty

Mark It On Yee Map!

THE JUNCTION TAVERN

101 Fortress Road, Kentish Town, London NW5

10th ANNUAL BEER FESTIVAL **AUGUST BANK HOLIDAY WEEKEND**

Friday 22nd – Monday 25th August 2008

40+ CASK ALES

Special deals for CAMRA members.

Beer list & tasting notes available.

Heated beer garden. Smoking area.

Fresh, seasonal menu changes daily. Bookings advisable.

www.junctiontavern.co.uk

Telephone 020 7485 9400

SUMMER ALES FROM



- QUALITY REAL ALES
- OVER 600 REGIONAL ALES SOLD NATIONALLY
- WE'RE BRITAIN'S NO.1 SUPPORTER OF MICROBREWING
- RECOMMEND AN ALE, IF THERE IS SOMETHING YOU'D LIKE TO TRY

wetherspoon

Subject to local
availability at pub

M WETHERSPOON



ALLY
OBREWRIES
HING



**CAMPAIGN
FOR REAL ALE**

licensing hours and
participating free houses.

Interested in joining CAMRA?
Ask at the bar for a leaflet.

The 29th Nightingale Walk

On 25 May, Bank Holiday Saturday, 277 people walked along the 20+ miles from Walton-on-Thames to Putney, raising £29,000 at the earliest estimate.

There were many new faces joining us this year as well as friends of Trinity Hospice for the second time and our regular Walk companions from the 12th-14th Battersea Westside Scouts and from Kingston Mencap. Our local MP, Mr Martin Linton and his family showed their support by walking from Walton-on-Thames to Hampton Court and came to the evening festivities as well as sponsoring our Andrij "the Robe" Cholij.

The Walk kicked off at 9am, with the majority finishing by 4pm. The pub management was again represented by Tandy de Villiers (who'd flown in especially from South Africa to participate), who was the first non-runner to reach Putney, taking just four and a quarter hours. A special mention must go to our own "St George", Michael Carrucan who, although coming in at the end, had been weighed down by his armour and a heavy bucket of coins donated from passers-by whilst collecting on the Walk.

Again the Walkers did not go hungry this year,

thanks to the stage points and above all to Keris and Lee who provided breakfast for the early few and an excellent barbecue at the Reception. A lot of hard work was involved for all – so again a special thank you goes out to the pub staff and management, charities and helpers for the check points and transport drivers.

A Medal – to all involved who have made this a RECORD year in terms of both pledges and walkers.

Visit www.nightingalewalk.org.uk to e-mail comments or photos.



Join John & Heather at

The Brewery Tap

Winner of The Beautiful Beer Gold Award - Cask Marque Force 2008



Three rotating Real Ales (many from micro-breweries)
Fuller's London Pride and Adnams Bitter permanently and now we often stock mild ale and Aspull's Suffolk Cider.

- Traditional pub grub, home cooked and served every lunchtime
- Traditional Sunday Roast • Quiz on Mondays from 8.30pm
- Open all permitted hours • Digital juke box • Thursday night - Tapas

**COME TO OUR 'SPOTLIGHT ON DOWNTON
BREWERY NIGHT' AND MEET THE BREWER**
Tuesday 19th August at 8pm

68 High Street, Wimbledon Village SW19 (10 minutes walk from Wimbledon station)

020 8947 9331

email: thebrewerytap@hotmail.com

Dear Editor

A publican to be proud of

On Saturday 28 June my husband dropped me off at Harefield Hospital for some tests which were expected to take several hours. As the tests were over slightly earlier I called my husband and said I'd have a look around the village whilst he drove back to collect me.

It was a beautiful day and I eventually approached the Harefield pub which has some very inviting tables and umbrellas outside. I thought this would be an ideal place to wait for my husband; however, I had very little change and only plastic!

I went into the pub and met the publican, Martin, and very awkwardly asked how much a soda and lime would cost (assuming I would have enough). Martin immediately said he understood my plight and would like me to have the drink on him!

Needless to say I was most grateful and when my husband eventually arrived he made sure he bought drinks for us including one of Martin's specialised real ales. My husband is a real ale fan with ESB being his favourite!

I must comment on what a lovely pub it was with simple decor and an inviting menu and a selection of specialised ales, beer garden and not forgetting a wonderful welcome from Martin.

After reading *London Drinker* Vol 30 No 3 I decided I would like to let you know the hospitality out there, to let your readers know of such an experience.

I live in Northamptonshire but if I am ever in the Harefield area would definitely visit the Harefield.

Annmarie Kulakowski

Dear Editor

Capital Pubcheck notes that while planning applications to turn pubs into flats persist there is some sign that local Councils are now turning these down. It would be hugely helpful to have a round up of where this happens and on what grounds.

One that is mentioned in the Pubcheck is the Fountain in Tottenham, where Haringey Council did block an application following a residents campaign and support from local Councillors. The grounds were that the pub has an historic frontage.

However that has been an isolated case, and pubs continue to close in the area. At the moment the Swan at Tottenham High Cross, mentioned in Izaak Walton's *The Compleat Angler*, is without a licence and its future is uncertain. A local Councillor was quoted in the press as saying that it could either sort the licence issues out or be turned into flats. Hardly helpful.

More helpful to our cause, paradoxically, may be a recession in the housing market. That may stem the flow of applications to turn pubs into flats. It

might also make Councillors think twice before agreeing such applications. After all, if flats are built that can't be sold, they become empty properties and no Council is keen on that, for good reason.

Keith Flett

Dear Editor

I was chuffed to receive a letter from Cask Force telling me that the pub had won £500 pounds and the chance to participate in the Beautiful Beer gold award assessed by Cask Marque. As I already hold the Cask Marque accreditation I thought I knew what was coming, but I was wrong. There were 34 criteria to be met involving cellar management, conditions in the cellar and behind the bar, correct equipment, dispense, paperwork, storage, stock rotation, fridge temperatures - all this and the presentation of beautiful beer! Fortunately they let us know when they were coming, unlike Cask Marque, so me, my staff and my long suffering wife Heather set out to find if standards had been slipping. If they were, all had been put ship shape by the time of the inspection. After a long and nervous wait we were pronounced as passed. Beautiful beers all round. Next time you visit the Brewery Tap you can admire our new wall plaque!

Can we go back in the Good Beer Guide now? (Early application for 2010!)

John Grover

Manager, The Brewery Tap, Wimbledon Village

Dear Editor

Some time ago you printed an article I wrote about the pubs of Barking and I now have to report the closure of another pub, the Red Lion in North Street. It is hardly a great loss as the pub had not sold real ale for a long time and there is a real ale pub, the White Horse, only 100 paces away. My main memories of the Red Lion are of a folk club in the back bar in the sixties and seventies and I understand that in 1965 a struggling American folk singer called Paul Simon appeared there. I wonder what happened to him.

Colin Price

Advertise in the next LONDON DRINKER.

Our advertising rates are as follows:

Whole page £300 (colour), £240 (mono)

Half page £180 (colour), £135 (mono)

Quarter page £95 (colour), £70 (mono)

Phone Peter Tonge now on 020 8300 7693

THE FINAL COPY DATE FOR ADVERTISING IN OUR

NEXT ISSUE (OCTOBER/NOVEMBER)

IS THE FIRST OF SEPTEMBER

The old and the Young's

The current economic turmoil in global commodity and financial markets, the knock-on effects of which are hurting all manner of retail, property and construction businesses, appears not to have adversely affected Young & Co at all. Flush with the proceeds from the sale of the Ram Brewery in Wandsworth, the firm has been investing heavily in a buyers' market, renovating and adding to its pub estate at a cracking pace. As the Chief Executive, Stephen Goodyear, remarked in his introduction to the recently released and very positive set of annual results, "...given the current market conditions, the sale of the brewery looks well-timed".

In late June, Young's Gillian McLaren and her colleague, Jayne Nelson, invited us to check with them on some of the progress made. We visited four pubs; one a recent refurbishment (the **Devonshire** in Balham) and three new purchases (the **Cock & Hen** in Fulham, the **Porchester** in Paddington /Queensway and the **Mitre** in Lancaster Gate). All four pubs sport the new and quite distinctive exterior livery of gold or white lettering on black and, although very different each in their own way, all feature quality food as an integral part of the experience. Moreover, all had been designed with imagination and offered a wide range of seating options and spaces to suit most tastes. There is more to making a pub comfortable than bunging a sofa or two in the corner and these pubs demonstrated, each again in its unique way, how 'pub comfort' can be done stylishly without losing the feel that one is indeed inside a pub. And for perfect symmetry, all four had four hand pumps each dispensing a selection of good quality real ales – Young's Ordinary plus any three from Young's Special, Wells Bombardier, Courage Directors, Young's Waggledance and Deuchars IPA.

There has been much adverse comment within CAMRA circles over the refurbishment of the **Devonshire**, but all of us were left wondering what the fuss is about. This is an excellent pub with several distinct areas, including a public bar that might be less basic than hitherto but which retains all the superb Victorian mirrors and fittings. There is a more formal bar area towards the rear that leads on to a small, very smart restaurant. One wall in this rear section is decorated by a large-scale reproduction of Sandro Botticelli's masterpiece 'Venus and Mars', the original of which can be found in the National Gallery. The large garden and patio area is also a delight – look out for the interesting water feature and the statue of Aphrodite (in her see-through nightie perhaps) where, presumably, a chimney-pot used to be. The staff assured us that most of the old clientele still frequented the pub despite its new popularity.



Gillian confirmed that it was now taking £15,000 a week more in wet sales than before the refurbishment.

The **Cock & Hen** had briefly been a 'Capital Pub Co' brewpub but has been stripped and cleaned to create an airy, open pub with some raised areas to create different spaces. The bizarre mirror collection might interest some punters, but best to head for the secluded rear garden where we were treated to an excellent lunch. The steak, kidney and



oyster pie is especially recommended. None of us could remember the **Porchester** in its previous



incarnation; but we can confirm that it is now a dark and rather cool pub with a real eclectic mix of fittings and furniture, featuring antique items, inter-war art-deco and some ultra-modern stuff. The stillion in the bar serving area is especially striking. Whether the mix works or not is of course a personal choice, so we can only recommend a visit.

Saving the best until last, we walked the short distance to the **Mitre**, a really fabulous London pub if ever there was one. Here, Young & Co have wisely and commendably left the pub well alone, merely restoring the existing, exquisite Victorian

fittings which include cut and etched glass, a skylight and a separate corridor leading to the former 'Ladies Only' room as indicated in the glass pane of the door. Young's have also reopened the upstairs room as a restaurant and installed new chandeliers. In due course they intend to open a cellar bar in the basement.

Judging these pubs on what they are now and not what they were, all come across as very stylish and comfortable establishments that are attracting a new, large and predominantly young clientele. The refurbishments have not compromised historic features; these have been maintained and in most cases cleaned and restored to their former glory. From a CAMRA campaigning perspective, what could be better? Attracting young people into pubs where the real ale on offer knocks spots off the lager competition for quality (and increasingly on price as well) must be what we are aiming for. There may be pub companies around that have little interest in (and even less talent for) running pubs and promoting real ale, but Young & Co is clearly not one of them. Whatever the anti-market and anti-change clique in CAMRA say, businesses such as this are a force for good in themselves – making products that people enjoy and generating profits that can be taxed for the greater good.

Jan Jephcote, Geoff Strawbridge, Peter Sutcliffe, Steve Williams

**THE LAND OF LIBERTY, PEACE
AND PLENTY FREEHOUSE
CAMRA National Pub of the Year
Finalist 2007!
Herts PotY 2006, 2007 and 2008!**



Long Lane, Heronsgate, Hertfordshire, WD3 5BS
01923 282226

R4 Bus Direct from Watford & Rickmansworth
2/3 mile M25 J17; 1 mile Chorleywood Stn

See www.landoflibertypub.com

For more information & beer list

- ❖ **NEW Book Club monthly**
- ❖ **6+ Real Ales inc. a dark beer**
- ❖ **3 Real Ciders & Perry**
- ❖ **Garden Pub Games -
Petanque & Aunt Sally**
- ❖ **Great Bar Snacks All Day**
- ❖ **Free Soft Drinks for Drivers
of 3 + beer drinkers**

**Call us or
see our
website
for more
events**

**Lunches Mon to Sat
Hot Pasties only Sunday
Lunchtime**

**August Beer
Festival !!!
Thurs 21st
(eve) to Mon
25th**

Branch diaries

Welcome to our regular details of London CAMRA contacts and events. This is where branches can say what is happening in their areas that might be of interest to drinkers across London. Events for August and September are listed below.

Branch meetings and socials are open to all - everyone is welcome to come along.

LONDON REGIONAL EVENT

September – Wed 24 (8pm) London Liaison Committee (Regional co-ordination meeting for London Branches). Royal Oak, Tabard St, SE1. *Secretary: geoff@coherent-tech.co.uk*

LONDON PUBS GROUP

Jane Jephcote 020-7720 6327, jephcotej@hotmail.co.uk

August – Wed 13 Evening Crawl of SW1 Westminster and St James's: (7pm) upstairs at St Stephen's Tavern, 10 Bridge St; (7.45) Red Lion, 48 Parliament St; (8.30) Adam and Eve, 81 Petty France; (9.15) Red Lion, 23 Crown Passage; (9.45) Golden Lion, 25 King St; (10.20) Red Lion, 2 Duke of York St.

September – Wed 17 (7.15 for 7.30) Mtg. Royal Oak, Tabard St, SE1 (upstairs). All branches and members interested in pub research and preservation welcome.

Website: www.londonpubsgroup.co.uk

YOUNG MEMBERS GROUP

London co-ordinator Matthew Black 07786 262798, youngmembers@selcamra.org.uk

August – Wed 6 (7pm) GBBF Bar crawl. Earl's Court; meet at membership stand. - **Sat 9** (1pm) GBBF Bar crawl. Earl's Court; meet at membership stand. - **Sun 24** Camden pub crawl. Meet 3pm at Quinns, 65 Kentish Town Rd, NW1 (near Camden Town)

September – Thu 25 Kew Bridge and Chiswick pub crawl.

Details to follow on young members section of CAMRA website.

BEXLEY

Martyn Nicholls 01322 527857 (H), contacts@camrabexleybranch.org.uk

August – Wed 13 (8.30) Mtg. Crayford Arms, Crayford.

September – Wed 10 (8.30) Mtg. Sidcup Rugby Club, Sidcup.

Website: www.camrabexleybranch.org.uk

CROYDON & SUTTON

Keith Worsfold 07872 009005

August – Thu 14 Carshalton crawl: (8pm) Railway, North St; (9pm) Hope, West St; (10pm) Racehorse, West St. - **Tue 26** (8.30) Mtg. Dog & Bull, Surrey St Croydon.

September – Wed 3 East Croydon crawl: (8pm) Porter & Sorter, Billington Hill; (9pm) Oval, Oval Rd; (10pm) Builders Arms, Leslie Park Rd. - **Thu 18** Sutton crawl: (8pm) New Town, Lind Rd; (9pm) Little Windsor, Greyhound Rd; (10pm) Lord Nelson, Lower Rd. - **Thu 25** (8.30) Mtg. Windsor Castle, Carshalton.

Website: www.croydoncamra.org.uk

EAST LONDON & CITY

John Pardoe 07757 772564, elacbranch@yahoo.co.uk

August – Tue 12 Crawl/meeting: (8pm) Hare & Hounds, 282 Lea Bridge Rd, Leyton E10; Princess of Wales, 146 Lea Bridge Rd, E5; then, if they have any real ale, Ship Aground, 144 Lea Bridge Rd, Lower Clapton E5, and finish at Anchor & Hope, 15 High Hill Ferry, E5.

September – Tue 9 (8pm) Mtg. Black Lion, 59-61 High St, Plaistow E13. - **Sat 13** Joint trip to Chappel Beer Festival with Enfield and Barnet branch. Travel details available from branch late July. - **Fri 19** (8pm) ELAC Club of the Year award presentation. Leyton Orient Social Club, Oliver Rd, E10. - **Sat**

20 (6.30) Special ELAC award. LOSC, Oliver Rd, E10

Website: www.pigsear.org.uk

ENFIELD & BARNET

Brian Willis 020 8441 1892 (H), Branch mobile 07757 710008 at event.

August – Thu 14 (8.30) Garden social. Orange Tree, Highfield Rd, Winchmore Hill N21. - **Wed 20** Southgate N14 social: (8.45) Fishmongers Arms; (9.45) Waggon. - **Tue 26** (9pm) Social, Old Mitre, 58 High St, Barnet EN5.

Sept – Wed 3 (9pm) Social. Jolly Farmers, 2 Enfield Rd, Enfield EN2. - **Sat 6** Mystery Ramble. Meet by 10.30 at Enfield Chase station for 10.49am train: use 4 for 2 offer. - **Tue 9** (8.30) Mtg. Whole Hog, 430-434 Green Lanes, Palmers Green N13. - **Sat 13** Chappel BF (joint with ELAC branch). Meet by 10.15 at Liverpool Street station: use 4 for 2 offer. Bring your CAMRA mem. card for free entry. - **Thu 18** (9pm) Club social. Ponders End Working Men's Social Club, 46 South St, Ponders End. BRING CAMRA MEM. CARD. - **Thu 25** London Drinker pick up and social. Old Wheatsheaf, 3 Windmill Hill, Enfield.

Website: www.camra-enfield-and-barnet.org.uk

KINGSTON & LEATHERHEAD

Clive Taylor 020-8949 2099 (H) 020-8540 1901 (W) ctaylor2007@freeuk.com

August – Wed 13 (8.15) Mtg. Running Horse, Bridge St, Leatherhead. - **Fri 15** (8pm) Social. Woodies beer festival, Thetford Rd, New Malden. - **Sun 17** (1pm) Lunchtime BBQ. Wych Elm, Kingston. - **Sat 30**. Bus trip to breweries and pubs in Henley and Marlow areas. Pick up 10am Surbiton rail station; return about 8pm. Fare £15 approx. Deposit £5 to book.

September – Tue 2 (8.15) Mtg. Albert Arms (upstairs), High St, Esher. - **Sat 6**. Train trip to Kenley beer festival: 11.38 Surbiton to Clapham Jct, then 11.59 to Upper Warrlingham for bus to Kenley airfield. - **Wed 10** Kingston crawl: (8pm) Boaters (on river at Canbury Gardens), then Queens Head and others. - **Sun 14** Lunchtime visit to Teddington: 12.51 train from Kingston or (1pm) Bloaty Mallard (ex Railway) outside Teddington station, then to other pubs towards river.

Website: www.camrasurrey.org.uk

NORTH LONDON

Social contact: Steve Ducker 07910 151494, steve.ducker@yahoo.co.uk Branch contact: John Cryne 020-8452 6965, john.cryne2@googlemail.com

August – Tue 19 (7.30) Informal social. White Lion of Mortimer, 125-127 Stroud Green Rd N4.

September – Tue 2 N1 two pub social: (8pm) Scolt Head, 107a Culford Rd; then Northgate, 113 Southgate Rd. - **Tue 9** Social (8pm) Star, 38 St Johns Wood Terrace, NW8. - **Tue 16** Mtg (8pm) Wenlock Arms, 26 Wenlock Rd, N1. - **Tue 23** Highgate N6 social: (8pm) Red Lion & Sun, 25 North Rd; then Prince of Wales, 53 Highgate High St; Angel, 37 Highgate High St. - **Tue 30** (8pm) 2009 Good Beer Guide launch. Lord Palmerston, 33 Dartmouth Park Hill, NW5.

Website: www.camranorthlondon.org.uk

RICHMOND & HOUNSLOW

Brian Kirton 020-8384 7284(H), briankirton@blueyonder.co.uk

August – Wed 20 (8.30) Mtg incl. POTY shortlisting. Red Lion, 92 Linkfield Rd, Isleworth. - **Wed 27** (7pm) Brentford crawl: (7pm) New Inn, 1 New Rd, then pubs en route to finish (10.15) at O'Brien's, 11 London Rd.

September – Wed 10 (8.30) Mtg to reduce POTY nominations to final three. Prince Blucher, 124 The Green, Twickenham. - **Sun 14** Teddington crawl (with Kingston & Leatherhead Branch), starting (1pm) Bloaty Mallard, 3 Victoria Rd, then Builders Arms, 38 Field Lane and other pubs towards the river.

- Wed 17 (8.30) Mtg. Kings Arms, 2 Lion Gate, Hampton Ct. Rd, Hampton Ct. - **Sat 27** (1pm) Tour of final three pubs in POTY - details tbc.

Website: www.rhcacma.org.uk

SOUTH EAST LONDON

Neil Pettigrew 07751 898310 (M) *evening or weekends only*, branch.contact@selcamra.org.uk

August - Tue 19 Rotherhithe SE16 Social crawl: (7.30) Ship, 39 St. Marychurch St; (8.15) Gregorian, 96 Jamaica Rd; (9pm) St James Tavern, 72 St James Rd. - **Fri 22**-**Mon 25** Brew Wharf Beer Festival, Stoney St, SE1. - **Tue 26** BR6 Social crawl: (7.30) British Queen, 427 Crofton Rd, Locksbottom; (8.15) Black Horse, 318 Crofton Rd; (9.15) Whyte Lyon (Ye Olde), Farnborough Common BR6 8NE.

September - Mon 1 (8pm) Cttee mtg and social. Crown & Greyhound, 73 Dulwich Village SE21. - **Tue 9** Beckenham BR3 Social crawl: (7.30) Bricklayers Arms, 237 High St; (8pm) Coach & Horses, Burnhill Rd; (8.45) George Inn (Ye Olde) 111 High St; (9.30) Jolly Woodman, 9 Chancery Lane. - **Wed 17** Norwood SE27 Social crawl: (7.30) Hope, 49 Norwood High St; (9pm) Park, 56 Elder Rd. - **Tue 23** Social crawl along the river: (7.30) Mayflower, 117 Rotherhithe St, SE16; (8pm) Old Justice, 94 Bermondsey Wall East, SE16; (8.30) Angel, 101 Bermondsey Wall East; (9.15) Ship Aground, 33 Wolsley St SE1; (10pm) Bridge House 218 Tower Bridge Rd SE1.

Website: www.selcamra.org.uk

SOUTH WEST ESSEX

Alan Barker swessex@essex-camra.org.uk

August - Tue 5 (7pm) GBBF social. Earl's Court 1. - **Tue 12** (8.30) Social. Travellers Friend, 496/498 High Rd, Woodford Green. - **Sat 23** (11.30) 13th Clacton Beer Festival social. St James's Hall, Tower Rd, Clacton. - **Thu 28** (7.30) Aldborough Hall Farm BF social. Aldborough Hall Farm, Aldborough Rd North, Newbury Park IG2.

September - Thu 4 (8.30) Social. Britannia, 1 Church Rd, Barking. - **Sat 6** (12.30) Wibblers Brewery Trip. Mayland, Essex, CM3, by minibus (sorry now full-up) from Chadwell Heath, Romford, Upminster and Corringham: contact Graham Platt on 020- 8220 0215. - **Tue 9** (7.30) 22nd Chappel Beer Festival social. East Anglian Railway Museum, Chappel & Wakes Colne station, nr Colchester. - **Tue 16** (8pm) Social/quiz night. County (ex-Horns Tavern), 134 Horns Rd, Barkingsside. - **Tue 23** (8.30) Social. Rising Sun, 144 Ongar Rd, Brentwood.

Website: essex-camra.org.uk/swessex

SOUTH WEST LONDON

Mark Bravery 020-8540 9183 (H), 020-7147 3826 (W), markbravery@blueyonder.co.uk

Cricket: Tom Brain 07796 265972, thomas.brain@horwath.co.uk. New players and spectators always welcome for friendly Sunday afternoon matches.

August - Wed 6 GBBF social: (7pm) Bar P7, Earls Court (later meeting times 8pm and 9pm). - **Tue 19** (8pm) Social (meet Downtown brewer evening), Brewery Tap, 68/69 High St, Wimbledon Village SW19.

September - Mon 8 (7.30) Open cttee mtg (Good Beer Guide 2009 distribution). Sultan, 78 Norman Rd, South Wimbledon SW19. - **Thu 18** Clapham SW4 crawl: (7.15) Bread & Roses, 68 Clapham Manor St SW4; (8pm) Manor Arms, 128 Clapham Manor St; (8.45) Stonhouse, 165 Stonhouse St, (9.45) Rose & Crown, 2 The Polygon, Old Town; (10.30) Tim Bobbin, 1 Lillieshall Rd.

Website: www.sulcamra.org.uk

WATFORD & DISTRICT

Andrew Vaughan 01923 230104 (H) 07854 988152 (M)

August - Wed 6 GBBF Earl's Court social. Meet 6pm at

membership stand and every hour thereafter. - **Thu 14** Abbots Langley and Hunton Bridge: (8.40) Unicorn, Gallows Hill, Abbots Langley; (9.30) Waterside Tavern, Bridge Road, Hunton Bridge; (10.15) Hunters Bar & Restaurant, King's Lodge Hotel, Bridge Rd, Hunton Bridge. - **Sun 24** West Hyde, Maple Cross, Horn Hill and Heronsgate walk. Meet (12.10pm) Oaks, Old Uxbridge Rd, West Hyde. No 6 bus goes from Watford Town Centre at 11.30.

September - Mon 1 (8pm) Mtg. Estcourt Arms, St. Johns Rd, Watford. - **Sat 13** Belsize and Saratt social: (12.45) Plough, Dunny Lane, Belsize; then the Boot and the Cock in Saratt. No 352 bus leaves Watford Town Centre at 12.15. - **Wed 24** St Albans Beer Festival, Alban Arena, St Albans. Meet 6pm at products stand and every hour thereafter. - **Mon 29** (8pm) Mtg. Estcourt Arms, St. Johns Rd, Watford.

Advance notice - Thu 2 October (8.30 for 9pm) Quiz night at the Southern Cross, Langley Rd, Watford.

Website: www.watfordcamra.org.uk

WEST LONDON

Kimberly Martin 07717 795284, KimberlyMartin@yahoo.com

August - Tue 5 to Sat 9 Working Social. Great British Beer Festival, Earls Court. - **Tue 19** (7.30) Mtg. Star Tavern, Belgrave Mews West, SW1. - **Fri 29 to Sun 31**. Working Social, Hop Farm Beer Festival, Paddock Wood, Kent.

September - Tue 9 (7.30) Mtg. White Horse, Parsons Green. - **Fri 19** W1 Talk Like a Pirate Day pub crawl. Dress up, play 'Pirate Bingo', win prizes! (7.30) Smugglers Tavern, 28 Warren St; (8.30) Hope, 15 Tottenham St; (9.30) Ship, 116 Wardour St. - **Mon 29** (7.30) Shut the Box social. Buckingham Arms, 62 Petty France.

Website: www.westlondon-camra.org.uk

WEST MIDDLESEX

Acting Social Secretary Roy Tunstall 07960 031399, socials@westmiddxcamra.org.uk

Branch contact John Bush 07739 105336, info@westmiddxcamra.org.uk

August - Mon 11 (8pm) GBG criteria mtg. JJ Moon's, 12 Victoria Rd, Ruislip Manor. - **Mon 25** Bank Holiday crawl: start (12 noon) Five Bells, High St, Harmondsworth.

September - Wed 10 (8pm) Mtg. Woodman, Breakspear Rd, Ruislip. - **Wed 24** Harefield social: (7pm) Horse & Barge; (8pm) White Horse; (9pm) Harefield; (10pm) Kings Arms. Website: www.westmiddxcamra.org.uk

Electronic copy deadline for the October/November edition: 10th September 2008. Please send entries to geoff@coherent-tech.co.uk.

Take a learned pub crawl
with Judith Black around
Rice Village, Houston.
Visit the Travel Pages at
www.londondrinker.org.uk

THE SPEAKER

A real pub in the heart of London - no music, screens or fruit machines, but we do have atmosphere

4 real ales always available
Youngs Bitter, Shepherd Neame Spitfire and two guest beers from a portfolio of over 200

A CELEBRATION OF CASK ALE

August 18th to August 29th

Following our successful 'Week on the Farm' we are 'Going to the Zoo'

September 22nd for one week

we are going back to our
Ales from East Anglia

Hot and cold snacks plus sandwiches always available
- ALL HOME MADE

More info: www.pleisure.com

Opening hours: Monday - Friday: noon - 11.00pm
Closed Saturdays and Sundays

**The Speaker, 46 Great Peter Street, Victoria
London SW1P 2HA Tel: 020 7222 1749**

THE GREEN DRAGON

**Croydon
CAMRA
Pub of
the Year
2008**

**Croydon
Best Bar None
"Best Pub"
Cask Marque
Accredited**

*We're
very, very
Hoppy!*
we are Croydon
**CAMRA's
PUB
of the
YEAR**
Cheers guys!

**Good
Beer
Guide 2008**

**Hogs Back
and
Dark Star
ales
always
available
together
with other
guest beers.**

**Regular
Ale Festivals**

**The Green Dragon, 60 High Street, Croydon, CR0 1NA
t: 020 8667 0684 e: thegreendragon.croydon@townandcitypub.com**

Priory Arms

a genuine free house

The Cask Marque logo guarantees the quality of our beer. Our ever changing range includes...



83 Lansdowne Way
Stockwell
(5 minutes from
Stockwell Tube)
SW8 2PB
Tel: 020 7622 1884



Food available:
Monday - Friday: 12.30 - 2.30pm
6.30 - 9.30pm
Saturday: 1.00 - 9.30pm
Traditional Sunday Lunch: 1.00 - 6.0pm



Function Room

- Hop Back Summer Lightning, Harvey's Best and three guest ales always available.
- 1st floor Function Room - 60 capacity.
- An extensive range of continental bottled beers.
- 20 wines by the glass or bottle.
- Traditional Sunday lunch.
- Sunday night trivia quiz.

The aim of 'Capital Pubcheck' is to share information about the latest happenings on the London pub scene including new pub and bar openings, name changes, acquisitions, closures, notable changes to beer ranges etc.

Information is gathered from a variety of sources including London Drinker readers, individual CAMRA members and branch contacts, breweries, pub operators, landlords etc. If you would like to contribute to 'Pubcheck' please send your news to the address below.

Young's have acquired an O'Neill's pub from M&B in EC4 Ludgate Circus and reinstated real ale but at the same time they have removed real ale from a pub in SW19 Wimbledon Village. A former M&B (Nicholson) listed pub has reopened in W1 Marylebone with real ale but at a premium price. Several new bars are recorded in Central London and suburban high street locations but few with real ale. We highlight a number of pubs throughout London where real ale has been reinstated or a more adventurous beer range, often via the SIBA Direct Delivery Scheme, has been reported.

Closures continue across the capital, generally with aspirations for conversion to other uses or demolition for redevelopment provided planning permission is

forthcoming.

Cross references to CAMRA's various pub guides covering Greater London are provided to enable easy updating. The numbers in brackets after each entry refer to the page numbers in the following guides: BM - Balham to Morden Pub Guide; BRP - Barnes to Raynes Park Pub Guide; CE - Camden & Euston Real Ale Guide; E - East London & City Beer Guide, 3rd edition; H - Hertfordshire Guide to Real Ale, 2000 edition; HB - Holborn & Bloomsbury Pub Guide; IS - N1 Islington Real Ale Guide; K - Guide to Kent Pubs, 10th edition; 8K - Real Ale Guide to Kent Pubs, 8th edition; KT - Kingston Pub Guide; N - North London Beer Guide, 3rd edition; RHP - Richmond to Ham & Petersham Pub Guide; SE - South East London Pub Guide, 4th edition; 3SE - South East London Pub Guide, 3rd edition; SW - South West London Pub Guide, 2nd edition; W - West London Pub Guide, 2nd edition; WB - Wandsworth and Battersea Pub Guide; X - Essex Beer Guide, 9th edition.

If you would like to report changes to pubs or beers, please write to: Capital Pubcheck, 2 Sandtoft Road, London SE7 7LR or email: capitalpubcheck@hotmail.com.

NEW & REOPENED PUBS & PUBS CONVERTED TO REAL ALE

CENTRAL

EC1, CLERKENWELL HOUSE, 23-27 Hatton Wall. No real ale. Independent lounge bar and restaurant in former shop premises.

EC1, BAR 120, Thistle City Barbican Hotel, 120 Central St. No real ale. Previously unreported chain hotel bar.

EC1, JACK BEARDS, 32 Hall St. Renamed 32. Greene King: Abbot. Reinstatement of real ale. Independent free house, ex-Truman. Formerly OAKLEY ARMS. (E21, U145, U191)

EC1, MURPHIS, 102-108 Clerkenwell Rd. No real ale. Independent bar featuring karaoke with free entry and also a night club, in former 'Zyros' cocktail bar premises. Previously HONKERS and originally BURGUNDY BENS. Reinstated on pub database. (E13, U169, U180)

EC1, ROYAL STAR, 220 City Rd. Fuller: London Pride. Reinstatement of real ale after refurbishment. (E23, U195)

EC2, CARGO, 83 Rivington St. No real ale. Previously unreported independent bar.

EC4, LA GRANDE MARQUE, 45/47 Ludgate Hill. No real ale. Independent wine and champagne bar with keg beer in former bank premises.

EC4, LEON, 12 Ludgate Circus. No real ale. Independent bar and restaurant, now with Meantime keg beers, previously operated as a pure restaurant. Formerly HOG'S HEAD, HOGSHEAD and OLD KING LUD. Reinstated on pub database. (E52, U83, U162, U172, U186)

EC4, LONDON REGALIA, Swan Pier, Swan Lane. No real ale. Independent bar and restaurant on barge on the Thames, previously unreported.

EC4, O'NEILL'S, 2/3 New Bridge St. Reverted to ALBION, Wells: Bombardier, Young: Bitter, Waggledance. Acquired by Young's from M&B and added to their 'pub and dining' chain after refurbishment. Bare floorboards,

sofas, chandeliers etc. Reinstatement of real ale. Formerly FORSTER & FIRKIN for a while. Note full address. (E45, U131, U150, U160)

WC2, BROWNS, 82/84 St Martins Lane. No real ale. M&B 'bar and brasserie' and part of chain, in former Westminster court building.

WC2, MOTION, Hungerford House, Victoria Embankment. No real ale. Independent bar and club in former workshop premises.

W1(Mar), BEEHIVE, 126 Crawford St. Everard: Sunchaser Blonde (£3.70/pint, £1.90/half). Former Spirit pub sold to Capital Pub Co in 2006 but remained closed for 2 years, reopening in April as a gastropub after being sold on to the owner of the independent Vineopolis restaurant chain. Basic refurbishment with partitioned eating/drinking areas, pine flooring, tiled around bar, low level lighting etc, effectively destroying the former traditional character of this grade II listed pub. Also dispenses Meantime keg beers at the same extortionate price. Can this be the most expensive pint of real ale in London? (W50, U188, U192)

W1(Mar), CHURCHILL BAR, Hyatt Regency Churchill Hotel, 30 Portman Square. No real ale. Hotel bar on corner with convenient entrance from Upper Berkeley St, open to non-residents. Part of hotel chain.

W1 (Mar), RADISSON PORTMAN HOTEL, 22 Portman Sq. No real ale. Foyer bar and restaurant. Part of hotel chain.

W1(S), BARRAFINA, 54 Frith St. No real ale. Independent bar and tapas restaurant in former restaurant premises.

W1(S), DUKE OF WELLINGTON, 77 Wardour St. Courage: Directors; Fuller: London Pride. (W65)

W1(S), PROFILE, 56/57 Frith St. No real ale. Independent, predominantly gay bar in former restaurant premises.

EAST

E1, CARPENTERS ARMS, 135 Cambridge Heath Rd.

Capital Pubcheck - update 201

Fuller: London Pride but not always available. Now run by Pubs 'n' Bars chain, ex-Bass. (E62, U108, U163)

E2, ANGEL & CROWN, 170 Roman Rd. Fuller: London Pride. Free house now run by Pubs 'n' Bars chain.

E2, FLEA PIT, 49 Columbia Rd. No real ale. Previously unreported independent café bar.

E2, FYMFYGBAR, 231 Cambridge Heath Rd. No real ale. Independent bar with comedy club, in former commercial premises.

E2, NELSONS HEAD, 32 Horatio St. Courage: Best Bitter. Free house now run by Pubs 'n' Bars chain. Welcome reinstatement of real ale in this former Batemans (ex-Gibbs Mew, ex-Charrington) pub. (E82, U73, U92, U132, U166)

E2, PREMISES, 203 Hackney Rd. No real ale. Independent bar in former commercial premises opened by April 2003 but not previously reported.

E2, VICTORY, 27 Vymer St. Fuller: London Pride; Greene King: Old Speckled Hen. (E85)

E3, MAR I TERRA, 223 Grove Rd. Renamed CROWN, Adnams: Bitter, Explorer; Sharps: Doom Bar. A welcome return to more of a pub proper and reinstatement of real ale. Formerly CROWN HOTEL. (E89, U155, U188, U194)

E17, DUKES HEAD, 112 Wood St. Draught Bass; Greene King: IPA. Reinstatement of real ale. Now Enterprise, ex-Watney via Unique and now run by the same operators as Famous Pig & Whistle, E17. (E166, U191)

E17, RISING SUN, 26 Woodford New Rd. Reopened and renamed RS LOUNGE, no real ale. (E168, U194)
CLAYHALL, UNICORN, 225 Clayhall Ave. Greene King: IPA; guest beer (e.g. Everard: Tiger). Reinstatement of real ale. Greene King, ex-Whitbread. (X34, U166)
RAINHAM, MANOR HOTEL & RESTAURANT, Berwick Pond Rd. No real ale. Independent hotel bar open to non-residents. Building was formerly 'Berwick Manor' nightclub and previously a free house. (X97)
ROMFORD, BITTER END, 15 High St. Courage Best Bitter; Fuller: London Pride. Reinstatement of real ale. Formerly FORD and previously FORD & FIRKIN. (X101, U166, U185, U192)

NORTH

N1, LA TASCA, 21 Essex Rd. No real ale. New branch of tapas chain with fizz beer.

N1, MOSAIC, Hilton Islington Hotel, 53 Upper St. No real ale. Independent hotel foyer bar and restaurant.

N1, VINEYARD, 178/179 Upper St. Greene King: IPA, Old Speckled Hen; Wells: Bombardier. Formerly GARDEN and MOON UNDER WATER, originally 179 UPPER STREET. (N37, U137, U145, U159, U176, U189, U199)

N1, REGENT, 201/203 Liverpool Rd. Flowers: IPA but not always available. Formerly PRINCE REGENT, STONE BAR, Jindwicks restaurant and NOLIAS CAFÉ BAR. (N53, U141, U175, U198, U199)

N14, RISING SUN (YE OLDE), 7 Chase Side.

IMPRINT

embroidery



pubs • clubs • breweries • beer festivals

Superb Quality Embroidery
on the garments of your choice
No job too big or too small



Please call Michael to discuss your requirements

Tel: **01895 238675** • Fax: **01895 238975**

www.t-shirtalert.com • imprint@t-shirtalert.com

1a Villier Street, Uxbridge, Middlesex, UB8 2PY

It takes all sorts to campaign for real ale

Join CAMRA today...

Complete the Direct Debit form below and you will receive three months membership free and a fantastic discount on your membership subscription. Alternatively you can send a cheque payable to CAMRA Ltd with your completed form, visit www.camra.org.uk or call 01727 867201. All forms should be addressed to Membership Secretary, CAMRA, 230 Hatfield Road, St Albans, AL1 4LW.



Save money by paying by Direct Debit!

Your Details

Title Surname

Forename(s)

Date of Birth (dd/mm/yyyy)

Address

Postcode

Email address

Tel No (s)

Partner's Details (if Joint Membership)

Title Surname

Forename(s)

Date of Birth (dd/mm/yyyy)

Please state which CAMRA newsletter you found this form in?

	Direct Debit	Non DD
Single Membership (UK & EU)	£20 <input type="checkbox"/>	£22 <input type="checkbox"/>
Joint Membership (Partner at the same address)	£25 <input type="checkbox"/>	£27 <input type="checkbox"/>

For Young Member and concessionary rates please visit www.camra.org.uk or call 01727 867201.

I wish to join the Campaign for Real Ale, and agree to abide by the Memorandum and Articles of Association.

I enclose a cheque for

Signed Date

Applications will be processed within 21 days

Mem Form 0108



Instruction to your Bank or Building Society to pay by Direct Debit

Please fill in the form and send to: Campaign for Real Ale Ltd, 230 Hatfield Road, St Albans, Herts AL1 4LW



This Guarantee should be detached and retained by the payer.

The Direct Debit Guarantee

- This Guarantee is offered by all Banks and Building Societies that take part in the Direct Debit Scheme. The efficiency and security of the Scheme is monitored and protected by your own Bank or Building Society.
- If the amounts to be paid or the payment dates change, CAMRA will notify you 10 working days in advance of your account being debited or as otherwise agreed.
- If an error is made by CAMRA or your Bank or Building Society, you are guaranteed a full and immediate refund from your branch of the amount paid.
- You can cancel a Direct Debit at any time by writing to your Bank or Building Society. Please also send a copy of your letter to us.

detached and retained this section

Name and full postal address of your Bank or Building Society

To the Manager: Bank or Building Society

Address

Postcode

Name(s) of Account Holder (s)

Bank or Building Society Account Number

Branch Sort Code

Reference Number

Originators Identification Number

9 2 6 1 2 9

FOR CAMRA OFFICIAL USE ONLY
This is not part of the instruction to your Bank or Building Society

Membership Number

Name

Postcode

Instructions to your Bank or Building Society

Please pay CAMRA Direct Debits from the account detailed on this instruction subject to the safeguards assured by the Direct Debit Guarantee. I understand that this instruction may remain with CAMRA and, if so will be passed electronically to my Bank/Building Society.

Signature(s)

Date

Banks and Building Societies may not accept Direct Debit Instructions for some types of account.

WHAT'LL IT BE THEN?

A PINT OF THE USUAL, OR A
LIFE-CHANGING EXPERIENCE?

Allow us to introduce you to an old friend. Fuller's ESB, three times Champion Beer of Britain, seen here in its smart new livery. Don't worry, the beer's just the same as ever. But if it's been a while, maybe it's time you reacquainted yourself with its uniquely rich, deliciously fruity flavour and long, satisfying finish. It could well be the happiest reunion of your life.



ESB. THE CHAMPION ALE.

Reopened and renamed **MAZE INN**, no real ale. Spirit, ex-Watney pub believed now independent after disposal. (N119, U161, U163, U193)

N20, NEW BULL & BUTCHER, 1277 High Rd. Greene King: IPA. Reinstatement of real ale. Formerly **BULL & BUTCHER** (N147, U198)

NORTH WEST

NW1, CAMDEN FOOD CO, Upper Concourse, St Pancras International Station, Pancras Way. No real ale. Café and deli with keg beer, run by Select Service Partner.

NW1, DEVONSHIRE ARMS, 33 Kentish Town Rd. Renamed **HOBGOBLIN**, Wychwood: Hobgoblin. Reinstatement of real ale. Primarily a goth and heavy metal venue but all are welcome. (N164, U157).

NW1, SLOE, opposite Platform 1, Station Concourse, Euston Mainline Station. No real ale. New bar run by Select Service Partner in former shop unit. It shares a cellar with the Britannia on the first floor, also run by SSP.

SOUTH EAST

SE1, ARCH ONE, 1 Mepham St. No real ale. Independent 'bar and grill' in railway arch, not previously reported.

SE1, ARCHDUKE, 153 Concert Hall Approach. No real ale. Independent bar and restaurant with keg beers

SE1, BANANA STORE, 1 Cathedral St. No real ale. Independent 'bar diner and gallery' in basement.

SE1, ELUSIVE CAMEL, 186 Tooley St. Renamed **BRIDGE LOUNGE**, Adnams: Bitter; guest beer (e.g. Bath Barnstormer). Reinstatement of real ale. Punch, ex-Bass. Formerly **KING OF BELGIUM**. (SE23, U158)

SE1, EV, Arches 97/98/99 Isabella St. No real ale. Bar (at 97) and restaurant in railway arches, part of TAS restaurant chain.

SE1, GLADSTONE ARMS, 64 Lant St. Black Sheep: Bitter; Caledonian: Deuchars IPA. Reinstatement of real ale. Punch, ex-Bass. (SE17, U184)

SE1, JACK'S, Arch 96 Isabella St. No real ale. Independent bar 'lounge & kitchen' in railway arch.

SE1, SPECTRUM, Park Plaza County Hall Hotel, 1 Addington Rd. No real ale. Hotel foyer bar/café, part of hotel chain

SE1, TAPAS BRINDISA, 18/20 Southwark St. No real ale. Tapas bar and restaurant with keg beer.

SE1, THAI SILK, Arches 94/95 Isabella St. No real ale. Bar (at 95) and Thai restaurant in railway arches, part of chain.

SE10, 57, 57 Greenwich High Rd. No real ale. Reopened independent bar and restaurant, ex-Watney. Formerly **ROSE OF DENMARK**. (SE100, U166, U197)

SE10, LORD HOOD, 300 Creek Rd, Courage: Best Bitter. Nice old fashioned pub with traditional early English and Irish music every night and jazz some lunchtimes. (SE98)

SE11, WHITE BEAR, 138 Kennington Park Rd, Adnams: Bitter. Reinstatement of real ale. Now Punch, ex-Bass. (SE111, U191)

SE16, CAULKERS, 126 Lower Rd. Reopened and renamed **YELLOW HOUSE**, Adnams: Bitter, Broadside. (SE145, U197)

SE16, ST JAMES TAVERN, 72 St James Rd, Marston: Pedigree. Now Enterprise, ex-Watney. (SE152)

WELLING, OLD NAGS HEAD, 37 High St. Renamed **NAGS HEAD**, Greene King: Abbot. Now Greene King, ex-Whitbread. (3SE287, U47, U149, K146)

SOUTH WEST

SW1(W), SHOELESS JOE'S, 1 Abbey Orchard St. Renamed **BASE ONE** by September 2004 and now **ABBEY**, Marston: Best Bitter, Pedigree; guest beers (e.g. Brakspear: Bitter, Jennings: Snecklifter). Originally **BAR EXCELLENCE**. (U130, U147, U156)

SW4, CALF, 87 Rectory Grove. Fuller: London Pride or guest beer from M&B list (e.g. Caledonian: Deuchars IPA). Reinstatement of real ale. Formerly **FRIESIAN & FIRKIN**. (SW60, U148, U151, U161, U191)

SW4, FALCON, 33 Bedford Rd. Fuller: London Pride; Greene King: IPA. Reinstatement of real ale. Also Weston Organic Vintage Cider on handpump. M8B, ex-Bass. (SW60, U142, U188)

SW4, FIREFLY, 69 Clapham Common South Side. No real ale. Independent café-bar in former commercial premises.

SW4, GLOW LOUNGE, 6 Cavendish Parade, Clapham Common South Side. No real ale. Independent café-bar in former shop premises.

SW4, SMOKE ROOMS, 100 Clapham Park Rd. Renamed **GREY GOOSE**, Caledonian: Deuchars IPA; Wells: Bombardier. Now an independent free house, ex-Bass. Formerly 100. (SW59, U184)

SW4, SUN, 47 Old Town. Fuller: London Pride; Caledonian: Deuchars IPA; guest beer. Reinstatement of real ale. Also Weston Organic Vintage Cider on handpump. M8B, ex-Bass. (SW61, U145)

SW8, VASCO DA GAMA, 152 Old South Lambeth Rd. Reopened and renamed **NACIONAL DE LONDRES**, no real ale. Now a bar and tapas restaurant. (SW80, U141, U199)

SW15, BAR M, 4, Lower Richmond Rd. Reverted to **STAR & GARTER**, Caledonian: Deuchars IPA; Fuller: London Pride. Reinstatement of real ale. (SW104, U126, BRP14)

PUBS CLOSED OR CEASED SELLING REAL ALE

CENTRAL

EC1, BAR RIA, Enterprise, closed. Formerly **BAR 170**, originally **CROSBY HEAD**. (E14, U94, U97, U174, U186, U189)

EC1, BEAR, 2 St Johns Sq, Enterprise, ex-Whitbread via a spell leased to Geronimo Inns, H removed. Formerly **BLAKES**, **SQUARE** and originally **COACH & HORSES**. (E14, U79, U113, U152, U169)

EC1, CROWN & WOOLPACK, already reported as converted to restaurant, now converted to retail use. (E15, U108)

EC1, GREN MAN & STILL (**McCLOUGHLANS**), Free, now converted to coffee shop. (E17, U164, U189)

EC1, KINGS HEAD, Greene King, ex-Whitbread via Laurel, closed and frontages surrounded by scaffolding as is the whole former Whitbread brewery block. Rumoured that block may be converted to an hotel. (E19, U74, U75, U142)

EC1, ST PAULS TAVERN, Greene King, ex-Whitbread via Laurel, closed and frontages surrounded by scaffolding – see Kings Head above. (E23, U74)

Capital Pubcheck - update 201

EC1, **TERRY NEILLS SPORTS BAR**, Free, already reported as converted to 'School Dinners' restaurant, now closed and whole block surrounded by scaffolding. Formerly **KNIGHTS**. (E19, U55, U69, U85, U190)

EC1, **VIC NAYLORS (VIC'S BAR)**, Free, no longer sells draught beer in bar or restaurant, cocktails and bottled beers only. Delete from pub database. (U184)

EC2, **THROGMORTON**, M&B (Nicholson), ex-Taylor Walker, closed, future uncertain. Formerly **THROGMORTON RESTAURANT**. (E36, U69, U70, U169)

EC3, **FINE LINE**, 124-127 Minories. Renamed **MARY JANES**, H removed. Now operated by Mint Group, ex-Fuller's. (U143)

EC3, **FT'S FREE HOUSE AND ENGLISH CLUB**, Free (Thornley Taverns), closed. (U163)

EC3, **PUMPHOUSE**, 86 Fenchurch St, M&B (Nicholson), ex-Bass, closed along with whole building (82-86), pending redevelopment. Note correct address. (E41)

EC3, **S I BILLS**, Free, converted to 'Clause Bar', cocktails and bottled beers only. Delete from pub database. (U166)

EC3, **VINO VERITAS (LEADENHALL)**, ex-S&N, renamed **VINE** by April 2005, demolished for major office development. Formerly **SHIP & TURTLE**. (E42, U64, U106, U130)

EC4, **PRINTERS DEVIL**, Free, closed and boarded up. (E52, U189, U191, U192)

EC4, **PUZZLE EC4**. Renamed **JAMIES** and now part of wine bar chain, ex-Puzzle. H removed but retains keg lager. (U108, U170, U174)

EC4, **TILTED WIG**, Free, now converted to 'Old Bailey' Italian restaurant. (U121, U184)

EC4, **WALKERS (OF HOLBORN)**, ex-Bass, converted to 'Volupte' cocktail bar, no draught beer. Delete from pub database. (U69, U151)

WC2, **MARQUEE BAR & CLUB**, Free, closed along with whole block. Note correct name. Formerly **ROSE & SPRINGBOK**, **BABBELAAS** and **SLUG & LETTUCE**. (W141, U191, U199)

WC2, **BRIEF ENCOUNTER**, Free, converted to private members' club attached to St Martins Hotel. (W30)

WC2, **O'NEILL'S**. 166-170 Shaftesbury Ave, M&B, converted to 'Thai Square' restaurant. (W36, U186)

W1(S), **YO! BELOW**, Free, now converted to private karaoke bar with no draught beer. Delete from pub database. (W70)

EAST

E1, **BAR BED**, Free, closed. Formerly **BLACK HORSE**. (E61, U110, U163)

E1, **OXFORD ARMS**, Free, now demolished and part of a major development site. (E71, U180)

E2, **CAVALIER**, Free, previously reported as converted to offices, now closed and boarded up following a fire. (E79, U93, U156)

E2, **DUKE OF CAMBRIDGE**, 25 Cambridge Cresc, ex-Ascot, still closed and boarded up. (E80, U99, U134)

E2, **DUKE OF CAMBRIDGE**, 101 Queensbridge Rd, ex-Bass, demolished and now flats built on site and occupied. (E80)

E2, **GREYHOUND**, ex-Courage, now converted to



realale.com

Over 90 quality ales, ciders and perries, including a European selection, available online or call **0208 892 3710**

Visit our shop:
371 Richmond Rd
Twickenham
Middlesex TW1 2EF

JOIN OUR ALE CLUB
FOR 3, 6, 9 or 12 MONTHS

The
Fox



Green Lane,
Old Hanwell,
London W7
Tel: 020 8567 3912

CAMRA West
Middlesex
Pub of the Year
2005 and 2007

We're a unique family-run pub with award-winning beers and freshly cooked food; a welcome pit stop for visitors to the Grand Union Canal and Hanwell Flight of Locks.

Weekday lunch available
12 - 3pm

Evening menu available
Tues - Sat 6 - 9.30pm

Saturday Brunch
12 - 4pm

Sunday Roasts
12.30 - 3pm

Email: thefox@oldehanwell.fsnet.co.uk

residential use. (E81, U158)

E2, HABANAS, Free, closed. Formerly CITY OF PARIS. (E79, U86, U98, U168, U187)

E2, JOINERS ARMS, Enterprise, H removed. (E81, U94, U99, U159)

E2, LIMES, Free, confirmed now converted to commercial use. (E82)

E2, MELANGE, Free, closed. Formerly CK BAR, OARSMAN and NICE LITTLE EARNER. (E83, U75, U158, U199)

E2, ROYAL STANDARD, Enterprise, ex-Whitbread, H unused by July 2000, closed c2003, then reopened and renamed PLAZA c2006, still no real ale, and now renamed again, KORSAN BAR by 2008. (E84)

E2, SHAKESPEARE, ex-Truman, closed. (E85, U89, U92, U198)

E2, WHITE HORSE, ex-Whitbread, closed. (E86)

E2, YORKIES, ex-Truman, now demolished. Formerly DUKE OF YORK. (E80, U101, U169, U191)

E5, CHIMES BAR, ex-Bass, now closed and boarded up. Formerly PEGASUS, originally WHITE HART. (E101, U76, U159)

E8, KINGS ARMS, Free, closed and boarded up. (E113, U112, U187, U197)

E13, SULTAN, Free, demolished. (E137)

E14, ANCHOR & HOPE, Enterprise, closed again and lease for sale. (E142, U184, U191)

E14, OLD SHIP, Free, H removed. (E146, U98)

E14, XANDERS, Free, ex-Inntrepreneur. Renamed MELAKA, still closed and boarded up. Formerly HOUSE

and HOUSE THEY LEFT BEHIND. (E146, U159, U192)

E16, PEACOCK. 92 Victoria Dock Rd, Free, ex-Phoenix, closed and all signage removed. Formerly ESSEX ARMS, (E159, U112, U119)

E17, PIG & WHISTLE, now FAMOUS PIG & WHISTLE, S&N PE, ex-Greenalls, no real ale. (E168, U134)

HORNCHURCH, KINGS HEAD, Free, now converted to 'Prezzo' restaurant. (X71, U160, U198)

SOUTH HORNCHURCH, GOOD INTENT, Spirit, ex-S&N, H removed. (X107)

NORTH

N22, YATES'S WINE LODGE, now simply YATES, Laurel, ex-Yates's, closed. (U154)

EAST BARNET (EN4), DUKE OF LANCASTER, ex-Courage, now demolished (in 2000) and replaced by small housing estate. (N246, U157, U158)

NORTH WEST

NW1, GLOUCESTER ARMS, Spirit, ex-Taylor Walker, confirmed acquired by Frances Holland girls school and works now underway. (N167, U184)

NW1, ARIZONA BAR & GRILL, Free, closed and boarded up. (U196)

NW1, CAMDEN ROCK CAFE, ex-Bass, already reported as converted to shop and closed following fire damage, now demolished. Formerly FUSILIER & FIRKIN for a while and originally CAERNARVON CASTLE. (N166, U151, U164, U184, U192, U194, U199)

The DOVE Street Inn

76 St Helens St, Ipswich, Suffolk
Tel: 01473 211270



www.dovestreetinn.co.uk

OUR NEXT BEER FESTIVAL
Wed 27th - Sun 31st Aug



FOOD SERVED ALL DAY EVERY DAY
DAILY UP TO 60 CASK ALES/MILDS
LARGE LIST OF MALTS,
FRUIT WINES AND CIDERS

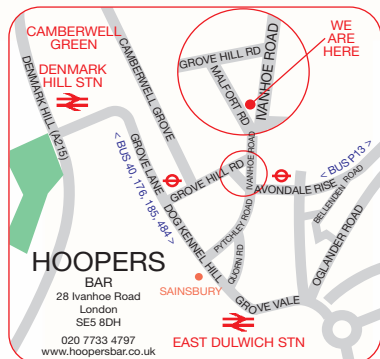
Suffolk CAMRA
Pub of the Year 2008

HOOPERS

28 Ivanhoe Road, London, SE5 8DH
Tel: 020 7733 4797 Mobile: 07956 502152
www.hoopersbar.co.uk Email: info@hoopersbar.co.uk

**AUTUMN BEER FESTIVAL
WINNERS FROM THE
GBBF & SIBA!**

If you missed them at Earl's Court,
try them here, Thurs 11th - Sun 14th Sept
Thurs & Fri from 5pm, Sat & Sun from 12 noon



Capital Pubcheck - update 201

NW1, CROWNDALE, ex-Whitbread, confirmed now demolished and replaced by an almost exact replica for residential use; only the new brickwork and lack of corner door give it away! (N164, U186, U192)

NW1, FRESHH, Free, now converted to vodka bar with no draught beer. Delete from pub database. (U193)

NW9, WORLDS END, ex-Ambishus, closed. Formerly WHITE LION OF MORTIMER. (U109, U138, U140)

EDGWARE (HA8), PRINCE OF WALES, ex-S&N, closed. (N257, U106)

SOUTH EAST

SE1, GILLY'S, ex-Watney, converted to residential use. (SE17)

SE1, GLOUCESTER ARMS, ex-Courage, now demolished (c2006). (SE18, U193)

SE1, GOLDEN FLEECE, 37 Law St, ex-Bass, renamed RUSE TOO, closed by April 2008. Note full address. (SE18)

SE1, GREEN MAN, Free, converted to Chinese restaurant. (SE19)

SE1, JUBILEE TAVERN, S&N PE, now demolished. (SE22, U107, U193)

SE1, LAMBETH WALK, ex-Courage, H unused. (SE23)

SE1, PAPER MOON, Free, closed and under threat of demolition along with whole block. (SE28, U105, U200)

SE1, RAVEN AT THE TOWER, ex-Watney, now demolished with new building under construction on the site. (SE29, U193)

SE1, SHERWOOD, ex-Ascot, closed in May 1996 and now demolished. (SE33, U113)

SE7, HORSE & GROOM, Enterprise, ex-Courage via Unique, closed. (SE72)

SE9, WELCOME INN, ex-Whitbread (Beefeater), now demolished and new housing under construction. (SE88, U102, U186, U193)

SE10, GREENWICH INN, Free, closed and rumoured to be due for demolition to create new access to college behind. Formerly GLOUCESTER. (SE95, U138, U188, U193)

SE18, CROWN & CUSHION, ex-Watney, now demolished. (SE166, U156, U196)

SE18, WOOLWICH INFANT, Unique, ex-Courage via Intrepeneur, now in use as a shop. (SE175, U193)

SE19, PUZZLE, Free (Puzzle), now converted to 'Prezzo' restaurant. (U165, U194)

SOUTH WEST

SW1(B), TURKS HEAD, M&B (Nicholson), ex-Bass, closed, future uncertain. (SW40)

SW1(P), GREYHOUND, ex-Allied (Friary Meux), now converted to residential use upstairs but empty and vacant downstairs. (SW41, U173)

SW1(W), KINGS ARMS, Spirit, closed and boarded up with all signage removed. (SW48, U188)

SW2, FRIDGE BAR, Free, no draught beer. Delete from pub database. (U145)

SW3, PJS, Free, no draught beer. Formerly CRANLEY ARMS. Delete from pub database. (SW57)

SW4, SPRINGFIELD TAVERN, ex-Intrepeneur, demolished and replaced by flats. (SW60, U142)

SW4, XIAN, Free, converted to 'Le Chardon' restaurant.

(U188)

SW6, PITCHER & PIANO, Marston, ex-W&D, H removed. (SW70)

SW8, BAR SW8, converted to furniture shop. Formerly BELL and briefly TURNERS 2. (SW76, U156, U171, U178, U195, U199)

SW8, MARKET TAVERN, Free, closed and derelict. (SW78)

SW8, PHOENIX, ex-Marr Taverns, closed and boarded up. (SW79)

SW8, PORTLAND ARMS, Free, demolished, replaced by housing. (SW79, U141)

SW8, SHAFTESBURY CAFÉ, Free, closed and shuttered. Formerly SHAFTESBURY. (SW80, U141)

SW9, KELLY'S (SHENANAGAN), ex-Taylor Walker, closed and for sale. Formerly DORSET ARMS. (SW82, U155, U167)

SW11, AMNESIA (BAR), Enterprise, ex-Ascot via Unique, converted to 'Ashtar' restaurant. Formerly CEDARS; old name on building now concealed. (SW87, WB24)

SW11, DUSK, Enterprise, ex-Unique (GD Leisure), no draught beer. Formerly GEORGE II and LEGLESS LADDER. Delete from pub database. (SW89, WB29)

SW11, THAI ON THE RIVER, Free, no draught beer. Formerly LA NA THAI AND FACE BAR, BATTERSEA BOATHOUSE, RIVERSIDE and RIVER RAT. Delete from pub database. (SW90, WB38)

SW19, FIRE STABLES, H removed in favour of an ugly Pimm's dispenser. A Young's pub but with no real ale, this 'Gastro Pub & Dining Room' eschews any corporate branding that might encourage a customer to expect any. Formerly CASTLE. (SW116, BRP31)

SW19, MARQUIS OF LORNE, closed; licence reportedly withdrawn. (SW118, BM28, U192, U193)

RICHMOND (TW10), HOLE IN THE WALL, Enterprise, now demolished and sold for redevelopment. (SW155, U191, RHP22)

WEST

W11, COLONY, ex-Whitbread, already reported as converted to restaurant, now converted to 'Tea Palace' expensive tea shop. (W235)

W11, WALMER CASTLE, Enterprise, H unused. (W121)

W14, FOX, Greene King, closed and boarded up since summer 2007. (W128, U185)

BRENTFORD (TW8), BRICKLAYERS ARMS, Enterprise, closed with freehold for sale for £500,000. (W130)

HAMPTON COURT (KT8), CAFÉ DOOLALLY. Renamed TOY (YE OLDE), Free, closed. (W145)

ISLEWORTH (TW7), TRIPLE CROWN, Enterprise, now demolished. (W174, U199)

OTHER CHANGES TO PUBS & BEER RANGES

CENTRAL

EC1, ABBAYE. Renamed ORTEGA TAPAS, still no real ale but retains keg beers. (U121)

EC1, LAS BRAVAS. Renamed ANEXO by April 2005. Formerly TURNMILLS. (E26, U152)

EC1, PRODIGAL. Renamed CAPE, -beers listed;



OPEN 12:00 - 11:00 MON-SAT AND 12:00 - 10:30 SUN

**AVAILABLE FOR PRIVATE HIRE: CONTACT REBECCA NEWMAN
32 WATERMAN STREET, PUTNEY, LONDON SW15 1DD TEL: 020 8789 0222**

Capital Pubcheck - update 201

+Adnams: Broadside; +Archers: Golden; +Wells: Bombardier. Formerly OLD MONK. (U157, U175)
EC2, JOHN KEATS AT THE MOORGATE. Renamed **KEAT'S AT THE GLOBE**. Still connected internally to the GLOBE next door. Now M&B, ex-Bass. Formerly MOORGATE. (E33, U119, U134)
EC3, BRITANNIA, 20 Monument St, -beers listed; +Adnams: Bitter; +Wells: Bombardier. (U34, U70, omitted in error from E guide)
EC3, LOWLANDER is subtitled (**GRAND CAFÉ**). Formerly POET BAR. (U145, U155, U158, U196)
WC1, BAR MOSKO. Renamed **BROWN SUGAR**. (W16)
WC1, CENTRO. Renamed **ONYX**. (W17)
WC1, DUKE OF YORK, -beers listed; +Adnams: Broadside; +Greene King: IPA. (N21, HB7, W18)
WC2, ANGEL & CROWN, -beers listed; +Adnams: Bitter, Broadside; +Caledonian: Deuchars IPA; +Theakston: Best. (W28, U192)
WC2, NAMA, 245 Shaftesbury Ave. Renamed **LA SIESTA** and address now 49-53 New Oxford St, WC1 which is now the main entrance. Now a 'tapas bar and restaurant', still no real ale. (W36)
WC2, SUSSEX, +Fuller: London Pride; +Greene King: IPA; +Young: Bitter. (W41)
W1(May), O'NEILL'S, 7 Shepherd St. Renamed **MARKET TAVERN**, +Taylor: Landlord. (W61, U194)
W1(S), BOARDWALK. Renamed **ZEBRANO**. (U193)

W1(S), CARLISLE ARMS, -beers listed; +Greene King: IPA. Now an independent free house, ex-M&B. (W64)
W1(S), MIDAS TOUCH. Renamed **GRAPHIC**, still no real ale. (W67)
W1(S), N2O. Renamed **JERK**, a bar and restaurant, still no real ale. (W67)
W1(S), SPICE OF LIFE, +McMullen: Cask Ale, seasonal or guest beers. (W69)

EAST

E1, DISPENSARY, +Adnams: Broadside; +Harvey: Best Bitter; +3 varying guests. Formerly OLD DISPENSARY. (U130, U163, U187, U193)
E1, LIGHT. Former railway electrical substation under threat from new development. (U155)
E1, POET, 9/11 Folgate St. Should read **WATER POET**. Formerly PEWTER PLATTER and PEWTER PLATTER TAVERN. (U79, U156, U188)
E2, ALBION, -beers listed; +Taylor: Landlord; +guest beer. Formerly DUKE OF SUSSEX. (E80, U94, U134)
E2, PLEASURE UNIT. Renamed **STAR (OF BETHNAL GREEN)**. Formerly COCK & COMFORT, TOMMY TUCKERS and originally WHITE HART. (E86, U73, U86, U124, U191)
E2, TITLES. Renamed **ON THE ROCKS**. Free entry early evening, night club later. Formerly OLD BASING HOUSE. (E83, U80, U92, U110)
E9, CHESHAM ARMS, -beers listed; +3 changing guest beers, mostly from small brewers. (E120, U71, U147)
E14, CITY PRIDE. Pub and its land sold to developers Glenkerrin for a reported £32 million. Pub currently remains open with planning application expected in late summer. (E143, U199)
E14, GEORGE, -beers listed; +Caledonian: Deuchars IPA; +Fuller: London Pride; +Taylor: Landlord; +Young: Bitter; +guest beer. New emphasis on real ale. Now Enterprise, ex-Watney via Unique. (E145)
E14, NORTH POLE, -beers listed except Fuller: London Pride; +Greene King: Old Speckled Hen; +Marston: Pedigree; +Taylor: Landlord. (E146, U119)
E17, DUKE OF CAMBRIDGE. Now owned by Pubs 'n' Bars, ex-Ridley, still no real ale. (E166, U133)
E17, VILLAGE, +Adnams: Broadside; +Greene King: IPA; +3 guests. Now Pearmans Pub Co, ex-Wessex Taverns. (E169, U67, U100, U130)
CHADWELL HEATH, MOBY DICK, -beers listed; +Greene King: IPA; +Young: Bitter. Now Orchid, ex-S&N via Spirit. (X27)
HORNCHURCH, QUEENS THEATRE. Bar is **GREENE ROOM BAR**; PIT BAR is former name. (X71)
RAINHAM, ALBION, -beers listed; +Caledonian: Deuchars IPA; +Greene King: Abbot. (X97, U173)
RAINHAM, ANGEL INN. Renamed **NEW ANGEL INN**, still no real ale. (X97)
ROMFORD, GOLDEN LION, -beers listed except Greene King: IPA and Theakston: Old Peculier; +Adnams: Broadside +3 other real ales from regional brewers. Formerly **GOLDEN LION TAVERN**. Now Orchid, ex-Spirit. (X101, U175)
WENNINGTON, WILLOW FARM, Premier Inn Rainham, New Rd, -beers listed; +Fuller: London Pride; +Greene King: IPA, Old Speckled Hen. (U166)



The Ailsa Tavern

263 St Margarets Rd, Twickenham TW1 1NJ
 020 8892 1633

www.ailsatavern.com

Friendly, relaxed family-run local pub which has a little bit of everything good!

Great tasting real ales prepared by award-winning cellarman

Wide selection of world wines

Award-winning chef offering a **Mediterranean** food menu daily

Enclosed beer garden

Close proximity to Thames Path

15 minute walk to both Richmond and Twickenham stations

The Ailsa Tavern - Twickenham's best kept secret!



WEST

N1, JORENE CELESTE. Renamed **GRAND UNION.** Enterprise, now operated by small chain of same name. Formerly **ROYAL MAIL.** (N57, U164, IS11)

N1, MEDICINE BAR. Renamed **ALBERT & PEARL.** Now operated by Colombo group. (N51, U121)

N21, HARVESTER. Reverted to **GRYPHON.** (N51, U174, U188)

EAST BARNET (EN4), PRINCE OF WALES, - Worthington: Best Bitter; +Adnams: Bitter. Now M&B, ex-Bass. (N247, H46)

NEW BARNET (EN4), LORD KITCHENER, - McMullen: Gladstone Bitter; +McMullen: Cask Ale. (N247, H84)

NORTH WEST

NW1, FATHER TEDS. Renamed **3 LIONS** after a refurb, although Father Ted branding is still there in smaller letters. (U165)

NW1, MISTY MOON. Renamed **MONARCH** , -beers listed except Courage: Directors; +Draught Bass. Formerly **MAN IN THE MOON.** (N170, U177, U179, U189)

NW4, CAREYS 2. Reverted to **MANNINGS.** (N195, U106, U163, U165, U166)

HARROW WEALD (HA3), DUCK IN THE POND, -beers listed except Fuller: London Pride; + Greene King: Old Speckled Hen; +guest beers (e.g. Brains and Everards). Now badged as part of M&B's Ember Inns chain. (W216)

PINNER (HA5), BLACK HORSE, + Greene King: IPA; +guest beer. (W179)

PINNER (HA5), MANOR, -Draught Bass; + Greene King: IPA. (W180)

SOUTH EAST

SE1, CROWN, -beers listed; +Flowers: IPA. (SE13)

SE1, COOPERAGE, +Davys: Ordinary Bitter. (U99, U102)

SE1, LYE TONG. Should read **LYE TORNG.** Formerly **GIBRALTAR.** (SE17, U182)

SE1, RIVERS. Renamed **ROSE** by August 2005. (SE31)

SE1, ROEBUCK, -beers listed; +Purity: Gold, Ubu. (SE31, U159, U186)

SE1, SHIPWRIGHTS ARMS, -beers listed; +3 changing beers (e.g. Adnams: Bitter, Fuller: London Pride, Shepherd Neame: Spitfire). Now Enterprise, leased to AGT Inns, ex-Unique. (SE33, U105, U125, U159, U160, U179)

SE3, ZERODEGREES. Brewpub beers now include pils, Czech style black lager, US style pale ale, wheat beers (3 different world styles rotating) and a seasonal. Taster sets available. (U155, U160)

SE14, HOBGOBLIN (NEW CROSS), -beers listed; +Wychwood: Hobgoblin; +2 other beers (e.g. Taylor: Landlord, Young: Bitter). Now Pubs 'n' Bars, ex-Wychwood, leased from Enterprise. Formerly **ROSE INN.** Subtitle 'NEW CROSS' only on hanging sign. (SE130, U154)

SE19, ROYAL ALBERT, -beers listed except Fuller: London Pride; +Adnams: Bitter; +Young: Bitter. Now Enterprise, ex-Bass, branded Southside Pub Co. (SE181, U153)

SE24, HALF MOON, -beers listed; + Adnams: Bitter; +Wadworth: 6X. (SE210, U102, U107)

SE24, PRINCE REGENT, -beers listed; +Black Sheep: Bitter; +2 beers from SIBA (e.g. Cottage, Wychwood). Now S&N PE, ex-Truman. (SE210, U107)

SE26, DOLPHIN , -beers listed; +Adnams: Broadside; + Fuller: London Pride; +Taylor: Landlord. Formerly **FERRER & TROUSER LEG** for a while. Same operator as Dartmouth Arms, SE23. (SE222, U110, U149)

CROYDON, CRICKETERS, 47 Shirley Rd, Addiscombe , -beers listed; +Harvey: Sussex Bitter; +4 changing guests from SIBA. Now Enterprise, ex-S&N. (3SE238, U55, U62, U107)

CROYDON, CROWN, 28 Wickham Rd, Shirley, -beers listed ; + Greene King: IPA; +Harvey: Best Bitter; +Wells: Bombardier. Beers may vary. (3SE239, U55, U165)

SOUTH WEST

SW1(B), TALBOT , -beers listed; + Fuller: London Pride; + Greene King: Old Speckled Hen; +guest beer (e.g. Hook Norton, Wells). Now Spirit, ex-S&N. (SW39)

SW1(P), PAGE. Reverted to **QUEENS ARMS** , -beers listed except Fuller: London Pride; +Caledonian: Deuchars IPA. Formerly **SLUG & LETTUCE.** (SW44, U163, U181)

SW1(P), SPREAD EAGLE . Renamed **GROSVENOR** , -beers listed except Fuller: London Pride; +Greene King: IPA, Old Speckled Hen. (SW44, U181)

SW1(P), ST GEORGES TAVERN , -beers listed except Fuller: London Pride; +Black Sheep: Bitter; +St Austell: Tribute; +Taylor: Landlord; +Young: Bitter. Now M&B (Nicholson), ex-Bass. (SW44)

SW1(W), BUCKINGHAM ARMS. Now simply **BUCKINGHAM** (on main signage) after refurbishment, +Wells: Bombardier, Waggedance. (SW47)

SW1(W), COLONIES , -beers listed; + Fuller: London Pride; +Young: Bitter; +2 guest beers (e.g. Old Mill, Robinson). Now Spirit, ex-S&N. (SW48)

SW4, BAR SW4. Renamed **O'NEILL'S.** Now M&B, ex-Bass. Formerly **GOOSE & GRANITE.** (SW60, U145, U184)

SW4, PENTAGON. Renamed **64TH & SOCIAL.** (U164)

SW5, COURTFIELD , -beers listed; +Adnams: Broadside; +Marston: Pedigree; +Taylor: Landlord; +Wadworth : 6X; +Wells: Bombardier, Young: Bitter, Now Spirit, ex-S&N. (SW62)

SW5, TOURNAMENT , -Fuller: London Pride; +Greene King: IPA. Now Innventure, ex-Whitbread via Laurel and Massive. (SW65, U172)

SW6, ATLAS , -beers listed; + Caledonian: Deuchars IPA; +Fuller: London Pride; +Taylor: Landlord. Beers may vary. Now Enterprise, ex-Inntrepreneur via Unique. (SW65, U142, U143, U152)

SW8, DUCHESS, +Greene King: IPA. Formerly **DUCHESS OF YORK.** (SW76, U141, U188, U196)

SW8, NOTT , -beers listed; +Flowers: IPA. Formerly **NOTTINGHAM CASTLE.** (SW78, U131, U141, U144)

SW11, WINDSOR CASTLE. Under threat from plans for major redevelopment over and around Clapham Jct. (SW90, WB39)

SW16, EARL FERRERS , -beer listed; +Fuller: London Pride; +Taylor: Landlord. (SW105)

Capital Pubcheck - update 201

SW19, DRIFT. Renamed BROADWAY & DRAGON, a Thai restaurant with keg beers now operated by Orchid Inns. Formerly JIM THOMPSON'S FLAMING WOK and previously BROADWAY. (SW116, BM27, U193)

SW19, WAY INN. Wayfairer Hotel. Replaced by bar in renamed ANTOINETTE HOTEL following wholesale refurbishment, still no real ale. (SW120, BM34)

RICHMOND (TW9), MOLLY MALONES. Renamed HOPE OF RICHMOND, -Wells: Bombardier; +Sharps: Doom Bar. Retains Fuller: London Pride. (SW156, RHP23)

SURBITON (KT6), ANTELOPE, -beers listed; + Greene King: IPA, Old Speckled Hen. (SW160, KT39, U189)

SURBITON (KT6), HARTS BOATYARD, -beers listed; +Taylor: Landlord. Now M&B, ex-Whitbread. (SW161, KT41)

SURBITON (KT6), NEW PRINCE, -Gales: GB; + Fuller: London Pride. Now Fuller's, ex-Gales (in 2005). (SW161, U162, KT43)

WEST

BRENTFORD (TW8), WAGGON & HORSES. Sold to property developer St George by Fuller's who want to demolish the pub for new development. Fuller's have applied for planning permission to build a replacement pub on the riverfront nearby. (W134)

HAMPTON, RAILWAY HOTEL. Sold by Greene King and now an independent bar/restaurant with emphasis on food, -Greene King: IPA. (W143)

HAMPTON, ROEBUCK, -Badger beers. Guests include e.g. Ringwood: Best Bitter; Sharps: Doom Bar, Special; Wyre Piddle: Piddle in Colchester and Young: Bitter. (W143)

CORRECTION TO UPDATE 191

PUBS CLOSED ETC

E2, PARTNERS. Delete entry – remains closed as reported in U156.

CORRECTION TO UPDATE 192

OTHER CHANGES

SW8 MARKET TAVERN. Delete entry; changes relate to CAFÉ MONEYPENNY reported in U195 (deletions).

CORRECTIONS TO UPDATE 195

PUBS CLOSED ETC

SW4 FINE LINE. Should read: Renamed BISON & BIRD.

SW8, CAFÉ MONEYPENNY. Should read: Renamed CAFÉ BIANCO and renamed again to REZ'S.

CORRECTION TO UPDATE 197

OTHER CHANGES ETC

ALDBOROUGH HATCH, DICK TURPIN. Should read MILLER & CARTER.

CORRECTIONS TO UPDATE 198

PUBS CLOSED ETC

SW8, HORSESHOE. Should read closed and for sale

WOODIES FREEHOUSE

Thetford Road, New Malden, Surrey KT3 5DX

OUR 4th ANNUAL BEER FESTIVAL & Gala Weekend

Fri 15th to Sun 17th August
46 Real Ales and Free Entry

Souvenir glasses and 'T' shirts available
Lunch menu, Sunday carvery and all day BBQ
Live music, **charity stalls**, and displays

See www.woodiesfreehouse.co.uk or phone 020 8949 5824

(not demolished – delete incorrect correction in U199).

OTHER CHANGES ETC

E1, BLACK BULL. Should read: Renamed NAKODA (not BAR NAKODA).

CORRECTIONS TO UPDATE 199

NEW & REOPENED PUBS ETC

E15, BLACK BULL. Should have read BLACK BULL (YE OLDE). Delete reference to recent renaming.

E17, BARLOCKS. Delete ref to E167.

SE1, AZZURRO. Add: No real ale.

SE1, ARTICHOKE. Amend: -beers listed; +Greene King IPA, Abbot.

BRENTFORD (TW8), GURU CAFÉ & BAR. Is an independent café-bar.

HILLINGDON (UB10), VINE. Should read: Now Orchid.

PUBS CLOSED ETC

WC1, CHURCHILLS. Add ref (N19).

E16, FOX & CONNAUGHT. Already reported renamed. Add: Formerly CONNAUGHT TAVERN.

HARROW (HA1), OSCARS. Ref should read (W155)

SW8, BAR SW8. Add: ex-Inntrepreneur.

SW8, PJ MALONEY'S. Add: Crown & City Leisure

SW11, ALL BAR ONE. Add: M&B, ex-Bass

SW16, JACK STAMPS (BEER HOUSE). Add: Faucet Inns

SW18, OPEN PAGE (now MEL'S). Add: Free (Front Page)

KINGSTON (KT2), ARTFUL DODGER. Should read: H removed after unreported reinstatement of real ale. Now S&N PE. Should have been listed under *OTHER CHANGES etc.*

MITCHAM (CR4), QUEENS HEAD. Add: Enterprise, ex-Inntrepreneur, via Unique.

HOUNSLOW (TW3), SOUTH WESTERN HOTEL. Should read simply SOUTH WESTERN

OTHER CHANGES ETC

SE16, FITCHETTS. Should read SURREY DOCKS TAVERN. Renamed AARDVARK, formerly FITCHETTS.

BROMLEY, PRINCE FREDERICK. Add: -beers listed except Greene King; Abbot.

SW3, CAFÉ BODEGA. Refs should read (SW56, U188, U193)

SW15, CEDAR TREE. Should read: Renamed NORMANBY.

CORRECTIONS TO UPDATE 200

NEW & REOPENED PUBS ETC

N13, WHOLE HOG. Add: Now an independent free house.

NW1, BETJEMAN ARMS. Should read: SHIRES BAR. Reopened and renamed BETJEMAN ARMS. Add refs (N174, U179)

PUBS CLOSED ETC

E2, ATOMIC. Should read: Renamed JO JO'S, ex Sycamore Taverns etc.

TWICKENHAM (TW1), AUSTIN BAR. Planning 'permission' should read 'application'.

OTHER CHANGES ETC

WC2, WALKABOUT. Delete entry. MOTION is different pub - See *NEW & REOPENED PUBS etc* in this update.

HOUNSLOW (TW3). Should read SOUTHAMPTON, 158 Whitton Rd. Reopened and renamed BLUE GINGER BAR. No real ale, four handpumps unused. (W170, U199). Should have been listed under *NEW & REOPENED PUBS etc.*

Advertise in the next LONDON DRINKER.

Our advertising rates are as follows:

Whole page £300 (colour), £240 (mono)

Half page £180 (colour), £135 (mono)

Quarter page £95 (colour), £70 (mono)

Phone Peter Tonge now on 020 8300 7693

THE FINAL COPY DATE FOR
ADVERTISING IN OUR NEXT ISSUE
(OCTOBER/NOVEMBER)
IS THE FIRST OF SEPTEMBER

LOWER RED LION



36 Fishpool Street
St Albans AL3 4RX
Tel: 01727 855669

*Draught Czech and Belgian beers
Belgian bottles and Malt Whiskies
www.LowerRedLion.com*

AUGUST BANK HOLIDAY

BEER FESTIVAL

Friday 22nd
to Monday 25th August

Comfortable B&B
Quiz night Wednesdays

Lunchtime meals
Sunday Roast lunch



THE RED LION

Linkfield Road, Isleworth. Tel: 020 8560 1457
(Isleworth British Rail 2 mins)

***August Bank
Holiday***

Champions Beer Festival

22nd - 25th August

Friday Noon to Monday 11pm

**Over 50 Real Ales plus Draught and
Bottled Belgian Beers, Cider and Perry**

**Entertainment includes The Ginny Brown Band,
Moveable Feast, East of Ealing & The Good Old
Boys. Food on all four days**

Admission Free

Real Ales & Real Entertainment - A Real Local Pub

Visit our website at www.red-lion.info

Purity goes for the wholesome approach

Based in an arable farm in Warwickshire, this is a little 20 barrel brewery with a different approach. Its ethos is “a commitment to the environment, using only natural ingredients, supporting recycling programmes and respecting our community”. This is reflected in the fact that it uses two acres at the back of the brewery for dealing with its effluent through a series of reed beds and water pools.

The brewery got going thanks to a grant from Defra; 50% of which went to the farmer. The money was used not only towards setting up the brewery but also for an education/visitors' centre.

Now in its third year, the brewery has mainly stuck with two beers, Pure Gold (3.8%) and Ubu (4.5%), although it recently produced a special beer for the National Farmers Union, called Farmers Harvest (4.8%). They are considering producing an American IPA in the future. Their house beers are also available in bottles, which are bottled by Thwaites; they are not pasteurised but are micro-filtered. The brewery has managed to get listings in Tescos and they hope to extend into other supermarkets over this next year. So look out for them.

At the Bricklayer's Arms in Putney recently, members from various London branches had the chance to taste Purity's beers and talk to Purity's

Paul Halsey and Flo Vialan (the brewer). For those of you not lucky enough to be there, the website: www.puritybrewing.com gives details of their outlets and how you can visit the brewery. The beers tasted were:

Pure Gold. Their best seller, aimed at encouraging lager drinkers to try a real ale, this beer is made with Maris Otter, Wheat and Caragold malts with Styrian Golding (for the aroma), Northern Brewer, Fuggles and Hereford Golding hops. The result is a light drinking beer with a sweet aroma and a smooth rounded mouthfeel (it is served through a sparkler and slightly chilled). The flavour is fruit (melon and citrus) with malt balanced by a bitterness that grows on drinking, leaving a slight dryness. Note that the bottled version is stronger at 4.3% ABV.

Ubu. This beer is a more traditional beer, amber brown in colour with Maris Otter and Wheat malts, Challenger and Cascade hops. A smooth mouthfeel (again served through a sparkler); soft nose with biscuit overtones that are present on the palate with some appley character which disappears in the aftertaste. The bitterness can be felt at the back of the tongue. Wondering about the name? It's the name of a dog!

Christine Cryne



Museum beer festival

Cheers at Amberley

Ale fans on trains and special buses will head for Amberley Working Museum, for its third and biggest beer festival from Friday 29 to Sunday 31 August.

The museum is in old chalk pits up-river from Arundel and has a wealth of industrial exhibits from Sussex's glorious past. Over forty different cask ales will be on tap, many of them from small Sussex brewers and, apart from the enjoyment to be had, it's a great fundraiser for the museum. Barns are being restored, heritage buildings added and vintage transport acquired all the time. Profits from the festival help as the museum is a registered charity and relies heavily on its enthusiastic volunteers.

Steam engines will steam, vintage buses give rides and



road rollers rumble. Morris Men and Irish dancers perform amongst the ales, ciders and perries. Food and soft drinks will be available from the Limeburners' Restaurant, and probably a barbecue too.

The festival opens 6–11pm Fri 29 and Sat 30 August. Admission is £4 Friday and £3 Saturday. Also during the day Saturday and Sunday the beers will be on sale as part of a Sussex Food & Drink Fair. But after 2.30pm on Sunday any beers left will be sold at £1.60 a pint until stocks are cleared. Special buses are being run from Brighton and Worthing and the museum entrance is next door to Amberley station.

More information from Kate Russell at the museum, www.amberleymuseum.co.uk or 01798 831370.



the harefield

A warm welcome in the heart of Harefield village.

41 High Street, Harefield, Middlesex UB9 6BY

Tel: 01895 820003 email: theharefield@googlemail.com

Opening hours: 12–11:00pm Mon to Sat, 12–10:30pm Sunday



MINI BEER FESTIVAL
Friday 12th - Saturday 13th September

- Real Cask Ales with Timothy Taylor Landlord on permanently
- Rotating Guest Ales
- Freshly Ground Coffee & Tea
- Fine Wines & Champagne
- Disabled Facilities, Beer Garden & Free Parking

HOW TO FIND US ON PUBLIC TRANSPORT:

Take the Piccadilly/Metropolitan line to Northwood/Uxbridge/Ruislip, then U9 or 331 to Harefield.

over 21's only

children welcome when dining

BEER CLUB
£2.00 / pint on all
Real Ales every Wednesday
6pm – 10pm

CAMRA challenges Britain's Best to enter Design Awards

The Campaign for Real Ale has sent an open invitation to Britain's pub designers, architects and owners with a view to rewarding high standards in work undertaken during 2007. Since 1982, the CAMRA Pub Design Awards have encouraged publicans to consider aspects of conservation and maintenance, whilst also recognising those who modernise certain features of their public house without affecting the heritage of the building. The awards will be judged by CAMRA's Pubs Group, dedicated individuals in the field of pub preservation and architecture working in close association with English Heritage and the Victorian Society. There are four award categories:

New build pub. The judges look for a number of details when judging the worth of any brand new establishment. The pub might reflect pubs of the past but without becoming a mere pastiche of Edwardian, Victorian or even Georgian artefacts. Or it could be completely modern, using materials of the 20th or 21st century.

Conversion to pub use. Existing buildings converted to pubs are judged on the taste and restraint used on both the outside and inside of the pub.

Refurbished pub. Refurbishment can range from a complete gutting to replace what was crass and in bad taste with something far better to an enhancement of what was originally there. Refurbishment should suit the individual pub and not be an excuse to use uniform furnishings to brand the pub with a brewery's or pub company's image.

CAMRA/English Heritage conservation award. This award, sponsored by English Heritage, is usually given for work on a pub which conserves what is good in the pub, makes good some of the crass refurbishment efforts of the past and ensures that the fabric of the place will survive for further generations of pub goers and drinkers to enjoy.

Tony Jerome, CAMRA's Press Manager, said, "In an age where the new quickly replaces the old, it is great to reward those that consider Britain's heritage and architecture when it comes to pub design. CAMRA's Pub Design Awards will go to those that have shown innovation and good taste without having to rip out a pub interior and create something completely new. In the past a number of pubcos have insisted on creating a theme that makes their pubs look exactly the same wherever they are located in Britain. This may give them a brand identity but experience shows that themes soon become out of fashion and this leads to companies throwing more money at creating another theme! What is the matter with investing in traditional, quality pub design that has worked for

many pubs over the years? It is the difference in the look and feel of Britain's pubs that creates such an interest and makes our pubs industry unique."

If you own, design, work at, live near or merely like the look of a pub, please do not hesitate to offer recommendations for the Awards. Application forms can be downloaded from the CAMRA website at www.camra.org.uk/pdaawards2008 and entries can be submitted by post to:

Jon Howard
CAMRA Pub Design Awards
Campaign for Real Ale Ltd
230 Hatfield Road
St Albans
Herts AL1 4LW

The closing date for all entries is Tuesday 30 September 2008.

Visit the Travel Pages at
www.londondrinker.org.uk



Charles Dickens

Bar and Restaurant

160 Union Street, London, SE1 0LH

Telephone 020 7401 3744

A genuine free house serving an ever changing selection of the finest real ales from across the UK Cask Marque since 2006

**Opening hours Monday to Friday 12 noon until 11.00pm
Saturday and Sunday from 12 noon until 6.00pm**

**Food served Monday to Friday 12 noon until 8.30pm
Daily special**

**Sunday roasts with a choice of beef, lamb, chicken or pork
served with the freshest seasonal vegetables**

**All produce locally sourced from Smithfield and
Borough Markets**

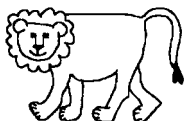
Quiz evening with the "Fat Controller" every Wednesday

FREE ENTRY starts 8.30pm

We are in the 2008 "Good Beer Guide" as well as
the "Time Out" London Pub Guide

**BEER GARDEN NOW OPEN
FOR AL FRESCO WINING AND DINING**

The Charles Dickens is available for hire. Please ask for full details.



REMEMBER THESE DATES

Friday August 29th from 6pm

Saturday August 30th all day

Sunday August 31st all day

The Lion, Teddington

27 Wick Road, Teddington, Middlesex

Greater London CAMRA Pub of the Year 2006

4th ANNUAL BEER FESTIVAL

25+ Distinctive Ales, Ciders

BBQ (continental food), Live 'Music'

A genuine fun affair

Telephone: 020 8977 3199

Fax: 020 8977 6631

Buses 281 & 285

5 minutes walk from Hampton Wick railway station

The Pembury Tavern

90 Amhurst Road, London E8 1JH
020 8986 8597

Real Ales, Cider and Perry,
German and Belgian bottled beers,
Single Malt Whisky, Fine Wines

New: Unpasteurised Lager from
Taddington Brewery in Derbyshire

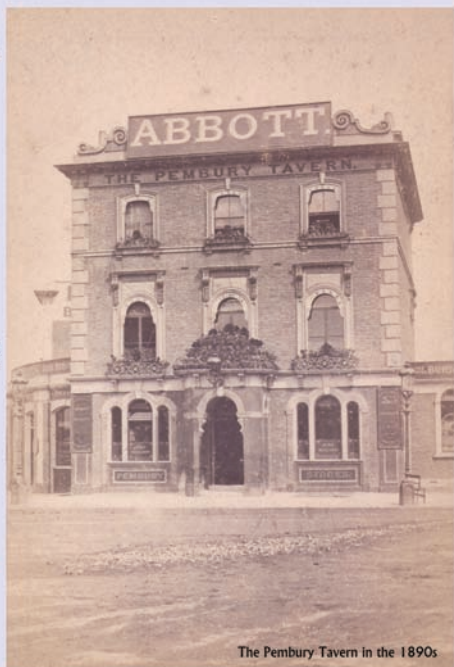
Open 12-11 every day

Food served 12-3 and 6-9
and 12-9 on Sundays

Next Beer Festival in November

<http://www.individualpubs.co.uk/pembury/>

SPBW London Pub of the Year 2007



The Pembury Tavern in the 1890s

Being occasional anecdotes, tall tales, notes and experiences from a drinker's life, all of which are true: for certain values of 'true' (I thank Terry Pratchett for this disclaimer.)

35. CAMRA hard hat at GBBF

CAMRA has always been fairly safety-conscious, so one year, about 1994 or 95, hard hats were supplied for the set-up sessions of the Great British Beer Festival; they even had our logo printed on them. Come the opening day, some idler had not tidied his away, but left it behind the bar. A customer spotted it, and begged to be allowed to buy it. As it was not a sale item, he was politely refused. He explained that he was a brickie, and promised to wear it at work the next day. After a bit more pressure, a member of the bar staff relented and sold it to him. I have failed to get my own! Ah, well; perhaps this year.

36. Gas lamp fitting in a Charrington pub in the City

Back in the 1970s, I was a regular in a Charrington's pub in the City of London. The clientele was a mixture of people who were (or thought they were) 'something in the City', East Enders and wandering beer enthusiasts like me.

In the bad old days of the 1970s, there were rolling power cuts, to do with strike action. This pub had no problem: it had gas lamps and handpumps: no need to close during an outage. One night, Brian, the licensee, told a couple of us a story about them. Some months previously, he had phoned British Gas, the then monopoly supplier, said that he wanted some work done and asked for someone to come and cost it up. An appointment was made and someone duly appeared. Brian stated that he wanted gas lighting. 'No you don't' was the attitude of the visitor. Brian was not to be balked. Eventually, he got his quotation, and confirmed that he did indeed want the job done; and so it was.

Fast forward to the strike: one evening, a stranger came in with his wife and, after getting their drinks, approached Brian. He it was who had surveyed the lighting job. He apologised to Brian for having doubted his sagacity. Brian was so pleased that he would not let the British Gas employee buy a drink for the rest of the night!

37. Three Tuns sign

Some years ago, the Three Tuns pub on Portman Mews, just off Oxford Street, had an interesting pub sign. It showed, not surprisingly, three large wooden casks: two on the floor, and the third one standing on top of them. And there was the jolly landlord, pouring himself a mug from a tap in the topmost one. The interesting thing was that all three were stood on end, and the tap was in the shive hole. How he expected to get the second half of the cask remains a mystery. Unfortunately, the

sign is long gone, nor did I ever get a photo.

38. Tony: how to sell more beer

Another tale from my late friend Tony: he told me that he once caught out a publican with this old gag. Having been served short measure, he asked the landlord if he would like to know how to sell more beer. Of course, the landlord would. "Fill the glasses." was the reply.

39. Roebuck: I'm going for a drink

Back in the 1970s, I went into the Roebuck in NW3 for a pint. The pub was moderately full, so I waited patiently at the bar. After a while, it became obvious that the four barmaids were too interested in their huddled conversation to serve, so I said to the man next to me, "*Blow this for a lark; I'm going for a drink.*" I didn't return for more than twenty years, by which time it had changed ownership several times and had two or more rebuilds.

40. 'The church with handpumps on the altar'

When I was just starting my drinking career, a typical leave-taking on a Saturday night was 'See you in church in the morning.' Now, most of us were church-goers, but to different churches, so the response would be: 'Which church?' And the answer was always 'The one with hand pumps on the altar!'

TWO DOVES

37 Oakley Road, Bromley Tel 020 8462 1627



A warm welcome awaits you in the relaxed surroundings of this friendly pub

Young's selection of Real Ales
Young's Award Winning Garden

CAMRA Good Beer Guide listed
Friendly Clientele • Light Snacks

Bus 320 from Bromley North and Bromley South
railway stations stops outside

Hours: Lunchtime: Mon-Thu 12noon-3pm
Evenings: Mon 5-11pm, Tues-Thurs 5.30-11pm
Fri & Sat 12noon-11.30pm; Sun 12noon-11pm

Idle Moments

As promised, here are the solutions to the puzzles set in June Idle Moments column.

NUMBER PUZZLES:

1. 8 is the Regnal Number of the Uncrowned King Edward
2. 792 Inches in a Chain
3. 5,000 Feet in a Roman Mile
4. 16 Balls on a Pool Table
5. 100 in Hexadecimal is Two Hundred and Fifty Six
6. 998 Cubic Centimetres is the Engine Capacity of a Vincent Black Shadow
7. 2 Saddles on a Tandem
8. 1 Bad Apple in Every Barrel
9. 3 Grand Slams for England Under Will Carling
10. 180 Degrees Celsius is Gas Mark Four

SBY4 (more famous couples):

1. Humphrey Bogart - Lauren Bacall
2. Douglas Fairbanks - Mary Pickford
3. Nicolas Cage - Patricia Arquette
4. Douglas Fairbanks Jr. - Joan Crawford
5. David Copperfield - Claudia Schiffer
6. Ben Affleck - Jennifer Lopez
7. George Burns - Gracie Allen
8. Roy Rogers - Dale Evans
9. Roman Polanski - Sharon Tate
10. Billy Joel - Christie Brinkley

GENERAL KNOWLEDGE:

1. The annual fee when the first television licences in Britain were issued (on 1st June 1946) was £2.
2. Also The first Premium Bond prizes were drawn by "Ernie" on 1st June - it was in 1957 and the first prize was £1,000.
3. The Pope, Angelo Giuseppe Roncalli who died on 3rd June 1963 was officially known as Pope John XXIII.
4. On 6th June 1977 the town designated a city to mark the Silver Jubilee of H.M. Queen Elizabeth II was Derby.
5. The first ball point pen was patented in the USA on 10th June 1943 - by Laszlo Biro who was Hungarian.
6. Bessie Wallis Warfield, born on 19th June 1896 in Blue Ridge Summit, Pennsylvania was better known later in life as Wallis Simpson or the Duchess of Windsor.
7. The man who became President of the USSR on 2nd July 1985 was Andrei Gromyko.
8. 167 Lives were lost in the explosion on the Piper Alpha oil rig on 6th July in 1988.
9. The seven mile long Mont Blanc road tunnel

linking France and Italy was opened on 16th July in 1965.

10. The star of the Goon Show who died on 24th July 1980 was Peter Sellers.

Finding pubs more easily

CAMRA has now produced a Good Beer Guide 2008 Points of Interest (POI) file for TomTom sat-nav users. Catering for techies and pub-goers alike, the file allows users to pinpoint any of the pubs listed in the current Good Beer Guide. CAMRA hopes it will encourage users to get out exploring and uncover some of Britain's best real-ale pubs.

Priced at just £5, the file is available for immediate download from the CAMRA website at:
<http://www.camra.org.uk/GBGPOI> It contains up-to-date information from the 2008 Good Beer Guide, including pub names, addresses, phone numbers and locations. Although it is only compatible with TomTom hardware at present, there are plans to create POI files for other systems in the future.

THE ROYAL OAK



44 TABARD STREET, LONDON SE1

Tel - 020 7357 7173

**Traditional Harvey's Sussex Ales
Served in a Traditional Atmosphere**

Open Mon-Fri 11am - 11pm

**Food Available
Lunchtime & Evenings**

**And now open Saturdays 6pm - 11pm
also Sundays 12 midday - 6pm
with traditional Sunday lunches**

Nearest tube - The Borough

Acting is the most minor of gifts and not a very high class way of making a living. After all, Shirley Temple could do it at the age of four. (Katharine Hepburn)

I was in the pub on Friday night when a reader handed me a piece of paper bearing the following anagram, saying it was in recognition of the end of brewery anagrams in this column (Thanks Martin):

Meany barman gores rower.

See if you can work it out before you get to the bottom of the page. Now, on with the number puzzles:

1. 7 is the S of the S on the OS of a D
2. 23 is the LN you CS with a SD
3. 2 N-CS of the USA
4. 100 is TT
5. 4 K in a D of C
6. 28 C in the AA
7. 3 H in DS (T, E and T)
8. 95 T of ML (N to the CD in W)
9. 10 P is the W of a G of W
10. 5 C on a SHB

For 5BY4 this time I thought I'd go back to where it all started – the Guinness Book of British Hit Singles. I thought I'd pick a selection of songs by Johns but they were scattered all through the book and I soon got bored so I went for Joneses instead – they were all in the same place. All you have to do is match the songs with the singers in the first list.

- | | |
|-----------------------|-----------------------|
| 1. Oran 'Juice' Jones | A. Pearl in the Shell |
| 2. Howard Jones | B. The Rain |
| 3. Tammy Jones | C. Walking in the Air |
| 4. Aled Jones | D. Funny Familiar |
| 5. Tom Jones | E. Forgotten Feelings |
| 6. Rickie Lee Jones | F. High Time |
| 7. Janie Jones | G. Good Timin' |
| 8. Paul Jones | H. Chuck E's in Love |
| 9. Jimmy Jones | I. Let Me Try Again |
| 10. Donnell Jones | J. U Know What's Up |
| | K. Witches' Brew |

For the General Knowledge bit I have again picked a list of events that happened during the months that this London Drinker is current:

1. The coronation of King Edward VII took place on 9th August 1902 after being delayed by six weeks. What caused the delay?
2. On 12th August 1944, PLUTO went into service, running from Shanklin on the Isle of Wight. What does the acronym stand for?
3. What happened on 13th August 1964 to Peter Allen in Liverpool and John Walby in Manchester and why were the events significant?

4. On 14th August 1920 the seventh modern Olympic Games opened - in what City?
5. Blaise Pascal, the inventor of the first digital calculator died on 19th August, but in what year (plus/minus 50)?
6. Barry Gibb, the eldest of the Bee Gees was born on 1st September 1946 - where?
7. The largest airliner ever (wholly) built in Britain had its maiden flight on 4th September 1949 - what was it called?
8. The BBC quiz programme Mastermind was first broadcast on 11th September, but in what year?
9. Lesley Hornby was born on 19th September 1949 in Neasden. By what name is she better known?
10. Belize became an independent country on 21st September 1981. By what name was it previously known?

Well that's about it for another issue; I'm off to avoid having any idle moments for a couple of months by sorting out the finances of Twickenham Beer & Cider Festival (plug) – see you there!

Oh yes, "No more brewery anagrams."

Andy Pirson

FANCY WALKING UP A THIRST?

Then let a qualified London Blue Badge guide meet you at your favourite London pub and lead you on a 60 minute walking tour of the area finishing back where you started.

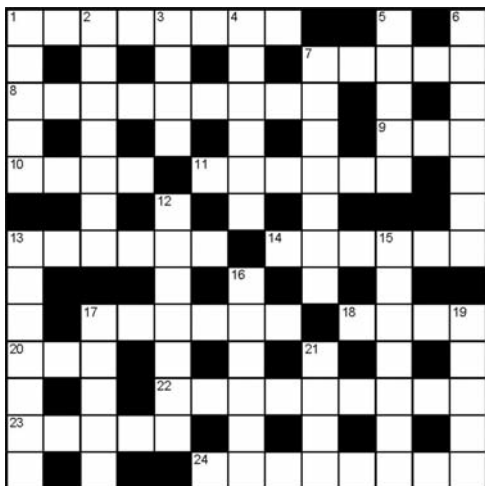
It costs £6 per person with a minimum charge of £50.

Further details from
Tim Kidd on 020 8668 2861
or timkidd@bluebowler.co.uk



Blue Bowler
Bespoke London Walks

Compiled by DAVE QUINTON



Name _____

Address _____

All correct entries received by first post on 17th September will be entered into a draw for the prize.

Prize winner will be announced in the December London Drinker.

The solution will be given in the October edition.

All entries to be submitted to:

London Drinker Crossword

25 Valens House

Upper Pole Hill

London SW2 2RX

JUNE'S SOLUTION



£20 PRIZE TO BE WON

ACROSS

1. Feeling remorse, writer has one drink. [8]
7. A fool, I stand in one spot. [5]
8. Late drinks for fliers. [9]
9. It flows from wineskins. [3]
10. Singer in the musical "Tom Jones." [4]
11. Where to get a beer down under. [6]
13. Leading policemen get to advocate. [6]
14. Looking hard after losing a tie. [6]
17. A man in charge of very small things. [6]
18. Hits back in fight. [4]
20. Plan to gatecrash pyjama party. [3]
22. It's fine to put them down. [9]
23. True mark of the kingdom. [5]
24. Ecstatic about money? Put down a deposit. [8]

DOWN

1. Giant red letters from father? [5]
2. Close match that's put on late. [7]
3. Goodbye and thanks again. [4]
4. Some of mine are definitely closed. [6]
5. Coppers, with hesitation, drink. [5]
6. Almost prevent commander-in-chief increasing fire. [7]
7. I worried about sun being cut off. [7]
12. Low lifer carrying rubbish bag. [7]
13. First couple to have a girl. [7]
15. I am on the beat, in the force. [7]
16. Eat flower containing bees. [6]
17. A quiet friend in shock. [5]
19. I, among others, take the exam again. [5]
21. Half of alehouse mild. [4]

Winner of the prize for the April Crossword:
Al Mountain, Chigwell, Essex

Other correct entries were received from:

Howard Ainaud, Ted Alleway, Pat Andrews, Mark Antony, Hilary Ayling, Jack Bass, Steve Block, Jocelyn Britcher, Ben Burfutt, Eddie Carr, John Cattemull, Chris Fran & a spotted dog, Carole Cook, Chas Creasey, Kevin Creighton, Paul Curson, Elaine Cusic, Robert Day, John Dodd, Richard & Clever Clogs Douthwaite, Don Easson, Kathryn Everett, Brian Exford, Mike Farrelly, Arthur Fox-Ache, Anthony Gdula & Jess the border collie, B.Gleeson, Malcolm Graham, Paul Gray, J.E.Green, Alan Greer, Stuart Guthrie & Duncan Dzordly, Peter Haines, M.Hargreave, John Heath, Andrew Hide, Graham Hill, W.Hill, A.Jenkins, Claire Jenkins, Les Jenkins, David Jiggins, P.Kerrigan, Pete Large, Terry Lavell, G.Lopatis, S.Magin, Steve Maloney, Marcus of Guildford, Dylan Mason, M.J.Moran, Mike Morrison, Nigel Parsons, John Parvin, Mark Pilkington, Ms G.Pote, Derek Pryce, John Redwood, Richard Rogers, Bob Sellwood, Bryan Smith, Lesley Smith, Strollin' Dave C-W, Alina Syyed, Ken Taylor, Bill Thackray, Thamesmeado, Dave Thomson, Paul Tiffany, Trevor Turner, Vic the beard, Andy Wakefield, Leo Walsh, Martin Weedon, Ms E.A.Whole, Sue Wilson, David Woodward, Peter Wright & the Missus, Ray Wright.

The Cricketers



*47 Shirley Road,
Croydon
CR0 7ER
020 8655 3507*

*Croydon & Sutton CAMRA
Pub of the Year 2007*

*A family run pub with
a friendly atmosphere*

*Harveys ale on permanently ♦ 5 rotating ales from micro-
breweries ♦ Home cooked food available midday to evenings*

FORTHCOMING FIXTURES

Come to our

BEER WEEKENDER

From Friday 19th September 2008

16 beers on the go

including Dent Brewery Kamikaze, Oakham JHB,
Hadrian Border Tyneside Blonde,
Naylor's Pinnacle Bitter, Elland Bargee,
B&T Shefford Bitter, Bowland Gold,
Castle Rock Harvest Pale, Fyne Ales Piper's Gold,
Orkney Raven, Hanby Joybringer Ginger and more

HOGS BACK



Visit the HOGS BACK BAR
at the
GREAT BRITISH BEER FESTIVAL