

Vol 30  
No 5

# LONDON DRINKER

CAMRA  
CAMPAIGN  
FOR  
REAL ALE

Oct  
Nov  
2008



Greater London's Pub of the Year (see page 25)

*Brewed longer for a distinctive, full flavour*



Real character doesn't happen overnight.  
Nor are hidden depths immediately obvious.  
But given time, they emerge.

WHEN YOU'RE READY, YOU'LL FIND IT.

London Drinker is published by Mike Hammersley on behalf of the London Branches of CAMRA, the Campaign for Real Ale Limited, and edited by Geoff Strawbridge.

Material for publication should preferably be sent by e-mail to [geoff@coherent-tech.co.uk](mailto:geoff@coherent-tech.co.uk).

Press releases and letters by post should be sent to Tony Hedger, Apartment 11, 3 Bewley Street, London SW19 1XE

Changes to pubs or beers should be reported to Capital Pubcheck, 2 Sandtoft Road, London SE7 7LR or by e-mail to [capitalpubcheck@hotmail.com](mailto:capitalpubcheck@hotmail.com).

For publication in December 2008, please send electronic documents to the Editor no later than Wednesday 12th November.

SUBSCRIPTIONS: £3.00 for mailing of 6 editions or £6.00 for 12 should be sent to Stan Tompkins, 52 Rabbs Mill House, Chiltern View Road, Uxbridge, Middlesex, UB8 2PD (cheques payable to CAMRA London).

ADVERTISING: Peter Tonge:  
Tel: 020-8300 7693.

Printed by Cliffe Enterprise,  
Eastbourne, BN22 8TR

Views expressed in this publication are those of their individual authors and are not necessarily endorsed by the Editor or the Campaign for Real Ale Limited.

Advertise in the next  
LONDON DRINKER

Our advertising rates are as follows:

Whole page £300 (colour)  
£240 (mono)

Half page £180 (colour), £135 (mono)  
Quarter page £95 (colour), £70 (mono)

Phone Peter Tonge now on  
020 8300 7693

## In this issue

News round-up	6
Cider	17
Beer festivals	21
Pub awards	25
The Horseshoe	29
Letters	30
Branch diaries	38
Capital Pubcheck	41
Membership form	43
Love Your Pub	53
Book reviews	54
LocAle	55
Twickenham	56
Taylor's	59
Idle Moments	60
Crossword	62



## Safe, sensible, social – a plea for responsible government

The Department of Health (DoH) has recently issued a consultative document on further action in pursuit of safe, sensible and social drinking, highlighting the prevalence of the harmful (drinking to excess) and binge (drinking to get drunk) varieties and their consequential cost to the NHS. It is intended 'to put in place a policy which will enable more people to drink sensibly and prevent irresponsible practices which encourage people to drink more, or in ways they would not choose if left to themselves'. Fair enough!

The DoH notes that a 'powerful rise' in alcohol-related hospital admissions over the last 5 years mirrors a long-term rise in underlying alcohol consumption: a 60% per head increase between 1970 and 2006. It points out that this rise reflects two developments: a shift to higher alcohol strength beverages, including a shift from beer to both wine and spirits; alcohol becoming more affordable

but acknowledges that 'it is in the off-licence trade where the increase in relative affordability has been particularly strong'.

Indeed! Since 2002 off-trade beer prices have fallen by 7% while pub prices have increased by 24% and now, as a result of the 10% beer tax increase in this year's budget, prices in pubs have increased by 4.4% in the last year

and the average price of a pint of lager in a pub is now £2.82. In contrast, prices in the off trade have fallen by a further 1% as a result of huge price promotions.

Introducing options for more responsible retailing practices, the DoH observes that 'a relatively recent development has been the ability of young adults and others to increase their consumption, sometimes as part of binge drinking by buying cheaper alcohol from supermarkets and off-licences and consuming large quantities before an evening in pubs or clubs'. Well there's a surprise!

Our government has in practice been pursuing not so much an alcohol harm reduction strategy as an alcohol harm expansion strategy. First, steadily increasing tax on beer every year before this latest budget, whilst allowing tax on spirits to stand still, has made cask beer several times more expensive per alcohol unit than much stronger drinks.

Second, simply making all alcohol more expensive, as in this year's budget, has only made irresponsible drinking relatively cheaper as large supermarket chains and global producers of canned and bottled brands can calculatedly absorb tax increases, relying on thereby increasing their market share.

Third, as the DoH consultation explains, agreements between retailers to refrain from reckless promotions of cheap alcohol would



at present be illegal under the 1998 Competition Act. Can Government honestly defend competition between greedy supermarkets cynically offering cases of lager at 50p a can as loss leaders as a higher level policy objective that should override public health and safety? At least DoH is now asking the question.

Let us tell DoH, by their 14

October deadline, that Government should start encouraging people to drink relatively low alcohol cask beer, slowly, in a pub, under the responsible supervision of a qualified licensee. Government action is needed to help pubs as they are the best place to enjoy alcohol responsibly in a regulated and socially controlled environment. On 8

September it was reported nationally that 36 pubs were closing every week. Roger Protz says it all, '*People are abandoning their locals because they can buy cheap supermarket beer at a fraction of the price charged by pubs*'.

For responsible drinkers, is it too much to ask for responsible government?  
Geoff Strawbridge



Safe, Sensible, Social – consultation on further action is available at  
[www.dh.gov.uk/en/Consultations/Liveconsultations/DH\\_086412](http://www.dh.gov.uk/en/Consultations/Liveconsultations/DH_086412)

Advertise in the next LONDON DRINKER. Our advertising rates are as follows:

Whole page £300 (colour), £240 (mono); Half page £180 (colour), £135 (mono)  
Quarter page £95 (colour), £70 (mono). Phone Peter Tonge now on 020 8300 7693

THE FINAL COPY DATE FOR ADVERTISING IN OUR NEXT ISSUE  
(DECEMBER/JANUARY) IS THE FIRST OF NOVEMBER

*We're at it again!*

# THE GREEN DRAGON

## AUTUMN ALE FESTIVAL

THIRTY OUTSTANDING ALES  
TO DELIGHT, THRILL AND AMAZE.

### 22ND OCTOBER - 5TH NOVEMBER

*Sumptuous Food served 'til 9 every day and a Glorious Roast on Sunday!*

PLUS PLENTY OF LIVE MUSIC,  
AND EVEN SOME THEATRE!

THE GREEN DRAGON, 60 HIGH STREET,  
CROYDON, SURREY, CR0 1NA. T: 020 8667 0684  
E: [THEGREENDRAGON.CROYDON@TOWNANDCITYPUB.COM](mailto:THEGREENDRAGON.CROYDON@TOWNANDCITYPUB.COM)

Over 18s only. Ales subject to availability. Please drink responsibly!

A carved jack-o'-lantern with a menacing face, featuring triangular eyes and a jagged mouth.

# The Victoria

10A Strathearn Place, London W2 2NH  
Tel: 020 7724 1191 Email: [thevictoria@fullers.co.uk](mailto:thevictoria@fullers.co.uk)



Join us at  
The Victoria  
for a

## Beer Festival

running from

Sunday 2nd to  
Saturday 15th  
November



Following on from the  
great success of last year  
we'll now be running the  
festival over two weeks  
with 35 beers to be  
sampled (at least four  
beers will be available at  
any one time).



For more details please  
speak to Chris or for tasting  
notes please email:  
[thevictoria@fullers.co.uk](mailto:thevictoria@fullers.co.uk)





## It never stops...

I hope that by the time that you read this, it will have stopped raining. Sadly, pub closures are proving as persistent as the rain. According to a report put together for the British Beer and Pub Association, in the first half of this year pub closures were running at 36 each week. This is an increase from 2007 when Britain lost 1,400 pubs out of 57,000 – almost 2.5%. The BB&PA chief executive, Rob Hayward, warned that it could get worse. Government policies such as the beer duty escalator “*will only drive up costs for pubs and prices for punters. Without a change of heart from the Government, many more are facing closure*”. CAMRA’s Chief Executive, Mike Benner, reinforced this view, saying: “*It is clear that the Government must take urgent action to save pubs*

*from closure. They are essential local services and the Government has a moral duty to protect them*”.

## Government announces review of licensing law

I don’t know whether or not this is going to help the situation but the Parliamentary Culture, Media and Sport Committee is going to review the Licensing Act. The review will cover five key areas: whether there has been any change in levels of public nuisance, numbers of night-time offences or perceptions of public safety since the act came into force; the impact of the Act on the performance of live music; the impact of the Act on sporting and social clubs; whether the Act has led, or could lead, to a reduction in bureaucracy for those applying for licences and those administering it and, finally, whether the anticipated financial

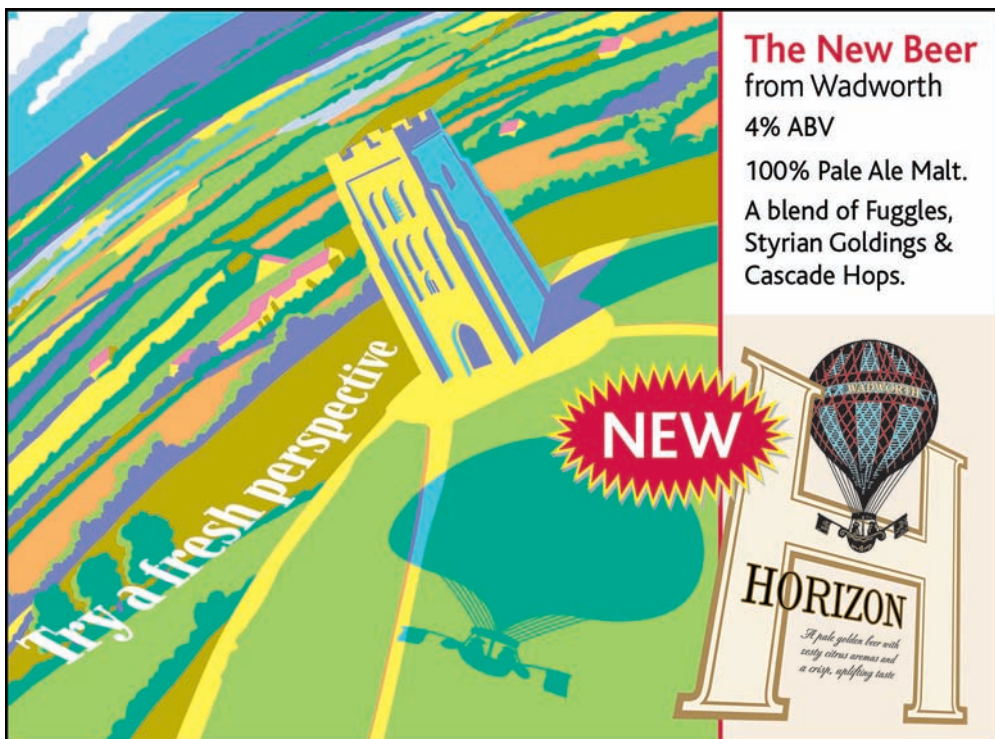
savings for relevant industries will be realised.

Unfortunately, the closing date for submissions is 30 September and so it will be too late now for readers to contribute, but there are some interesting points here so watch this space.

## Great British Beer Festival

This year’s event at Earl’s Court went off successfully. Although numbers were down 10% to 59,000, consumption held up to last year’s level. This may have been down to it being more comfortable following a revision of the layout and there simply being fewer people in the way.

There was some unfortunate confusion over admission prices with the on-line pre-booking price being widely quoted and not the ‘on-the-day’ price but this



**The New Beer**  
from Wadworth  
4% ABV  
100% Pale Ale Malt.  
A blend of Fuggles,  
Styrian Goldings &  
Cascade Hops.

**NEW**

Try a fresh perspective

**HORIZON**  
*A pale golden beer with  
zesty citrus aromas and  
a crisp, sparkling taste*

# THE WILLOUGHBY ARMS

## Halloween Beer & Cider Festival

Weds 29th of October till Sunday 2nd Nov. Noon till Midnight!

Featuring over 30 cask ales & farmhouse ciders

T-Shirts  
Ale-Trail Cards  
Live Music  
Bar B Qs

Friday "Scary Fancy Dress" with PRIZES!!  
Sun Eve Quiz

info @

[www.thewilloughbyarms.com](http://www.thewilloughbyarms.com)

47 Willoughby Road, Kingston upon Thames, Surrey, KT2 6LN tel 020 8546 4236





was not deliberate and you may be assured that the lesson has been taken on board by the organisers. There was also some adverse comment about prices but, contrary to what I heard one customer tell another, the beer is *not* all donated by the breweries. Indeed, in most cases CAMRA is not even given the discounts that would be offered in the free trade. Inevitably, the GBBF has to be as much about fund-raising as it is about campaigning. I hope that this year both were done equally well.

Bad news for those contemplating a Gold Medal for drinking in 2012. Earls Court is wanted by the Olympics organisers – for basketball, I believe – and they have also grabbed all of the student accommodation that CAMRA usually books for GBBF staff. A GBBF in London in 2012 is therefore unlikely at present but plans are being made...

## Beer Exposed

There have been a number of attempts to run commercial beer festivals in London, none of which have become established. The latest is *Beer Exposed*, described as “a stylish new event to expand your perception of beer and provide ultimate end of week socializing”. The event concentrates on bottled beers, both famous beers of the world and UK favourites with the emphasis on beer as a “more flexible alternative to wine when matching with food”. Beer Exposed runs from 25-27 September 2008, at the Business Design Centre, Islington N1 0QH. Tickets range from £14 to £20 and include interactive beer and food tutored tastings, expert-accompanied beer walks, and more. This event sounds as if it is along the lines of the beer festivals that are held in Belgium and the USA so perhaps this one may be a runner.

## Law and order

Readers with good memories will recall that not that long ago film director Guy Ritchie and his wife, Madonna (a popular chanteuse, for those of you not in the know) denied having any interest in a £2.5 million Mayfair pub called the Punchbowl. Anyway, apparently they do after all and it has been the cause of some controversy. The pub was recently accused of running a two-tier pricing system in that visitors were charged £3.90 for a pint but locals only (*only!*) £3.50. At face value this is an offence under fair trading regulations but City of Westminster Trading Standards officers were satisfied that it was simply an accident that occurred during the taking effect of a price increase. Given the rapidity with which prices are increasing, it is easily done.

Now, the above is not just a piece of gratuitous tittle-tattle.

## Visiting Belgium?

*Why not stay at...*

## THE WHITE HOUSE



Tel: 0032 57 36 08 93 / 0032 49 43 26 860

Email: [guy.osteux@telenet.be](mailto:guy.osteux@telenet.be)

Only one hour drive from Calais and Zeebrugge, a brand-new B&B house in a quiet location, 10 mins walk from the centre of Poperinge (hop capital of Belgium) with free secure car park.

3 modern twin-bedded rooms (2 en-suite)

Tariff per night B&B: €70.00, 1 person €50.00

Your hosts Guy and Bea Osteux-Berneart offer you a very warm welcome and friendly hospitality at

**The White House**, 214 Casselstraat, Poperinge B8970, W. Flanders, Belgium

Organisers of the annual 'Character Beer Festival' at the Palace Hotel, Poperinge, 25th & 26th October 2008

## De Olde Mitre

Ely Court, between  
Ely Place and  
Hatton Garden,  
London EC1N 6SJ  
020 7405 4751



**CAMRA GOOD BEER GUIDE 2009**  
East London & City Pub of the Year 2008

## Historic and traditional Ale-House

*Adnams Bitter and Broadside and  
Deuchars IPA always available together  
with other guest beers.*

**Kathy and Scotty thank everyone for  
supporting our Scottish Ales Festival  
and GBBF Open Weekend**

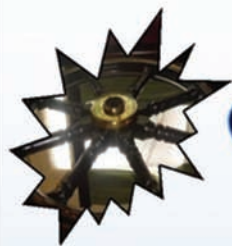
Open 11-11pm Monday to Friday  
(try our famous toasties)

Nearest tubes: Chancery Lane/Farringdon



# Trafalgar Freehouse

## CAMRA



Greater London  
pub of the Year



23 High Path, Merton, SW19 2JY.

(020) 85425342 - [trafalgar@thetraf.com](mailto:trafalgar@thetraf.com) - [www.thetraf.com](http://www.thetraf.com)

Live jazz every Sunday afternoon...

*Please check our website for details  
of upcoming events...*

[www.thetraf.com](http://www.thetraf.com)

# Beer Festival

over 25 beers

and ciders

Live Jazz  
Friday evening  
&  
Live Rock and Roll  
Saturday evening

Friday 17th & Saturday 18th October  
Midday to 11pm

One of the points made by the person who complained was that there was no price list. The Council accepted that this was because the pub was in the middle of changing prices but do pubs have to have a price list these days? According to the legal advice column of the Morning Advertiser, it is not so clear any more. In May, the Price Marking (Food and Drink Services) Order was repealed in favour of a European directive which simply places a 'general obligation on traders to give sufficient information to customers at the point of sale so that they are not misled on prices'. Make of that what you will but it certainly does not demand a full list of prices in a prominent place. Shame.

In a scheme supported by Mayor Boris Johnson, several London borough councils are proposing to limit off-sales to over 21s only. A trial is currently being conducted in Croydon. The managing director of the Diageo Group, (Guinness etc) Benet Slay, has criticised the proposal, saying, "*The fact that an 18 year old could drink alcohol in a pub, club or restaurant yet would not be old enough to purchase a bottle of beer and drink it at home is clearly illogical*". The Government is in some confusion as regards a suggestion that super-market sales of excessively discounted alcohol could be controlled by the introduction of minimum pricing. Even though the initiative is supported by the Department of Health and the Home Office, the Department for Business, Enterprise and Regulatory Reform advises that Government officials should "*avoid putting pressure on businesses to behave in a way that would result in the business being in breach of competition law*".

## News from around London

Young's have acquired the Old Ship on the riverside at Hammersmith. The Cricketers

(Mitcham) and the Charlie Butler (Mortlake) are still up for sale but with no takers yet. At least Youngs are trying to sell them as pubs, even if this is not the best time to do it. The Wheatsheaf (Wandsworth), probably their smallest pub, will close at the end of September to be converted into staff accommodation. The licensees of the Wheatsheaf are however moving around the corner to the Crane. The Crane has suffered, in my view anyway, from an 'identity crisis' over the last few years, never knowing quite what it was supposed to be. Hopefully its new management with their track record of good quality beer will make it into a proper pub again.

Fuller's have reported an increase in sales of 2.7% in the 16 weeks ended 19 July which chief executive Michael Turner describes as a "*robust performance in a challenging market*". Meanwhile the company has also been picking up gongs. It now has its first Michelin Guide listed pub, the Royal Oak, Paley Street, Berkshire which happens to be owned by Nick Parkinson and his father, Sir Michael, was awarded a Bib Gourmand in the 2008 Michelin Red Guide. The Churchill Arms in Kensington was awarded the Morning Advertiser's 'Number 1 Pub in the UK' award whilst the company won two awards at the *Publican Awards* in March 2008 – '*Managed Pub Company of the Year for 100+ outlets*' and '*Tenanted/Leased Pub Company of the Year for 200+ outlets*'.

There are reports that brewing is to resume at the Sweet William Brewery, attached to the William IV pub in Leyton, E10. My report that Crocker's Folly in Maida Vale had reopened as a restaurant was apparently premature. It is still the plan but not yet.

## Brewery news

The big 'national' news is the demise of Cains. All looked

promising in 2002 when the company was rescued by the Dusanj brothers but last year's reverse takeover of Honeycombe Leisure with its 100 pubs left them with a debt around £35 million which, because of recent poor trading conditions, they have not been able to repay. They lost £4.6 million in the six months ending 28 April alone. They are also in dispute with HM Revenue & Customs and when bankers HBOS would not provide additional funds, administration was inevitable. The administrators however hope to sell the company as a going concern and in the meantime brewing continues at the Stanhope Street site and the pubs remain open. They are not in the frame yet but what is the betting that the Marston's war chest is about to open again. At least with Marstons there is the possibility of the brewery remaining open and some of the original beers being retained.

As reported last time, Adnams have released a cask version of their East Green carbon neutral beer and it will be available in Orchid Group and Mitchells & Butler pubs, as well as their own estate. They are however also planning to produce a chilled and filtered version for the All Bar One chain. Er... that would not involve the use of extraneous CO2 by any chance, would it? Adnams alas are not exempt from the current downturn. Their half-year operating profit to 30 June fell to £142,000 from £1.2 million for the same period the previous year. As a consequence they have put the expansion programme for their Cellar & Kitchen outlets on hold.

Greene King are also suffering from the 'credit crunch' (must we call it that – any other suggestions?) with recent sales down 3.4%. Their answer is to cut the prices of drink and food in around 80 of their managed pubs. Examples are Carling lager down from £2.60 to £2.25 and



WYCHWOOD BREWERY

# HOBGOBLIN



AFRAID YOU MIGHT  
TASTE SOMETHING  
LAGERBOY?



Guinness down from £2.90 to £2.50.

There are however, pointedly, no reductions on cask beers. Readers will recall from the last issue that GK were disposing of 80 of their smaller pubs. I wonder if these might be the same pubs. Seventeen GK pubs have closed recently and a further 131 are reported to be on short-term easy-to-exit agreements. Easy for GK, I presume, not the tenants.

I was pleased to see that family tradition still means something at the Black Sheep brewery in Yorkshire. Founder and Managing Director Paul Theakston has been joined in the business by his two sons, Jo and Rob, who will be national account manager and assistant brewer respectively. The sons have both completed four-year industry apprenticeships with other breweries, Jo notably with Wells & Youngs. Less traditional but just as welcome is Black

Sheep's decision to train its sales and marketing staff to Cask Marque accredited standard in cellar management. The Masham brewery put a group of 12 of them through the extensive training course required to achieve the BII Award in Beer and Cellar Quality (ABCQ). All passed with flying colours and all who took part felt that the training gave them an extra insight to the business.

Shepherd Neame, who launched their new beer,



Canterbury Jack at the Great British Beer Festival, have joined the Cask Marque scheme. They are the 31st corporate member and see the scheme as contributing to its support package for licensees.

They have also recently acquired the Westminster Arms, near Whitehall, for an undis-



## CAMRA Award winner two years running

### The Red Lion

Linkfield Road  
Isleworth  
Middx TW7 6QE  
[www.red-lion.info](http://www.red-lion.info)  
020 8560 1457  
(BR 2 mins)



- 'The Friendliest Pub in town'
- Live music
- Traditional real ales
- Cask Marque approved
- Live sports TV coverage
- Amateur pub theatre
- Pub garden
- Traditional local

Beer Festivals May & August



*The* **BOTTLE of BRITAIN**

[www.spitfireale.co.uk](http://www.spitfireale.co.uk)

closed sum. This iconic pub is a stone's throw from the House of Commons and even features a division bell so that MPs and political journalists can dash back to the house in time for the vote. The pub's existing managers, Gerry and Marie Dolan who have played host to an eclectic range of customers including Archbishop Desmond Tutu, Bob Geldof and Prince Edward, will continue to run the house.

The Prince of Wales is planning to sell his organic ale in pubs. Duchy Originals, the organic food and drink company set up by Prince Charles, has just produced its first draught beer. The ale is made in Marston's Wychwood Brewery in Oxfordshire.

### News from Wetherspoons

**J**D Wetherspoon's pre-tax profits reportedly fell 13% in the last year because of the smoking ban, but the chain's sales, which

were down by 1.1% for the year as a whole, crept back up to 1.1% (year-on-year sales for the five weeks to 31 August) thanks to a focus on food.

JDW are still looking to expand but in what they describes as "*a meaningful correction*" on prices, they are asking vendors of possible new sites to drop their price by as much as 30%. Chief executive John Hutson described this as "*an attempt to establish some reality in a market where prices are generally falling*". They still hope to open around 30 new pubs this year.

Meanwhile in Devizes, Wiltshire, a new JDW pub has opened in a listed former department store. Oddly enough, it does not stock Wadworth's beers which are brewed in the town. Some local sources are wondering if this might have anything to do with Wadworth's opposing JDW's planning application. Surely not...

### News from the pub chains

**T**he Fair Pint campaign that I mentioned last time is struggling to get itself heard. According to the *Publican*, neither Enterprise Inns nor Punch Taverns, the UK's two biggest pub chains, will meet with them. Enterprises's Chief Executive, Ted Tuppen was quoted as responding, "*I have to ask myself whether a meeting with your steering group would add value to the debate and given the positions seemingly adopted by those who appear to represent your campaign, I regret I see little point*". I think that that is a 'no'.

Punch Taverns has cancelled payment of its final dividend following poor sales. Chief Executive Giles Thorley described it as a prudent measure to bolster the balance sheet by holding on to the cash. Mr Thorley put the blame for the poor trading conditions squarely

## THE JUNCTION TAVERN

CAMRA NORTH LONDON PUB OF THE YEAR 2008

## 10th BEER FESTIVAL

## 40+ CASK ALES

Special deals for CAMRA members.

Beer list & tasting notes available.

Heated beer garden. Smoking area.

Fresh, seasonal menu changes daily. Bookings advisable.

**Friday 10th – Sunday 12th October '08**

101 Fortess Road, Kentish Town, London NW5

Tel. 020 7485 9400

[www.junctiontavern.co.uk](http://www.junctiontavern.co.uk)



# Exceptional

## BRONZE MEDAL WINNER STRONG BITTER CATEGORY

"S.A Gold is a refreshingly hoppy, premium golden ale brewed to 4.7%. The beer is late-hopped using Cascade and Styrian Goldings, giving it complex and refreshing citrus aromas and flavours. It's delicious on its own and also makes a great accompaniment to food."

*Bill Dobson, Head Brewer*



Please enjoy responsibly

[www.sabrain.com](http://www.sabrain.com)



on Chancellor Alistair Darling. Punch has £295 million worth of bonds which are due for repayment in December 2010 and the more gloomy analysts are suggesting that no further dividends will be paid until then. Let us all hope that they are wrong and that the trade will pick up well before then. The move led to a run on Punch's shares, with their value having reportedly now fallen 80% since May 2007. This had a knock-on effect for Enterprise (down 8.8%) and Mitchells & Butler (down 5.5%).

The Orchid Group has won an industry first with the news that it is set to become the first pub company in the UK to sell cask ale which has been certified with the Red Tractor logo. The beer in question is Wells and Young's Young's Bitter. The Red Tractor certification, administered by Assured Food Standards (AFS), signifies that the ale has

been brewed in the UK using ingredients grown on farms to the very highest standards and has been checked and verified by professional independent inspectors.

### And finally...

The smoking ban didn't just affect pubs, it seems. Dry cleaning company Johnson Service Group has reported an 80% drop in profits which it blames on the ban.

The Queen was recently sent 2,000 pints of beer when one of her royal residences was confused with a nearby pub. Royal staff had no record of any such order when a lorry turned up at Windsor Castle on 10 September with 12 barrels of lager ahead of England's World Cup qualifying match with Croatia. A quick telephone call revealed the mistake: the booze had been destined for the Windsor Castle pub

five miles away in Maidenhead.

CAMRA's Regional Director for Greater London, the redoubtable Steve Williams, has his own blog spot called *the Beer Justice* (Steve is a JP!). I found it to be a very good read and I think that most London Drinker readers will likewise. Indeed, if he wasn't bigger than me, I would probably lift items from it for this column. Have a look on [www.beerjustice.blogspot.com](http://www.beerjustice.blogspot.com) at Steve's thoughts about a certain brewery site in South West London – it isn't the one you might assume.

Tony Hedger

Escape from it all!

Visit the Travel Pages at

[www.londondrinker.org.uk](http://www.londondrinker.org.uk)

## THE ELEANOR ARMS, BOW



The Eleanor is a traditional pub sticking to the traditions of good hospitality. A seafood spread is served on Sunday afternoons and during winter we have a warm, welcoming fire. The pub is only two minutes walk from the Gunmakers Gate of Victoria Park, London's second biggest park, and the Hertford Union Canal. Walkers are always welcome to pop in, relax and quench their thirst.

A traditional Shepherd Neame pub. Why not call in, Frankie and Lesley extend a warm welcome.

- ◇ Secluded garden
- ◇ Smoking facilities
- ◇ Disabled-friendly
- ◇ Traditional pub games including pool, darts and shove ha'penny



460 OLD FORD ROAD, BOW, LONDON E3 5JP TEL: 020 8980 6992

## Cider and perry in London

October is CAMRA's annual Cider and Perry Month. Drinkers could not miss the increasing focus on cider and perry in our pubs in recent years but, sadly, the majority of it cannot be classified as real, usually as it is has been pasteurised and carbonated. Nonetheless it has raised the profile of the real stuff, so where can you get some of that in the Capital?



Well, starting off with one in central London and this year's winner of the London Cider Pub of the year, there is the **Harp**, 48 Chandos Place, WC2, just up from Charing Cross station. It normally has a cider and a perry available. Near Victoria is the **Chimes of Pimlico**, 26 Churton Street, SW1. This restaurant has a small area set aside for drinkers and usually serves Biddenden and Weston's cider.

Joint winners of last year's London Cider Pub of the year, the **Pembury Tavern**, 90 Amhurst Road, Hackney E8 (Hackney Downs & Hackney Central) has an ever changing cider on handpump

from a wide range of small producers and the **Wenlock Arms**, 26 Wenlock Road, N1 (Old Street) also has a cider, often Thatcher's, again on handpump.

The **Dartmouth Arms**, 35 York Rise, NW5 (Gospel Oak) is a large pub with a draught cider and a good range of bottled ciders from different small producers. The **Oakdale Arms**, 283 Hermitage Road, Harringay, N4 (Seven Sisters or Manor House) normally has at least one draught cider.

South of the river, near Borough tube, the **Royal Oak**, 44 Tabard Street, SE1 is Harvey's only London pub, with Thatcher's Heritage on handpump. When the farmers' market is open most Fridays and Saturdays, the **New Forest Cider Stall** at Borough Market, 8 Southwark Street SE1 (London Bridge) is a must to visit; you can buy cider to take away or drink while at the market, and mulled cider during winter.

East of Croydon, the **Claret**, Lower Addiscombe Road (Addiscombe tram stop) has a cider or two available; ask for them as they are dispensed from the cellar. Over in Brentford, the **Maggie & Crown**, 128 High Street, has one ever-changing cider straight from the barrel. The **Bricklayer's Arms**, 32 Waterman Street, Putney and the **Trafalgar**, 23 High Path, South Wimbledon both serve a real cider from a handpump. There are of course Wetherspoons and others too. More info can be found on an excellent website:

[www.ukcider.co.uk/wiki/index.php/Cider\\_Pub\\_Guide](http://www.ukcider.co.uk/wiki/index.php/Cider_Pub_Guide)

Keep a look out in October for other events such as apple pressing!

*Ian White*

## CAMRA's definition of real draught cider and perry

### Ingredients

- ◆ The liquid content before fermentation must consist entirely of non-pasteurized apple (cider), or pear (perry) juice.
- ◆ No apple or pear juice concentrates to be used.
- ◆ Normally, only the sugar naturally available in the fruit should be used to cause fermentation, but in years when the level of natural sugar in the fruit is low, the addition of extraneous sugar to aid fermentation is acceptable.

### Process

- ◆ No pasteurization to take place during the production process in relation to the cask

product.

- ◆ No added colourings to be used.
- ◆ No added flavourings to be used.
- ◆ There must be no artificial carbonation for draught products.
- ◆ Sweetener may be added to fully fermented cider or perry to make it sweet or medium.
- ◆ The addition of water is permitted to bring the alcoholic content of the cider or perry down to the level required by the producer. Ideally, however the minimum juice content should not be lower than 90% volume.
- ◆ No micro filtration allowed (this takes all the yeast, leaving a 'dead' product).



## Borough Market celebrates Apple Day

The Borough Market is a registered charity, run by its trustees, many of whom live in the parish of St Saviour's (Southwark Cathedral). This year Borough Market, the Lions part theatre company and Southwark Cathedral are uniting this year to celebrate Apple Day on Sunday 26 October. There will be cheeses, meats, breads, cakes and pies, cider, calvados, apple juice, mountains of apples of every imaginable variety and many more autumnal treats. Traders will be at Borough Market from 11am to 5pm. The market will be full of music and festivity celebrating apples and autumn throughout the day. [www.boroughmarket.org.uk](http://www.boroughmarket.org.uk)

Apple Day will be marked by Southwark Cathedral in the Choral Eucharist at 11am. Together with Borough Market stallholders, the Flower Guild will deck the Cathedral with special displays using apples and market produce. The Eucharist is a public Service open to everyone and will be followed by 'Fun with Apples' (including apple-bobbing) provided by the Ministry of Fun in the churchyard. The public restaurant, the Refectory will be celebrating Apple Day with a bespoke appley menu.

[www.southwark.anglican.org/cathedral](http://www.southwark.anglican.org/cathedral)



The Lions part will perform an October Plenty harvest celebration, mixing ancient seasonal customs and theatre with contemporary festivity. Their programme begins with a procession from Shakespeare's Globe to Borough Market, followed by games and activities from 12.30 and the performance in the market at 1.30. [www.thelionspart.co.uk](http://www.thelionspart.co.uk)

The clocks go back on Sunday 26 October – make sure you change your clock to avoid disappointment.

### WFCS&SC presents **BEERS FROM THE FRINGE**

*a celebration of  
Celtic Ales*

November

Thursday 20th (5-11pm)

Friday 21st (12noon-11pm)

Saturday 22nd (12noon-11pm)

at the Waltham Forest Town Hall

Social Club, Town Hall Grounds,

Forest Road, Walthamstow, E17 4JF

**20+ Beers and Ciders**

*Food available*

**Music Friday & Saturday evenings**

ADMISSION FOR NON-MEMBERS

BEFORE 8PM - £1, AFTER 8PM - £2

Normal club rules apply. Tel: 020 8527 3944



### THANET CAMRA **CIDER FESTIVAL**

AT

**THE CHURCHILL TAVERN  
RAMSGATE**

**FRIDAY 17TH & SATURDAY 18TH  
OCTOBER 2008**

**50 CIDERS & PERRIES TO CHOOSE FROM  
LIVE MUSIC AND CIDER RELATED FOOD**

**ADMISSION £1 INCLUDING GLASS\***

**OPENING TIMES: FRIDAY 5PM-11PM**

**SATURDAY NOON-11PM**

[WWW.THANETCAMRACIDERFESTIVAL.ORG.UK](http://WWW.THANETCAMRACIDERFESTIVAL.ORG.UK)

\* FREE TO CAMRA MEMBERS

# 15th Croydon & Sutton Real Ale & Cider Festival



**CAMPAIGN  
FOR  
REAL ALE**



**Wallington Hall**

**9th - 11th October 2008**

## **Over 60 Real Ales and 15 Ciders and Perries**

Thursday 9 <sup>th</sup>	Noon - 4pm	<b>FREE</b>
	4pm - 10:30pm	<b>£2</b> Members £1
Friday 10 <sup>th</sup>	Noon - 4pm	<b>FREE</b>
	4pm - 10:30pm	<b>£3</b> Members £2
Saturday 11 <sup>th</sup>	11am - 6pm	<b>FREE</b>

Last evening admission 10pm. Right of admission reserved

Wallington Hall  
Stafford Road  
Wallington  
Surrey SM6 9AQ

See our website for further  
details  
[www.croydoncamra.org.uk](http://www.croydoncamra.org.uk)

# THE TENTH TWICKENHAM BEER & CIDER FESTIVAL



**CAMPAIGN  
FOR  
REAL ALE**



from the Richmond & Hounslow  
Branch of CAMRA

(Around 70 draught beers plus ciders, perries and foreign bottled beers)

## at YORK HOUSE

Richmond Road, Twickenham, TW1 3AA

5 minutes from Twickenham Station

Bus Routes 110, 267, 281 and 290 to Twickenham King Street

Bus Routes 33, 490, H22, R68, R70 pass the entrance to York House

### Opening Times

Thursday 23rd October	-	5.00pm to 10.30pm
Friday 24th October	-	11.00am to 10.30pm
Saturday 25th October	-	11.00am to 10.30pm

Admission £1.50 (£1.00 Friday lunchtime)

CAMRA members 50p (FREE Friday lunchtime)

[www.rhcamra.org.uk](http://www.rhcamra.org.uk)

**Families welcome until 6.30 p.m. Friday and Saturday**



# Beer festivals



**CAMRA & Wenlock Autumn Beer & Cider Festival**  
the upstairs room at the Wenlock Arms, Wenlock Rd, N1  
(nearest tube: Old Street)

**Fri 24th Oct: 4pm-10.30pm; Saturday 25th Oct: 12 noon-10.30pm**

**Come and celebrate CAMRA's Cider month with a great range of ciders available at the event. Admission Free**

**For further details visit the website: [www.camranorthlondon.org.uk](http://www.camranorthlondon.org.uk)**

## Woking Beer Festival, November 2008

The 15th Woking Beer Festival will take place on Friday 7 and Saturday 8 November at Woking Leisure Centre, organised by Surrey/Hants Border CAMRA, Woking Leisure Centre and Woking Borough Council. More than 70 real ales are planned to be available, plus ciders, perries and imported beers.

There are three sessions: Friday and Saturday evenings from 6pm to 11pm, and Saturday lunchtime from 11am to 3.30pm. Entrance is strictly by ticket only, price £7.00, available in advance from Woking Leisure Centre, Woking Park, Kingfield Road, Woking, Surrey GU22 9BA. Cheques payable to Woking Borough Council + SAE please, or phone the credit card hotline (£1 booking fee) 01483-771122 8am-9pm seven days a week.

The admission price includes a pint lined glass with commemorative logo and also a festival programme. CAMRA members get a free pint (up to 5% ABV) on presenting their current membership card at the membership stand. Every session will have a recital on the famous Woking Wurlitzer Organ and there is a live band each evening. Soft drinks and food will be available at all times.

Woking Leisure Centre is less than 15 minutes walk from Woking station, which has rail links to just about everywhere, and there's even a map of the area on the back of the ticket to show you how to get there! Read the Beer Festival web page at [www.wokingbeerfestival.co.uk](http://www.wokingbeerfestival.co.uk)

CAMRA volunteer staff should e-mail [wbfstaffing@yahoo.com](mailto:wbfstaffing@yahoo.com), complete the staffing form at [www.thelinehans.me.uk/wbfstaffing](http://www.thelinehans.me.uk/wbfstaffing) or write to: WBF Staffing, 30 Hedgerley Court, Woking, Surrey. GU21 3LY

## Get Fired Up!

...A russet amber ale with a gentle, spicy hop character and pleasant maltiness.



Traditionally brewed, using only the finest malted barley and freshest whole hops.



Edwin Road, Twickenham, TW2 6EP  
Tel: 020 8941 1820 Mob: 07779 61781  
[www.twickenham-fine-ales.co.uk](http://www.twickenham-fine-ales.co.uk) [sales@twickenham-fine-ales.co.uk](mailto:sales@twickenham-fine-ales.co.uk)



Enjoy Hampshire's premier real ale whenever you want! We are now delivering into Greater & Central London at least twice a week, for latest promotions on our core and seasonal ranges call us today...

**Itchen Valley Brewery Limited**

Prospect Commercial Park, Prospect Road, New Alresford, Hampshire, SO24 9QF

Tel: 01962 735111 Fax: 01962 735678

Email [info@itchenvalley.com](mailto:info@itchenvalley.com) Web [www.itchenvalley.com](http://www.itchenvalley.com)

**Great Beers \* Real Service \* Happy People \***

## Pig's Ear Beer and Cider Festival celebrates its Silver Jubilee

The 2008 Pig's Ear Beer and Cider Festival will be the Silver Jubilee event. Dates are Tuesday 2 to Saturday 6 December. Festival Organiser, Derek Jones says: "Pig's Ear has become one of East London's most celebrated events. We are proud that this year's is our 25th and delighted that it is being held for the third successive time at the Ocean in Hackney. This is a superb venue."

The Festival will offer more than 100 real ales with a range of farmhouse ciders and perries. The choice of foreign and bottled beers will be exceptional and there will be quality food stalls, games and beer memorabilia.

Pig's Ear is organised by the East London and

City (ELAC) Branch of the Campaign for Real Ale (CAMRA). ELAC Chairman, Jon Russell Brown comments: "ELAC is looking forward to continuing strong support from Hackney Borough Council and the people of Hackney for the festival. They maintain the renowned East End reputation for helpfulness and friendliness. Joining them are the hundreds of festival-goers who come from far and wide – from Jamaica to Johannesburg to Japan."

Like any CAMRA festival, Pig's Ear needs volunteers. Would willing CAMRA members please contact Vanda Green 020-8806 6517, or Andy Kinch 07813 622938 (evenings only).

### PIG'S IS A TASTY EVENT

Have you ever fancied learning how to taste beer? This year, on Saturday 6 December at the Pig's Ear Beer & Cider Festival, there will again be a session for CAMRA members interested in becoming engaged with CAMRA's tasting panels. These cover all parts of the UK and so you don't have to live in London to get involved.

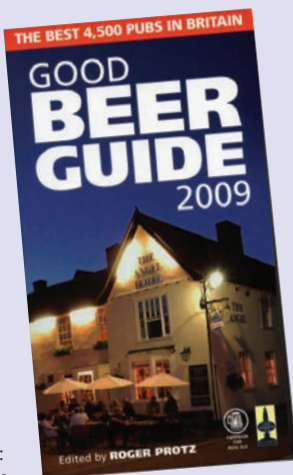
The session will cover the flavours in beer, how different ingredients produce different beers and the various beer styles. It starts at noon and will

last about 3 hours, which will then give plenty of time for people to test their newly found skills at the festival afterwards. If you are interested, contact Chris Cryne at [ccryne@supanet.com](mailto:ccryne@supanet.com) before 10 November, stating your address and membership number. Places are limited and will be on a first come, first served basis. The cost is £10, which includes the beer (yes you do get to drink some) and the entrance fee to the festival. For details of the Pig's Ear Festival, see above, page 58 and [www.pigsear.co.uk](http://www.pigsear.co.uk).

## 2009 GOOD BEER GUIDE NOW ON SALE

The 36th edition of CAMRA's annual Good Beer Guide features 4,500 real ale pubs in Britain chosen by local CAMRA branches for the consistently high quality of their real ale. More than a quarter of these pubs did not appear in the 2008 Guide. The new Guide also profiles a total, now, of 668 UK breweries including 73 new ones, brewing altogether more than 2,500 different real ales. No longer included, however, is any attempt to catalogue the many non-brewing pub companies, the survival of many of which may now be uncertain.

Announcing its publication on 11 September, editor Roger Protz said: "CAMRA's Good Beer Guide is Britain's original number one, independent guide to good beer and pubs. The CAMRA members work tirelessly to survey the pubs each year to make sure the reader gets the most



updated guide to the best pubs in Britain. I would personally like to thank them for all of their hard work and support."

For each pub the Guide gives details of food, history, architecture, transport links, beer gardens, accommodation, disabled access and facilities for families. This year's introductory section highlights the boom in craft brewing, some landmark pubs, the different beer styles and innovations by the brewing industry to combat global warming. It also draws attention to the damage caused by the government, especially through the latest tax increases.

The Good Beer Guide 2009 is available priced £14.99 directly from CAMRA (£12.99 for CAMRA members) or at all good book shops. Further discounts also available online via [www.camra.org.uk/shop](http://www.camra.org.uk/shop).



## West Herts Sports & Social Club

8 Park Avenue, Watford, WD18 7HP

### Opening Times

Thurs 4pm - 11pm

Fri 11am - 11pm

Sat 11am - 11pm

### Food Available

Thurs 5pm - 9pm

Fri 12pm - 3pm/ 5pm - 9pm

Sat 12pm - 3pm/ 5pm - 9pm

**£2 entry**

Free to CAMRA & West Herts Sports & Social Club Members





*A genuine Free House featuring a selection of the very best in Cask Ales, Traditional Cider and Perry*

- Mild always available
- Liefmans Kriek on draught
- Wide selection of continental bottled beer including Duvel and Chimay
- Function room free to CAMRA members
- Thursday night is Quiz Night
- Jazz piano Sunday afternoons
- Jazz/Blues every Friday and Saturday evening
- Open daily from midday



**CAMRA  
NORTH LONDON  
PUB OF THE YEAR  
1995, 1996,  
THE MILLENNIUM 2000  
AND 2004**

**26 Wenlock Road  
London N1**

020 7608 3406

Nearest Tube stations are Old Street (exit 1) and Angel. Wenlock Road is off City Road via Windsor Terrace  
<http://www.wenlock-arms.co.uk/>



## The Ailsa Tavern

263 St Margarets Rd, Twickenham TW1 1NJ  
020 8892 1633

[www.ailsatavern.com](http://www.ailsatavern.com)

Friendly, relaxed family-run local pub which has a little bit of everything good!

Great tasting real ales prepared by award-winning cellarman

Wide selection of world wines

Award-winning chef offering a Mediterranean food menu daily

Enclosed beer garden

Close proximity to Thames Path

15 minute walk to both Richmond and Twickenham stations

*The Ailsa Tavern - Twickenham's best kept secret!*



## THE SPEAKER

A real pub in the heart of London - no music, screens or fruit machines, but we do have atmosphere

4 real ales always available

Youngs Bitter, Shepherd Neame Spitfire and two guest beers from a portfolio of over 200

**October 27th for one week  
HALLOWEEN ALES**

**Nov 3rd  
ARMISTICE ALES**

Beers for Remembrance Week

We will open for Sunday 9th November  
from noon to 6pm

**Sunday 7th December**  
Open from 2pm - 9pm for the annual turning on of our Christmas lights.  
Complimentary mince pies and port at 5pm

More info: [www.pleisure.com](http://www.pleisure.com)

Opening hours: Monday - Friday: noon - 11.00pm  
Closed Saturdays and Sundays

**The Speaker, 46 Great Peter Street, Victoria  
London SW1P 2HA Tel: 020 7222 1749**

## THE 'TRAF' IS OUR PUB OF THE YEAR

**T**he Trafalgar free house in Merton (23 High Path, a short walk from South Wimbledon tube station), run for the last three years by David Norman and Karen Wood, has emerged as CAMRA Greater London's Pub of the Year for 2008 after teams of judges visited the winners from each of the twelve London CAMRA branches incognito to sample their beer and hospitality.

Steve Williams, London Regional Director said, *"David and Karen have done a superb job in making the Traf a community pub where everyone is welcome. A tiny pub in a back street, it's the sort of place that London is increasingly losing nowadays. Up to six beers, including a house beer brewed just outside London, are delivered through beautiful old handpumps and there is still the public bar with its darts board. But that doesn't mean it's dated; as well as jazz on Sunday afternoons and a range of other live music, there are televised sports and even Wifi facilities. We are really pleased to give the award to such a wonderful pub."*

The 'Traf' dates from the 1860s. Its name reflects the fact that Nelson once lived locally. Nelson memorabilia decorate the walls and Trafalgar Day is celebrated every year. Its beers include the exclusive Thru'penny Hop bitter and often a mild and it holds beer festivals in April and

October. It also serves a real cider or occasionally a perry.

The award plaque will be presented at 8pm on Thursday 2 October. The Traf now goes forward to the national competition to be judged against the best pubs in the rest of Britain.



## CAMBERWELL PUB LISTED IN NEW GOOD BEER GUIDE

**I**n the new, 2009 Good Beer Guide, a pub in Camberwell appears for the first time. Hoopers, on Ivanhoe Road, is a community local, the kind of pub once common throughout London but now a dying breed. It was formerly the Ivanhoe but had fallen on hard times when the present owner, Jamie Hooper, chanced upon it in an auctioneer's catalogue. *"I visited it two days before the sale and, although I was only allowed to view the public areas, thought that it was a lovely old building that could be brought back to life. It has been much harder task than I envisaged! My wife and I, with the help of some hard-working local tradesmen, worked for three months to refurbish and renovate before reopening. I introduced real ale, and we have a rotating list of beers sourced from Britain's microbreweries. We sometimes even visit and collect*



*the beer direct from the brewery."*

The pub celebrated their achievement with a 'Best of British' beer festival from 11 to 14 September. All the beers chosen had won top prizes at this year's Great British Beer Festival and Small Independent Brewers Association National Competition, including CAMRA's Supreme Champion, Triple fff Alton's Pride.

Hoopers have also started to put on live music at weekends, and offer the venue for functions. Mrs Vivien Hooper added *"These days, it is not enough to be a friendly, clean bar. You need to consider what the public want. We have introduced food at reasonable prices, but freshly made on the premises from good quality ingredients. Pubs like ours will only survive if we are responsive to what the local community is looking for. They have plenty of alternatives for their leisure time if we are not."*

# The Star

**17 Church Street  
Godalming, Surrey**

*4 minutes from Godalming station  
on the Waterloo to Portsmouth line*



- Open all day, seven days a week
- The Star is 175 years old and now offers a whole range of cask ales from around the country, plus eight draught ciders and two dozen bottled ciders as well as our extensive Belgian beer list.

## **Prepare yourself for our Black Country Halloween Beer Festival**

**Starts Friday 31st of October**

**Now the CAMRA Surrey & Sussex  
Cider Pub of the Year 2008**

*Our delightful garden  
with heated canopy  
and rear garden room  
are open throughout  
the year.*

**More details available  
online at:  
[www.thestargodalming.co.uk](http://www.thestargodalming.co.uk)**





## CHEERS AT THE CLARET

### 21 years for Addiscombe landmark pub in CAMRA's Good Beer Guide

Manager John Rand is celebrating his pub's entry in the recently published Good Beer Guide 2009, making it 21 years in a row! Members of the Croydon and Sutton branch of the Campaign for Real Ale have, once again, voted the Claret free house into the annual guide. John's achievement is being marked with the presentation of a special award by CAMRA recognising his contribution to the local beer scene.

Branch chairman Dave Lands said "This is a

really magnificent achievement, matched by only a handful of publicans in the UK. The Claret is a true local pub, offering an ever changing choice of six quality real ales, mostly from local and southern breweries. For 21 years the Claret has been a beacon of excellence, serving top quality beer and cider in a friendly and welcoming environment."

Handily located metres from Addiscombe tram stop in the Lower Addiscombe Road, over the years the Claret has served more than half a million pints of Palmers IPA from the Bridport brewery. Regulars know to check the chalkboard listing beers that are 'coming soon', and word spreads as new beers become available.

## HAT TRICK FOR THE NIGHTINGALE

August has been a great month for customers and staff at the Nightingale in Balham. First, it won the *Morning Advertiser* London Community Pub of the Year, becoming one of eight finalists for Best Community Pub for 2008. By the time this issue of London Drinker appears, the Great British Pub Awards will have been held on 18 September at the Park Lane Hilton. Thumbs and fingers crossed!

Second, the *Publican* magazine has given one of its Proud of Your People awards to Joanie Clement, who has worked at the Nightingale for 30 years and was nominated by the pub's managers Lee and Keris De Villiers. Despite being over retiring age, Joanie regularly takes part in the Nightingale's famous 20 mile charity walks. Lee commented, "Without her, the Nightingale would not be the same. She loves her job and everything about the pub. She works here because she wants to

– not because she has to".

Finally, the Nightingale won Best Blooming Pub/Restaurant or Hotel in the Wandsworth in Bloom Competition for the second year in a row.



## THE RAMBLER'S REST

The Rambler's Rest, Mill Place, Chislehurst, has been voted *Pub of the Season* by the South East London Branch of CAMRA, the Campaign for Real Ale, for the quality of its real ales and for maintaining the look and feel of a traditional pub, rather than converting into a restaurant-style gastropub.

"In an area where many of the pubs place an emphasis on their food", said Alan Jepson, chairman of the branch, "the Rambler's Rest is an example of how a pub should be: traditional, no-nonsense, no fancy food and two separate rooms. A great village pub!"



Landlord Michael Butler, presented with his award on 10 July, has been running the pub for five years and is keen on his real ales, always offering four regular bitters plus a varying guest ale. The friendly staff always offer a warm welcome and the pub's characterful split-level layout and pleasantly leafy

location (on the edge of Chislehurst Common) make you feel you are a hundred miles from London.

Congratulations go to Michael on an excellent achievement.

Neil Pettigrew



# Young's Bitter

Decades of  
brewing expertise  
have gone into  
making Young's Bitter  
a favourite of those  
who value great cask ale.  
Available on discerning bars  
across the capital -  
you'll find the great pint  
you've always  
enjoyed





## The Horseshoe, Southwark

In case you're wondering, the flag above belongs to Mongolia. You see, tucked away beneath Guy's Hospital and 5 minutes walk from London Bridge Station I've found a little bit of Mongolia! Let me explain.

In all other respects, the Horseshoe is a traditional Brakspear's pub serving its local working and residential Snowfields area real ale - and here is the clue. As you would expect, the hostelry is popular with workers and medics from the hospital but there is a university on the doorstep attended by some 200 Mongolian students and the Horseshoe is also their pub of choice. Many of the bar and kitchen staff are of that nationality; you can tell by their courtesy and quiet manners. There is always at least one Mongolian dish on the menu, except for Mondays when a whole mouth-watering range is offered. To top all that Monday night is official Mongolian Karaoke Night which apparently has to be seen to be believed. Well, I reckon I've found a 'London First' with this one.

But what of the pub itself? Melior Street is a turning off St. Thomas's Street. Just walk down from Borough Market end keeping to the right hand side of the road, following the blue railings. Although not quite at the end of a cul-de-sac, at first sight this corner pub gives that appearance. It's an attractive building bedecked with turquoise awnings and with a forecourt festooned with potted plants and shrubs. Inside, the atmosphere is warm and cosy with plenty of nooks and crannies. Luckily for the pub (and 'smoking sinners') there is an extensive part-covered garden patio as well as a roof garden. They are also blessed with a separate function room.

Peter Collie has been the tenant for the last eleven years and his business partner, Dave Smith ('Murphy'), runs the pub on a day-to-day



basis as full time licensee. As you would expect, Brakspear's is the regular draught ale but there is a second choice of either London Pride or Bombardier. Apart from these beers they always feature a seasonal guest beer which changes up to three times during the week. On my visit I was tempted by a pint of Robinson's Dizzy Blonde -

perfect for that summer's day. As you might guess, the Cask Marque sign is displayed. There is also a surprisingly varied wine menu which one might more likely expect in the Market Porter up the road.

The food menu offers a great range of starters, mains and desserts as well as sandwiches. Prices range from £4.95 for the ham, egg and chips to £9.95 for the rib steak. Oh, and just in case you're not too familiar with Mongolian cuisine, the style is very noodle/dumpling/pancake based with portion prices varying from £2.50 to £4.95 each. I am told they hit the spot.

During my brief lunchtime visit both the staff and regulars were very friendly and the darts team take their game seriously! There are regular quizzes on Thursday nights, and a traditional English folk acoustic jam session on the first Sunday of the month. Every couple of months, there is also a somewhat less-traditional '60s Soul and Northern Soul Night.

The Horseshoe is open from 12 midday to 11pm Monday to Saturday and midday to 6pm for Sunday lunchtimes. So, if you fancy something really different and wish to escape from the hurly burly tourist trap that has become Borough Market, I suggest a detour to the Horseshoe would be a wise move.

On a final note I'll say, "Come back Genghis Khan, all is forgiven!"

Find out more on the Horseshoe website:  
[www.horseshoepubse1.co.uk](http://www.horseshoepubse1.co.uk)  
Peter Tonge





**Dear Editor**

**First Kenley & Caterham Beer & Cider Festival**

It was with great regret that, after our extensive publicity, including that on page 23 of the Aug/Sept *London Drinker*, our planned three day Festival could not take place. Of course there was insufficient time to publish the cancellation in your magazine.

We did however open the Clubhouse and Bar for a minimum of six hours on each of the three days and had the pleasure of welcoming the CAMRA members who braved the appalling weather to visit our historic and somewhat remote location. The Club members present were able to enjoy a chat and a drink (or two) of our regular nectars with them and to be enlightened on CAMRA, special brews and beer festivals.

If any of your readers would like to come and have a drink with us at midday on a Sunday we would be glad to see them if they telephone in advance to me on 020 8668 3408 or to Club Chairman Bert on 01883 347595. The Clubhouse and bar are open every Sunday from 12 to 3pm.

*Mike Roach*

*Chairman 661 Branch Royal Air Forces Association*

**Dear Editor**

**Let's hear it for Sam's**

I don't think that Sam Smith's receive enough praise. In these days of credit crunch and inflation, it is great to walk into one of Sam's beautiful old pubs and buy a lovely pint of OBB for £1.86. If only some of our other, so called independent brewers, were on the same wavelength instead of jumping on the price increase bandwagon. Even JDW can't match Sam Smith for value.

*Mick Daley*

*(Sam Smith's refuse to stock any alcoholic products associated with mass media advertising for which customers would otherwise be paying! – Ed)*

**Dear Editor**

Recently after abandoning the badly organised National Anti F. and R. demo from London Bridge to Trafalgar Square at Temple tube, the Big Red Band was ready for a few swifties. We meandered up through the side streets leading to Fleet Street, Aldwych and the Strand only to find all the pubs closed - too near the City to make any money on a Saturday afternoon. We hit the Aldwych and theatre land running the afternoon matinees. The big pub on the corner of the Strand and Aldwych looked too touristy for dossers like us. Yes most of us are retired but I suddenly remembered from my past drinking experiences a small, unpretentious, easily missed next door but one pub but I couldn't imagine what it was doing now in the pub game. So lined the band up outside and went in. It was virtually empty. I approached the bar and noticed

that it was a Sam Smith's joint. Still not satisfied I asked the operatives the price of their fare but was not expecting their reply. For a pint of Sam Smith's draught bitter it was cheaper than Wetherspoons and well under £2. That takes some doing in the West End. I rushed outside and marshalled the thirsty musicians in. They were enthralled by the place.

The landlord didn't sell lager, only Sam Smith's. He said that he didn't want to entertain the lager louts of the boards. They also did nice food at reasonable prices. This pub is named the Lyceum Tavern and is part of the theatre, as we discovered when the matinee performance ended and the punters came storming in but not staying too long. We ourselves enjoyed the beer, which was delicious, and probably overdid it. This is a highly recommended joint. Although I don't venture down the West End much these days, it certainly brought back old memories to visit unexpectedly a place of previous drinking pleasure. In fact I've been told that there are several pubs around the Holborn area that are cheaper than Wetherspoons which I have to admit I visit every day. It would make a change to jump on a Waterloo bus with my Freedom pass for a few cheapies in the Lyceum Tavern again. Oh life gets better as you get older, unless Boris knocks all our freebies on the head! Cheers!

*Roger Hughes*

**Dear Editor**

I am not a member of CAMRA; however, I was wondering if you might be able to help. I am researching into what was the Winchester Arms on Winchester Road near Swiss Cottage. It is now the Winchester Project. But from the years of around 1935-1955 it was called the Winchester Hotel, and in 1972 it is still referred to as the Winchester Hotel, but in 1974 and 1975 it was called the Winchester Arms.

Now that I have told you the building (21a Winchester Road, South Hampstead), I was wondering if any of your members have an old, or know where there is an old photo of this place as either the Winchester Hotel or Winchester Arms. My grandmother worked in the hotel for 4 years from 1935, before joining the land army. She sadly passed away, and I wanted an old photo which we can use to inform her old friends and family of her history.

I have been researching at the local studies group at the Camden Archives Centre, and the only thing I need now is an old photo. Am more than happy to pay for a copy. I have a recent photo, as the building is still there.

I hope you can help.

*Alex Raffle*

Join John & Heather at

# The Brewery Tap

*Winner of The Beautiful Beer Gold Award - Cask Marque Force 2008*



**Three rotating Real Ales (many from micro-breweries)**  
Fuller's London Pride and Adnams Bitter permanently and now we always stock mild ale and Aspall's Suffolk Cider.

- Traditional pub grub, home cooked and served every lunchtime
- Traditional Sunday Roast • Quiz on Mondays from 8.30pm
- Open all permitted hours • Digital juke box • Thursday night - Tapas

**COME AND MEET THE ASCOT BREWERY**

**Tuesday 14th October at 8pm**

68 High Street, Wimbledon Village SW19 (10 minutes walk from Wimbledon station)

**020 8947 9331**

**email: thebrewerytap@hotmail.com**

**THE LAND OF LIBERTY, PEACE  
AND PLENTY FREEHOUSE**  
**CAMRA National Pub of the Year**  
**Finalist 2007!**  
**Herts PotY 2006, 2007 and 2008!**



**Call us or  
see our  
website  
for more  
events**

- ❖ NEW Book Club monthly
- ❖ 6+ Real Ales inc. a dark beer
- ❖ 3 Real Ciders & Perry
- ❖ Real Log Fire in winter
- ❖ Great Bar Snacks All Day
- ❖ Free Soft Drinks for Drivers of 3 + beer drinkers

**Lunches Mon to Sat**  
**Hot Pasties only Sunday**  
**Lunchtime**

**Beer & Cider  
Festival**  
**Friday 31<sup>st</sup>**  
**Oct to Sun**  
**2<sup>nd</sup> Nov**

Long Lane, Heronsgate, Hertfordshire, WD3 5BS  
01923 282226

R4 Bus Direct from Watford & Rickmansworth  
2/3 mile M25 J17; 1 mile Chorleywood Stn

**See [www.landoflibertypub.com](http://www.landoflibertypub.com)**

For more information & beer list

THE WORLD



# INTERNATIONAL REAL ALE FEST

FEATURING UP TO 50  
THU 30 OCT

- GUEST BREWERS FROM JAPAN, AMERICA, AUSTRALIA & DENMARK
- IMPORTED BEERS FROM BELGIUM & POLAND
- LIMITED-EDITION CRAFT CIDERS FROM AMERICA
- AWARD-WINNING ALES FROM ACROSS THE WORLD

**wetherspoon**



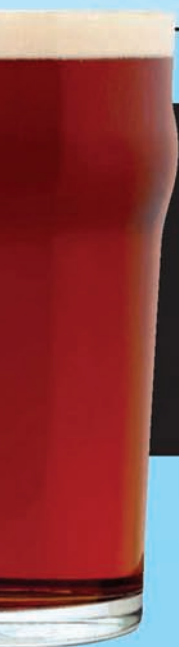


D'S BIGGEST



# ATIONAL -ALE TIVAL

50 ALES AND CIDERS  
— SUN 16 Nov



- SPECIALITY, SEASONAL, ORGANIC & FRUIT BEERS
- BEERS BREWED EXCLUSIVELY FOR  
J D WETHERSPOON
- ALE SELECTED IN PARTNERSHIP WITH  
CAMRA DRINKERS



Lloyds **No.1** Bar

## Dear Editor

Your readers may appreciate the letter I have sent to Tower Hamlets

**'Re Proposals for the Peacock Public House, Stepney. Ref PA/08/01168**

I would like to place on record my opposition to the plans for the demolition of the Peacock Public House, Stepney, London E1 0QW.

This is a well run family pub and has been providing a community service to local people for many generations. In an area that has seen most pubs of this nature closed down due to falling demand, the Peacock has become even more important as a place where locals of all ages and sexes can meet in a convivial atmosphere and drink alcohol (or not, as the case may be) in a supervised, managed and safe environment.

In contrast, I feel that there is very limited gain to the community from the proposals – private flats in the current economic climate are likely to be less sought-after and, in any case, there are plenty of other private developments on-going locally as well across all areas of the borough to meet demand. A further factor is the proposed height of the building which would I think dwarf neighbouring properties and limit light to them.

I came to this country as an immigrant in 1968

and I have lived in the borough for many years. I have worked with people from all over the globe and currently work in social housing in the borough. I strongly value the diversity of this borough and its ability to respect the many cultures present and maintain peaceful co-existence in the community. I do hope that due recognition will be given to the enormous amenity value of this establishment and that it will be allowed to continue to offer a genuine community service to local people for many years to come.'

*Mick O'Rorke*

## Dear Editor

There was an article in the Sunday Telegraph of 29 June about changes the Government has made to the business rate system. One of these is that owners of empty buildings no longer get rate relief and have to pay the full rates on the empty building. To quote from the article, *"The theory was that by saddling landlords with the full cost of business rates, roughly 40 per cent of the rental value of a building, they would be forced to attract tenants by either reducing rents or redeveloping. The reality is turning out to be very different. Empty buildings, many of which are nearing the end of their useful life, are being torn down early rather than offered to the market*

## THE HORSESHOE



- Monday nights - Mongolian Karaoke with menu to match
- Serious darts played here
- Regular quizzes on Thursdays
- Special 60s soul night every 2 months
- First Sunday of every month - traditional English folk jam session
- Live Sports on Sky and Setanta

*We are a traditional pub in Southwark, nestling in the shadow of Guy's Hospital and just a few minutes walk from London Bridge.*

*Apart from our cosy bars we've got a roof garden, patio area and function room.*

*Brakspear's is always on draught together with either London Pride or Bombardier plus always a seasonal beer changing through the week.*

*Our extensive bar menu is available all day every day from sandwiches to mains.*

*Visit our website [www.horseshoepubse1.co.uk](http://www.horseshoepubse1.co.uk)*

*See special feature on page 29.*

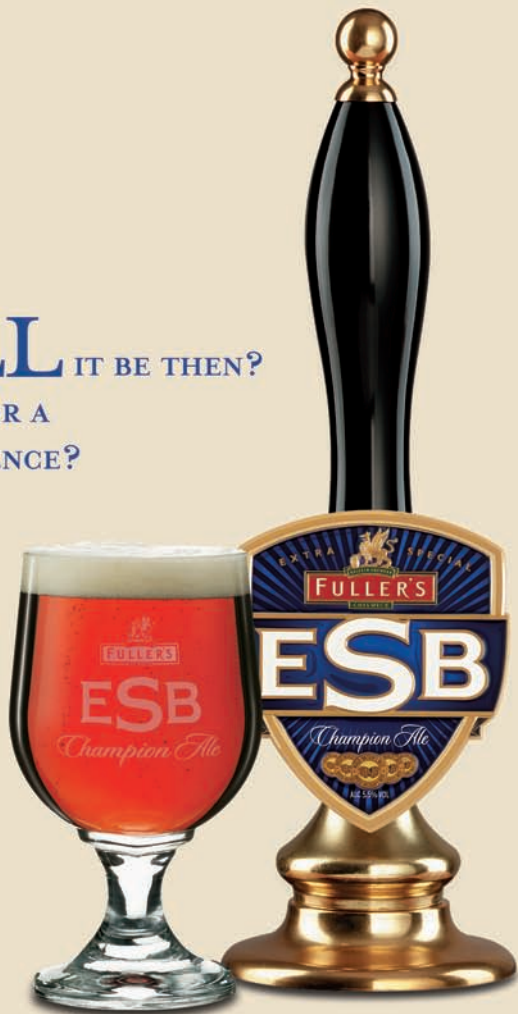


**26 MELIOR STREET, OFF ST THOMAS'S STREET, LONDON SE1 TEL: 020 7403 6364**

# WHAT'LL IT BE THEN?

A PINT OF THE USUAL, OR A  
LIFE-CHANGING EXPERIENCE?

Allow us to introduce you to an old friend. Fuller's ESB, three times Champion Beer of Britain, seen here in its smart new livery. Don't worry, the beer's just the same as ever. But if it's been a while, maybe it's time you reacquainted yourself with its uniquely rich, deliciously fruity flavour and long, satisfying finish. It could well be the happiest reunion of your life.



ESB. THE CHAMPION ALE.



*on short leases. Start-up companies, sole traders and small businesses that rely on this kind of lease are being denied exactly the low rents and flexible terms that the Government was trying to promote."*

According to the article, one unused pub that the owner had demolished to save paying rates on was the Lightning on the A40 in the London Borough of Ealing.

Colin Price

Dear Editor

I hope you're doing well and enjoying a cool summer; it will be 97 deg. F. in Houston today—thank heaven for air conditioning!

I was reading an article from the *New York Times* and came across a quote (which you probably know) that I find both true and poignant: "*When you have lost your inns, drown your empty selves, / For you have lost the last of England.*" - Hilaire Belloc.

Also, the article stated, "*A few years ago, the Guardian reported that for the first time since the Norman Conquest fewer than half the villages of England have a pub.*" I know I've read similar dire information in *London Drinker* - how sad! To me, the pub is the social centre of English life and to see it dwindle is an irreparable loss.

In case this article on pubs in Oxford is of interest to you, it might be online. It was in the Sunday NY Times, April 13, 2008, entitled "A Pub Crawl Through the Centuries" by Henry Shukman.

Judy Black

P.S. The Rice Univ. Graduate Bar, Valhalla (mentioned in my local pub crawl article on your Travel Pages) recently had Young's Double Chocolate on draught in mint condition. Needless to say, the cask went quickly! The pub sold 12 oz. glasses of that for \$2.00, a real bargain!

Dear Editor

Good news for Tony Bell and his Campaign for Cool Bottoms! Last month I paid a visit to the Anglesea Arms in Selwood Terrace, SW7, to rehydrate after a hard day's work at the Great British Beer Festival in Earls Court. Chloe, the barmaid, took care to check the temperatures of the glasses before she selected one suitable to contain my well-earned pint.

The Hope on Tottenham Street, W1, also give their glasses a chance to reach a reasonable temperature before serving; except on a busy Friday night when they are so chock full of customers the glasses don't have time to cool!

Kimberly Martin

Dear Editor

In the June 2007 *London Drinker* you published an article by Kim Rennie about Hampstead pubs. One of the pubs he mentioned was the Magdala which achieved notoriety in 1955 when Ruth Ellis, the last

woman to be hanged in Britain, shot and killed her estranged lover Derek Blakely outside the pub. This article led to correspondence from me and others about pubs with criminal connections. In my letter I stated that there used to be a plaque on the wall of the pub commemorating the event and claiming that some of the holes in the wall were from the bullets, although Kim suggests the holes were 'improved' or even created by a former landlord. I was recently talking to someone who worked nearby and went past the Magdala every day, occasionally popping in for a drink. He said that everybody he knew locally reckoned that the holes had been faked by the landlord.

Kim also said that the pub is named after Sir Charles Napier, the first Baron of Magdala, when it was Robert Napier who was created Baron of Magdala after winning the battle of Magdala.

Colin Price

Letters and articles for publication in  
*London Drinker* may now be  
submitted online at  
[www.londondrinker.org.uk](http://www.londondrinker.org.uk)

## THE ROYAL OAK



44 TABARD STREET, LONDON SE1

Tel - 020 7357 7173

Traditional Harvey's Sussex Ales  
Served in a Traditional Atmosphere

Open Mon-Fri 11am - 11pm

Food Available  
Lunchtime & Evenings

And now open Saturdays 6pm - 11pm  
also Sundays 12 midday - 6pm  
with traditional Sunday lunches

Nearest tube - The Borough

**AWARD-WINNING QUALITY CASK ALES & MARKET FRESH FOOD  
AVAILABLE AT EVERY ONE OF THE FOUR RED CAR PUBS  
IN THE CITY OF LONDON AREA**



## **THE CASTLE**

**– FURNIVAL STREET, EC4**

**THE BEST CHOICE OF CASK ALES  
IN THE SQUARE MILE**

## **THE SWAN**

**– GRACECHURCH STREET, EC3**

**FULLERS 'GRIFFIN TROPHY' FINALISTS, 2008**

## **THE BELL**

**– BUSH LANE STREET, EC4**

**'A GEM' – TIME OUT, 2008**

## **THE WHEATSHEAF**

**– STONEY STREET, SE1**

**'BOASTS THE BEST ATMOSPHERE  
OF ANY OF THE BOROUGH MARKET  
PUBS' – TIME OUT, 2006**



**RED CAR PUBS**  
SMALL BUT PERFECTLY FORMED



# Branch diaries

Welcome to our regular details of London CAMRA contacts and events. This is where branches can say what is happening in their areas that might be of interest to drinkers across London. Events for October and November are listed below.

Branch meetings and socials are open to all - everyone is welcome to come along.

## LONDON REGIONAL EVENTS

**October - Thu 2 (8pm)** Greater London Regional Pub of the Year award presentation. Trafalgar, 23 High Path, Merton SW19 - **Wed 29 (8pm)** Harp, 47 Chandos Pl, WC2. London Cider PotY award at 9pm (joint presentation with West London Branch PotY).

**November - Wed 26 (8pm)** London Liaison Committee (Regional co-ordination meeting for London Branches). Royal Oak, Tabard St, SE1. *Secretary: geoff@coherent-tech.co.uk*

## LONDON PUBS GROUP

*Jane Jephcote 020-7720 6327, jephcote@waitrose.com*

**October - Sat 18** Daytime crawl of Thornton Heath and Croydon: (12 noon) Thomas Farley, 61 High St, Thornton Heath; (12.45) Railway Telegraph, 19 Brigstock Rd, Thornton Heath; (1.50) Newton Arms, 175 Queens Rd, West Croydon; (3.20) Victoria Cross, 228 Bensham Lane, Thornton Heath; (4.40) Dog & Bull, 24 Surrey St, Croydon; (5.25) Royal Standard, 1 Sheldon St, Croydon; (6.15) Swan & Sugar Loaf, 1 Brighton Rd, South Croydon. Public transport will be required at times  
**November - Wed 12 (7.15 for 7.30)** Mtg. Royal Oak, Tabard St, SE1 (upstairs). All branches and members interested in pub research and preservation welcome.  
*Website: www.londonpubsgroup.co.uk*

## YOUNG MEMBERS GROUP

*London co-ordinator Matthew Black 07786 262798, youngmembers@selcamra.org.uk*

**October - Sat 10 (5pm)** Junction Tavern Beer Festival Social. 101, Fortress Rd, NW5. - **Wed 29** City Crawl including two Wetherspoons. Meet (7-8pm) Liberty Bounds 15 Trinity Sq, EC3.  
**November - Sun 16** Camberwell and Peckham crawl: meet (4pm) Bear, 296a Camberwell New Rd, SE5 and finish (from 6.30) Gowllett, Gowllett Rd, SE15 (SELCAMRA PotY 2005) for DJ Sunday.

## BEXLEY

*Martyn Nicholls 01322 527857 (H), contacts@camrabexleybranch.org.uk*

**October - Wed 8 (8.30)** Mtg. Volunteer, Bexleyheath - **Sat 11** Beer Festival staff outing to Land of Liberty, Peace & Plenty, Heronsgate. Depart 10am from Dartford Working Men's Club.  
**November - Wed 12 (8.30)** Mtg. Furze Wren, Bexleyheath.  
*Website: www.camrabexleybranch.org.uk*

## CROYDON & SUTTON

*Keith Worsfold 07872 009005, keith925603@btinternet.com*

**October - Thu 9-Sat 11** 15th Croydon Beer Festival. Wallington Halls, Wallington. See page 19. Full details and staffing form on branch website. - **Tue 28 (8.30)** Mtg. Dog & Bull, Surrey St Croydon.  
**November - Fri 7 (8.30)** Social. Moon Under Water, 1327 London Rd, Norbury. - **Tue 18** Sutton crawl: (8pm) Robin Hood, 52 West St; (9pm) Moon on the Hill, 5-9 Hill Rd; (10pm) Cock & Bull, 26-30 High St. - **Thu 27** Mtg. Windsor Castle, 378 Carshalton Rd, Carshalton.  
*Website: www.croydoncamra.org.uk*

## EAST LONDON & CITY

*John Pardoe 07757 772564, elacbranch@yahoo.co.uk*

**October - Fri 3 (8pm)** Pig's Ear mtg. Birkbeck Tavern, Langthorne Rd, E11. - **Thu 16 and Fri 17** 7th Piglet Beer Festival. Leyton Orient Social Club, Oliver Rd, E10. On **Friday** night at 9pm the club will be presented with CAMRA's National Club of

the Year Award. - **Mon 20 (8pm)** Pig's Ear mtg. Nightingale, Nightingale La, E11. - **Fri 31 (8pm)** Pig's Ear mtg. Birkbeck Tavern, Langthorne Rd, E11.

**November - Sat 1** George Ingleby's Wetherspoons beer festival pub crawl: (12 noon) Crosse Keys, 9 Gracechurch St, EC3; (1pm) Liberty Bounds, 15 Trinity Sq, EC3; (c2pm) Goodman's Field, 87-91 Mansell St, E1; 25 bus to Stratford for (c3.45pm) Golden Grove, 146-148 The Grove, Stratford E15; 257 to Leytonstone for (c4.45) Walnut Tree, 857-861 High Rd, Leytonstone; (c6pm) George, High St, Wanstead E11. - **Tue 4 (8pm)** Mtg. Birkbeck Tavern, Langthorne Rd, E11 - **Mon 10 (8pm)** Pig's Ear mtg. Nightingale, Nightingale La, E11 - **Tue 11** N16 Stoke Newington joint social and PE publicity crawl with North London branch: (7pm) Rochester Castle, 145 High St; then Coach & Horses, Three Crowns, Daniel Defoe, Lion and Rose & Crown in that order, with possible visits to Londesborough, Shakespeare and Prince in the back streets. - **Mon 17 (8pm)** Pig's Ear mtg. Nightingale, Nightingale La, E11 - **Wed 19** Pig's Ear publicity crawl: meet (7pm) Pembury Tavern, E8. - **Fri 21 (8pm)** Beer festival social. Waltham Forest Social Club, Forest Rd, E17.  
*Website: www.pigsear.org.uk*

## ENFIELD & BARNET

*Brian Willis 020 8441 1892 (H), Branch mobile 07757 710008 at event.*

**October - Wed 1 (8.30)** Barnet GBG launch, Elephant Inn 283 Ballards La, N12. - **Tue 7** Enfield GBG launch, Beehive, 24 Little Bury St, Edmonton N9. - **Wed 15 (8.30)** GBG social. Lord Nelson, 14 West End La, Barnet EN5. - **Sat 18 (1pm)** GBG social and PotY 2008 award. Wonder, 1 Batley Rd, Enfield EN2. - **Thu 23 (8.30)** GBG social. Dog & Duck, 74 Hoppers Road, Winchmore Hill N21. - **Wed 29 (8.30)** GBG Social. Builders Arms, 3 Albert Rd, New Barnet EN4.  
**November - Thu 6 (8.30)** GBG social and CotY 2008 award. Winchmore Hill Cricket Club, The Paulin Ground, Fords Gro, N21. - **Sat 8**, Brentwood Brewery visit: details from contact or web. - **Tue 11 (8.30)** GBG social and mts. Sebright Arms, 9 Alston Rd, Barnet EN5. - **Sat 15** Wetherspoons beer festival by bus: details from contact or web. - **Thu 20 (8.30)** GBG social. Old Wheatheaf, 3 Windmill Hill, Enfield. - **Thu 27 (8.30)** GBG social and London Drinker pick up. Old White Lion, 121 Great North Rd, N2.  
*Website: www.camra-enfield-and-barnet.org.uk*

## KINGSTON & LEATHERHEAD

*Clive Taylor 020-8949.2099 (H) 020-8540.1901 (W), ctaylor2007@freeuk.com*

**October - Tue 7** Evening visit to Godalming. Travel by 6.40 train from Surbiton, changing at Woking on to 6.58 to Godalming, arr. 7.14. Start Richmond Arms, then other pubs along High St to finish in the Star. Return on 10.29 train. - **Thu 9 (8pm)** Wallington beer festival social. See page 19. - **Thu 14 (8.15)** Mtg. Queens Head, Richmond Rd, Kingston. - **Sat 18 (12.30)** Day visit to Pilgrim Brewery, Reigate. Travel by train or bus. Train Clapham Jct 11.38, change at Redhill. Names please. - **Thu 23 (8pm)** Twickenham beer festival social. See page 20. - **Tue 28 (8pm)** PotY presentation. Woodies, Thetford Rd, New Malden.  
**November - Mon 3 (8.15)** Mtg. Surbiton Club, St. James Rd, Surbiton. - **Wed 12 (7pm for 8pm)** Curry evening in Kingston: meet Kings Tun (Wetherspoons) then to Monty's. - **Fri 21** Out of branch visit to South Wimbledon: (8pm) Sultan, De Burgh Rd off Haydens Rd; then Trafalgar (London PotY) High Path.  
*Website: www.camrasurrey.org.uk*

## NORTH LONDON

Social contacts: Stephen Taylor, [stephen.taylor2@selexgalileo.com](mailto:stephen.taylor2@selexgalileo.com), 07531 006296; John Adams, [J.Adams@ucl.ac.uk](mailto:J.Adams@ucl.ac.uk), 07970 150707. Branch contact: John Cryne, [john.cryne2@googlemail.com](mailto:john.cryne2@googlemail.com), 07802-174861.

**October - Tue 7** NW3 new GBG entry social: (8pm) Old White Bear, Well Rd; then Duke of Hamilton, 23-25 New End. - **Tue 14 (8pm)** London Drinker beer festival planning meeting. Wenlock



Arms, 26 Wenlock Rd, N1. - **Tue 21** NW1 pre-Wenlock beer festival informal social: (8pm) Queens Head & Artichoke, 30-32 Albany St; then Breel Louise, 69 Coburg St. - **Tue 28** (8pm) Pub of the Season (autumn) presentation. North Nineteen, 194-196 Sussex Way, N19.

**November - Tue 4** (8pm) Mtg Three Compasses, 62 Hornsey High St, N8. - **Tue 11** Joint Pig's Ear publicity crawl with ELAC branch: (7pm) Rochester Castle, 143-145 Stoke Newington High Street, N16 (for Wetherspoon beer festival) then other N16 pubs. - **Tue 18** Pig's Ear Hoxton publicity crawl: (7pm) Masque Haunt, 168-172 Old St, EC1; then other EC1 and N1 pubs ending at Wenlock Arms. - **Tue 25** (8pm) London Drinker beer festival planning meeting. Wenlock Arms, 26 Wenlock Rd, N1.

Website: [www.camranorthlondon.org.uk](http://www.camranorthlondon.org.uk)

## RICHMOND & HOUNSLOW

Brian Kirtan 020-8384 7284(H), [briankirtan@blueyonder.co.uk](mailto:briankirtan@blueyonder.co.uk)  
**October - Wed 15** (8.30) Mtg. Express, 56 Kew Bridge Rd, Brentford.

**November - Mon 3** (8pm) Beer festival debrief, Prince of Wales, 136 Hampton Rd, Twickenham. - **Wed 12** (8.30) Mtg. Swan, 22 High St, Hampton Wick. - **Thu 20** St Margarets crawl: (8pm) Ailsa Tavern, 263 St Margarets Rd; (8.45) Turks Head, 28 Winchester Rd; (9.30) St Margarets Tavern, 107 St Margarets Rd; (10.15) Crown, 174 Richmond Rd.

Website: [www.rhcamra.org.uk](http://www.rhcamra.org.uk)

## SOUTH EAST LONDON

Neil Pettigrew 07751 898310 (M) *evening or weekends only*, [branch.contact@selscamra.org.uk](mailto:branch.contact@selscamra.org.uk)

**October - Wed 1** (8pm) Cttee mtg and social. Florence, 133 Dulwich Rd, SE24. - **Wed 8** Social: (7.30) Edmund Halley, 25-27 Leigate, SE12; (8.30) Dacre Arms, 11 Kingswood Pl, SE13. - **Tue 14** SE1 Bermondsey social crawl: (7.30) Hide, 39-45 Bermondsey St; (8.15) Woolpack, 98 Bermondsey St; (9pm) Garrison, 99-101 Bermondsey St; (9.45) Leather Exchange, 15 Leathermarket St. - **Mon 20** (8pm) Social. British Oak, 109 Old Dover Rd, SE3. - **Tue 28** SE11 Kennington social crawl: (7.30) Dog House, 293 Kennington Rd; (8pm) Duchy Arms, 63 Sarcroft St; (8.45) White Hart, 185 Kennington La; (9.30) Prince of Wales, 48 Cleaver Sq. **November - Mon 3** (8pm) Cttee mtg and social. Roebuck, 50 Great Dover St, SE1. - **Wed 12** SE3 Blackheath social crawl: (7.30) Hare & Billet, 1a Eliot Cottages; (8.15) Crown, 49 Tranquil Vale; (9pm) Princess of Wales, 1a Montpelier Row; (9.45) Railway, 16 Blackheath Village. - **Mon 17** Bromley social crawl: (7.30) Freelanders Tavern, 31 Freeland Rd; (8.15) Red Lion, 10 North Rd. - **Tue 25** (8pm) Beer festival mtg and social. Old Nuns Head, 15 Nunhead Green, Peckham SE15.

Website: [www.selscamra.org.uk](http://www.selscamra.org.uk)

## SOUTH WEST ESSEX

Alan Barker [suessex@essex-camra.org.uk](mailto:suessex@essex-camra.org.uk)

**October - Thu 2** (8.30) Social. Bell, High Rd, Horndon-on-the-Hill SS17. - **Fri 10-Sun 12**, Branch weekend. Shrewsbury, visiting Dow Bridge and Salopian Breweries, plus Bishops Castle by minibus (sorry, full up). - **Tue 14** (8.30) Social. Brave Nelson, 138 Woodman Rd, Warley CM14. - **Fri 24** (8pm) 2nd HEBFest Beer Festival Social. Memorial Hall, Forebury/Knight St, Sawbridgeworth CM21. - **Thu 30** (8.30) Social: JJ Moons, Unit 3, 46-62 High St, Hornchurch RM12.

**November - Tue 4** (8.30) Social. Moon & Stars, 99/103 South St, Romford RM1. - **Wed 12** (8.30), Social. Traitors Gate, 40-42 Broadway, Little Thurrock RM17. - **Tue 18** (8pm) 29th Rochford Beer Festival social. Freight House, Rochford, SS4. - **Thu 27** (8.30) Social. Phoenix, Broadway, Rainham RM13.

Website: [essex-camra.org.uk/suessex](http://essex-camra.org.uk/suessex)

## SOUTH WEST LONDON

Mark Bravery 020-8540 9183 (H), 020-7147 3826 (W), [markbravery@blueyonder.co.uk](mailto:markbravery@blueyonder.co.uk)

**October - Wed 8** (7.30) Open cttee mtg. Edward Rayne, 8-12 Coombe La, Raynes Park SW20. - **Thu 16** Cider month social:

meet (7.30) Wibbas Down Inn, 6-12 Gladstone Rd, Wimbledon SW19. - **Mon 20** Local guide research crawl: meet (6.45) Rose & Crown, The Polygon, Old Town, Clapham SW4. - **Wed 22** Oct (7.30) Branch award presentation. Princess of Wales, 98 Morden Rd, Merton SW19.

**November - Sat 8** (7pm) Battersea beer festival workers' social. Sultan, 78 Norman Rd, S Wimbledon SW19. - **Thu 11** Local guide research crawl: meet (6.45) Priory Arms, Lansdowne Way, S Lambeth SW8. - **Mon 17** (7.30) Open cttee mtg (GBG long listing, PotY shortlist), Priory Arms, Lansdowne Way SW8 (upstairs room).

Website: [www.sulcamra.org.uk](http://www.sulcamra.org.uk)

## WATFORD & DISTRICT

Andrew Vaughan 01923 230104 (H) 07854 988152 (M)

**October - Thu 2** (9pm) General knowledge quiz. Southern Cross, Langley Rd, Watford. - **Fri 17** Beer festival promotion in Rickmansworth and Croxley: meet (8pm) Druids, High St, Rickmansworth. - **Tue 28** (8pm) Mtg. Estcourt Arms, St. John's Rd, Watford. - **Fri 31** (8pm) Cider social. Land of Liberty, Peace & Plenty, Long La, Heronsgate, WD3.

**November - Thu 13-Sat 15** 14th Watford Beer Festival. West Herts Sports & Social Club, Park Avenue, Watford. See page 23. - **Fri 21** (8pm) Post-beer festival social. West Herts Sports & Social Club.

Website: [www.watfordcamra.org.uk](http://www.watfordcamra.org.uk)

## WEST LONDON

Kimberly Martin 07717 795284, [KimberlyMartin@yahoo.com](mailto:KimberlyMartin@yahoo.com)

**October - Thu 9** Earls Court crawl: (7.30) Atlas, 16 Seagrave Rd; (8.30) Blackburn, 209 Earls Court Rd; (9pm) Courtfield, 187 Earls Court Rd; (9.30) Kings Head, 17 Hogarth Pl. - **Wed 15** (7.30) Mtg. Morpeth Arms, 58 Millbank. - **Tue 21** Pimlico crawl. (7.30) Gallery, 1 Lupus St; (8.30) Pride of Pimlico, 85 Tachbrook St; (9.30) Grosvenor, 79 Grosvenor Rd. - **Wed 23-Thu 25** Three-day working social. Twickenham Beer Festival, York House, 44 York St, Twickenham. See page 20. - **Wed 29** (7.30) PotY and London Cider Awards: joint presentation. Harp, 47 Chandos Pl. **November - Mon 3** (7.30) Shut the Box social. Duke of Sussex, Bedford Park, Acton Green. - **Tue 11** (7.30) Beer quality social. Leinster Arms, 17 Leinster Terrace, W2. - **Thu 20** (7.30) Mtg. Mitre. (small function room), 24 Craven Terr, W2. - **Tue 25** (7.30) Quiz night. Crown & Sceptre, 34 Holland Rd. - **Sat 29** (1pm) Old Ale Festival, White Horse, Parsons Green.

Website: [www.westlondon-camra.org.uk](http://www.westlondon-camra.org.uk)

## WEST MIDDLESEX

Acting Social Secretary Roy Tunstall 07960 031399, [socials@westmiddxcamra.org.uk](mailto:socials@westmiddxcamra.org.uk)

Branch contact John Bush 07739 105336, [info@westmiddxcamra.org.uk](mailto:info@westmiddxcamra.org.uk)

**October - Thu 2** Central Line crawl: (7.30) Castle, N Acton; (8.30) Fox & Goose, Hanger La; (9.30) Railway & Black Horse, Greenford. - **Mon 6** (7.30) Opening night. Sir Michael Balcon, 46-47 The Mall, Ealing (TBC). - **Thu 9** (8pm) CoTY presentation. Questors Beer Festival, Grapevine Bar, Questors Theatre, Mattock La, Ealing. - **Tue 14** (8pm) PotY presentation. Red Lion, 13 St Marys Rd, Ealing. - **Fri 17** (8pm) Beer festival social. Fox, Green La, Hanwell. - **Sat 18** (9am) EBF staff trip to Wickwar Brewery: contact John Bush for details. - **Thu 23** (7pm) Twickenham beer festival social.

**November - Sat 1** Wetherspoons beer festival crawl: (1pm) Moon on the Hill, Harrow. See website for more details. - **Wed 12** (8pm) Mtg. Botwell Inn, Coldharbour La, Hayes. - **Fri 14** (7pm) Watford beer festival social.

Website: [www.westmiddx-camra.org.uk](http://www.westmiddx-camra.org.uk)

Electronic copy deadline for the December/January 2009 edition: 12th November 2008. Please send entries to [geoff@coherent-tech.co.uk](mailto:geoff@coherent-tech.co.uk).

# The Fox



**CAMRA West Middlesex  
Pub of the Year 2005 and 2007**



A unique family run Inn, circa 1845. Tucked away in a peaceful spot within yards of the Grand Union Canal at the junction of the Brent River and Hanwell flight of locks. A welcome pit stop for ramblers, canal enthusiasts, real ale connoisseurs, cyclists, dog walkers and children alike in a well appointed Victorian bar and enclosed beer garden.

Award winning beers and freshly cooked, locally sourced food complemented by a hand selected wine list. Renowned Thurs Quiz Night and annual Easter and October Beer Festivals; regular summer BBQs with live music nights.

**Weekday lunch available** 12 - 3pm

**Evening menu available** Tues - Sat 6 - 9.30pm

**Saturday brunch** 11 - 4pm

**Sunday roasts** 12.30 - 3pm

**COME TO OUR OCTOBER  
BEER FESTIVAL  
17, 18 & 19 October  
24 DIFFERENT REAL ALES**

Green Lane, Old Hanwell, London W7

Tel: 020 8567 3912

Open 11am - 11pm Monday - Saturday,

12am - 10.30pm Sunday

Email: [thefox@oldehanwell.fsnet.co.uk](mailto:thefox@oldehanwell.fsnet.co.uk)

## Priory Arms

a genuine free house

The Cask Marque logo guarantees the quality of our beer. Our ever changing range includes...



83 Lansdowne Way  
Stockwell

(5 minutes from  
Stockwell Tube)  
SW8 2PB

Tel: 020 7622 1884



Food available:

Monday - Friday: 12.30 - 2.30pm  
6.30 - 9.30pm

Saturday: 1.00 - 9.30pm

Traditional Sunday Lunch: 1.00 - 6.00pm



Function Room

- Hop Back Summer Lightning, Harvey's Best and three guest ales always available.
- 1st floor Function Room - 60 capacity.
- An extensive range of continental bottled beers.
- 20 wines by the glass or bottle.
- Traditional Sunday lunch.
- Sunday night trivia quiz.

The aim of 'Capital Pubcheck' is to share information about the latest happenings on the London pub scene including new pub and bar openings, name changes, acquisitions, closures, notable changes to beer ranges etc.

Information is gathered from a variety of sources including London Drinker readers, individual CAMRA members and branch contacts, breweries, pub operators, landlords etc. If you would like to contribute to 'Pubcheck' please send your news to the address below.

The reinstatement of real ale in a smattering of pubs across London is more than offset by the record number of closures and conversions to other uses reported. These include high profile and popular viable pubs in central areas where pubcos can maximise development value. Two Good Beer Guide pubs are currently threatened in SE13 Lewisham and SW18 Wandsworth and the erstwhile internationally famous Orange brewpub in SW1 Belgravia is also due for imminent closure. The fate of pubs caught up by pubcos such as Laurel and Massive going into administration is recorded as new owners and names emerge.

Cross references to CAMRA's various pub guides covering Greater London are provided to enable easy updating. The numbers in brackets after each entry refer to the page numbers in the following guides: BM - Balham to Morden Pub Guide; BRP - Barnes to Raynes Park Pub Guide; CE - Camden & Euston Real Ale Guide; E - East London & City Beer Guide, 3rd edition; H - Hertfordshire Guide to Real Ale, 2000 edition; HB - Holborn & Bloomsbury Pub Guide; IS - N1 Islington Real Ale Guide; K - Guide to Kent Pubs, 10th edition; SK - Real Ale Guide to Kent Pubs, 8th edition; KT - Kingston Pub Guide; N - North London Beer Guide, 3rd edition; RHP - Richmond to Ham & Petersham Pub Guide; SE - South East London Pub Guide, 4th edition; 3SE - South East London Pub Guide, 3rd edition; SW - South West London Pub Guide, 2nd edition; W - West London Pub Guide, 2nd edition; WB - Wandsworth and Battersea Pub Guide; X - Essex Beer Guide, 9th edition.

If you would like to report changes to pubs or beers, please write to: Capital Pubcheck, 2 Sandtoft Road, London SE7 7LR or email: [capitalpubcheck@hotmail.com](mailto:capitalpubcheck@hotmail.com).

## NEW & REOPENED PUBS & PUBS CONVERTED TO REAL ALE

### CENTRAL

W1(May), CALLAGHANS, Glasshouse St. No real ale. Reopened. (W64, U195)

### NORTH

N2, CLISSOLD ARMS, 105 Fortis Green. Fuller: London Pride; Harvey: Best Bitter; Taylor; Landlord; Wells: Bombardier. Reopened in April. (N65, U137, U186, U193)

N7, HERBERT CHAPMAN, 274 Holloway Rd. Courage: Directors. Beer may vary. Reinstatement of real ale. Formerly STUDY, HOBGOBLIN and PRINCE OF WALES. (N89, U120, U188, U194)

N7, RED ROSE, 129 Seven Sisters Rd. No real ale, H unused. Independent bar in former club, now open to all. Formerly commercial premises.

N16, TURNPIKE HOUSE, 270 Stamford Hill. Young: Special. Now Enterprise, ex-Bass via Unique. (N131, U159)

N17, CORNER PIN, 732 High Rd. No real ale. Reopened. (N134, U191)

N22, WESTBURY, 57 Westbury Ave. Courage: Best Bitter. Reinstatement of real ale. (N157, U199)

ENFIELD (EN1), HOP POLES, 320 Baker St. Guest beer (e.g. Holts Humdinger). Reopened. (N229, U176)

### NORTH WEST

NW6, CZECH BAR, 74 West End La. No real ale. Independent bar with draught Czech lagers in former Czech club premises.

NW6, GALLERY, 190 Broadhurst Gdns. No real ale. Independent bar in former shop premises, opened by March 2008

NW6, LATELY, 175 West End La. No real ale. Independent bar in former shop premises

NW9, ROISIN DUBH, 1 Fryent Way. No real ale. Independent bar in former café premises, opened by October 2004.

NW9, TONKY GORILLA, 539-541 Kingsbury Rd. No

real ale. Independent bar in former commercial premises. NW10, BANKERS DRAUGHT, 83 Chamberlayne Rd. Renamed CHAMBERLAYNE. Flowers: IPA; Taylor: Landlord. (N221)

NW10, BAR LULA, 50 High Rd, Willesden. No real ale. Independent bar in former shop premises.

HAREFIELD (UB9), ST JAMES' AT THE HORSE & GROOM, Moorhall Rd. Fuller: London Pride; Wells: Bombardier. S&N PE briefly leased to McLean Inns, lease currently available. Reinstatement of real ale. (W147, U197)

HARROW (HA2), HORSESHOE BAR, 326 Eastcote La. Courage: Best Bitter. (W154)

HARROW (HA2), O'FLAHERTY'S, 25 Broadwalk, Pinner Rd. Greene King: IPA. (W154)

RUISLIP (HA4), BELL, 293 West End Rd. Courage: Best Bitter; Wells: Bombardier. Reinstatement of real ale. Note full address. Rumoured that licensee may have acquired pub from Spirit. (W182)

RUISLIP (HA4), SWAN, 10 High St. Reopened and renamed CAFÉ ROUGE. Acquired from Spirit by Café Rouge chain in face of opposition from locals. No real ale but fizz beer available. (W183, U195, U197)

RUISLIP (HA4), WHITE BEAR, Ickenham Rd. Hop Back: Summer Lightning; Wadworth: 6X. Reinstatement of real ale. (W184)

WEALDSTONE (HA3), FORDES FREEHOUSE, 108 High St. No real ale. Independent bar in former shop premises.

WEALDSTONE (HA3), PAPA J'S, Greene King: IPA. Reinstatement of real ale. Formerly ROYAL OAK. (W217, U199)

WEALDSTONE (HA3), PLOUGH, 383 Kenton Rd, Kenton. Erroneously reported in W guide as converted to a restaurant, it is a part independent bar and part Chinese and Indian restaurant named BLUE GINGER. No real ale. Reinstatement on pub database. (W237)

WEMBLEY (HA ), FLANNERY'S, 610/612 High Rd. No real ale. Independent bar in former shop premises.

WEMBLEY (HA9), GREYHOUND, 324 Harrow Rd. Greene King: IPA. S&N PE pub leased to Massive until it



# Capital Pubcheck - update 202

went into administration earlier this year, now operated by Glass House TMA Ltd. (W219)

## SOUTH EAST

**SE10, AMERICAN BAR & GRILL**, Unit 12, Entertainment Ave, The O2, Peninsula Sq. No real ale. Independent bar and restaurant opened by April 2008 in former cocktail bar outlet.

**SE10, CAFÉ ROUGE**, Hotel Ibis, Greenwich, 30 Stockwell St. No real ale. Branch of café bar chain with fizz beer available

**SE10, INC BRASSERIE**, Unit 21, Entertainment Ave, The O2, Peninsula Sq. No real ale. Bar and restaurant operated by Greenwich based Inc pub group.

**SE10, JIMMY MONACO'S**, Unit 22, Entertainment Ave, The O2, Peninsula Sq. No real ale. Independent bar and burger restaurant opened by August 2008.

**SE10, RAAN**, Unit 11, Entertainment Ave, The O2, Peninsula Sq. No real ale. Bar operated by Inc Group opened by April 2008.

**SE10, RADIZIO RICO**, Unit 15, Entertainment Ave, The O2, Peninsula Sq. No real ale. Independent bar and Brazilian restaurant opened by April 2008.

**SE10, TAPA TAPA**, Unit 12, Entertainment Ave, The O2, Peninsula Sq. No real ale. Independent bar and Spanish restaurant opened by April 2008

**SE10, WATER MARGIN**, Unit 23, Entertainment Ave, The O2, Peninsula Sq. No real ale. Independent bar and oriental buffet opened by August 2008.

**SE13, FOX & FIRKIN**, 316 Lewisham High St. Adnams: Bitter; Wells: Bombardier. Real ale reinstated at what was

once David Bruce's second brewpub. (SE118, U189)

**SE13, MARLOWES BAR**, 139/141 Lewisham High St. Renamed **MARKET TAVERN**. Banks: Bitter (not always available). Formerly **BROADWAY**, originally **QUAGGY DUCK**. (U110, U160, U168, U178, U181, U194, U196)

**SE15, PAGE 2**, 57 Nunhead La. Renamed **DUKE**. Young: Bitter. Formerly **EDINBURGH CASTLE**. (SE135, U171)

**SE22, VALE (THE)**, 31 Grove Vale. Nelson: Tragalgar Bitter, Friggin' in the Rigg'in', Powder Monkey. Beers may vary. A welcome real ale newcomer. Formerly **NEW HAMLET INN**. (SE200, U102, U152, U179)

**SE23, HOB (THE)**, 7 Devonshire Rd. Harvey: Best Bitter; Marston: Pedigree; St Austell: Tribute. Now Pubs 'n' Bars, ex-Wychwood via Balaclava Pub Co. Formerly **HOBS**, **HOBGOBLIN** and originally **PIE & KILDERKIN**. (SE207, U102, U116, U166, U171, U196)

**SE26, FOX & HOUNDS**, 150 Kirkdale. No real ale. Reopened. (SE222, U149, U197)

**CROYDON, VINTAGE**, 34 Surrey St. No real ale. Independent bar in former restaurant premises.

**ORPINGTON, BUFF**, Pinewood Dr. Greene King: Abbot. Reinstatement of real ale with Cask Marque accreditation. (3SE265, 8K130, U162, U163)

## SOUTH WEST

**SW1(B), TURKS HEAD**, 10 Motcomb St. Reopened and renamed **PANTECHNICON ROOMS** in May. Greene King: IPA. Now food dominated, run by same operator as Thomas Cubitt, Elizabeth St, SW1. (SW40, U201)

**SW4, O'NEILS**, 196 Clapham High St. Fuller: London Pride; Young: Bitter. Formerly **BAR SW4** and **GOOSE &**



## HOLLOWAY'S BEST PUB

Simply the best beer, food and music the area has to offer all under one roof at North Nineteen. Unusual Ales. Superb Wines and top quality Spirits on offer all the time with a wide range of Lagers. All our food is made from scratch on the premises - nothing frozen at all. So come and relax over a freshly prepared meal and well kept pint.



**NORTH NINETEEN, 194 - 196 SUSSEX WAY, LONDON N19 4HZ**  
**tel: 020 7281 2786 | web: [www.northnineteen.co.uk](http://www.northnineteen.co.uk)**

# It takes all sorts to campaign for real ale

## Join CAMRA today...

Complete the Direct Debit form below and you will receive three months membership free and a fantastic discount on your membership subscription. Alternatively you can send a cheque payable to CAMRA Ltd with your completed form, visit [www.camra.org.uk](http://www.camra.org.uk) or call 01727 867201. All forms should be addressed to Membership Secretary, CAMRA, 230 Hatfield Road, St Albans, AL1 4LW.

Save money by paying by Direct Debit!



### Your Details

Title ..... Surname .....

Forename(s) .....

Date of Birth (dd/mm/yyyy) .....

Address .....

Postcode .....

Email address .....

Tel No (s) .....

### Partner's Details (if Joint Membership)

Title ..... Surname .....

Forename(s) .....

Date of Birth (dd/mm/yyyy) .....

Please state which CAMRA newsletter you found this form in? .....

	Direct Debit	Non DD
Single Membership (UK & EU)	£20 <input type="checkbox"/>	£22 <input type="checkbox"/>
Joint Membership (Partner at the same address)	£25 <input type="checkbox"/>	£27 <input type="checkbox"/>

For Young Member and concessionary rates please visit [www.camra.org.uk](http://www.camra.org.uk) or call 01727 867201.

I wish to join the Campaign for Real Ale, and agree to abide by the Memorandum and Articles of Association.

I enclose a cheque for .....

Signed ..... Date .....

Applications will be processed within 21 days

Mem Form 0108



### Instruction to your Bank or Building Society to pay by Direct Debit

Please fill in the form and send to: Campaign for Real Ale Ltd, 230 Hatfield Road, St Albans, Herts AL1 4LW

Name and full postal address of your Bank or Building Society

To the Manager: Bank or Building Society

Address

Postcode

Name(s) of Account Holder (s)

Bank or Building Society Account Number

Branch Sort Code

Reference Number

Originator's Identification Number

9 2 6 1 2 9

#### FOR CAMRA OFFICIAL USE ONLY

This is not part of the instruction to your Bank or Building Society

Membership Number

Name

Postcode

#### Instructions to your Bank or Building Society

Please pay CAMRA Direct Debits from the account detailed on this instruction subject to the safeguards assured by the Direct Debit Guarantee. I understand that this instruction may remain with CAMRA and, if so will be passed electronically to my Bank/Building Society.

Signature(s)

Date



This Guarantee should be detached and retained by the payer.

### The Direct Debit Guarantee

- The Guarantee is offered by all Banks and Building Societies that take part in the Direct Debit Scheme. The efficiency and security of the Scheme is monitored and protected by your own Bank or Building Society.
- If the amounts to be paid or the payment dates change CAMRA will notify you 10 working days in advance of your account being debited or as otherwise agreed.
- If an error is made by CAMRA or your Bank or Building Society, you are guaranteed a full and immediate refund from your branch of the amount paid.
- You can cancel a Direct Debit at any time by writing to your Bank or Building Society. Please also send a copy of your letter to us.

detached and retained by the payer

Banks and Building Societies may not accept Direct Debit Instructions for some types of account.



The  
White Horse  
on  
Parsons Green

**Friday 28th  
to  
Sunday 30th  
November  
(5pm Start)**

# **26th Old Ale Festival**



## **A Celebration of Classic British Beer Styles**

- Over 40 Milds, Stouts, Porters, Old Ales, Christmas Ales, Winter Warmers, Barley Wines
- American Cask Ales
- Cask Ale from Meantime
- Christmas Beers from Belgium
- Live Music
- BBQ and Hog Roast
- Traditional Bar Games
- Morris Dancing

Contact: 020 7736 2115

For further details please view our website  
and sign up to receive news on future  
White Horse events

[www.whitehorsesw6.com](http://www.whitehorsesw6.com)



GRANITE. (SW60, U145, U184, U201)

SW7, POLO BAR, Rydges Kensington Plaza Hotel, 61 Gloucester Rd. No real ale. Chain hotel bar with entrances from street and foyer, formerly KENSINGTON BAR but previously unreported.

SW9, CAFÉ CAIRO, 88 Landor Rd. No real ale. Independent bar in former shop premises opened by February 2008.

SW9, OVAL LOUNGE, 24 Clapham Rd. No real ale.

Independent bar in former restaurant called Lavender

SW12, FIREFLY, 3 Station Parade, Balham High Rd. No real ale. Independent bar in former shop premises opened by March 2008.

SW15, IDLE HOUR, 22 Putney High St. Caledonian: Deuchars IPA. Reinstatement of real ale. Formerly BIERREX. (SW100, BRP20)

SW15, MOOMBA, 5 Lacy Rd. No real ale. Independent bar in former restaurant premises opened by May 2008.

SW15, NORMANBY, 231 Putney Bridge Rd. Adnams: Bitter. Formerly CEDAR TREE. (SW100, BRP16, U199)

SW15, PRINCE OF WALES, 138 Upper Richmond Rd. Black Sheep: Bitter; Greene King: Abbot. Reinstatement of real ale. (SW103, BRP22)

SW15, REDS, 146 Upper Richmond Rd. No real ale. Independent bar in former shop premises opened by May 2008.

SW19, BAR CHINA, 292 Haydons Rd. No real ale. Independent bar and Chinese restaurant in former commercial premises.

RICHMOND, ONE PARADISE ROAD, 1 Paradise Rd. No real ale. Independent bar now confirmed with keg beer; reinstate on pub database. (RHP26, U199)

## WEST

W2, CADS, Norfolk Towers Hotel, 34 Norfolk Pl. No real ale. Independent bar in basement of hotel with separate entrance from street in Norfolk Square.

W4, LA TASCA, 404/406 Chiswick High Rd. No real ale. Bar and tapas restaurant with keg beer available at the bar, part of chain.

W5, BARRACUDA, 8 The Mall. No real ale. Previously unreported independent bar opened in February 2008. Operates as nightclub with admission charge at weekends.

W5, CAFÉ ROUGE, 17 The Green. No real ale. Branch of café bar chain with fizz beer available. Formerly BAR ESCOBA and erroneously reported in W guide as converted to pure restaurant; reinstate on pub database. (W235)

W7, RED LION, 149 Boston Rd. No real ale. Reopened. (W108, U195)

W11, PELICAN, 45 All Saints Rd. Caledonian: Deuchars IPA; Fuller: London Pride. Reopened. (W120, U198)

W12, PRINCESS VICTORIA, 217 Uxbridge Rd. Fuller: London Pride; Greene King: Ruddles Best Bitter; Hop Back: Summer Lightning; Taylor: Landlord. (W123)

W13, HENNESSY'S BAR, 138 The Broadway. No real ale. Independent bar in former commercial premises, opened by July 2008.

BRENTFORD (TW8), PRINCESS ROYAL, 107 Ealing Rd. Fuller: London Pride. Real ale restored in this Fuller's pub since 2005. (W134)

HAYES (UB3), GREAT WESTERN HOTEL, Dawley Rd. Now simply GREAT WESTERN. Fuller: London Pride. Reinstatement of real ale. (W160)

HAYES (UB3), KINGS ARMS, 109 Coldharbour La. No real ale. Reopened. (W160, U196)

HILLINGDON (UB10), HEATH TAVERN, 4 Byron Parade, Uxbridge Rd. No real ale, H unused. Reopened. (W165)

HOUNSLOW (TW3), SOUTH WESTERN, 158 Whitton Rd. Reopened and renamed BLUE GINGER. No real ale. Now part independent bar and part Chinese and Indian restaurant. (W170, U199)

UXBRIDGE (UB8), WATERS EDGE, Canal Cottages, Packet Boat La, Cowley Peachey. Wells: Bombardier. Reinstatement of real ale. Formerly TURNING POINT. (W215, U195)

## PUBS CLOSED OR CEASED SELLING REAL ALE

### CENTRAL

EC1, SPORTSMAN, ex-Whitbread, now demolished and replaced by flats. (E24, U171)

WC2, HAND & RACQUET, Spirit, closed by May 2008. (W33)

W1 (May), RED LION, 1 Waverton St, Spirit, closed in August, future uncertain. Likely to be sold for non-pub use much to the consternation of loyal regulars. Licensee retiring from trade. Pub dates from 1749 but not listed. The sad loss of a genuine Mayfair local. (W61)

### EAST

E4, PRINCE OF WALES, M&B, ex-Six Continents, closed, future uncertain. (E96, U169)

E7, FOREST GATE HOTEL, Punch, ex-Taylor Walker, no real ale. (E107)

E7, LIVE & LET LIVE, Enterprise, ex-Bass via Unique, no real ale. (E108, U117, U125, U144)

E8, BAR 512. Renamed VILLAGE BAR, Free, closed for conversion to apartments. Formerly VILLAGE AT DALSTON. (E117, U67, U192)

E9, KENTE SPOT, Free, already reported as converted to 'Fiesta' wine bar, now converted to church use. Formerly ROUNDHOUSE and BRIDGE HOUSE TAVERN. (E119, U84, U108, U151, U161, U187)

E9, LEA TAVERN, Free, closed and boarded up. Pub was established before 1874. (E121, U79, U181)

E10, DIPLOMAT BAR, Free, closed following fire. Formerly BAR EUROPA and BAR 377. (U179, U199)

E14, RAILWAY TAVERN, Inn Business, H unused. (E147, U178)

E15, ROYAL OAK, Enterprise ex-Watney via Unique, closed having been 'peacefully re-entered by owners Enterprise Inns' according to a notice in the window. (E154, U153)

### NORTH

N1, DRAPERS ARMS, Greene King, closed. Was HUNGRY HORSE for a while. (N54, U117, U144)

N4, FALTERING FULLBACK. Renamed POLSKI BAR SPORTOWA. No real ale. Originally SIR WALTER SCOTT. (N77, U155, U198)

N7, MORAY ARMS, Enterprise, ex-Inntrepreneur via Unique, closed and interior completely removed. (N88)

N7, MOYNIHAN ARMS, Free, still closed and boarded up. (N88, U167)

N7, OLD KINGS HEAD, S&N PE, ex-Taylor Walker, closed and boarded up. (N89, U193)

# Capital Pubcheck - update 202

**N8, BAR APOGEE**, Free, now cocktails and bottles only, keg fonts unused. Formerly O'S BAR, BLUE BAR CAFE and originally BIRD IN HAND. Delete from pub database. (N93, U137, U144, U199)

**N15, GOLDEN STOOL**, ex-Bass, closed. Formerly MITRE. (N125, U140)

**N17, BRICKLAYERS ARMS**, Enterprise, ex-Whitbread, no real ale. Was CLUTTERBUCKS ALE HOUSE for a while. (N133, U138)

**N17, PARK (THE)**, Greene King, closed. Formerly PARK HOTEL. (N135, U165)

**N17, PRIDE OF THE LANE**, ex-Watney, closed by December 2006. Formerly MILFORD TAVERN. (N134, U165)

**N17, SWAN**, Punch, ex-Taylor Walker, closed January 2008. (N136)

**N19, SHAFTSURY**, ex-Taylor Walker, closed and boarded up by May 2008. (N145, U156, U167)

**N22, CHARLIE BROWNS**, ex-Bass, converted to members only 'Gentlemen Club' by May 2004 and now a night club called 'N22 Bar'. Formerly KINGS. (N155, U162)

**N22, O'RAFFERTYS**, Free, upstairs now converted to residential use with ground floor vacant. Formerly FISHMONGERS ARMS. (N155, U189)

**N22, PRINCE**, ex-Bass, H removed by October 2004. Formerly PRINCE OF WALES. (N156, U172)

**COCKFOSTERS (EN4)**, TRENT TAVERN, S&N, now demolished. (N247, U157)

**ENFIELD (EN1)**, LINCOLN ARMS, Greene King, H removed. Formerly HUNGRY HORSE and SALISBURYS. (N230, U109, U117, U161)

**ENFIELD EAST (EN3)**, BEER & BARREL, M&B, now confirmed demolished in July 2008. (N239, U160, U163, U191, U197)

## NORTH WEST

**NW2, CRICKLEWOOD HOTEL**, M&B, ex-Bass, closed and for rent. (N179, U151)

**NW3, ESTABLISHMENT**, Free, closed and boarded up in March 2008. Formerly ELBOW ROOM (U168, U197)

**NW3, ROOM SIXTY EIGHT**, Free, previously reported as converted to 'J'aime' French restaurant, now an Indian restaurant named 'Meghra'. Formerly HORSE & GROOM (Young). (N186, U157, U165, U171, U188, U193)

**NW3, KING OF BOHEMIA**, ex-Laurel, already reported as converted to charity shop, now a branch of Jessops, photographic shop. (N187, U110, U174)

**NW5, BULL & GATE**, Free, H unused and rumours that it may be closed and sold. (N197, U174)

**NW6, ALLIANCE**, Greene King, H unused. Was PICKLED NEWT (THE ALLIANCE) for a while. (N205, U117, U154)

**NW6, LONGROOM**, Free, closed by March 2008. (U188)

**NW8, S-JOY**, Enterprise, ex-S&N, closed by January 2008. Formerly DUKE by October 2004 and originally DUKE OF YORK. (N214, U136, U180)

**NW9, PRINCE OF WALES**, ex-Bass, now demolished with new building nearing completion on site. (N218, U178)

**HARROW (HA2)**, MATRIX, Free, closed by May and serious fire in August. (W154, U186)

**HARROW WEALD (HA3)**, LETCHFORD ARMS, Hatch End, S&N PE, H unused. (W217)

**NORTHWOOD (HA6)**, REINDEER, S&N PE, closed by

March 2008. (W178)

**STANMORE (HA7)**, ALFIES, Free, converted to sushi restaurant. (W191)

**WEMBLEY (HA0)**, FUSILIER, Sudbury, S&N PE, H unused. (W219)

**WEMBLEY (HA0)**, VILLAGE, Free, converted to an Indian restaurant. (W222)

## SOUTH EAST

**SE2, HARROW INN**, ex-Courage, closed by January 2008. (SE43, U149)

**SE3, SUN IN THE SANDS**, now Enterprise, ex-S&N, H unused. (SE49, U126)

**SE5, PAULET ARMS**, ex-Free (Labatts), closed and sold c. December 2006. (SE61, U102, U120)

**SE6, COPPERFIELD**, Spirit, ex-S&N (Barras branded), H unused. (SE67, U107)

**SE6, GEORGE**, ex-Whitbread, closed and boarded up by March 2008. (SE68)

**SE9, TUDOR BARN**, Free, reverted back to a restaurant/tea room. (U195, U199)

**SE10, GEORGE & DRAGON**, ex-Taylor Walker, closed by April 2008. (SE94, U105)

**SE10, OLD FRIENDS**, ex-Bass, closed and boarded up by April 2008. (SE99)

**SE10, RICKS**, ex-Bass, H unused. Originally BRITISH QUEEN and spent a while as GREENWICH VILLAGE. (SE95, U102)

**SE10, ST CHRISTOPHERS INN**. Renamed BELUSHIS, Interpub, H removed. As with the whole chain, Belushis is the bar name and St Christophers Inn is the name for the upstairs accommodation. Formerly PRINCE OF ORANGE. (SE100, U157, U196)

**SE10, SHIP & BILLET**, Enterprise, H removed. Formerly FROG & RADIATOR for a while. (SE94, U102, U107, U185, U187, U190)

**SE11, ALDERMAN**, ex-Bass, converted to residential use by June 2008. (SE105)

**SE11, CARPENTERS ARMS**. Renamed ELEPHANT & HIPPO, ex-Bass, closed. (SE106)

**SE11, CRICKETERS**, Kennington Oval, ex-Watney, still closed and boarded up and whole area fenced off around a 'dangerous structure' (SE106, U165)

**SE11, DUKES**. Renamed SOUTH CENTRAL, ex-Bass. Now operates as a night club/gay fetish bar called 'Eagle London'. Delete from pub database. Formerly DUKE OF CAMBRIDGE. (SE106, U102)

**SE11, DURHAM ARMS**, ex-Courage, now converted to residential use by May 2008. (SE106, U170)

**SE11, GEORGE**, ex-Watney, demolished by June 2008. (SE107)

**SE11, GEORGE & DRAGON**, ex-Phoenix, closed and boarded up by May 2008. (SE107)

**SE11, JOHN BULL**, ex-Courage, closed and building work underway. (SE107)

**SE11, JOLLY COCKNEY**, ex-Whitbread, H removed. Now a German theme pub, subtitled ZEITGEIST, selling exclusively German beers and food. Has held a German beer festival with a dozen or so barrels imported for the occasion. (SE107)

**SE11, LITTLE APPLE**, ex-Watney, H removed. (SE108)

**SE11, LORD CLYDE**, ex-Brent Walker, previously Truman, now demolished. (SE108, U102)

# The Oakdale Arms



## 8 Real Ale Pumps

*Regular Guest Ales, Beer Garden & Forecourt, Games Room,  
Quiz Night, Lively Helpful Staff, Great Atmosphere & Eclectic Jukebox*  
283 Hermitage Road, Seven Sisters, London, N4 - 1NP  
12pm - 11.00pm Mon - Sat / 10.30pm Sun,  
[www.individualpubs.co.uk/oakdale](http://www.individualpubs.co.uk/oakdale)  
Tel.No: (020) - 8800 - 2013



A warm welcome in the heart of  
Harefield village.

the harefield

**41 High Street, Harefield, Middlesex UB9 6BY**

Tel: 01895 820003 email: [theharefield@googlemail.com](mailto:theharefield@googlemail.com)

*Opening hours: 12-11:00pm Mon to Sat, 12-10:30pm Sunday*



**TRADITIONAL ROAST**  
served every Sunday  
12:00 onwards

**HOME COOKED FOOD**  
sourced locally, served daily  
12-3:00pm and 6-10pm

- Real Cask Ales with Timothy Taylor Landlord on permanently
- Rotating Guest Ales
- Freshly Ground Coffee & Tea
- Fine Wines & Champagne
- Disabled Facilities, Beer Garden & Free Parking

### HOW TO FIND US ON PUBLIC TRANSPORT:

Take the Piccadilly/Metropolitan line to Northwood/Uxbridge/Ruislip, then U9 or 331 to Harefield.

over 21s only

children welcome when dining

**BEER CLUB**  
£2.00 / pint on all  
Real Ales **NOW EVERY**  
Wednesday **ALL DAY!**



# Capital Pubcheck - update 202

**SE11, MANSION HOUSE**, still closed as problems with planning permission and renovation have delayed its intended reopening by Oakham Brewery. (SE108, U165, U190, U191)

**SE11, QUEENS HEAD**, ex-Courage, converted to a café serving only bottled beers. Some unused fizzy lager pumps remain but are unused. Now an enlightened greasy spoon; delete from pub database. (SE109, U172)

**SE11, RISING SUN**, ex-Watney, converted to residential use. (SE109)

**SE11, SURREY TAVERN**, ex-Watney, closed and included in redevelopment of that part of the Oval cricket ground, future uncertain. (SE110)

**SE11, TWO EAGLES**, ex-Watney, converted to residential use. (SE111)

**SE13, WHITE HORSE**, Enterprise, ex-S&N. Renamed ONE, H removed. (SE123, U107)

**SE13, YATES'S WINE LODGE**, Laurel, ex-Yates's, closed and boarded up. (U115, U154)

**SE16, EARL OF BEACONSFIELD**, ex-Courage, demolished. (SE146)

**SE16, GOLDEN LION**, Enterprise, ex-Mayfair Taverns, closed and boarded up by June 2008. Formerly TROPICS. (SE153, U135, U136)

**SE16, MANOR TAVERN**, ex-Bass, closed by July 2004 and remains so. (SE148)

**SE16, NEW CONCORD**, ex-Courage, closed by June 2004 and remains so. (SE149)

**SE16, QUEENS ARMS**, ex-Courage, H unused. Rumoured to have been sold following planning application for demolition and redevelopment. (SE151, U200)

**SE16, RISING SUN**, ex-Bass, closed July 2007 and demolished by June 2008. (SE151)

**SE16, ST GEORGES TAVERN**, ex-Courage, H unused. (SE152)

**SE16, THREE COMPASSES**, ex-Bass, H removed by June 2004. Since renamed PORTER. (SE152)

**SE18, HORSE & GROOM**, Enterprise, ex-Truman, closed and boarded up. (SE169, U102)

**CROYDON, CRO BAR**, Free, ex-SFI, closed and premises repossessed by landlords. Formerly LITTEN TREE. (U153, U186, U191)

**CROYDON, OAKFIELD**, Free, closed and boarded up. Formerly OAKFIELD TAVERN. (3SE245, U55, U98, U131, U197, U198)

---

## SOUTH WEST

**SW1(P), DENBIGH ARMS**, ex-Inntrepreneur, converted to flats by February 2002. (SW40, U136)

**SW1(W), REGENT ARMS**, Free, demolished by August 2003 and now replaced by flats. (SW49, U135)

**SW6, BAR LOCAL**, Free, converted to Starbucks coffee café. (U184)

**SW6, IMPERIAL ARMS**, 8 Lillie Road, Enterprise, ex-Inntrepreneur via Unique, H now removed. (SW67, U144, U152)

**SW6, MUNSTERS**, Free, converted to Thai restaurant. (U192)

**SW6, NOVELLOS**. Renamed ESTABLISHMENT, Punch, ex-Bass, H removed. Formerly ROSE & CROWN. (SW70, U131)

**SW6, PUMP HOUSE**, Punch, ex-Ind Coope, reverted to CLEM ATTLEE by October 2006, closed and boarded up and site surrounded by hoardings pending redevelopment.

(SW70)

**SW6, WELLINGTON**, Punch, ex-Bass, H removed. (SW71)

**SW6, WILTON ARMS**, S&N PE, ex-Inntrepreneur, H removed. (SW71)

**SW7, HARRINGTONS**, Free, demolished by October 2007. The end for the short lived replacement for the highly regarded SOUTHSIDE BAR. (U187)

**SW10, CAMEL**, ex-Inntrepreneur, renamed BARTOK, closed by July 2008. Formerly BLACK BULL and previously BULL BAR. (SW84, U136, U181)

**SW15, MALTESE CAT**, ex-Young, already reported demolished, now new housing built on site. (SW102, BRP39)

**SW17, PLOUGH**, Punch, now converted for retail use with residential above. (SW110, BM18, U191)

**SW17, ROUNDED OAK**, Marston, now converted to shop. Formerly GORDON BENNETT. (SW109, BM19, U192, U195, U198)

**SW17, SPIRIT**, Free, closed. (U174, BM20)

**SW19, MAGNOLIA**, Free, closed, future uncertain. Formerly SLUG & LETTUCE, originally BAR MED. (U148, BRP35, U195)

**SW19, SWNINETEEN**, Free, converted to Le Pain Quotidien, one of a chain of bakery/restaurant coffee/wine bars. Delete from pub database. Formerly PLAYERS LOUNGE, originally PITCHER & PIANO. (SW118, U177, U185, BRP35)

**KINGSTON (KT1), FINANCIER & FIRKIN**, ex-Six Continents, already reported as converted to 'Need the Dough' restaurant, now Zizzi's restaurant. (SW142, U151, U164)

**RICHMOND (TW9), SMOLLENSKYS METRO**, Smollenskys, converted to 'Cote' restaurant in June 2008. Delete from pub database. Formerly simply SMOLLENSKYS. (U187, RHP31, U198)

**RICHMOND (TW10), STEINS**, converted to restaurant retaining the same name but a new licence requires you to eat if you are drinking alcohol. Delete from pub database. (U187, RHP31)

---

## WEST

**W3, CAPTAIN COOK**, Enterprise, converted to 'Libertaire' nightclub open only at weekends. Delete from pub database. (W81)

**W3, GOLDSMITHS ARMS**, Spirit, John Barras branded, H unused following change of management despite Cask Marque award. (W81)

**W3, OSBORNE BAR**, Free, closed and believed to be being converted to hotel. (W85)

**W3, PUZZLE**. Renamed DIFFERENCE after refurbishment. Now independent, ex-Puzzle, still no real ale, H now removed, but closed in August, future uncertain. (W85, U185, U199)

**W5, FRONT ROOM**, Unit 20A, First Floor, Town Sq, Ealing Broadway Centre, Barracuda, closed and empty by February 2008. Note full address. (W93)

**W5, GRANVILLE**, M&B (Harvester), closed and due for demolition for flats with replacement 'pub' on the ground floor. (W93)

**W5, JOICES**. Renamed RING, S&N, H removed, now mostly Polish beer and food. (W96)

**W7, DUKE OF YORK**, S&N, H removed. (W107)

**W7, KINGS ARMS**, Enterprise, H unused. (W108)



# beer festival

20 Cask-  
Conditioned  
Ales

5 Traditional  
Ciders &  
Perries

Live  
Music  
sat & sun

BBQ  
fri & sat  
Hog Roast  
sun

Birds of  
Prey  
sat

Friday 10<sup>th</sup> -  
Sunday 12<sup>th</sup> October 2008



GRAVESEND & DARENTH VALLEY  
PUB OF THE YEAR 2008

**the bull** at horton kirby ■ keeping it real!  
lombard street, horton kirby, dartford da4 9df  
tel: 01322 862274 / web: [www.thebullpub.co.uk](http://www.thebullpub.co.uk) / e-mail: [info@thebullpub.co.uk](mailto:info@thebullpub.co.uk)

## "a beer drinker's mecca"

*Good Beer Guide 2005 - 2009*

**Special Offer for CAMRA Members**  
Second night's accommodation free! 1 Oct - 31 Mar  
Real Ale & Cider - 100 Belgian Beers - 214 Single Malts  
Pub of the Year 2007, 2008 - Top 10 Scottish Restaurants 2007 - Flights from Gatwick & Luton

the  
**ANDERSON**

Fortrose, by Inverness  
tel. 01381 620 236  
[www.theanderson.co.uk](http://www.theanderson.co.uk)



# Capital Pubcheck - update 202

W7, RED LION, Greene King, already reported closed, planning application now submitted to Ealing Council to build 12 flats on site. (W108, U195)  
 W8, TAVERN ON THE PARK, Thistle Hotels, closed and boarded up. (W114)  
 BRENTFORD (TW8), ALBANY ARMS, Enterprise, closed and lease for sale. (W130, U191)  
 GREENFORD (UB6), LIGHTNING, Vanguard, demolished June 2008. (W142)  
 HAYES (UB3), BLUE ANCHOR (MCAULEYS), now Admiral, ex-Enterprise, closed and boarded up. (W156)  
 HAYES (UB4), CROWN TAVERN. Renamed FLYNN'S BAR & GRILL and now FLANAGAN'S BAR & GRILL, Enterprise, no real ale, lease for sale. (W160)  
 HAYES (UB3), THOMAS HENRY K, Enterprise, H removed. (W161)  
 HAYES (UB4), WAGGON & HORSES, Admiral, demolished June 2008. (W161)  
 HILLINGDON (UB10), OAK TREE, Fuller, closed. (W166)  
 HOUNSLOW (TW3), ROYAL ALBION (JALANDAR JUNCTION), Free, closed. (W170, U186)  
 SOUTHALL (UB1), LADY MARGARET, S&N PE, now being converted to doctors' surgery and pharmacy. (W186, U195)  
 TEDDINGTON (TW11), RED LION, Enterprise, no real ale. (W197, U191)  
 TWICKENHAM (TW1), RANCH, Mint Group, closed. Formerly HOOK, LINE & SINKER. (W203, U195, U197)  
 UXBRIDGE (UB8), ABROOK ARMS, Punch, no real ale. (W206)

UXBRIDGE (UB8), FIG TREE, Greene King, H unused by June 2008. (W211, U190, U195, U197)  
 UXBRIDGE (UB8), HOG'S HEAD, Laurel. Renamed SLUG & LETTUCE by June 2008, H removed. (W210).  
 WEST DRAYTON (UB7), BENTLEYS, Viewswley, Enterprise, closed and lease for sale. (W222)  
 WEST DRAYTON (UB7), RAILWAY ARMS, Punch, closed. (W225)

## OTHER CHANGES TO PUBS & BEER RANGES

### CENTRAL

EC1, BETSY TROTWOOD, -beers listed except Shepherd Neame: Spitfire and Bishop's Finger; +Shepherd Neame: Kent's Best, Whitstable Bay, seasonal beer. (E12, U113)  
 EC4, BLACK FRIAR, -beers listed except Fuller: London Pride; +Taylor: Landlord; + 3 or 4 guest beers from M&B list. (E46, U151, U170)  
 EC4, SHAW'S BOOKSELLERS, -beers listed except Fuller: London Pride; +one other Fuller beer (currently Discovery). (U131)  
 WC2, CORNER STORE. Now Innventure, ex-Massive which went into receivership earlier this year. Formerly LATEST RUMOURS, BAR ZOLAS and originally RUMOURS. (W31)  
 WC2, MAPLE LEAF, -Courage: Best Bitter; + Fuller: London Pride; +Greene King: IPA. (W35)  
 WC2, PORTERHOUSE. The house real ale is TSB and the guest was recently Adnams Explorer. (W37)  
 W1(S), COACH & HORSES, 1 Gt Marlborough St, -beers listed; +Greene King: IPA, Abbot, of variable quality. (W64)  
 W1(S), CROWN, +changing guest beers (e.g. from Bateman, Caledonian, Elgoods and Taylors breweries). (W65)  
 W1(S), SUN & 13 CANTONS. Believed to have been owned by Fullers since 1998 although still badged as 'Free House'. Strangely still no real ale - beware cold keg London Pride. (W69)

### EAST

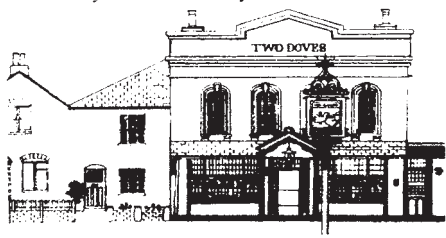
E1, GEORGE TAVERN. Tower Hamlets Council has rejected a plan to convert the function rooms at the rear of the pub to private flats on the grounds that this would jeopardise the pub's overall viability - other Councils please note! (E66)  
 E1, PEACOCK. Pub still trading but currently the subject of a revised planning application for its demolition and replacement by flats with a 'drinking establishment' use on ground floor. (E71)  
 E3, VIRTUE. Renamed MILESTONE, still no real ale. Formerly MATTER OF TIME. FLAUTIST & FIRKIN, HORN OF PLENTY and originally CORNUCOPIA. (E90, U96, U155, U195, U197)  
 E9, VICTORIA PARK, 360 Victoria Park Rd. Renamed BRITANNIA. Formerly FALCON & FIRKIN. (E120, U191)  
 E13, GREEN GATE. Now GREENGATE (one word) and has been for some time, still no real ale. (E136, U78, U86)  
 E17, FLOWERPOT, now run by same operator as Famous Pig & Whistle, E17. (E167, U80, U124, U125, U135, U168)

### NORTH

N4, BLARNEY STONE. Renamed HAPPY MAN by February 2008. Formerly BECHERS. (N73, U156)

## TWO DOVES

37 Oakley Road, Bromley Tel 020 8462 1627



*A warm welcome awaits you in the relaxed surroundings of this friendly pub*

**Young's selection of Real Ales**  
**Young's Award Winning Garden**

**CAMRA Good Beer Guide listed**  
**Friendly Clientele • Light Snacks**

Bus 320 from Bromley North and Bromley South railway stations stops outside

Hours: Lunchtime: Mon-Thu 12noon-3pm  
 Evenings: Mon 5-11pm, Tues-Thurs 5.30-11pm  
 Fri & Sat 12noon-11.30pm; Sun 12noon-11pm



**N7, HOLLOWAY CASTLE.** Renamed **CASTLE BAR**, now Punch, ex-Bass. (N88)

**N8, ICE.** Renamed **KISS THE SKY**, still no real ale. Formerly **STAR BAR**. (U189)

**N8, MOLLIE MALONES.** Renamed **GRANVAILE**. Formerly **FAMOUS PIG & WHISTLE**, originally **DICKS BAR**. (N93, U157, U174)

**N15, BLACK BOY.** Renamed **RIDGE BAR**, now a continental style café bar with all original features removed. (N123, U156, U189)

**N17, NORTHUMBERLAND ARMS.** Renamed **BILL NICHOLSON**, still no real ale. (N135, U165)

**ENFIELD (EN2), JOLLY FARMERS.** Address is 2 Enfield Rd, contrary to correction in U109. (N235, U109)

**ENFIELD (EN2), WHITEWEBBS HOUSE.** Now M&B Toby Carvery, ex-Whitbread (Brewers Fayre), still no real ale. (U131, U152)

## NORTH WEST

**NW1, CAMDEN TUP.** Now Innventure, ex-Massive. (U165, CE8)

**NW1, DORIC ARCH,** -guest beers; +Hop Back Summer Lightning; +Phoenix: Struggling Monkey; +Taylor: Landlord; +York: Terrier. Retains in addition Fuller: Chiswick, London Pride, ESB and Discovery. Beers vary less than previously. Formerly **HEAD OF STEAM**. (N168, U185, U192, CE10)

**NW3, BAR ROOM BAR.** Now simply **BAR ROOM**, still no real ale. Sold by Spirit to Orchid in 2006 and then chain sold off in 2007. (N184, U157)

**NW5, AUNTIE ANNIES PORTER HOUSE.** Renamed **ANNIES**, now plush and upmarket. Formerly **BOOK & CANDLE**. (N197, U154)

**NW5, MAN OF ARAN.** Reverted to **MAMELON TOWER**. Man of Aran remains on swinging sign. (N199, U156)

**NW9, HARTNETS.** Renamed **REIDS** by July 2008. Note correct spelling of former name. (U153)

**HARROW (HA1), GOODWILL TO ALL,** Tattersall Castle group, ex-Spirit, now sold on to Three Wishes group owner, Terry O'Sullivan, understood to be seeking planning permission for redevelopment for mixed use residential and commercial scheme. (W154)

**HARROW (HA2), WINNING POST.** Renamed **LAST POST**. (W155)

**NORTHWOOD (HA6), SYLVAN MOON.** Renamed **MISTY MOON**, now Heart Vale owned by Terry O'Sullivan, ex-Wetherspoon. (W178)

**RUISLIP (HA4), WATERS EDGE.** Now M&B (Pub & Carvery), ex-Whitbread (not Free), still no real ale. (W184)

**STANMORE (HA7), ABERCORN ARMS.** Now Free, ex-M&B, -beers listed except Fuller: London Pride; +Taylor: Landlord; +rotating guest. (W191)

**WEMBLEY (HA9), CONNAUGHT.** Renamed **SPEAKEASY**. (W219)

**WEMBLEY (HA0), CURRAGH.** Renamed **WAFABAR**. (W219)

**WEMBLEY (HA9), EDDIES.** Renamed **THIRSTY EDDIES**. (W219)

**WEMBLEY (HA0), QUIET MAN,** 9 Heather Park Parade, Heather Park Dr, Alperton. Renamed **LUSH BAR**. Note correct address. (W221)

## SOUTH EAST

**SE5, JACK BEARDS AT THE PLOUGH.** Renamed

**AMARYLLIS (BAR & RESTAURANT).** (SE61, U142)

**SE10, POLAR BEAR.** Renamed **AMARI**, still no real ale. Formerly **WHITE SWAN HOTEL** and originally **WHITE SWAN**. The name White Swan Hotel remains displayed referring to the hotel accommodation upstairs.. (SE103, U102, U120, U155, U164, U177, U184)

**SE11, BAR ROOM BAR.** Reverted to **TANKARD** by June 2008 after refurbishment, still no real ale, H removed. (SE111, U152, U195)

**SE11, BLACK DOG.** Renamed **LAVENDER** by May 2008, -beers listed; +Shepherd Neame: Spitfire; +Young: Bitter. (SE106)

**SE13, JOLLY FARMERS.** Good Beer Guide pub under threat of closure by Enterprise; latest news is that it will remain open with new lease. Formerly **JORDAN** and **HOGSHEAD** for a while. (SE120, U165, U186, U188)

**SE13, SHILLELAGHS BAR.** Renamed **TEMPLE BAR** by March 2008. (U125)

**SE22, MAGDALA.** Renamed **MAGNOLIA**, now Enterprise, ex-Truman via Unique. (SE200)

**SE23, MALT SHOVEL.** Renamed **QUESTION** in 2003, now a modern bar, still no real ale. (SE205, U114, U119)

**SE23, PRINCE OF WALES,** -beers listed; +Draught Bass. Now Punch, ex-Bass. (SE207)

**SE26, WINDMILL,** -beers listed; +Courage: Best Bitter; +Fuller: London Pride; +Wells: Bombardier. Now Three Wishes group, ex-London & Edinburgh and for sale. (U158, U175)

**BEXLEYHEATH, RAT & PARROT.** Renamed **IVORY LOUNGE**, still no real ale. (U138, K34)

**CRAYFORD, ROYAL CHARLOTTE.** Renamed **CHARLOTTE**. Retains real ale. (3SE232, U60, K52)

**CROYDON, DUKES HEAD.** Renamed **BODEGA**. Was **FIDDLER & FIRKIN** for a while. (3SE241, U50, U85, U160, U168)

**CROYDON, GREEN DRAGON,** -beers listed; +Dark Star: Hophead; +3 guest beers; +2 Hogs Back beers on gravity dispense. Now run by Town & City Pub Co, ex-Laurel. Formerly **HOG'S HEAD**, originally **HOGSHEAD**. (U136, U189, U191)

**SIDCUP, WOODMAN,** Blackfen. Renamed **GEORGE STAPLES**. (3SE274, U107, K36, U196)

## SOUTH WEST

**SW1(B), ORANGE BREWERY,** Spirit, ex-S&N, Grade II listed pub due to close in late September with expectations of redevelopment. A sad end for a once famous brewpub. (SW38, U162, U167)

**SW2, BABUSHKA.** Renamed **MANGO LANDING** by July 2004 but not previously reported. Formerly **HOPE**. (SW53, U144)

**SW4, DUKE OF YORK,** Free House now owned by Pubs 'n' Bars, H now removed. (SW60, U184)

**SW4, EXHIBIT B.** Renamed **GRAFTON HOUSE**, still no real ale. (U179)

**SW6, JIM THOMPSONS (ORIENTAL BAR, RESTAURANT & BAZAAR).** Reverted to **HAND & FLOWER**. (SW68, U197)

**SW6, NORMAN ARMS.** Renamed **JACK BEARDS AT THE NORMAN ARMS** by June 2008, still no real ale, H now removed. Now leased from Enterprise, ex-Intrepeneur via Unique. (SW69)

**SW6, WANDSWORTH BRIDGE TAVERN.** Renamed **HURLINGHAM**. Retains real ale. Was **GOOSE** and

# Capital Pubcheck - update 202

previously PADDYS GOOSE for a while. (SW70, U148, U184)

SW7, FINNEGANS WAKE. Renamed GLOUCESTER since at least July 2005, Spirit, ex-S&N. Originally GLOUCESTER ARMS. (SW72)

SW7, TAVERN. Full title of hotel is now Holiday Inn London Kensington Forum, -beers listed except Fuller: London Pride. (SW73)

SW9, GOOSE. Renamed IVANS RETREAT. Originally FLOWERMILL & FIRKIN. (U138, U151, U152, U157)

SW12, BALHAM KITCHEN & BAR. Renamed HARRISONS by March 2008, still no real ale. (U173, BM4)

SW18, WHEATSHEAF. This 'fantastic unspoilt pub', as described in the new 2009 Good Beer Guide, is due to close at the end of September for conversion to 'apartments for Young's staff'. Loyal customers may follow the licensees to the Crane, round the corner, much refurbished since the July 2007 flood damage, but the loss of yet another community pub apparently without any attempt to market it for continuing pub use sets a poor example. (SW90, WB39)

KINGSTON, NORBITON & DRAGON, now Orchid, ex-Free, -beers listed; +Fuller: London Pride; +guest beer (e.g. Greene King: Old Speckled Hen). (SW143, KT24)

RICHMOND, RACING PAGE. Renamed DUKE, -beers listed except Fuller: London Pride; +Sharp: Doom Bar. (SW156, RHP27)

## WEST

W3, HEMISPHERE. Renamed TUNE INN. (W84)

W4, DUKE. Reverted to DUKE OF SUSSEX by February 2008, -beers listed; +Shepherd Neame: Spitfire; +Young: Special; +guest (e.g. Moorhouse). (W88)

W5, SLUG & LETTUCE. Lease purchased by Wetherspoon from Laurel, now in administration.

Temporarily closed for refit and due to reopen as SIR MICHAEL BALCON in early October. (W96, U197)

W5, HA! HA! (BAR & CANTEEN), Laurel, ex-Yates's and now sold to Parkbox, who also own a local nightclub.

Renamed FLAVA LOUNGE BAR & GRILL, still no real ale. (W96)

W6, PUZZLE. Renamed SOUTHERN BELLE by new owners Capital Pub Co. (W104, U198)

W11, CRESCENT HOUSE. Renamed TAVISTOCK ARMS. Formerly MOTHER BLACK CAP, BABUSHKA, FROG & FIRKIN and originally TAVISTOCK HOTEL (W118, U198)

W11, MOOK. Renamed GATE. (W120)

W13, BROADWALK HOTEL. Renamed 142 BAR & RESTAURANT, still no real ale. Retains glazed tilework of former entrance similar in style to the Rochester Castle, N16. (W125)

W13, THREE WISHES. Renamed PAN TADEUSZ, still no real ale. Former 'Oirish' bar now turned Polish although only one Polish keg beer on draught. Named after Poland's national epic poem. (W126)

BRENTFORD (TW8), CAPTAIN MORGANS. Renamed O'RIORDANS and under new ownership. Formerly O'RIORDANS TAVERN. (W130, U192)

GREENFORD (UB6), RED LION is 'John Barras' branded. (W142, U195)

## The Pembury Tavern

90 Amhurst Road, London E8 1JH  
020 8986 8597

Real Ales, Cider and Perry,  
German and Belgian bottled beers,  
Single Malt Whisky, Fine Wines

New: Unpasteurised Lager from  
Taddington Brewery in Derbyshire

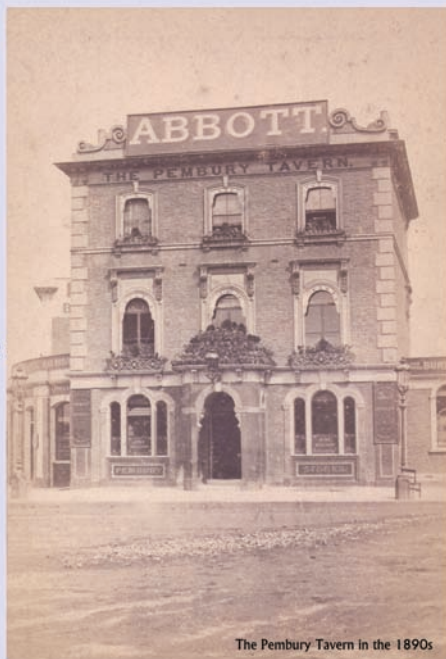
Open 12-11 every day

Food served 12-3 and 6-9  
and 12-9 on Sundays

Next Beer Festival  
November 12th-16th

<http://www.individualpubs.co.uk/pembury/>

SPBW London Pub of the Year 2007



The Pembury Tavern in the 1890s

TEDDINGTON (TW11), LION. Now leased by Traditional Pubs Ltd. Retains Twickenham beers. (W196, U191)  
 UXBRIDGE (UB8), SHOVEL, Cowley. Renamed MALT SHOVEL, retains real ale. (W214)  
 WEST DRAYTON, STATIONS. Renamed BLUES BAR by August 2007. (W226)

## CORRECTION TO UPDATE 189

### PUBS CLOSED ETC

E4, FREDDIES. Delete entry – pub remains closed and derelict and has not been demolished.

## CORRECTIONS TO UPDATE 201

### NEW & REOPENED PUBS ETC

E17, DUKES HEAD. Delete reference to same operators as Famous Pig & Whistle.  
 N1, MOSAIC. Should read: chain hotel foyer bar and restaurant.  
 SE1, TAPAS BRINDISA. Delete entry, already reported in U193.  
 SW1(W), SHOELESS JOE'S. Add: now reverted to Marstons after a period as a Free House.

## PUBS CLOSED ETC

EC1, GREN MAN & STILL. Should read: GREEN MAN & STILL.  
 EC4, PUZZLE EC4. Add: Originally LEARNED MONK.  
 EC4, TILTED WIG. Add: Formerly MCGOVERNS.  
 WC2, MARQUEE BAR & CLUB. Refs should read (W41, U191, U199).  
 E1, BAR BED. Formerly BLACK HORSE, 40 Leman St.  
 E2, SHAKESPEARE. Still open should read H unused (not closed).  
 NW9, WORLDS END. Refs should read (U109, U130, U140, U153).

## OTHER CHANGES ETC

EC1, PRODIGAL. Should read EC2. Address is 80 Aldermanbury.  
 N21, HARVESTER. Refs should read (N151, U174, U188).  
 CROYDON, CROWN. Add: M&B, ex-Six Continents.  
 SW1(P), PAGE. Add: Enterprise, ex-Grosvenor Inns.  
 SW19, DRIFT. Should read: Thai bar and restaurant etc.  
 RICHMOND (TW9), MOLLY MALONES. Should read: Reverted to original name HOPE (THE). (Was formerly HOPE OF RICHMOND from 1986).

## LOVE YOUR LOCAL

### Nominate your favourite London pub for a new community award

On 23 July a new community award scheme was launched by InBev UK, supported by the Evening Standard, aiming to celebrate the role that pubs play in their local communities.

For three months, pubgoers have the chance to nominate their favourite London pubs for the Stella Artois award of "London's Best Loved Local". At the launch of the scheme in his pub, the Duchess in Nine Elms Lane, Battersea SW8, landlord and actor Jason Flemyng said, "Love Your Local is a really positive campaign for pubs and communities which can demonstrate how pubs reach out to their customers and play an important role in promoting responsible drinking. I am excited to be part of this celebration of 'the local', and keeping it where it belongs, in the heart of a community". Stuart MacFarlane, President of InBev UK said, "This project will recognize and reward pubs that are the lynchpins of their local

communities, offer a welcoming atmosphere for their customers to relax in and socialize and of course support responsible drinking."

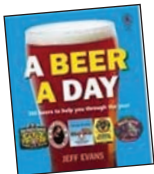
Londoners can support their local by logging on to [www.loveyourlocal.co.uk](http://www.loveyourlocal.co.uk) to nominate their favourite pub and give it a chance to win a total prize fund of £8,500. Following the nominations, one winning pub and three runners up will be awarded a 'Love Your Local' plaque and a 'Love Your Local Community Trust'. The Trust will be £5,000 for the winning pub and £1,000 for the three runners up, to invest for the good of their local community.

Formerly the Duchess of York and latterly serving no real ale, the Duchess reopened last year with handpumps reinstated and now serves Greene King IPA and Abbot.





## A Beer a Day



CAMRA Books' latest offering is *A Beer a Day* - 366 beers to help you through the year, written by leading beer writer, Jeff Evans and described as a beer lovers' almanac. Set in simple day-to-day diary style, it matches 366

beers from around the world with a major event, season, or other commemoration for each day of the year.

For example, from a London perspective, the page for 10th November marks the birth of William Hogarth and is matched with Fuller's 1845; the connection being that the Griffin Brewery is situated on the Hogarth Roundabout! The history

of both the beer and the artist is explored.

I don't think the beers on the whole are as generally available as the author suggests and I don't think many will go to the effort of drinking a particular beer on a particular day. However, he has done a fantastic job of matching 366 beers throughout the year and this is a fine book to dip in and out of time and time again. It is a worthy addition to any coffee table or the smallest room in the house for quiet research.

*A Beer a Day* is available directly from the CAMRA website at [www.camra.org.uk](http://www.camra.org.uk) priced £14.99 for CAMRA members and £16.99 for non-members.

Steve Williams

## London Heritage Pubs



Ever felt like drinking in 200 years of history when supping your pint? Then the latest publication of the CAMRA Heritage pubs group is for you. Entitled 'London Heritage Pubs - An Inside Story', the 208 page book is a catalogue of all the best,

genuine historical pubs the city has to offer. Sumptuous photographs and detailed text accompany each well researched entry. You won't find the 'basic boozer' beloved of CAMRA diehards here but rather the magnificent, often but not always palatial, polished architectural gems that still remain scattered across London and its suburbs. Most originated in Victorian times and we are indeed fortunate that so many are still with us.

The special features of each pub are painstakingly described with additional information on the listed status of each pub and even whether they sell real ale. (But no details of the ales on sale are given - this is a book primarily concerned with the physical surroundings, not the gastronomic or liquid offerings). I liked the clarity of the maps provided throughout the book, showing the general position of the pub but not cluttered with detail. I haven't checked their accuracy though! I'm not sure of the need for the 'Ten pubs not to miss' section at the beginning. Some readers will possibly only visit those, which is a shame. For visitors and tourists alike the 'History in the area' footnotes are particularly good, wetting one's appetite for further exploration of the area.

I have two quibbles however, both concerning presentation. There are too many blank white spaces on the outer edges of most pages, leaving the text positioned very near the binding. This means one has almost to prise the book open flat to read

it. Secondly, a lot of the photographs appear to have been taken in the early morning with bright sunshine falling on the many polished surfaces causing reflections which blur the detail. In comparison, an earlier classic, 'Victorian Pubs' by Mark Girouard (Studio Vista, 1975) uses black and white photography which gives much clearer definition. It would also be nice to see more pictures with the odd customer contentedly supping his pint just to show that these pubs are not museum pieces but well used and loved pubs.

The glossary is a welcome inclusion but I am surprised there wasn't rather more on the definition of real ale - it is a CAMRA publication after all! - perhaps drawing the distinction between handpumps and keg fonts - always a source of confusion to foreigners but interesting in themselves as genuine dispensing devices (such as the 'cash register' style handpumps in the George Inn at Southwark mentioned on page 139).

Finally, I particularly liked the 'Features'. These are a collection of short articles distributed throughout the book giving a potted history of the drinking scene in London over the past 300 years. Titles such as 'How old is old?', 'What we used to drink', 'From Brewery to PubCo', and 'Closed pubs' will undoubtedly prove useful to those whose primary interest is architectural but who lack the intimate knowledge of the social drinking scene that most CAMRA members take for granted. Perhaps it may persuade more people to visit these pubs and others in search of distinctive drinking places before they all disappear. I hope so.

Sue Hart

*London Heritage Pubs - An Inside Story* can be bought in all good book shops or ordered online at [www.camra.org.uk/shop](http://www.camra.org.uk/shop), priced £14.99 (£12.99 for CAMRA Members).

## Around London in 80 Beers



A copy of this new book was thrust into my hand at Earls Court this year in the hope that I might find something nice to say about it in *London Drinker*.

Anyone who has seen Chris (aka Podge) Pollard and Siobhan McGinn's previous book, *Around Bruges in 80 Beers*, will be familiar with the style. That book was so successful that it is now out of print with an update due later in the year.

This book is a collection of 80 beers available in London, matched with 80 different places to try them: from the quaint old ale houses that we all know and love to more quirky establishments such as a cinema, a bowling alley and even a bookshop.

The beer choices are just as eclectic: from the darkest porter to the lightest pilsner; from our favourites such as Fullers Chiswick to rarities such as Aecht Schlenkerla Rauchbier, traditionally hard to find in the capital.

As CAMRA members it is easy for us to be blinkered and take little notice of beers and bars that are not real ale. This volume includes many

beers and bars that are missed by the usual CAMRA guides which by definition cover real ale only. There are German, Belgian, Czech and American beers and bars - even Scottish, Irish and Cornish! There is plenty here to keep one refreshed and I look forward to taking a stroll around town to seek out some of the more unusual places and their delicious beers.

It really is an excellent book, thoroughly researched and well presented in glossy style, packed with photos.

Published by Cogan & Mater, it is available at [www.booksaboutbeer.com](http://www.booksaboutbeer.com) for £7.99 and is also likely to feature at London CAMRA beer festivals throughout the coming year.

*Steve Williams*

### Advertise in the next LONDON DRINKER.

Our advertising rates are as follows:

Whole page £300 (colour), £240 (mono);

Half page £180 (colour), £135 (mono)

Quarter page £95 (colour), £70 (mono).

Phone Peter Tonge now on 020 8300 7693

THE FINAL COPY DATE FOR ADVERTISING IN OUR NEXT ISSUE (DECEMBER/JANUARY) IS THE FIRST OF NOVEMBER

## LAUNCH OF CAMRA'S LocAle SCHEME IN LONDON

At the CAMRA Members' Weekend in April this year, Steve Westby of Nottingham Branch was heralded Volunteer of the Year for his success in launching a scheme encouraging pubs to support local beers and breweries. This autumn, the London Branches are working with Bob Steel as Regional Co-ordinator to extend the 'LocAle' scheme across the Greater London area.

The idea of the scheme is very simple: pubs are eligible to sign up if they permanently serve in good condition at least one cask beer from at least one local brewery. The condition of the beer will be monitored to 'Good Beer Guide standard' by the local CAMRA branch. For the London scheme, we define a local brewery as one that is within thirty miles of the pub's front door. The actual beer and brewery can change; it does not have to be the same beer all the time, which enables licensees to rotate their local beers if they so wish.

CAMRA has been a major supporter of the Sustainable Communities Act in its successful passage and this scheme will help to realise its aspirations. It should attract new customers to

pubs whilst helping to reduce the environmental impact of transport and promote the local economy. CAMRA will be providing point of sale material such as window stickers and pump crowns, and giving publicity to the scheme, which will include listing participating pubs in future issues of *London Drinker*.

Licensees interested in participating are invited to contact their local CAMRA branch - if their branch has not already contacted them.

The following breweries fall within thirty miles of some pubs in London:

**Bucks:** Chiltern; Old Luxters, Rebellon  
**Essex:** Brentwood; Felsted  
**Hants:** Crondall  
**Herts:** McMullen; Red Squirrel; Green Tye; Sawbridgeworth; Tring  
**Kent:** Goachers; Larkins; Millis; Nelson; Westerham  
**London:** Twickenham; Fullers; Battersea; Meantime  
**Surrey:** Ascot; Hogs Back; Pilgrim; Weyland; Surrey Hills; Farnham  
**Sussex:** Hepworths; King; Weltons.



## A Belgian brings porter to Twickenham

London may be a cosmopolitan world city – perhaps the most cosmopolitan of cities – but we tend to expect the beers and the drinkers to flow in, rather than the brewers. So when a Belgian brewer turned up in town to learn how to brew British-style real ales from an American, clearly something unusual was going on.

The Belgian was Urbain Coutteau of De Struise Brouwers, cited by the geeks at RateBeer.com as one of the world's top brewers, while the American was long-term local resident Tom Madeiros of Twickenham Fine Ales, who also has many beer awards under his belt, including a 2007 Champion Beer of Britain silver medal. The aim of the visit was for Urbain and Tom to collaborate on a beer and the result was Twickenham Struise Porter, which has been on draught at several pubs and beer festivals over the last few months. A small amount also got out in bottle-conditioned form, taking a silver medal at the SIBA South-East awards.

I asked Urbain how this international real ale project kicked off. "For the beginning, Tom and I were drunk," he joked. "We met a year ago at the

*it was worthless," said Urbain. "I thought he was being modest. After he left we kept drinking it and it kept getting better. After a week it was so wonderful, I said I have to go back and work with him."*

### Oh, Mr Porter!

The idea of doing a porter was Urbain's. Although porters and stouts are traditional English styles, they have of course been picked up by brewers worldwide. De Struise had already produced several examples, including its 13% ABV Black Albert stout, which made a brief but well received appearance this summer at the White Horse on Parsons Green. He explained: "We did this porter a while ago, but we didn't want to brew it in Belgium in the typical yeasty Belgian style, so the only way past that was to come to England and find a good brewer and brewery, and brew it in the English way. The English brewing process is much different from what we do, so in a way I'm in a training course. The equipment is quite different, as is the mashing process - in Belgium we do multiple mashes and a step infusion, with a mechanical arm. Then you have the different yeast strains, the 98% water - that's totally different. You could copy the water with reverse osmosis, but it's more original with original London water. I brought my way of thinking. At De Struise, we don't brew to style; we brew to aroma and style. We've made a porter that's not exactly a porter - it approaches a porter but it's not one."

There were obstructions on the way, however, mostly involving national borders. On his way to London, Urbain's adjuncts – 'the special twist that we add to the beer before bottling or casking' – were stopped at Security because they were unlabelled. So he had to pick them up on his way home and then courier them back to Twickenham.

### More alike than different

So what did the brewers involved, who clearly have a huge amount of respect for each other, learn about the similarities and differences between the two brewing heritages – and where does the project go next? "Generally we do things in a similar way, but not exactly the same. Belgian ales use gas-driven mechanical pumps, not hand-pumps, for example. So we were interested in the way it's done here," said Urbain. "You live in a country and you live that culture every day. When you come to another country, even if the culture is similar, it's new. It's like taking baths: sometimes you forget that a shower is nice too." Tom Madeiros added: "The advantage of the British single-infusion version is simplicity, but it's also the traditional way British beers have been brewed. We did it mostly in the British way. He wanted to do a step infusion but we can't, and we don't use sugars like they do. I don't particularly think the result was that



Tom and Urbain

*Karakterbier festival in Poperinge. We have some unorthodox ways of doing things at De Struise, so he wanted to come and visit. We also have a lot of people want to come to courses we run, and we wanted to do something more."* A plot was therefore hatched for Tom to travel to Belgium and give a class on how to handle and serve British real ale. (To keep up the international theme, the students on this particular course were Swedish.) Such a class naturally needed beer to demonstrate with, so along came two casks plus a few samples of Twickenham's finest for the group to try out, including a test brew called Four Grains. "When we first sampled it he said





Urbain, adding the malt

different. We would have got a little more out using step infusion though, because it gets more out of the grain."

Twickenham Struise Porter was definitely a success in cask. It was dark, vinous and malty, with spice, coffee and roasted notes. In bottle though its quality varied too much, and that's something Tom Madeiros suggested could be fixed more easily in Belgium than in London. "Urbain wants to brew again," he said. "He also wants to try taking Twickenham Naked Ladies to Belgium, but while Belgian Customs is no problem, British Customs is



Tom, monitoring the temperature

really tough on trades and transfers unless we use a registered exporter, which adds cost." Tom said Twickenham regularly swaps beers with other British brewers without problems, but HMRC makes it rather harder to do the same with breweries on the European mainland. Moving the next phase of the co-operation to Belgium would therefore avoid the UK Customs regime. "We could brew more of it over there, and also do more with it: put it in keg, cask or bottle," he added. "I'd also like to brew a Belgian-style beer, probably over there. I'd like to learn more about their style; that was my original idea in all this!"

So could we perhaps see a Struise Twickenham Tripel or Sour Ale? Here's hoping – though if the current UK regime maintains its anti-pub and anti-ale policies, we might have to go to Belgium to sample them.

Bryan Betts

## Pots, beermats and mirrors at the home of brewing

Whether you have an earnest interest in beer memorabilia or just want an excuse to visit Burton-on-Trent, then the CAMRA 2008 Breweriana Auction may be of interest. The event takes place at Burton Town Hall, King Edward Place, Burton-on-Trent DE14 2EB on Saturday 18 October. In addition, for those that want to make a weekend of it, Burton Bridge Brewery are laying on a brewery trip at 4.30 on the Friday afternoon.

Entry to the auction is by catalogue available from Bill Austin: 01923 211654 (answer phone) or [baustin@supanet.com](mailto:baustin@supanet.com).



Urbain and Steve digging out the mash tun

# TWENTYFIFTH PIG'S EAR



## BEER & CIDER FESTIVAL

Over 100 Real Ales and Ciders - Unique Festival Brews

Tuesday 2 - Saturday 6 December 2008

OCEAN, 270 Mare Street, Hackney, London E8 1HE (opposite Hackney Town Hall)

### Opening Hours:

Tues - Thurs: Noon - 10.30 pm  
Friday: Noon - 11.00 pm  
Saturday: Noon - 11.00 pm

### Prices:

Tues - Thurs and Sat £3.00  
(CAMRA Mems £2.00)  
Fri Noon - 2.00 pm FREE  
2.00pm - 11.00 pm £3.00  
(CAMRA Mems £2.00)

### Directions:

Rail: Hackney Central  
(North London Line),  
Hackney Downs/London Fields  
(From Liverpool Street)  
Buses: 30,38,48,55,56,106,  
236,242,253,254,276,277,  
394,D6 & W15

For further information: [www.pigsear.org.uk](http://www.pigsear.org.uk)

## A Taylor made celebration

Potter around London pubs and you are bound to eventually come across Landlord, Timothy Taylor's flagship beer. This Yorkshire brewery is currently celebrating 150 years of brewing or, to quote the managing director, Charles Dent, "*This is a celebration of survival*".

Taylor's was founded at a time when another Charles, this time Darwin, was causing a stir. It was a time when most mill towns had two to three breweries. Of those in Keighley, only Taylor's has survived. The current Knowle Spring Brewery was not the original site; the brewery moved here in 1863 because of the spring (hence the name). The brewery is proud of the fact that it still is in family hands but the passage has been through the female line. The current MD, Charles Dent, married into the family.

Charles puts Taylors continuing existence down to some luck, some female stubbornness, loyalty and a dedication to quality. The luck and loyalty was demonstrated in 1922, when the family decided not to sell despite advice to do so, and again in the 1950s when Gladys Taylor was confronted by death duties and sorted it by marrying a wealthy husband, Donald Horsfield.

Quality is reflected in the fact that the brewery has gathered over 70 awards since 1928. In 1952, they launched Landlord, originally called Competition Ale as there was a competition to name it. The steward from the Keighley Drill Hall

Club won it and received £500 for his creativity. Brewed with English Goldings and Styrian hops, CAMRA has acknowledged this beer as a classic, awarding Landlord the accolade of Champion Beer of Britain not once but three times. In August this year, it picked up a Bronze in the Best Bitter category.

Despite Taylor's reputation, the brewery is not massive, brewing 60,000 barrels a year and with a tied estate of only 29 pubs in Yorkshire and East Lancashire; so clearly you have to agree with Charles's comment, "*Size is not everything*". But they have continued to invest in the brewery and pubs, spending over £14 million over the last 10 years.

As part of their 150th celebration earlier this year, they brewed Celebration Ale, a 5% ABV malty beer balanced by the hops and orange overtones leaving a rich, fruity aftertaste: rounded and moreish. This was demonstrated by Putney's Bricklayer's Arms selling 9 gallons in 45 minutes. They are looking to brew it again this year around October/November and so keep an eye out for it.

We can be proud that Britain still has a number of excellent regional brewers that continue to produce excellent ales. All of their draft beer is, and has always been, real ale. So to finish with a quote from Charles, "*Good ale will be at the heart of good British pubs and British pubs will be around for many years to come*". I think we can all drink to that!

*Christine Cryne*





# Idle Moments

As promised, here are the solutions to the puzzles set in the August Idle Moments column.

## NUMBER PUZZLES:

1. 7 is the Sum of the Spots on the Opposite Sides of a Die
2. 23 is the Lowest Number you Cannot Score with a Single Dart
3. 2 Non-Contiguous States of the USA
4. 100 is Ten Tens
5. 4 Kings in a Deck of Cards
6. 28 Characters in the Arabic Alphabet
7. 3 Houses in Downing Street (Ten, Eleven and Twelve)
8. 95 Theses of Martin Luther (Nailed to the Church Door in Wittenberg)
9. 10 Pounds is the Weight of a Gallon of Water
10. 5 Coins on a Shove Ha'penny Board

## SBY4:

1. Oran 'Juice' Jones – The Rain
2. Howard Jones – Pearl in the Shell
3. Tammy Jones – U Know What's Up
4. Aled Jones – Walking in the Air
5. Tom Jones – Funny Familiar Forgotten Feelings
6. Rickie Lee Jones – Chuck E's in Love
7. Janie Jones – Witches' Brew
8. Paul Jones – High Time
9. Jimmy Jones – Good Timin'
10. Donnell Jones – Let Me Try Again

## GENERAL KNOWLEDGE:

1. The coronation of King Edward VII took place on 9th August 1902 after being delayed by six weeks because he had to have an emergency operation for appendicitis.
2. PLUTO which went into service on 12th August 1944 stands for Pipe Line Under The Ocean
3. On 13th August 1964, Peter Allen in Liverpool and John Walby in Manchester were the last people in Britain to be hanged.
4. On 14th August 1920 the seventh modern Olympic Games opened – in Antwerp.
5. Blaise Pascal, the inventor of the first digital calculator died on 19th August – the year was 1662. (I allowed a tolerance of plus/minus 50 years.)
6. Barry Gibb, the eldest of the Bee Gees was born on 1st September 1946 – in Douglas, Isle of Man.
7. The largest airliner ever (wholly) built in Britain, which had its maiden flight on 4th September 1949 was the Bristol Brabazon.
8. The BBC quiz programme Mastermind was first broadcast on 11th September in 1972.
9. Lesley Hornby, born on 19th September 1949 in Neasden, is better known as Twiggy.
10. Belize, which became an independent country on 21st September 1981, was previously known as British Honduras.

## LEYTON ORIENT SUPPORTERS CLUB

*joint winners of the*

**CAMRA NATIONAL CLUB OF GREAT BRITAIN 2008**

*Introducing our new*

## THURSDAY ALE CLUB

*Selected Thursdays starting on*

**October 2, 16 & 30**

**November 6 & 20**

**6.00 to 11.00pm**

*Six ales on pump, varied at each session*

## AUTUMN ALE FESTIVAL

**Thursday 16, Friday 17 October**

**5.00 to 11.00pm**

**and Saturday 18 October**

**6.00 to 10.00pm**

*Over thirty ales, plus ciders and perries during the festival*

Admission free at all sessions for CAMRA members and guests

Outdoor area available for smokers

Matchroom Stadium, Oliver Road, Leyton, London E10 5NF  
020 8988 8288

Five minutes walk from Leyton (Central Line) Tube

**The DOVE**  
*Street Inn, Ipswich.*

**76 St. Helens St, Ipswich Suffolk**

**Tel: 01473 211270**

**[www.dovestreetinn.co.uk](http://www.dovestreetinn.co.uk)**

**FOR UP TO THE  
MINUTE BEER INFO  
SEE OUR WEB SITE  
(ADDRESS AS ABOVE)**



## NEXT BEER FESTIVAL

**WED. NOVEMBER 26th to Sun 30th**

**50+ BEERS, CIDERS, MILDS**

**HOT & COLD FOOD ALL DAY EVERY DAY.**

**FRUIT & MULLED WINES,**

**LARGE WHISKY SELECTION,**

**WARM, COSY ATMOSPHERE !**

**SUFFOLK CAMRA PUB OF  
THE YEAR 2008**

I thought this time that instead of dipping into a dictionary of quotations, I would dip into that most estimable tome by Ambrose Bierce, *The Devil's Dictionary*; out came this definition:

*Faith (n): Belief without evidence in what is told one by one who speaks without knowledge, of things without parallel.*

Right. Let's have some number puzzles. I nearly offered a prize for one of them – but then I came to my senses:

1. 3 HS of the Z
2. 1926 MMB in LA
3. 4 NT are the P of B
4. 2 B on a W
5. 1952 VBL by RT
6. 350 FA is the ESB
7. 24 GS is the AE
8. 1648 B of GB
9. 2 is the N on the HS
10. 78 F is the L of a TC

Can you guess which one nearly became a competition? Now it's 5BY4 time. As I am in the middle of sorting out beers to purchase for the forthcoming Twickenham Beer & Cider Festival (23rd to 25th October – Don't miss it), the idea suddenly struck me – I would subtitle this month's collection "HEROES." No doubt you will recognise the names in the first list. All you have to do is link the founding fathers in the second list with the appropriate establishments.

- |                               |                                   |
|-------------------------------|-----------------------------------|
| 1. Nethergate                 | A. Peter Maxwell Stuart           |
| 2. Ringwood                   | B. Dave Roberts                   |
| 3. B&T<br>(or Banks & Taylor) | C. Nigel Fitzhugh                 |
| 4. Hop Back                   | D. Martin Ayres & Mike Desquesnes |
| 5. Crouch Vale                | E. Peter Austin                   |
| 6. West Berkshire             | F. John Gilbert                   |
| 7. Traquair House             | G. Mike Brown                     |
| 8. Pilgrim                    | H. Dave & Helen Maggs             |
| 9. Blackawton                 | I. Rob Walster & Colin Bocking    |
| 10. Ballards                  | J. Ian Hornsey                    |

And so we arrive at the intellectual (hah!) bit:

1. The youngest brother of King Edward IV, who also became king of England, was born in Fotheringhay Castle on 2nd October 1452. Who was he?
2. On 4th October 1983, Richard Noble in Thrust II set a new land speed record. Where did he do it and how fast was that record (within 10 mph).
3. Also on 4th October, but in 1957 (as we all know) Sputnik 1 was launched. How much did it weigh?



**realale.com**

Over 90 quality ales, ciders and perries, including a European selection, available online or call **0208 892 3710**

Visit our shop:  
**371 Richmond Rd**  
**Twickenham**  
**Middlesex TW1 2EF**

JOIN OUR  
**ALE CLUB**  
 FOR 3,6,9 or 12  
 MONTHS

Letters and articles for publication in *London Drinker* may now be submitted online at [www.londondrinker.org.uk](http://www.londondrinker.org.uk)

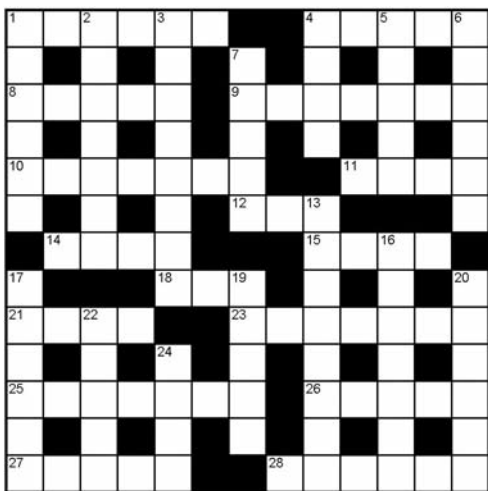
4. The Jazz Singer, the first successful "talkie" feature film opened in New York on 6th October - but in what year?
5. On 23rd October 1642 the first major battle of the English Civil War took place - where?
6. Singer Clementina Campbell was born on 28th October 1927 in Southall. By what name is she known professionally?
7. The first Woolworth's store in Britain opened on 9th November 1909 - in what city?
8. What was patented in America by heiress Mary Phelps Jacob on 13th November 1914.
9. The Dartford Tunnel was opened on 18th November in what year? (Clue - it preceded the M25).
10. William Shakespeare married Anne Hathaway on 27th November 1582. How old was he at the time?

And finally, the bit you've all been waiting for. Bye! (and don't forget the beer festival)

Andy Pirson

# Crossword

Compiled by DAVE QUINTON



Name \_\_\_\_\_

Address \_\_\_\_\_

All correct entries received by first post on 19th November will be entered into a draw for the prize.

The prize winner will be announced in the February London Drinker.

The solution will be given in December's edition.

All entries to be submitted to:

London Drinker Crossword

25 Valens House

Upper Tulse Hill

London SW2 2RX

## AUGUST'S SOLUTION



£20 PRIZE TO BE WON

## ACROSS

1. Man went down with a cry of pain. [6]
4. Company to support striker? [5]
8. Graze with small slap [5]
9. Please bet on the old lady. [7]
10. Points he can alter to improve quality. [7]
11. Article reflected on her. [4]
12. Resort in Spain. [3]
14. Scoured A to Z for tool. [4]
15. Run fast, river! [4]
18. Music that's about average. [3]
21. Intends to produce first class writing. [4]
23. Marines demolished what's left. [7]
25. Card game? Bridge? [7]
26. Get up for a knight. [5]
27. An extra something for the equestrian. [5]
28. Importance of island importing energy. [6]

## DOWN

1. He can't eat more speedily. [6]
2. Rejoiced over huge bust up in London Drinker. [7]
3. Meet death in bid to become criminal. [8]
4. Sound reason for bird calls. [4]
5. Start to live with spirit. [5]
6. An American woman overseas. [6]
7. Moves sideways to trim borders. [5]
13. Water found at a horse fair? [5,3]
16. Complaining over the fence. [7]
17. There's meat for each basket. [6]
19. Police initially called after crash. [5]
20. A pleasant smell is rising up. [6]
22. Put back material that's dug up. [5]
24. North African upland. [4]

Winner of the prize for the June Crossword:

Charles Creasey, Balham, London SW12

Other correct entries were received from:

Ted Alleway, Cpt. Alan Bird, Chris Bird, Sally Birkett, Steve Block, John Butler, Chris Fran & a spotted dog, Michael Clover, Paul Curson, Mrs. C.Daly, John Dodd, Richard & Clever Clogs Douthwaite, Brian Exford, Conor Fahy, Mike Farrelly, Benny Fischel, Arthur Fox-Ache, Sally Fullerton, Gillian Furnival, Antony Gdula & Jess the border collie, B.Gleeson, Paul Gray, J.E.Green, Alan Greer, Alan Groves, Stuart Guthrie & Arthur Beninajug, Peter Haines, John Heath, Andrew Hide, Graham Hill, William Hill, A.Jenkins, Claire Jenkins, Les Jenkins, David Jiggins, D.M.L.Jones, Mike Joyce, P.Kerrigan, Pete Large, Marj & Gerry Lopatis, Paul McGill, S.Magin, Steve Maloney, G.Mitchell-Gears, S.Mooksan, M.J.Moran, Al Mountain, Alan O'Brien & Offramp, Michael Oliver, Stuart Osgood, Mark Pilkington, Charlie Pottins, Rod Prince, Derek Pryce, Alf River & Tom Cat, Paul Rogers, Richard Rogers, Sarah Rose, Stephen Rose, Suzette Sang, Bryan Smith, Alina Syed, Ken Taylor, Bill Thackray, Dave Thomson, Andy Wakefield, P. Watson, Martin Weedon, Elizabeth Whale, Ken Wight, Sue Wilson, David Woodward, Peter Wright & the Missus.

There were also 11 incorrect and one incomplete entry.



# The Cricketers



*47 Shirley Road,  
Croydon  
CR0 7ER  
020 8655 3507*

*Croydon & Sutton CAMRA  
Pub of the Year 2007*

*A family run pub with  
a friendly atmosphere*

*Harveys ale on permanently ♦ 5 rotating ales from micro-  
breweries ♦ Home cooked food available midday to evenings*

## FORTHCOMING FIXTURES

*Announcing*

# OUR OVER 60's CLUB

between 12 and 5pm  
Monday to Friday

**A choice of four meals for  
£3.50 each**

# HOGS BACK



## GET REAL!

Hogs Back Brewery Ltd, Tongham, Surrey,  
GU10 1DE. Tel: 01252 783000. [www.hogsback.co.uk](http://www.hogsback.co.uk)