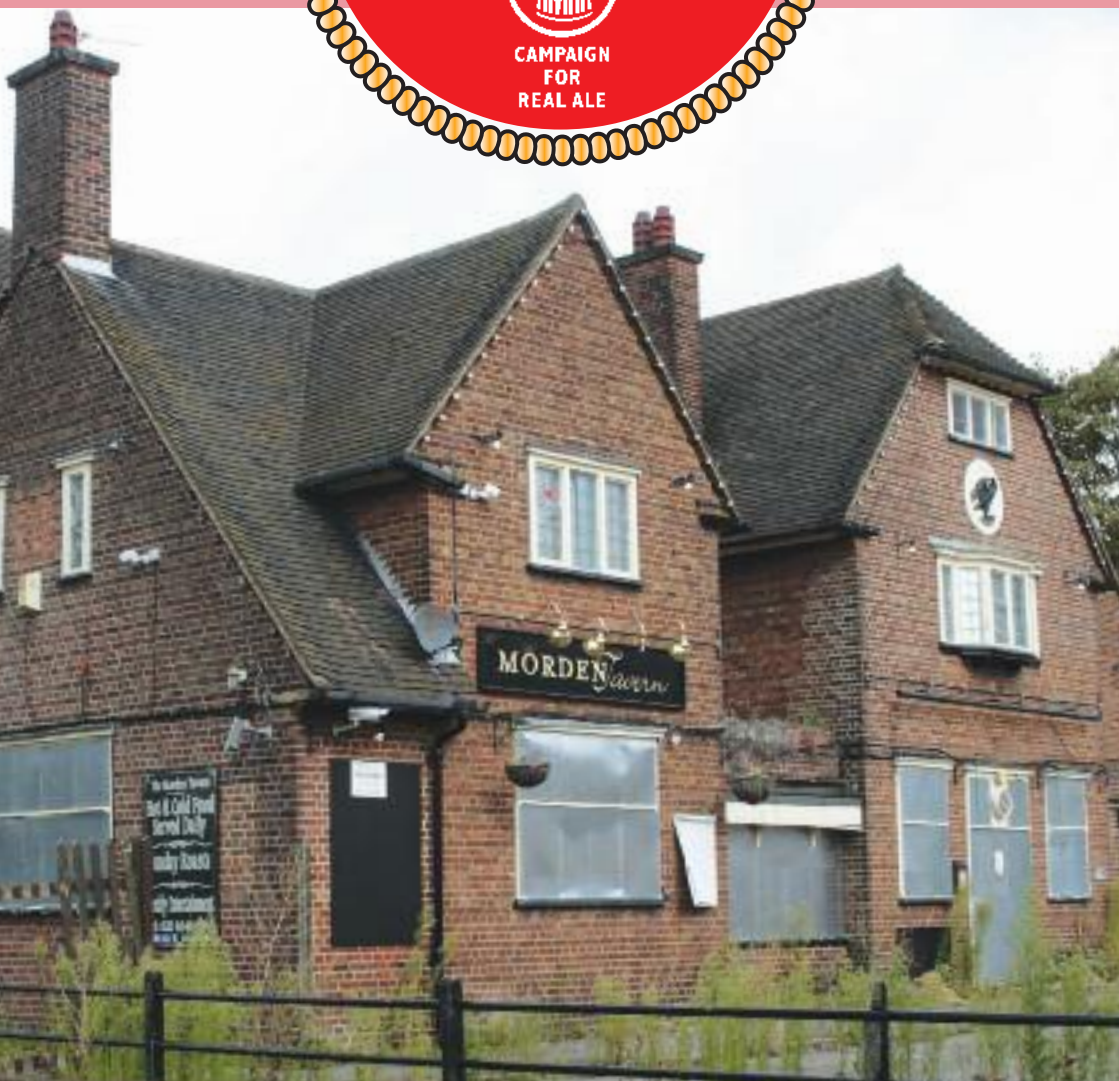


Vol 34
No 1



Feb
Mar
2012



Localism legislation, largely lacking, lends lustre to Morden Tavern (see page 28)



134 - 136 Sisson Way, London N19 4L2

Tel: 020 7281 2786



*...Six Cask Marque
accredited real ales
always on tap and
40+ malt and blended
whiskies also now on.*

*All proper, fresh
Steakhouse food.*

Food is served:

Tuesday-Friday 5-10pm

Saturday 12-10pm

Sunday 12-8pm

Please book your Sunday Roast

NORTH NINETEEN

Steak & Ale House

SET MENU SALE

- ◆ 3 course meals for just £16! - or
- ◆ 3 courses for just £21
including a 10oz sirloin or rib-
eye steak - or
- ◆ A two course meal (starter and
main or main and dessert) for
just £11.50

*So much choice there is something for
everyone... oh, and Cask Marque
accredited ales!*

You can follow us on Facebook for all events and updates and on
Twitter@north_nineteen

**Membership discounts on ale available,
sign up at www.northnineteen.co.uk**

In the main bar:

Tuesday - Live music and open mic 8pm start

Wednesday - Poker Tournament 7.30pm start

Dart board and board games always available

Prefer a quiet pint?

Our Ale and Whisky Bar is open daily for food,
drinks and conversation. We always have six well
kept real ales and 40+ top quality whiskies.



*Cask Marque
accredited*

There are no strangers here, just friends you haven't met yet



London Drinker is published by Mike Hammersley on behalf of the London Branches of CAMRA, the Campaign for Real Ale Limited, and edited jointly by Sarah Bleksley and Mark Davies.
Tel: 07747 494840.

Material for publication should preferably be sent by e-mail to ld@daviesolutions.co.uk.

Correspondents unable to send letters to the editors electronically may post them to Brian Sheridan at 4, Arundel House, Heathfield Road, Croydon CR0 1EZ.

Press releases should be sent by email to ldnews.hedger@gmail.com

Changes to pubs or beers should be reported to Capital Pubcheck,

2 Sandtoft Road, London SE7 7LR or by e-mail to capitalpubcheck@hotmail.com.

For publication in April 2012, please send electronic documents to the editors no later than Wednesday 14th March.

SUBSCRIPTIONS: £4.00 for mailing of 6 editions or £8.00 for 12 should be sent to Stan Tompkins, 52 Rabbs Mill House, Chiltern View Road, Uxbridge, Middlesex, UB8 2PD (cheques payable to CAMRA London).

ADVERTISING: John Galpin
Tel: 020 3287 2966.

Printed by Cliffe Enterprise,
Eastbourne, BN22 8TR

Views expressed in this publication are those of their individual authors and are not necessarily endorsed by the Editor or the Campaign for Real Ale Limited.

Advertise in the next
LONDON DRINKER

Our advertising rates are as follows:

Whole page £325 (colour)
£260 (mono)

Half page £195 (colour), £145 (mono)
Quarter page £105 (colour), £80 (mono)

Phone John Galpin now on
020 3287 2966, Mobile 07508 036835
johngalpinmedia@gmail.com

In this issue

News round-up	8
Letters	26
Local campaigning	28
Kernel Brewery	35
Branch diaries	36
Winning Bokbiers	38
LocAle pubs	40
Capital Pubcheck	42
Membership form	47
A Publican's view	56
Idle Moments	60
Crossword	62

What now for the tie?

I'm sure that many of the visitors who are coming to London for the Olympics will be looking forward to visiting a good old British pub. I wonder what they will find.

The total iniquity of the tied house system as it operates between the major pub companies (pubcos) and their tenants has been mentioned frequently in these pages. This system permits rents to be based on the landlord's formula rather than the market value, allows the supply of beer etc at inflated prices – sometimes by 45% – and in effect penalises licensees for being successful. It also makes the tenant responsible for all repairs and insurance, even though maintenance of the pub may have been neglected for years. Whilst our old friends the smoking ban and the 'current economic crisis' have not helped, many of us believe that it is the tie that is the root cause of the drastic decline in pub numbers seen in recent years. Those tenants who battle on often find themselves working an 80-hour week for what works out to be well short of the Minimum Wage. If the tenant goes bust, tough. The pubco has still got an asset that can be sold off for redevelopment. Even if the tenant is surviving, they might find the pub sold off over their heads anyway.

CAMRA recognised this when they made their 'supercomplaint' to the Office of Fair Trading some four years ago. While that was not successful in itself, it did serve to draw the situation to the attention of what has since become the

House of Commons' Business, Innovation and Skills Committee (BISC). Business Secretary Vince Cable made it very clear that they were not prepared to see the system continue and asked the pubcos to put matters right. If they did not then the committee would seriously consider statutory regulation.

Last autumn, the BISC began their hearings to review the situation. Although there had been discussions within the trade, the committee was not satisfied with the progress made and their report recommended a statutory code of practice with an independent adjudicator to manage the relationship between pubcos and tenants. Sadly, Ed Davey, the Minister for Employment Relations, Consumer and Postal Affairs (to give him his full title), following the Government's stance on business regulation, still preferred the self-regulation option. He therefore concocted a last-minute deal with the British Beer & Pub Association (BBPA) who are, to all intents and purposes, the trade body for the pubcos though their new chairman, Mark Hunter, is the chief executive of brewers Molson Coors.

The deal centred around the BBPA's 'Pub Industry Framework Code of Practice for Tied Tenanted and Leased Pubs', which was to be strengthened and made legally binding, plus the creation of a 'Pub Independent Conciliation and Arbitration Service' (PICAS). Given that the framework code was drawn up by the BBPA and

that PICAS was to be funded by the BBPA membership, there was reason to ask just how fair and independent these measures would be. That said, the Federation of Licensed Victuallers Associations (FLVA) and the British Institute of Innkeeping (BII) signed up to the deal although they concede that 'much work remains to be done.' Sorry about all these initials by the way.

The BISC were not happy about this and they were not alone. Mike Benner, CAMRA's chief executive, said: *"The Government has been cavalier in rejecting the recommendations of the BISC and instead putting its faith in the ability of the very companies accused of malpractice to finally put their house in order. The lack of any formal public consultation on this package of measures is truly remarkable and suggests a failure of Government to listen to all interested parties including the consumer."* The view of Greg Muholland, chair of the All-Party Parliamentary Save the Pub Group, was: *"This is a quite baffling response from the Government, considering that ministers clearly signed up to the plan put in place by BIS in March 2010, which was to legislate and rebalance the industry if the pubcos failed to reform. There are clear questions of ethics here. Effectively ministers have been negotiating with one side of this long standing dispute, without the other side even knowing about it and haven't even consulted with*

the majority of industry organisations about what should be in the codes of practice." Simon Clarke of the organisation Fair Pint, which represents pub tenants, commented, *"This will be a huge loss and devastating blow to tenants. The government promised that if the Select Committee found the pub companies were left wanting, it would act on it. It makes it look like they have done something but they have done nothing of any material difference which is a bitter blow. It is a U-turn by the government."*

Happily, Adrian Bailey, the chair of the BISC was not prepared to accept the decision and the committee put down the following motion for debate:

That this House believes that the Department for Business, Innovation and Skills' proposals for reform of the pub industry fall short of the undertaking given to the Business, Innovation and Skills Committee in July 2010 and that only a statutory code of practice which includes a free-of-tie option with an open market rent review and an independent adjudicator will resolve the contractual problems between the pub companies and their lessees; and calls on the Government to commission a review of self-regulation of the pub industry in the Autumn of 2012 to be conducted by an independent body approved by the Business, Innovation and Skills Committee.

THE
BAR
GANTS HILL

AWARDED



South West Essex CAMRA Branch
London Area Pub Of The Year 2011

A contemporary bar with traditional values



Gants Hill Spring Real Ale Festival

Thursday 22nd - Monday 26th March

Mainly featuring high quality, hand-crafted ales
from Thornbridge, Dark Star and Mighty Oak.

TheBarGantsHill.co.uk

020 8551 7441

Opposite Gants Hill Tube Station

19 Sevenways Parade, Woodford Avenue, Gants Hill, Ilford IG2 6JX



**NOW
DELIVERED
TO LONDON
VIA VALE
BREWERY**

**A new micro-brewery from Aylesbury in
Buckinghamshire**

LIMITED EDITION BEERS!

**We look forward to taking drinkers on a
voyage of discovery, with beer styles new
and old from around the world**

www.aylesburybrewhouse.co.uk
Email: info@aylesburybrewhouse.co.uk
Call Kate or Anna on 01844 239 237

Follow us on

[@AylesburyBrewCo](https://twitter.com/AylesburyBrewCo)



*SIBA National Gold 2008
Oxford Beer of the Year 2010
Reading Beer of Festival 2010*

Brill Beer!



**Brewers of award-winning beers from
Brill, Buckinghamshire**

NOW DELIVERING DIRECT INTO LONDON!



*CAMRA GBBF Bronze 2009
Midlands SIBA Silver 2010*



Follow us on


ValeBrewery


[@ValeBrewery](https://twitter.com/ValeBrewery)

www.valebrewery.co.uk Email: info@valebrewery.co.uk
Call Kate or Anna on 01844 239 237

The motion was debated on 12 January and after the customary 'full and frank exchange of views', it was passed unanimously. I would like to think that the lobbying of their MPs by some 5,000 CAMRA members helped, as did that of organisations such as the Federation of Small Businesses and the Forum for Private Business. Mike Benner, CAMRA Chief Executive said, *"CAMRA is delighted that MPs from all parties have highlighted the inadequacy of the Government's attempts to tackle unfair business practices in the pub sector and that the Government are now obliged to commission an independent review into the matter. Following the success of this motion the Government now has a chance to think again and to consult on meaningful proposals to ensure the survival of many thousands of pubs. The large pub companies must be encouraged to provide their lessees with free of tie and guest beer options accompanied by an open market rent review. These steps would effectively self regulate the operation of tie agreements. The large pub companies have been living in the last chance saloon since 2004 during which time many thousands of valued community pubs have been lost forever while pub companies have failed to deliver meaningful self regulation."* The Public Affairs team at CAMRA HQ also deserve some acknowledgement here.

I might add that while looking through various newspaper cuttings and press releases, I have not seen any comment on these recent events from either Vince Cable, the man who started it all and who is, after all, Ed Davey's boss, or Bob Neil, the minister with responsibility for pubs.

So where now? We have won a good battle but perhaps not yet the war. The Government may not accept the motion or may try to delay and obfuscate its implementation. We need to remain vigilant. We are the Campaign for Real Ale and real ale needs pubs. The view of one pub tenant in my CAMRA branch area is that dozens of pub tenants will be throwing their keys back after Christmas. We must give them the hope that it is worth carrying on.

One final point: CAMRA is not against the tied house system in principle. It was originally created by brewers to give themselves secure sales volumes and that can be a very good arrangement for all concerned, especially for small and medium-size breweries. It just needs to be operated fairly and, in particular, no brewery tenants should ever find themselves paying more for their brewery's beer than what it sells for in the free trade.

Tony Hedger



realale.com

Over 90 quality ales, ciders and perries, including a European selection, available online or call **020 8892 3710**

Visit our shop:
371 Richmond Rd
Twickenham
Middlesex TW1 2EF

JOIN OUR
ALE CLUB
FOR 3, 6, 9 or 12
MONTHS

**The
Fox**

Green Lane,
Old Hanwell,
London W7
Tel: 020 8567 4021

**CAMRA West
Middlesex
Pub of the Year
2005, 2007,
2010 and 2011**

We're a unique family-run pub with award-winning beers and freshly cooked food; a welcome pit stop for visitors to the Grand Union Canal and Hanwell Flight of Locks.

**Easter Beer Festival
April 6th, 7th, 8th
and 9th**

Weekday lunch available 12 - 3pm

**Evening menu available
Tues - Sat 6 - 9.30pm**

Saturday Brunch 12 - 4pm

Sunday Roasts 12.30 - 3pm

Email: thefox@oldehanwell.fsnet.co.uk

"HISTORIC BEERS AT AN HISTORIC BUILDING"



OFFICIAL BEER GLASS SPONSOR

THIS YEAR WITH 100 NEW &
HARD TO FIND BEERS PLUS
YOUR FESTIVAL FAVOURITES
FROM 5%-12% ABV.

20 CIDERS & 20 WINES BY
THE GLASS.

MORE INDOOR SEATING
THIS YEAR.

CHEAP FESTIVAL FOOD.

LIVE MUSIC
FRIDAY & SATURDAY NIGHT.



LE GOTHIQUE & GARDEN

**THE ROYAL VICTORIA PATRIOTIC BUILDING
OFF JOHN ARCHER WAY, LONDON SW18 5SX**

10 MINS BUS RIDE FROM CLAPHAM JUNCTION (219 OR 77), GET OFF AT THE WINDMILL OR
15 MINS WALK THROUGH WANDSWORTH COMMON FROM WANDSWORTH COMMON STATION

THURSDAY 1-11PM FRIDAY 1-11PM SATURDAY 1-11PM

Pre-register on www.wandsworthbeerfestival.eventbrite.com

In conjunction with Le Gothique Bar & Restaurant. www.legothique.co.uk • Tel: Mark 020 8870 6567

Happy New Year to you all

Over Christmas I found this quotation from William Blake: *"The tree that moves some to tears of joy is in the eyes of others only a green thing that stands in the way."* Perhaps that can be applied to pubs as well. Whilst not losing sight of other matters, I think that we should dedicate 2012 to saving our pubs, from both greedy pubco landlords and rapacious property developers.

A New Year's resolution

This is a bit of a cheek because I haven't kept one in my life but can I ask publicans to think about this? Now that some pubs are – perfectly understandably – shortening their hours to match trade and with apologies to those who already do so, can we have opening hours clearly displayed outside all pubs, especially where permitted hours and actual hours may not be the same? It doesn't take much effort and it would re-

ally be helpful to customers.

Dry days and holidays?

The House of Commons Science and Technology Committee has reported on alcohol consumption. It wants us all to have at least two 'dry' days a week as is recommended in Scotland and which is something that I know many people do anyway. The committee is concerned that current advice on regular drinking is confusing and that few people understand the 'alcohol units' system, leading them to believe wrongly that enjoying a few pints of beer or glasses of wine every day will not harm health. They also want new advice issued as regards what constitutes 'binge-drinking' and lower safe levels for older people. This will be part of a full review of drinking guidance by the Department of Health. The last one was 15 years ago when the '21 units per week for men and 14 for women' guidelines were introduced. The chair of

the committee, Andrew Miller, said, *"Alcohol guidelines are a crucial tool for Government in its effort to combat excessive and problematic drinking. It is vital that they are up-to date and that people know how to use them."*

Sorry but I think that the Committee have got it wrong. They have ignored medical research, as highlighted by CAMRA in its submission to them, that suggests that moderate daily alcohol intake could be good for the health by lowering levels of cholesterol in the blood and have failed to appreciate that it is not that people don't understand the units system, they just don't believe it. It fails to take account of the stunningly obvious fact that we are all different shapes and sizes and have different metabolisms. The Committee comes close to acknowledging this with another of their ideas which is a website (inevitably) on which you can work out your individual intake based on age, weight,



The Roebuck

72 Hampton Rd, Hampton Hill,
TW12 1JN. Tel: (020) 8255 8133

Terry Himpfen and the girls
welcome you to his distinctive
community pub with a
veritable treasure trove of
memorabilia on show.

The small award winning walled garden has a summer house and a new gazebo for smokers. Four Bed & Breakfast rooms also available, all En-Suite with TV. Pub open 11am to 11pm (11:30 Fri & Sat) Noon to 4pm, 7pm to 10:30pm Sun. Buses R68 and 285 stop close by.

Voted Pub of the Year 2008 by CAMRA's Richmond & Hounslow Branch.

TWO VERY ENGLISH ROSES



"A premium drinking den, full of one of the biggest selections of bottled beers I have seen in London as well as independently brewed ales and ciders"

thepurveyor.com

"It's a bigger and more ambitious project than the Bree... but if you're not local it's well worth making the trip"

Des de Moor



During the 6 Nations Rugby tournament, alongside our favourite independently brewed English beers and ciders, The Duchess of Cambridge is running:

4th - 10th February
SCOTTISH Beer Festival



11th - 24th February
ITALIAN Beer Festival



25th - 9th March
WELSH Beer Festival
(including St. David's Day
1st March)



10th - 16th March
FRENCH Beer Festival



17th - 25th March
IRISH Beer Festival
(including St. Patrick's Day
17th March)



All matches will be shown live in the bar, or why not book our private room for a buffet and beers for your clients and friends?

320 Goldhawk Road, Stamford Brook, London W6 0XF Tel: 020 8834 7336
enquiries@theduchessofcambridgepub.com www.theduchessofcambridgepub.com
The Bree Louise 69 Cobourg Street, London NW1 2HH
info@thebree Louise.com www.thebree Louise.com

and family history.

The committee also wants an 'expert group' of civil servants and scientists to review the current evidence on the health effects of alcohol so as to "*increase public confidence*" whilst a Department for Health spokesman said: "*It's crucial that people have good advice about alcohol so they can take responsibility for their own health.*" Yes indeed to both of those but please, do not insult our intelligence.

One interesting aside was that whilst the Committee accepted that the help of the drinks industry is needed to help improve labelling on bottles and glasses, it saw possible conflicts of interest if the Government was to work too closely with brewers and shops.

I have come across a thought-provoking article by social anthropologist Kate Fox of the think-tank the Social Issues Research Centre, arguing that our reaction to alcohol is cultural rather than chemical. It is worth reading because it stands

the current received wisdom on its head. I will try to include as much of it as I can next edition.

Curiously, this is not a new debate. According to what I heard on Melvyn Bragg's BBC Radio Four programme '*In Our Time*', the Ancient Greek philosopher Plato encouraged all older people to drink, even to get drunk, in order the better to enjoy themselves, particularly to dance. And young people, he thought, should drink to test their manhood. Subsequently, another Greek philosopher, Galen of Pergamon, said that the soul must be part of the body, because when you are drunk it changes your state of mind and body.

VAT's the way to do it...

A campaign called 'Thrive on Five' has been bubbling under for some months now. Started by the trade paper, the *Publican's Morning Advertiser* and supported by Tim Martin of J D Wetherspoon, Greene King,

Marstons, Spirit and CAMRA amongst others, its aim is to have the Government reduce the VAT chargeable by restaurants, pubs and hotels on food and drink to 5% by 2014. It is largely based on what has happened in France, where the rate for the so-called hospitality sector has been reduced to 5.5%,- and it is advised by Jacques Borel, the entrepreneur who led the campaign there. Mr Borel believes that the rate cut could create some 320,000 new jobs in the UK. Even in Ireland, despite their deep economic problems, the rate has been cut from (then) 13% to 9%.

Unfortunately, the first response from the Government was unhelpful. The minister responsible, David Gauke, replied to one MP who put forward the idea on behalf of a licensee in his constituency, "*We have no compelling evidence, nor have we been presented with such evidence*

The Boaters Inn



Riverside Pub and Garden

10 mins walk from Kingston Rail Station
and Richmond Park.

Five real ales on all the time, an ever-changing seasonal selection from local and guest breweries.

Mulled Cider, Perry and Wine.

Heated riverside garden.

Fresh, seasonal food served every day.

Live jazz every Sunday from 8.30pm.

Canbury Gardens, Kingston-Upon-Thames
Surrey KT2 5AU Tel: 020 8541 4672

www.boaterskingston.com

enquiries@boaterskingston.com

Follow us on Twitter @theboatersinn

THE BRICKLAYER'S ARMS

LEGENDARY
YORKSHIRE BEER FESTIVAL

22ND - 26TH FEBRUARY 2012

featuring over 100 real ales, ciders and perries

no admission fee. £2 returnable glass deposit.

THURSDAY: MAJESTIC BRASS

FRIDAY: THE JOHN ONGOM BIG BAND

SATURDAY: THE HAMMERSMITH MORRIS MEN

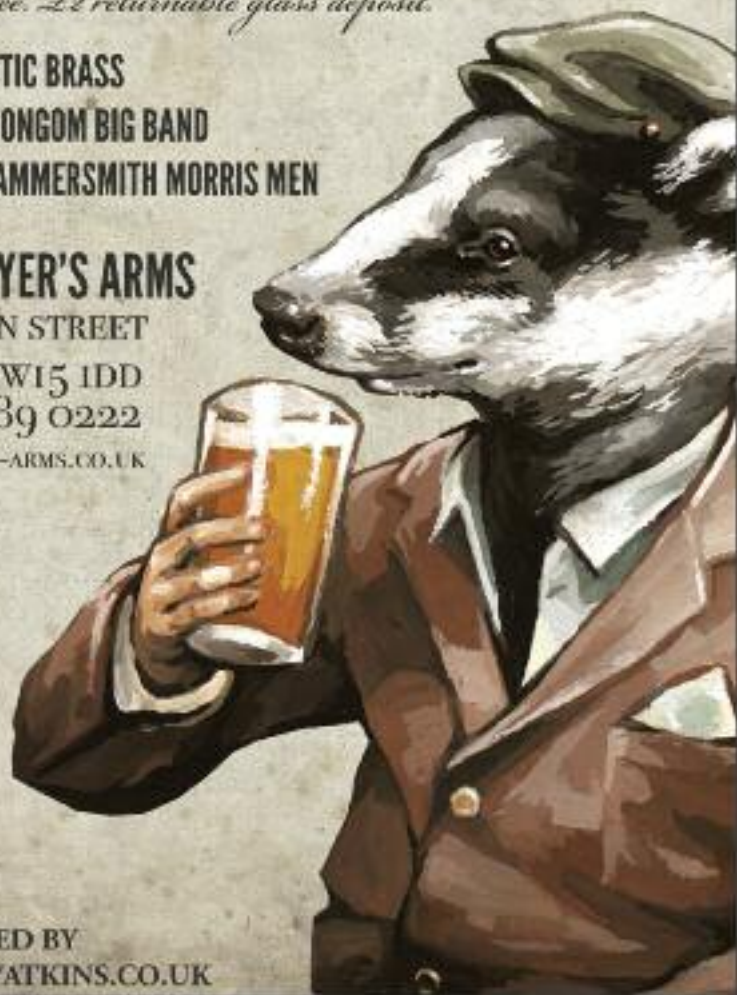
THE BRICKLAYER'S ARMS

32 WATERMAN STREET

LONDON SW15 1DD

TEL: 020 8789 0222

WWW.BRICKLAYERS-ARMS.CO.UK



ILLUSTRATED BY

WWW.TOBYATKINS.CO.UK

that leads us to believe there is a strong case for what the constituent is suggesting."

Despite that rebuff the campaign continues and widens. In September, Brighton & Hove City Council wrote to the Home Secretary suggesting that differential rates of VAT for the 'on' and 'off' trades would help in dealing with binge drinking. With minimum pricing likely to be ruled illegal – we await developments in Scotland here – it may well be that a VAT reduction will be a much more practical way of dealing with the problem of cheap supermarket alcohol sales. It would, of course, not be the complete answer to the problems faced by the pub trade but there may be more sense in reducing pub prices rather than trying to artificially raise those in supermarkets. That said, many licensees might not be in a position to pass on the VAT reduction, but it might help to

keep the pub open.

When local isn't always good...

At one of South-East London's best known cask ale pubs, Hoopers, in East Dulwich. I won't go into too much detail as the matter was still unresolved as we went to press but it revolves around a complaint from a local residents about noise. Several CAMRA members from other parts of London submitted representations on an individual basis but these were rejected. The Licensing Act 2003 requires representations to come from an 'interested party' which means persons who live or are involved in a business in the vicinity or organisations that represent them. Note the word vicinity; it is not defined in the Act and in Southwark Council's usage, its definition, '*will vary from application to application depending on the size and type of operation being proposed.*'

This strikes me as being particularly unfair to pubs. No urban pub survives on trade from its 'surrounding district' (OED definition). Surely regular, if not necessarily frequent, visitors from elsewhere have a right to be heard if an amenity that they enjoy is under threat? Similarly, if a pub puts on bands then that band's following is not likely to be strictly local. There is some hope however. At least one submission has been accepted in the name of CAMRA as a 'responsible body'. This could be a useful precedent.

Another odd situation has arisen over complaints to local council trading standards services. Westminster City Council, for one, will only take complaints from or give advice to Westminster residents or businesses. They say that if you are a non-resident, you should contact your own local authority trading standards service or the national body, Consumer Direct. Your own local authority or Con-

ASCOT ALES
'Thoroughbred Handcrafted Ales'

Ascot Ales logo featuring a rooster. Below the logo are several circular beer labels: Alligator, Penguin Porter, and others. At the bottom, the text reads: Ascot Ales, 01276 686696, Web: www.ascot-ales.co.uk, E-Mail: info@ascot-ales.co.uk

DORKING BREWERY

Below the logo is a photo of three beer taps and a glass of beer. The text below the photo reads: "Seriously good ales"

SIBA Dorking Brewery is a member of SIBA and our ales can be ordered through the DDS scheme

The Brewery at Dorking Ltd.
Engine Shed, Dorking West Station Yard, Station Road, Dorking RH4 1HF
Tel: 01306 877988 Email: info@dorkingbrewery.com

Now
open in
Clerkenwell



The largest range of craft beer on tap in London
serving ale and cider from the smallest and finest UK micro-breweries.
Rare and exclusively brewed beers available.

Situated in a Grade II listed building
within easy walking distance of four tube stations.

16 CASK • 21 KEG • 300+ BOTTLES

THECRAFTBEERCO.COM

[FACEBOOK.COM/THECRAFTBEERCO](https://www.facebook.com/thecraftbeerco)

[@THECRAFTBEERCO](https://twitter.com/thecraftbeerco)

82 LEATHER LANE, CLERKENWELL, LONDON, EC1N 7TR

sumer Direct will then refer the matter to Westminster Trading Standards if they think that it is appropriate. That is not much use if you are a visitor from abroad, of whom Westminster must see more than any other London borough in a normal year, let alone an Olympic one. I would welcome further official clarification.

Law and order

The 'Police.uk' website where you can look up crime rates and trouble spots on a local basis will shortly be adding 'problem' individual pubs and clubs to its data. Presumably being recorded here will be used as evidence for opposing licence renewals for those premises. That could prove interesting.

Before Christmas, two men wanted on suspicion of a series of bag thefts went into the Merchant on Battersea Rise. Unfortunately for them, some of the local constabulary were having a 'do' there and they were recognised and arrested. Their 'MO' (*modus operandi*) as the police would say, was to look out for bags left on tables and if one was spotted, to cover it with a magazine. They then picked up the magazine – with the bag – and left. I'm sure that they were not the only ones pulling this stunt, so be aware.

Local brewery news

There was a good turn-out at the London Brewers' Alliance event in October and, on the whole, it all continues to look good. Brodies were one of a number of breweries who brewed twelve different beers for Christmas and are planning to introduce oversize glasses in their home pub, the William IV at Leyton.

East London added a dark beer to their range for Christmas and were runners-up for Beer of the Festival at the last Leyton Orient Supporters Club event.

Tap East are now up and running at Westfields Stratford and hope to add to their existing range

of Extra Stout and Pale Ale.

London Fields are concentrating on supplying beer from the brewery. It is open from noon until 11pm every Saturday and there is food and live music as well as up to six cask-conditioned beers from the brewery. That said, they have also supplied cask beer to various events, including CAMRA's St Albans Beer Festival and some local pubs.

Redchurch beers were also seen on draught at the Orient event and their bottled beers are on sale at some 25 pubs. Thanks to Marion Robbins for the information on all of the above.

Moncada Brewery has started production and their beers have been on sale at the Bricklayer's Arms in Putney.

By the Horns in Summerstown have given their beers new names. The 3.8% ABV pale ale is now Stiff Upper Lip, the 4.7% pale wheat becomes Bobby on the Wheat and the 4.9% red ale is called Diamond Geezer. Some of these beers should be available at Battersea Beer Festival. If you are wondering where Summerstown is, its other claim to fame is Wimbledon Dog Track. The Tennis Club and the dog track are incidentally about as far apart as you can get – in more ways than one – and still be called Wimbledon.

Shepherd Neame's chief executive, Jonathan Neame, has warned that despite it being a good year for the company – turnover was up 5% to £121 million and profit up 10% to £8 million – the industry will still suffer from being overtaxed and over-regulated. He added that beer prices will have to increase above the rate of inflation in 2012 because of increases in the price of raw materials, particularly barley (by 30%) and glassware.

Camden Town Brewery have announced that they will not be brewing cask-conditioned beer for the immediate future.

News from Fuller's

In the half-year to October 2011, Fuller's registered significant increases in sales

across all areas of trading, with the hotels doing especially well. Total revenue increased by 6% to £128.2 million, giving pre-tax profits of £16.5 million – up by 5%. One in six barrels of Fuller's beer is now shipped overseas. By the end of the year, if exports continue at the same pace, Fuller's will be selling more beer abroad than they do through their own pubs.

There has been expansion at the brewery. Fuller's have invested some £4.5 million in installing additional conditioning tanks with a total capacity of 30,000 barrels and they still have funds to purchase more pubs so long as they are, as chairman Michael Turner puts it, '*the right assets at the right price*.' Mr Turner expects to make full use of the extended capacity during the Olympics where he believes that London Pride will be a leading brand.

Fuller's Pub of the Year award, the Griffin Trophy, has gone to the Queen's Head in Farnham, Surrey. Congratulations to managers John Hersey and Ellie Bedford accordingly.

News from Young's

Young's chief executive, Stephen Goodyear, is looking forward to a good year. He says, "*Unlike the rest of the country, I am quite upbeat. We will have the Queen's Jubilee and the Olympics. It will get people feeling good about life again.*" Given that in the half-year ended October their income increased by 33% to £90.5 million, you can see his point. Operating profit rose by 21.2% to £15 million. The company has also recently had its pub estate revalued and it is worth £497 million, an increase of £174 million, although this exercise created a notional pre-tax loss of £16.1 million. They now have 245 pubs, 152 managed and 93 tenanted.

Young's however continue to dispose of pubs. Further to my report in the last issue, planning



Use yours. Drink ours.

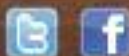


Now available at these
Nicholson's pubs:

- The Magpie** – 12 New Street, EC2M 4TP
- The Clachan** – 34 Kingly Street, W1B 5QH
- The Falcon** – 2 St John's Hill, SW11 1RU
- The Globe** – 83 Moorgate, EC2M 6SA
- The Old Bell** – 96 Fleet Street, EC4Y 1DH
- The Henry Addington** –
22 – 28 Mackenzie Walk, E14 4PH
- The Argyll Arms** – 18 Angel Street, W1F 7TP
- The Marquis of Granby, Westminster** –
41 Romney Street, SW1P 3RF
- The White Horse** –
15 Newburgh Street, W1F 7KY
- The Princess of Wales** –
27 Villiers Street, WC2N 6ND
- The Old Thameside Inn** –
Plextors Wharf, Dink St, SE1 3DG
- Ye Olde Watling** –
29 Watling Street, EC4M 9BR
- The Bear and Staff** –
10-12 Beer Street, WC2H 7AX



Please enjoy responsibly



www.sabrain.com



BRODIE'S BUNNY BASHER



**FRIDAY 6th SATURDAY 7th
SUNDAY 8th & MONDAY 9th APRIL**

11am TILL LATE

40 BRODIE'S AVAILABLE

LIVE MUSIC

SPECIAL FESTIVAL FOOD MENU

BREWERY TOURS

MEET THE BREWERS

BEER LIST



AWESOMESTOW IPA 7.0%
WINTER SAISON 7.0%
MENTAL HOP BASTARD TWO 5.0%
BRAINWAVE 4.0%
COLA MILD 3.2%
GRUIT ALE 4.8%
LONDON SOUR 4.6%
LIQUORICE CHERRY STOUT 10.1%
STING IN THE TALE 6.6%
SUMMER SAISON 8.0%
BRODIE'S BRICK 6.6%
ROMANOV RIOJA BARREL 12.1%
LONDON LAGER 4.5%
STEPNEY GREEN STEAM 4.2%
FUNKY COLD MEDINA 5.0%
WHISKY BARREL SCOTCH ALE 9.9%
SCANNERS 6.1%
CALYPSO IPA 7.0%
SIM COE IPA 7.0%
CHINOOK IPA 7.0%

MOTUEKA IPA 7.0%
LONDON FIELDS PALE 4.0%
BETHNAL GREEN BIT 4.0%
AMARILLA 4.2%
OLD STREET IPA 6.4%
CITRA 3.1%
CALIFORNIAN 5.3%
HACKNEY RED IPA 6.1%
BLACK IPA 7.0%
AMERICAN BROWN 5.3%
SUPERIOR LONDON PORTER 7.3%
WHITECHAPEL WEIZEN 4.5%
KIWI 3.8%
SHOREDITCH SUN 3.7%
MILD 3.6%
HOXTON SPECIAL IPA 6.6%
COLUMBUS 4 BREAKFAST 6.6%
BUNNY HOPPER 3.7%
ELIZABETHAN 22%
WEST END BEST 4.0%

**BRODIE'S
FABULOUS
BEERS**

KING WILLIAM THE FOURTH
815 HIGH ROAD LEYTON E10 6AE
'where Brodie's Beers are always £1.99 a pint!'
www.brodiesbeers.com

**BRODIE'S
FABULOUS
BEERS**

permission is now being sought to demolish the Queen Dowager and replace it with new-build houses. Sadly, the same fate seems certain to befall the Charlie Butler in Mortlake, another pub that Young's have sold to developers. This almost iconic purpose-built pub was the pride of the Young's estate when opened in 1968 and is named in honour of a long-serving head drayman. The former Young's licensee there, Crispin Mallet continued to trade for a while free-of-tie and with support from local residents and CAMRA had hoped to keep the pub open. Now sadly we hear that it will close on 26th February. Unfortunately the deadline for submissions to the Borough of Richmond-upon-Thames was 19th January. Residents of the borough can however still make their feelings known to their councillors. While the pub still stands, there is still hope.

Pub news

For many community pubs, diversification is essential so full marks to the Greyhound, a Greene King pub in Haynes, Bedfordshire. Licensees Shaun and Lisa Wilson have struck a deal with their local school to provide lunches. Mr Wilson said, *"We have the kitchen capacity and serve home-cooked food in the pub every day so when the school needed a solution for hot meals we all thought that it was a great opportunity. After all, it's only another 60 meals and it helps the whole community."*

Diversity in another direction has however been refused in Dover, Kent. Publican Paul McMullen, one time deputy features editor of the *News of the World* wanted to introduce topless bar staff to the pub that he now runs. He told the Dover Express, *"Discussing the size of tassels that would need to be stuck*

on the girls and whether or not they would be allowed to move while pulling pints was one of the more bizarre conversations I have had with the council." I think that at this point we should all make our excuses and leave...

The Brewery Tap in Wimbledon Village is reported to be due to be replaced by a branch of a ubiquitous coffee house chain. It is hard to see how that has improved the diversity of that particular high street, as envisaged in the Mary Portas review of our high streets. Her report came out just before Christmas and, as far as I can see, she makes no reference to pubs at all.

Among the residents fighting the battle to save the Morden Tavern (see page 28) are some bats – possibly up to five different species. If there are bats roosting there, then it could seriously hinder any redevelopment plans. Merton Council deny that there



01892 618140

sales@royaltunbridgewellsbrewing.co.uk
www.royaltunbridgewellsbrewing.co.uk



Member of the
Institute of
Brewers

Names and other on M&A (UK) and above the following

*Richmond's hidden gem, well worth seeking out!
Friendly welcome guaranteed from our staff, our regulars and us*

THE MITRE



20 St Mary's Grove, Richmond, Surrey TW9 1UY
Open acoustic music session every
Wednesday from 8.30pm

*A family-run traditional back street pub
Three real ales on pump
Fine wines at sensible prices*

*The tastiest toasted sandwiches always available
Real fire for cold days and dartboard still in use!*

Tel: 020 8940 1336

mitrericmond@hotmail.co.uk Find us on



are bats there now at all but, then again, it is the Council that is selling the site to the developers. There have been allegations that illegal attempts have been made to clear the roost and the Metropolitan Police's Wildlife Crime Unit has become involved. A member of the unit commented, "*In Britain all bat species and their roosts are legally protected so it is an offence to either intentionally, recklessly disturb a bat in its roost or deliberately disturb a group of bats or damage or destroy a bat roosting place, even if bats are not occupying the roost at the time. If that has happened it could be an offence under the Wildlife and Countryside Act 1981 (as amended).*"

Bank calls time on pub ownership

In the largest deal of its type for eight years, the Royal Bank of Scotland has finally sold off the so-called Galaxy portfolio of 918

pubs that it acquired in 2000 from Scottish & Newcastle Breweries, as they were then. This was back in the days when certain people in the City thought that owning pubs would be a licence to print money. No wonder the taxpayer ended up having to bail them out.

In the convoluted way of these things, the buyers, for £422 million, are the Scottish & Newcastle Pub Company, which is now a subsidiary of Heineken UK and has been managing the pubs for RBS anyway. Consequently the licensees will see little change. The pubs are mostly tenanted and are located all over the country. Some might even be in Scotland or Newcastle. Added to Heineken's existing 462 pubs, this makes them an influential market force.

It is thought – inevitably these days – that Heineken may look to dispose of the worst performing 200 pubs. Some 10% of the

estate had already been disposed of by RBS before the sale. According to Managing director Stefan Orłowski, who sees an important continuing role for the 'great British pub', the company's aim is to 'deliver long-term value from a high-quality pub estate.'

Other pubco news

I was wrong (again!) when I suggested that David Bruce might be too busy to come back into the pub trade. He and Clive Watson, with whom he founded Capital Pub Co, have teamed up with former Fuller's managing director John Roberts to form the City Pub Companies. There will be two: CPC East operating in London and east of the M40 and CPC West focusing on Reading, Oxford and out to the Cotswolds. The formula will be much as before in that they will take over struggling pubs, put them back on their feet and in due course sell them on.

•CAMRA SE London Pub of the Year 2011 •Good Beer Guide 2012

The Grape & Grain

Spring Beer Festival 2nd-5th March 2012

60+ ales and ciders from the very best micros in the UK

Food available all weekend

Discount for CAMRA members on food and 40p per pint discount on ales

Live music on Friday, Saturday and Monday evenings and Sunday lunch

2 Anerley Hill, Crystal Palace, SE19 2AA

Tel: 020 8778 4109

www.thegrapeandgrainse19.co.uk

Crystal Palace
Overground Station 3 mins
Crystal Palace
Bus Station 1 min

10 Real Ales, 3 Real Ciders



THE RED LION

Linkfield Road, Isleworth. Tel: 020 8560 1457



AREA CAMRA PUB
OF THE YEAR

FOOD ON
ALL 3 DAYS

FREE
ADMISSION

OVER 30
REAL ALES
+ CIDERS
& PERRY



Great London Beer Festival

With Ales brewed across the
Greater London Area

Fri 24th - Sun 26th February
Live Music Saturday & Sunday

Real Ales & Real Entertainment - A Real Local Pub

Visit our website at www.red-lion.info

Stonegate, who now operate some 550 ex M&B, Yates and Slug & Lettuce sites, are rumoured to be looking to acquire the Barracuda Pub Co, who operate the 200-strong Smith & Jones and Varsity chains. Barracuda were themselves looking to expand but a sale may be just as likely in the current climate. Stonegate may however face competition from private equity groups.

Brakspears – no longer anything to do with the beers that carry their name – have spent some £500,000 on refurbishing three of their central London sites, the Albert Arms in Southwark, the Bowler Pub & Kitchen in Clerkenwell and the Owl & Pussycat in Shoreditch. The pubs are run by multi-site operators, FiveEightZero and Proper Little PubCo. They are all food-led although the Owl & Pussycat does have Brakspear's highest barrelage in London. Chief executive Tom Davies

commented that the company had benefited from customers 'trading down' from restaurants and that they were looking for more London sites.

A new pubco to look out for is Barworks, who have taken a free-of-tie lease from Enterprise Inns on the Exmouth Arms in Clerkenwell. This is their 13th site in London and the privately-owned company plans to add more. Most outlets are diner-style operations but they will be opening a pub in Bethnal Green Road, the Well and Bucket, in April.

I have lifted the following from Simon Hoggart's column in the 24 December Guardian. A chap meets an old school mate and asks what he is up to these days. *I'm a cook, he says; I make food and serve drink to the lost, the wretched, the drunk and those who have nowhere to go. So you work in a soup kitchen?* says the friend. *No, Wetherspoons.* This story is, I

fully accept, grossly unfair but so was closing the Grid at Southfields. For balance, I must mention that the customers and staff of JDW's 35 pubs across South Wales raised over £10,000 for the fund set up for the families of the miners who lost their lives in the accident at Gleision Colliery.

M & B latest

Since the last issue, there have been more changes. The acting chief executive, Jeremy Blood, left and Bob Ivell became acting executive chairman. Although they still intend appointing a new chief executive, there has also been a management restructuring with the three operational managers leaving the company. Two of them had 23 and 25 years service with the company respectively while the third was being tipped in some quarters as being the next chief executive. Instead of



AVS CASK BEERS

QUALITY ♦ VARIETY ♦ VALUE

'The Discerning Publican's Choice'



*We can hold over 1000
firkins under
temperature control,
ensuring our customers
are receiving them in
optimum condition!*

- ♦ Family-run business
- ♦ Established in 1990
- ♦ Deliveries into London, Kent, Surrey and Sussex
- ♦ Ever-changing monthly promotions
- ♦ Permanent stock holding of over 60 different brands of cask ale
- ♦ Supplying licensed trade; public houses, working mens' clubs, sports clubs and hotels
- ♦ We also supply beers for beer festivals - from the CAMRA Great British Beer Festival to pub festivals
- ♦ Helping our customers wherever we can
- ♦ Distribution service for breweries through the SIBA scheme
- ♦ Stocking the full range of Westons Ciders



For more information, to receive our stock lists or to place an order..

AVS CASK BEERS, GRAVESEND, KENT

Call us now on 01474 537767 Fax: 01474 363569 Email: sales_avscaskbeers@btconnect.com

www.avscaskbeers.co.uk

ON YOUR BIKE

There are many Fuller's pubs near docking stations

Relax and refresh, be it with a coffee, a soft drink, a bite to eat or when you've finally docked, a rewarding refreshing pint of London Pride

Area	Docking Stations	Nearest Pubs
EC1	Bunhill Row	Artillery Arms, Bunhill Row
	West Smithfield Rotunda	Butcher's Hook & Cleaver, W. S'field
	Clerkenwell Green	City Pride, Farringdon Lane
	Farringdon Lane	
	Snow Hill	Viaduct, Newgate Street
EC2	Hatton Garden	Ye Old Mitre, Ely Place
	Sun Street	Fleetwood, Wilson Street
	Wood Street	Red Herring, Gresham Street
EC3	The Guildhall	
	Jewry Street	Chamberlains Hotel, Minories
EC4	Cheapside	Pine Line, Bow Churchyard
	Bouverie Street	Harrow, Whitefriars Street
NW1	Belgrave Street	Euston Flyer, Euston Road
SW1	Belgrave Square	Star Tavern, Belgrave Mews
	Eaton Gate	Antelope, Eaton Terrace
	St James' Square	Red Lion, Duke of York Street
SW7	Gloucester Road	Hereford Arms, Gloucester Road
W1	Broadwick Street	Ship, Wardour Street
	Wardour Street	Jack Horner, Tottenham Court Road
	Bayley Street	
W2	Baywater Road	Swan, Baywater Road
	North Wharf Road	Mad Bishop & Bear, Paddington Station
	South Wharf Road	
WC2	St Martin's Lane	Round House, Garrick Street

www.fullers.co.uk



three divisions, the company will move to nine 'more focused and accountable' brand groups. I will not repeat Mr Ivell's management-speak explanation of the move but my thought is that it might make it easier to sell off parts of the portfolio.

Despite the turmoil, the company continues to trade relatively well, with revenue rising 4.9% to £1.76 billion in the year ended 24 September, giving an operating profit of £288 million. The biggest growth area was food with Mr Ivell making the point that they were running restaurant pubs rather than pub-restaurants.

Much of this may be wiped out however because the company has also been hit by new problems arising from the interest rate swaps that were put in place as part of its Robert Tchenguiz-inspired property scheme. The interest rates that were intended to balance out their variable rate bonds have fallen, leaving them with a potential write-off of £235 million.

Other trade news

Something that I have missed reporting is that Adnams now have two of their 'Cellar & Kitchen' stores in London, in Spitalfields at 73 Brushfield Street, Old Spitalfields Market, E1 and in Bloomsbury at 30/31 Store Street, WC1. There has been one in Richmond-upon-Thames for some time.

The continuing problem with metal theft affects brewers because beer casks have long been easy targets. SIBA (the Society of Independent Brewers) have now introduced the grand-sounding National Container Repatriation Network (NCRNet) whereby if a SIBA member brewery does not collect its casks, a licensee can contact SIBA to request collection. SIBA are also setting up eight regional collection 'hubs' to simplify the normal return of casks. This

could be good news because more small breweries may be prepared to let their beer travel further afield if they can be confident of getting their casks back. It might also be useful to some beer festival organisers because uncollected casks can be a problem.

There is, of course, an easier way. At the last Watford beer festival the brewer from the Verulam Brewery noticed that one of his firkins had run out so he took it back to St Albans with him on the bus.

The licensee of the Summerhouse pub in Sedgeley, West Midlands, spent £3,000 on Christmas decorations. Let's hope enough of his customers got sufficiently lit up to make it worthwhile.

The big boys

According to the Coffey Peach Business Tracker, which records monthly performance across 24 major pub and restaurant operators, the trade situation is improving with like-for-like sales in November some 2.1% ahead of the position a year earlier. If you add in the effect of new openings, this rises to 6.2%. This is the sixth consecutive month of growth in what they call the 'eating and drinking-out-of-home market'. By comparison, the retail sector fell by 1.6%. Peter Martin, one of the authors of the report, commented, *"Going out to eat and drink seems to be the affordable treat that people are unwilling to give up."*

That view was echoed by Greene King chief executive Rooney Anand. He commented that, *"In this environment, the drinking-out and eating-out markets are performing well, delivering an 'everyday indulgence' to the UK consumer."* This was on the back of a rise of 9% to £527.5 million in their takings in the first half of their financial year, giving profits of £77.2 million. Mr Anand is another one who is

hoping that the Olympics will bolster what could otherwise be a difficult year.

GK have converted what could be the first of 20-odd pubs from their own estate to the Realpubs brand, the pub in question being the Maynard Arms in Crouch End. This very much reflects how Young's have integrated the Geronimo operation.

SABMiller have strengthened their position in Europe with a deal that gives Turkish brewers Anadolu Efes control of SABM's Russian and Ukrainian operations in return for a 24% stake in their company. This could be a shrewd move, given that the alcohol market in Russia is in decline.

More fun and games

Further to the TfL Commissioner's advice in the last issue, what do you do if your event finishes after 11pm? Hard luck; according to the *Evening Standard*, a general extension of opening hours to 1am during the period of the games has been ruled out by the Home Office because the police have told them that they will already be at full stretch and do not want the extra burden of patrolling high streets at the later closing time.

This has disappointed business and tourism leaders who remember that when opening hours were extended to 1am for the Royal Wedding in April, they did extra trade worth £600 million. Individual applications can still be made but most local authorities will doubtless follow the line being taken by Kensington & Chelsea Council who have said that they are unlikely to grant extensions if police resources are insufficient to deal with the risks presented.

Curiously, there appears to be no problem about the Home Office consulting on extending the opening hours on Friday 1 and Saturday 2nd June to 1am for the Queen's Diamond Jubilee.

Continuing the sporting

THE DUKE OF HAMILTON

EST 1721

23-25 NEW END • HAMPSTEAD VILLAGE • NW3 1JD

"Hampstead's last remaining local"

- Six immaculately kept ales & microbrews
- Hearty home cooked food & snacks
- Spacious Beer Garden
- A true community local

All ales £2.50 a pint
Mondays and Tuesdays.
See website for
ales on tap.



Tel: 020 7794 0258

twitter: @dukeofhamilton

www.thedukeofhamilton.com

**Best
London Pub of
the Year 2011
Fancy a Pint
Reviewers
Awards**



4 PINT RATED PUB



theme, well done to the Slingbacks, Rosslyn Park Rugby Club's ladies team, who put on another small but very enjoyable 'Winter Warmers' beer festival in December. This was their fourth event and the aim is to raise funds for the purely amateur team. This year, I believe, they are planning a tour to Canada.

A new way to 'phone a friend

Here are another couple of ideas for you gadget-freaks. Technology company Pint Drop have developed a system called 'Text Your Friends a Drink'. This allows you to send a 'virtual drinks voucher' to a friend's mobile phone. Each voucher has a unique code which bar staff type into a special device and the amount of the voucher, between £3 and £20, is redeemed accordingly. You have got to be impressed but what is wrong with just meeting your friend at the pub?

Some readers may remember that a few years ago, CAMRA produced some guides to real ale pubs near football grounds. The author, Richard Stedman, now a publican in Lancashire, is reactivating the idea but this time as an 'app' for Android 'phones. It is similar to the CAMRA GBG 'app' and gives the locations of pubs that are fan-friendly as well as having the best real ale choice in the respective town. For more information, go to <https://market.android.com/details?id=uk.co.footballandrealaleguide>.

...and finally

A-B InBev had to recall certain batches of their new *Stella Artois Cidre* when a number of bottles started exploding. According to the Food Standards Agency, "Due to yeast contamination, there is a risk of fermentation that may cause the bottles to burst unexpectedly." Isn't it sad that what some of us want to happen in some products

becomes a health hazard in others.

Before Christmas, a Wurzels tribute band, the Cornish Wurzels, released a song called '*Drink Up Yer Scrumpy*' to raise funds to pay for a statue of the late Adge Cutler, the Wurzels original singer, in his birthplace, Nailsea in Somerset. Alas, not a single copy was sold.

In Colorado USA in 1921, a brewery realised that the 'temperance beer' that it was producing to comply with the Prohibition laws could not compete with the illegal products also in circulation. So, in order to keep the company going, they switched to making ice cream. The healthy option?

Tony Hedger

E-mail to:
ldnews.hedger@gmail.com
Please use this address only
for news about real ale and
the pubs that serve it

ALE HOUSE

25 OF TODAY'S **BEST** ALES TOGETHER FOR THE FIRST TIME IN ONE GREAT PUB!

With DJs playing '50s & '60s
Rock'n'Roll
FRIDAY & SATURDAY NITE

Thursday 2nd-Sunday 5th February 2012

OPENING TIMES: Thursday 3pm-11pm; Friday 3pm-1am;
Saturday 12pm-1am; Sunday 12pm-11pm

THE SNOOTY FOX, 75 GROSVENOR AVE, N5 2NN
Opposite St Pancras Underground station, ten minutes' walk from Highbury & Islington tube
Follow us on Twitter @snootyfoxlondon or phone 020 7354 5532 for more information

CAMRA DISCOUNT for all hard-working members

snootyfoxlondon.co.uk

CAMRA North London
Pub of the Season
Winter 2011

ROCK

SUSSEX ARMS

ALE & CIDER HOUSE



ONE BIG BEER FESTIVAL

**18 HAND PULLS OF
REAL ALES & CIDERS**

2 LOG FIRES

LIVE MUSIC

HOMEMADE FOOD

15 Staines Road, Twickenham

Middlesex, TW2 5BG

020 8894 7468

www.thesussexarmstwickenham.co.uk



Dear Editors

After a sterling editorial debut in Oct/Nov LD, what's with the regurgitation in Dec/Jan LD of a tired old article on the theme of young female drinkers that was hacked to death in sister paper What's Brewing (the two-page futuristic techno-based article not relevant to present-day campaigning during a world recession)?

For a change, I would like to see a relevant article on why London CAMRA take-up of the BME community is so low. I noted fewer than five African Caribbean people during all of Pig's Ear 2011 in London's most culturally vibrant region near the heartbeat of the 2012 Olympics.

Helen Toomey, SE25

Author's response

The What's Brewing article was commissioned by Tom Stainer as part of a series on different aspects of the Campaign turning 40 years old. The theme of 'young female drinkers' is touched upon only through the fictional narrator being a young female. The article talks about LocAle, pubs, beer duty... themes actually very relevant to present day campaigning.

Shea Luke

Editors' note

We would indeed like to apologise for the accidental duplication of the April/May article which appeared on page 56 of the December/January edition. A fresh article had been intended.

Dear Editors

Surely the whole point about these pub closures is that in selling them off there is big money to be made by the brewery companies and the next thing you know is that it's either a luxury block of flats or a Sainsbury's or Tesco's. It's high property prices, particularly in the London area, that is fuelling the problem.

Young's and Fuller's are particularly bad for doing this, and I can think of numerous pubs of theirs that have gone over the last few years. I tend not to believe a great deal of their excuses that a pub is trading badly or is in need of modernisation. Many of these pubs have valuable architectural features and a fascinating history behind them.

Obviously there will be someone in their Estates department whose job it is to go round and identify which pubs are suitable for the sell off. It's just a profit taking thing for them, with no thought for the real ale drinker.

It's interesting to note that nearly all the pubs that close are in the London suburbs because this is where the development potential is there for them. I am a seasoned real ale drinker with many years' experience behind me, and I know what I'm talking about!

Howard Williams, Bushey



**LEYTON ORIENT
SUPPORTERS CLUB**

**MARCH ALE
FESTIVAL**

**THURSDAY 1st MARCH &
FRIDAY 2nd MARCH 2012**

FROM 5.00pm TO 11.00pm

✦ ADMISSION FREE ✦

*A fine selection of 30 guest ales
PLUS many ciders and perries
for you to enjoy. Snacks available.*

T/F: 020 8988 8288

E: loscinfo@aol.com

W: orientsupporters.org

**Just a few minutes from Leyton
(Central Line) Station. Buses 58, 69,
97, 158 & 308 to Coronation Gardens**

**LEYTON ORIENT SUPPORTERS
CLUB, MATCHROOM STADIUM,
OLIVER ROAD, LONDON E10 5NF**

**"a beer drinker's
mecca"**

**Good Beer Guide
2005-2012**

CAMRA MEMBERS' SHORT BREAKS
Second Night's Accommodation Free!
through 31 Mar 2012
direct flights from Luton, Gatwick & Heathrow



100 Belgian Beers
240 Single Malts

Real Ale & Cider
9 Ensuite Rooms

**the
ANDERSON**

restaurant • whisky bar • accommodation

Fortrose, by Inverness

tel. 01381 620 236

www.theanderson.co.uk

Dear Editors

Curiosity Corner

As much of my youth was mis-spent in the cavernous Cockney Pride, Piccadilly Circus, known for its pseudo-Cockney sing-alongs to a honky-tonk piano, I'm probably not best qualified to lecture on unusual music pubs. However, the wonderful Southampton Arms in Gospel Oak, NW5, justly popular with CAMRA for its ale and cider, features some enthusiastic piano playing in front of the wood fire on Tuesday, Wednesday and Sunday evenings. A perfect accompaniment to a pint of Winter Warmer! When pianists are absent, music comes from LPs on a record player behind the bar. Head to the 1930s vintage, ex-Truman Palm Tree, in Mile End Park, E3 and, aside from the curved bar and leaded windows in this timeless East End boozier, enjoy evening sing-alongs (Friday through Sunday) to a traditional band. Music from a different age is heard the Lamb in Lamb's Conduit Street, Bloomsbury, where a working polyphon is



mounted in a corner. This wood-cased music box is a Victorian invention that plays music mechanically but was superseded by the phonograph. The pub is another time-capsule, complete with snob screens and photos of long departed music-hall stars.

Bob Barton, Hayes

An early victory for localism

Campaigners for the Morden Tavern woke with sore heads on 13 January after celebrating a surprise but entirely commendable vote by Merton's planning committee the previous evening to reject officers' recommendation to approve a planning application that would have led, in effect, to the loss of the last of the St Helier Estate's three historic 'mega' pubs. The scheme for 23 properties would also have fatally compromised the Tavern's garden setting, contrary to national planning policies PPS3 and PPS5.



The Committee relied on several of their own LDF policies on urban design and the historic environment and will also be referencing new policies in the London Plan 2011 in their decision notice. Interestingly, they are not intending to rely on their Pubs Protection Policy, L16.

Campaign member Dale Ingram, planning consultant and pubs preservation officer for local SW London Branch, in her no-holds-barred speech to the Committee invoked the Localism Bill, the draft National Planning Policy Framework and the revised London Plan and renewed her warning that consenting the scheme might result in the Secretary of State calling in the application. Recent planning wins in Hackney on the Wenlock Arms and at the Grove in Wimbledon were also referenced. She said, "If ever there were a textbook response by a community in Localism terms to a threat to something they cherish, it has been the Campaign for Morden Tavern". The Localism theme of the objection was picked up by Conservative members of the Committee.

The 1932 Tavern by renowned pub architect Sir Harry Redfern (famous for the 'Carlisle Experiment') was Locally Listed in 2010 after research by the Campaign revealed its historic and

architectural significance. It has won a reprieve which will give the Campaign group time to develop their business plan to turn the pub into a community co-op, inspired by the example of the Hope in Carshalton and the 'Pub is the Hub' initiative, supported by CAMRA. The building, with its typical array of large rooms on the ground floor and multiple living and bedrooms upstairs, offers a myriad of opportunities for community-focused activity, such as a crèche, doctor's surgery, cycle 'park and walk' facility, internet café, or small pub hotel and so on.

The Morden Tavern meets all the criteria for inclusion on a Local Asset Register. The Registers are being created as part of the Localism Bill, and are intended specifically to protect local community facilities such as pubs, libraries, scout halls and the like. A building's Local Asset designation will become a material planning consideration. CAMRA branches should now be encouraged to ask their local planning authorities what steps are being taken to create Local Asset Registers in their area, and to nominate the pubs in their boroughs for recognition by registration.

Long faces all round on the developer's team as they left the council chamber, after their architect and his scheme were roundly criticised by members of the planning committee.

As one councillor said, "The whole thing, to me, smells."

Top marks to David Smith, chairman of the Campaign for the Morden Tavern, who, with a fellow local resident, also spoke persuasively at the hearing and whose vision, commitment and unremitting sheer hard work over the past two years is now being rewarded, and all credit to other members of the Campaign committee and local supporters standing up for their community.

*From a draft CAMRA press release
Photograph © Nick Brickell*

Advertise in the next LONDON DRINKER.

Our advertising rates are as follows:

Whole page £325 (colour), £260 (mono);

Half page £195 (colour), £145 (mono);

Quarter page £105 (colour), £80 (mono).

Phone John Galpin now on 020 3287 2966

Mobile 07508 036835

Email: johngalpinmedia@gmail.com or

Twitter@LDads

or on Facebook: London Drinker Ads

THE FINAL COPY DATE FOR ADVERTISING IN OUR
NEXT ISSUE (APRIL/MAY)
IS THE FIRST OF MARCH



Use yours. Drink ours.

REFRESHINGLY HOPPY WELSH ALE

SA Gold is a full-flavoured, hoppy and refreshing golden ale, brewed at the home of the famous Brains SA in Wales. The beer is late-hopped using Cascade and Styrian Goldings, giving it complex and refreshing citrus aromas and flavours. It's delicious on its own and also makes a great accompaniment to food.



For a full list of London stockists, visit our website or scan the below QR code.
www.sabrain.com/londonstockists



Please enjoy responsibly



www.sabrain.com

LONDON DRINKER

Beer & Cider Festival

7-9 March
2012



Camden Centre, Bidborough St, WC1H 9AU

(Nearest tube King's Cross St. Pancras)

Wednesday	7th March	12 - 3 5 - 10.30pm
Thursday	8th March	12 - 3 5 - 10.30pm
Friday	9th March	12 - 10.30pm

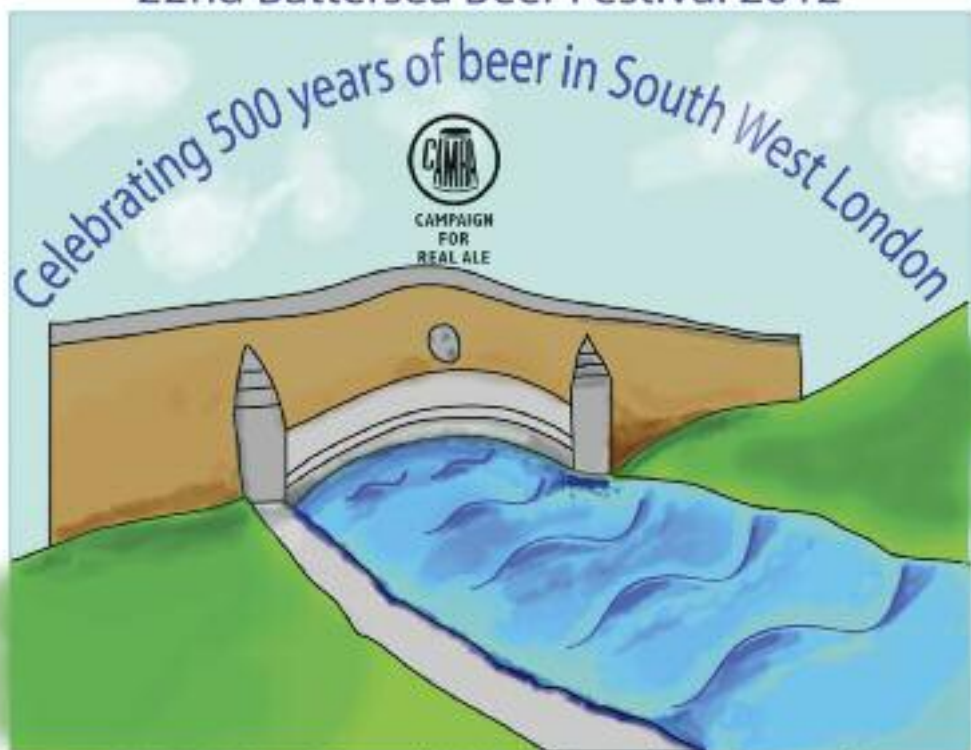


Admission free Wednesday & Thursday lunchtimes, £3.50 at other times,
£2.50 for CAMRA members. Last admission 10pm
For more details see www.camranorthlondon.org.uk

SELECTION OF IMPORTED BEERS • FOOD ALL SESSIONS

Organisers reserve the right to refuse admission

22nd Battersea Beer Festival 2012



CAMRA – South West London Branch

**Wednesday 8th ~ Friday 10th
February 2012
Open 12 noon ~ 11pm**

**Grand Hall, BAC, Lavender Hill, SW11 5TN
10 minute walk from Clapham Junction Station**



**Festival glasses
sponsored by
Sambrook's Brewery**

**Over 150 Real Ales
plus ciders & perries, foreign
beer, food, games & more**



batterseabeerfestival.org.uk

**Admission £4 (£3 before 5pm Wed.)
£1 discount for CAMRA members at all times**
(Admission is at the discretion of BAC and CAMRA South West London)

Latest News: batterseabeerfestival.org.uk, [Facebook.com/CAMRASwl](https://www.facebook.com/CAMRASwl) or @CAMRASwl

FEATURING
INTERNATIONAL

A tall glass of dark red ale with a thick head of foam, set against a green background with decorative elements. The glass is the central focus, filled with a rich, dark red liquid. Above the glass, a string of colorful bunting flags hangs across the top. The background is a solid green color, decorated with stylized, light green floral and leaf patterns. The text 'THE WORLD'S BIGGEST REAL ALE FESTIVAL' is printed in large, bold, white capital letters across the center of the glass. In the top right corner, a black banner with white text reads 'FEATURING INTERNATIONAL'.

THE WORLD'S BIGGEST REAL ALE FESTIVAL

FEATURING
SPECIAL ALES

wetherspoon

THE WORLD'S BIGGEST REAL ALE FESTIVAL

WED 14 MARCH – SUN 1 APRIL

FEATURING ALES FROM
AMERICA, BELGIUM, NORWAY,
RUSSIA AND SOUTH AFRICA



45 REAL ALES AND 10 CIDERS,
FROM THE UK

BEERS BREWED EXCLUSIVELY FOR J D WETHERSPOON
SPECIALITY, SEASONAL AND FRUIT BEERS


Vote for your favourite festival ales at
www.jdwetherspoon.co.uk



SUPPORTED BY



drinkaware.co.uk

Lloyds  Bar

wetherspoon

The Star

17 Church Street, Godalming, Surrey Tel: 01483 417717



*You've probably wondered
where we've gone?
Well we're just down here
in Godalming*

CAMRA Good Beer Guide 2008, 2009, 2010, 2011, 2012

CAMRA Surrey & Sussex Cider Pub of the Year 2008

www.thestargodalming.co.uk

Winter is the time for comfort,
for good food and warmth,
for the touch of a friendly hand
and for a talk beside the fire:
it is the time for ale



IMPORTED BY TWICKENHAM

Twickenham Fine Ales, Edwin Road, Twickenham TW2 8EP
Telephone 020 8941 1105 Mobile 07879 517561

Local sales (South of London) first-class only, you'll be back here first time round

The Old Fountain

3 Baldwin Street
London EC1V 9NU
Tel 020 7253 2970

NEW!
cider pump
installed

**A pub since 1700 and GBG-listed
for the last 7 years.**

Fuller's London Pride plus 7 different ales rotating
and changing daily. Favourite guests include brews
from Dark Star, Red Squirrel and Crouch Vale.

See website for current guest ales.

Great hot specials between 12noon and 2.30pm
lunchtimes and a different early evening menu.
Terrific choice of hot and cold sandwiches.

Dartboard available for evening matches.

Check out our website www.oldfountain.co.uk

East London and City CAMRA Pub of the Year 2011

'Delightful old free house' GBG 2011

The Charles Dickens
FREE HOUSE - BAR & RESTAURANT

**'A GENUINE FREE HOUSE SERVING
AN EVER CHANGING SELECTION
OF THE FINEST REAL ALES
FROM ACROSS THE UK'**

**EVERY WEDNESDAY
QUIZ NIGHT**

OPEN WEEKDAYS FROM 12 - 11PM.
SUNDAY 12 - 6PM SERVING SUNDAY ROAST
FRESHLY COOKED WITH ALL THE TRIMMINGS.



160 UNION STREET, LONDON SE1 0LH
TELEPHONE 020 7404 3744
WWW.THECHARLESDICKENS.CO.UK

Kernel, a brewery that came from cheese!

The Kernel Brewery was set up by Evin O'Riordain in December 2009 but the idea formed some time before that. During a visit of the London Tasting Panel, we found out a little more of the history behind this developing brewery.

Five years ago, Evin worked for Neal's Dairy in London and used to drink real ale in the Market Porter and Wheatsheaf in Borough. Evin thought that there wasn't the same attention to beer at that time as there was to wine, commenting that, *"The beers rotated so fast that it didn't allow the good ones to shine through. You would find one you liked but never saw it again"*.

Things changed for Evin when he was asked by Neal's to open a shop in USA. There, he found the attitude to beer by craft brewers and the bars quite different. He was taken out in the evening to try some of the best bars and beers by locals. Said Evin *"They were very enthusiastic (if a bit loud and showy at times); they were interested in the heritage and how a particular beer tastes. Quite different from the approach in Britain,"* and that was it; Evin was hooked!

When he came back to London, Evin decided to start a brewery, but Evin is also a business man. He considered how he could keep his overheads

down while he was setting up and chose to move into premises underneath the arches near Borough, sharing with three other businesses. Then, with the help of friends, Evin started brewing. The first three batches they drunk themselves before feeling confident to launch the beer onto the market.

Their main goal is good quality, bottled conditioned beer, although they have done collaborative draught brews with some other brewers. All of the bottles are hand filled; each label is hand printed and then the bottle is hand labelled by the four full time staff. Currently they brew about three times a week in their four barrel plant. They have six fermenters, each of which has a name. There is a square one called Bob; a 'space ship' one called Ted and four round ones named after Beckett's plays: Charl, Magda, Vlardinir and Estragon.

About 40% of the beer produced is India Pale Ale, 40% Pale Ale and the rest, experimental. The basic malt used is Munton's Maris Otter Pale but the hops vary according to what is available and what they like but the bias is towards American and New Zealand hops. They even tried Japanese hops but didn't like the flavour. The main brew uses full leaf hops but the dry hopping is with pellets. The yeast varies according to the brew; for porters and stouts they use a London yeast; with the Pale Ale, it is an American one.

The beer is kept for 3-4 weeks to condition before sending out; sometimes longer with the darker beers. Outlets include restaurants (with small 330ml bottles) and specialist off licences. But, of course, you can pop down to Borough at the weekends to purchase the beer directly.

Kernel Brewery goes from strength to strength with Evin recently being awarded the Brewer of the Year by the British Beer of Beer Writers. Another brewery that London can be proud of; just try some!

Visit <http://thekernelbrewery.com>

Christine Cryne



SAMBROOK'S CELEBRATE JOHN YOUNG AWARD

The John Young Memorial Award is given annually by the London branches of the Campaign for Real Ale (CAMRA) for service to real ale in the London area. The 2011 recipients were Duncan Sambrook and David Welsh from Sambrook's Brewery.

The award was appropriately presented by Torquil Sligo-Young, a Young's board member and the



nephew of the late John Young, in the John Young Room at the Old Sergeant, 104 Garratt Lane, Wandsworth on 24 November.

The party then enjoyed some excellent Sambrook's ales and a fine buffet provided by the pub's licensees, Lee and Keris. Much of the food included Sambrook's beers in the ingredients.

Branch diaries

Welcome to our regular details of London CAMRA contacts and events. This is where branches can say what is happening in their areas that might be of interest to drinkers across London. Events for February and March are listed below. Meetings and socials are open to all - everyone is welcome to come along.

LONDON REGIONAL EVENTS

March - Wed 28 (8pm) London AGM and Liaison Committee (Regional co-ordination meeting for London Branches). Royal Oak, Tabard St, SE1. *Secretary: geoff@coherent-tech.co.uk*

LONDON PUBS GROUP

Chair: Jane Jephcote, jane.jephcote@googlemail.com, 020 7720 6327 or 07813 739856

February - Sat 25 Daytime Crawl of Ealing and Brentford: (12 noon) Drayton Court Hotel, 2 The Avenue, West Ealing W13; (1.45) Forester, 2 Leighton Road, W13; (2.45) Ealing Park Tavern, 222 South Ealing Road, W5; (4pm) Waterman's Arms, 1 Ferry Lane, Brentford TW8; (4.30) Brewery Tap, 47 Catherine Wheel Road, TW8; (5.15) Magpie & Crown, 128 High Street, TW8; (6.30) Express Tavern, 56 Kew Bridge Road, TW8.

March - Wed 14 (7.15 for 7.30) Mtg. Royal Oak, Tabard St, SE1 (upstairs). All branches and members interested in pub research and preservation welcome.

Website: www.londonpubsgroup.org.uk

YOUNG MEMBERS GROUP

London co-ordinator Matthew Black, 07786 262798, youngmembers@selcamra.org.uk

February - Sat 18 (1pm) Trip to Kernel Brewery, 98 Druid Street, SE1. Followed by (3pm) Dean Swift, 32 Lafone St; (4pm) Draft House Tower Bridge, 206-208 Tower Bridge Road (both SE1).

March - Mon 12 Chancery Lane crawl: (7pm) Old Bank of England, 194 Fleet St, EC2; (8pm) Knights Templar, 95 Chancery Lane, WC2; (9pm) Cittie of York, 22 High Holborn, WC1; (10pm) Penderel's Oak, 283-288 High Holborn, WC1.

Email group: http://groups.google.com/group/london-camra-ym

BEER AND CIDER FESTIVALS

February - Wed 8-Fri 10 (12 noon-11pm daily) Battersea Beer Festival. Grand Hall Entrance, BAC, Lavender Hill, SW11. See ad on p.29. **Fri 24-Sun 26** Red Lion Beer Festival. 92-94 Linkfield Road Isleworth, Middlesex TW7. See ad on p.19.

March - Thu 1-Fri 2 Piglet 14th Beer Festival (5-11pm daily). Leyton Orient Supporters' Club, Oliver Rd, E10. See ad on p.26. **Fri 2-Mon 5** Grape & Grain Beer Festival. Anerley Hill, SE19. See ad on p.18. **Wed 7-Fri 9** London Drinker Beer Festival. Camden Centre, Bidborough St, London WC1H. See ad on p.30. **Thu 22-Mon 26** Bricklayer's Arms Yorkshire Beer Festival (1pm-11pm daily). 32 Waterman Street, Putney SW15. See ad on p.11. **Thu 29-Sat 31** Wandsworth Common Beer Festival (1pm-11pm daily). Le Gotheque, Royal Victoria Patriotic Bldg John Archer Way, SW18. See ad on p.7.

BEXLEY

Rob Archer, camr@rcher.org.uk, contacts@camrabexleybranch.org.uk
February - Wed 8 (8.30) Branch mtg. Prince of Wales, 13a Woolwich Rd, Belvedere DA17. - **Wed 22 (8.30)** GBG selct mtg. Crayford Arms, 37 Crayford High Street, DA1. - **Wed 29** Sidcup soc: meet (8.30) Portrait, 7 Main Road, DA14, then Tailor's Chalk and Alma.
March - Sat 10 (11.30) Kent regional mtg. Crayford Arms (see above). - **Wed 14 (8.30)** Branch mtg. New Cross Turnpike, 55 Bellegrave Rd, Welling DA16. - **Wed 21** Bexleyheath soc: meet (8pm) Golden Lion, 258 Broadway, DA6 then Volunteer and King's Arms.
Website: www.camrabexleybranch.org.uk

BROMLEY

Chair: Colin Brand, 020 8249 0189 or 07712 357873, cbrand@aol.com.
February - Thu 2 (8pm) Cttee mtg. Rising Sun, 166 Upper Elmers End Rd, BR3. - **Thu 9 (8pm)** Social. Bricklayers Arms, 141 Masons Hill, BR2. - **Tue 21** Social: (8pm) Woodman, 50 High St, Farnborough then (9.30) Change of Horses, 87 High St (both BR6).
March - Thu 1 (8pm) Cttee mtg. Queens Head, 25 High St, Downe BR6. - **Sun 4 (12 noon)** Grape & Grain Beer Fest (see *Festivals section*). - **Sat 10 (12 noon)** Social. Sovereign of the Seas, 109 Queensway, Petts Wood BR5. - **Fri 16** S. Penge crawl: (7.30) Kent House Tavern, Thesiger Rd; (8.30) Goldsmith's Arms, 3 Croydon Rd; (9.30) Maple Tree, 52 Maple Rd (all SE20) - **Mon 26 (8pm)** Social. Barrel & Horn,

204 High St, Bromley BR1.

Website: www.bromleycamra.org.uk

CROYDON & SUTTON

Peter McGill, 07831 561296, pete_mcgill@hotmail.com

February - Thu 2 (8.30) Cheim social: (8.30) Prince of Wales, 28 Malden Rd; (9.30) Claret Wine Bar, 33 The Broadway (both SM3). - **Wed 15 (8pm - note early start)** Good Beer Guide selection mtg. Half & Half, South End, High St, Croydon CR0. - **Wed 22** Crystal Palace social: (8.15) Grape & Grain, Anerley Hill; Sparrowhawk, 2 Westow Hill; (10pm) Postal Order, 33 Westow St (all SE19). - **Tue 28 (8.30)** Branch mtg. Dog & Bull, 24 Surrey Street, Croydon CR0.
March - Sun 4 (12 noon) Joint social with Bromley branch. Grape & Grain (see *Festivals section*). - **Tue 13 (8.30)** Social. Claret Free House, 5a Bingham Cnr, Lower Addiscombe Rd, Addiscombe CR0. - **Wed 21** Wallington 2-pub social: (8.30) Melbourne, 89 Manor Rd; (9.30) Whispering Moon, 25 Ross Parade (both SM6). - **Thu 29 (8.30)** Branch mtg & London Drinker pickup. Windsor Castle (Cottage Room), 378 Carshalton Rd Carshalton SM5.
Website: www.croydoncamra.org.uk

EAST LONDON & CITY

John Pardoe, 07757 725664, elacbranch@yahoo.co.uk

February - Thu 2 (8pm) GBG selct mtg. Ye Olde Rose & Crown, 53-55 Hoe St, E17. - **Tue 14** EC2 crawl: (8pm) Red Lion, 1 Eldon St, EC2M; (8.30) Fleetwood, 36 Wileston St, EC2A; Flying Horse, 52 Wilson St, EC2A; (9.45) Fox, 28 Paul St, EC2A; (10.15) Princess, 76 Paul St, EC2A.

March - Thu 1-Fri 2 (8pm) Piglet Beer Festival (see *Festivals section*). - **Tue 13 (8pm)** Branch mtg. Black Lion 59-61 High St, E13. - **Tue 20** E15 crawl: (7.30) Goldengrove, 146-148 The Grove; (8.15) Queen's Head, 5-7 West Ham Lane, E15; Edward VII, 47 The Broadway; Cow, Westfield Shopping Centre, E20; Tap East, Westfield Shopping Centre, E20.
Website: www.pigsear.org.uk

ENFIELD & BARNET

Brian Willis, 020 8440 4542 (H), branchcontact@camraenfieldandbarnet.org.uk, branch mobile 07757 710008 at event

February - Wed 1 (8.30) Inky memorial soc. Railway Bell, 13 East Barnet Road, New Barnet EN4. - **Tue 7** (meet 8.30) 2-pub Ponders End social. Goat, 250 High Street; Picture Palace, Hertford/Lincoln Rd junc. (both EN3). - **Thu 16 (8.30)** 2-pub Whetstone social: York Arms, 310 Oakleigh Rd North; Cavalier, 67 Russell Lane (both N20). - **Wed 22 (8pm)** 2013 GBG final selct mtg. Old Mitre, 58 High Street, Barnet EN5.

March - Thu 1 (from 6pm) Soc at Piglet BF (see *Festivals section*). - **Wed 14 (8.30)** JDW beer fest soc. Alfred Herring, 316-322 Green Lanes, Palmers Green N13. - **Tue 20 (from 8pm)** Soc with Cabbage Patch Stompers. Ponders End Allotments, 82A Church Road, Ponders End EN3. CAMRA card only. - **Thu 29 (8.30)** London Drinker pickup. New Crown, 80-84 Chase Side, Southgate N14.
Website: www.camraenfieldandbarnet.org.uk

KINGSTON & LEATHERHEAD

Clive Taylor, 020 8949 2099, ctaylor2007@freeuk.com

February - Wed 8 (6pm) Soc at Battersea BF (see *Festivals section*). - **Thu 9 (8pm)** Branch AGM. Willoughby Arms (upstairs), Willoughby Rd, Kingston KT2. - **Wed 15** A Molesey Meander: Meet (8pm) Royal Oak, Walton Rd, then to the Europa, Bell and the Albion. - **Thu 23 (8pm)** GBG selct mtg. Willoughby Arms (see above).
March - Tue 6 (8.15) Branch mtg. Kings Tun (upstairs), 153-157 Clarence St, Kingston KT1. - **Thu 15** Leatherhead crawl. Meet (8pm) Royal Oak, 265 Kingston Rd, KT22, then Plough, Penny Black, Running Horses, Dukes Head and Edmund Tilney. - **Thu 22 (8pm)** Joint visit to Raynes Park. Meet (8pm) Cavern, 100 Coombe Lane, SW20, then Raynes Park Tavern, the Rock and Edward Rayne.
Website: www.camrasurrey.org.uk

NORTH LONDON

Social contacts: Stephen Taylor, 07531 006296, stephen.taylor2@selexgalileo.com; John Adams, 07970 150707, jpa1260@gmail.com. Branch chairman: John Cryne, 07802 174861, john.cryne2@googlemail.com

February - Tue 7 (8pm) London Drinker Beer Fest mtg. Old Red Lion, 72 High Holborn, WC1. - **Tue 14 (8pm)** St Valentines Day soc. Bree Louise, 69 Cobourg St, NW1. - **Tue 21 (8pm)** Shrove Tuesday soc. North Nineteen, 194 Sussex Wy, N19. - **Tue 28** West Bloomsbury

WC1 soc: (7.30) Museum Tavern, 49 Gt Russell St; (8.15) Plough, 27 Museum St; (9pm) Marlborough Arms, 36 Torrington Pl; (10pm) Jeremy Bentham, 31 University St.

March - Tue 6 London Drinker BF workers' soc: (6pm) McGlynns, 1 Whidbourne St, WC1; (8pm) Harrisons, 28 Harrison St, WC1; (8.45) Lucas Arms, 245a Grays Inn Rd, WC1; (9.30) King Charles I, 55 Northdown St, N1. - **Tue 13** Marylebone NW1 social: (7.30) Sports Bar & Grill, Marylebone Stn; (8.15) Victoria & Albert, Marylebone Stn; (9pm) Allsop Arms, 137 Gloucester Pl, (9.45) Volunteer, 245 Baker St, (10.30) Metropolitan, Baker St Stn. - **Sat 17** (12 noon) Six Nations finals and St Patrick's Day soc. Bree Louche, 69 Cobourg St, NW1. - **Tue 20** Angel N1 and Wetherspoon beer fest soc: (7.30) Castle, 54 Pentonville Rd; (8.15) Glass Works, N1 Centre, Parkfield St; (9pm) York, 82 Islington High St; (10pm) Angel, 3 Islington High St. - **Tue 27** (8pm) Branch mtg. Wetherspoons, O2 Centre, 255 Finchley Rd, NW3.

Website: www.camranorthlondon.org.uk

RICHMOND & HOUNSLOW

Brian Kirton, 020 8384 7284 (H), brian.kirton@blueyonder.co.uk

February - Wed 1 (8pm) Social. Botanist, 3-5 Kew Green, Kew TW9. - **Thu 23** (8pm) Branch business mtg. General Roy, Poplar Way, Feltham TW13.

March - Wed 7 Richmond crawl: (7.45) Red Cow, 59 Sheen Rd; (8.30) Angel & Crown, 5 Church St; (9pm) Cricketers, 24 The Green; (9.30) Prince's Head, 28 The Green; (10pm) White Cross, Water Lane; (10.30) Old Ship, 3 King St (all TW9). - **Thu 15** (8pm) Business mtg. Jolly Gardeners, 36 Lower Richmond Rd, Mortlake SW14.

Website: www.rhcamra.org.uk

SOUTH EAST LONDON

Neil Pettigrew, 07751 898310 (M) evenings or weekends only, branch.contact@selcamra.org.uk

February - Mon 6 (8pm) Cttee mtg & soc. All Inn One, 53 Perry Vale, SE23. - **Wed 15** Charlton crawl: (7.30) Anchor and Hope, 2 Riverside Walk; (8.15) Rose of Denmark, 296 Woolwich Rd; (9pm) Bugle Horn, 6 The Village; (9.45) White Swan, 22 The Village (all SE7). - **Mon 20** (8pm) GBG select & soc. Ship (upstairs), 68 Borough Rd, SE1. - **Wed 29** Tower Bridge crawl: (7.30) Bridge House, 218 Tower Bridge Rd; (8.15) Draft House, 206-208 Tower Bridge Rd; (9pm) Anchor Tap, 20A Horselydown Rd; (9.45) Pommeler's Rest, 196-198 Tower Bridge Rd (all SE1).

March - Sun 4 (12 noon) Grape & Grain Beer fest & soc with Bromley Branch (see Festivals section). - **Wed 7** (8pm) Cttee mtg & soc. Ship (upstairs, see above). - **Mon 12** (8pm) Social. Lord Northbrook, 116 Burnt Ash Rd, SE12. - **Wed 21** SE1 Southwark crawl: (7.30) Woolpack, 98 Bermondsey St; (8.15) Leather Exchange, 15 Leathermarket St; (9pm) Simon the Tanner, 231 Long La; (9.45) Marigold, 244 Bermondsey St. - **Mon 26** SE23 Forest Hill crawl: (8pm) Capitol, London Rd; (8.45) Dartmouth Arms, 7 Dartmouth Rd; (9.30) Sylvan Post, 24-28 Dartmouth Road.

Website: www.selcamra.org.uk

SOUTH-WEST ESSEX

Alan Barker, suwestex@essex-camra.org.uk, 07711 971957 (M) evenings or weekends only.

Bookings for minibus trips (+ all brewery trips) to Graham Platt: 020 8220 0215 (H)

February - Wed 1 (8pm), Out-of-area soc. 13th Chelmsford Winter Beer Fest, Triangle Club, Duke St (nr Chelmsford rail stn), CM1. - **Fri 3** (1.30) Out-of-area soc. 19th White Cliffs Beer Fest, Maison Dieu (Town Hall), Biggin St, Dover CT16. By 'Javelin' Train at 11.19 (or 12.19) from Stratford Int in 61 mins; take DLR from West Ham / Stratford to Stratford Int. - **Thu 9** (8.30), Social. Ye Olde Green Dragon, 112 Shenfield Rd, Shenfield CM15. - **Mon 13** (8.30) Social. Bell, High Rd, Hordon-on-the-Hill SS17. - **Wed 22** (8.30) GBG & PotY (London Area), plus CBOB select mtg. Eva Hart, 1128 High Rd, Chadwell Heath RM6. - **Sat 25** (11.30), Out-of-area soc. 3rd Chappel Winter Beer Fest, East Anglian Rly Museum, Chappel & Wakes Colne, CO6. Admission by prepaid ticket only - Book at www.earm.co.uk/winter or 01206 242524 between 10am & 4pm daily. - **Tue 28** (8.30) GBG & PotY (Essex Area), plus CBOB select mtg. White Hart, Kings Walk/Argent St, Grays RM17.

March - Wed 7 (7.30), Out-of-area soc. 28th London Drinker Beer Fest (see Festivals section). - **Thu 15** (8.30) Branch AGM. White Hart (see above). - **Wed 21** (8.30) Social. JJ Moon's, 48/52 High St, Hornchurch RM12. - **Tue 27** (8.30) Social. Colley Rowe Inn, 54/56 Collier Row Rd, Collier Row RM5.

Website: essex-camra.org.uk/suwestex

SOUTH-WEST LONDON

Mark Bravery, 020 8540 9183 (H), 07969 807890 (M), markbravery@blueyonder.co.uk

February - Wed 1 (Noon) Battersea BF publicity crawl. Meet (7pm) Rose & Crown, 2 The Polygon, Old Town, Clapham SW4. - **Wed 15** (7.30) Cttee mtg. Prince of Wales, 2 Hartford Rd, Wimbeldon SW19. - **Sun 26** (12.15) GBG 2013 select mtg. Sultan, 78 Norman Rd, S Wimbeldon SW19. - **Wed 29** Battersea Beer Fest wash-up mtg. Priory Arms (upstairs), 83 Lansdowne Way, S Lambeth SW8.

March - Wed 21 Crawl of St Johns Hill (SJH), Battersea SW11. Meet (7.15) Falcon, 2 SJH; then 8.00 Plough, 89 SJH; 8.45 Powderkeg Diplomacy, 147 SJH; 9.30 Beehive, 197 SJH; 10.15 Roundhouse, 2 Wandsworth Common Northside SW18.

Website: www.sulcamra.org.uk

WATFORD & DISTRICT

Andrew Vaughan, 01923 230104 (H) 07854 988152 (M)

February - Thu 2 (8.30) Quiz. Southern Cross, Langley Road, Watford WD17. - **Thu 16** Croxley Green soc: (8.30) Coach & Horses, The Green; (9pm) Croxley Guild of Sports, The Green; (9.45) Artichoke, The Green; (10.15) Sportsman, Scots Hill (all WD3). - **Mon 27** (8pm) Branch mtg. West Herts Sports Club, Park Avenue, Watford WD18.

March - Thu 1 Watford Heath soc: (8.30) Royal Oak, Watford Heath; (9.15) Load of Hay, Pinner Road; (10pm) Villiers Arms, Villiers Road, Oxhey (all WD19). - **Wed 7** London Drinker BF (see Festivals section). Meet at Products Stand every hour on the hour from 6pm. - **Thu 15** Annual Breweriana Auction. West Herts Sports Club (see above). 7pm viewing for 8pm start. - **Mon 26** (8pm) Branch AGM. Estcourt Arms, St John's Road, Watford WD17.

Website: www.watfordcamra.org.uk

WEST LONDON

Paul Charlton 07835 927357, paul@paulcw4.plus.com; Social secretary Alasdair Boyd: 020 7930 9871 x 143 (2.30-3.30 and 6-9.30pm Mon-Fri), banqueting@nlc.org.uk, fax 020 7839 4768

February - Tue 7 W8 soc: (7.30) Uxbridge Arms, 13 Uxbridge St; (9pm) Churchill Arms, 119 Kensington Church St. - **Tue 14** (7pm for 7.30) Branch mtg. Duchess of Cambridge, 320 Goldhawk Rd, W6. Bring CAMRA card for discount. - **Thu 23** WC2 Strand soc: (7.30) George, 213 Strand; (8.30) Devereux, 20 Devereux Ct; (9.30) Cheshire Cheese, 5 Little Essex St. - **Wed 29** SW1 soc: (7.30) Cask & Glass, 39 Palace St; (8.30) Buckingham Arms, 62 Petty France; (9.30) Old Monk Exchange, Strutton Ground, 61-71 Victoria St.

March - Mon 5 Marylebone W1 soc: (7.30) Harcourt Arms, 32 Harcourt St; (9pm) Duke of Wellington, 94a Crawford St. - **Tue 13** (7pm for 7.30) Branch mtg. Star Tavern, 6 Belgrave Mews W, off Halkin Pl, SW1. - **Wed 21** W2 soc: (7.30) Sawyers Arms, 8/9 London St; (8.30) Dickens Tavern, 25 London St; (9.30) Fountains Abbey, 109 Praed St. - **Tue 27** W8 soc: (7.30) Prince of Wales, 8 Kensington Church St; 9pm Elephant & Castle, 40-42 Holland St.

Website: www.westlondon-camra.org.uk

WEST MIDDLESEX

John Bush, 07739 105336, info@westmiddx-camra.org.uk

February - Thu 9 Battersea Soc (see Festivals section). Meet by product stand, on hr 6 and 7pm. - **Fri 17** Uxbridge UB10 crawl: (8pm) Metropolitan, 9 Windsor St; (9pm) Queens Head, 54 Windsor St; (9.45) Three Tuns, 24 High St. - **Wed 22** Harefield UB9 crawl: (8pm) Kings Arms, 6 Park La; (8.30) Old Orchard, Jacks La, off Park La; (9.30) Harefield, 41 High St. - **Mon 27** (8pm) GBG final selection mtg. Kings Arms, 55 The Grove, Ealing W5.

March - Thu 8 Soc at London Drinker BF (see Festivals section). Meet on hr (6/7pm) by product stand. - **Fri 16** Wetherspoons mini crawl: (7.30) Central Bar, Unit 1 West 12 Shopping Centre, Shepherds Bush Green W12; (8.45) Red Lion & Pineapple, 281 High St, W3; (9.45) Sir Michael Balcon, 46-47 The Mall, W5. - **Sat 24** Wetherspoons Met Line day crawl: (1pm) Good Yarn, 132 High St, Uxbridge UB8; (2pm) Tichenham Inn, 11 Swakeleys Road, Ickenham UB10; (3pm) JJ Moons, 12 Victoria Road, HA4; (4pm) The Village Inn, 402-408 Rayners Lane, HA5; (5pm) Moon on the Hill, 373-375 Station Road, HA1. - **Wed 28** (8pm) Branch mtg inc. PotY/CotY. Load of Hay, 33 Villiers St, UB8.

Website: www.westmiddx-camra.org.uk

Electronic copy deadline for the April/May edition: Wednesday 14 March. Please send entries to londonrinker@daviessolutions.co.uk.

Bokbier is the traditional Dutch winter brew, directly equivalent to our own old ales and winter warmers. They are a little stronger and more malty than the everyday beers, and are only on the market (officially) from the first Monday in October until very early in the new year. However, they are so popular that any licensee worth his salt will have his cellar stacked high at the beginning of the year. If we are lucky, we might see one or two in London this winter.

During late October 2011, two separate consumer organisations made their choice of the best bokbiers in the Netherlands: 'Het lekkerste Bockbier van Nederland', in the proeflokaal (loosely, brewery tap,) of Brouwerij de Prael and a week later by a team of tasters at the PINT Bokbier Festival, both in Amsterdam. PINT is the Dutch national beer consumers' advocate and member of the European Beer Consumers Union (EBCU) and thus the equivalent of CAMRA in UK.

Lekkerstebockbier results:

Standard Bockbier

1. Texelse Bock (top fermented; sedimented; dark red/brown colour)	7%
2. Amstel Bock	7%
3. Jopen Viergranen Bock	6.5%
4. Lindeboom Bockbier	6.5%
5. Het Goeye Goet Herfstbock (from the Openluchtmuseum Arnhem) (A museum with its own brewery? That's my idea of education!)	
6. De Leckere Rode Toren	6.5%

Heavy / strong Bockbier

1. Jopen Johannierter (dubbelbok)	9%
2. Schiedamse Dubbelbock	8%
3. SNAB Ezelenbock	7.5% (Double bock)
<i>Technical information, from the brewery's own web site:</i>	
<i>Unpasteurised and bottle conditioned;</i>	
<i>Density 16.9 ° Plato;</i>	
<i>Residual sugars: quite high;</i>	
<i>Colour 90 EBC (red-brown);</i>	
<i>Bitterness 32 EBU.</i>	
4. Emelisse Imperial Dobbellock	11.3%
5. Christoffel XXV	10.25%
<i>Their twenty-fifth anniversary brew.</i>	
6. Brand Dubbelbock	7.5%
<i>Top fermented; colour: deep red-brown</i>	

PINT Bokbier Festival winners:

Selected at the PINT Bokbier Festival in Amsterdam, 29 October 2011, from

approximately 80 contenders. From:
<http://bier.blog.nl/biersoorten/bokbier/2011/10/29/wie-wint-de-titel-beste-bockbier-van-nederland>

Best Bok

1. Texelse Bock* (top fermented; sedimented; dark red/brown colour)
 2. Amstel Bock*
 3. De Leckere Rode Toren
- * These were numbers 1 and 2 last year, too, and the Texelse beer was number one in 2009.

Best Dubbelbock

1. Brand Dubbelbock 7.5%
 2. SNAB IJsbok 9% (after freezing)
- Technical Data:*
Beer Type: Eisbock.
Commodities: Water, Pils, Munich, Crystal and Chocolate Malt, Hersbrucker Hallertau hops and yeast.
Not pasteurized, and with secondary fermentation in the bottle.
Stam Wort 16.9 ° Plato. Alcohol circa 9.0% (after freezing).
Residual sugars Much. Colour circa EBC 100 (red-brown).
Bitterness Ca. 32 EBU.
3. Jopen Johannierter 9%
- Type: Dubbelbok
 Colour: dark brown
 Taste: not sweet, but strong and full-bodied with a roasted malt character.
 Suggested food matching: casseroles; duck.

Best Speciaalbock

1. Heller Brau Schlenkerla Urbock 6.5%
2. Weißenstephan Vitus 7.7%
3. Mommeriete Rookbock 6.7%

Richard Larkin

NOTES

(1) The usual Dutch spelling was 'bok' or 'bokbier'; the German, 'bock' or 'bockbier'. Now both spellings seem to be current in the Netherlands. I have used the spelling which the brewery chooses.

(2) The Dutch 'dubbel' and German 'doppel' are equivalent, originally meaning that the beer used double the amount of malt, compared to the run of the mill beers. It did not, and does not mean twice the strength.

(3) Comments in italics have been taken from the brewery's web site, and translated.

WHAT'LL IT BE THEN?

A PINT OF THE USUAL, OR A
LIFE-CHANGING EXPERIENCE?

Allow us to introduce you to an old friend: Fuller's ESB, three times Champion Beer of Britain, seen here in its smart new livery. Don't worry, the beer's just the same as ever. But if it's been a while, maybe it's time you reacquainted yourself with its uniquely rich, deliciously fruity flavour and long, satisfying finish. It could well be the happiest reunion of your life.



ESB. THE CHAMPION ALE.

London LocAle Pubs

The following pubs have been accredited under the London CAMRA LocAle scheme, as at 11 January 2012. Each of them serves at least one good beer that has been brewed no more than 30 miles away. Let the local CAMRA branch please know of other pubs that deserve to be enrolled in the scheme.

Admiral Mann 9 Hargrave Pl, off Brecknock Rd N7 0BP

Albion in Goldsmith's Row 94 Goldsmith's Row, Haggerston E2 8QY

Alma 59 Newington Green Rd N1 4QU

Armoury 14 Armoury Way, Wandsworth SW18 1EZ

Barnsbury 209-211 Liverpool Rd N1 1LX

Black Heart 3 Greenland Pl, Camden NW1 0AP

Boaters Canbury Gardens, Kingston KT2 5AU

Bree Louise Cobourg St, Euston NW1 2HH

Bricklayer's Arms 32 Waterman St, Putney SW15 1DD

Canbury Arms 49 Canbury Park Rd, Kingston KT2 6LQ

Cap in Hand 174 Hook Rise North, Surbiton KT6 5DE

Cask Pub & Kitchen 6 Charlwood St, Pimlico SW1V 2EE

Charlotte 38-40 Station Rd, Crayford DA1 3QG

Charlotte Despard 17-19 Archway Rd N19 3TX

Clifton 96 Clifton Hill, St John's Wood NW8 0JT

Coach & Horses 173 Clapham Park Rd SW4 7EX

Coronation Hall 7 St Marks Hill, Surbiton KT6 4LJ

Crayford Arms 38 Crayford High St DA1 4HH

Cross Keys 31 Endell St, Covent Garden WC2H 9EB

Crown & Sceptre 2A Streatham Hill SW2 2AH

Defectors Weld 170 Uxbridge Rd, Hammersmith W12 8AA

Dog & Bell 116 Prince St, Deptford SE8 3JD

Draft House Northcote 94 Northcote Rd, Battersea SW11 6QW

Draft House Westbridge 74-76 Battersea Bridge Rd SW11 3AG

Drum 557-559 Lea Bridge Rd, Leyton E10 7EQ

Duke of Cambridge 30 St Peter's St N1 8JT

Duke of Hamilton 23-25 New End, Hampstead NW3 1JD

Duke of Wellington 119 Balls Pond Rd, Dalston N1 4BL

Eagle Ale House 104 Chatham Rd, Battersea SW11 6HG

Earl Ferrers 22 Ellora Rd, Streatham SW16 6JF

Elm Park Tavern 76 Elm Park,ulse Hill SW2 2UB

Falcon St Johns Hill, Battersea SW11 1RU

Flask 14 Flask Walk, Hampstead NW3 1HE

Florence 133 Dulwich Rd, Herne Hill SE24 0NG

George 17-21 George St, Croydon CR0 1LA

George 213 Strand WC2R 1AP

George 155-159 High St, Wanstead E11 2RL

George Orwell 382 Essex Rd N1 3PF

Gilpins Bell 50-54 Fore St, Upper Edmonton N18 2SS

Grape & Grain Anerley Hill, Crystal Palace SE19 2TF

Green Dragon 58-60 High St, Croydon CR0 1NA

Half & Half 282 High St, Croydon CR0 1NG

Hand & Flower 24 Upper Ham Rd, Ham TW10 5LA

Hand in Hand 7 Crooked Billet, Wimbledon Common SW19 4RQ

Harp 47 Chandos Place, Covent Garden WC2N 4HS

Hermits Cave 28 Camberwell Church St SE5 8QU

Hope 8 West St, Carshalton SM5 2PR

Howl at the Moon 178, Hoxton St N1 5LH

JJ Moons 12 Victoria Rd, Ruislip Manor HA4 0AA

John Baird 122 Fortis Green Rd, Muswell Hill N10 3HN

Jolly Butchers 204 Stoke Newington High St N16 7HU

Junction Tavern 101 Fortess Rd, Kentish Town NW5 1AG

King Charles I 55-57 Northdown St, King's Cross N1 9BL

Kings Arms 40 Albion Rd, Twickenham TW2 6QJ

Kings Arms 25 Roupell Street, Waterloo SE1 8TB

Kings Ford 250-252 Chingford Mount Rd E4 8JL

Kings Tun 153-157 Clarence St, Kingston KT1 1QT

Lamb 73 Brighton Rd, Surbiton KT6 5NF

Lighthouse 441 Battersea Park Rd SW11 4LR



HOLE'S
IPA
BITTER

CAMRA
CAMPAIGN
FOR
REAL ALE

GUINNESS
STOUT

Watford & District

Breweriana Auction

West Herts Sports Club
8 Park Avenue, Watford, WD18 7HP

Thursday 15th March 2012

Viewing from 7pm

WATFORD & DISTRICT
BREWING

Contact baustin@supanet.com for
catalogue and further details

London LocAle Pubs

Lion & Unicorn 42-44 Gaisford St, Kentish Town
NW5 2ED

LOSC Matchroom Stadium, Oliver Rd, Leyton E10 5NF

Magpie & Crown 128 High St, Brentford TW8 8EW

Moon Under Water 84/86 Staines Rd, Hounslow
TW3 3LF

Nags Head 9 Orford Rd, Walthamstow E17 9LP

Nightingale 97 Nightingale La, Balham SW12 8NX

Northcote 2 Northcote Rd, Battersea SW11 1NT

Old Coffee House 49 Beak St, Soho W1 9SF

Olde Mitre, 58 High St, High Barnet EN5 5SJ

Olde Rose & Crown b53-55 Hoe St, Walthamstow
E17 4SA

Old Sergeant 104 Garratt La, Wandsworth SW18 4DJ

Pakenham Arms 1 Pakenham St, Bloomsbury WC1 0LA

Peasant 240 St John St, Clerkenwell EC1V 4PH

Picture Palace Howard Hall, Lincoln Rd, Ponders End
EN3 4AQ

Prince Albert 163 Royal College St, Camden Town
NW1 0SG

Prince of Wales 13a Woolwich Rd, Upper Belvedere
DA17 5EE

Prince of Wales 38 Old Town, Clapham SW4 0LB

Priory Arms 83 Lansdowne Way, Stockwell SW8 2PB

Ravensbury Croydon Rd, Mitcham CR4 4JA

Red Lion 92/94 Linkfield Rd, Isleworth TW7 6QJ

Robin Hood & Little John 78 Lion Rd, Bexleyheath
DA6 8PF

Roundhouse 2 Wandsworth Common North Side
SW18 2SS

Snooty Fox 75 Grosvenor Ave, Canonbury N5 2NN

Speaker 46 Great Peter St, Westminster SW1P 2HA

Star Tavern 6 Belgrave Mews West SW1X 8HT

Sun 4 North St, Carshalton SM5 2HU

Tapping the Admiral 77 Castle Rd, Camden Town
NW1 8SU

Three Compasses 62 High St, Hornsey N8 7NX

Trafalgar 23 High Path, Merton SW19 2JY

Victoria Stakes 1 Muswell Hill N10 3TH

Vine 86 Highgate Rd NW5 1PB

Walnut Tree 857-861 High St, Leytonstone E11 1HH

WFC&SC Waltham Forest Town Hall, Forest Rd,
Walthamstow E17 5JF

White Horse 1-3 Parsons Green SW6 4UL

Wibbas Down Inn 6-12 Gladstone Rd, Wimbledon
SW19 1QT

William IV 816 High Rd, Leyton E10 6AE

Willoughby Arms Willoughby Rd, Kingston KT2 6LN

Willow Walk 25 Wilton Rd, Victoria SW1V 1LW

Woody's 5 Rams Passage, Kingston KT1 1HH



High quality bottled beers from
around the world
For lovers of the fine beer
experience



134 Upper Richmond Road
London SW15 2SP
020 8780 3168

www.thebeerboutique.co.uk

Capital Pubcheck - update 222

The aim of 'Capital Pubcheck' is to share information about the latest happenings on the London pub scene including new pub and bar openings, name changes, acquisitions, closures, notable changes to beer ranges etc.

Information is gathered from a variety of sources including *London Drinker* readers, individual CAMRA members and branch contacts, breweries, pub operators, landlords etc. If you would like to contribute to 'Pubcheck' please send your news to the address below.

The availability of real ales from the new London microbreweries is expanding as new innovative operators embrace them and the major pubcos and breweries reluctantly weaken the tie. A speciality cider house has opened at NW1 Euston, sister to the Euston Tap opposite and the first in London for over four decades. The controversial Scottish brewery BrewDog has opened a pub in NW1, Camden Town, albeit bereft of cask real ale. Fuller's have bought the freeholds of two Enterprise pubs in WC2 Chancery Lane (in the GBG) and SW14 East Sheen. Greene King have transferred a pub in N8, Crouch End, to their 'Realpub' subsidiary, free of tie, with more to follow. We catch up on a Young's acquisition in rural Green Street Green, Orpington and list the latest Young's pubs taking Twickenham beers. Encouragingly one or two pubs have reopened after long term closure where development aspirations have been thwarted by local planning authorities.

The fight continues to save the Wenlock Arms, N1 Hoxton, as other pubs come under threat from an unholy alliance of nimby neighbours and greedy developers, including well respected pubs in SE5 East Dulwich and SW14 Mortlake. The scandal of the conversion of high

street pubs to Sainsbury and Tesco convenience stores, without the need to seek planning permission for change of use to retail, continues unhindered by any sign of Government action to address it.

Cross references to CAMRA's various pub guides covering Greater London are provided to enable easy updating. The numbers in brackets after each entry refer to the page numbers in the following guides: BM - Balham to Morden Pub Guide; BRP - Barnes to Raynes Park Pub Guide; BSM - Brixton, Streatham & Mitcham Pub Guide; CE - Camden & Euston Real Ale Guide; CSL - Clapham & South Lambeth Pub Guide; E - East London & City Beer Guide, 3rd edition; H - Hertfordshire Guide to Real Ale, 2000 edition; HH - Hampstead & Highgate Real Ale Guide; IS - N1 Islington Real Ale Guide; K - Guide to Kent Pubs, 10th edition; 8K - Real Ale Guide to Kent Pubs, 8th edition; KT - Kingston Pub Guide (2KT - second edition); N - North London Beer Guide, 3rd edition; RHP - Richmond, Ham & Petersham Pub Guide; SE - South East London Pub Guide, 4th edition; 3SE - South East London Pub Guide, 3rd edition; SW - South West London Pub Guide, 2nd edition; W - West London Pub Guide, 2nd edition; WB - Wandsworth & Battersea Pub Guide; WC - WC1 and WC2 Real Ale Guide; X - Essex Beer Guide, 9th edition.

If you would like to report changes to pubs or beers, please email capitalpubcheck@hotmail.com or write to Capital Pubcheck, 2 Sandtoft Road, London SE7 7LR. Single copies of Update 220, which could not be printed in the October/November issue of *London Drinker* but was accessible only online at www.londondrinker.org.uk, may be requested from this address - please send A5 SAE.

NEW & REOPENED PUBS & PUBS CONVERTED TO REAL ALE

CENTRAL

EC1, NEW RED LION, 271-273 City Rd. Adnams: Broadside; Sharp: Doom Bar. A theatre/bar. Formerly OFFSIDE, PROGRESS BAR, STICK & WEASEL and originally CITY ARMS. (E24, U165,180,218)

EC2, BALLS BROTHERS, 158 Bishopsgate. No real ale. Long standing chain wine bar, now with keg lagers.

EC2, JAMIES, 155 Bishopsgate. No real ale. Kornicis, ex-Food & Drink Group in 2008. Chain wine bar, now with keg lagers.

WC1, LOUNGE BAR, 267 High Holborn. Reopened as a bar on two floors and renamed HOLBORN HOUSE after about a year as a Japanese restaurant. No real ale. Still Punch owned. Formerly HARLEYS, WARDS OF HOLBORN and originally ROYAL CONNAUGHT. Reinstall on pub database. (W20, U211, U216)

WC2, ANGEL & CROWN, 58 St Martins Lane. Adnams: Bitter; Dark Star: Hophead; Sambrook; Junction. Reopened and sensitively refurbished by small pubco ETM Group, ex-Faucet Inn. (W28, U191,192,201,220)

W1(S), ALPHABET, 61-63 Beak St. No real ale. Acquired by Broken Foot from Alphabet Bars in 2010. Formerly a bar with no draught beer opened in the late '90s, now with keg lager.

EAST

E1, MARKET COFFEE HOUSE (ENGLISH RESTAURANT), 52 Brushfield St. Two varying

Redemption beers. Established as an independent restaurant and coffee shop in 2001 in former commercial premises, a revamp has seen the installation of a bar with two handpumps. Beers will vary and beers from other London micros are planned.

E2, SEBRIGHT ARMS, 31 Coate St. Up to five varying micro-brewed beers mainly from London, including Brodies, Dark Star, London Fields, Sambrook's and Redemption, plus Redchurch in bottles and cask cider. Closed since 2009 but not previously reported, it has been reopened by independent operator Charles Ross following refusal by Tower Hamlets Council of at least two planning applications by the previous owner for demolition and replacement by flats. The cumulative loss of pubs in the area, its colourful past as a cabaret pub and its conservation area status, appear to have influenced the refusal on 'loss of amenity' grounds. At last a positive outcome and an example of what can be achieved by Councils if the will is there. (E84, U131, U194, U204)

NORTH

N1, CANAL 125, 125 Caledonian Rd. Sharp: Doom Bar (straight from the cask) @ £3.95/pint. Formerly BABUSHKA, originally SWAN TAVERN. (N58, U120,168,183)

N1, LADYBIRD, 70 Upper St. No real ale. Independent cocktail/DJ bar with keg lager. Formerly 'Ruby in the Dusk' cocktail bar since c1999.

NORTH WEST

NW1, CIDER TAP, East Lodge, 190 Euston Rd. No real ale but varying real ciders. Termed 'Craft Cider House'

and sister to the Euston Tap (opposite), it opened November 2011 in a Grade II-listed building formerly used as an architects office. Six still ciders, including a mulled cider, straight from containers behind the bar; ten carbonated ciders and perries from taps, and bottled ciders and perries. The 'still' range includes Crossmans, Olivers, Orchard Pig, Sandfords and Swallowfields. Tap ciders include Lilleys, Sandfords and Original Sin from USA. Bottled ciders include some from Normandy. Also Calvados. Small red and green tiled ground floor bar area with spiral staircase leading to small seating area and WCs on first floor. Open 7.30am for breakfast, 11-11 for alcohol Mon-Fri, 1-11 Sat, closed Sundays. A welcome addition to the London pub scene and the first London cider house since the last 'Weston's Cider Store' (in Woodfield Rd, W9), closed in the late '70s. (U221)

NW1, BAR 113, 113 Bayham St. Reopened and renamed **BREW DOG** in December 2011 after almost three years as 'La Sagra' restaurant and latterly 'Fuji Sushi'. No real ale. Operated by the Aberdeenshire-based BrewDog brewery which specialises in strong North American style 'craft beer' in keg and bottle. A row of keg taps dispenses ten BrewDog beers ranging from 5% to 18.2% (except one at 2.8%), together with beers from Europe and the USA including Mikkeller and Stone Brewing. It is understood the beers are dispensed by a mixed CO₂/nitrogen gas pressure system, supplemented by mini-kegs. Prices range from £3.95/pint, £2.95/half and £4.50/third, dependent on strength. An extensive bottled beer list includes bottle-conditioned beers. Decorated in contemporary style: grey with brick bar tiled walls and

low lighting. Small downstairs bar in similar style. Large windows display the BrewDog logo. Food includes pizzas and burgers. BrewDog may be renowned for shameless self-publicity and hype, its slogan being 'beer for punks', but the beers are flavoursome and of good quality. The extraneous gas can be detected in the weaker beers but is less apparent in the stronger ones, as is often the case with North American craft beers. It is nevertheless a pity that BrewDog's excellent cask beers are not being made available on handpump in traditional British style in its flagship London pub. The brewery's apparent view that carbonation improves its draught beers will be familiar to those who can recall the early days of CAMRA in London when, for many years, Fuller's insisted that its gas dispensed 'Porter Lancastrian' system had no adverse effect on its cask beers. Déjà vu! Originally LAUREL TREE. Open 12-11.30 (midnight Fri/Sat, 10.30 Sun). (N169, U156,172,180,205,209)

NW7, ADAM & EVE, Ridgeway. Caledonian: Deuchars IPA, Flying Scotsman; Greene King: Abbot; Hop Back: Summer Lightning; St Austell: Tribute; Thwaites: Wainwright. Reopened December 2010 by the operators of the Prince Albert, NW1. Now S&NPC, ex-Allied (Taylor Walker) via Spirit. (N209, U213)

PINNER (HA5), ASCOTT (THE), 144 Field End Rd, Eastcote. Greene King: IPA, Abbot; guest beer (e.g. Wadworth 6X). Formerly MANOR (W180, U201,210,221)

SOUTH EAST

SE1, LORD NELSON, 243 Union St. Varying guest beer



Friday 20th April, 6pm - 10pm

Saturday 21st April, 12 noon - 4pm & 6pm - 10pm

Verona Drive, Surbiton, Surrey, KT6 7SU (Scout Hall)

Sponsored by



Supported by Kingston & Leatherhead CAMRA

Information at: info@hookbeerfest.org.uk

www.hookbeerfest.org.uk

Follow us on  [@hookbeerfest](https://twitter.com/hookbeerfest)

In aid of Charities including:





**EXCLUSIVE TO NICHOLSON'S
AVAILABLE FROM 3RD MARCH**

THREE MILLS PALE ALE, 3.9% ABV

Brewed by Good Pub Guide's 2012 Brewery of the Year, Nethergate

Dedicated to the memory of



WILLIAM NICHOLSON

FOUNDER OF NICHOLSON'S PUBS

William Nicholson was a Victorian all-rounder – an MP, businessman, and sporting hero. He played first-class cricket, ran the family's distilling business, financed Lord's cricket ground and its famous pavilion, and in 1873 revitalised a collection of characterful alehouses that became known as Nicholson's pubs.

Three Mills Pale Ale is an aromatic blonde ale, and is the first in a series of ales brewed in honour of William Nicholson, to showcase his legacy and demonstrate his passion for craftsmanship.

The Three Mills represent working mills on the River Lea in the East End of London, which William Nicholson purchased in 1872 to increase production for his gin distilling company J&W Nicholson & Co. Distilling ceased in 1941 during rationing shortages of World War II but the Nicholson's pubs continue to go from strength to strength.

This Ale is brewed by Nethergate, Good Pub Guide's 2012 Brewery of the Year.

WWW.NICHOLSONSPUBS.CO.UK



MAKE A NEW DISCOVERY
WITH
OUR 25 ALES
THIS SPRING

AVAILABLE FROM MARCH

Take a glimpse of 5 of our favourite ales from our spring collection



WINDSOR AND ETON
KNIGHT OF
THE GARTER



KIRKSTALL BREWERY
KIRKSTALL
PALE ALE



BED SQUIRREL
HOP FEST



OTLEY
THAI BO



MOOR BEER COMPANY
SOMERLAND GOLD



SCAN YOUR SMARTPHONE OVER THE
CODE TO FOLLOW US ON FACEBOOK

Join us on Facebook and let us know which Cask Ales
you want to see in your local Nicholson's Pub



Capital Pubcheck - update 222

rather hidden on handpump at far end of back bar (e.g. Box Steam Golden Bolt). (SE24, U221)

SE1, SLUG & LETTUCE, 32 Borough High St. Wells: Bombardier (not always available). Now Town & City, ex-Laurel. (U157,197)

SE9, WHITE HART, 2 Eltham High St. Fuller: London Pride; Green King: London Glory: Wye Valley: HPA. (SE88, U214)

SE19, HOLLY BUSH (JACK BEARDS AT THE), 2 Westow Hill. Renamed **SPARROWHAWK** in September 2011. Harvey; Sussex Best Bitter; Sambrook: Wandle. Refurbished and now food led. Formerly **HOLLY BUSH**. (SE179, U219)

SE27, HORNS TAVERN, 40 Knights Hill. Wells: Bombardier. (SE228, U211)

SOUTH WEST

SW1(P), GREYHOUND, 13 Cambridge St. Sharp: Doom Bar; Taylor; Landlord; guests (e.g. Caledonian Deuchars IPA, seasonal beer). Reopened after eight years' closure while upper floors were converted to flats. Formerly owned by Allied Breweries and badged 'Friary Meux', it is now independently operated by MSN Taverns and restricted to the ground floor and cellar. Leased from a private landlord. Traditional black and white decor with famous alcohol related quotes on the walls, TV for news, background '60s-'70s music. Food limited to rolls but pie & mash restaurant planned for cellar. Open 11-11 (12-10.30 Sun). A welcome and rare reinstatement of a pub. Note correct address. (SW41, U173, 201)

SW20, FUNKTION, 641 Kingston Rd. Reopened in December and renamed **ROCK RAYNES PARK**, a 'Bar & Dining Room' and one of a small chain. Sambrook: Wandle. Formerly **JUNCTION TAVERN**. (SW125, BRP37, U207, 210, 214,216,220)

WEST

W7, INN ON THE GREEN, 13 Lower Boston Rd. Fuller: London Pride; Sharp; Doom Bar. Reopened Enterprise pub with temporary manager. (W107, U219,221)

W9, CHIPPENHAM, 207 Shirland Rd. Greene King: IPA; Shepherd Neame: Spitfire; guest beer (e.g. Warwickshire Howling Wolf Moustache Beer). (W114, U186,193,197)

W10, PORTOBELLO BRIDGE, 36 Golborne Rd. Reopened and renamed **EARL**. Shepherd Neame: Spitfire. Formerly **GROVE**, **GOLBORNE GROVE** and originally **EARL OF WARWICK**. (W116, U216)

FELTHAM (TW13), AIRMAN, 1 Hanworth Rd. Fuller: London Pride; Greene King: IPA (W135, U219)

HAMPTON WICK (KT1), OLD KINGS HEAD, 1 Hampton Ct Rd. Fuller: London Pride. (W146, U203.204)

HAYES (UB3), FAMOUS GEORGE ORWELL, 10-11 Broadway Parade, Coldharbour Lane. Now simply **GEORGE ORWELL**. Courage; Best Bitter, Directors; Wells: Bombardier. (W160, U214)

HEATHROW AIRPORT (TW6), HUXLEYS (BAR & KITCHEN), Departure level, Terminal 5 Airside. No real

www.TheRiflemanPub.co.uk

Beer Festival

March 16th, 17th and 18th

Walking Distance from Twickenham Stadium,
(FREE ON STREET PARKING)

Traditional Family Run, Backstreet Pub in the
heart of the Twickenham Cross Roads, Near to
Strawberry Hill Station and various Buses.

Twickenham Fine ales always on tap.
Cask Marque.

7 Fourth Cross Road, Twickenham TW2 5EL - 020 8893 3836

A Campaign of Two Halves

Fair deal on beer tax

Save Britain's Pubs



Join CAMRA Today

Complete the Direct Debit form and you will receive 15 months membership for the price of 12 and a fantastic discount on your membership subscription.

Alternatively you can send a cheque payable to CAMRA Ltd with your completed form, visit www.camra.org.uk/joinus or call 01727 867201. All forms should be addressed to Membership Department, CAMRA, 230 Hatfield Road, St Albans, AL1 4LW.

Your Details

Title _____ Surname _____

Forename(s) _____

Date of Birth (dd/mm/yyyy) _____

Address _____

Postcode _____

Email address _____

Tel No(s) _____

Partner's Details (if Joint Membership)

Title _____ Surname _____

Forename(s) _____

Date of Birth (dd/mm/yyyy) _____

Direct Debit Non DD

Single Membership £20 ☐ £22 ☐
(UK & EU)

Joint Membership £26 ☐ £27 ☐
(Partner at the same address)

For Young Member and concessionary rates please visit www.camra.org.uk or call 01727 867201.

I wish to join the Campaign for Real Ale, and agree to abide by the Memorandum and Articles of Association

I enclose a cheque for _____

Signed _____ Date _____

Applications will be processed within 21 days

12/10

**Campaigning for Pub Goers
& Beer Drinkers**

**Enjoying Real Ale
& Pubs**

Join CAMRA today - www.camra.org.uk/joinus



Instruction to your Bank or Building Society to pay by Direct Debit

Please fill in the whole form using a ball point pen and send to:
Campaign for Real Ale Ltd, 230 Hatfield Road, St Albans, Herts AL1 4LW

Name and full postal address of your Bank or Building Society Service User Number

To the Manager Bank or Building Society

Address

Postcode

Branch of Account Holder

Branch Sort Code

Bank or Building Society Account Number

Branch Sort Code

Branch Sort Code

Branch Sort Code

Branch Sort Code

Branch Sort Code

Branch Sort Code

Branch Sort Code

Branch Sort Code



This guarantee should be attached and retained by the payer.

The Direct Debit Guarantee

- The Guarantee is subject to all banks and building societies that accept harmonised or pay to Direct Debit.
- If there is any change to the amount, date or frequency of your Direct Debit The Campaign for Real Ale Ltd will notify you 15 working days in advance of your account being debited, or, in alternative words, if you receive 'The Campaign for Real Ale Ltd is making a payment' confirmation of the amount and date will be given to you at the time of the request.
- If at any time it is made to the person of your Direct Debit by The Campaign for Real Ale Ltd or your bank or building society you are entitled to a full and immediate refund of the amount paid from your bank or building society.
- If you receive a refund you are not entitled to, you must pay it back when The Campaign for Real Ale Ltd asks you to.
- For the details of the Guarantee to the Direct Debit Guarantee your bank or building society. No other conditions may be imposed. Please also notify us.

9 2 6 1 2 9

FOR CAMRA OFFICIAL USE ONLY

This is not part of the instruction to your Bank or Building Society

Membership Number

Name

Postcode

Instructions to your Bank or Building Society

Please pay Campaign for Real Ale Direct Debit from the account detailed on the instruction subject to the signature of the Direct Debit Member. I understand that the bank will only collect with Campaign for Real Ale Ltd and it will be paid electronically to my Bank Building Society.

Signature

Date

Banks and Building Societies may not accept Direct Debit instructions for some types of accounts.

THE BARNSBURY

209-211 LIVERPOOL ROAD • ISLINGTON • LONDON N11 1X

"The real ale haven in Islington"

- Over 130 ales in our first year and still counting
- Immaculately kept local beers and microbrews
- Intimate pub dining
- Sun trapped beer garden

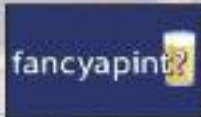


Tel: 020 7607 5519

Twitter @thebarnsburypub

www.thebarnsbury.co.uk

All ales £2.50 a pint
Mondays and Tuesdays.
See website for
ales on tap.



4 PINT RATED PUB

ale. Bar and restaurant operated by small independent Huxleys chain.

UXBRIDGE (UB8), BRUSHWOOD INN, Harlington Rd, Hillingdon Hill. Greene King: London Glory; guest beer (Greene King; Abbot or local brewery beer). Formerly **TURKS HEAD**. (W215, U220,221)

PUBS CLOSED, CONVERTED, DEMOLISHED OR CEASED SELLING REAL ALE

CENTRAL

EC2, O'NEILLS, 64 London Wall. M&B, ex-Bass, closed December 2011. Formerly **TALBOT**. (E36, U69,120,161,193)

EC2, PITCHER & PIANO, Marston, now confirmed converted to a Boots store. (U133,197,218)

W1(F), MORTIMER, Free (Chapel Inns), closed and converted to 'Black & Blue' bar/steakhouse in 2009 with no draught beer. Delete from pub database. (W46)

EAST

E1, FORTY FIVES. Renamed **BAR 45** in early 2011, Punch, ex-Allied (Taylor Walker), closed and boarded up. Formerly **THREE CRANES** and was **FORTY FIVE** for a while in the '80s and '90s. (E65, U79,205)

E3, TENTERDEN ARMS, Enterprise, now demolished. (E93, U159,191,195)

E8, BELGRAVE ARMS, Punch, now demolished in 2011 and new flats under construction on site. Pub established in 1837. (E111, U98,216)

E11, COLEGRAVE ARMS, Enterprise, now sold to an Islamic community and by October 2011 was reported being converted to a mosque, apparently without planning permission being sought. Pub dates from 1869. (E127, U124,168,214)

E16, CUSTOM HOUSE, Custom House Hotel, Free, H removed. Hotel bar, formerly **VICTORIA (PUB & KITCHEN)** and originally **FIGURE HEAD**. (U160,163,174,199)

E17, ESSEX ARMS, Enterprise, now confirmed demolished and replaced by new Tesco store with 17 flats above. (E167,U197,203,211,219)

E18, NAPIER ARMS, Enterprise, ex-Bass, no real ale. (E171, U133,168)

NORTH

N6, ALL BAR ONE, M&B, ex-Bass, closed by January 2004 and converted to a Chinese restaurant and a Zizzi restaurant. (U128)

N13, WISHING WELL, Wishing Well (not Free), H removed. Established in 1998 as **WANDER INN** but renamed by September 1999. (U150)

N14, WAGGON, Enterprise, ex-Whitbread, H removed. Formerly **WAGGON & HORSES**, was **HAYWAIN** for a while. (N119, U161,163,180)

N17, ANTWERP ARMS, Enterprise, still closed following fire with rumours it won't reopen. (N133, U214)

NORTH WEST

NW1, HEROES, Enterprise, closed after revocation of licence by Camden Council following police complaints. Formerly **FLOWERPOT**, **BULLET**, **VERGE** and originally **CASTLE**. (N163, U156,184,211,216,220)

NWS, CROCKERS FOLLY. Planning permission now

granted to convert upper three floors to five flats. (N213, U142,152,167,177,200,209,218,220)

NW11, ROYAL OAK, Spirit, now demolished and replaced by flats with an estate agent on the ground floor (originally intended for licensed premises). (N227, U191,193)

HAREFIELD (UB9), BREAKSPEAR ARMS, Greene King, H unused. A new tenant is being sought who will 'create a bespoke family dining pub/restaurant'. (W147)

HAREFIELD (UB9), SWAN, ex-Enterprise. Planning application by new developer owner for demolition and replacement by flats now rejected on grounds that they had failed to try to market it as a pub. (W148, U214,219)

HARROW (HA2), SHAFTESBURY, Upper Deck Ltd, H unused. Formerly **ECLIPSE**. (W150, U213)

NORTHWOOD (HA6), OLDE NORTHWOOD, Punch, H unused. (W178)

SOUTH EAST

SE1, LORD NELSON, 386 Old Kent Rd, Southwark Council, closed. (SE24, U220)

SE1, ROSE, ex-Bass, closed and being demolished in December 2011. (SE31, U193)

SE1, WORLD TURNED UPSIDE DOWN, Enterprise, ex-Watney via Unique, closed. (SE41, U109,116)

SE5, CASTLE, 188 Camberwell Rd, ex-Courage, closed and converted to a mosque. (SE56, U182,209)

SE5, SUN & DOVES, S&NPC, closed following bankruptcy of leaseholder. Featured on BBC Radio 4 'PM' programme recently. (SE62, U205,211)

SE6, COPPERFIELD, Punch, ex-Spirit, closed while licence is reviewed by Council in light of representations from the police following antisocial behaviour. A new lessee is believed to be being sought by Punch. (SE67, U107,202)

SE6, TIGERS HEAD, Wetherspoon, flats now under construction on site. Formerly **SQUIRE** for a while. (SE69, U102,191,212)

SE17, TEMPLE BAR, ex-Bass, closed and converted to Poundland store. (SE160, U108,188)

SE19, CAMBRIDGE, ex-Pubs 'n' Bars, closed. (SE178, U219)

SE23, FOREST HILL, Punch, ex-Truman via S&N, closed by July 2011 and being converted to flats. Formerly **FOREST HILL HOTEL**. (SE205, U102)

SE27, GIPSY TAVERN, Punch, ex-Allied (Taylor Walker), closed. (SE228)

SOUTH WEST

SW1 (P), CLARENDON, Free, closed and boarded up. Formerly **COUNTRY PUB IN LONDON**, previously **GROSVENORS**. (SW41, U137,157,184)

SW2, TELEGRAPH, Enterprise, now converted to church. (SW54, BSM24)

SW7, SWAG & TAILS, Independent (Tamara Ecclestone), now all signs of it having been a pub have been removed although the ground floor appears to be vacant. (SW73, U192,203,214)

SW18, GRID INN, Wetherspoon, confirmed closed November 2011, shuttered and signage removed in preparation for its fate in the hands of Tesco's. (SW112, WB11, U221)

Capital Pubcheck - update 222

MORDEN (SM4), GANLEY'S IRISH BAR, Free, H removed. Formerly JACK STAMPS BEER HOUSE and originally END OF THE LINE. (SW150, BM38, U198)

WEST

W5, BROADWAY BAR. Confirmed now converted by M&B to 'Tuk Cho' pan-Asian restaurant with bottled beers only; delete from pub database. Formerly EDWARDS. (W93, U219,221)

W11, BAR 128, Stonegate, no real ale. Formerly ALL BAR ONE. (W118, U217)

W11, HOOP, ex-Young's, already reported converted to building society, now a bakers shop. (W235)

W11, TAVISTOCK ARMS, Free, now demolished and replaced by modern flats. Formerly CRESCENT HOUSE, MOTHER RED CAP, BABUSHKA, FROG & FIRKIN and originally TAVISTOCK HOTEL. (W118, U198,202,216)

BRENTFORD (TW8), GEORGE & DRAGON, Punch, closed and for auction. (W131, U199,204,215)

BRENTFORD (TW8), NEW ENGLAND, Free, planning permission now refused for demolition and replacement by a six storey mixed use development. (W134, U191,209)

HESTON (TW5), HOPE & ANCHOR, Free, planning application now submitted for change of use to retail with 12 studio flats on upper floors, together with a detached 3-bed house. (W163, U196)

HESTON (TW5), RISING SUN, Enterprise, closed and

planning application submitted for conversion to four flats. (W165)

ISLEWORTH (TW7), ROSE & CROWN, Punch, now put up for auction. (W172, U204,209)

SOUTHALL (UB2), NORTH STAR, Free, closed and planning permission granted by Hounslow Council in July 2011 to convert the upstairs to flats and to extend the rear. The building is unlikely to reopen as a pub as it 'is proving to be economically unviable' It is proposed to alter and enhance the layout on the ground floor to make it more flexible for occupiers, thus encouraging an alternative commercial tenant within use classes A1/A3/A4. Locally rumoured to become a shop, possibly Tesco. (W188)

SOUTHALL (UB2), OLD OAK TREE, Enterprise, closed and freehold for sale with vacant possession for alternative uses subject to planning approval or lease for pub or commercial purposes. (W188)

TEDDINGTON (TW11), QUEEN DOWAGER, ex-Young's. Now a planning application for demolition and replacement by two 4-bed town houses has been submitted by Crowton Properties Ltd. (W196, U221)

TWICKENHAM (TW1), GRAND UNION, S&NPC. Renamed RUGBY INN and painted externally but closed and lease for sale. Formerly FILTHYS, previously HOBGOBLIN. (W203, U188,195)

UXBRIDGE (UB8), OSTLER, TCG, now converted to Prezzo restaurant. (W211, U216,218,220)

UXBRIDGE (UB8), PRINCE ALBERT, Free, H unused.

The Pembury Tavern

90 Amhurst Road, London E8 1JH
020 8986 8597

Real Ales, Cider and Perry,
German and Belgian bottled beers,
Fine Wines and Meads

Open 12-11 every day
and later on Friday/Saturday

Next beer festival
22nd-26th February

Modern Italian kitchen serving
main dishes 12-9pm,
stonebake pizza 12-10pm
(and to 11pm Thu/Fri/Sat)

<http://www.individualpubs.co.uk/pembury/>

SPBW London Pub of the Year 2010



The Pembury Tavern in the 1890s

(W214, U212,221)

WEST DRAYTON (UB7), FOX & PHEASANT, Enterprise. Now Tesco have submitted a planning application but only for new doors and fitting an ATM machine, since our ridiculously weak planning system does not require a change of use from pub to retail to be democratically debated. How many more London pubs are to be lost before the Government takes action on its promises to review this situation? (W225, U221)

OTHER CHANGES TO PUBS & BEER RANGES

CENTRAL

EC1, OLD FOUNTAIN. Changing guests include Brodies, Crouch Vale, Kent and Summer Wine, plus 18 different bottled beers from Kernel. Independent, ex-Whitbread. (E21, U92,207)

EC1, ONE TUN, -beers listed except Adnams: Bitter; +Harvey: Sussex Best Bitter; +Wadworth: 6X; +Wychwood: Brakspear Oxford Gold. Beer range varies. (E21, U190)

EC1, SIR CHRISTOPHER HATTON, -beers listed except Fuller: London Pride; +St Austell: Tribute; +Sharp: Doom Bar; +guest beers. Now M&B (Nicholson), ex-Bass. Was GOOSE (AT HATTON GARDEN) for a while. (E24, U174, U203)

WC2, HA HA (BAR & GRILL). Renamed **ALL BAR ONE**, + Sharp: Doom Bar. Formerly HA! HA! (BAR & CANTEEN). (W33, U207,216, WC41)

WC2, SEVEN STARS. Freehold acquired from Enterprise by Fuller's at this Good Beer Guide pub in September 2011. No change in tenancy and Fuller's have confirmed no change to beer policy. Added to the tenanted estate. (W40, WC54)

W1(Mar), CARPENTERS ARMS. Harvey: Sussex Best Bitter; varying guest beers (e.g. Nethergate, Sambrook's, Windsor & Eton, Wychwood). (W51)

W1 (Mar), OCCO. Renamed **HONEY POT**, independent 'pub & tapas bar' and part of a small chain who also run the Beehive, 126 Cranford St, W1 (Mar). Still no real ale. (W56)

EAST



E4, KINGS FORD, -beers listed except Courage: Directors; +Greene King: Abbot, Ruddles Best Bitter; +guests (e.g. Brentwood and Nethergate). (U119)

E8, ANATOLIA BAR. Reverted to **MADDIGAN'S**. Formerly AMP, MADDIGANS (OF MARE STREET), HOBSONS CHOICE and originally HORSE & GROOM. (E113, U65,132,184,187,192,198,210)

E8, RAILWAY TAVERN, 59 Kingsland High St. Now Punch, ex-Bass, still no real ale. (E115)

E9, BRITANNIA, -beers listed; +WJ King: Brighton Bes, Brighton Blonde; +one or two guests from LocAle brewers. Formerly VICTORIA PARK, FALCON & FIRKIN and originally QUEENS HOTEL. (E120, U191,202,204)

E11, RED LION. Varying micros on ten handpumps (e.g.

Magpie & Crown

REAL BEER with REAL FOOD

Fantastic Choice of Real Ales

Regular beers from Morble, Windsor & Eton, Downton, Ascot Ales, Twickenham Five Ales
Great brews from Kissinggate, Strands, Moor, and other great breweries, coming soon

Classic Pub Food

including Real Cumberland Sausage, Homemade Burgers & Belgian Ale Pies
12pm-3pm & 6pm-9:30pm
now serving Sunday Roast

Selected Belgian Beers

Hoegaarden, Fruiti, Westmalle Dubbel, De Bruijn Tremors, Kasteel Rouge, Lechhofort (...)
available on draught & by the bottle

128 High Street, Bradford, Mads. TW5 8EH - 020 8560 4570 - www.magpieandcrown.co.uk - info@magpieandcrown.co.uk - @MagpieandCrown

Capital Pubcheck - update 222

Bath, Dark Star, East London, South Hams, Summer Wine) at this Antic pub. Was ZULUS for a while. (E129, U73,79,160,168,196,215,219)

E11, SIR ALFRED HITCHCOCK, -beers listed; +Fuller: London Pride. Free house operated by Albar. (E129)

E17, LORD PALMERSTON, -beers listed; +Marston: EPA; +Wells: Young's Bitter, (E167, U126,184,204,217)

WOODFORD GREEN (JG8), ROSE & CROWN, -beers listed, + Greene King; IPA, Abbot. (X132, U172,192)

NORTH

N1, BARNSBURY. Guests include Acorn, Broughton and Rudgate beers. Formerly HOURICANS. (N48, U175, IS7, U217)

N1, KINGS HEAD, -beers listed; +Flowers: IPA; +St Austell; Proper Job, Tribute; +Taylor: Landlord. (N50, U159, IS11, U212)

N1, WENLOCK ARMS. Hackney Council's planners seized the initiative in mid-December and extended the Regent's Canal Conservation Area, in the process protecting the Wenlock Arms from demolition. It was further recognised for its heritage value by being designated as a Building of Townscape Merit. (N62, IS21, U214,220,221)

N4, STAPLETON TAVERN, -Greene King; Abbot; +Greene King: seasonal; +guests (e.g. Butcombe, Elgood).

Note correct name (not just STAPLETON). Formerly LARRICK, PIPPIN, DANZIBAR and originally

STAPLETON HILL TAVERN. (N73, U155,159,213)

N6, WINCHESTER HALL HOTEL. Now simply

WINCHESTER, -beers listed; +Greene King: OSH. (N83, HH9)

N6, WOODMAN, -beers listed except Wells: Bombardier; +Caledonian: Deuchars IPA, seasonal; +Greene King: OSH. (N83, U106,157,175, HH9)

N8, MAYNARD. Reverted to **MAYNARD ARMS**, -Greene King beers; +Truman's Runner (now believed brewed by Everard); +Sambrook: Junction; +two guest beers (e.g. Nethergate, Old Dairy, Thwaites). The first of seven pubs in London to be transferred from the main Greene King managed estate to Realpubs since the latter's takeover. Refurbished pub and garden with 70 cover dining room. Formerly HUNGRY HORSE (THE MAYNARD) for a while. (N94, U117,143,157,195, HH37)

N13, FOX. Now independent, ex-S&N via Spirit by September 2008, still no real ale. (N115, U106,163)

N13, WOODMAN, +Marston: EPA, Pedigree. (N116, U119,221)

N16, WHITE HART, 69 Stoke Newington High St, -beers listed; +St Austell: Tribute; +Sharp: Doom Bar; +Taylor: Landlord; +one or two guest beers. Was MURPHYS TAVERNS for a while. (N129, U166,216)

ENFIELD WEST (EN2), ROSE & CROWN, -beers listed; +Caledonian: seasonal beer; +Fuller: London Pride. Now S&NPC, ex-S&N. (N237, U106)

NORTH WEST

NW1, CHAPEL, -beers listed except Greene King: IPA; +Greene King: OSH. Operated by Chapel Inns, ex-Bass

46 GREAT PETER STREET, VICTORIA SW1P 2HA

THE SPEAKER

A REAL PUB IN THE HEART OF LONDON

NO MUSIC - NO SMOKE - NO STAIRCASES
Tel: 020 7223 1780 / www.speakerpub.com

The Speaker invites you to their

From Monday 13th February
Two weeks of Sussex ales

From Monday 12th March
Two weeks of ales from
Norfolk and Suffolk

Open Monday - Friday 11 AM - 11 PM

ALE CIDER MEAT

THE SOUTHAMPTON ARMS

18 HANDFULS FULL OF LOVELY ALE & CIDER
AND A FRIDGE FULL OF LOVELY MEAT

HIGHGATE RD NW5. KENTISH TOWN/GOSPEL OAK

via Punch, by January 2010. (N172, U109, CE19)
NW1, SHEEPHAVEN BAY, +Taylor: Landlord. Formerly MORNINGTON ARMS. (N170, U157,205)
NW3, OLD BULL & BUSH, -beers listed; +Adnams: Green Bullet; +Sharp; Doom Bar; +Wells: Young's Bitter. Now M&B, branded 'Premier Country Dining', ex-Allied (Taylor Walker) but spent a while operated by Orange Pubs. (N184, U151,189, HH16)
NW5, BULL & GATE. For sale by owners, the Lynskey family, for £2.7 million after 32 years trading. It is expected to 'appeal to investors and developers', which sounds ominous. A live music venue which has hosted Coldplay and Blur. (N197, U174, CE25, U202,212)
NW5, LORD SOUTHAMPTON, -beers listed; +Greene King: Ruddles Best Bitter; +Sharp: Doom Bar. Enterprise, ex-Courage. (N199, CE27)
NW5, SIR ROBERT PEEL, -beers listed; +Caledonian; Deuchars IPA. S&NPC, ex-Watney. (N200, CE28)
NW6, RAILWAY, -beers listed, +Fuller: London Pride; +Greene King: OSH; +Hook Norton: Hooky Bitter; +St Austell: Tribute. Now Spirit with renewed 'Original Pub Co' branding, ex-S&N. Was RAT & PARROT for a while. (N206, U174,196, HH21)
NW7, MILL, -beers listed, +Fuller: London Pride; +Greene King: IPA; +Sharp: Doom Bar; +Taylor: Landlord. Now independent, ex-Bass via M&B in 2009. (N209, U151)
NW7, RAILWAY TAVERN. Now Punch, ex-Spirit, no change in beer range. (N210, U106,160,193)
NW11, WHITE SWAN, -beers listed, +Fuller: London Pride. Has a strong Hungarian influence. Now independent, ex-Bass via M&B by September 2008. (N227, U151)

SOUTH EAST

SE1, BREW WHARF, -beers listed; +varying house-brewed specials. Recent examples have included American Amber (4.5%), and JPC Oatmeal Stout (5.6%) at £4/pint each. (U186,196)
SE1, OLD KINGS HEAD, -beers listed; +Butcombe: Bitter; +Harvey: Sussex Best Bitter; +Marston: Pedigree; +St Austell: Proper Job, Tribute; +Wells: Bombardier. S&NPC pub. (SE28, U188)
SE1, ST CHRISTOPHER'S INN, -beers listed; +Rebellion; IPA; +St Austell: Proper Job; +Twickenham: Naked Ladies, Sundancer; +Vale: VPA. Now Interpub, ex-Courage. (SE19, U117)
SE5, CASTLE, 65 Camberwell Church St. Renamed RECREATION GROUND. Formerly SNUG, PACIFIC and originally STIRLING CASTLE. Now Enterprise, ex-Courage via Unique. (SE62, U119,159,176)
SE5, HOOPERS. A complaint from a residential neighbour on grounds of noise has resulted in Southwark Council reviewing the premises licence. This could affect the pub's viability by threatening the hosting of live music and restricting the use of the outside smoking area. Locals, regulars and CAMRA members have rallied round to support Jamie Hooper in defending one of the best run community pubs in SE London. The review hearing is scheduled for 30 January. Formerly IVANHOE. (SE58, U102,195,217)
SE10, SHIP & BILLET. Renamed DUCHESS BAR. Was FROG & RADIATOR for a while. (SE94, U102,107,185,187,190,202)

SE13, TEMPLE BAR. Renamed GREEN ROOM. Originally SHILLELAGHS BAR. (U125,202)
SE15, GEM (BAR RESTAURANT). Renamed AFRIKAPA. Formerly CANTERBURY ARMS. (SE134, U197)
SE22, BISHOP, -beers listed; +Florence: Bonobo; +Greene King: Morland Original; Ruddles County; +Sharp: Sharp's Own. Formerly FORESTERS ARMS. (SE198, U122,184,220)
SE22, FRANKLIN'S, -Wells: Young's Bitter; +Harvey: Sussex Best Bitter. (U152,198)
SE22, PLOUGH, -beers listed; +Adnams: Broadside, seasonal; +Fuller: London Pride; +Oakleaf: IPA; +Sharp: Doom Bar. Now M&B, ex-Bass. Was GOOSE & GRANITE for a while. (SE201, U124,185)
SE23, DARTMOUTH ARMS, -beers listed except Fuller: London Pride; + Sharp: Doom Bar; +Taylor: Landlord. Now Enterprise, ex-Courage via Unique. (SE205, U184)
CHISLEHURST (BR7), SYDNEY ARMS, -beers listed except Courage: Best Bitter; +Fuller: London Pride; + Sharp: Doom Bar; +Wells: Bombardier. Now Enterprise, ex-Courage. (3SE277, 8K63)
ORPINGTON (BR6), BLACK HORSE, Locksbottom, -beers listed; +Adnams: IPA; +Fuller: London Pride; +Harvey: Sussex Best Bitter; +Wells: Bombardier. (3SE265, 8K115, U181)
ORPINGTON (BR6), ROSE & CROWN, Green Street Green, -beers listed; +Wells: Young's Bitter, Bombardier, 1831; +guest beer (Adnams: Bitter). Free House owned by Regans, bought by Young's by September 2007 but not previously reported. A 'pub & dining' outlet. (3SE267, 8K98)
ORPINGTON (BR6), ROYAL OAK, Green Street Green, -beers listed; +Fuller: London Pride; +Sharp: Doom Bar; +guest (e.g. Rooster). Now M&B (Vintage Inns) ex-Whitbread (Beefeater). (3SE267, U53, 8K98, U177)
SIDCUP (DA14), SEVEN STARS, Footscray, -beers listed except Greene King: IPA; +Fuller: London Pride. Now Punch, ex-Bass and freehold for sale in 2011 via AG&G. ((3SE274, K72)

SOUTH WEST

SW1 B), PAXTONS HEAD, -beers listed, +Fuller: London Pride; +guest beers (e.g. Adnams: Ghost Ship, Wells: Bombardier, Young's London Gold). (SW38, U157)
SW1(P), CASK (PUB & KITCHEN). Now dispenses 10 daily varying ales from micros (e.g. Arbor, Brodies, Mikkeller, Otley, Redemption, Thornbridge, Whitstable). Formerly PIMLICO TRAM. (SW44, U148,208,211)
SW1(P), WHITE SWAN, -beers listed; +Adnams: Broadside; +Fuller: London Pride; +Greene King: Old Golden Hen; +St Austell: Tribute; +Taylor: Landlord; +Wells: Young's London Gold. Now Spirit (Taylor Walker branded), ex-S&N. (SW44, U139,148)
SW2, ELM PARK TAVERN, -Fuller: London Pride; +Purity: Pale Ale, Ubu; +Sambrook: Junction. Substantially and successfully refurbished under new ownership in 2011; this pub is rescued and now thriving, with its unique portrait of Samuel Foote prominent in the main bar. (SW52, BSM18)
SW7, HOOP & TOY, -beers listed; +up to six varying ales (e.g. Fuller: London Pride, Greene King: Old Golden Hen;

Capital Pubcheck - update 222

Shepherd Neame: Spitfire; Wells: Young's London Gold). Now Spirit (Taylor Walker branded), ex-S&N. (SW72)
SW7, TEA CLIPPER. Now Convivial, ex-Capital Pub Co. (SW73, U185)

SW14, CHARLIE BUTLER, ex-Young's. New owners Langard Investments Ltd submitted a fresh planning application in November 2011 to Richmond Council to demolish and replace the pub with a four storey apartment block, due to be considered in January. Local MP Zak Goldsmith has raised concerns with the Council. The tenant (inherited from Young's) has been informed that the owners plan to close and board up the pub in late February regardless. (SW97, U200, RHP7, U221)

SW14, PLOUGH. Freehold acquired by Fuller's from Enterprise in September 2011. No change to tenant and pub has been added to tenanted estate. Fuller's have confirmed that access to Fuller's seasonal beers and a fortnightly rotating guest will be made available. (SW98, RHP9, U207)

SW18, GARDENERS ARMS, +Twickenham beers. (SW112, WB10)

SW19, GROVE SW19. Planning application to demolish for retail and flats rejected for reasons including that 'the proposals would result in the loss of an existing public house, for which the applicant has failed to demonstrate by means of appropriate marketing evidence whether the existing public house is economically viable, resulting in the loss of a community facility, which includes an ancillary entertainment function, thereby diminishing facilities available to the community, contrary to adopted policies L.15 & L.16 of the Merton Unitary Development Plan (2003)'. Formerly GROVE TAVERN and was DOYLES for a while. (SW117, BM27, U210,211,221)

KEW (TW9), INN AT KEW GARDENS, -beers listed except Greene King: IPA; +Adnams; Explorer; +Hogs Back; TEA; +Sambrook: Wandle. Formerly listed as KEW GARDENS HOTEL. (SW138, U183,191,RHP15, U220)

KINGSTON (KT2), GREY HORSE, +Twickenham beers. (SW143, 2KT21)

MORDEN (SM4), ROYAL SURREY PUB, -beers listed; +, Ruddles Best Bitter. Formerly ABBOT. (SW150, BM37, U211,213,214)

RICHMOND (TW10), LASS O'RICHMOND HILL, +Twickenham beers. Was OLD ORLEANS for a while. (SW156, U164, RHP22, U214,216)

RICHMOND (TW9), MITRE, +Twickenham beers. (SW155, RHP23)

RICHMOND (TW9), ORANGE TREE, +Twickenham beers. (SW156, RHP24)

RICHMOND (TW9), RED COW, +Twickenham beers. (SW156, RHP27)

RICHMOND (TW9), SHAFTESBURY ARMS, +Twickenham beers. (SW158, RHP29)

RICHMOND (TW9), WATERMANS ARMS, +Twickenham beers. (SW159, RHP33)

SURBITON (KT6), BLACK LION, +Twickenham beers. (SW160, 2KT39)

SURBITON (KT6), WAGGON & HORSES, +Twickenham beers. (SW163, 2KT44)

WEST

W4, GROVE PARK. Renamed STATION HOUSE in

January 2008, -beers listed except Fuller: London Pride. Now Punch (leased to House Bars), ex-Spirit. Website refers to OLD STATION HOUSE but that name is not visible outside. (W89)

W4, REVOLUTION. Renamed 18 20, still no real ale. Formerly PITCHER & PIANO. (W90, U199)

W6, DUCHESS OF CAMBRIDGE, -beers listed; +varying real ales from micros on handpump and direct from the cask (e.g. Brodies, Downton, Rebellion, Titanic etc.). Formerly BROOK (RESTAURANT & PUB), PACIFIC (BAR & GRILL) and CAFE MED. (W101, U192,215,220)

W9, RED SQUIRREL, -beers listed; +Westerham: SPA with three different Westerham beers forthcoming in turn. Formerly SKIDDAW. (W115, U186,217)

W13, FORESTER. Real ale now all on handpump. Fuller: London Pride and five guests (e.g. Marston group, Sambrook's, Twickenham). (W126, U221)

HAYES (UB3), RED LION. Still trading but freehold for sale by Enterprise with vacant possession on an unconditional basis. The agents also point out the site could provide for alternative use subject to planning approval. (W161, U203,221)

HILLINGDON (UB10), SWALLOW, -beers listed; +Fuller: London Pride; +Greene King: IPA. (W166)

HOUNSLOW (TW4), DUKE OF WELLINGTON, Greene King, still trading but a planning application has been submitted by Sainsburys to install entrance doors, an ATM, new chiller unit etc, with no requirement to apply for change of use to retail as such. Another example of the planning loophole highlighted at the Prince Albert in West Drayton (above) and numerous other examples in previous Updates. (W167)

TEDDINGTON (TW11), ABERCORN ARMS, +Twickenham beers. (W194)

TWICKENHAM (TW1), FOX, -beers listed except Fuller: London Pride; +Sharp: Doom Bar; +Twickenham: Naked Ladies; +three guest beers. (W202, U191)

TWICKENHAM (TW1), GARRYOWEN (THE). Renamed LONDON ROAD. Formerly CODEES BAR (AT THE RUGBY TAVERN), originally RUGBY TAVERN. (W202, U203)

TWICKENHAM (TW1), MISTY MOON, -beers listed except Fuller: London Pride; +Courage: Best Bitter. Operator now named Three Wishes formerly known as Valeart Design (Heart Vale). Formerly MOON UNDER WATER. (W203, U188)

TWICKENHAM (TW1), OLD ANCHOR, +Twickenham beers. (W203, U209)

UXBRIDGE (UB8), MALT SHOVEL, -beers listed except Fuller: London Pride; +Sharp: Doom Bar; +guest beer (e.g. Acorn). (W214, U202)

CORRECTIONS TO UPDATE 219

PUBS CLOSED ETC

E15, ESSEX ARMS. Should read E17.

TWICKENHAM (TW1), KOYOTE BAR. Delete entry, still open albeit only Fri/Sat evenings until late.

OTHER CHANGES ETC

WC2, LAMB & FLAG. Devonshire Estates should read Devonshire Leisure.

CORRECTIONS TO UPDATE 220

NEW & REOPENED PUBS ETC

N1, SLUG & LETTUCE. Delete ref IS20.

NW1, TAVERN IN THE TOWN. Should read TAVERN INN THE TOWN

PUBS CLOSED ETC

E14, OPORTO TAVERN is Punch, ex-Bass.

NW9, BLARNEY STONE. Should read ex-S&N.

OTHER CHANGES ETC

SE22, ACTRESS. Should read: Lease acquired by Greene King.

CORRECTIONS TO UPDATE 221

NEW & REOPENED PUBS ETC

EC2, WHISTLING SHOP. 'Hand & Bumper' should read 'Heeltap & Bumper'

SE1, BALTIC is an independent Polish bar.

SW11, POWDER KEG DIPLOMACY is an independent bar and restaurant.

HESTON (TW5), JOLY WAGGONER should read JOLLY WAGGONER.

PUBS CLOSED ETC

COLLIERS ROW should read COLLIER ROW.

OTHER CHANGES ETC

EC1, SLUG & LETTUCE (now SPORTS BAR & GRILL (FARRINGTON)) is an independent pub/restaurant.

E14, YATES'S should read E15

N4, BROWNSWOOD PARK TAVERN. Add: Independent, ex-Bass.

SW14, CHARLIE BUTLER. Ref RHP9 should read RHP7.

FELTHAM (TW3) should read (TW13)

THE WENLOCK ARMS, HOXTON

The Wenlock Arms is a CAMRA prize-winning real ale C19th pub with an interesting and still in parts authentic historic interior. Its original purpose was as a beer house for local people who were for the most part workers in the docks, warehouses and factories which lined the adjacent Wenlock Basin. In October Hackney Council refused consent for a development scheme which would have demolished the Wenlock and produced an unlovely block of flats. Amongst their reasons for refusal were that the development was contrary to London Plan 2011 policies, local planning policy and national planning policy on the historic environment, PPS5.

The application triggered a reassessment of the area's suitability as a conservation area and, while that was being carried out, the developers issued a demolition notice. On 19 December Hackney's Cabinet agreed to extend the Regent's Canal Conservation Area to rationalise the boundary and to include a number of statutorily listed and locally listed buildings as well as a small park, early C20th social housing and the Wenlock Arms. The Conservation Area designation will protect the buildings within it from full or partial demolition without proper consent from the planning authority.

In Early January the Wenlock's Facebook page revealed that the present owners 'are moving out on the 5th April and that the developers take over on the 10th'. There is still, we fear, more to come on the Wenlock Arms saga.

Dale Ingram

Advertise in the next LONDON DRINKER.

Our advertising rates are as follows:

Whole page £325 (colour), £260 (mono);

Half page £195 (colour), £145 (mono);

Quarter page £105 (colour), £80 (mono).

Phone John Galpin now on 020 3287 2966

Mobile 07508 036835

Email: johngalpinmedia@gmail.com or Twitter@LDads

or on Facebook: London Drinker Ads

THE FINAL COPY DATE FOR ADVERTISING IN OUR NEXT ISSUE (APRIL/MAY) IS THE FIRST OF MARCH

Cobbett's Real Ales



5% discount
with CAMRA
membership
card

An independent off-licence specialising in Real Ales and Ciders, in bottles and on draught

Opening hours: Mon closed, Tue-Thur 12-8pm
Fri & Sat 10-8pm, Sun 12-6pm

23 West Street, Dorking, Surrey RH4 1BY
Tel: 01306 879877

Email: info@cobbettsrealales.co.uk
www.cobbettsrealales.co.uk

A Publican's view

As any employer knows, finding the right and suitable staff is a potential nightmare. Ideally, they will be polite, friendly and smiling (if they can?); clean and tidy in themselves and need to know about the various stock, even if they don't like the product themselves. I have been in pubs (as a customer) where the staff haven't the faintest idea what they are serving, or how to serve it.

A little research can give enough basic knowledge to sound as if you know what you are talking about. For example, with the real ales, know what is sold and strength/colour/aroma/flavour so that the customer is able to consider his/her purchase. With wines, know the broad differences between each sold but without being a wine connoisseur! A bit like knowing the difference between a bacon sandwich and a beef sandwich!

Knowing which glasses are for which drinks is a good thing (but difficult when you are very busy and running out of glasses).

It's very important cleaning the glasses and equipment. Use the appropriate cleaning products and make sure the cleaning regime is perpetuated. An 'unclean' glass can ruin a good beer. During my time in relief management, I have encountered three pubs where the staff did not know that they were expected to empty the glass washing machines

daily (or even ever!) and refill. The thought of my glasses being washed in the same old water for weeks on end is horrific!

As my colleague Roger says, "*Our job would be OK if it wasn't for the customers!*" but they are our income, our business and our life. Most premises need to maintain a balance of customers and their different needs – particularly with local community pubs. Some customers may be totally sport orientated, some like only football (or cricket), some might like a quiet corner to converse in with old friends, some have young (or old) families or friends and they wish to enjoy each other's company. Some may have children or dogs or both, and need a special place. Without large premises you have to make do with what you have and trust (and hope) that the customers will be tolerant with each other.

If you have special events albeit occasional or frequent, let the customers know in good time so that those who wish to participate may and those who wish to avoid may also.

Know your customers' needs. They don't – they only think they do!! Buy (and therefore sell) good quality products kept in proper conditions. As a general rule, I prefer to deal direct with the brewer/breweries. The brewer wants his beer to be



The Hope

48 West Street, Carshalton, Surrey. SM5 2PR

020 8240 1255 www.hopcarshalton.co.uk

"By Beer Enthusiasts, for Beer Enthusiasts"

3 mins from Carshalton Station

6 real ales (always includes one dark), 3 real ciders, Wide choice of foreign bottled beers, plus Hacker-Pschorr and Brewdog 7/7 on draught

Quality home cooked pub grub 12-3, Hot 'pot' meals available in the evening

No music or machines. Large garden. Look at our "Beer Cam" on www.yourround.co.uk

Music Festival 24th – 26th Feb. Ticket event – see Hopemusicfest.co.uk

Upcoming beer festivals: 1-3 March (Madness), 29-31 March (London)

We source real ale locally (at least 2) and nationwide. Breweries we like to use;

Dark Star, Thornbridge, Windsor & Eton, Marble, W.J. King, Brewdog, Titanic, Kent, Marble, Magic Rock, Redemption, Saltaire, Kissingate, Downton, Red Squirrel, Oakham, Brewsters, Broadies, Crouch Vale, Acorn & others that attract our attention

THE FOX



Following a huge renovation Twickenham's oldest pub, The Fox, is now open!

8 REAL ALES

FOOD

GARDEN BAR

LIVE MUSIC

39 Church Street, Twickenham
Middlesex, TW1 3NR

020 8892 1535

www.thefoxpubtwickenham.co.uk

FOR A FREE PINT PLEASE FILL IN YOUR
DETAILS BELOW & HAND IN AT THE BAR

NAME

EMAIL

1 PINT PER PERSON, NOT TO BE USED IN CONJUNCTION WITH ANY OTHER OFFERS

THE OLD COFFEE HOUSE

A Real Pub in the heart of West London



Open 11am till 11pm

An exciting selection of Brodie's Beers over five handpumps
including the exclusive West End Best!

49 Beak Street London W1F 9SF
020 7437 2197

0.4km from Piccadilly Circus Station / Oxford Circus Station

'right'; I want to sell his beer 'right'! A middle man may be primarily concerned with getting a turn on his money and is less concerned about the storage and transport of the ale.

Top pressure, real ales, bottled beers etc., spirits, wines, soft/non alcoholic drinks all need to be kept in good condition and not out of date or tainted by old age or dust – except maybe for that special bottle of vintage port or a fine red wine that you have set aside for a special occasion or for an indulgent night in on your own. Please keep the beer lines clean! When being a nosey customer in another pub, I have occasionally witnessed a barrel change when the new beer has been pulled through and the dregs of the previous barrel are still present, without even the decency of a wash through with clean water. Why on earth would anyone want to do that? After all, would you take the unsaleable, undrinkable, dregs of the outgoing brew in a glass and top it up with fresh new drinkable ale, or put a meal on an unwashed plate?

For my real ales, every barrel change means a proper clean. Pull clean water through the line to get out the old (and occasionally not very nice) dregs, followed by 'line cleaner' and then two tubs (about a gallon) of clean fresh water before the new barrel is tasted, checked and then connected. To my mind, no other method is correct. Through this cleaning regime, my beers are kept in good condition and are hopefully a credit to the pub (and therefore the business).

Please serve fresh ales! When I was working as a 'relief' manager (covering holidays, sickness and dismissal shortages), occasionally I would arrive and find about four real ale lines serving different but all mediocre, poor quality and 'off' beers that had been on too many days. I would shut down two lines and put on fresh, good ales and managed, after a fairly short period of dissent from the locals, to serve them with good beer, albeit a more limited choice. If you are selling two but two very good beers and they are turning over fast, trade will increase and then you can look at increasing your range.

Even top pressure lines need to be thoroughly cleaned, ideally weekly. It takes a couple of hours once a week but keeps the build up of yeast out of the system and the beer tasty (if you believe that lager can be tasty?).

Over recent years, food has become an increasingly large part of a public house. Be it snacks across the counter or a full blown restaurant meal, it is very important. I think good, wholesome food at reasonable prices is what most people want, and I prefer where possible to deal with the local trades people e.g. butcher, baker, greengrocer, etc, and get good quality produce, reliably, at sensible prices. I do not believe in buying the cheapest – nor necessarily the most expensive.

Public houses are often serving the local community (not just the local trades people) and in turn are served by the local community. It's a two way treaty – We sell, they buy; they sell, we buy. We give, they receive; they give, we receive! – which hopefully makes our bit of the world go round. Look after each other, look after your neighbours, help each other: pubs were neighbourhood watch before Neighbourhood Watch was invented.

As a manager, rarely will you get an opportunity to influence the size and layout of the building. So you have to make the most of what you have got by way of buildings, space and facilities. Use all the available space to the best economic level.

Customers may judge a pub by its obvious facility. Normally this will be the toilets as few will have access to 'back of house' areas like kitchen or cellar. That the Gents urinals are Victorian or the Ladies wash basins are brand new will not influence many, but if they are untidy and unclean and not well stocked, this will influence some in a negative way. There are people (rumoured to be from CAMRA) who, upon entering a pub to check the quality of a fine range of real ales, dive into the toilets (to suit their sex) and refuse to taste the fine ales if the toilets are not to their liking! While working in Devon (and I am not having a go at Devon) many of the pubs I used, had outside toilets. Not the cosiest during the winter months but most were well kept, clean and tidy and fit for purpose.

Cliché or not, 'Teamwork' is important. Try and engender a good working relationship with staff and encourage them to work well with each other and with the customers. Allow, indeed encourage, some friendly banter while keeping and maintaining discipline and good behaviour.

So what do you need to be a good publican? Infinite patience, with staff, with customers, with suppliers, with deliverers, with head office, with time wasting pre-recorded telephone calls – No! Not them! (how do they know the most inconvenient time to phone in?) Understanding, patience, tolerance, patience, good interpersonal skills, patience, good managerial skills, patience, ability to juggle, ability to balance, patience, ability to fix it – whatever it is. Be a cleaner, locksmith, plumber, parking attendant, dog minder, electrician (but I don't do steps or ladders), child enforcer (patience again), accountant, drain rodder and toilet fixer. Above all, you do need a good sense of humour. I've been trying to do all this for years, but I intend to keep learning for a few more years yet.

Linda Thompson-Jones

Composed on the forecourt of the Dolphin in Betchworth, Surrey, while enjoying a couple of halves of Young's Anniversary Ale! ... and it's still only 11.46am by the church clock!

As promised, here are the solutions to the puzzles set in December's Idle Moments column.

NUMBER PUZZLES:

- 36 Pence for a Second Class Stamp
- 1500 Paces in a Roman Mile
- 3 Volumes to the Lord of the Rings
- 25 Cents in a Quarter
- 9 Zeroes in a Billion
- 26 Prime Numbers Under One Hundred
- 744 Hours in January
- 22 Balls on a Snooker Table
- 7 Swans A-Swimming
- 3 Tudor Kings of England

5BY4 (Three by):

- Three Nights a Week – Fats Domino
- Three Steps to Heaven – Eddie Cochran
- Three Times a Lady – Commodores
- 3 is Family – Dana Dawson
- Three Bells – Brian Poole & the Tremeloes
- Three Little Birds – Bob Marley & the Wailers
- 3 x 3 – Genesis
- Three Coins in the Fountain – Frank Sinatra
- Three Little Words – Applejacks
- Three Little Pigs – Green Jelly

GENERAL KNOWLEDGE:

- It is Christmas Island that can be found at 10°30' South, 105°40' East.
- The common name of the type of Hellebore that produces large white flowers from midwinter to early spring is the Christmas Rose.
- It was the Royal Institution Christmas Lectures for Children that Michael Faraday started in 1826.
- The Festival of Nine Lessons and Carols is held every Christmas Eve in Kings College Chapel, Cambridge.
- The celebration of Christmas was banned (for a period of 12 years) by act of parliament under Oliver Cromwell.
- William I was crowned king of England on Christmas Day 1066.
- In the Muppet Christmas Carol (1992) Ebenezer Scrooge was played by Michael Caine.
- The Stone of Scone was "stolen" from Westminster Abbey on Christmas Day 1950.
- The King's Christmas radio message to the Empire was first broadcast in 1932. And the Queen's Christmas message to the Commonwealth first televised in 1957.
- And finally – White Christmas was written by Irving Berlin. Bing Crosby sang it in Holiday Inn (1942).

"Keep your face to the sunshine and you cannot see the shadow." [Helen Keller]

Hello, and may I be (probably) the last to wish you a Happy New Year. Let's have some number puzzles; do any of these mean anything to you?

- 3 P at B
- 80 QV in F
- 6 TTH of BD
- 1951 Y of the F of B
- 30 P of S
- 1 for HN
- 2 P for the YB in S
- 997 HPN under OT
- 4 ECPD in the C of L
- 3 D is O in MC

This time I thought I would call 5BY4 "Roman Towns" so then I had to sort out the Roman names of some towns and cities in England. Can you correctly identify the pairs?

- | | |
|----------------|---------------|
| 1. Durnovaria | A. Chester |
| 2. Deva | B. Doncaster |
| 3. Verulamium | C. St. Albans |
| 4. Danum | D. Cambridge |
| 5. Eboracum | E. Middlewich |
| 6. Camulodunum | F. York |
| 7. Lactodorum | G. Colchester |
| 8. Sulloniaci | H. Dorchester |
| 9. Salinae | I. Edgware |
| 10. Durolipons | J. Towcester |

And to finish up with here are some general knowledge type questions . . . or are they trivia . . . or is there any difference? Anyway, see if you can answer them.

- By what name was Natalia Nikolaeva Zakharenko professionally known?
- The male Sinai Agama, a small lizard (up to 10 inches including tail), turns a striking shade of what colour to attract females in the mating season?
- Portia Simpson Miller was sworn in as Prime minister of what British Commonwealth country on 5th January 2012? (Blimey! Almost topical!)
- The Hugo Awards (named after Hugo Gernsback) are awarded annually in what field of literature?
- Fingal's Cave, celebrated in Mendelssohn's "Hebrides Overture" is on what island?
- Still with Fingal's Cave – its name in Gaelic is Uamh-Binn; what does this mean in English?
- In what English county is Nunney Castle, built for Sir John Delamere in 1373?
- The Red Devils are a display team using what particular type of equipment?
- In Greek mythology, Hygeia was the goddess of what?
- In what Ealing Comedy film were all eight victims played by Alec Guinness, and who played the perpetrator of these dastardly acts?

And that, as they say (or so I'm told), is that (whatever "that" means). Idleness over – get back to being productive.

Andy Pirson

NELSON BREWERY



FIND OUT MORE AT WWW.NELSONBREWERY.CO.UK/THE NEIL COWLEY TRIO

SERVING YOU!

NOW DELIVERING WEEKLY IN YOUR AREA

ESTABLISHED IN 1995 AND UNDER ITS CURRENT OWNERSHIP SINCE JULY 2006, PIERS AND HIS TEAM ARE EXPANDING THEIR OPERATION AND ARE NOW ABLE TO PROVIDE WEEKLY DELIVERIES ACROSS THE WHOLE LONDON AREA.

TRADITIONALLY BREWED ALES FROM THE BIRTHPLACE OF HMS VICTORY AND USING KENTISH HOPS THE TEAM PRIDE THEMSELVES ON THEIR RANGE AND AVAILABILITY.

- ADMIRAL IPA 4.0%
- POWDER MONKEY 4.1%
- FRISSEN IN THE RIGGIN 4.7%
- MIDSHIPMAN DARK MILD 4.0%
- PUBBER'S PUBBY PORTER 4.8%
- NELSON'S BLOOD 6.0%
- PIECES OF EIGHT 3.5%
- DOGWATCH STOUT 4.5%



- EXCLUSIVE DISTRIBUTORS OF DODDIE'S TUN, AWARD WINNING KENTISH CIDER!
- STOCKIST'S OF MICROBREWERY PRODUCTS FROM ACROSS THE COUNTRY!



NELSON BREWERY

UNIT 2, BUILDING 64
THE HISTORIC DOCKYARD
CHATHAM
ME4 4TE



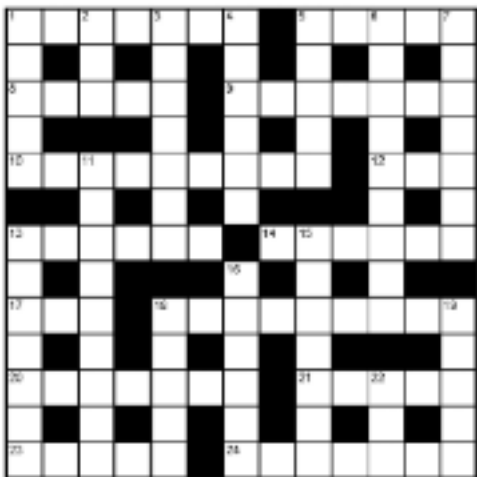
find us on



PHONE: 01634 832528
MOBILE: 07710 478725
EMAIL: SALES@NELSONBREWERYCOMPANY.CO.UK

'EXPECT THE BEST'

Compiled by DAVE QUINTON



Name _____

Address _____

All correct entries received by first post on 21st March will be entered into a draw for the prize.

Prize winner will be announced in the June London Drinker. The solution will be given in the April edition.

All entries to be submitted to:
London Drinker Crossword, 25 Valens House,
Upper Tulse Hill, London SW2 2RX

Please Note: Entries on oversize copies of the grid will not be entered into the prize draw.

DECEMBER'S SOLUTION



£20 PRIZE TO BE WON

ACROSS

1. Stewing about pains. [7]
5. Showed disappointment with vehicle. [5]
8. Person with alternative dwelling. [5]
9. Convict gets punishment – put in prison. [7]
10. She came out with opening bet. [9]
12. Silver ring found in the past. [3]
13. Some hate the red tie. [6]
14. Unacceptable when I come in? The idea! [6]
17. Novel woman. [3]
18. He'll get the chair. [9]
20. Find the answer after sailor's discharge. [7]
21. Messenger from a strange land. [5]
23. Get excited though energy dead. [5]
24. Puts to one side quiet little men. [7]

DOWN

1. No longer wild, thanks to the sea. [5]
2. I have new name for pub. [3]
3. Rubbish in the entrance is a killer. [7]
4. Support the runner-up. [6]
5. Pests consuming last of luncheon meat. [5]
6. Formal sign of elections
7. Deceased have to fade away. [3,4]
11. Hit the drink in London. [9]
13. Dined after trial – with a will! [7]
15. Musical drama has note cut. [7]
16. They pull tall structures. [6]
18. Beet, it's said, or beans. [5]
19. You need bread for a posh car. [5]
22. Boss hung over somewhat. [3]

Winner of the prize for the October Crossword:
Mrs. Sarah Brown, London W12.

Other correct entries were received from:

Sheila Allen, Ted Alleyway, C.J.Alexander, Tony Alpe, Pat Andrews, Hilary Ayling, Stephen Bailey, John Baker, John Barker, Mike Belsham, Steve Block, C.Bloom, Graham Bradford, Deryn Brand, Kelvin Brewster, Mark Broadhead, Clive Buckman, Eddie Carr, Tim Chard, Jon Christie, Carole Cook, Charles Creasey, Kevin Creighton, Paul Curson, Peter Curson, Tim Davies, Michael Davis, John Dodd, Richard & Clever Clogs Douthwaite, Steve Downey, Tom Drane, Rodney Easthill, Jonathan Edwards, C.J.Ellis, Cliff Everitt, Brian Exford, Mike Farrelly, Robert Ferrier, Nigel Fitch, Sally Fullerton, Christopher Gilbey, Peter Giles, Henry Girling, B.Gleeson, Marion Goodall, Paul Gray, J.E.Green, J.Green & H.Hopkins, Alan Greer, Richard Gregory, Alan Groves, John Guaschi, Caroline Guthrie, Stuart Guthrie & Partis Evans, Dave Hardy, Roy Harris, John Heath, F.Hegarty, Alison Henley, Graham Hill, William Hill, Chris James, Carol Jenkins, Claire Jenkins, Les Jenkins, Derek Jiggins, John the Jester, D.M.L.Jones, Gerald Jones, Brian Jowers, Mike Joyce, Roger Knight, Shirley Knott, Mick Lancaster, Pete Large, Tony Lennon, Andy Lindburn, Mike Lloyd, G.Lopatis, Dave McCarthy, Derek McDonnell, Sheila McGrath, Pat Maginn, Ian Makay, Steve Maloney, Allan Marshall, Tony Martin, Terry Mellor, Jan Mondrzejewski, M.J.Moran, Bill Morrell, Stuart Moul, Al Mountain, Dave Murphy, Mark Nichols, Paul Nicholls, Andrzej Niemiro, Mike Norman, Gerald Notley, Anne & Mike O'Sullivan, M.Ognjenovic, Michael Oliver, Stuart Osgood, Nigel Parsons, G.Patterson, Christine Pearce, Michael Pigden, Mark Pilkington, Barrie Powell, Jeanette Powell, Nicholas Priest, Derek Pryce, P.D.Reynolds, Tony Roberts, Nigel Roe, Paul Rogers, Richard Rogers, Pete Simmonds, Lesley Smith, R.F.Smith, Ian Sneesby, Ivan Stevenage, D.A.Swinger, Ian Symes, Ken Taylor, Bill Thackray, Colin Thew, Keith Todd, Vic the Beard, David Waddison, Andy Wakefield, Martin Weedon, Miss E.A.Whole, Nigel Wheatley, John Williamson, M.J.Wilson, Sue Wilson, David Woodgate, David Woodward, Peter Wright & the Missus.

There were also two incorrect and three incomplete entries.

CASK



'Pub of the Year'

Publican Awards 2011

'Pub of the Year 2011'

CAMRA West London

'London cask ale Pub of the Year'

Great British Pub Awards 2011

10 REAL ALES CHANGING DAILY

EXCLUSIVE IMPORTED CRAFT KEG BEERS

500+ BOTTLED BEERS

LUNCH & DINNER SERVED DAILY

NEXT "MEET THE BREWER"
MONDAY 6TH FEBRUARY ARBOR ALES
MONDAY 5TH MARCH HARDKNOTT
MONDAY 2ND APRIL FYNE ALES



WWW.CASKPUBANDKITCHEN.COM

Tel: 020 7630 7225

HOGS BACK

**FREE
HOME DELIVERY**

See hogsback.co.uk
for details and conditions
or visit our
brewery shop.



**WHY NOT
BOOK A
BREWERY
TOUR?**

CALL
01252 784495
for details.

Nothing Else Springs to Mind

Hogs Back Brewery Ltd, Tongham, Surrey,
GU10 1DE. Tel: 01252 783000 www.hogsback.co.uk